

Madison, Wisconsin

RELOCATION ORDER APPROVED  
BY THE COMMON COUNCIL

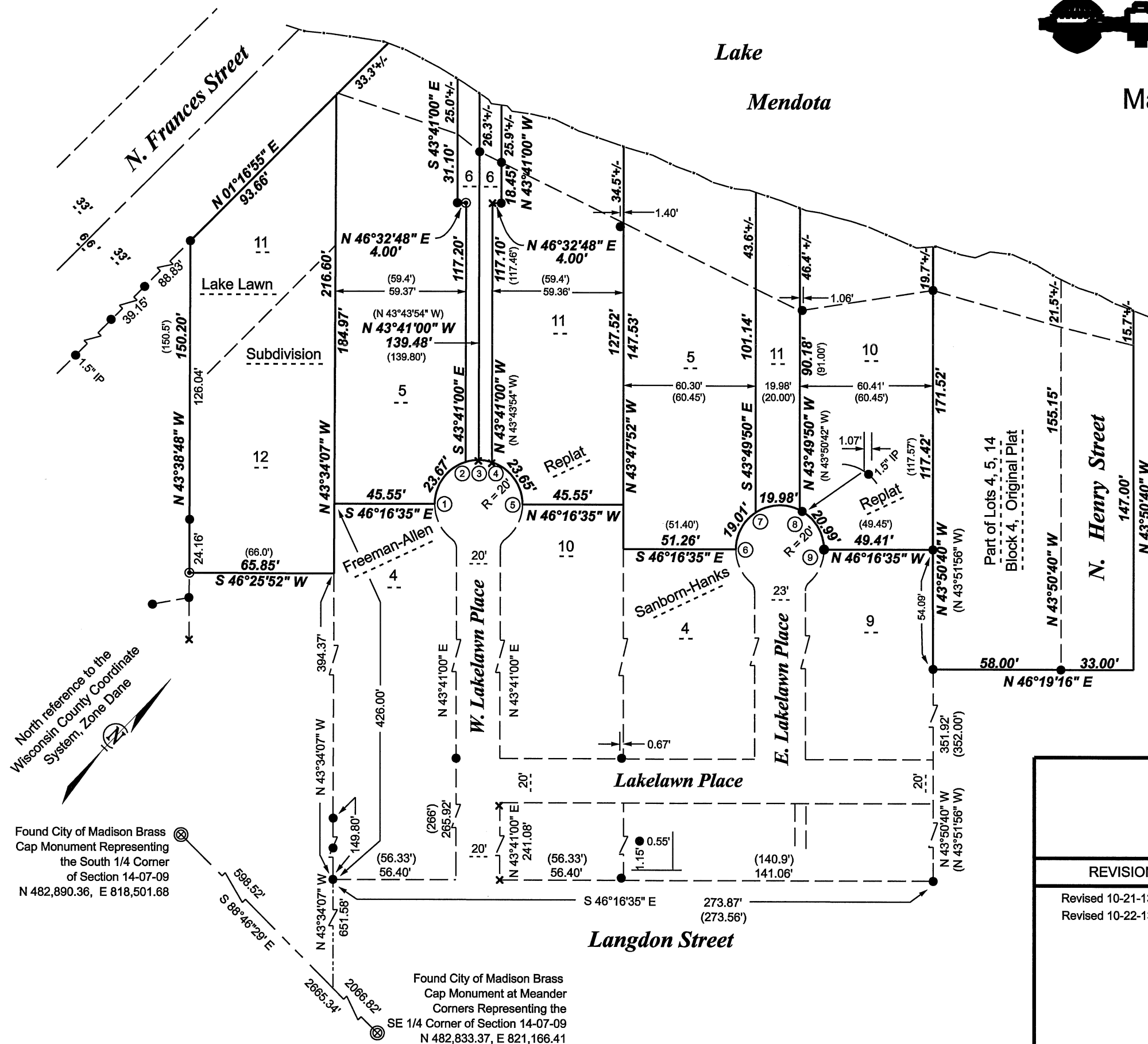
CITY CLERK \_\_\_\_\_ DATE \_\_\_\_\_

RELOCATION ORDER APPROVED  
BY THE BOARD OF PUBLIC WORKS:

EXECUTIVE SECRETARY \_\_\_\_\_ DATE \_\_\_\_\_

RELOCATION ORDER APPROVED  
BY THE PLAN COMMISSION:

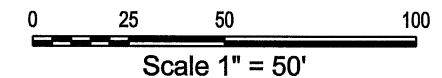
EXECUTIVE SECRETARY \_\_\_\_\_ DATE \_\_\_\_\_



Pt - Pt	Radius	Bearing	Chord	Central Angle
01-02	20.00'	S 27°25'54\" E	23.67'	72°34'58\"
02-03	20.00'	S 37°35'18\" W	6.07'	17°27'28\"
03-04	20.00'	S 55°02'45\" W	6.07'	17°27'28\"
04-05	20.00'	N 79°58'28\" W	23.65'	72°30'06\"
06-07	20.00'	S 15°20'26\" E	19.01'	56°45'58\"
07-08	20.00'	S 43°00'36\" W	19.98'	59°56'06\"
08-09	20.00'	N 75°22'22\" W	20.99'	63°17'56\"

LEGEND

- Found Rebar
- ✕ Found Cut Cross
- ⊙ Found 1" IP



North reference to the  
Wisconsin County Coordinate  
System, Zone Dane

Found City of Madison Brass  
Cap Monument Representing  
the South 1/4 Corner  
of Section 14-07-09  
N 482,890.36, E 818,501.68

Found City of Madison Brass  
Cap Monument at Meander  
Corners Representing the  
SE 1/4 Corner of Section 14-07-09  
N 482,833.37, E 821,166.41

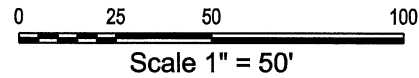
## CITY OF MADISON RELOCATION ORDER

REVISIONS

Revised 10-21-13 TT  
Revised 10-22-13 TT

PLAT OF LAND INTERESTS REQUIRED FOR THE CONSTRUCTION AND  
MAINTENANCE OF IMPROVEMENTS FOR SANITARY SEWER ALONG  
LAKE MENDOTA FROM N. HENRY STREET TO N. FRANCES STREET  
LOCATED IN THE SE 1/4 OF THE SW 1/4 (PART OF GOVT. LOT 3)  
AND THE SW 1/4 OF THE SE 1/4 (PART OF GOVT. LOT 2) OF SECTION 14,  
TOWN 07 NORTH, RANGE 09 EAST, CITY OF MADISON,  
DANE COUNTY, WISCONSIN.

CITY ENGINEERING DIVISION  
PROJECT NO. 53W1588  
REAL ESTATE PROJECT NOS. 10112



MADISON, WISCONSIN

RELOCATION ORDER APPROVED  
BY THE COMMON COUNCIL

CITY CLERK \_\_\_\_\_ DATE \_\_\_\_\_

RELOCATION ORDER APPROVED  
BY THE BOARD OF PUBLIC WORKS:

EXECUTIVE SECRETARY \_\_\_\_\_ DATE \_\_\_\_\_

RELOCATION ORDER APPROVED  
BY THE PLAN COMMISSION:

EXECUTIVE SECRETARY \_\_\_\_\_ DATE \_\_\_\_\_

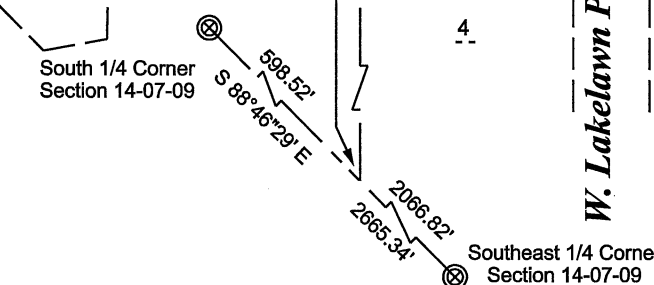
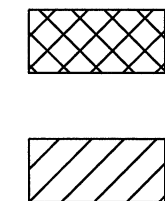
N. Frances Street

Lake Mendota

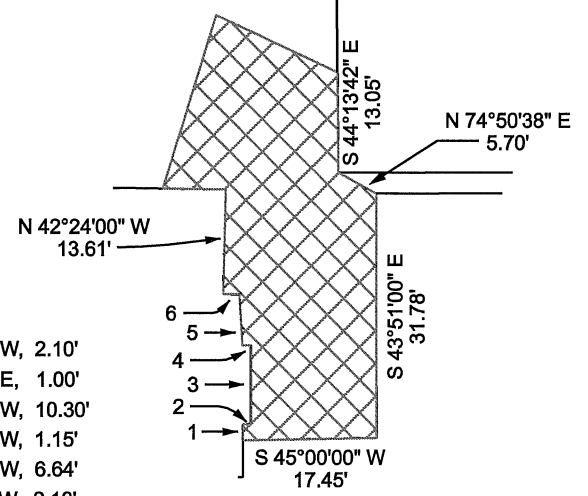
N. Henry Street

W. Lakelawn Place

E. Lakelawn Place



- 1 N 42°24'00" W, 2.10'
- 2 N 47°36'00" E, 1.00'
- 3 N 43°40'00" W, 10.30'
- 4 S 46°20'00" W, 1.15'
- 5 N 47°20'40" W, 6.64'
- 6 S 47°36'00" W, 2.10'



SCHEDULE OF INTERESTS REQUIRED

PARCEL #	ADDRESS	OWNER NAME	PARCEL NUMBER	FEE AREA REQUIRED	PERMANENT EASEMENT AREA	TEMPORARY EASEMENT AREA
①	633 N. Frances Street	The French House, Inc.	251-0709-144-1901-9		733 square feet	328 square feet
②	244 W. Lakelawn Place	Madison Community Co-Operative	251-0709-144-1922-5		1,573 square feet	2,537 square feet
③	250 W. Lakelawn Place	240 W. Lakelawn Place, LLC	251-0709-144-1943-1		819 square feet	408 square feet
④	249 W. Lakelawn Place	222 Langdon, LLC and Tweekenberg 232, LLC	251-0709-144-1945-7		808 square feet	354 square feet
⑤	233 W. Lakelawn Place	Alpha Gamma Rho Educational Foundation of Iota Chapter, Inc.	251-0709-144-1923-3		1,595 square feet	1,482 square feet
⑥	222 E. Lakelawn Place	1998 Jerome J. and Carol M. Mullins Joint Revocable Trust	251-0709-144-1926-7		1,270 square feet	1,278 square feet
⑦	230 E. Lakelawn Place	The Estate of Lucien S. Hanks	251-0709-144-1944-9		2,341 square feet	432 square feet
⑧	225 E. Lakelawn Place	Madison Community Cooperative	251-0709-144-1927-5		1,608 square feet	1,630 square feet
⑨	640 N. Henry Street	JDM Properties, LLC	251-0709-144-1941-5		356 square feet	124 square feet

CITY OF MADISON  
RELOCATION ORDER

REVISIONS

- Revised 10-21-13 TT
- Revised 10-22-13 TT

PLAT OF LAND INTERESTS REQUIRED FOR THE CONSTRUCTION AND MAINTENANCE OF IMPROVEMENTS FOR SANITARY SEWER ALONG LAKE MENDOTA FROM N. HENRY STREET TO N. FRANCES STREET LOCATED IN THE SE 1/4 OF THE SW 1/4 (PART OF GOVT. LOT 3) AND THE SW 1/4 OF THE SE 1/4 (PART OF GOVT. LOT 2) OF SECTION 14, TOWN 07 NORTH, RANGE 09 EAST, CITY OF MADISON, DANE COUNTY, WISCONSIN.

CITY ENGINEERING DIVISION  
PROJECT NO. 53W1588  
REAL ESTATE PROJECT NOS. 10112

# Lake Mendota



Madison, Wisconsin

RELOCATION ORDER APPROVED  
BY THE COMMON COUNCIL

CITY CLERK \_\_\_\_\_ DATE \_\_\_\_\_

RELOCATION ORDER APPROVED  
BY THE BOARD OF PUBLIC WORKS:

EXECUTIVE SECRETARY \_\_\_\_\_ DATE \_\_\_\_\_

RELOCATION ORDER APPROVED  
BY THE PLAN COMMISSION:

EXECUTIVE SECRETARY \_\_\_\_\_ DATE \_\_\_\_\_

N. Frances Street

11  
1  
Lake Lawn  
Subdivision  
12

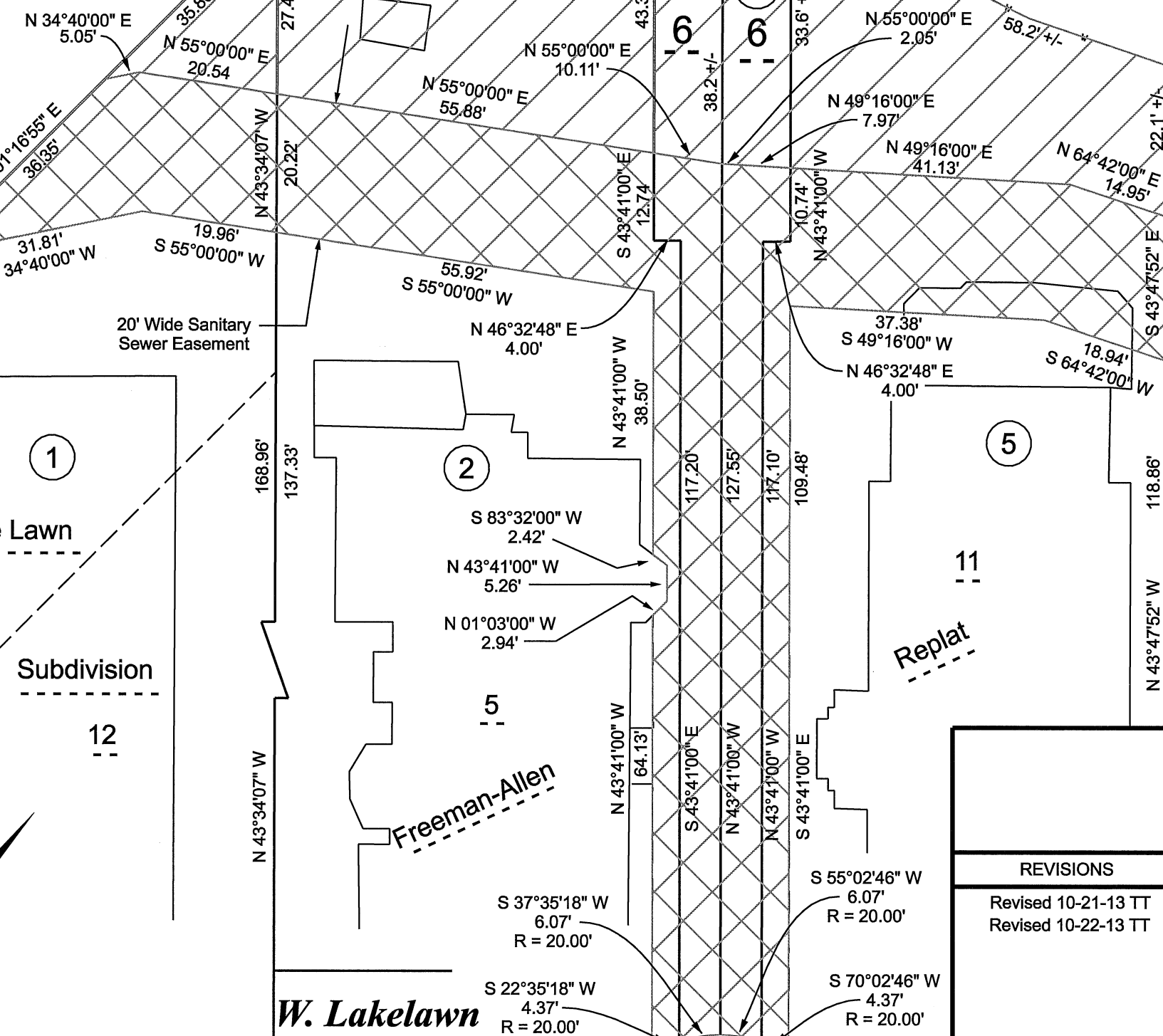
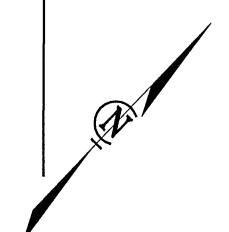
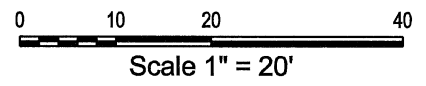
2  
Freeman-Allen

11  
Replat

6  
5  
Sanborn-Hanks

7  
11  
Replat

W. Lakelawn Place

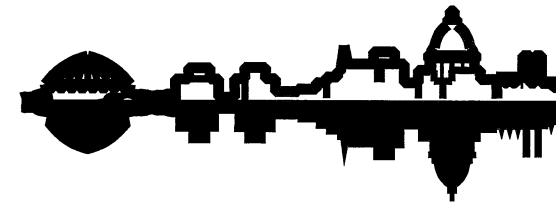


## CITY OF MADISON RELOCATION ORDER

REVISIONS
Revised 10-21-13 TT
Revised 10-22-13 TT

PLAT OF LAND INTERESTS REQUIRED FOR THE CONSTRUCTION AND MAINTENANCE OF IMPROVEMENTS FOR SANITARY SEWER ALONG LAKE MENDOTA FROM N. HENRY STREET TO N. FRANCES STREET LOCATED IN THE SE 1/4 OF THE SW 1/4 (PART OF GOVT. LOT 3) AND THE SW 1/4 OF THE SE 1/4 (PART OF GOVT. LOT 2) OF SECTION 14, TOWN 07 NORTH, RANGE 09 EAST, CITY OF MADISON, DANE COUNTY, WISCONSIN.

CITY ENGINEERING DIVISION  
PROJECT NO. 53W1588  
REAL ESTATE PROJECT NOS. 10112



Madison, Wisconsin

Lake Mendota

RELOCATION ORDER APPROVED BY THE COMMON COUNCIL

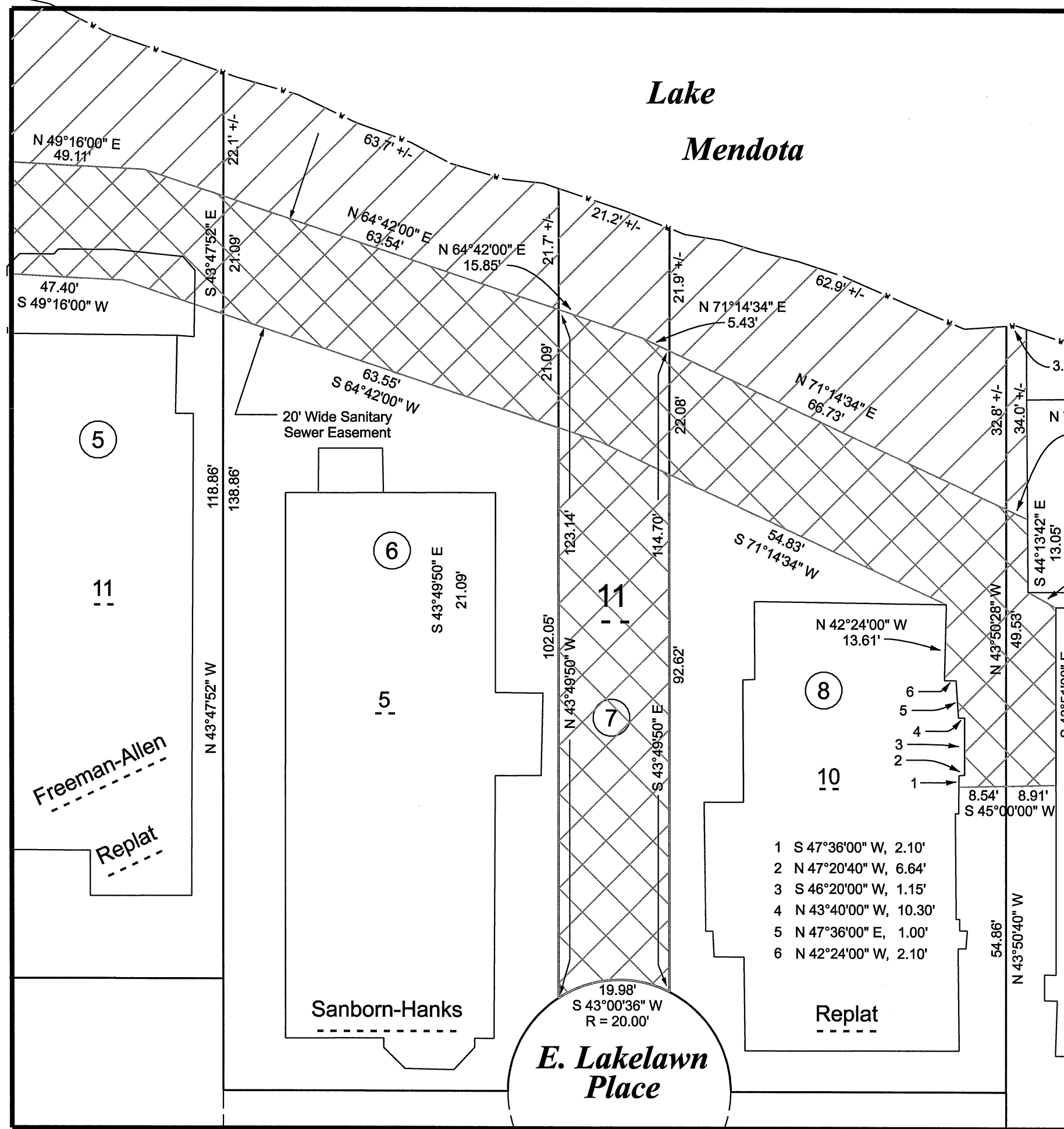
CITY CLERK \_\_\_\_\_ DATE \_\_\_\_\_

RELOCATION ORDER APPROVED BY THE BOARD OF PUBLIC WORKS:

EXECUTIVE SECRETARY \_\_\_\_\_ DATE \_\_\_\_\_

RELOCATION ORDER APPROVED BY THE PLAN COMMISSION:

EXECUTIVE SECRETARY \_\_\_\_\_ DATE \_\_\_\_\_



9

6

5

7

8

10

11

Freeman-Allen Replat

Sanborn-Hanks

E. Lakelawn Place

Replat

Part of Lots 4, 5, 14 Block 4, Original Plat

N. Henry Street

- 1 S 47°36'00" W, 2.10'
- 2 N 47°20'40" W, 6.64'
- 3 S 46°20'00" W, 1.15'
- 4 N 43°40'00" W, 10.30'
- 5 N 47°36'00" E, 1.00'
- 6 N 42°24'00" W, 2.10'

### CITY OF MADISON RELOCATION ORDER

REVISIONS
Revised 10-21-13 TT
Revised 10-22-13 TT

PLAT OF LAND INTERESTS REQUIRED FOR THE CONSTRUCTION AND MAINTENANCE OF IMPROVEMENTS FOR SANITARY SEWER ALONG LAKE MENDOTA FROM N. HENRY STREET TO N. FRANCES STREET LOCATED IN THE SE 1/4 OF THE SW 1/4 (PART OF GOVT. LOT 3) AND THE SW 1/4 OF THE SE 1/4 (PART OF GOVT. LOT 2) OF SECTION 14, TOWN 07 NORTH, RANGE 09 EAST, CITY OF MADISON, DANE COUNTY, WISCONSIN.

CITY ENGINEERING DIVISION  
PROJECT NO. 53W1588  
REAL ESTATE PROJECT NOS. 10112

