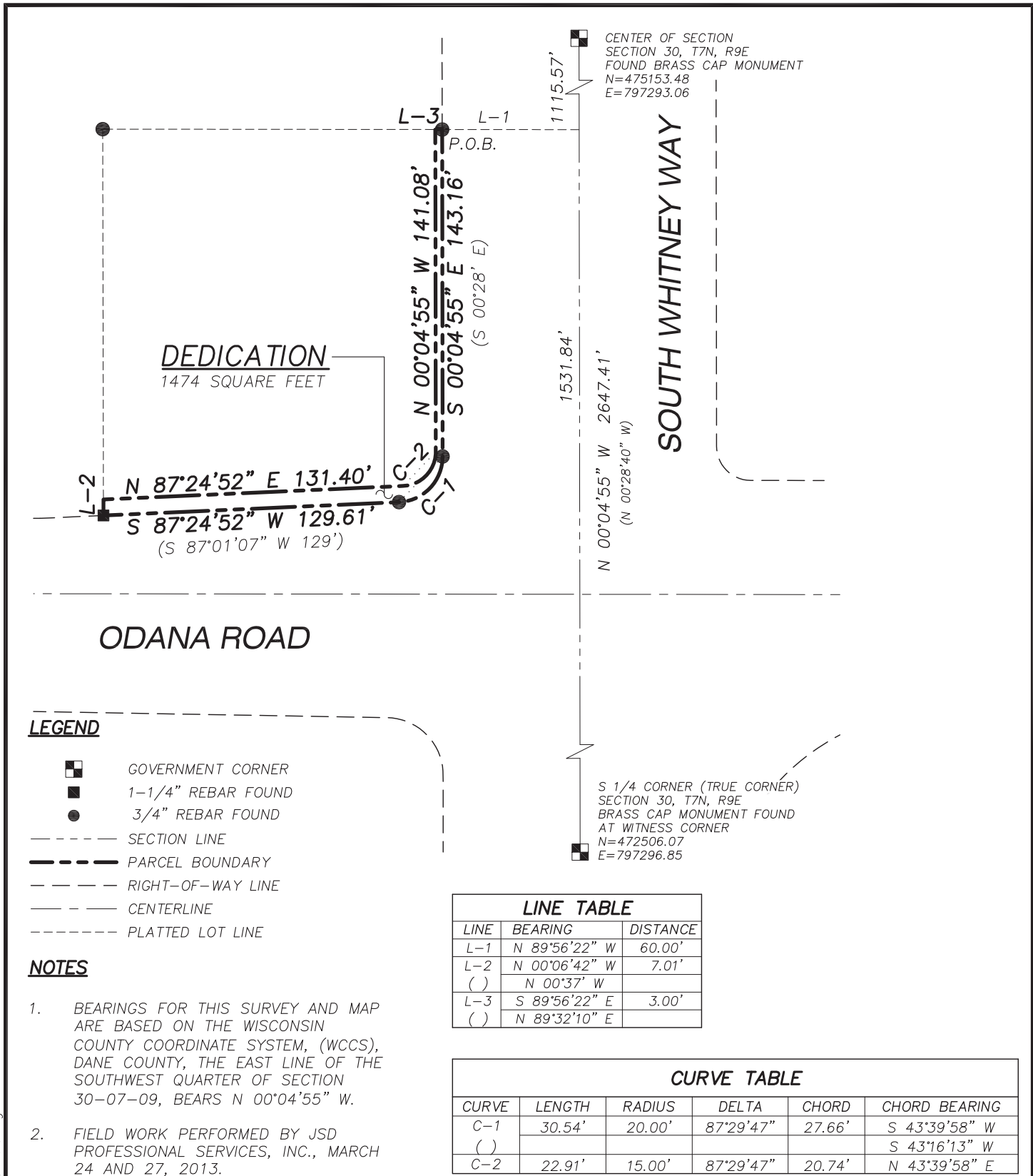


# EXHIBIT B



## EXHIBIT

PART OF THE NORTHEAST 1/4 OF THE SOUTHWEST 1/4 OF SECTION 30, TOWNSHIP 7 NORTH, RANGE 9 EAST, IN THE CITY OF MADISON, DANE COUNTY, WISCONSIN,

PREPARED BY:

**JSD** Professional Services, Inc.  
• Engineers • Surveyors • Planners

161 HORIZON DRIVE, SUITE 101  
VERONA, WISCONSIN 53593  
PHONE: (608)848-5060

PREPARED FOR:

L+A ARCHITECTS, INC.  
2430 ROCHESTER  
COURT,  
STE. 200  
TROY, MI 48083

PROJECT NO: 13-5585

FILE NO: A-270

FIELDBOOK/PG: 259/21

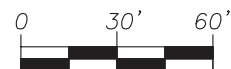
SHEET NO: 1 OF 1

SURVEYED BY: JDS

DRAWN BY: JK

CHECKED BY: HPJ

APPROVED BY: HPJ



SCALE: 1" = 60'

I:\2013\135585\dwg\135585 Exhibit.dwg