

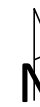
City of Madison  
Department of Public Works  
**PARKS DIVISION**

City-County Building, Suite 104  
210 Martin Luther King, Jr. Blvd.  
PO Box 2987  
Madison, WI 53701-2987

*play*  
**MADISON  
PARKS**

Graphical Scale

0 40 ft



PROJECT:

*WASHINGTON  
MANOR PATH*

*WASHINGTON MANOR  
PARK  
801 NORTH OAK STREET  
MADISON, WI*

Although every effort has been made in preparing these plans and checking them for accuracy, the contractor and subcontractors must check all details and dimensions of their trade and be responsible for the same.

ITEM DATE  
Drawn by: MRS 04-30-13

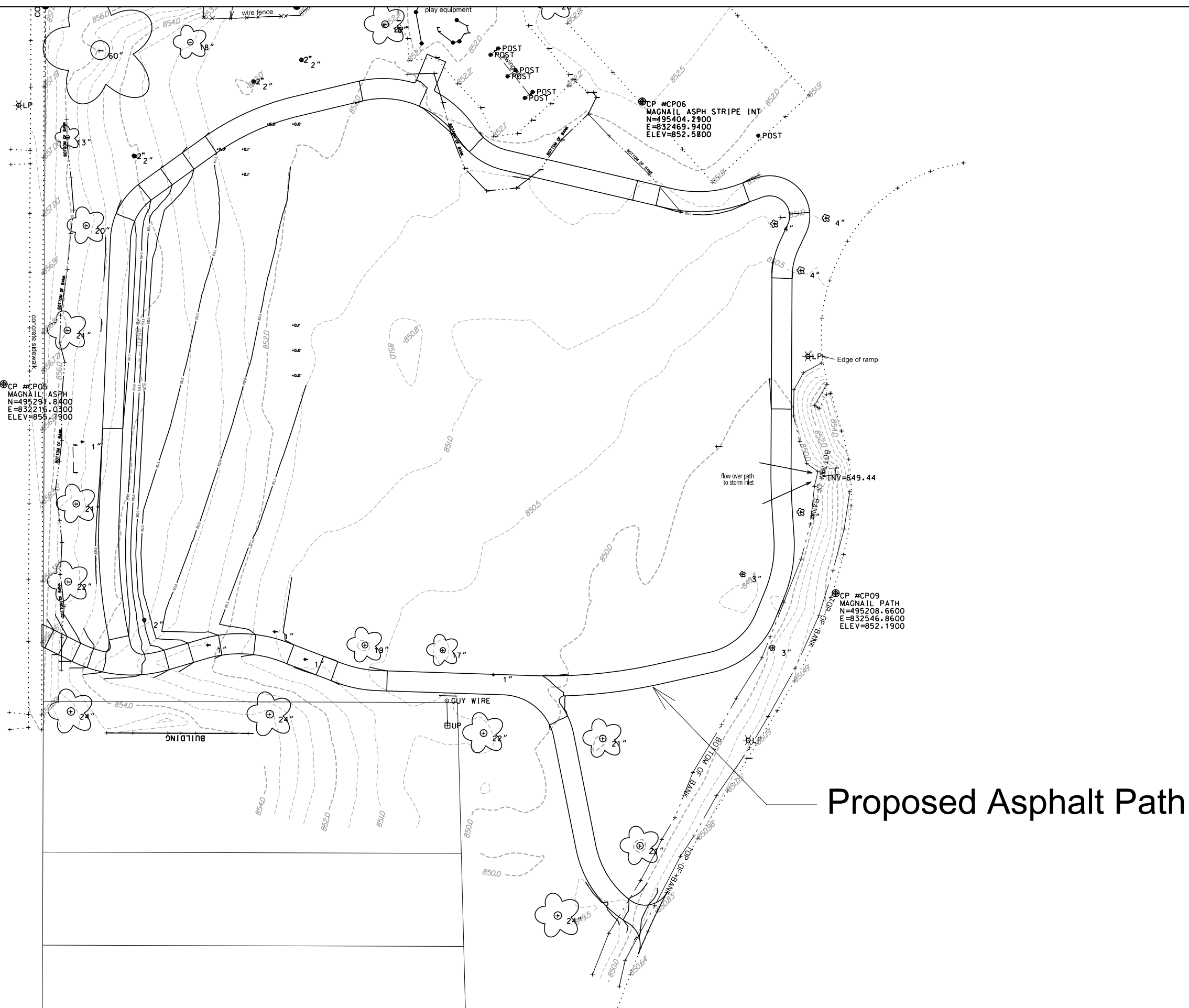
Approved by: xx-xx-xxxx

PUBLIC WORKS PROJECT #:

SHEET TITLE:

SHEET NUMBER:

**L-1**



**Proposed Asphalt Path**

CP #CP07  
HYD TOP NUT  
N=495387.6600  
E=832165.1400  
ELEV=859.9000

CP #CP05  
MAGNAIL ASPH  
N=495291.8400  
E=832216.0300  
ELEV=855.9900

CP #CP06  
MAGNAIL ASPH STRIPE INT  
N=495404.2900  
E=832469.9400  
ELEV=852.5800

CP #CP09  
MAGNAIL PATH  
N=495208.6600  
E=832546.8600  
ELEV=852.1900

CP #CP08  
HYD TOP NUT  
N=495099.7500  
E=832166.2200  
ELEV=858.1900