

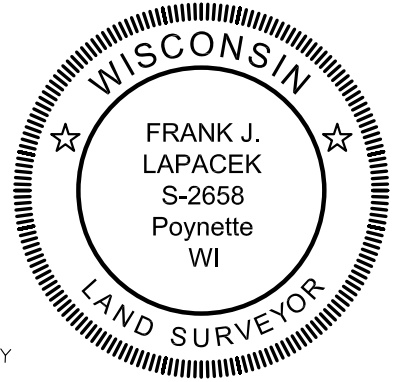
# CERTIFIED SURVEY MAP No.

ALL OF LOTS 8 AND 9 AND PART OF LOT 7, BLOCK 95, ORIGINAL PLAT OF MADISON, AS RECORDED IN VOLUME A OF PLATS, ON PAGE 3, DANE COUNTY REGISTRY, LOCATED IN THE NORTHEAST QUARTER OF THE SOUTHEAST QUARTER OF SECTION 14, TOWNSHIP 07 NORTH, RANGE 09 EAST, CITY OF MADISON, DANE COUNTY, WISCONSIN.

0 60 120 180

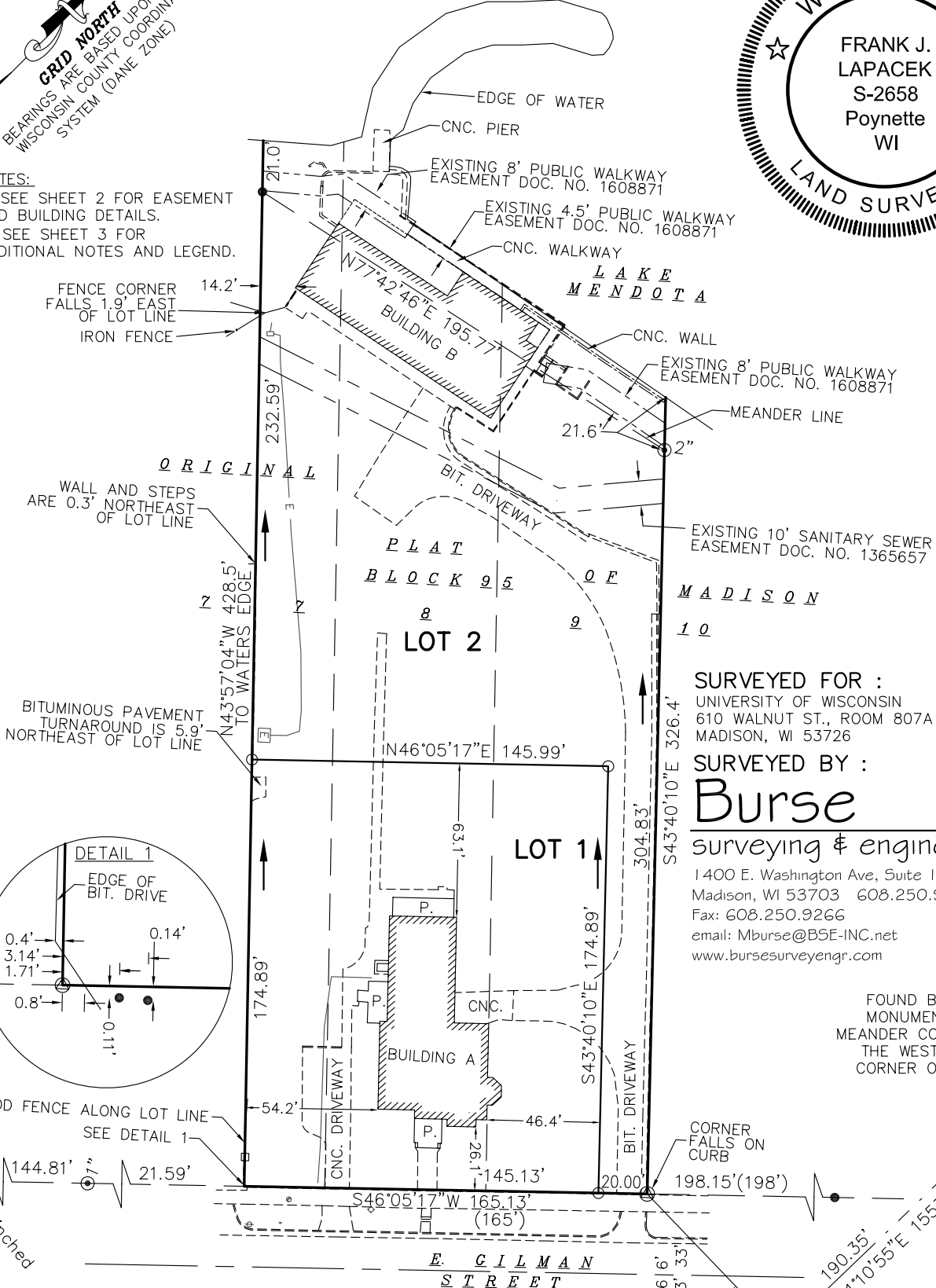


SCALE : ONE INCH = SIXTY FEET



**NOTES:**

- 1) SEE SHEET 2 FOR EASEMENT AND BUILDING DETAILS.
- 2) SEE SHEET 3 FOR ADDITIONAL NOTES AND LEGEND.



**SURVEYED FOR :**  
 UNIVERSITY OF WISCONSIN  
 610 WALNUT ST., ROOM 807A  
 MADISON, WI 53726

**SURVEYED BY :**  
**Burse**  
 surveying & engineering inc.  
 1400 E. Washington Ave, Suite 158  
 Madison, WI 53703 608.250.9263  
 Fax: 608.250.9266  
 email: Mburse@BSE-INC.net  
 www.bursesurveyengr.com

FOUND BRASS CAP MONUMENT AT THE MEANDER CORNER FOR THE WEST QUARTER CORNER OF SECTION 13-07-09

FOUND BRASS CAP MONUMENT AT THE MEANDER CORNER FOR THE SOUTHWEST CORNER OF SECTION 13-07-09

MAP NO. \_\_\_\_\_  
 DOCUMENT NO. \_\_\_\_\_  
 VOLUME \_\_\_\_\_ PAGES \_\_\_\_\_

Date: 04-17-2013  
 Plot View: csm  
 \PROJECTS\BSE1625\dwg\BSE1625.DWG