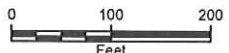




CITY: MKE DIV: GROUP: IM DB: GM: LD: CK: MADISON: KIPP
 I:\Madison_Kipp\Madison_Kipp\2013\10\20\Unconsolidated_PCE\Map.mxd 2/21/2013, 4:17:15 PM

LEGEND

- MONITORING WELL
- ▲ INJECTION WELL
- PCE CONCENTRATION (dashed where inferred)



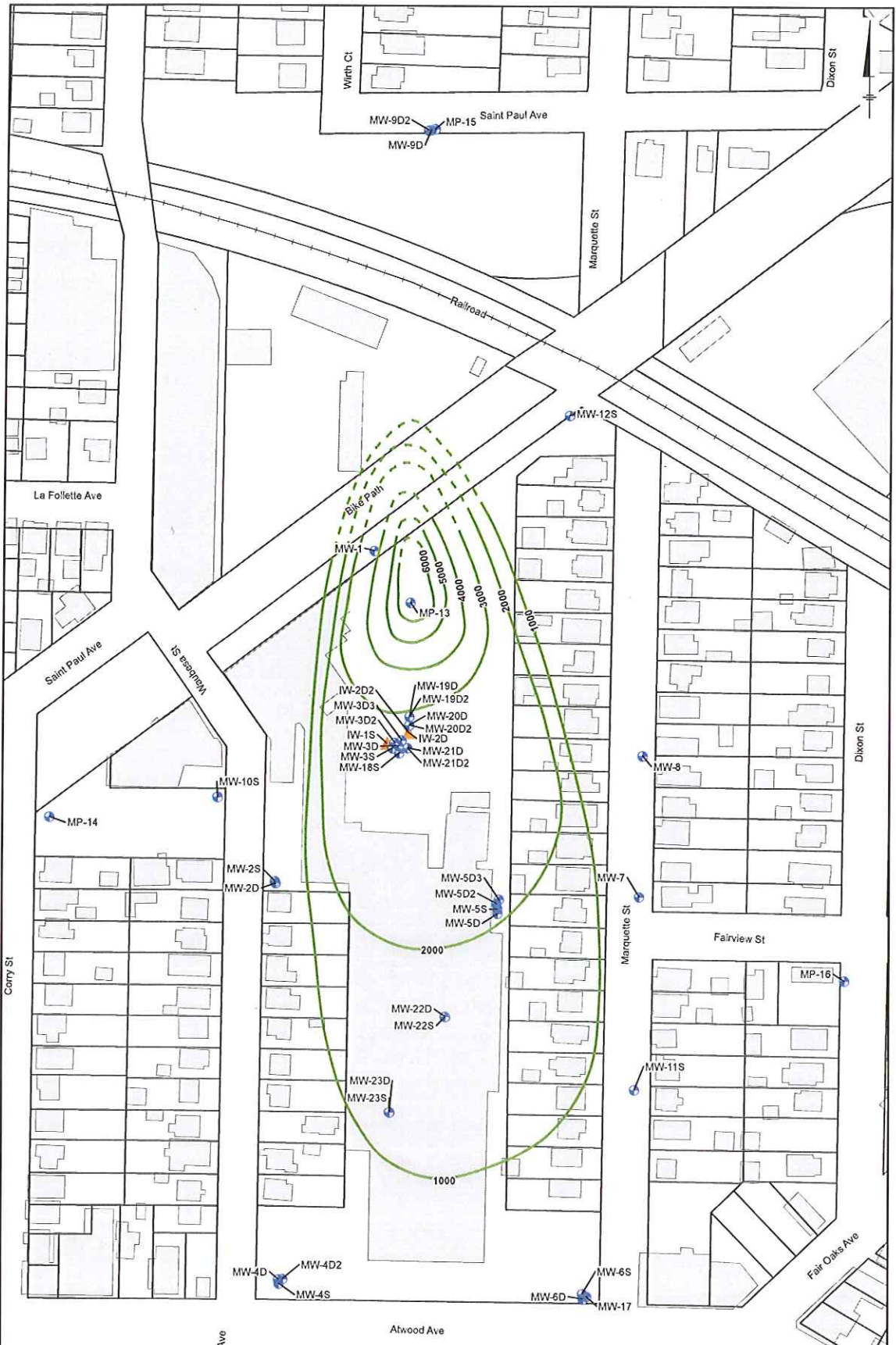
NOTES:

- 1) PCE - Tetrachloroethene
- 2) Tetrachloroethene concentrations are posted from November/December 2012 (baseline groundwater sampling event) for MW-3S and MW-18S, and from January 2013 (post pilot test ISCO injection event) for MW-1, MW-2S, MW-6S, MW-7, MW-8, MW-10S, MW-11S, and MW-12S.

MADISON-KIPP CORPORATION
 201 WAUBESA STREET
 MADISON, WISCONSIN
 SITE INVESTIGATION AND REMEDIATION
 ACTIVITIES REPORT FEBRUARY 2012 – JANUARY 2013

UNCONSOLIDATED AQUIFER PCE ISOCONCENTRATION MAP, JANUARY 2013

FIGURE 5-26

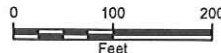


CITY: MAKE DIV/GRUP: IM DB GM LD CK MADISON-KIPP
 I:\Madison_Kipp\Madison_Kipp\3D\13\Fig27_LowerLoneRock_PCEIsoMap.mxd

- LEGEND**
- MONITORING WELL
 - INJECTION WELL
 - PCE CONCENTRATION
 (dashed where inferred)

NOTES:

- 1) PCE - Tetrachloroethene
- 2) Tetrachloroethene concentrations are posted from November/December 2012 (baseline groundwater sampling event) for MW-3D2 and MW-19D, and from January 2013 (post pilot test ISCO injection event) for MW-4D2, MW-5D, MW-6D, MW-9D2, MP-13, MP-14 and MP-16.

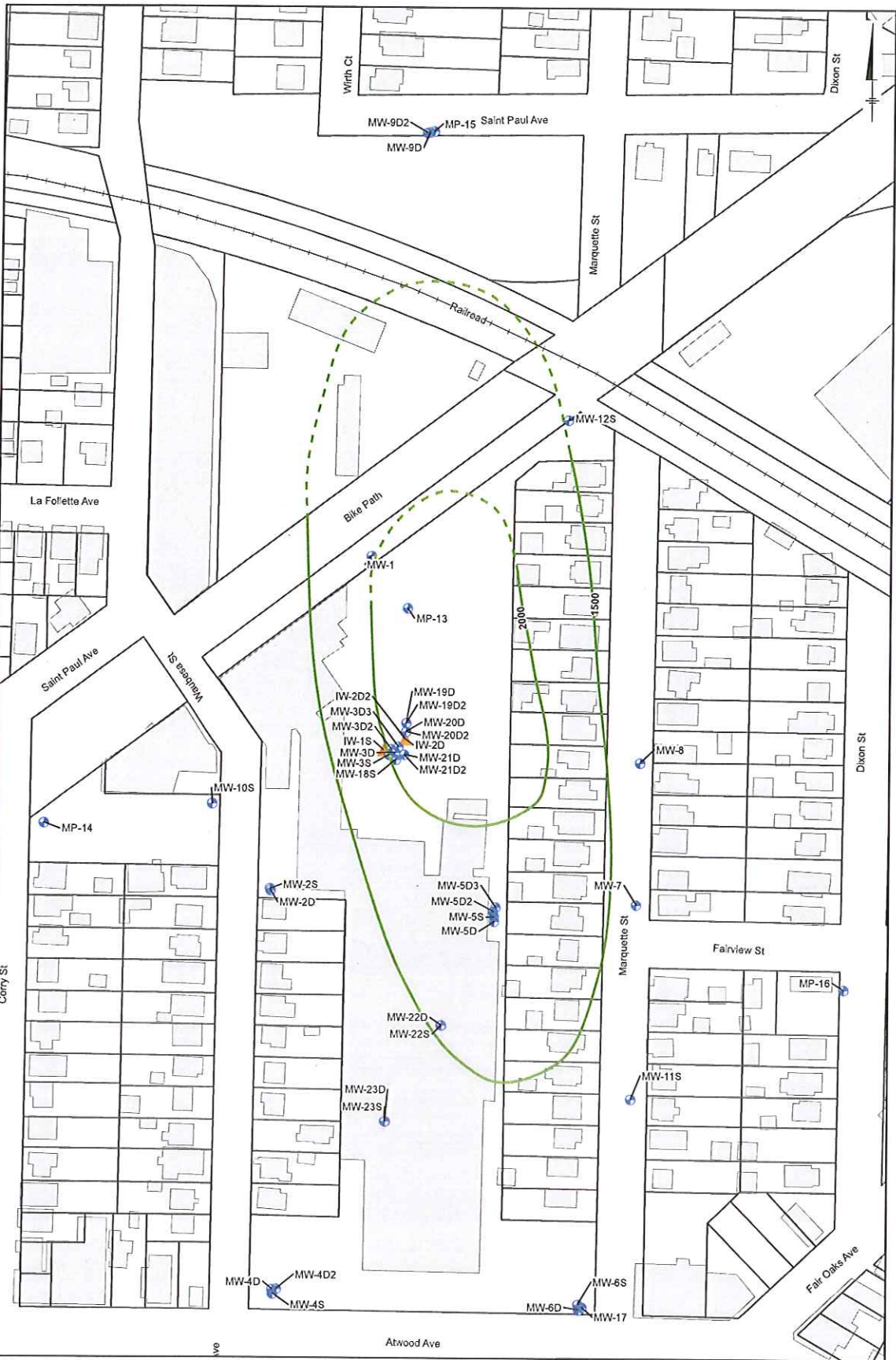


MADISON-KIPP CORPORATION
 201 WAUBESA STREET
 MADISON, WISCONSIN
 SITE INVESTIGATION AND REMEDIATION
 ACTIVITIES REPORT FEBRUARY 2012 - JANUARY 2013

**LOWER LONE ROCK FORMATION PCE
 ISOCONCENTRATION MAP JANUARY 2013**

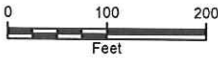
**FIGURE
5-27**

DRAFT - PRIVILEGED AND CONFIDENTIAL



CITY: MKE DIV: GROUP: MI: 00: GM: LD: CK: MADISON: KIPP
 Madison_upperwonevoc_pcep2013fig-25_upperwonevoc_pcep2013fig-25.mxd 2/11/2013, 11:25:13 AM

- LEGEND**
- MONITORING WELL
 - INJECTION WELL
 - PCE CONCENTRATION
(dashed where inferred)



NOTES:

- 1) PCE - Tetrachloroethene
- 2) Tetrachloroethene concentrations are posted from November/December 2012 (baseline groundwater sampling event) for MW-19D2, MW-20D2, and MW-21D2, and from January 2013 (post pilot test ISCO injection event) for MW-5D2, MW-17, MP-13, MP-14, MP-15, and MP-16.

MADISON-KIPP CORPORATION
 201 WAUBESA STREET
 MADISON, WISCONSIN
 SITE INVESTIGATION AND REMEDIATION
 ACTIVITIES REPORT FEBRUARY 2012 – JANUARY 2013

UPPER WONEWOC FORMATION PCE ISOCONCENTRATION MAP, JANUARY 2013



FIGURE 5-28