

From: Moder, Mark
Sent: Monday, February 18, 2013 5:07 PM
To: Parks, Timothy
Cc: Dailey, Janet
Subject: Pacific Cycle Sanitary Service

Tim,

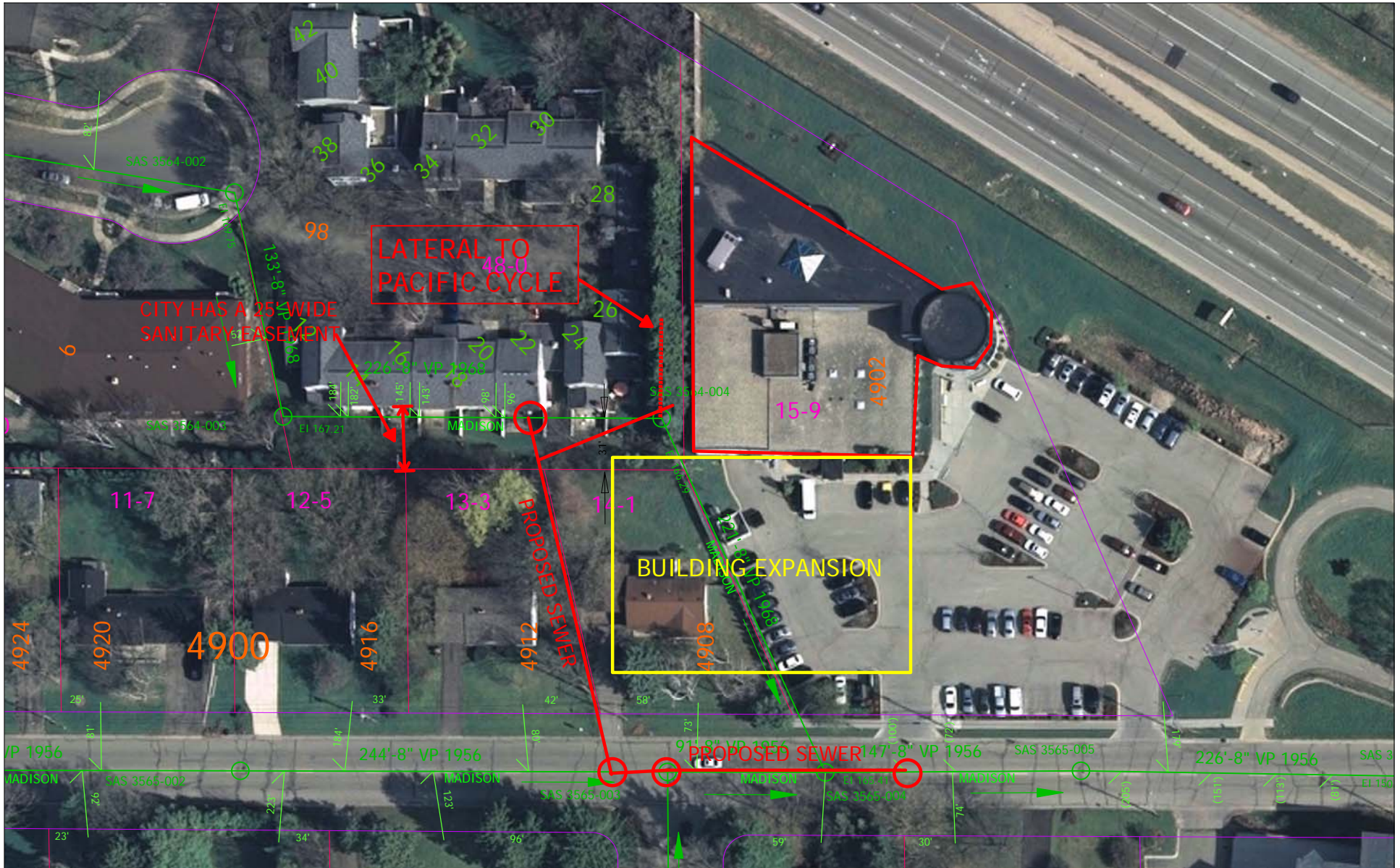
I wanted to let you know that City has a 25' wide sanitary sewer easement immediately south of the condos on the Whitcomb Village Property. We have a lot of flexibility because of this. The existing lateral for Pacific Cycle connects to the manhole immediately west of their existing building so they will need to connect into the relocated sanitary sewer (see attached). Sewer should not be a reason to delay the project. Please call with any questions – 261-9250.

-Mark

From: Moder, Mark
Sent: Thursday, January 10, 2013 2:55 PM
To: 'Bill Dunlop'
Cc: Dan Schneider; Hans P. Justeson; bob.feller@iconiccreates.com; Schlimgen, Jay
Subject: RE: Pacific Cycle Sanitary Service

According to our field crews, there is a live lateral for 4902 Hammersley directly connected to City manhole SAS 3564-004.

Mark Moder, P.E.
Engineer IV
City of Madison Engineering Division
210 Martin Luther King Jr Blvd, Room 115
Madison, WI 53703-3342
Ph: (608)261-9250 Fax:(608)264-9275
mmoder@cityofmadison.com



Time: 2/18/2013 5:00:54 PM
Session: C:\GTVviewer_Sessions\capital.gts

Scale: 1 In = 80 Ft

City of Madison, WI - GIS/Mapping data

Printed By: enmdm

Disclaimer: The City makes no representation about the accuracy of these records and shall not be liable for any damages