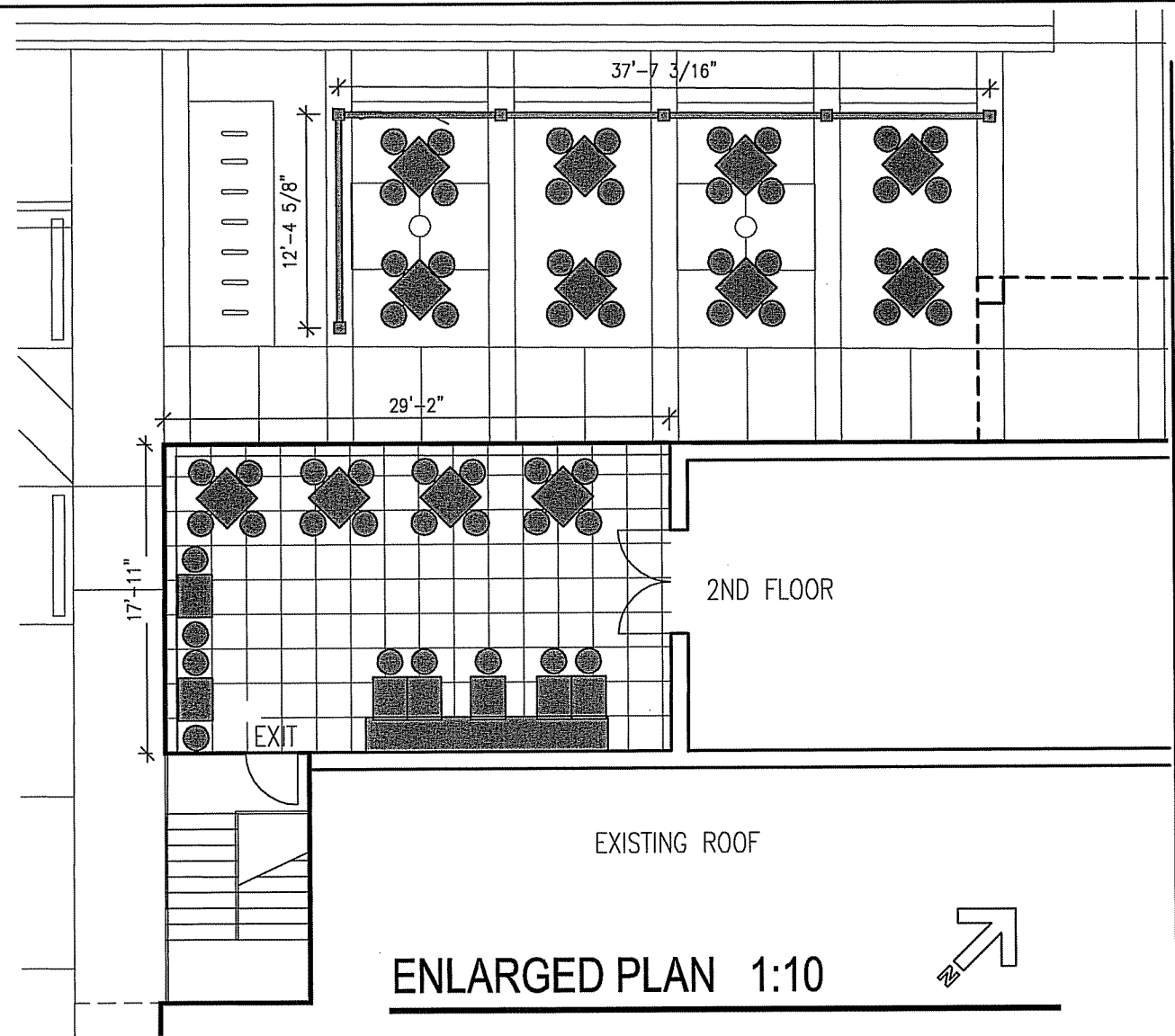
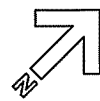


1221 WILLIAMSON
EXISTING BUILDING

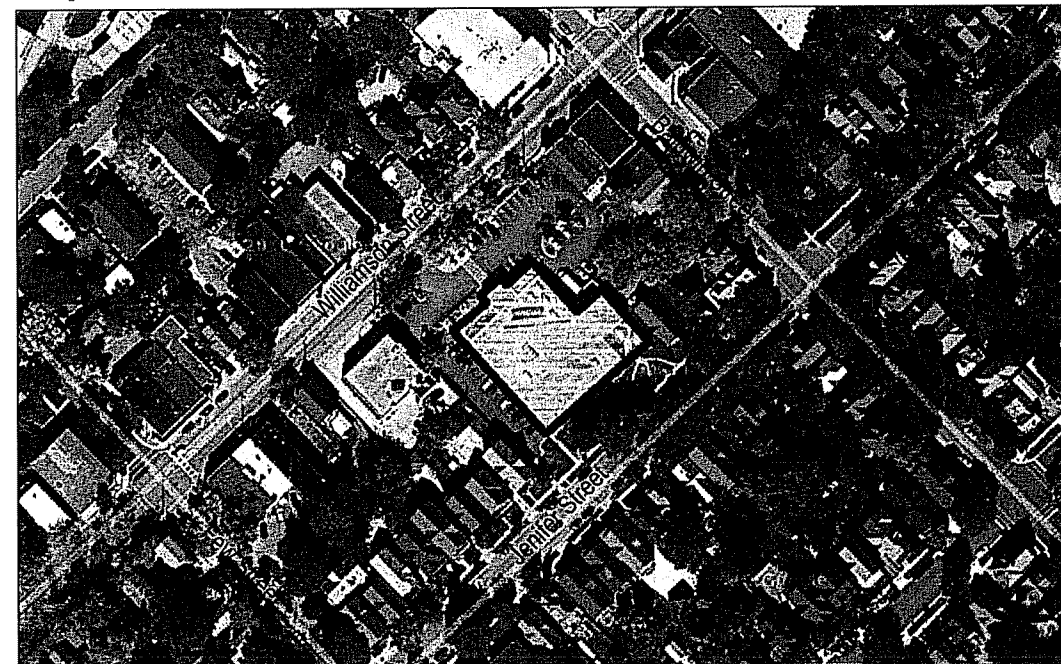
ARCHITECTURAL SITE PLAN 1:40



2ND FLOOR

EXISTING ROOF

ENLARGED PLAN 1:10



AERIAL VIEW NTS



ARD EBERLE ARCHITECTS

116 King Street
Madison, WI 53703
(608) 204-7464

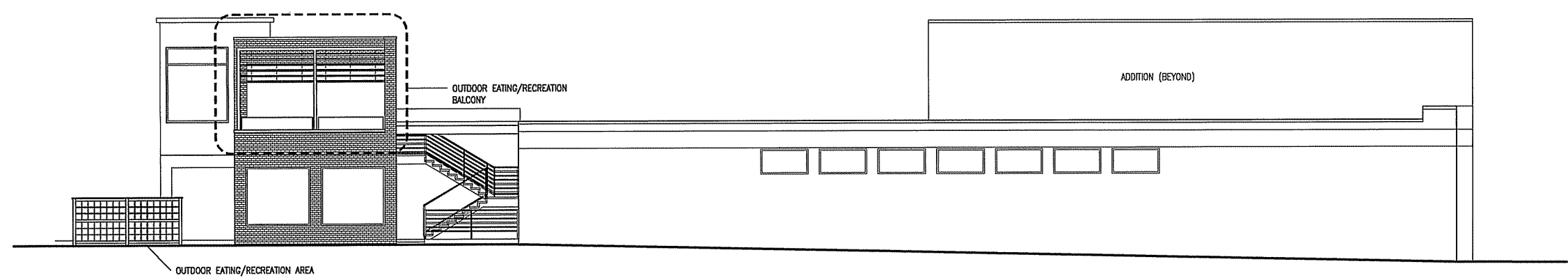
Willy
Street
Co-op

1221 Williamson St
Madison, WI

11/26/2012



Northwest elevation (Willy Street) 1/16" = 1'-0"



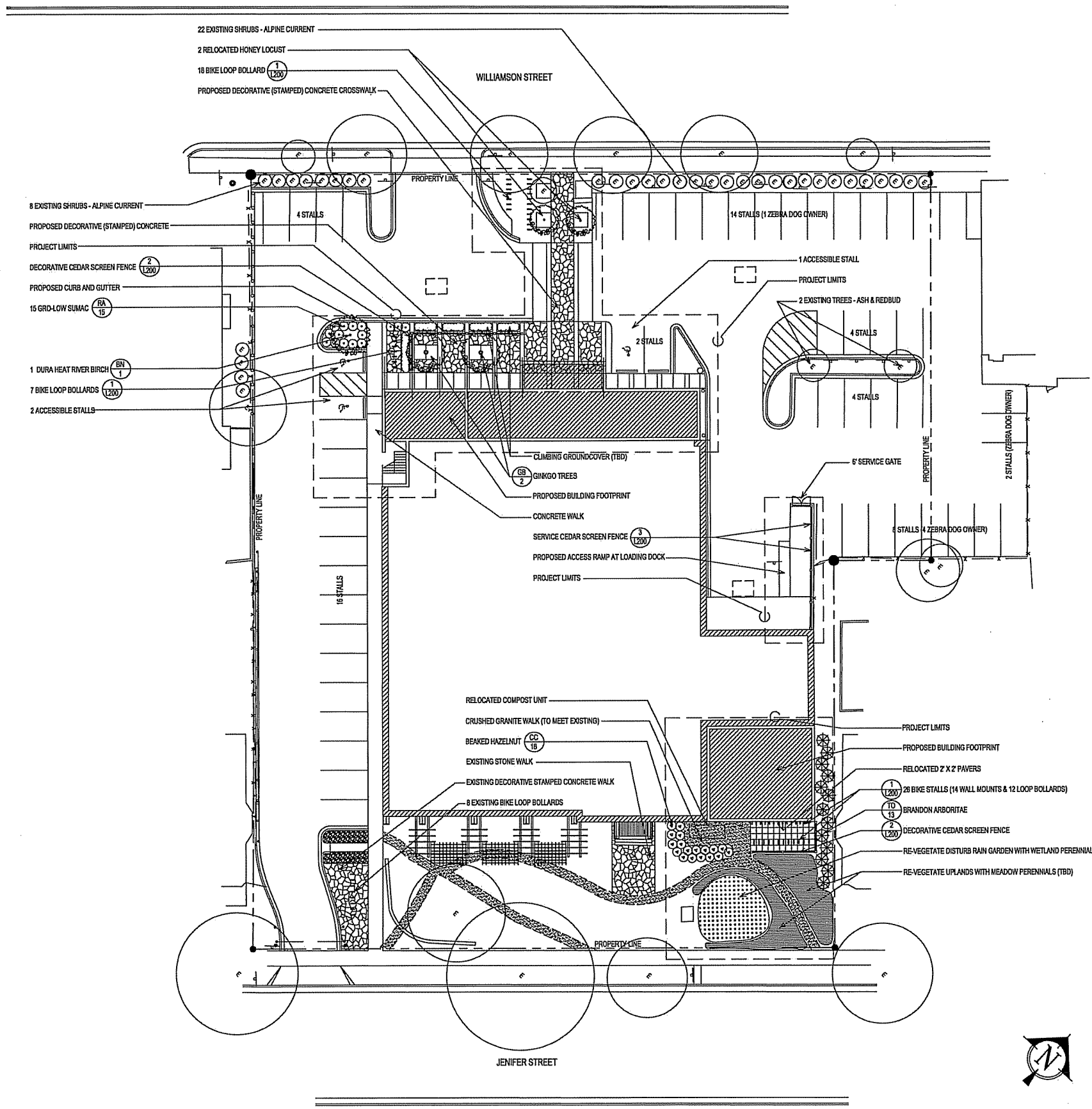
Southwest elevation 1/16" = 1'-0"

Willy
Street
Co-op

1221 Williamson St
Madison, WI

Building
Elevations

11/26/2012



LANDSCAPE WORKSHEET
 Parking Lots, Storage Areas and Loading Areas
 (Section 28.04 Madison General Ordinance)

Project Location/Address:	1221 WILLIAMSON STREET
Name of Project:	WILLY STREET CO-OP
Owner/Contact:	WILLY STREET CO-OP
Address:	1221 WILLIAMSON STREET

FOR PARKING LOTS WITH GREATER THAN 20 STALLS, LANDSCAPE PLANS MUST BE STAMPED BY A REGISTERED LANDSCAPE ARCHITECT

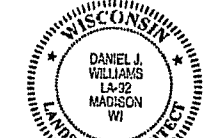
- I. Number of Trees Required**
 The number of trees required for a parking lot is based on the number of parking stalls. Using the Schedule for Required Trees on the reverse side of this worksheet, determine the number of trees required. (Example: One tree is required for 10 parking stalls).
- Landscape requirements for storage areas are determined by dividing the total square footage of the storage area by 300 square feet. This converts area to stalls. (Example: 10,000 square feet is equivalent to (33) stalls or (3) trees and (160) points).
- Number of Parking Stalls 55
- Total Square Footage of the Storage Area
 Divided by Three Hundred (300) Square Feet N/A
- Number of Canopy Shade Trees Required (2" - 2 1/2" Caliper)
 (See Schedule on reverse side) TOTAL 4
- II. Number of Landscape Points Required**
 The number of points required is also based on the number of parking stalls. Using the Point Schedule for Landscape Elements on the reverse side of this worksheet, determine the number of points required. (Example: 48.5 points are required for 10 stalls). A point fraction of (.5) or less may be disregarded, while a fraction in excess of (.5) must be counted as one point. Thus: 48.5 points would be rounded down to 48.0 points required.
- The number of points required for loading areas is (75) points for each loading berth. (See Schedule on reverse side) 75
- Number of Points Required (See Schedule on reverse side) TOTAL 346

Tabulation of Points and Credits
 Indicate below the quantity and points for all pertinent landscape elements. Also, credit information for boundary screening and any existing elements to be retained.

ELEMENT	POINT VALUE	QUANTITY	POINTS ACHIEVED	CREDITS	
				QUANTITY	POINTS
Canopy Tree: 2" - 2 1/2"	35	3	105	8	210
Deciduous Shrub	2	15	30	30	60
Evergreen Shrub	3				
Decorative Wall or Fence (per 10 L.F.)	5	8	40		
Earth Berm (per 10 L.F.) Avg. Height 30" Avg. Height 15"	5				
Evergreen Trees 3' height minimum	15				
Canopy Tree or Small Tree 1 1/2" - 2" Caliper (i.e., Crab, Hawthorn)	15				
		Sub Totals	175	+	270
					TOTAL = 445

Total No. of Points Provided (Equal to or greater than points required)

*Trees required in Part I above, are not to be included in the point count.



Approved by: *[Signature]* Date: 12.18.12

Canopy Trees

Key	Quantity	Scientific Name	Common Name	Size	Root	Spacing
BN	1	Betula nigra 'BNMTF'	Dura Heat River Birch	.2 1/2"	Cal.	See Plan
GB	2	Ginkgo biloba 'Autumn Gold'	Autumn Gold Ginkgo	.2 1/2"	Cal.	See Plan

Conifer

Key	Quantity	Scientific Name	Common Name	Size	Root	Spacing
TO	13	Thuja occidentalis 'Brandon'	Brandon's Arborvitae	5'	Height	See Plan

Shrubs

Key	Quantity	Scientific Name	Common Name	Size	Root	Spacing
CC	18	Corylus cornuta	Beaked Hazelnut	#3	Cont.	See Plan
RA	15	Rhus aromatica 'Gro-low'	Gro-low Sumac	12-18"	Height	See Plan

Site Plan
 Submittal

WILLY STREET CO-OP

Madison, Wisconsin
 Owner:
 Willy Street Co-op
 1221 Williamson Street
 Madison, WI 53703

PREPARED BY:
 LUNDE - WILLIAMS
 2647 Fenwall Circle
 Fitchburg, Wisconsin 53711

ISSUED FOR:
 SITE PLAN SUBMITTAL 12/21/12

DRAWING TITLE:
LANDSCAPE PLAN

SCALE: 0 10' 20' 30' 40'
 PROJECT NUMBER: 1209.00
 DRAWING NUMBER: L100