

PLEASE PRINT!

PLEASE PRINT!

APPLICATION FOR  
URBAN DESIGN COMMISSION  
REVIEW AND APPROVAL

AGENDA ITEM # \_\_\_\_\_  
Project # \_\_\_\_\_  
Legistar # \_\_\_\_\_

DATE SUBMITTED: _____	<input type="checkbox"/> Informational Presentation
UDC MEETING DATE: _____	<input type="checkbox"/> Initial Approval and/or Recommendation
	<input type="checkbox"/> Final Approval and/or Recommendation

PROJECT ADDRESS: 2502 Swanson Street

ALDERMANIC DISTRICT: 12

OWNER/DEVELOPER (Partners and/or Principals) ARCHITECT/DESIGNER/OR AGENT:

Dane County Regional Airport

CONTACT PERSON: Rodney F Knight, Airport Counsel

Address: 4000 International Lane

Madison WI 53704

Phone: 608-246-3388

Fax: 608-246-3385

E-mail address: knight@msnairport.com

TYPE OF PROJECT:

(See Section A for:)

☐ Planned Unit Development (PUD)

☐ General Development Plan (GDP)

☐ Specific Implementation Plan (SIP)

☐ Planned Community Development (PCD)

☐ General Development Plan (GDP)

☐ Specific Implementation Plan (SIP)

☐ Planned Residential Development (PRD)

☐ New Construction or Exterior Remodeling in an Urban Design District \* (A public hearing is required as well as a fee)

☒ School, Public Building or Space (Fee may be required) Requesting Initial and Final Approval

☐ New Construction or Addition to or Remodeling of a Retail, Hotel or Motel Building Exceeding 40,000 Sq. Ft.

☐ Planned Commercial Site

(See Section B for:)

☐ New Construction or Exterior Remodeling in C4 District (Fee required)

(See Section C for:)

☐ R.P.S.M. Parking Variance (Fee required)

(See Section D for:)

☐ Comprehensive Design Review\* (Fee required)

☐ Street Graphics Variance\* (Fee required)

☐ Other \_\_\_\_\_

\*Public Hearing Required (Submission Deadline 3 Weeks in Advance of Meeting Date)

Where fees are required (as noted above) they apply with the first submittal for either initial or final approval of a project.



January 11, 2013

City of Madison Urban Design Commission  
c/o Al Martin  
City of Madison Department of Planning and Development  
215 Martin Luther King, Jr. Blvd.  
Room LL 100  
Madison, WI 53703

Re: **Letter of Intent**

Application for UDC Initial and Final Approval  
Snow Removal Equipment Facility  
Dane County Regional Airport  
2519 Grimm Street (formerly 2502 Swanson Street)  
Project: LNDMAC-2012-00104

Dear Commissioners:

Dane County is seeking the Urban Design Commission's initial and final approval of a project involving the construction of a Snow Removal Equipment Facility (the "SRE Facility") on County owned property at the Dane County Regional Airport. As the name of the facility indicates, the heart of the project is an approximately 60,000 square foot building that will be used primarily for the storage and repair of the large trucks, plows, brooms and deicing equipment used at the Airport during the snow season. The building will also be utilized to store and maintain mowers and other vehicles and equipment necessary for Airport operations, as well as a maintenance crew breakroom, bathrooms, and office space for two supervisors. Reinforced concrete aprons on three sides of the building will provide areas for equipment staging.

Pursuant to the City's recent zoning code rewrite, effective as of January 2, 2013, the SRE Facility location is in the City's newly established Airport District. Under the zoning code rewrite, permitted uses in the Airport District include uses such as truck

and heavy equipment storage and other Airport-related facilities and uses. However, the Airport's need to have the SRE Facility up and running by the beginning of the snow season in the fall of 2013 dictated requesting City approvals for the project prior to the effective date of the zoning code rewrite.

Under the City of Madison's zoning ordinance effective at the time City approvals for the SRE Facility project were initially requested, the entire Airport Air Operations Area, including the site of the SRE Facility, was in the M2 General Manufacturing District and approved for an "Airport" conditional use. City staff considers the SRE Facility to be a continuation and expansion of the uses allowed under the conditional use effective at the time of application, and the County is presently seeking City approval of a Minor Alteration to Approved Conditional Use.

Provided under cover of this letter are the following materials submitted in support of this request for UDC approval:

- (a) Project Location Map;
- (b) Photo Overlay of Project Area, Sheet G-041, a photo overlay showing existing uses and conditions in the area of the proposed SRE Facility;
- (c) Grading Plan, Sheet C-101, (Note that minimal grading results in less than two feet of grade change from existing site conditions);
- (d) Site Plan/Landscape Plan, Sheet C-001 (Note that landscaping inside the Airport perimeter fence is minimal due to Federal Aviation Administration guidelines regarding wildlife attractants in the Airport Air Operations Area);
- (e) Building Elevations (Note that HVAC equipment is located on the building roof and screened as shown on the elevations);
- (f) SRE Facility Renderings, showing views of the proposed facility from the southeast and west;



- (g) Signage Drawing (Note that the sign is located at the southwest corner of the site, as indicated on Sheet C-001);
- (h) Photographs Showing Views From Proposed Building Location;
- (i) Photographs of Views Toward SRE Facility Site, taken from office buildings to west of site, as indicated;
- (j) Photographs of Project Finish Boards; and
- (k) Lighting Plan and Cut Sheets.

With the exception of an employee parking area, the proposed SRE Facility is to be situated "inside the fence" at the southwestern corner of the Dane County Regional Airport. The western exterior wall of the SRE building will be a continuation of the twelve foot tall perimeter fence that bounds the Airport Air Operations Area. The SRE Facility will be served by a 17 stall paved employee parking area located on the west side of the building outside of the Air Operations Area. Access to the SRE Facility from outside of the Airport Air Operations Area is permitted only by through a security door or vehicle gate opened by using an Airport issued security badge.

The proposed SRE Facility is entirely surrounded by County-owned Airport property. To the south of the proposed SRE Facility site is the existing Airport jet fuel tank farm, the Sand Storage Building, and an adjacent outdoor equipment storage area. On the north side of the site is the Airfield Maintenance Building, which is where Airport vehicles and equipment are presently stored, maintained, and staged. The Airfield Maintenance Building will continue to be used for its present functions.

Directly to the east of the SRE Facility is the Airport Perimeter Road, heavily used Taxiway A, and Runway 18/32, the Airport's primary commercial aviation runway. On the County-owned property to the west of the proposed facility, at least 450 feet away and buffered by a woods and large parking lots, are office buildings adjacent to International Lane in what is known as Truax Air Park West.

As a critical Airport use, the SRE Facility is situated in the secure Airport Air Operations Area directly adjacent to compatible, and even identical, existing Airport uses. While the intended use of the SRE Facility is clearly utilitarian, the building is nonetheless attractive in design, providing continuity and visual compatibility with nearby Airport uses and buildings. Additionally, while siting of the facility has been dictated by Airport operational needs and land availability, the office buildings that are in the general vicinity of the proposed SRE Facility are at a significant distance and provided substantial visual and sound buffering from the facility site.

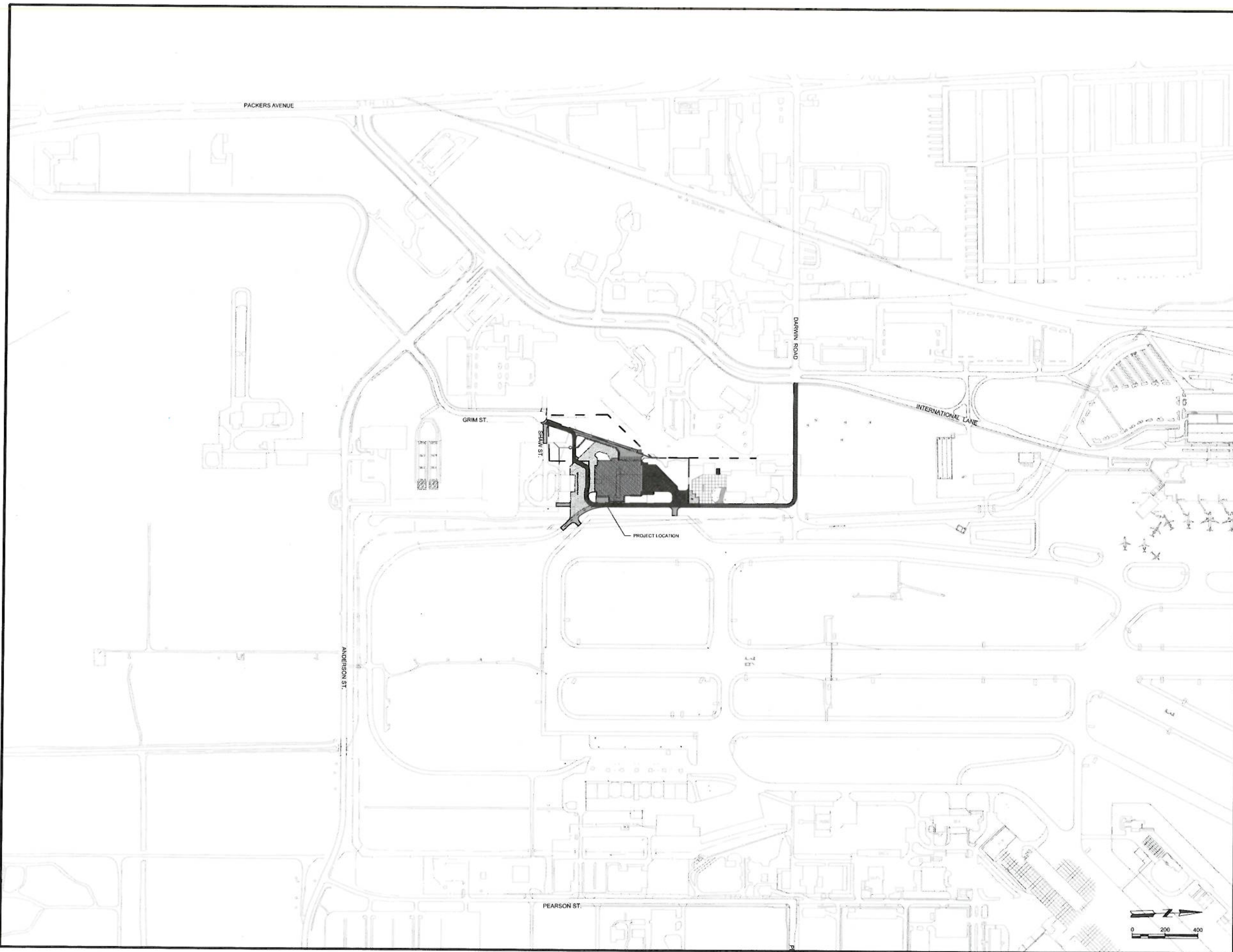
Based upon the foregoing and the material provided under cover of this letter, Dane County and the Dane County Regional Airport request initial and final approval of this project. Thank you for your consideration of this matter.

Regards,



Rodney F. Knight  
Airport Counselor  
Dane County Regional Airport  
4000 International Lane  
Madison, WI 53704  
knight@msnairport.com  
Telephone: (608) 246-3388

DATE: 11/05/12  
BY: CAG  
PROJECT: DANE COUNTY REGIONAL AIRPORT  
SHEET: 1





MEAD & HUNT  
CONSULTING ENGINEERS  
1000 W. MOUNTAIN VIEW  
SUITE 200  
MADISON, WISCONSIN 53704  
TEL: 608.261.1100  
WWW.MEAD-HUNT.COM



DANE COUNTY  
REGIONAL  
AIRPORT  
MADISON

**DANE COUNTY REGIONAL AIRPORT  
New Snow Removal Equipment (SRE) Facility**

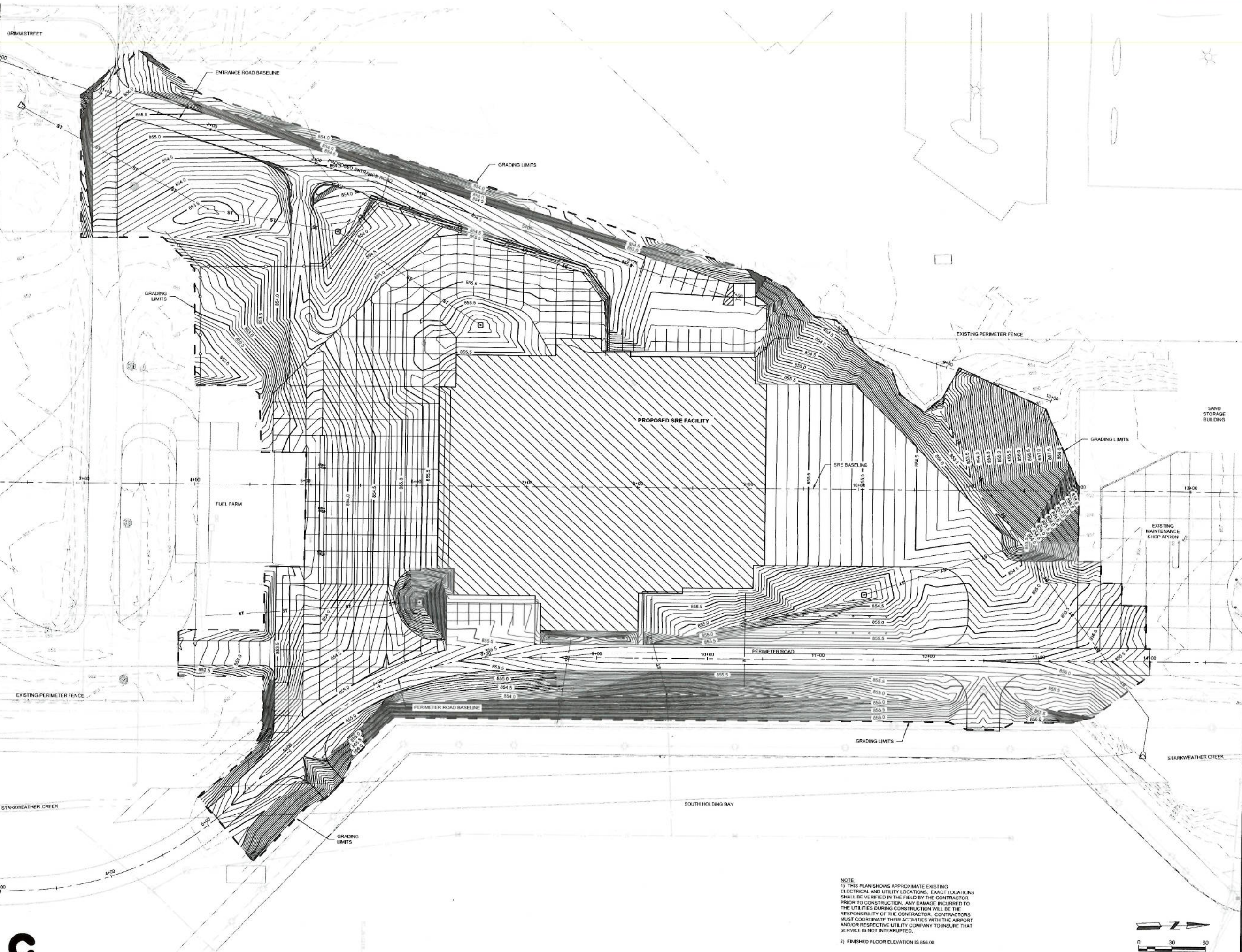
4000 INTERNATIONAL LANE  
MADISON, WISCONSIN 53704

PROJECT LOCATION









NOTE:  
1) THIS PLAN SHOWS APPROXIMATE EXISTING ELECTRICAL AND UTILITY LOCATIONS. EXACT LOCATIONS SHALL BE VERIFIED IN THE FIELD BY THE CONTRACTOR PRIOR TO CONSTRUCTION. ANY DAMAGE INCURRED TO THE UTILITIES DURING CONSTRUCTION WILL BE THE RESPONSIBILITY OF THE CONTRACTOR. CONTRACTORS MUST COORDINATE THEIR ACTIVITIES WITH THE AIRPORT AND/OR RESPECTIVE UTILITY COMPANY TO INSURE THAT SERVICE IS NOT INTERRUPTED.  
2) FINISHED FLOOR ELEVATION IS 856.00

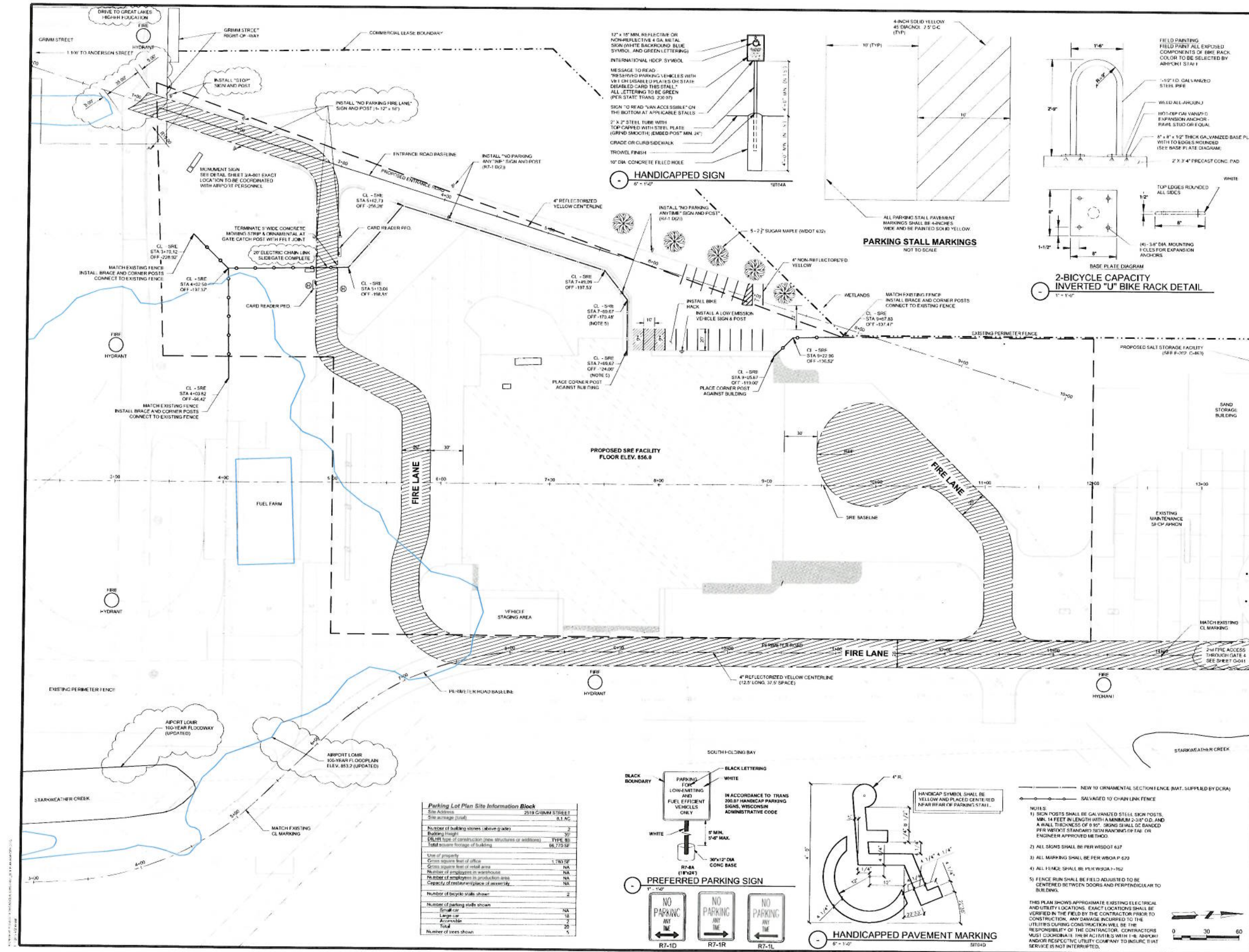
© Copyright  
This drawing is the property of Mead & Hunt, Inc. and is not to be reproduced, stored in a retrieval system, or transmitted in any form or by any means, electronic, mechanical, photocopying, recording, or by any information storage and retrieval system, without the prior written permission of Mead & Hunt, Inc.

**DANE COUNTY REGIONAL AIRPORT**  
**New Snow Removal Equipment (SRE) Facility**  
4000 INTERNATIONAL LANE  
MADISON, WISCONSIN 53704

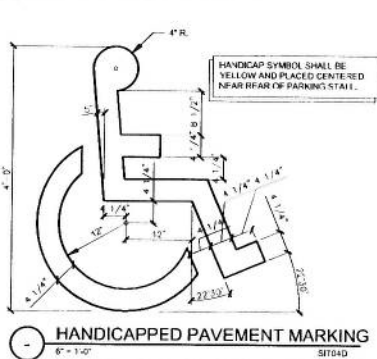
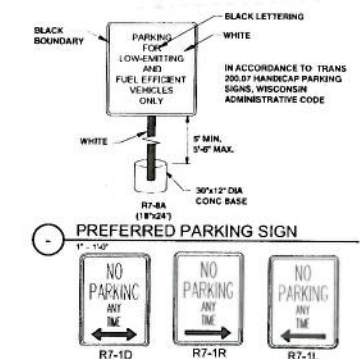


ISSUED FOR BIDS  
PROJECT: 3-55-0036-48  
SHEET NO: 2309036-113233.02  
DATE: NOVEMBER 5, 2012  
DESIGNED BY: CAR  
CHECKED BY: DLU  
DRAWN BY: DRP  
SCALE: AS SHOWN  
SHEET CONTENT: GRADING & DRAINAGE PLAN





Parking Lot Plan Site Information Block	
Site Address	2519 GRIMM STREET
Site Average (sq ft)	5.1 AC
Number of building stories (above grade)	2
Building length	30'
Number of employees in production area	TYPE BB
Number of employees in warehouse	NA
Number of employees in assembly area	NA
Number of employees in service area	NA
Number of employees in office	1,780 SF
Number of employees in retail area	NA
Number of employees in warehouse	NA
Number of employees in assembly area	NA
Number of employees in service area	NA
Number of employees in office	2
Number of parking stalls shown	76A
Small car	16
Large car	7
Accommodate	23
Number of trees shown	5



NEW 10' ORNAMENTAL SECTION FENCE (MAT. SUPPLIED BY DCRA)

SALVAGED 10' CHAIN LINK FENCE

NOTES:

- 1) SIGN POSTS SHALL BE GALVANIZED STEEL SIGN POSTS, MIN. 14 FEET IN LENGTH WITH A MINIMUM 2.38" O.D. AND A WALL THICKNESS OF 0.187". SIGNS SHALL BE GALVANIZED PER WISCONSIN STANDARD SIGN BANNING OF TAIL OR ENGINEER APPROVED METHOD.
- 2) ALL SIGNS SHALL BE PER WISDOT 637.
- 3) ALL MARKING SHALL BE PER WISDOT 620.
- 4) ALL FENCE SHALL BE PER WISDOT P-102.
- 5) FENCE RUN SHALL BE FIELD ADJUSTED TO BE CENTERED BETWEEN DOORS AND PERPENDICULAR TO BUILDINGS.

THIS PLAN SHOWS APPROXIMATE EXISTING ELECTRICAL AND UTILITY LOCATIONS. EXACT LOCATIONS SHALL BE VERIFIED IN THE FIELD BY THE CONTRACTOR PRIOR TO CONSTRUCTION. ANY DAMAGE INCURRED TO THE UTILITIES DURING CONSTRUCTION WILL BE THE RESPONSIBILITY OF THE CONTRACTOR. CONTRACTORS MUST COORDINATE WITH THE AIRPORT AND/OR RESPECTIVE UTILITY COMPANY TO INSURE THAT SERVICE IS NOT INTERRUPTED.

355-0036-48  
230936-113233-02  
NOVEMBER 6, 2012  
DRAWN BY: CAN  
CHECKED BY: DEL  
DESIGNED BY: DEL  
SRE SITE PLAN

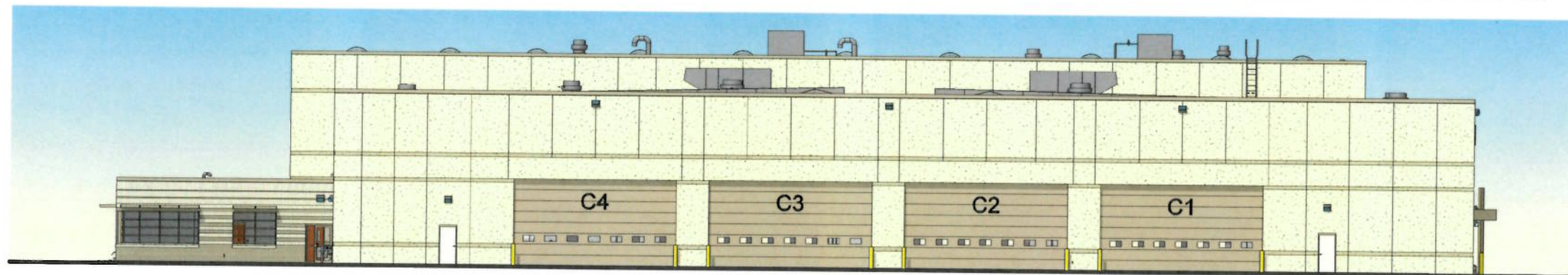
DANE COUNTY REGIONAL AIRPORT  
New Snow Removal Equipment (SRE) Facility  
4000 INTERNATIONAL LANE  
MADISON, WISCONSIN 53704

ISSUED FOR BIDS  
C-001

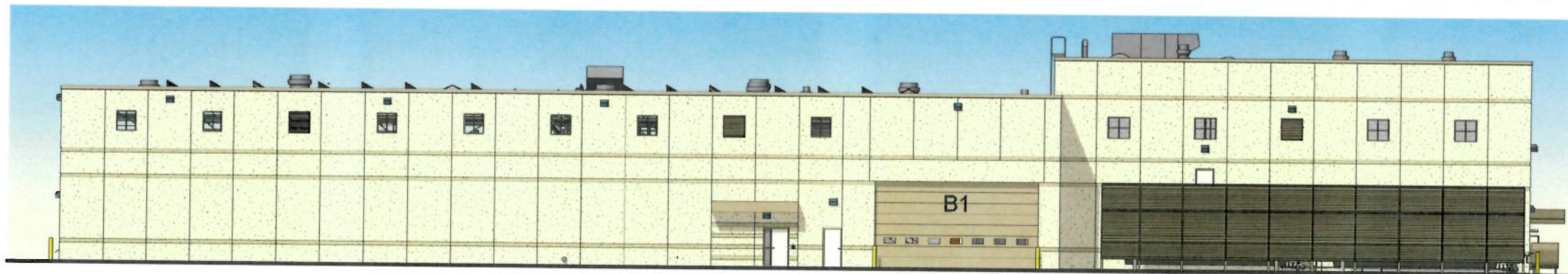




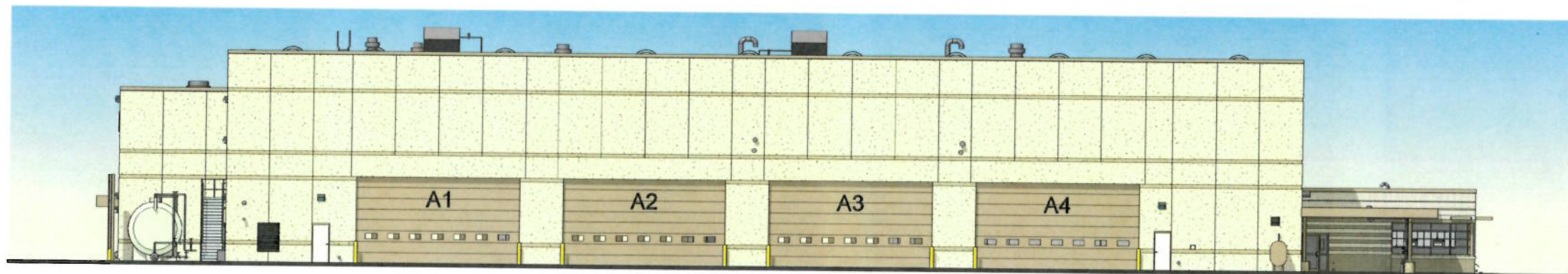
EAST ELEVATION



NORTH ELEVATION



WEST ELEVATION



SOUTH ELEVATION



New Snow Removal Equipment (SRE) Facility

ELEVATIONS

Mead  
& Hunt





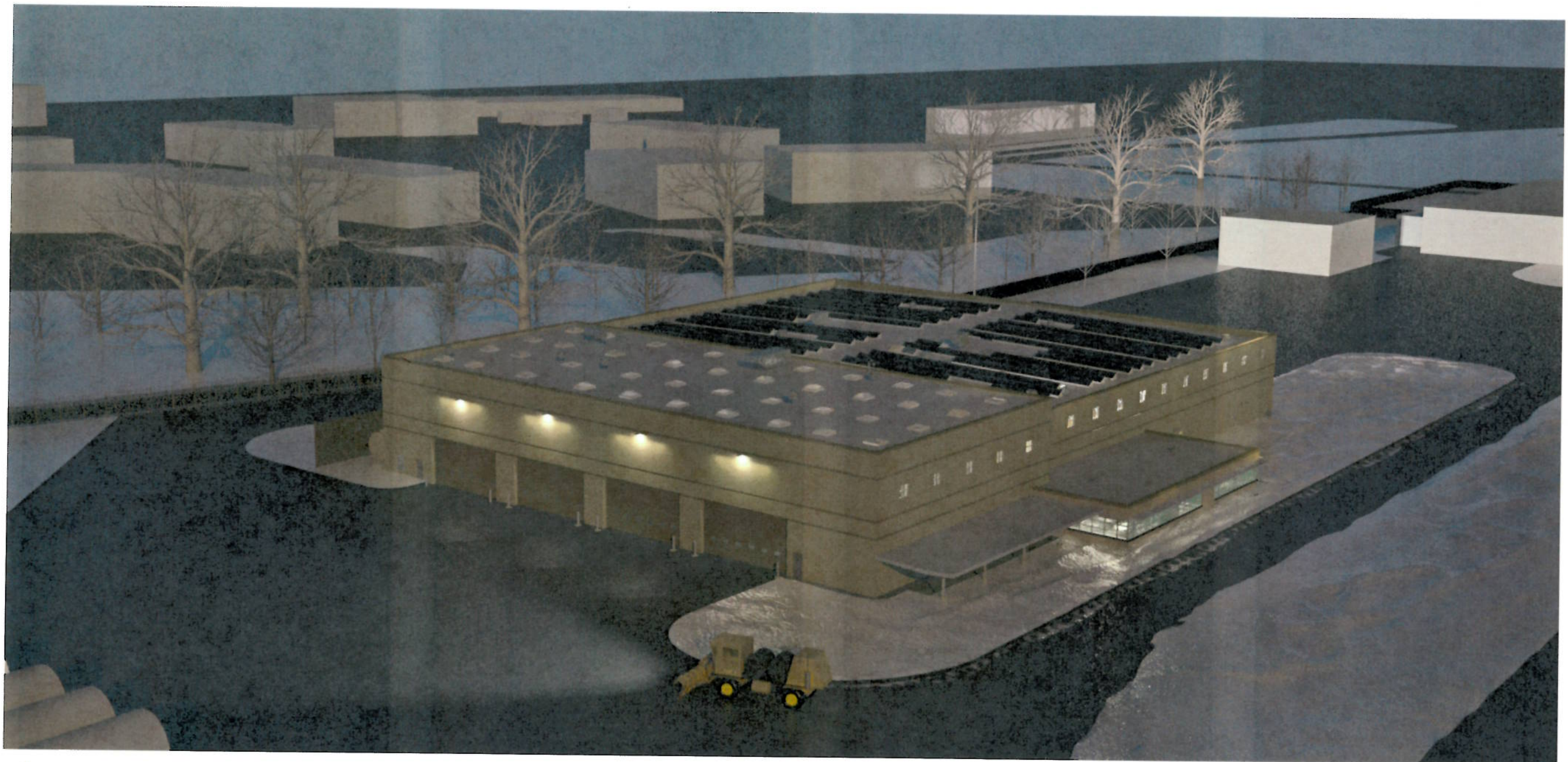
New Snow Removal Equipment (SRE) Facility

GROUND LEVEL VIEW FROM WEST

01/11/13

Mead  
& Hunt





New Snow Removal Equipment (SRE) Facility

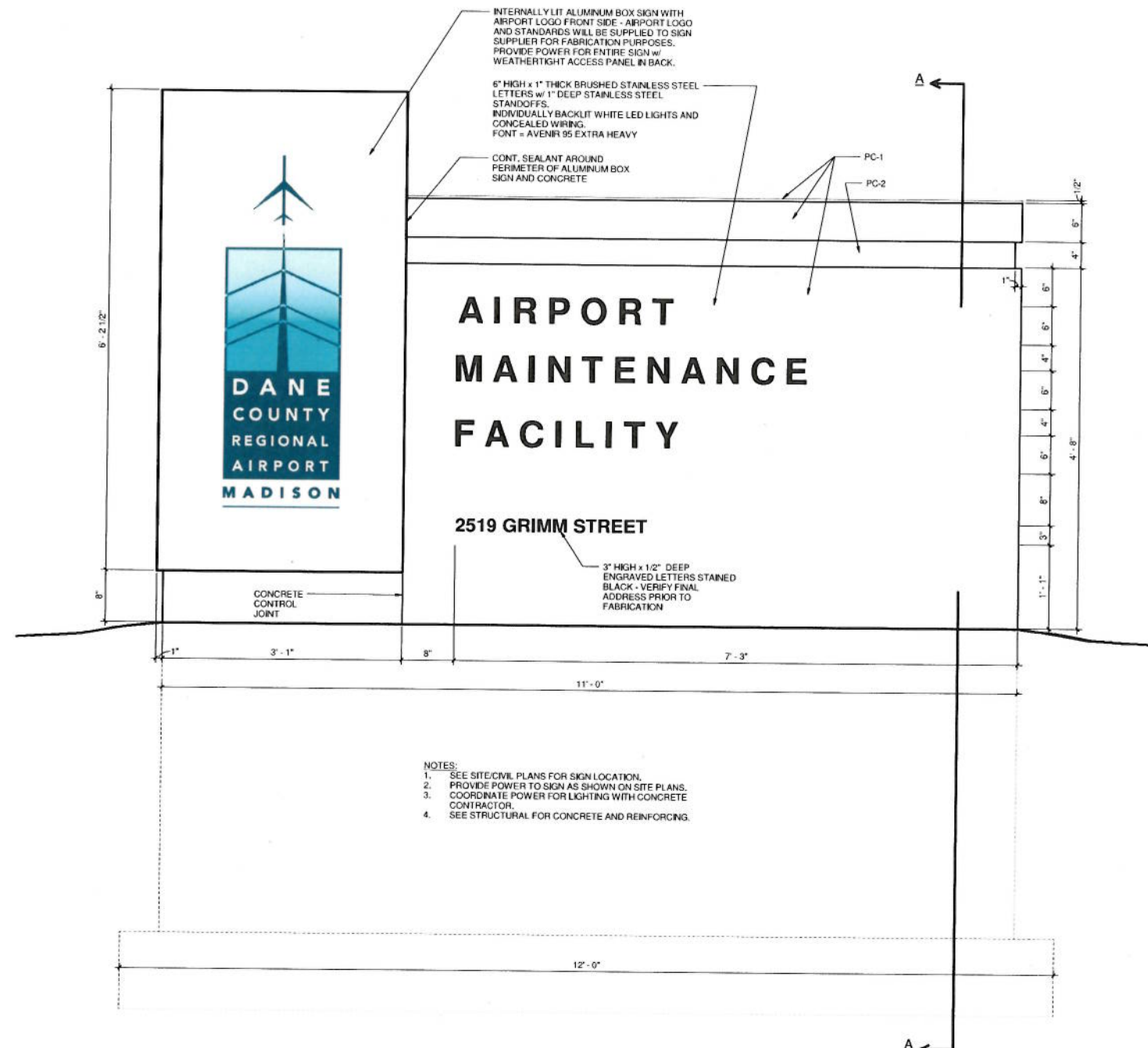
EVENING AERIAL VIEW FROM SOUTHEAST

Mead  
& Hunt

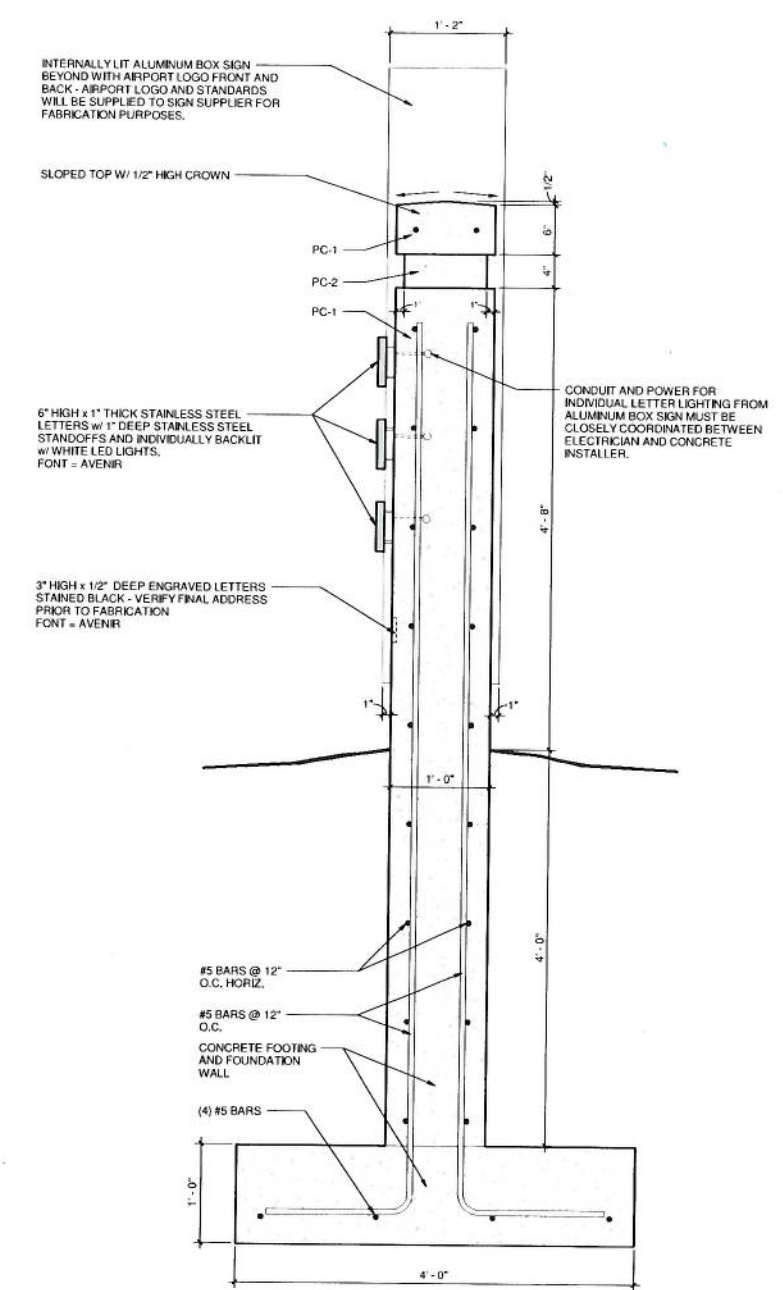
01/11/13

F





FRONT ELEVATION



SECTION A-A







SRE SITE LOOKING NORTH

SRE SITE LOOKING WEST



SRE SITE LOOKING EAST

SRE SITE LOOKING SOUTH

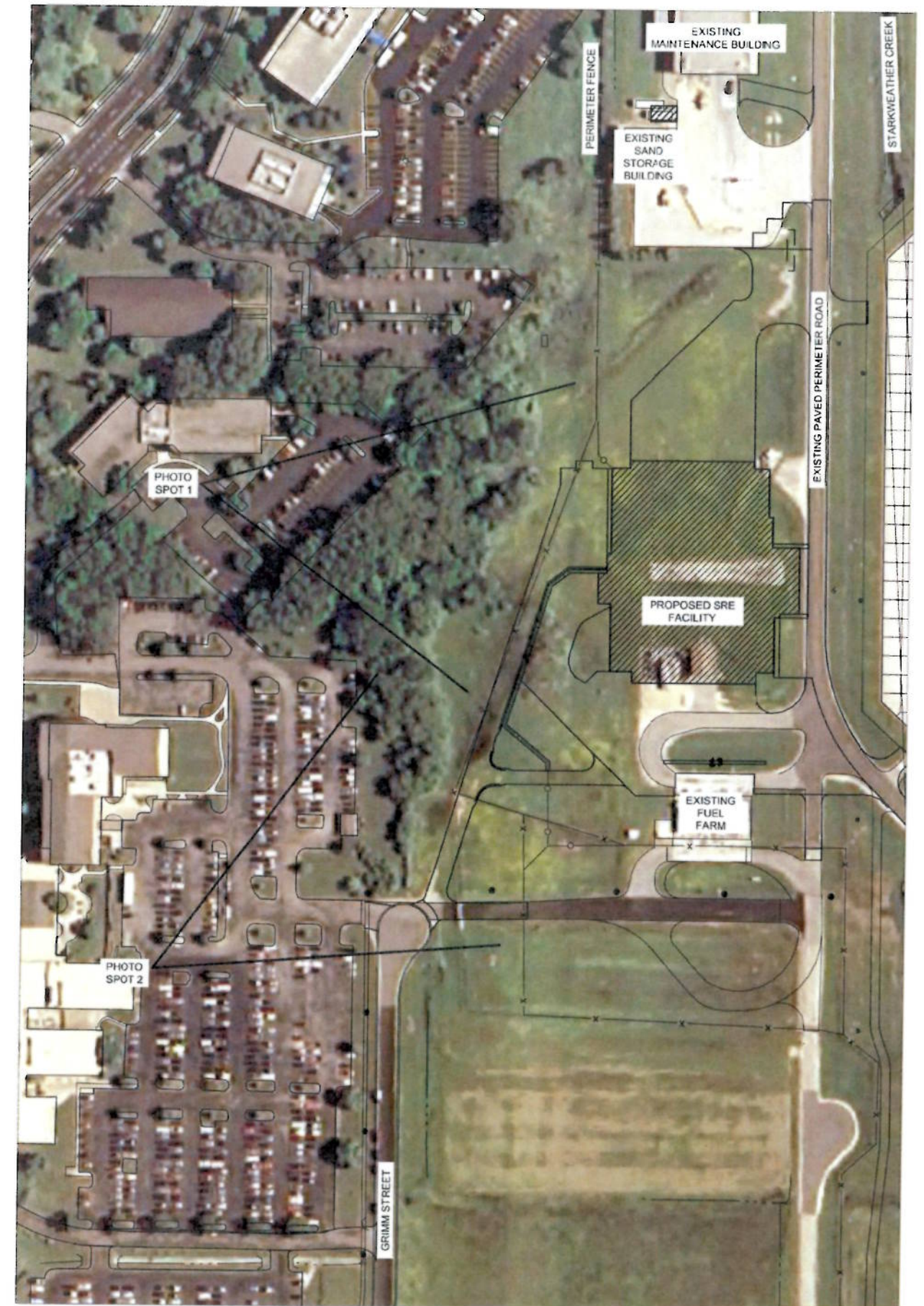






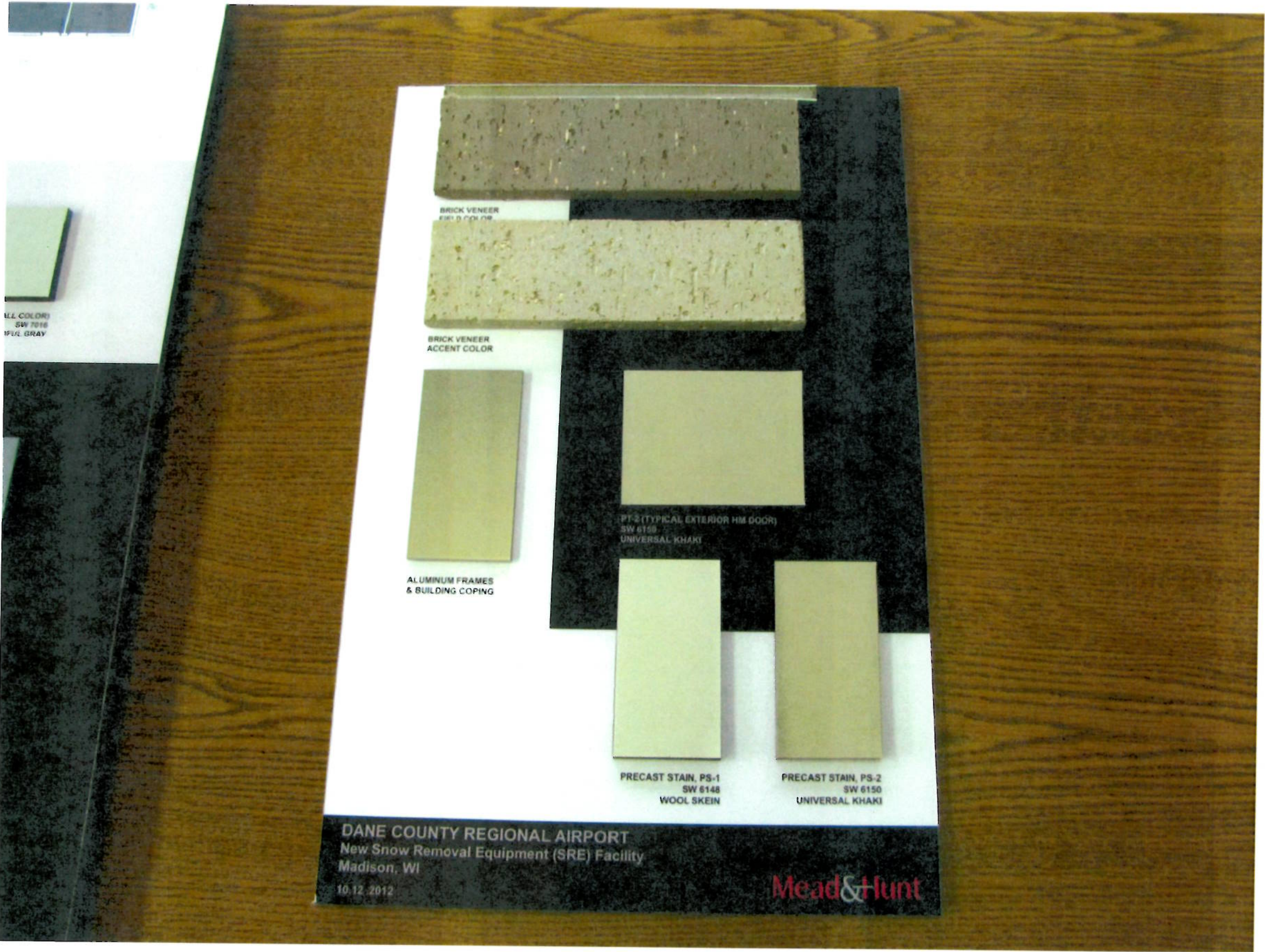
VIEW OF SRE SITE FROM WEST OFFICES (PHOTO SPOT 1)

VIEW OF SRE SITE FROM SOUTHWEST OFFICES (PHOTO SPOT 2)





DCRA SRE BUILDING  
EXTERIOR MATERIALS  
AND COLORS





## Area Luminaire - Type IV Medium - Direct Arm Mount

## Product Specifications

## CONSTRUCTION &amp; MATERIALS

- Slim, low profile, minimizing wind load requirements
- Luminaire sides are rugged die cast aluminum with integral, weather-tight LED driver compartments and high performance heat sinks
- Convenient interlocking mounting method. Mounting housing is rugged die cast aluminum mounting to 3-6" (76-152mm) square or round pole, secured by two (2) 5/16-18 UNC bolts spaced on 2" (51mm) centers
- Includes leaf / debris guard
- Exclusive Colorfast DeltaGuard<sup>®</sup> finish features an E-Coat epoxy primer with an ultradurable powder topcoat, providing excellent resistance to corrosion, ultraviolet degradation and abrasion. Standard is silver. Bronze, black, white, and platinum bronze are also available

## ELECTRICAL SYSTEM

- Input Voltage:** 120-277V or 347-480V, 50/60Hz, Class 1 drivers
- Power Factor:** > 0.9 at full load
- Total Harmonic Distortion:** < 20% at full load
- Integral weather-tight electrical box with terminal strips (12Ga-20Ga) for easy power hookup
- Integral 10kV surge suppression protection standard
- To address inrush current, slow blow fuse or type C/D breaker should be used

## REGULATORY &amp; VOLUNTARY QUALIFICATIONS

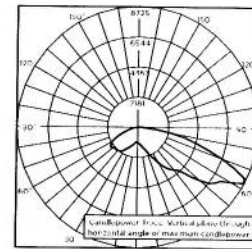
- cULus Listed
- Suitable for wet locations
- Enclosure rated IP66 per IEC 60529 when ordered without P or R options
- Consult factory for CE Certified products
- Certified to ANSI C136.31-2001, 3G bridge and overpass vibration standards
- 10kV surge suppression protection tested in accordance with IEEE/ANSI C62.41.2
- Luminaire and finish endurance tested to withstand 5,000 hours of elevated ambient salt fog conditions as defined in ASTM Standard B 117
- Product qualified on the DesignLights Consortium ("DLC") Qualified Products List ("QPL") when ordered without the backlight control shield
- Dark Sky Friendly, IDA Approved
- RoHS Compliant
- Meets Buy American requirements within ARRA

## PATENTS

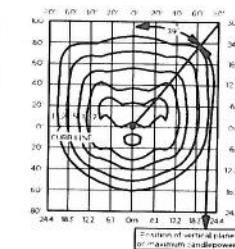
- Visit website for patents that cover these products:  
Patents <http://www.cree.com/patents>

## Photometry

All published luminaire photometric testing performed to IESNA LM-79-08 standards by Independent Testing Laboratories, a NVLAP<sup>®</sup> certified laboratory



ITL Test Report #: 68090  
ARE-EDG-4M-12-D-UL-525-43K  
Initial Delivered Lumens: 14,934



ARE-EDG-4M-12-D-UL-525-40K  
Mounting Height: 25' (7.6m) A.F.G.  
Initial Delivered Lumens: 14,583  
Initial FC at grade

## IES Files

To obtain an IES file specific to your project consult:  
<http://www.cree.com/lighting/tools-and-support/external-ies-configuration-tool>

## Lumen Output, Electrical, and Lumen Maintenance Data

Type IV Medium Distribution												
LED Count (x10)	5700K		4000K		System Watts 120-480V	TOTAL CURRENT						50K Hours Projected Lumen Maintenance Factor @ 15° C (59° F)**
	Initial Delivered Lumens	BUG Ratings* Per TM-211	Initial Delivered Lumens	BUG Ratings* Per TM-211		120V	208V	240V	277V	347V	480V	
350mA @ 25° C (77° F)												
02	1,913	B1 U0 G1	1,763	B1 U0 G1	26	0.20	0.13	0.11	0.10	0.09	0.07	93%
04	3,826	B1 U0 G1	3,526	B1 U0 G1	47	0.40	0.24	0.21	0.19	0.15	0.12	
06	5,665	B2 U0 G2	5,221	B2 U0 G1	68	0.58	0.34	0.30	0.26	0.20	0.16	
08	7,554	B2 U0 G2	6,962	B2 U0 G2	90	0.77	0.44	0.38	0.34	0.26	0.20	
10	9,419	B2 U0 G2	8,681	B2 U0 G2	111	0.95	0.55	0.47	0.42	0.32	0.24	
12	11,302	B3 U0 G3	10,417	B2 U0 G2	132	1.15	0.66	0.56	0.50	0.38	0.28	
14	13,126	B3 U0 G3	12,098	B3 U0 G3	157	1.34	0.78	0.67	0.61	0.47	0.35	
16	15,001	B3 U0 G3	13,826	B3 U0 G3	179	1.54	0.89	0.76	0.68	0.53	0.39	
20	18,752	B3 U0 G3	17,282	B3 U0 G3	221	1.92	1.10	0.95	0.84	0.65	0.48	
24	22,502	B3 U0 G3	20,739	B3 U0 G3	264	2.30	1.31	1.12	1.00	0.77	0.56	
525mA @ 25° C (77° F)												
02	2,678	B1 U0 G1	2,469	B1 U0 G1	37	0.51	0.19	0.17	0.16	0.12	0.10	92%
04	5,357	B2 U0 G1	4,937	B2 U0 G1	70	0.57	0.33	0.29	0.26	0.21	0.16	
06	7,932	B2 U0 G2	7,310	B2 U0 G2	102	0.87	0.50	0.44	0.39	0.30	0.22	
08	10,575	B2 U0 G2	9,747	B2 U0 G2	133	1.14	0.65	0.56	0.49	0.39	0.29	
10	13,186	B3 U0 G3	12,153	B3 U0 G3	172	1.47	0.85	0.75	0.67	0.51	0.38	
12	15,823	B3 U0 G3	14,583	B3 U0 G3	204	1.76	1.01	0.88	0.78	0.60	0.44	
14	18,377	B3 U0 G3	16,937	B3 U0 G3	233	2.01	1.14	0.99	0.87	0.69	0.51	
16	21,002	B3 U0 G3	19,356	B3 U0 G3	265	2.29	1.29	1.11	0.98	0.78	0.57	
700mA @ 25° C (77° F)												
02	3,271	B1 U0 G1	3,015	B1 U0 G1	50	0.42	0.25	0.22	0.20	0.15	0.12	90%
04	6,543	B2 U0 G2	6,030	B2 U0 G2	93	0.79	0.45	0.40	0.35	0.27	0.20	
06	9,688	B2 U0 G2	8,929	B2 U0 G2	137	1.18	0.67	0.59	0.51	0.39	0.29	

\* For more information on the IES BUG (Backlight-Uplight-Glare) Rating visit [www.iesna.org/PDF/Erratas/TM-15-II-BugRatingsAddendum.pdf](http://www.iesna.org/PDF/Erratas/TM-15-II-BugRatingsAddendum.pdf)

\*\* Projected L<sub>70</sub> (10K) Hours: >60,000 - For recommended lumen maintenance factor, data see TD-13

© 2012 Cree, Inc. and/or one of its subsidiaries. All rights reserved. For informational purposes only. See [www.cree.com/lighting](http://www.cree.com/lighting) for warranty terms. Cree<sup>®</sup>, the Cree logo, the BetaLED, NanoOptic, and Colorfast DeltaGuard are registered trademarks and the BetaLED Technology logo is a trademark of Cree, Inc. or one of its subsidiaries.  
[www.cree.com/lighting](http://www.cree.com/lighting) T (800) 236-6800 F (262) 504-5415

THE EDGE<sup>®</sup> ARE-EDG-4M-DA

Area Luminaire - Type IV Medium - Direct Arm Mount

## Product Description

Slim, low profile design minimizes wind load requirements. Luminaire sides are rugged cast aluminum with integral, weather-tight LED driver compartments and high performance aluminum heat sinks. Convenient, interlocking mounting method. Mounting housing is rugged die cast aluminum and mounts to 3-6" (76-152mm) square or round pole. Luminaire is secured by two (2) 5/16-18 UNC bolts spaced on 2" (51mm) centers.

## Performance Summary

Utilizes BetaLED<sup>®</sup> Technology

Patented NanoOptic<sup>®</sup> Product Technology

Made in the U.S.A. of U.S. and imported parts

CRI: Minimum 70 CRI

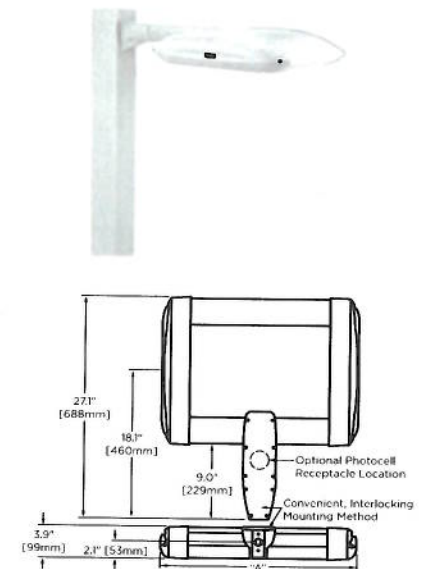
CCT: 5700K (+/- 500K) Standard, 4000K (+/- 300K)

Warranty: 5 years on luminaire / 10 years on Colorfast DeltaGuard<sup>®</sup> finish

EPA and Weight: Reference EPA and Weight spec sheet

## Accessories

Field Installed Accessories
XA-BRDSPK Bird Spikes



LED Count (x10)	Dim, "A"
02	12.1" [306mm]
04	12.1" [306mm]
06	14.1" [357mm]
08	16.1" [408mm]
10	18.1" [459mm]
12	20.1" [510mm]
14	22.1" [560mm]
16	24.1" [611mm]
20	28.1" [713mm]
24	32.1" [814mm]

## Ordering Information

Example: ARE-EDG-4M-DA-02-D-UL-SV-350-OPTIONS

ARE-EDG	4M	DA	12	D	UL	XX	350	40K
Product	Optic	Mounting	LED Count (x10)	Version	Voltage	Color Options	Drive Current	Options
ARE-EDG	4M Type IV Medium	DA Direct Arm	02 04 06 08 10 12 14 16 20 24	D	UL Universal 120-277V UH Universal 347-480V 34 347V	SV Silver (Standard) BK Black BZ Bronze PB Platinum Bronze WH White	350 350mA 525 525mA 700 700mA	40K 4000K Color Temperature - Color temperature per luminaire DIM 0-10V Dimming - Control by others - Refer to dimming spec sheet for details - Can't exceed specified drive current F Fuse - When code dictates fusing, use time delay fuse - Not available with all ML options. Refer to ML spec sheet for availability with ML options HL Hi / Low (175/350/525 Dual Circuit Input) - Refer to ML spec sheet for details - Sensor not included P Photocell - Not available with all ML options. Refer to ML spec sheet for availability with ML options - Must specify voltage other than UH R NEMA Photocell Receptacle - Not available with all ML options. Refer to ML spec sheet for availability with ML options - Intended for horizontal mounting - Photocell by others ML Multi-Level - Refer to ML spec sheet for details

\* Available on luminaires with 20-160 LEDs

\*\* Available on luminaires with 20-60 LEDs



Rev. Date: 6/26/2012



[www.cree.com/lighting](http://www.cree.com/lighting)

T (800) 236-6800 F (262) 504-5415



## POWER AND LUMENS BY BAR COUNT

# of Bars	System Watts	Type BL2 Lumens	Type BL3 Lumens	Type BL4 Lumens	Ambient Temperature	Lumen Multiplier
1 Bar	26	1,626	1,823	1,918	10°C	1.04
2 Bars	53	3,252	3,647	3,836	15°C	1.03
					25°C	1.00
					40°C	0.96
<b>Options</b>						
	<b>System Watts</b>	<b>Lumens</b>				
ULG	8	315				

NOTE: Lumen values based upon 4000K CCT, 350mA drive current, 25°C ambient operating temperature.

## ORDERING INFORMATION

ENC-CO2-LED-E1-BL3-XX-2L

Sample Number: ENC-B02-LED-E1-BL3-GM

<b>Product Family</b> ENC: Entri Round Clean	<b>Lamp Type</b> LED: Solid State Light Emitting Diodes	<b>Finish</b> <sup>3</sup> BK: Black AP: Grey BZ: Bronze WH: White DP: Dark Platinum GM: Graphite Metallic	<b>Options</b> <sup>4</sup> ULG: Uplight Glow PC: Button Type Photocell (Available in 120V, 208V, 240V, and 277V) WG: Wire Guard 2L: Two Circuits* TP: Tamper Resistant Hardware LCF: LightBAR Cover Plate Matches Housing Finish 7060=70 CRI/6000K CCT* 8030=80 CRI/3000K CCT* OSB=Occupancy Sensor with Back Box BBB=Battery Pack with Back Box (Specify 120 or 277) CWB=Cold Weather Battery* Pack with Back Box (Specify 120 or 277)	<b>Accessories</b> <sup>10</sup> VA2001-XX: Thru-Way Conduit Adaptor Box VA6172: Wire Guard VA6173: Tamper Resistant Driver Bits MA1253: 10kV Circuit Module Replacement
<b>Number of</b> <sup>1,2</sup> <b>Lightbars</b> B01: [1] 21 LED LightBAR B02: [2] 21 LED LightBARs C01: [1] 7 LED LightBARs C02: [2] 7 LED LightBARs	<b>Voltage</b> E1: Electronic (120-277V) 347: 347V 480: 480V	<b>Distribution</b> BL2=Type II w/Back Light Control BL3=Type III w/Back Light Control BL4=Type IV w/Back Light Control GZW=Wall Grazer Wide SLL=90 Degree Spill Light Eliminator Left SLR=90 Degree Spill Light Eliminator Right		

- Notes: 1 Standard 4000 K CCT and greater than 70 CRI. LightBARs for downlight use only.  
2 21 LED LightBAR powered at 350mA, 7 LED LightBAR powered at 1A.  
3 Custom and RAL color matching available upon request. Consult your customer service representative for further information.  
4 Add as suffix in the order shown.  
5 Low-level output varies by bar count, consult factory. Not available with 347V or 480V. Available with 2 Bars (B02 or C02) only.  
6 Consult customer service for lead times and lumen multiplier.  
7 Available with B02 or C02, only (1) LightBAR on street side will be wired to sensor. Time Delay factory setting 15 minutes. When ordered with Option PC, both light bars will be connected to photocell as primary switching means. Standard sensor lens covers 8-foot mount height, 300-degree coverage, maximum 48-foot diameter. Not available in all configurations or with BBB or CWB options.  
8 Specify 120 or 277V. LED standard integral battery pack is rated for minimum operating temperature 32°F (0°C). Operates (1) lightbar for 90 minutes. Not available in all configurations or with OSB option. Consult factory.  
9 Specify 120 or 277V. LED cold weather integral battery pack is rated for minimum operating temperature -4°F (-20°C). Operates (1) lightbar for 90 minutes. Not available in all configurations or with OSB option.  
10 Order separately, replace XX with color suffix.

## DESCRIPTION

Entri LED features a classic and stylish design with the added benefits of solid state lighting technology, offering outstanding uniformity and energy savings. Using Cooper Lighting's proprietary LED LightBAR™ technology and AccuLED optical systems, Entri LED offers designers vast versatility in system design, function and performance. Use Entri LED for wall mount architectural lighting applications and egress lighting requirements. UL and cUL listed for use in wet locations.

## SPECIFICATION FEATURES

## Construction

HOUSING: Heavy wall, one-piece die-cast aluminum construction for precise tolerance control and repeatability in manufacturing. Integral extruded aluminum heat sink provides superior thermal heat transfer in +40°C ambient environments. Housing and heat sink are designed to offer various options for down lighting, up lighting or a combination of both up and down. FACEPLATE / DOOR: One-piece, die-cast aluminum construction. Captive, side hinged faceplate swings open via release of one (1) flush mount die-cast aluminum latch on housing side panel. Door closure and seal is ensured through a robust and positive retention bale latch which upon closing can be heard through distinct sound. GASKET: One-piece molded silicone gasket mates perfectly between the door and housing for repeatable seal. Silicone wire way plug on housing back wall seals incoming electrical leads to prevent moisture and dust entry. LENS: Uplight lens is impact resistant, 5/32" thick tempered frosted glass sealed to housing with continuous bead silicone gasket. Downlight lens is LED board integrated acrylic over-optics, each individually sealed for IP66 rating. HARDWARE: Stainless steel mounting screws and latch hardware allow access to electrical components for installation and servicing.

## Optics

DISTRIBUTION: Primary downlight distribution offers a choice of six (6) high efficiency AccuLED optical systems, featuring patented designs that maximize light collection and directional distribution onto the application region. Each optical lens is precision manufactured via injection molding then precisely arranged and sealed on the board media. Optional uplight LED distribution features a diffuse soft glow for enhancing architectural scenes or accentuating structural features. LEDs: High output LEDs, 50,000+ hours life at >70% lumen maintenance, offered standard in 4000K (+/- 275K) CCT and nominal 70 CRI.

## Electrical

DRIVER: LED drivers are potted and heat sunk for optimal performance and prolonged life. Standard drivers feature electronic universal voltage (120-277V/50-60Hz), greater than 0.9 power factor, less than 20% harmonic distortion and feature ambient temperature range of +40°C (104°F) down to minimum starting temperature of -30°C (-22°F). Shipped standard with Cooper Lighting proprietary circuit module designed to withstand 10kV of transient line surge. Options to control light levels, energy savings and egress capabilities (battery pack and separate circuit) are available. All LED LightBARs™ and drivers are mounted to a primary mounting plate and are easily replaced by use of quick disconnects for ease of wiring.

## Mounting

JUNCTION BOX: Standard with zinc-plated, quick-mount junction box plate that mounts directly to 4" J-Box. LightBARs mount facing downward. Fixture slides over mounting plate and is secured with two (2) stainless steel fasteners. Mounting plate features a one-piece EPDM gasket on back side of plate to firmly seal fixture to wall surface, forbidding entry of moisture and particulates. Optional mounting arrangements utilize a die-cast mounting adaptor box to allow for LED battery pack, surface conduit and through branch wiring. Entri LED is approved for mounting on combustible surfaces.

## Finish

Housing is finished in 5 stage super premium TGIC polyester powder coat paint, 2.5 mil nominal thickness for superior protection against fade and wear. LightBAR™ cover plates are standard white and may be specified to match finish of luminaire housing. Standard colors include black, bronze, grey, white, dark platinum and graphite metallic. RAL and custom color matches available. Consult Outdoor Architectural Colors brochure for a complete selection.

## Warranty

Entri LED features a 5 year limited warranty.

INVUE®



Catalog #	Type
Project	EX2
Comments	Date
Prepared by	

ENC  
ENTRI  
LED ROUND  
CLEAN1-2 LightBARs  
Solid State LEDARCHITECTURAL WALL  
LUMINAIRE

Sustainable Design

DESIGNLIGHTS  
CONSORTIUM

## CERTIFICATION DATA

40°C Ambient Temperature Rating  
UL and cUL Listed  
ISO 9001  
IP66 LightBARs  
ARRA Compliant  
LM79 / LM80 Compliant

## ENERGY DATA

Electronic LED Driver  
>0.9 Power Factor  
<20% Total Harmonic Distortion  
120-277V/50 & 60Hz, 347V/60Hz,  
480V/60Hz  
-30°C Minimum Temperature

## SHIPPING DATA

Approximate Net Weight:  
16 lbs. (7.3 kgs.)



AVU092076 pc  
2011-07-11 09:54:21



## Downlites

### D180 SERIES

#### Specifications

##### Construction

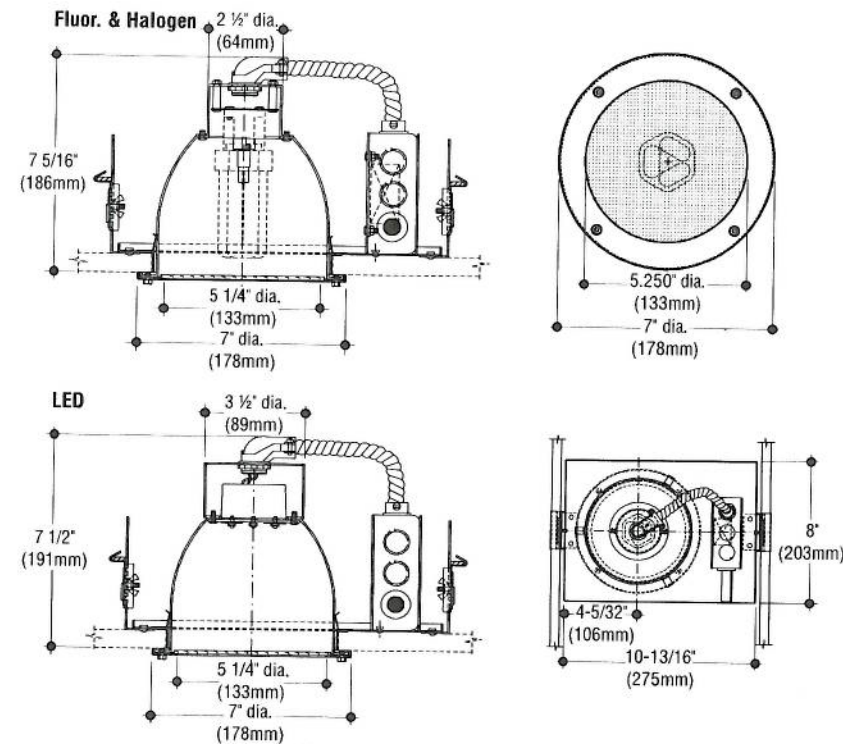
• Reflector/housing is spun aluminum • Trim is spun 18 gauge satin finished stainless steel, gasketed and retained by four stainless steel tamperproof socket cap screws • Reflector semi-specular is white aluminum • Optional guard is 1/4" diameter stainless steel • Shielding is available frosted tempered glass • Prismatic C73 tempered glass and opal glass

##### Electrical

• Wired for one compact fluorescent, halogen lamp, or LED as specified • Ballast (fluorescent), 120V-12V electronic transformer (halogen), and driver (LED) is integral • Fluorescent is 120V (277V/347V optional), halogen, and LED is 120V only • Halogen models suitable for wet locations in non-IC wall construction only • cETLus listed • Fluorescent and LED models suitable for wet locations in IC/non-IC ceiling construction

##### Mounting

Housing has flange with holes for mounting.



#### Catalog Numbers

Lamps	No Guard	With Guard
One 13W (GX24q-1 base) "triple" compact fluorescent	DF183-13	DF181-13
One 50W (GY6.35 base) 12V halogen	DT183-50	DT181-50
One 15W LED Engine, 645 lumens at 3000°K	DL183-15	DL181-15

#### Options

**Alternate Finishes:** Satin brass with stainless steel guard -SBR, Polished stainless steel -PSS, Painted black with stainless steel guard -BLK.

#### Ballasts (fluorescent only):

277V or 347V ballast. Add suffix -277 or -347.

**Transformers and Drivers (halogen and LED only):** 120V only.

**Clear Prismatic Glass Lens:** Add suffix -PG.

**Tempered Glass Diffuser:** Flat, sandblasted. (standard on fluorescent and halogen models)

Add suffix -TG.

**Opal Glass Diffuser:** (standard on LED models)

Add suffix -OPL.

**Weatherproof Gasket:** Add suffix -W.

#### How to Specify

1. Select catalog number with desired features.
2. Add suffixes for options required to meet job conditions.

W/ 277V XFMR

**COLE**  
*Lighting*

C. W. Cole & Company, Inc.  
2560 N. Rosemead Boulevard  
South El Monte, CA 91733-1593

Fax (626) 443-9253

Tel. (626) 443-2473

info@colelighting.com

www.colelighting.com

## Downlites

### D180 SERIES

#### Description

Cole offers Downlites that provide efficient illumination. The fine satin or polished metal finishes add a premium quality appearance and the frosted diffuser provides smooth illumination. Fixtures are furnished with stainless steel trims which solidly attach to corrosion resistant aluminum housings. Fixtures are suitable for dry ceiling construction. These fixtures are particularly suitable for application in canopy areas, showers, restrooms, stairway landings, and other areas where sleek styling and corrosion resistance carry a special premium.

#### Features

Stainless steel and aluminum construction provide corrosion resistant durability. Three source options are available.

#### Applications

Downlites are best suited for outdoor canopies, loading areas, and other exposed locations in schools, sports venues, and industrial facilities.

#### Custom

If your project demands a special fixture we would be pleased to discuss the production of custom fixtures to suit your specific conditions. For more information on our custom capabilities, please contact your local Cole representative.



**Satin Stainless Steel Trim with Opal Glass Diffuser.**  
(Standard when LED is specified)



**Polished Stainless Steel Trim with Protective Guard and Frosted Glass Diffuser.**



**Satin Stainless Steel Trim with Frosted Glass Diffuser.**

**COLE**  
*Lighting*

C. W. Cole & Company, Inc.  
2560 N. Rosemead Boulevard  
South El Monte, CA 91733-1593

Fax (626) 443-9253

Tel. (626) 443-2473

info@colelighting.com

www.colelighting.com





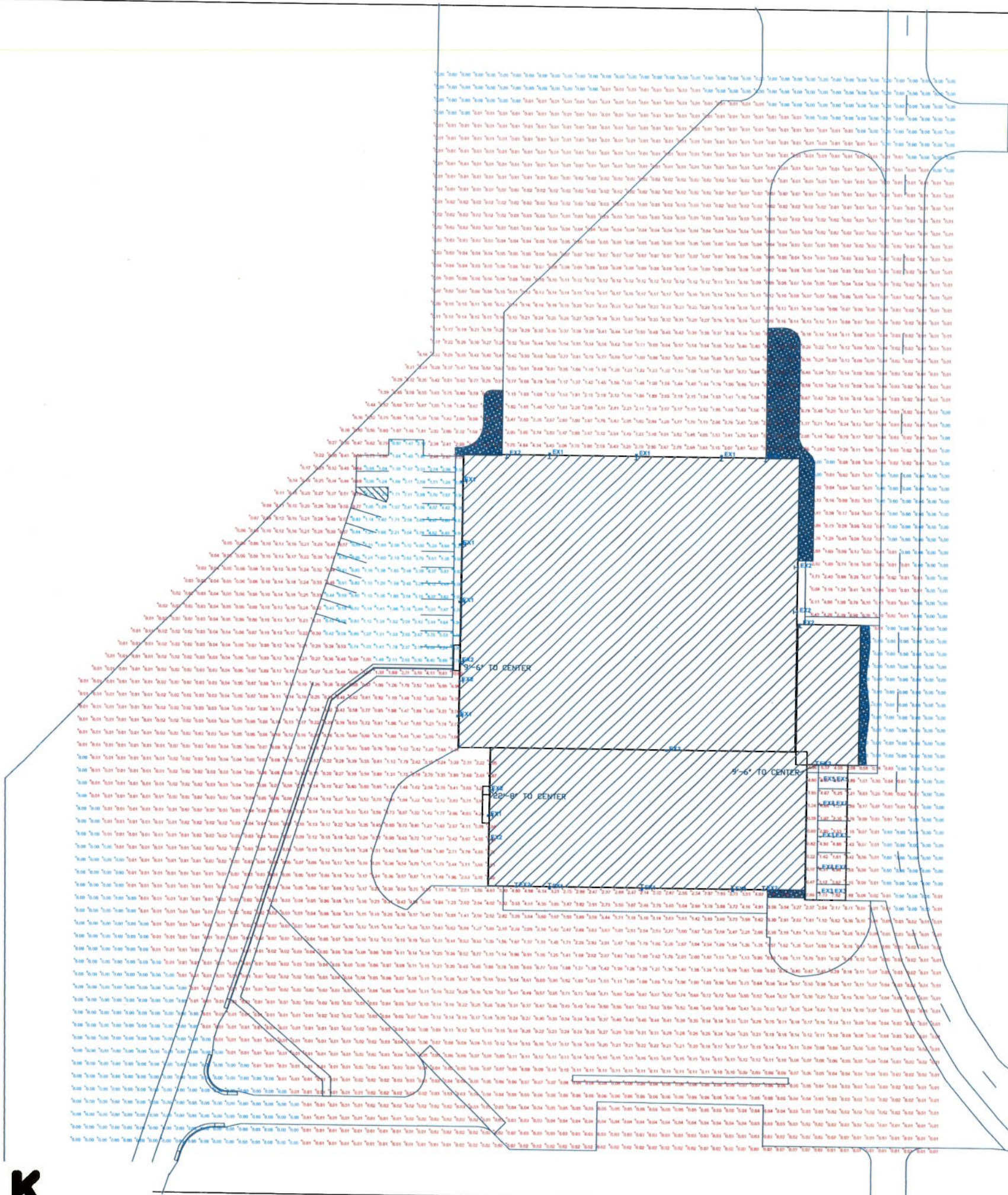
Dane County Regional Airport - New SRE Facility

Designer  
IBC Engineering

Date  
Dec 03, 2012

Scale  
1" = 25'

Drawing No.  
SITE CALC - 01



LUMINAIRE SCHEDULE							
Symbol	Label	Qty	Catalog Number	Description	Lamp	File	Lumens LLF Watts
	EX1	11	ARE-EDS-4M-12-120	LED TYPE IV QUAD-SP-4-1K-CP MEDIUM SQUARE-4000K EDGE AREA	ONE HUNDRED TWENTY WHITE LIGHT EMITTING DIODES (LED) VERTICAL BASE-UP POSITION	ARE-EDG-4M-Absolu	1,000 100.3
	EX2	11	ENC-CD24ED-E1- BL3	ENTIRE LED LUMINAIRE 20 LIGHT BARS WITH ADJUSTED OPTICS - TYPE 3 W SPILL LIGHT CONTROL ABSOLUTE PHOTOMETRY IS BASED ON CALIBRATION FACTORS CREATED USING LAB LUMEN STANDARDS IN CONFORMITY WITH TEST DISTANCE OF 28.75 FEET		ENC-CD24ED- Absolute E1-BL3.jpg	1,000 54
	EX3	10	ML705040- 494H506	LED DOWNLIGHT	LED	ML705040- 494H506.jpg	600 1.00 13.6

STATISTICS						
Description	Symbol	Avg	Max	Min	Max/Min	Avg/Min
NEW FIXTURES		2.49 ft	8.76 ft	0.42 ft	20.9:1	5.9:1
property line at 4' AFD		0.1 ft	0.5 ft	0.0 ft	N/A	N/A
SETE		0.55 ft	10.06 ft	0.06 ft	N/A	N/A

MOUNTING HEIGHTS FOR ALL EX1 FIXTURES IS 30'-0" AFG, UNLESS NOTED OTHERWISE  
MOUNTING HEIGHTS FOR ALL EX2 FIXTURES IS 12'-0" AFG, UNLESS NOTED OTHERWISE