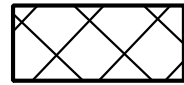
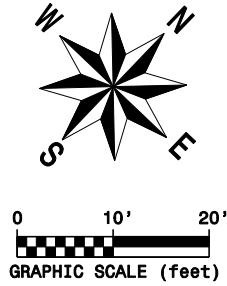
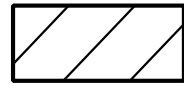




Madison, Wisconsin



PLE FOR PUBLIC SANITARY SEWER



TLE FOR CONSTRUCTION

--- UNDERLYING PLATTED LOT LINE

--- EXISTING MG&E EASEMENT LIMITS

RELOCATION ORDER APPROVED
BY THE COMMON COUNCIL

CITY CLERK

DATE

RELOCATION ORDER APPROVED
BY THE BOARD OF PUBLIC WORKS:

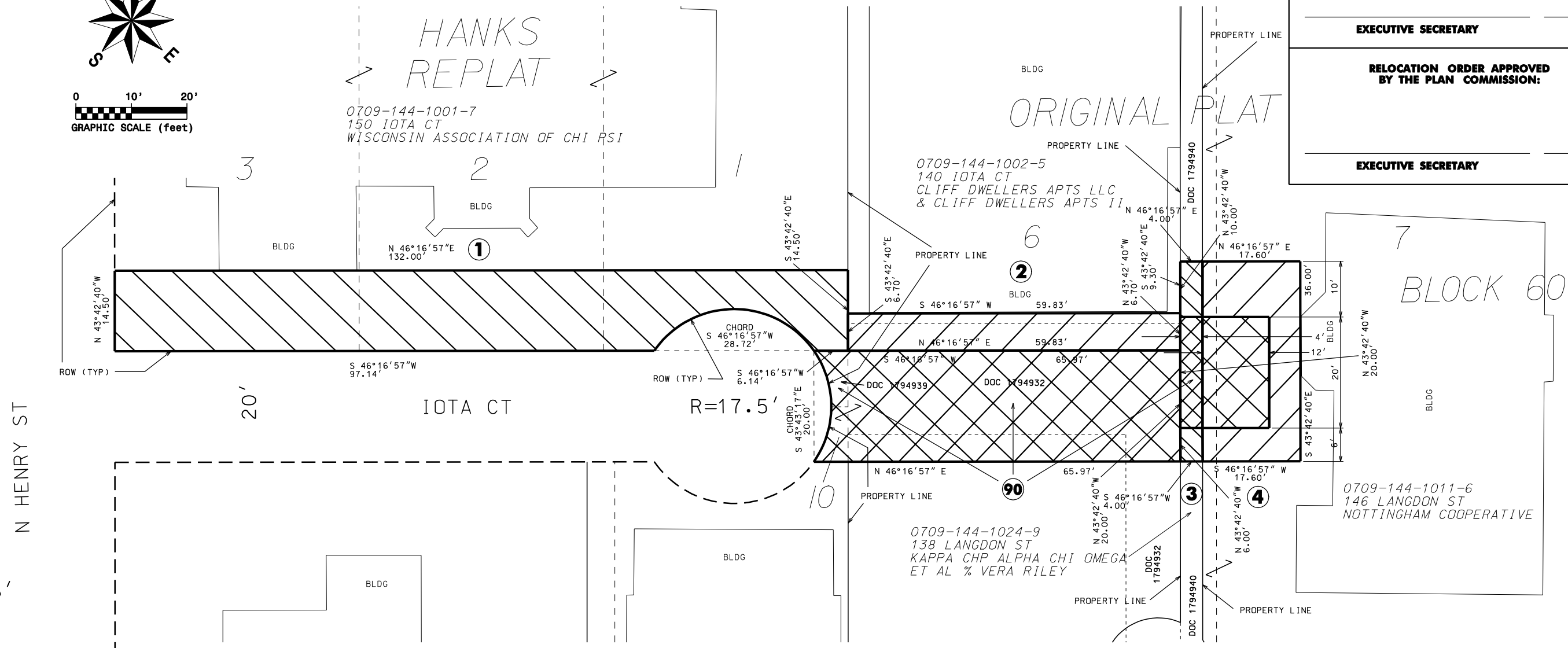
EXECUTIVE SECRETARY

DATE

RELOCATION ORDER APPROVED
BY THE PLAN COMMISSION:

EXECUTIVE SECRETARY

DATE



SCHEDULE OF INTERESTS REQUIRED

PARCEL #	OWNER NAME	PLE AREA REQUIRED	TLE AREA REQUIRED	CONSENT TO OCCUPY
①	WISCONSIN ASSOC OF CHI PSI		1762.9 SQ FT 0.040 ACRES	
②	CLIFF DWELLERS APTS, LLC	1276.7 SQ FT 0.029 ACRES	400.8 SQ FT 0.009 ACRES	
③	KAPPA CHP ALPHA CHI OMEGA	80.0 SQ FT 0.002 ACRES	64.0 SQ FT 0.001 ACRES	
④	NOTTINGHAM COOP	240.0 SQ FT 0.005 ACRES	393.6 SQ FT 0.009 ACRES	
⑨0	MADISON GAS & ELECTRIC	EXISTING DOCS 1794932, 1794939 & 1794940		1427.9 SQ FT 0.033 ACRES

REVISIONS

**CITY OF MADISON
RELOCATION ORDER**

"PLAT OF LAND INTERESTS REQUIRED FOR THE CONSTRUCTION AND MAINTENANCE OF IMPROVEMENTS FOR PUBLIC SANITARY SEWER", BEING ALL OF LOT 10 & PARTS OF LOTS 1-3, HANKS REPLAT, & PARTS OF LOTS 6-7, BLOCK 60, ORIGINAL PLAT, LOCATED IN THE SOUTHEAST 1/4 OF SECTION 14, TOWN 7 NORTH, RANGE 9 EAST, CITY OF MADISON, DANE COUNTY, WISCONSIN.

CITY ENGINEERING DIVISION
PROJECT NO. 53W1365
REAL ESTATE PROJECT NOS. 10052-10056

19 OCT, 2012 djs

PLOT SCALE: PLOT NAME: REV. DATE: ORIGINATOR: