

## City of Madison Splash Park Design Considerations

Site Selection	
Recirculating System	<p>Requires restroom within 300' from nearest rim of water attraction</p> <p>Water Service</p> <p>Requires Department of Safety and Professional Services approval</p> <p>Requires "rinse off" shower</p>
Non-recirculating System	<p>Discharge to both sanitary and storm sewer (Department of Health requires that the splash park discharge to the sanitary sewer when in use. Storm utility requires that no rainwater enter the sanitary sewer).</p> <p>Cannot discharge to storm sewers that go to certain bioinfiltration ponds, site selection will have to coordinate with Engineering and DNR for discharge permit.</p> <p>Requires Department of Safety and Professional Services approval for anything greater than 50,000 gallons per day.</p> <p>Requires restroom building within 300 ft from nearest rim of water attraction for anything greater than 50,000 gallons per day.</p> <p>Requires outdoor "rinse off" shower for anything greater than 50,000 gallons per day.</p>
Staffing	<p>Attendant needed on-site if spray park is not fenced. Mechanical systems for each facility will add to the number of facilities Park Operations staff have to start-up and winterize each year.</p>

### **Existing Splash Parks:**

- Cypress Splash Park, Madison, WI
- Lakeview Park Splash Park, Middleton, WI
- Future Splash Park at McKee Farms Park, Fitchburg, WI (currently fundraising)

### **Potential Future City of Madison Locations:**

#### **East Side**

- Reindahl Park

#### **West Side**

- Elver Park

#### **Other potential locations:**

- Olbrich Park
- Warner Park
- Vilas Park
- Garner Park
- Rennebohm Park

## Milwaukee County Clarke Square Splash Park

Completed: 1998

Size: 2,000 square feet

**Approximate Splash Pad Cost\*** **\$275,000**

**Additional Site Costs\*\*** **\$0**

**Design and Project Management Costs:** **\$55,000**  
(Estimate 20% total construction costs)

**TOTAL COST:** **\$330,000**

### Design:

- 10 spray features
- Poured in Place Rubber
- Recirculating System



\* Splash pad cost is site redevelopment of the splash pad area and includes removals, storm drainage, plumbing, concrete and asphalt walkways, retaining walls, benches, tables, bike racks, fencing, light poles, trees, shrubs, plants, sod, seed, etc.

\*\* Additional site costs excludes new building, but can include restroom remodeling, building work, parking lot construction, and site lighting.

## Milwaukee County Gordon Splash Park

Completed: 2001

Size: 3,848 square feet

**Approximate Splash Pad Cost\*** **\$400,000**

**Additional Site Costs\*\*** **\$170,000**

**Design and Project Management Costs:** **\$114,000**  
(Estimate 20% total construction costs)

**TOTAL COST:** **\$684,000**

### Design:

- 13 spray features
- Poured in Place Rubber
- Recirculating System



\* Splash pad cost is site redevelopment of the splash pad area and includes removals, storm drainage, plumbing, concrete and asphalt walkways, retaining walls, benches, tables, bike racks, fencing, light poles, trees, shrubs, plants, sod, seed, etc.

\*\* Additional site costs excludes new building, but can include restroom remodeling, building work, parking lot construction, and site lighting.

## Milwaukee County Dineen Splash Park

**Completed: 2008**

**Size: 4,006 square feet**

**Approximate Splash Pad Cost \$480,000**

**Additional Site Costs\*\* \$320,000**

**Design and Project Management Costs: \$160,000**

**TOTAL COST: \$960,000**

### **Design:**

- 18 spray features
- Poured in Place Rubber
- Recirculating System



\* Splash pad cost is site redevelopment of the splash pad area and includes removals, storm drainage, plumbing, concrete and asphalt walkways, retaining walls, benches, tables, bike racks, fencing, light poles, trees, shrubs, plants, sod, seed, etc.

\*\* Additional site costs excludes new building, but includes restroom remodeling, building work, and site lighting.

## Milwaukee County Madison Splash Park

Completed: 2009

Size: 2,750 square feet

Approximate Splash Pad Cost \$234,000

Additional Site Costs\*\* \$0

Design and Project Management Costs: \$46,800

TOTAL COST: \$280,800

### Design:

- 39 spray features
- Poured in Place Rubber
- Flow through system



\* Splash pad cost is site redevelopment of the splash pad area and includes removals, storm drainage, plumbing, concrete and asphalt walkways, retaining walls, benches, tables, bike racks, fencing, light poles, trees, shrubs, plants, sod, seed, etc.

\*\* Additional site costs excludes new building, but can include restroom remodeling, building work, parking lot construction, and site lighting.



## Milwaukee County Washington Splash Park

**Completed: 2009**

**Size: 2,560 square feet**

**Approximate Splash Pad Cost \$298,000**

**Additional Site Costs\*\* \$11,000**

**Design and Project Management Costs: \$59,600**

**TOTAL COST: \$368,600**

### **Design:**

- 28 spray features
- Poured in Place Rubber
- Flow through system



\* Splash pad cost is site redevelopment of the splash pad area and includes removals, storm drainage, plumbing, concrete and asphalt walkways, retaining walls, benches, tables, bike racks, fencing, light poles, trees, shrubs, plants, sod, seed, etc.

\*\* Additional site costs excludes new building, but can include restroom remodeling, building work, parking lot construction, and site lighting.

## **Cypress Splash Park Madison, WI**

**Contract Awarded in 2008**

**Size: ~2000 square feet**

**Construction Cost: ~\$400,000 (excludes design and project management fees)**

### **Design:**

- **10 spray features**
- **Flow through system**
- **No restroom building**
- **192 gallons/minute (~11,000 gallons per day)**
- **Discharge flows to sanitary sewer when in use (controlled by attendant) and to storm sewer when not in use**





## **Lakeview Park Splash Pad Middleton, WI**

**Constructed in 2008**

**Size: 5000 square feet**

**Construction Cost: \$365,000 (excludes restroom building, shade shelter, design fees)**

### **Design:**

- 26 spray features
- 160 gallons/minute
- Concrete surfacing
- Flow Through System, discharges to Lakeview Detention Pond then Lake Mendota





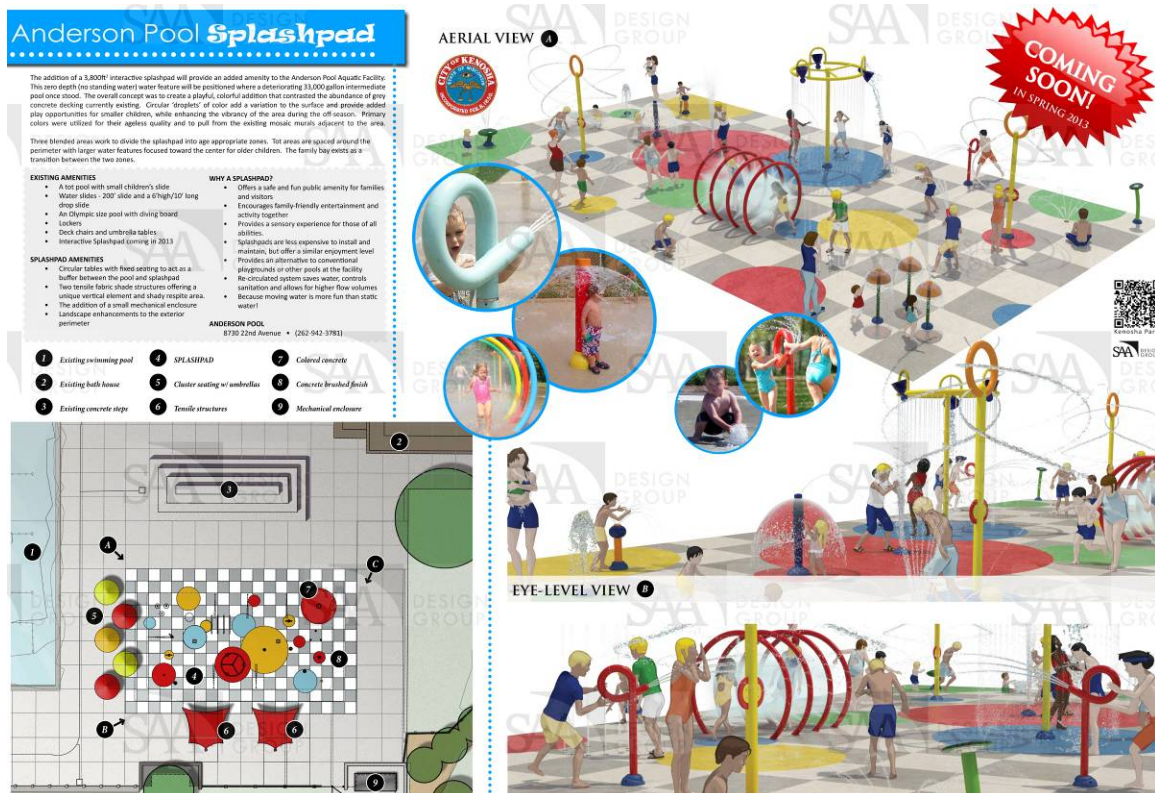
## Anderson Pool Splash Pad (Not yet constructed) Kenosha, WI

**Size: 3500 square feet**

**Construction Cost: \$375,000 (excludes building and mechanical storage; design fees)**

### Design:

- 22 spray features
- 240 gallons/minute
- Concrete surfacing
- Within existing pool complex.
- Recirculating System



**Goodrich Park Splash Pad (Not yet constructed)**  
**Milton, WI**

**Size: 3000 square feet**

**Construction Cost: \$500,000** (excludes restroom building & design fees, includes mechanical storage)

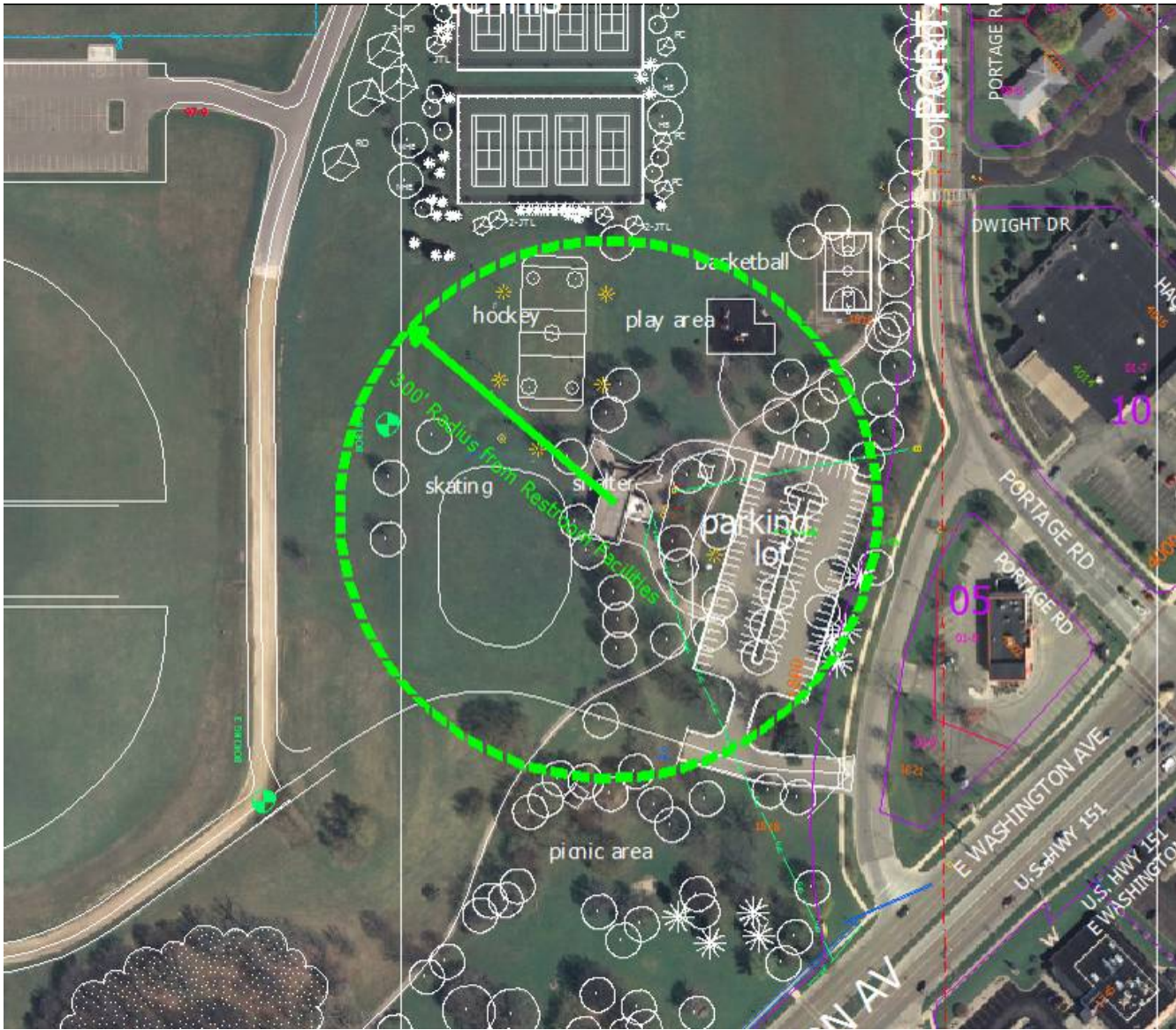
**Design:**

- 21 spray features
- 280 gallons/minute
- Concrete surfacing
- Existing restroom building already at Goodrich Park
- Recirculating System
- Large water tower spray feature ~\$20,000





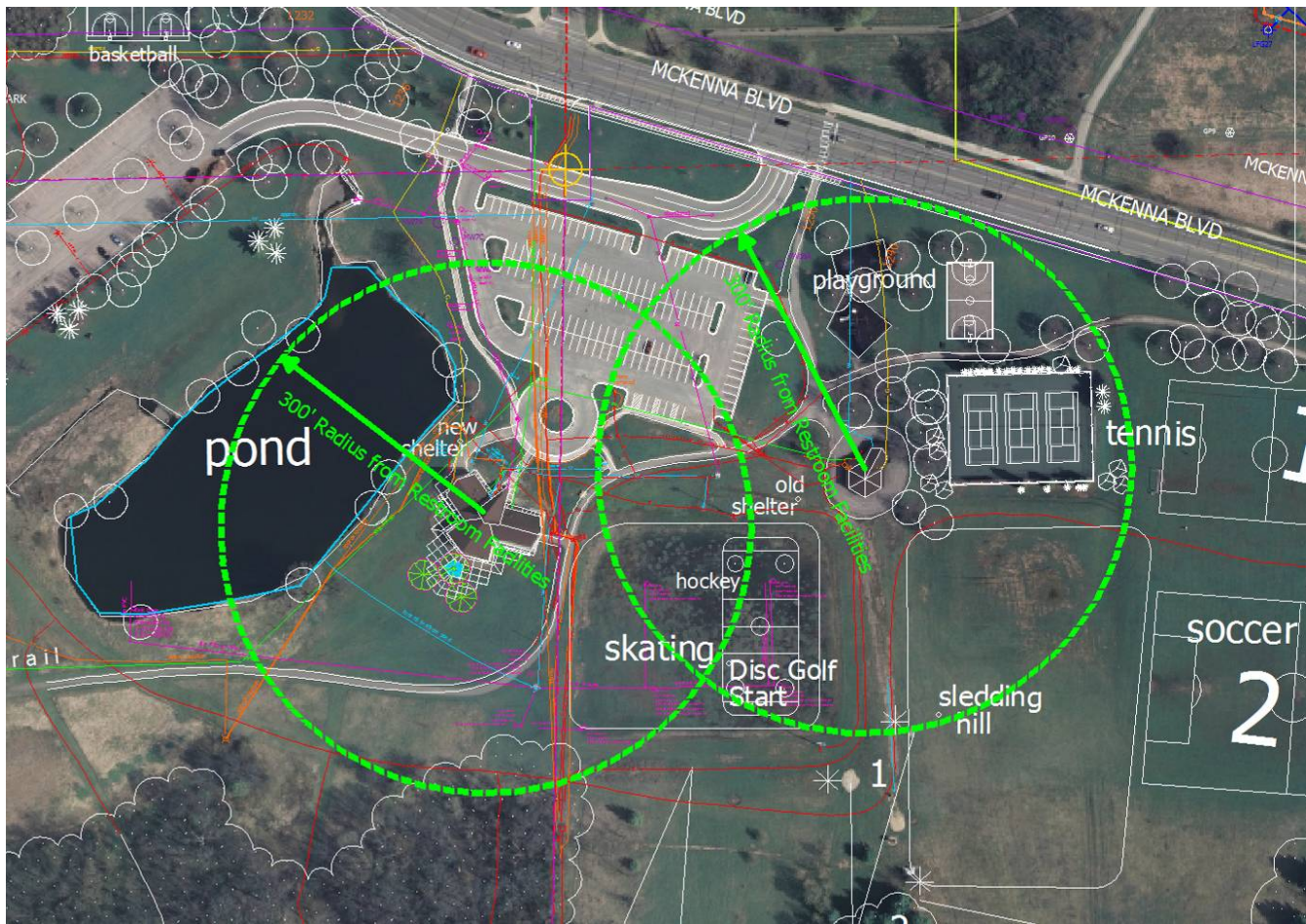
**City of Madison Potential Locations  
East**



**Reindahl Park**



**City of Madison Potential Locations  
West**



**Elver Park**



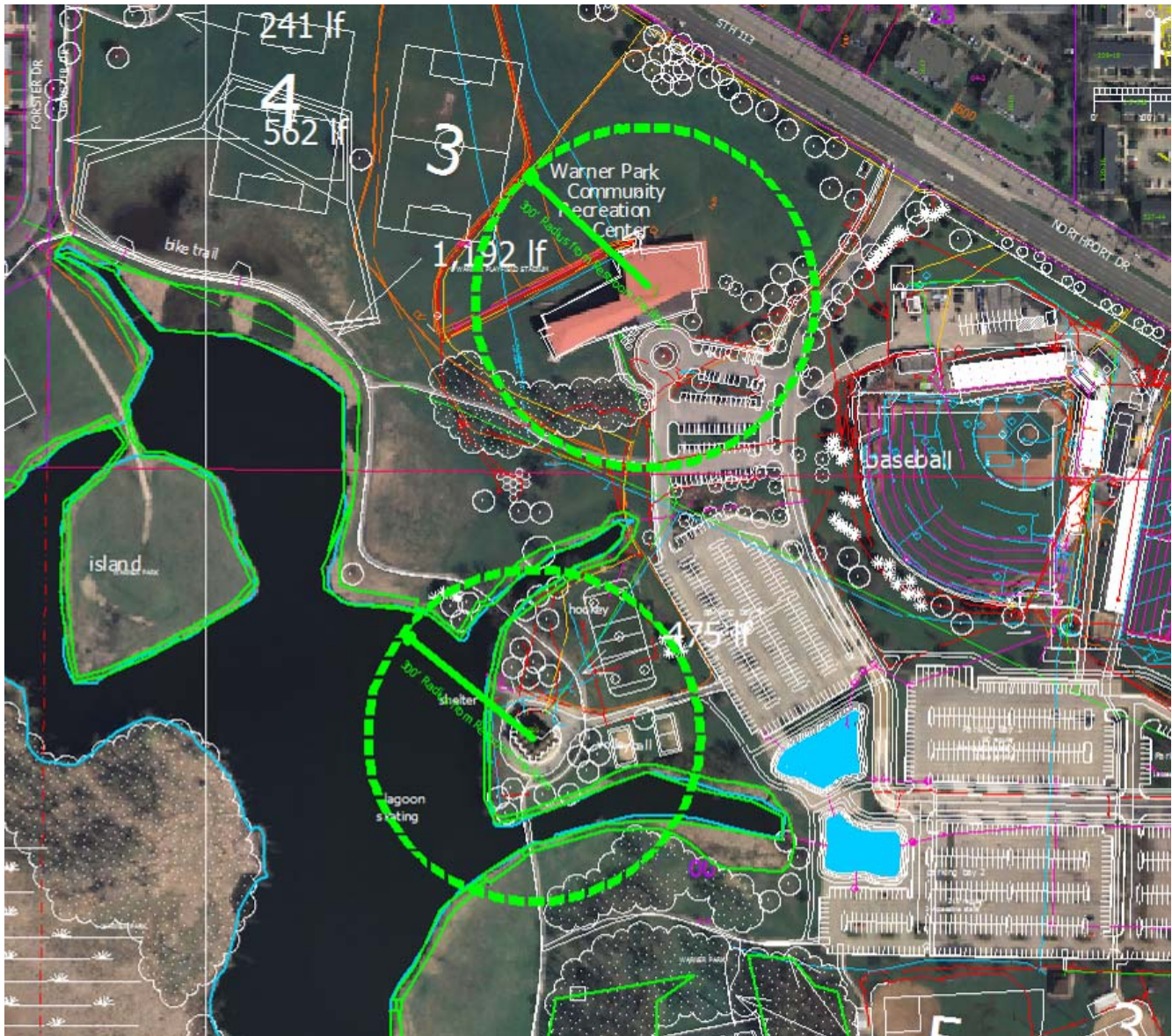
## City of Madison Potential Locations



## Olbrich Park



## City of Madison Potential Locations



### Warner Park

- Potential indoor pool location



## City of Madison Potential Locations



### Vilas Park

- Considered but not pursued
- Potential conflicts with existing uses



## City of Madison Potential Locations

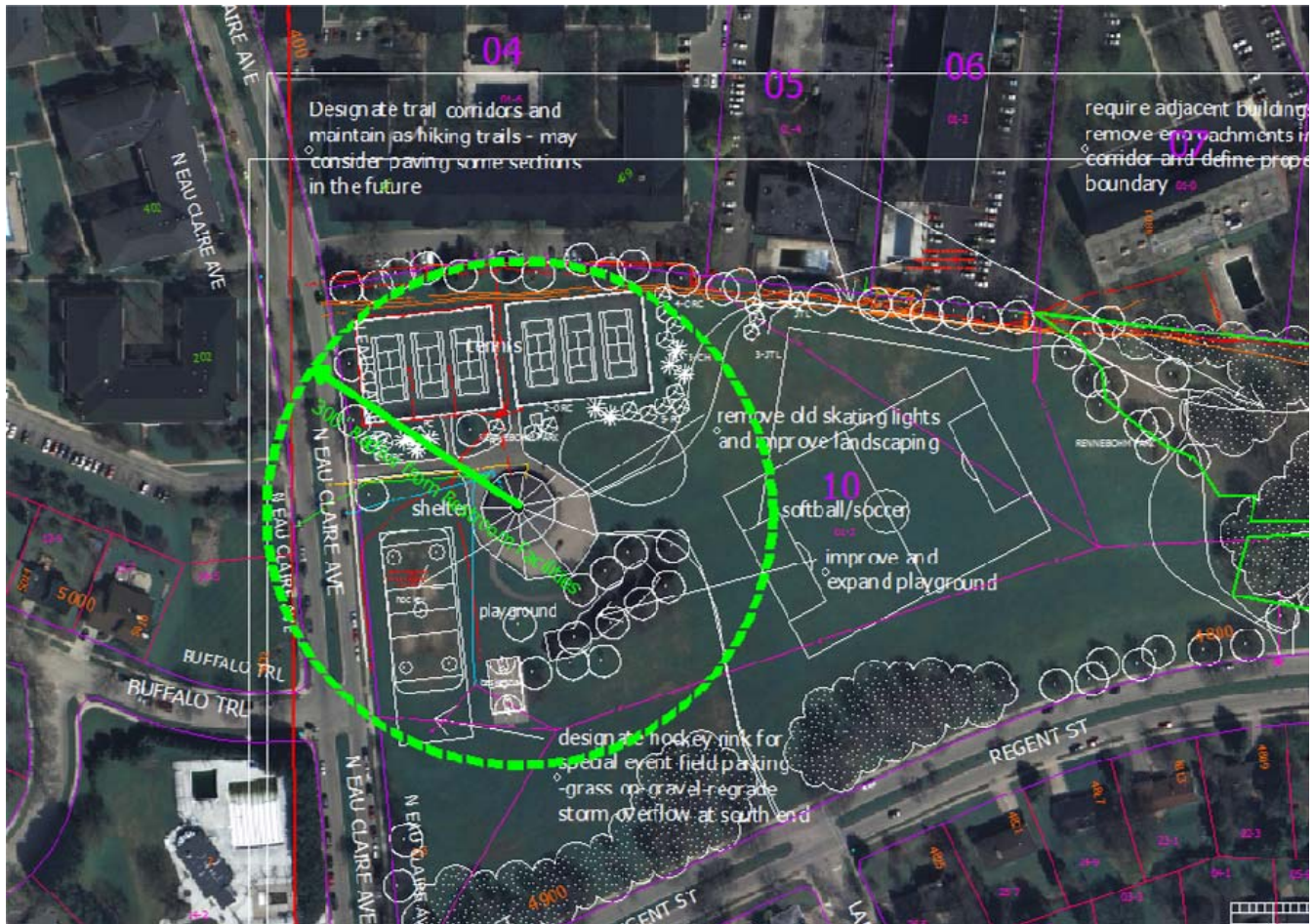


### Garner Park

- Considered but not pursued
- Several private pools located in close proximity to this park
- Potential conflicts with existing uses



## City of Madison Potential Locations



### Rennebohm Park

- Considered but not pursued
- Several private pools located in close proximity to this park
- Potential conflicts with existing uses