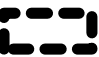



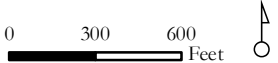
Map 1: Amendment Area

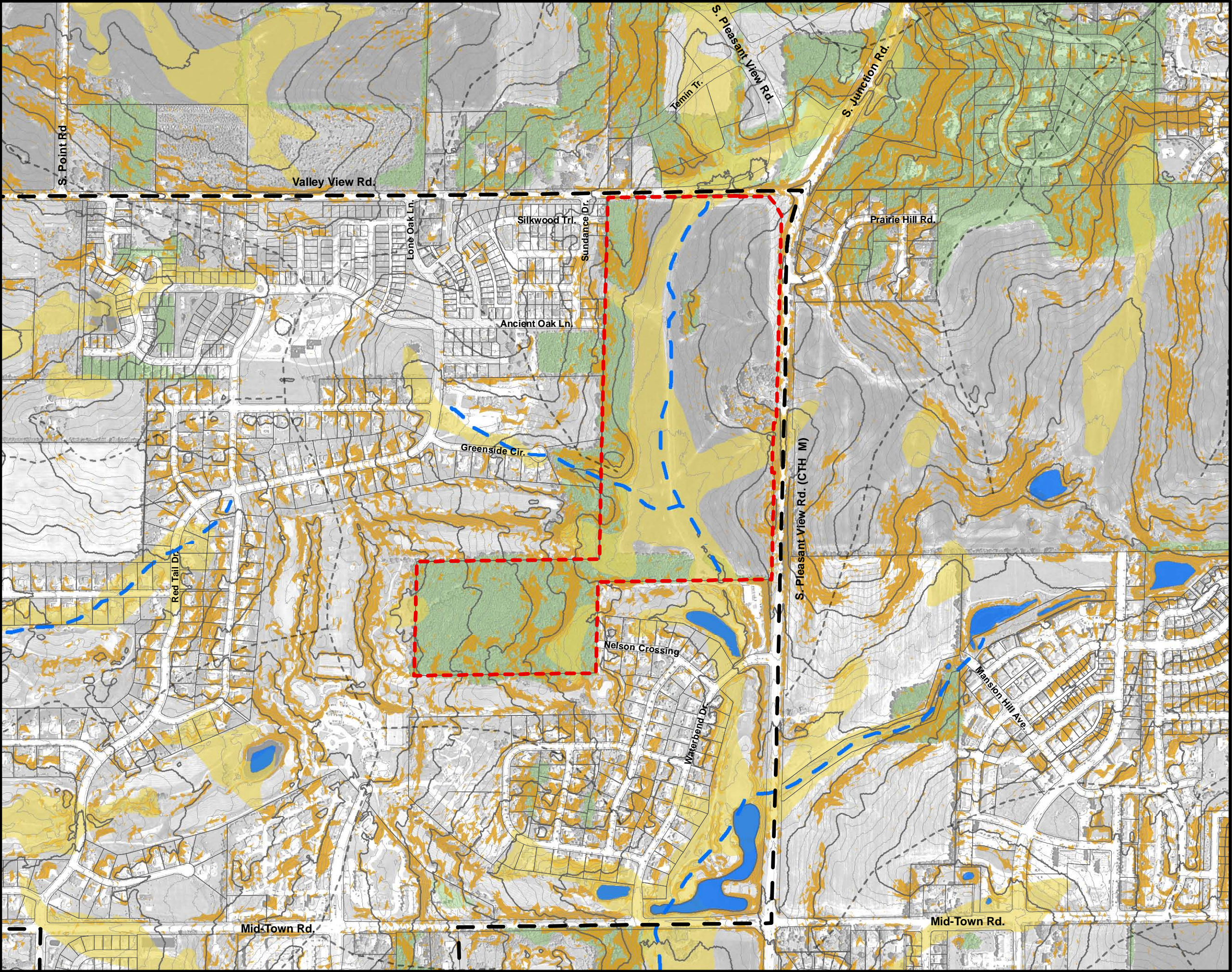
Amendment to the Mid-Town
Neighborhood Development Plan
August 2011

City of Madison Planning Division

-  Mid-Town NDP Boundary
-  Amendment Area

DRAFT





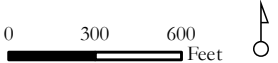
Map 3: Natural Features

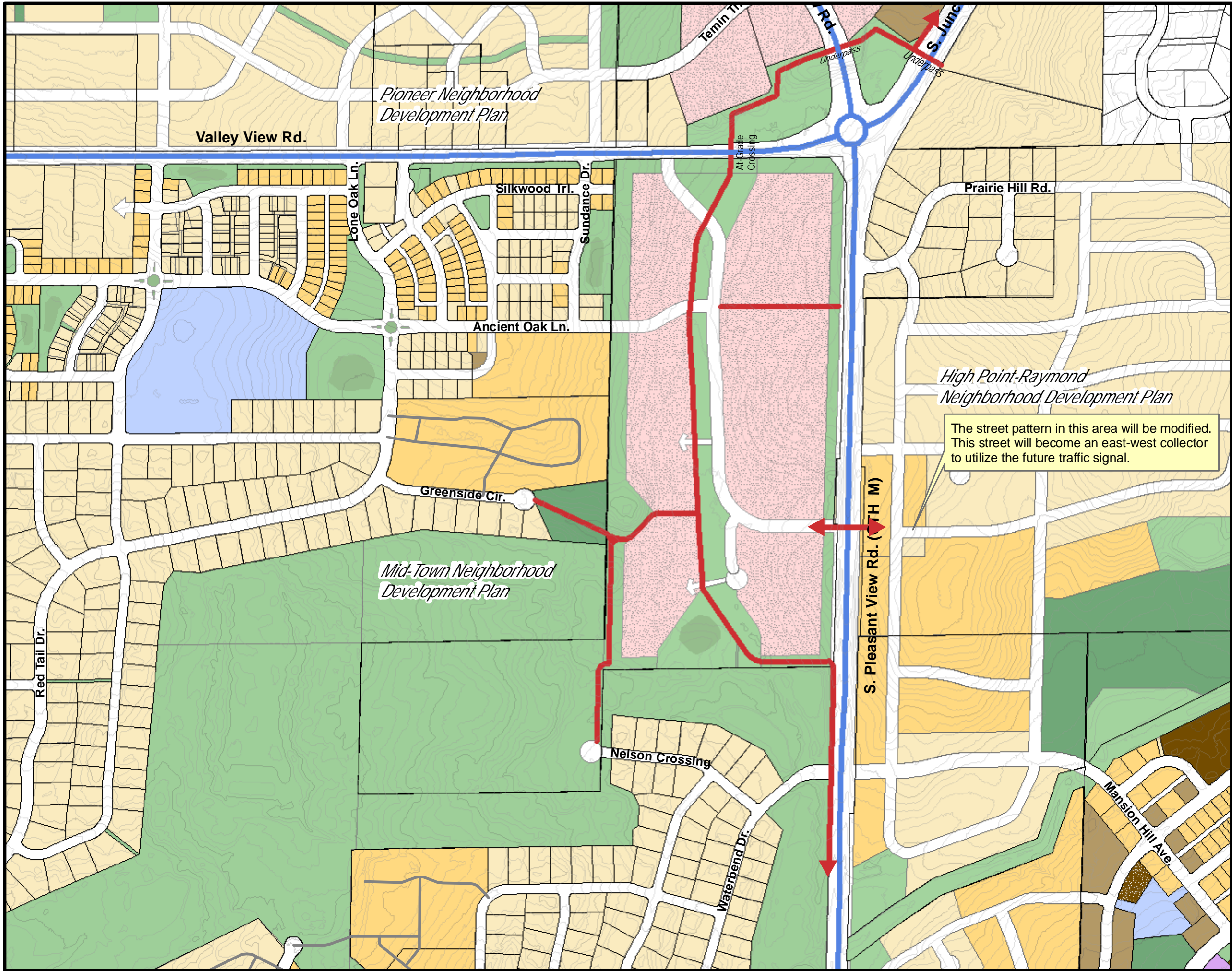
Amendment to the Mid-Town
Neighborhood Development Plan
August 2011

City of Madison Planning Division

- Mid-Town NDP Boundary
- Amendment Area
- Minor Ridgeline
- 4 Foot Contour
- 20' Interval
- Surface Water
- Intermittent Stream
- Hydric Soils
- Soils wth Hydric Inclusions
- Slopes 12% or Greater
- Woodland

DRAFT





Pedestrian-Bicycle Facilities

Amendment to the Mid-Town
Neighborhood Development Plan
_____, 2011

City of Madison Planning Division

- Bike Lane
- Pedestrian/Bicycle Path

DRAFT
Revised Nov. 4, 2011