

File: s:\2011\114627.dwg; Public Improvements.dwg; Layout: C100 - G:EC User: Jken PlotDate: Jul 13, 2011 - 8:29am Xref's:

**LEGEND (PROPOSED)**

	PROPERTY LINE
	UNDERGROUND STORM WATER MANAGEMENT
	STORM SEWER
	SANITARY SEWER
	WATER MAIN
	CONCRETE PAVEMENT

**JSD Professional Services, Inc.**  
 • Engineers • Surveyors • Planners

"BUILDING RELATIONSHIPS WITH A COMMITMENT TO CLIENT SATISFACTION THROUGH TRUST, QUALITY AND EXPERIENCE"

- CIVIL ENGINEERING
- SURVEYING & MAPPING
- CONSTRUCTION SERVICES
- WATER RESOURCES
- PLANNING & DEVELOPMENT
- TRANSPORTATION ENGINEERING
- STRUCTURAL ENGINEERING
- LANDSCAPE ARCHITECTURE

MADISON REGIONAL OFFICE  
 161 HORIZON DRIVE, SUITE 101  
 VERONA, WISCONSIN 53593  
 608.848.5060 PHONE | 608.848.2255 FAX

MADISON | MILWAUKEE  
 KENOSHA | APPLETON  
 www.jsdinc.com

SERVICES PROVIDED TO:  
**GHIDORZI COMPANIES**

2100 STEWART AVE, SUITE 300  
 WAUSAU, WI 54401

PROJECT:  
**WINGRA CREEK**

PROJECT LOCATION:  
 CITY OF MADISON  
 DANE COUNTY, WI

JSD PROJECT NO.: 11-4627

SEAL/SIGNATURE:

ALTHOUGH EVERY EFFORT HAS BEEN MADE IN PREPARING THESE PLANS AND CHECKING THEM FOR ACCURACY, THE CONTRACTOR AND SUBCONTRACTORS MUST CHECK ALL DETAIL AND DIMENSIONS OF THEIR TRADE AND BE RESPONSIBLE FOR THE SAME.

DESIGN: DOS 6-20-2011  
 DRAWN: DOS 6-20-2011  
 APPROVED: WPW

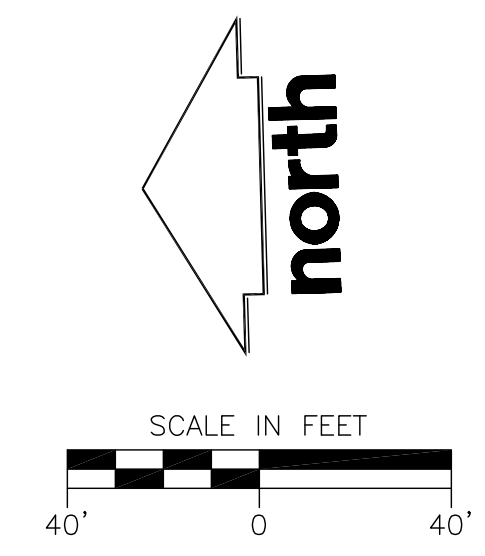
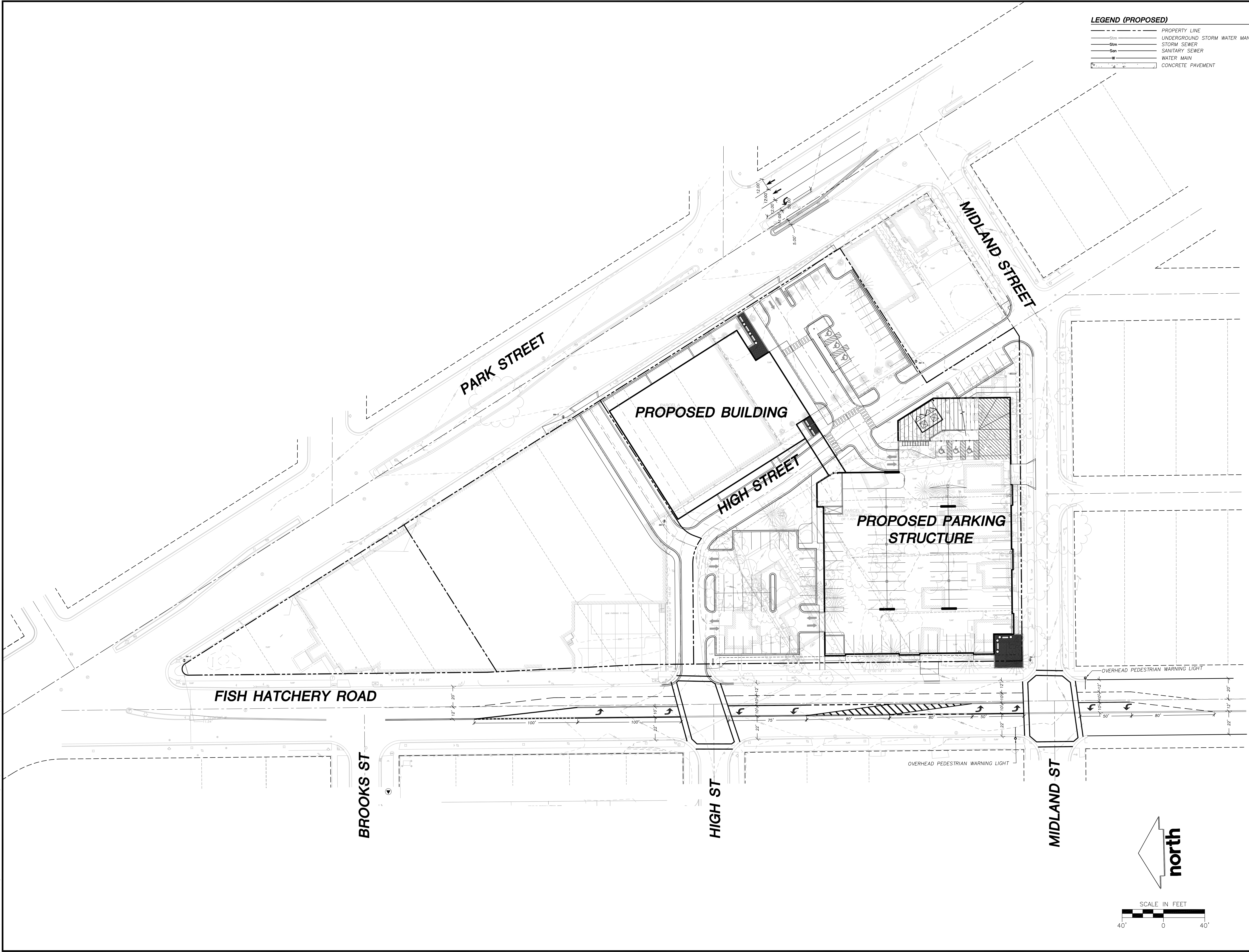
PLAN MODIFICATIONS:	DATE:

**DIGGERS HOTLINE**

Toll Free (800) 242-8511  
 Milwaukee Area (414) 259-1181  
 Hearing Impaired TDD (800) 542-2289  
 www.DiggersHotline.com

SHEET TITLE:  
**PUBLIC IMPROVMENT GEOMETRIC LAYOUT**

SHEET NUMBER:  
**C100**



THESE PLANS AND DESIGNS ARE COPYRIGHT PROTECTED AND MAY NOT BE USED IN WHOLE OR IN PART WITHOUT THE WRITTEN CONSENT OF JSD PROFESSIONAL SERVICES, INC.