

**APPLICATION FOR
URBAN DESIGN COMMISSION
REVIEW AND APPROVAL**

AGENDA ITEM # _____
Project # _____
Legistar # 21043

DATE SUBMITTED: May 4, 2011

UDC MEETING DATE: May 11, 2011

Action Requested

- ☐ Informational Presentation
☐ Initial Approval and/or Recommendation
☒ Final Approval and/or Recommendation

PLEASE PRINT!

PROJECT ADDRESS: 3550 Anderson Street, Madison Wisconsin 54704

ALDERMANIC DISTRICT: District 17

OWNER/DEVELOPER (Partners and/or Principals) Madison Area Technical College

3550 Anderson Street

Madison, Wisconsin 54704

ARCHITECT/DESIGNER/OR AGENT: Zimmerman Architectural Studios

2122 West Mt. Vernon Avenue

Milwaukee, Wisconsin 53233

CONTACT PERSON: Doug Barnes

Address: 2122 West Mt. Vernon Avenue

Milwaukee, Wisconsin 53233

Phone: 414.918.1461

Fax: 414.302.3738

E-mail address: Doug.Barnes@zastudios.com

PLEASE PRINT!

TYPE OF PROJECT:

(See Section A for:)

- ☐ Planned Unit Development (PUD)
☐ General Development Plan (GDP)
☐ Specific Implementation Plan (SIP)
☐ Planned Community Development (PCD)
☐ General Development Plan (GDP)
☐ Specific Implementation Plan (SIP)
☐ Planned Residential Development (PRD)
☐ New Construction or Exterior Remodeling in an Urban Design District * (A public hearing is required as well as a fee)
☒ School, Public Building or Space (Fee may be required)
☐ New Construction or Addition to or Remodeling of a Retail, Hotel or Motel Building Exceeding 40,000 Sq. Ft.
☐ Planned Commercial Site

(See Section B for:)

- ☐ New Construction or Exterior Remodeling in C4 District (Fee required)

(See Section C for:)

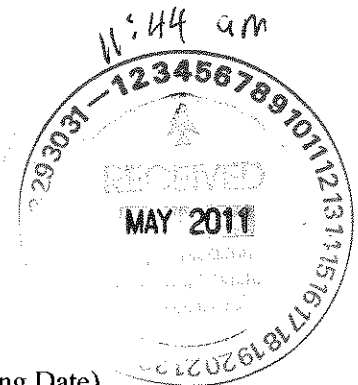
- ☐ R.P.S.M. Parking Variance (Fee required)

(See Section D for:)

- ☐ Comprehensive Design Review* (Fee required)
☐ Street Graphics Variance* (Fee required)
☐ Other _____

***Public Hearing Required (Submission Deadline 3 Weeks in Advance of Meeting Date)**

Where fees are required (as noted above) they apply with the first submittal for either initial or final approval of a project.



Project Title

TRUAX - HEALTH
EDUCATION BUILDING

3350 Anderson Street
Madison, Wisconsin

Issued For: Review

Issued For: May 4, 2011

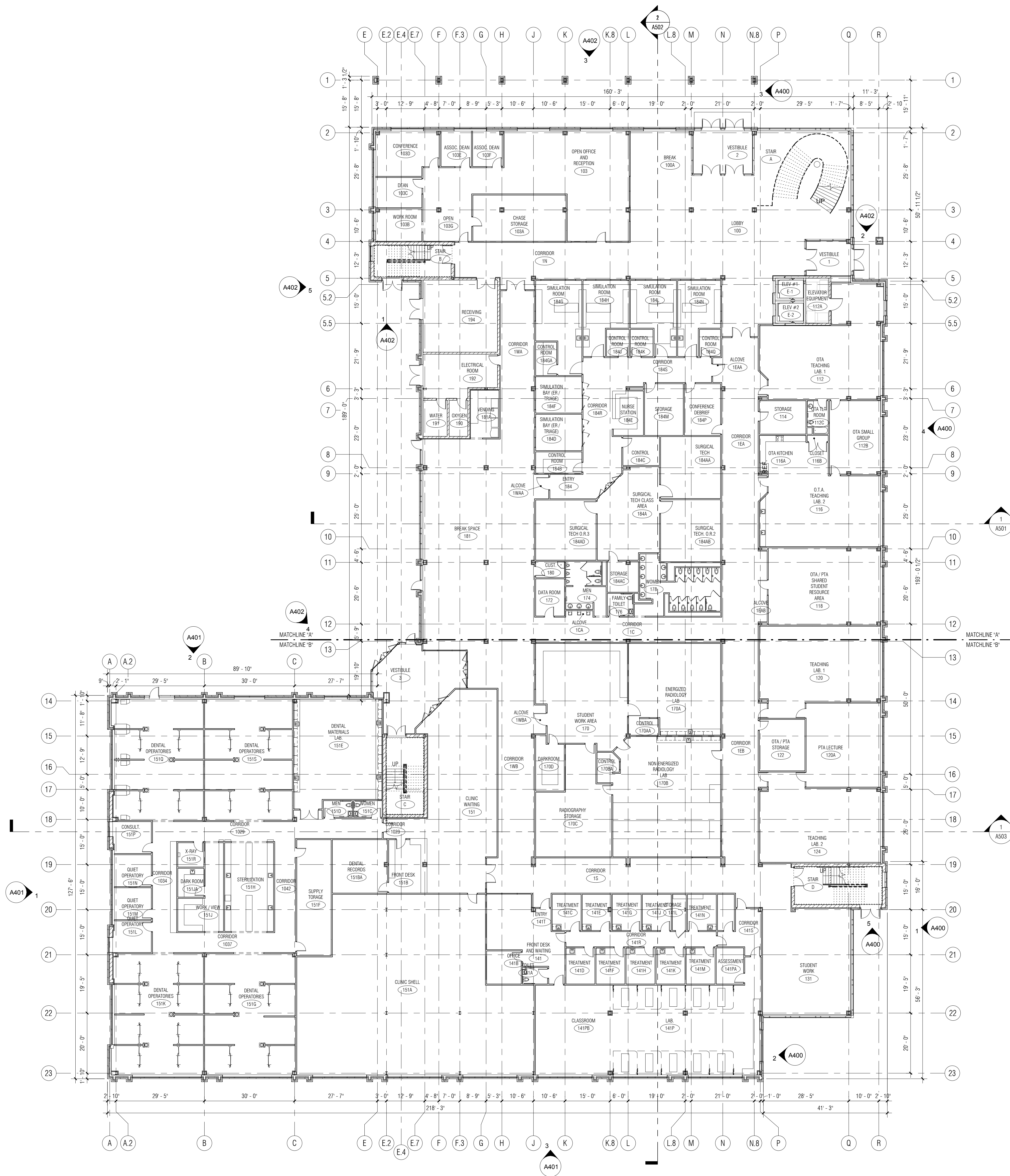
ZAS Project No. 100048.00

Owner Project No. R11001

Bid Pkg No. B10-043

Revision Date

zimmerman
ARCHITECTURAL STUDIOS
1000 North 10th Street, Madison, WI 53705-1000
TEL: 608.261.1111 FAX: 608.261.1112
WWW.ZIMMERMAN-ARCH.COM



1 First Floor Plan - Overall
1/16" = 1'-0" EL: 100'-0" = 855.5'

DRAWING

Sheet Number

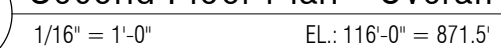
A201

OVERALL FIRST FLOOR
PLAN

© ZIMMERMAN ARCHITECTURAL STUDIOS, INC.



© ZIMMERMAN ARCHITECTURAL STUDIOS, INC.



© ZIMMERMAN ARCHITECTURAL STUDIOS, INC.



Health Education Building

Views from northwest and west

Showing redesigned clinic entry.
Metal and glass façade wraps to the ground, as at the southeast and northeast corners.
Some trees omitted for clarity..





Enlarged view showing redesigned clinic entry.
Metal and glass façade wraps to the ground, as at the southeast and northeast corners.



Essentially unchanged. Some additional landscape is shown, but see SAA drawings for accurate portrayal.
White membrane roof to be bid as an alternate.



Mostly unchanged. Some additional landscape is shown, but see SAA drawings for accurate portrayal.
White membrane roof to be bid as an alternate.
Image shows somewhat revised detail of northeast corner. Other options were studied.



Mostly unchanged. Some additional landscape is shown, but see SAA drawings for accurate portrayal. Study of alternate detail at northeast corner (perpendicular cornice). Other options were studied and rejected.

Health Education Building

Wide-Angle eye level view from Northeast



Studies of alternate details at northeast corner (perpendicular brise-soliel or cornice). Other options were studied and rejected.



Health Education Building

Wide-Angle eye level view from Northeast





Project Title

Truax
HEB/Additions

City of Madison,
Wisconsin

Issued For:	Approval
Issue Date:	05/04/2011
SAA Project No.	2434
MC Project No.	-
Bid Pkg No.	B11-025

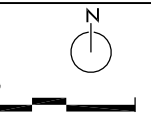
Revision	Date
----------	------

SAA DESIGN GROUP
SAA Design Group, Inc.
717 John Nolen Drive
Madison, WI 53713
Ph. 608.255.0800
Fax. 608.255.7750
www.saa-madison.com



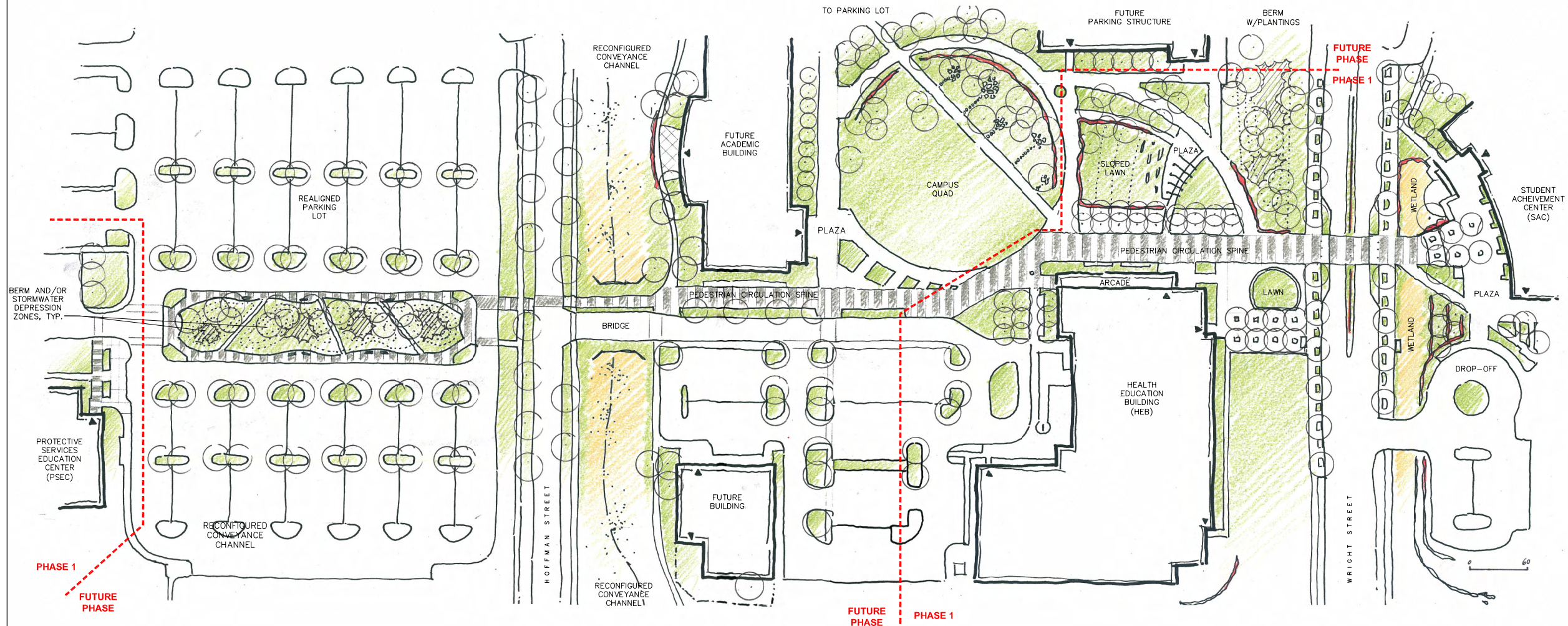
Conservation Design Forum
375 West First Street
Evanston, Illinois 60126
630.559.2000 Phone
630.559.2030 Fax
www.cdfinc.com

DRAWING
FUTURE QUAD AND
PEDESTRIAN
CIRCULATION
CORRIDOR

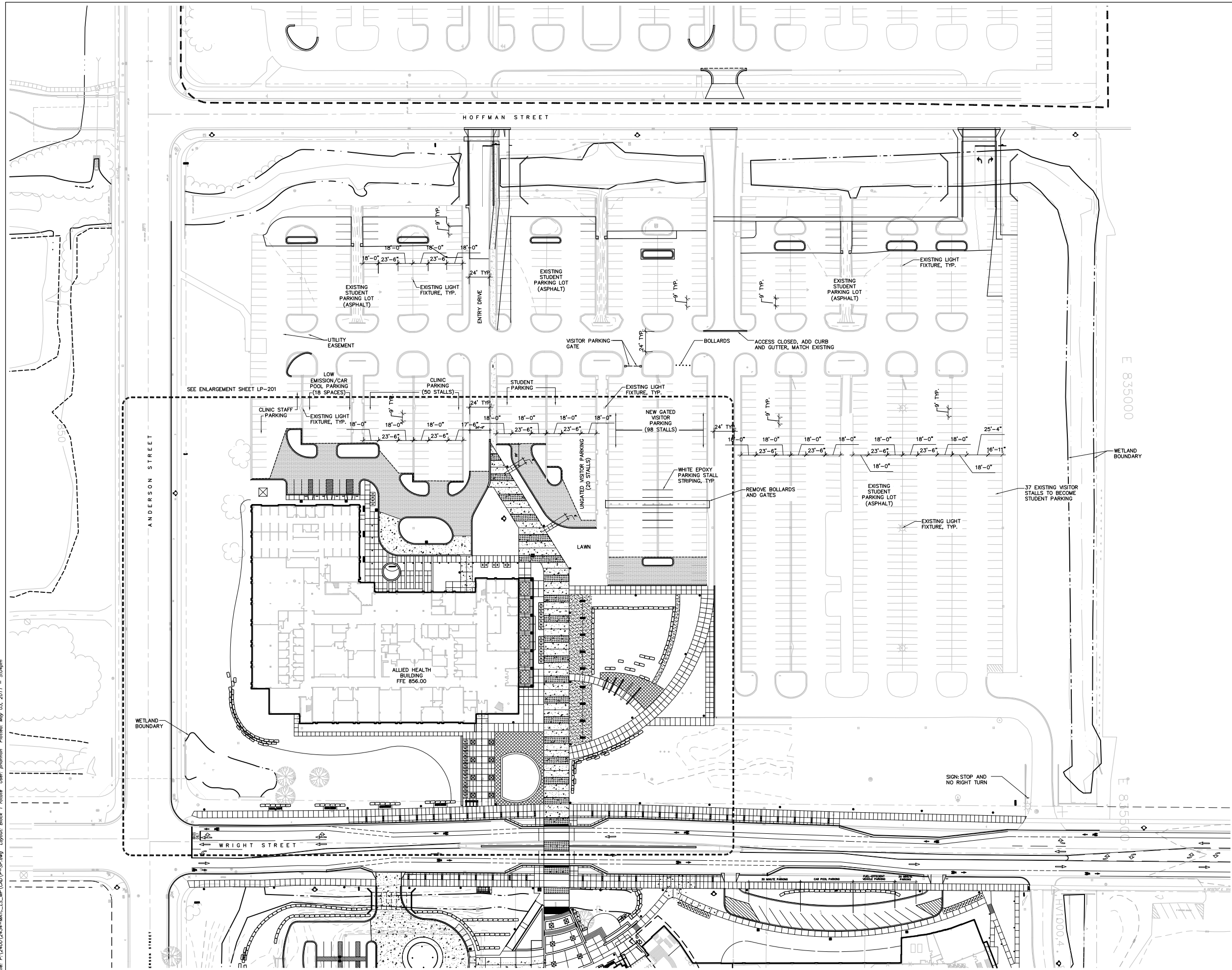


Sheet Number

LP-100



File: P:\2400\2434-MATC-US_MP\CAD\2-SP.dwg Layout: Black 1 rotate User: phamson Plotted: May 03, 2011 - 5:04pm



Project Title

Truax
HEB

City of Madison,
Wisconsin

Issued For:	Approval
Issue Date:	05/04/2011
SAA Project No.	2434
MC Project No.	-
Bid Pkg No.	B11-025

Revision	Date



Conservation Design Forum
375 West First Street
Eau Claire, Illinois 60126
630.559.2000 Phone
630.559.2030 Fax
www.cdfinc.com

DRAWING
SITE LAYOUT PLAN

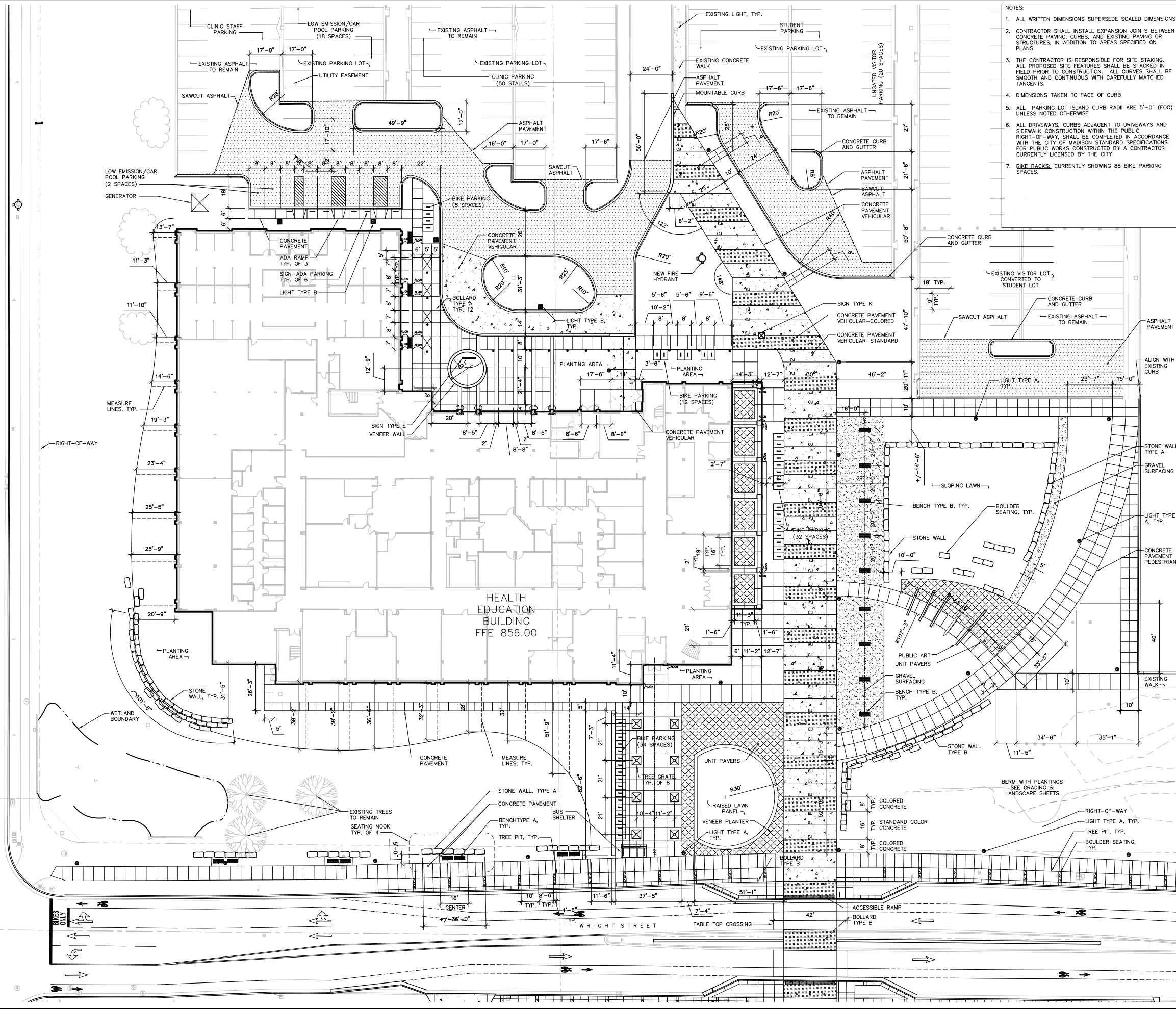


Sheet Number

LP-101

File: P:\2400\2434-MATC-US_MP\CAD\2-SP.dwg Layout: Black 1: Enlargement rotate User: phannon Plotted: May 03, 2011 5:05pm

ANDERSON STREET



- NOTES:
1. ALL WRITTEN DIMENSIONS SUPERSEDE SCALED DIMENSIONS
 2. CONTRACTOR SHALL INSTALL EXPANSION JOINTS BETWEEN CONCRETE PAVING, CURBS, AND EXISTING PAVING OR STRUCTURES, IN ADDITION TO AREAS SPECIFIED ON PLANS
 3. THE CONTRACTOR IS RESPONSIBLE FOR SITE STAKING. ALL PROPOSED SITE FEATURES SHALL BE STACKED IN FIELD PRIOR TO CONSTRUCTION. ALL CURVES SHALL BE SMOOTH AND CONTINUOUS WITH CAREFULLY MATCHED TANGENTS.
 4. DIMENSIONS TAKEN TO FACE OF CURB
 5. ALL PARKING LOT ISLAND CURB RADII ARE 5'-0" (FOC) UNLESS NOTED OTHERWISE
 6. ALL DRIVEWAYS, CURBS ADJACENT TO DRIVEWAYS AND SIDEWALK CONSTRUCTION WITHIN THE PUBLIC RIGHT-OF-WAY SHALL BE COMPLETED IN ACCORDANCE WITH THE CITY OF MADISON STANDARD SPECIFICATIONS FOR PUBLIC WORKS CONSTRUCTED BY A CONTRACTOR CURRENTLY LICENSED BY THE CITY
 7. BIKE RACKS: CURRENTLY SHOWING 88 BIKE PARKING SPACES.



Project Title

Truax
HEB

City of Madison,
Wisconsin

Issued For: Approval

Issue Date: 05/04/2011

SAA Project No. 2434

MC Project No. -

Bid Pkg No. B11-025

Revision Date



Conservation Design Form
375 West First Street
Einhorn, Illinois 60126
630.559.2000 Phone
630.559.2030 Fax
www.cdfmc.com

DRAWING

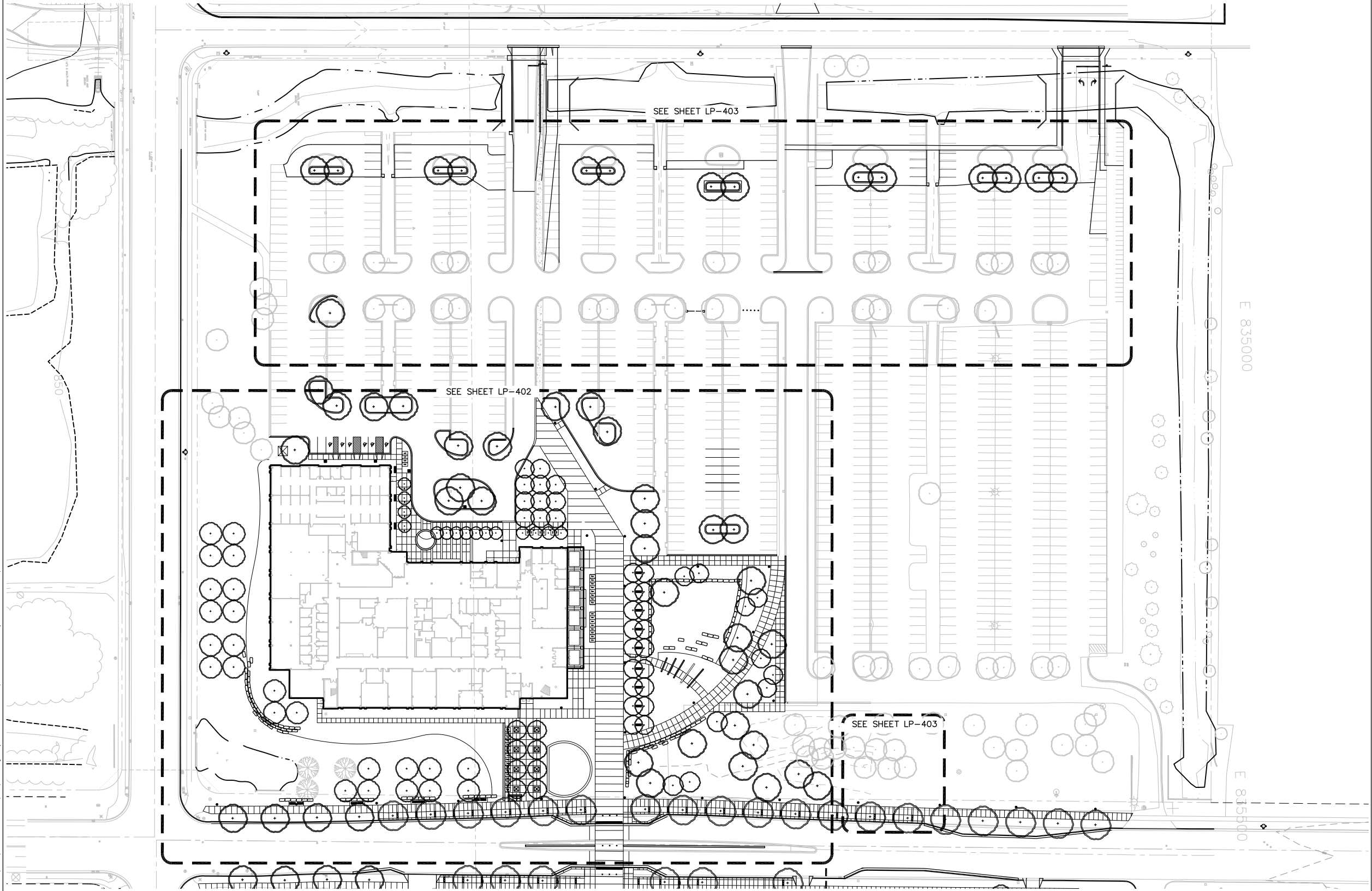
SITE LAYOUT PLAN
ENLARGEMENT



Sheet Number

LP-201

File: P:\2400\2434-MATC-US_MP_CAD\LP-US.dwg Layout: LP-401 User: phanman Plotted: May 03, 2011 - 5:07pm



LANDSCAPE POINTS – MODIFIED EXISTING PARKING LOT				
NUMBER OF TREES REQUIRED:		TABULATION OF POINTS PROVIDED:		
NUMBER OF PARKING STALLS	894	EXISTING CANPY TREES	0 pts	40
LOADING AREAS	1	CANOPY TREES	35 pts	39
CANOPY TREES REQUIRED	38	EXISTING CANPY TREES	35 pts	25
		ORNAMENTAL TREES	15 pts	25
NUMBER OF LANDSCAPE POINTS REQUIRED:				
POINTS REQUIRED PER PARKING STALLS	2361	TOTAL POINTS		2615 pts
POINTS REQUIRED PER LOADING AREA	75			
TOTAL POINTS REQUIRED		2436		



Project Title

Truax
HEB

City of Madison,
Wisconsin

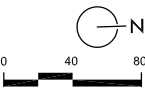
Issued For:	Approval
Issue Date:	05/04/2011
SAA Project No.	2434
MC Project No.	-
Bid Pkg No.	B11-025

Revision	Date



Conservation Design Forum
375 West First Street
Erlbaum, Illinois 60126
630.559.2000 Phone
630.559.2030 Fax
www.cdfinc.com

DRAWING
LANDSCAPE KEY PLAN



Sheet Number

LP-401

Project Title _____

Truax
HEB

City of Madison,
Wisconsin

Issued For:	Approval
-------------	----------

Issue Date: 05/04/2011

SAA Project No. 2434

MC Project No. -

Bid Pkg No. **B11-025**

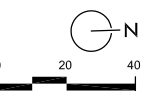
Revision _____ Date _____

SAA DESIGN GROUP
SAA Design Group, Inc.
717 John Nolen Drive
Madison, WI 53713
Ph. 608.255.0800
Fx. 608.255.7750
www.saa-madison.com



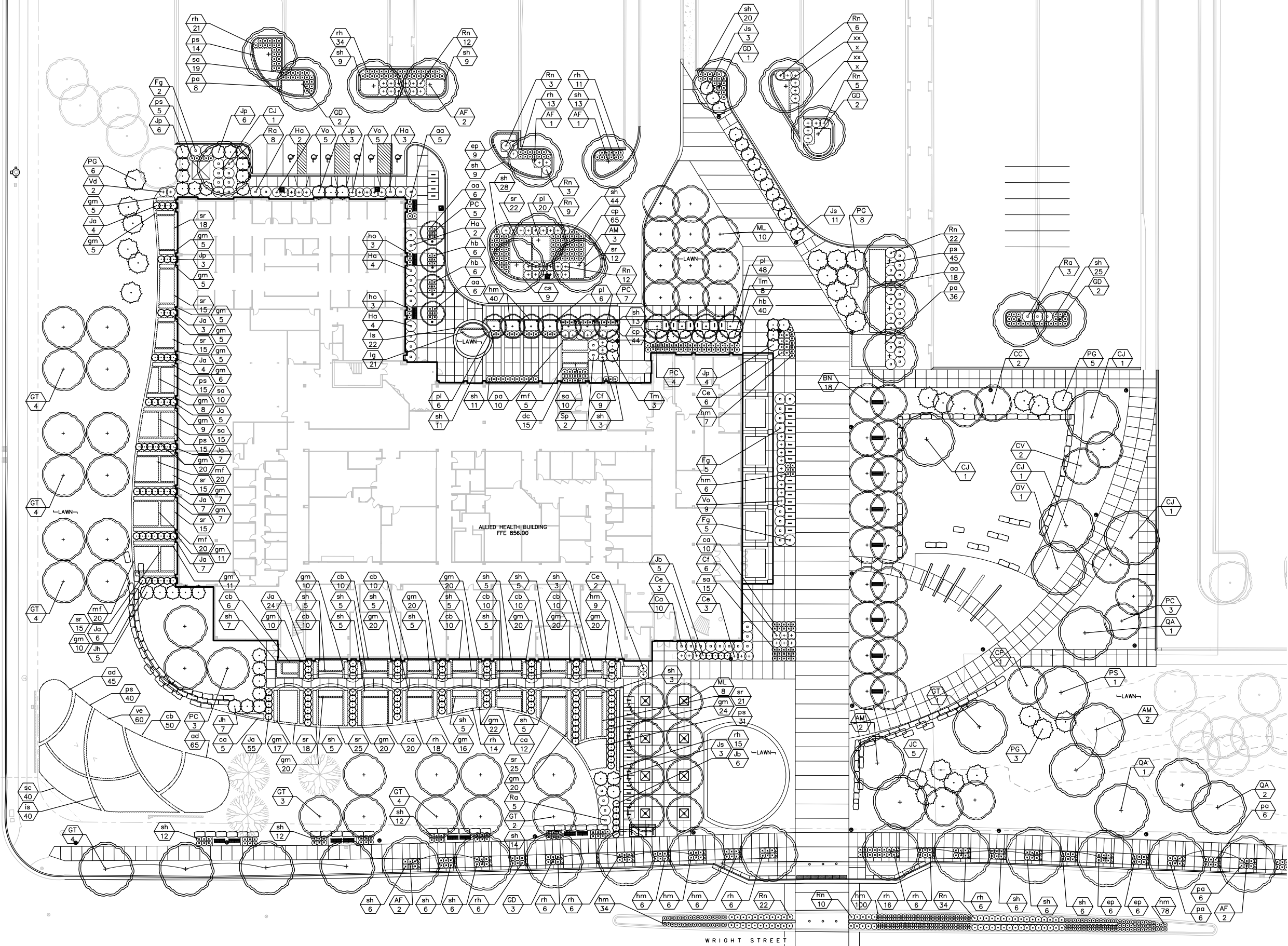
Conservation Design Forum
375 West First Street
Elmhurst, Illinois 60126
630.559.2000 Phone
630.559.2030 Fax
www.cdfinc.com

DRAWING

LANDSCAPE PLAN
ENLARGEMENT

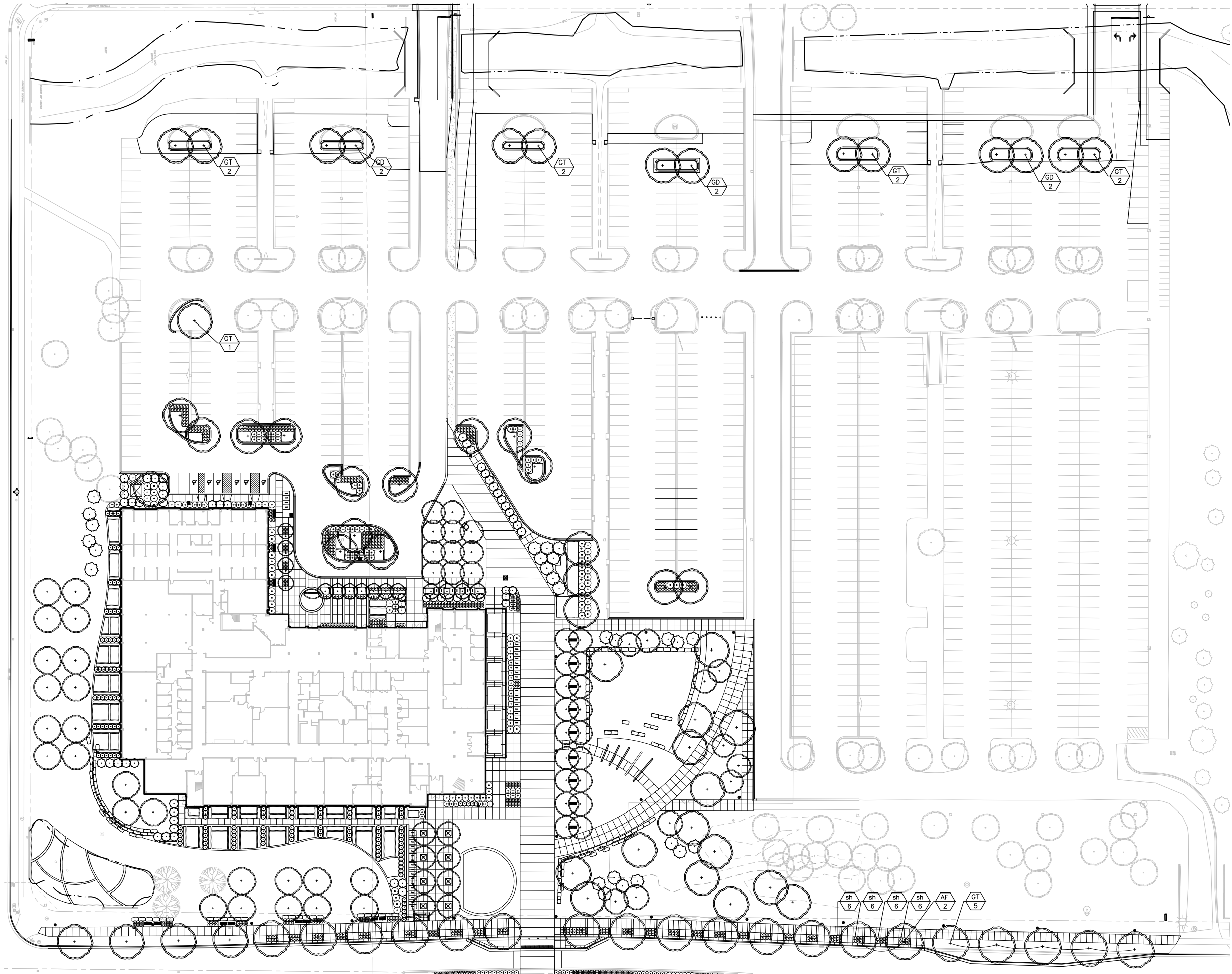
Sheet Number

LP-402



File: P:\2400\2434-MATC_LS_MP\CAD\LP-LS.dwg User: phannon Layout: LP-402 Plotted: May 03, 2011 - 5:07pm

File: P:\2400\2434-MATC-US_MP\CAD\LP-403 User: phannon Plotted: May 03, 2011 - 5:08pm



Project Title

Truax
HEB

City of Madison,
Wisconsin

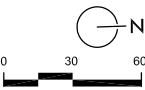
Issued For:	Approval
Issue Date:	05/04/2011
SAA Project No.	2434
MC Project No.	-
Bid Pkg No.	B11-025

Revision	Date



Conservation Design Forum
375 West First Street
Einharts, Illinois 60126
630.559.2000 Phone
630.559.2030 Fax
www.cdfinc.com

DRAWING
LANDSCAPE PLAN
ENLARGEMENT



Sheet Number
LP-403

File: P:\2420\2424-MATC-LS-MP(CAD)\P-LS.dwg Layout: Schedule User: phannon Plotted: May 03, 2011 - 4:41pm

LANDSCAPE PLANT LEGEND

Symbol	Botanical name	Common Name	Size	Root	Quantity	Comments
SHADE TREES						
AF	Acer x freemanii 'Morgan'	Morgan Freeman Maple	2.5" Cal.	B&B	—	
AM	Acer miyabei 'Morton'	State Street Maple	2.5" Cal.	B&B	—	
BN	Betula nigra 'Heritage'	Heritage River Birch	2.5" Cal.	B&B	—	
CJ	Cercidiphyllum japonicum	Katsura Tree	2.5" Cal.	B&B	—	
GD	Gymnocladus dioicus	Kentucky Coffeetree	2.5" Cal.	B&B	—	
GT	Gleditsia triacanthos 'Skymaster'	Skymaster Honeylocust	2.5" Cal.	B&B	—	
TD	Taxodium distichum	Bald Cypress	2.5" Cal.	B&B	—	
OV	Ostrya virginiana	Hop Hornbeam	2.5" Cal.	B&B	—	
PS	Prunus serotina	Black Cherry	2.5" Cal.	B&B	—	
QA	Quercus alba	Swamp White Oak	2.5" Cal.	B&B	—	
QP	Quercus palustris 'Green Pillar'	Green Pillar Pin Oak	2.5" Cal.	B&B	—	
QR	Quercus rubra	Red Oak	2.5" Cal.	B&B	—	

ORNAMENTAL TREES						
AG	Amelanchier x grandifolia 'Autumn Brilliance'	Autumn Brilliance Serviceberry	1.5" Cal.	B&B	—	
AT	Acer truncatum	Purpleblow Maple	1.5" Cal.	B&B	—	
CA	Cornus alternifolia	Pagoda Dogwood	1.5" Cal.	B&B	—	
CC	Cercis canadensis	Redbud	1.5" Cal.	B&B	—	
CP	Crataegus phaenopyrum	Washington Hawthorne	1.5" Cal.	B&B	—	
CV	Chionanthus virginicus	White Fringe Tree	1.5" Cal.	B&B	—	
PC	Pyrus calleryana 'Cleveland Select'	Cleveland Select Pear	1.5" Cal.	B&B	—	
PM	Prunus maackii	Amur Chokecherry	1.5" Cal.	B&B	—	
PM	Prunus maackii	Amur Chokecherry	1.5" Cal.	B&B	—	
ML	Magnolia x loebneri	Loebner Magnolia	1.5" Cal.	B&B	—	

EVERGREEN TREES						
JC	Juniperus cupressifolia	Hillspire Juniper	8' Ht.	B&B	—	
PA	Picea abies	Norway Spruce	8' Ht.	B&B	—	
PG	Picea glauca var. densata	Black Hills Spruce	8' Ht.	B&B	—	—

SHRUB TYPE A (> 8' ht.)						
Cm	Cornus mas 'Golden Glory'	Golden Glory Corneliancherry Dogwood	3'-5' Ht.	B&B	—	
Cr	Cornus racemosa	Gray Dogwood	3'-5' Ht.	B&B	—	
Cs	Cornus sericea	Redosier Dogwood	3'-5' Ht.	B&B	—	
Rt	Rhus typhina 'Laciniata'	Cutleaf Staghorn Sumac	3'-5' Ht.	B&B	—	—

SHRUB TYPE B (4'–8' ht.)						
Ca	Clethra alnifolia 'Hummingbird'	Hummingbird Clethra	5 Gal.	CG	—	
Cl	Cotoneaster lucidus	Hedge Cotoneaster	5 Gal.	CG	—	
Cf	Calycanthus floridus	Carolina Allspice	5 Gal.	CG	—	
Hp	Hydrangea paniculata 'Limelight'	Panicle Hydrangea	5 Gal.	CG	—	
Rr	Rosa 'Radsunny'	The Sunny Knock Out Rose	5 Gal.	CG	—	
Sp	Salix purpurea 'Nano'	Dwarf Arctic Blue Willow	5 Gal.	CG	—	
Vd	Viburnum dentatum 'Autumn Jazz'	Autumn Jazz Arrowwood Viburnum	5 Gal.	CG	—	

Symbol	Botanical name	Common Name	Size	Root	Quantity	Comments
SHRUB TYPE C (< 4' ht.)						
Bg	Buxux 'Green Velvet'	Green Velvet Boxwood	3 Gal.	CG	—	
Ce	Ceanothus americanus	New Jersey Tea	3 Gal.	CG	—	
De	Deutzia gracilis	Slender Deutzia	3 Gal.	CG	—	
Di	Diervilla lonicera	Dwarf Bush Honeysuckle	3 Gal.	CG	—	
Fg	Fothergilla gardenii 'Mt. Airy'	Mt. Airy Dwarf Fothergilla	3 Gal.	CG	—	
Ha	Hydrangea arborescens 'Annabelle'	Annabelle Hydrangea	3 Gal.	CG	—	
Ra	Rhus aromatica 'Gro-Low'	Gro-Low Fragrant Sumac	3 Gal.	CG	—	
Rn	Rosa 'Nearly Wild'	Nearly Wild Shrub Rose	3 Gal.	CG	—	
Sn	Spiraea nipponica 'Snowmound'	Snowmound Spirea	3 Gal.	CG	—	
Vo	Viburnum opulus 'Nanum'	European Cranberrybush	3 Gal.	CG	—	

SHRUB TYPE D (Evergreen; 5'–8' Ht.)						
Tr	Thuja occidentalis 'Robusta'	Ware or Robusta Juniper	3 Gal.	CG	—	

SHRUB TYPE D (Evergreen; 2'–5' Ht.)						
Ja	Juniperus sabina 'Arcadia'	Arcadia Juniper	3 Gal.	CG	—	
Jb	Juniperus squamata 'Blue Star'	Blue Star Juniper	3 Gal.	CG	—	
Jh	Juniperus horizontalis 'Bar Harbor'	Bar Harbor Creeping Juniper	3 Gal.	CG	—	
Jp	Juniperus 'Pfitzeriana Compacta'	Compact Pfitzer Juniper	3 Gal.	CG	—	
Js	Juniperus chinensis 'Sea Green'	Sea Green Juniper	3 Gal.	CG	—	
Md	Microbiota decussata	Siberian Cypress	3 Gal.	CG	—	
Tm	Taxus x media 'Tauntonii'	Taunton Yew	3 Gal.	CG	—	

PERENNIALS/GRASSES/GROUNDCOVERS						
aa	Astilbe x arendsii 'White Gloria'	White Gloria Astilbe	1 Gal.	CG	—	
ac	Aquilegia canadensis	American Columbine	1 Gal.	CG	—	
ad	Aster divaricatus	White Wood Aster	1 Gal.	CG	—	
ag	Allium 'Globemaster'	Globemaster Onion	1 Gal.	CG	—	
am	Alchemilla ssp.	Lady's Mantle	1 Gal.	CG	—	
ar	Ajuga reptans	Bugleweed	1 Gal.	CG	—	
ca	Calamagrostis acutiflora 'Karl Foerster'	Karl Foerster Feather Reed Grass	1 Gal.	CG	—	
cb	Calamagrostis brachytricha	Reed Grass	1 Gal.	CG	—	
cl	Chasmanthium latifolia	Northern Sea Oats	1 Gal.	CG	—	
cp	Carex pennsylvanica	Pennsylvania Sedge	1 Gal.	CG	—	
cs	Coreopsis grandiflora 'Sunray'	Sunray Tickseed	1 Gal.	CG	—	
dc	Deschampsia caespitosa	Tufted Hair Grass	1 Gal.	CG	—	
ep	Echinacea purpurea	Purple Coneflower	1 Gal.	CG	—	
gm	Geranium macrorrhizium 'Bevan's Variety'	Bevan's Bigroot Geranium	1 Gal.	CG	—	
hb	Hosta 'Blue Angel'	Blue Angel Hosta	1 Gal.	CG	—	
ho	Hosta 'Royal Standard'	Royal Standard Hosta	1 Gal.	CG	—	
hh	Hemerocallis 'Happy Returns'	Happy Returns Daylily	1 Gal.	CG	—	
lg	Lavandula x intermedia 'Grosso'	Grosso Lavender	1 Gal.	CG	—	
ls	Liriope spicata	Creeping Lily Turf	1 Gal.	CG	—	
hs	Helictotrichon sempervirens	Blue Oat Grass	1 Gal.	CG	—	
hm	Hemerocallis 'Mini Stella'	Mini Stella Daylily	1 Gal.	CG	—	
is	Iris siberica 'Ceasar's Brother'	Ceasar's Brother Siberian Iris	1 Gal.	CG	—	
mf	Monarda 'Petite Delight'	Petite Delight Beebalm	1 Gal.	CG	—	
nf	Nepeta x fassenii 'Six Hills Giant'	Six Hills Giant Catmint	1 Gal.	CG	—	
pl	Phlox subulata	Creeping Phlox	1 Gal.	CG	—	
ps	Panicum virgatum 'Shenandoah'	Shenandoah Switch Grass	1 Gal.	CG	—	
pa	Perovskia atriplicifolia 'Longin'	Longin Russian Sage	1 Gal.	CG	—	
ph	Physostegia virginiana	Obedient Plant	1 Gal.	CG	—	
pq	Parthenocissus quinquefolia 'Star Showers'	Star Showers Virginia Creeper	1 Gal.	CG	—	
rh	Rudbeckia fulgida var. Sullivantii	Goldstrum Black Eyed Susan	1 Gal.	CG	—	
sh	Sporobolus heterolepis	Prairie Dropseed	1 Gal.	CG	—	
sa	Sedum 'Autumn Joy'	Autumn Joy Sedum	1 Gal.	CG	—	
sc	Scirpus validus	Great Bulrush	1 Gal.	CG	—	
sr	Solidago rugosa 'Fireworks'	Fireworks Goldenrod	1 Gal.	CG	—	
sn	Salvia nemerosa 'May Night'	May Night Salvia	1 Gal.	CG	—	
ve	Verbena hastata	Blue Vervain	1 Gal.	CG	—	



Project Title

Truax
HEB

City of Madison,
Wisconsin

Issued For: Approval

Issue Date: 05/04/2011

SAA Project No. 2434

MC Project No. -

Bid Pkg No. B11-025

Revision Date



Conservation Design Forum
375 West First Street
Einharts, Illinois 60126
630.559.2000 Phone
630.559.2030 Fax
www.cdfinc.com

DRAWING

LANDSCAPE
PLANT SCHEDULE

Sheet Number

LP-420

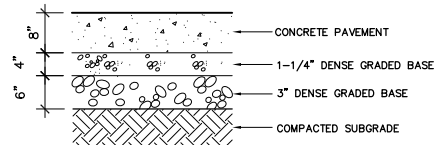
- NOTES:
1. MEDIUM BROOM FINISH, PERPENDICULAR TO DIRECTION OF TRAVEL, UNLESS OTHERWISE STATED.
 2. PROVIDE EXPANSION JOINTS 30' ALL WAYS, MINIMUM
 3. STANDARD COLOR CONCRETE UNLESS NOTED.



CONCRETE PAVEMENT

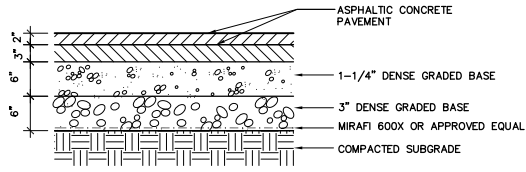
SCALE 1" = 1'-0"

- NOTES:
1. LONGITUDINAL (EXPANSION) JOINTS SHALL HAVE 24" LONG #4 EPOXY COATED REBAR AT 39" O.C. AT A DEPTH OF 3 3/4" ± 1"
 2. TRANSVERSE JOINTS SHALL HAVE 18" LONG, 1 1/2" DIA. EPOXY COATED, SMOOTH DOWEL BARS AT 72" O.C. AT 4" DEPTH.
 3. STANDARD CONCRETE COLORED UNLESS NOTED.



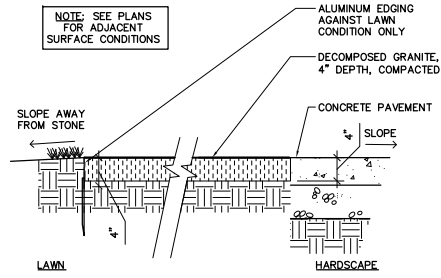
VEHICULAR LOAD CONCRETE

SCALE 1" = 1'-0"



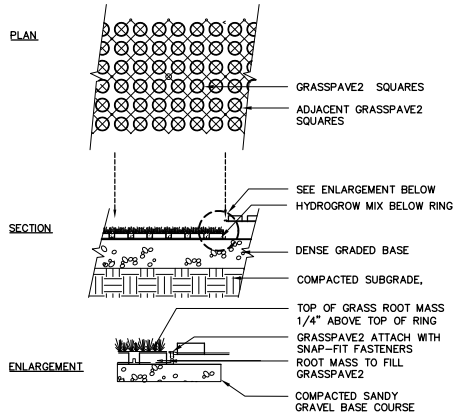
ASPHALT PAVEMENT

SCALE 1" = 1'-0"



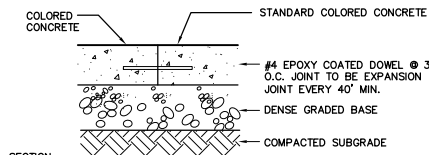
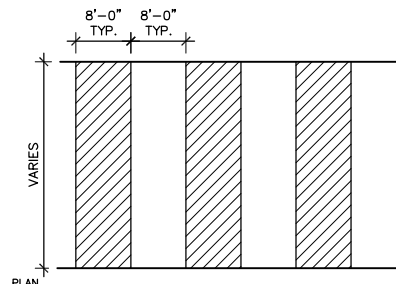
GRAVEL SURFACING

SCALE 1" = 1'-0"



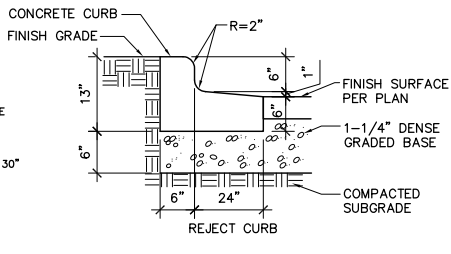
GRASS PAVE

SCALE 1" = 1'-0"



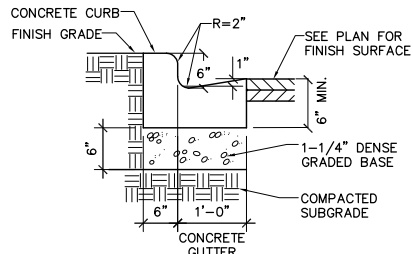
MAIN WALK

SCALE 1" = 1'-0"



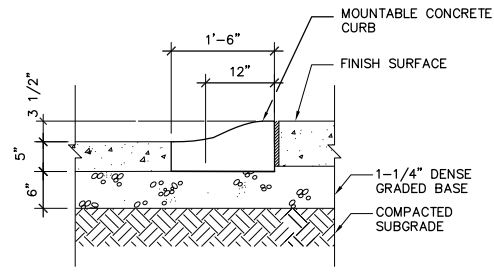
18" REJECT CURB

SCALE 1" = 1'-0"



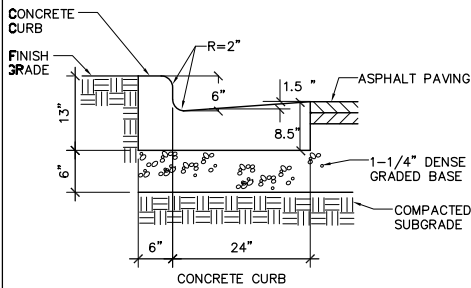
18" CONCRETE CURB

SCALE 1" = 1'-0"



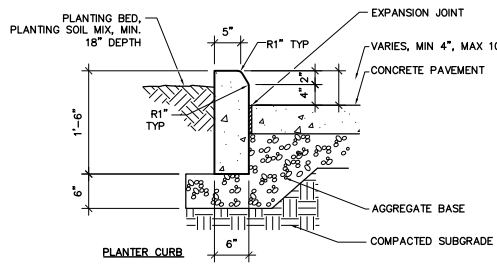
MOUNTABLE CURB

SCALE 1" = 1'-0"



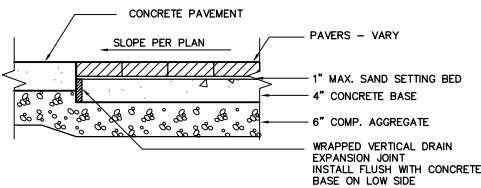
30" CONCRETE CURB

SCALE 1" = 1'-0"



PLANTER CURB

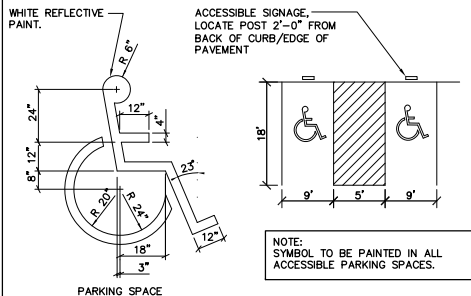
SCALE 1" = 1'-0"



- NOTES:
1. JOINT CONCRETE UNDER PAVERS TO CONTROL CRACKING
 2. SEE ARMORY STEP BUTTRESS AND COMPASS DETAIL FOR PAVING PATTERN 1/L304 & 2/L307
 3. PROVIDE STANDARD EXPANSION JOINTS WHERE PAVEMENT ABUTS PAVEMENT OR STONE EXCEPT AS NOTED
 4. CONTRACTOR TO SUPPLY CITY WITH ANY SURPLUS PAVERS

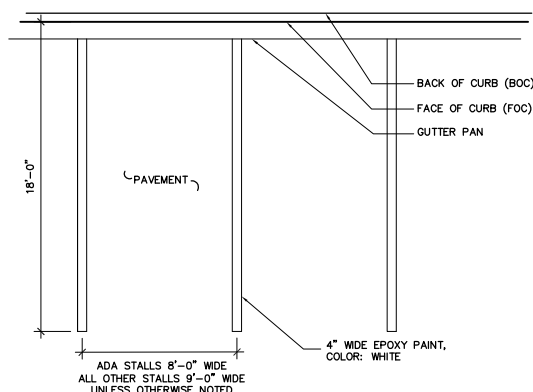
UNIT PAVERS

SCALE 1" = 1'-0"



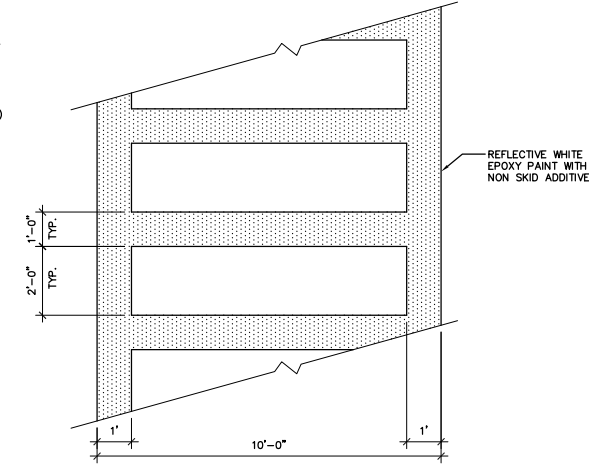
ACCESSIBLE PARKING PAVEMENT MARKING

SCALE 1" = 1'-0"



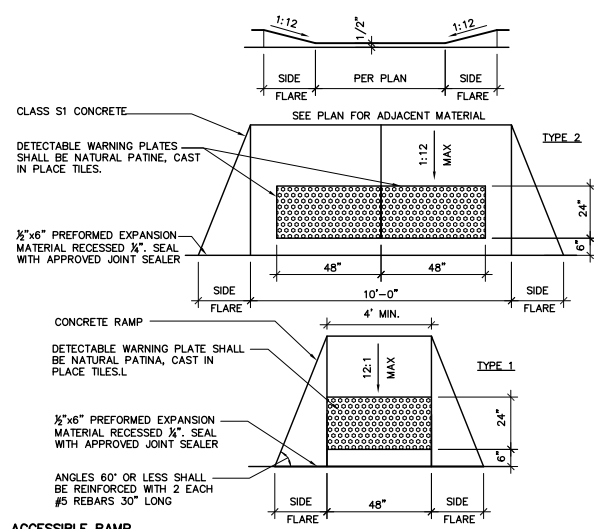
PAVEMENT STRIPING

SCALE 1" = 1'-0"



CROSSWALK STRIPING

SCALE 1" = 1'-0"



ACCESSIBLE RAMP

SCALE 1" = 1'-0"



Project Title

Truax
HEB

City of Madison,
Wisconsin

Issued For: Approval

Issue Date: 05/04/2011

SAA Project No. 2434

MC Project No. -

Bid Pkg No. B11-025

Revision Date



SAA Design Group, Inc.

717 John Nolen Drive
Madison, WI 53713
Ph. 608.255.0800
Fk. 608.255.7750
www.saa-modipon.com



Conservation Design Forum
375 West First Street
Einhart, Illinois 60126
630.559.2000 Phone
630.559.2030 Fax
www.cdfmc.com

DRAWING

DETAILS



Sheet Number

LP-501

File: P:\2400\2434-MATC-LS-MP-CAD\10-Dwg Layout D-2 User: phanman Plotted: May 03, 2011 - 4:43pm

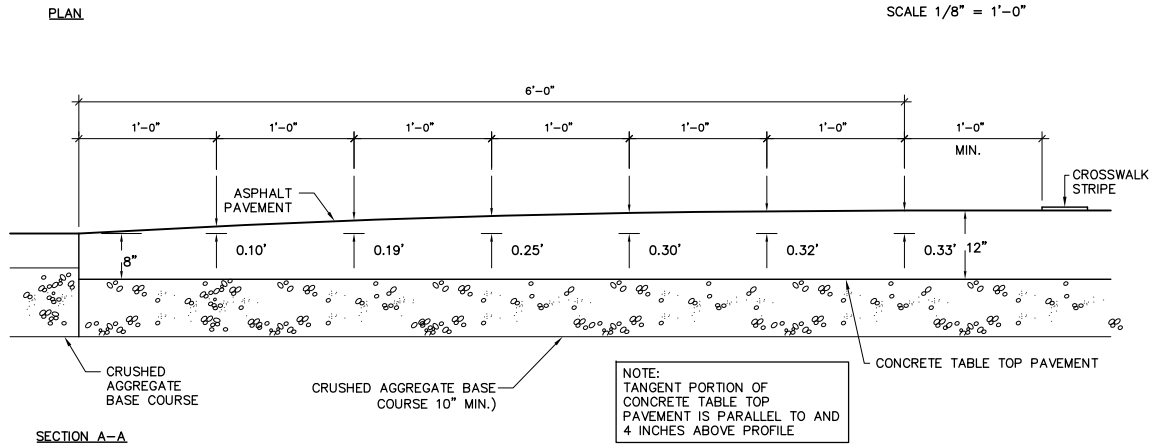
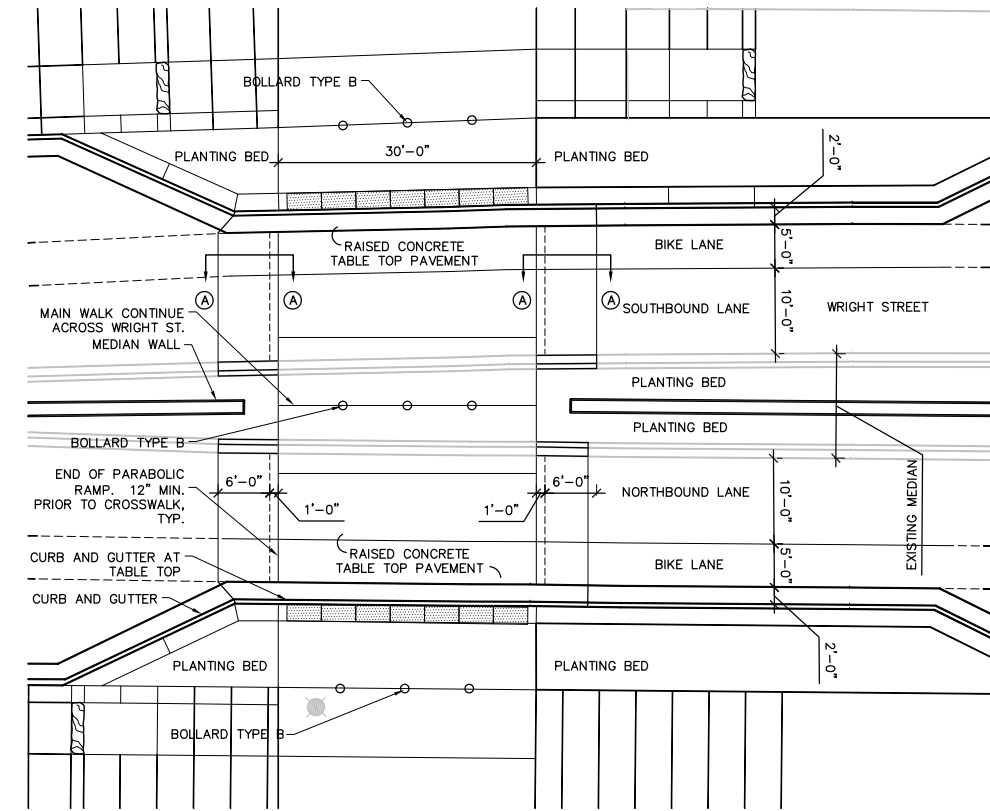
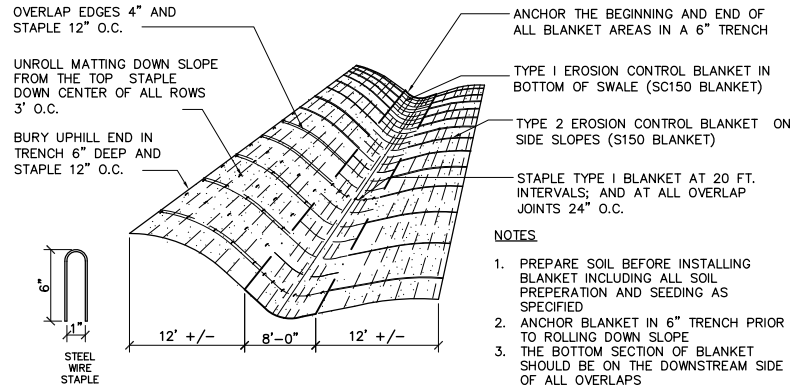


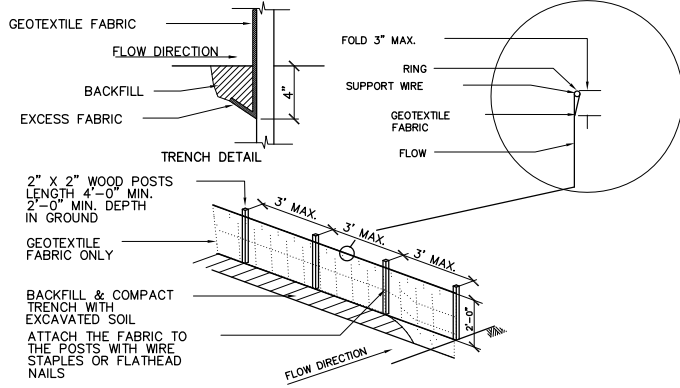
TABLE TOP CROSSING

SCALE 1/2" = 1'-0"



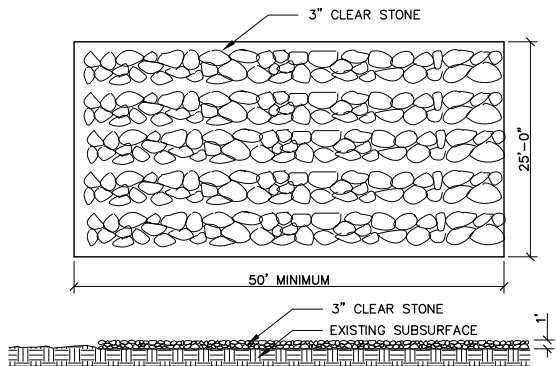
SLOPE EROSION CONTROL

SCALE 1" = 1'-0"



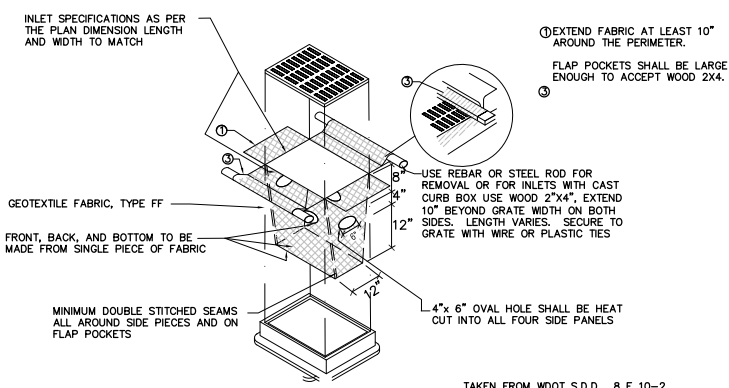
SILT FENCE

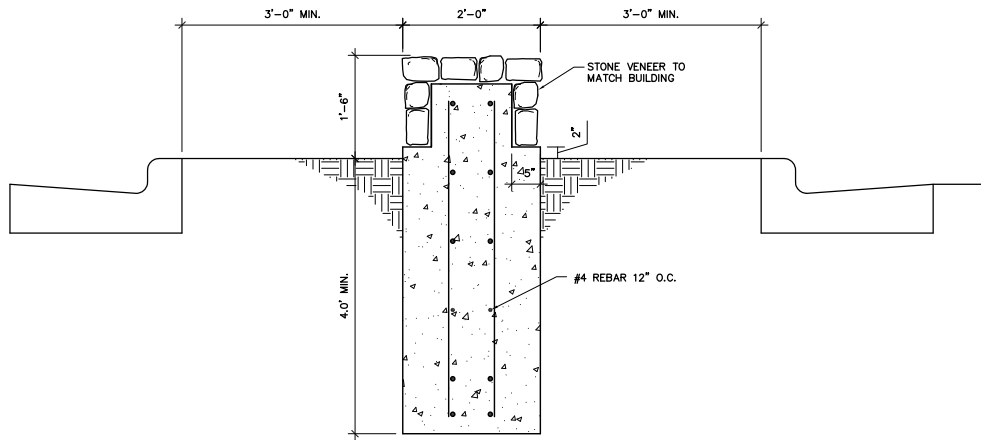
SCALE 1" = 1'-0"



TRACKING PAD

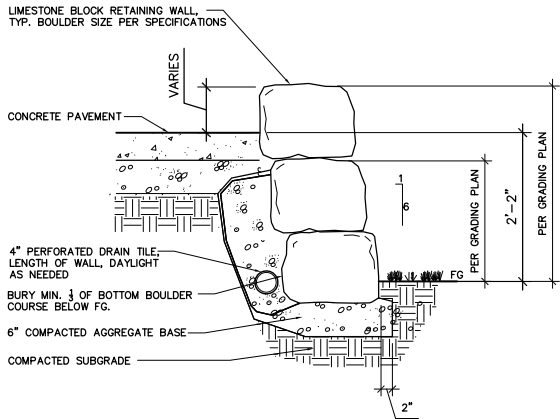
NTS





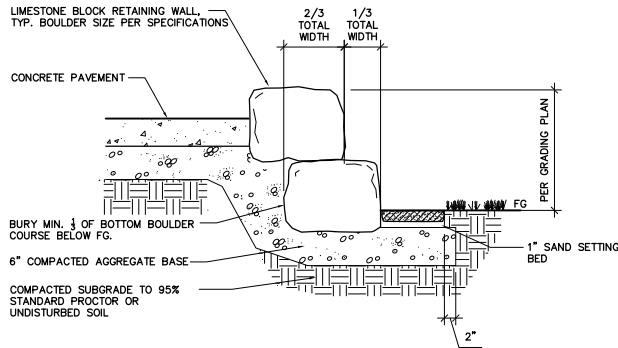
MEDIAN WALL

SCALE 1" = 1'-0"



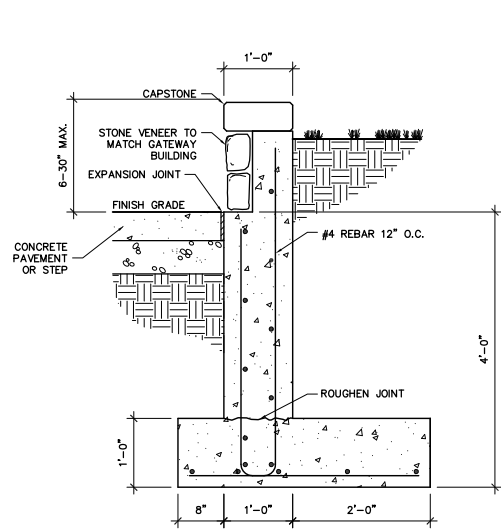
STONE WALL A
SECTION

SCALE 1" = 1'-0"



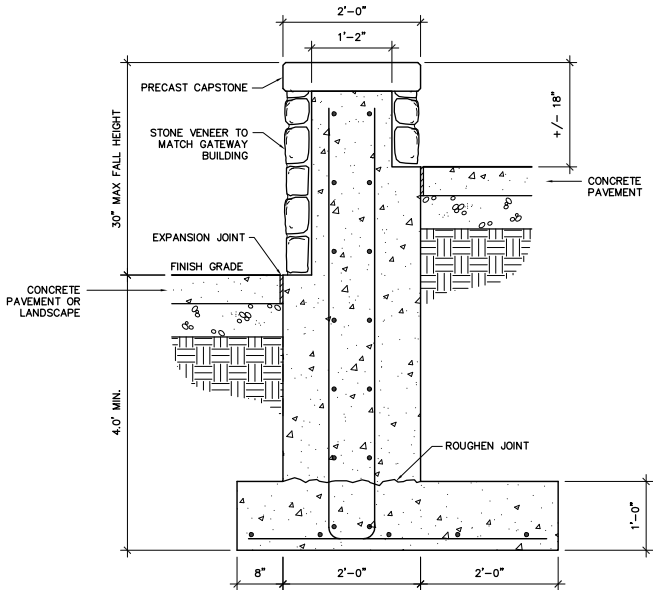
STONE WALL B
SECTION

SCALE 1" = 1'-0"



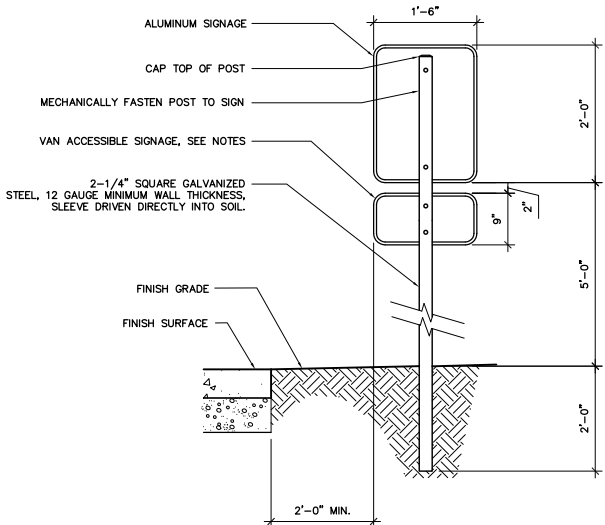
VENEER PLANTER

SCALE 1" = 1'-0"



STONE VENEER WALL

SCALE 1" = 1'-0"



SIGN

SCALE 1" = 1'-0"

- NOTES:
1. SIGN BLANKS: USE ALUMINUM ALLOY 5052-H38 COMPLYING WITH ASTM B 209. USE BLANKS CONFORMING TO THE ALUMINUM ASSOCIATION, INC. RQMT.
 2. SIGN SHALL BE 0.08 INCH THICK SHEET
 3. MOUNT SIGNAGE WITH ALUMINUM, VANDAL PROOF HARDWARE
 4. ADA PARKING SIGN MUST BE A WHITE RECTANGLE WITH LONGER DIMENSION VERTICAL; HAVING A GREEN MESSAGE, AND A BLUE AND WHITE INTERNATIONAL SYMBOL OF ACCESSIBILITY. THE SIGN MAY BE EITHER REFLECTIVE OR NON-REFLECTIVE.
 5. ADD "VAN ACCESSIBLE" SIGNAGE WHERE INDICATED ON PLANS.
 6. ADD "FIRE LANE, NO PARKING" SIGNAGE WHERE INDICATED ON PLANS. SIGNAGE SHALL CONFORM WITH FC 503.3
 7. SEE SHEET LAYOUT PLAN FOR SIGNAGE TYPES AND LOCATIONS.



Project Title

Truax
HEB

City of Madison,
Wisconsin

Issued For: Approval
Issue Date: 05/04/2011
SAA Project No. 2434
MC Project No. -
Bid Pkg No. B11-025

Revision Date



Conservation Design Forum
375 West First Street
Erlanger, Illinois 60126
630.559.2000 Phone
630.559.2030 Fax
www.cdfmc.com

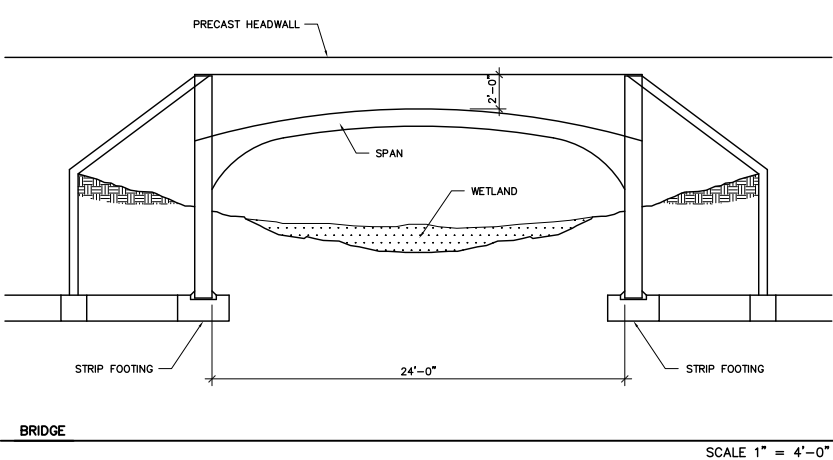
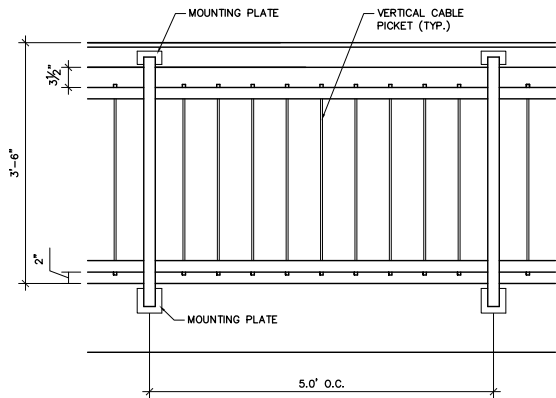
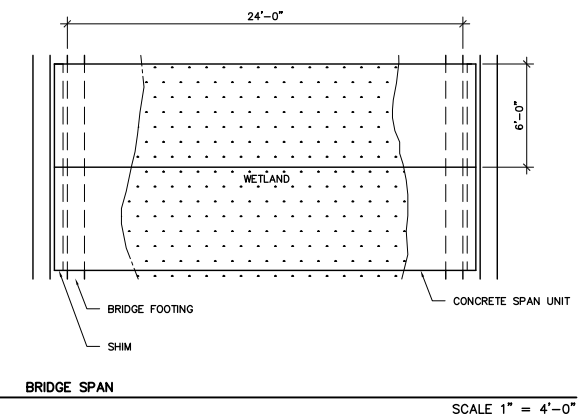
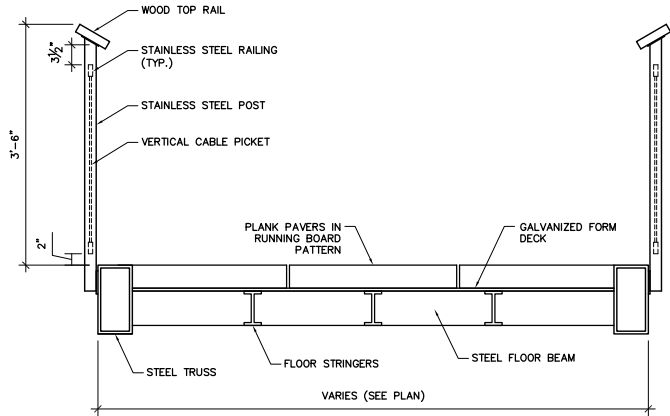
DRAWING

DETAILS



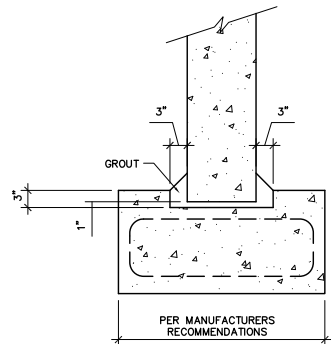
Sheet Number

LP-504



BRIDGE
SCALE 1" = 1'-0"

BRIDGE
SCALE 1" = 4'-0"



STRIP FOOTING
SCALE 1" = 1'-0"

P:\2400\2434-MATC\LS_MP\CAD\P-Dwg Layout D-5 User: phannon Plotted: May 03, 2011 - 4:47pm



Project Title

Truax
HEB

City of Madison,
Wisconsin

Issued For:	Approval
Issue Date:	05/04/2011
SAA Project No.	2434
MC Project No.	-
Bid Pkg No.	B11-025

Revision	Date



Conservation Design Forum
375 West First Street
Eau Claire, Illinois 60126
630.559.2000 Phone
630.559.2030 Fax
www.cdfinc.com

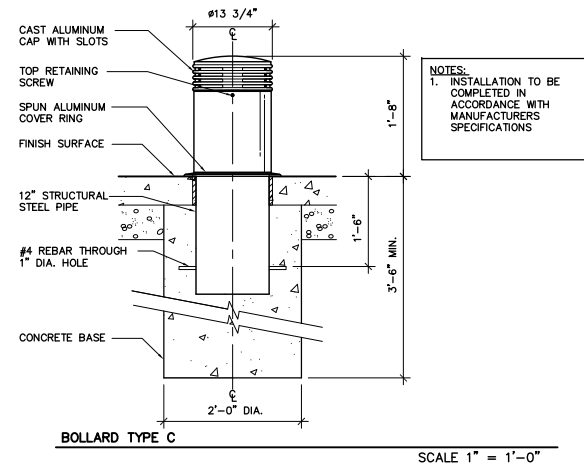
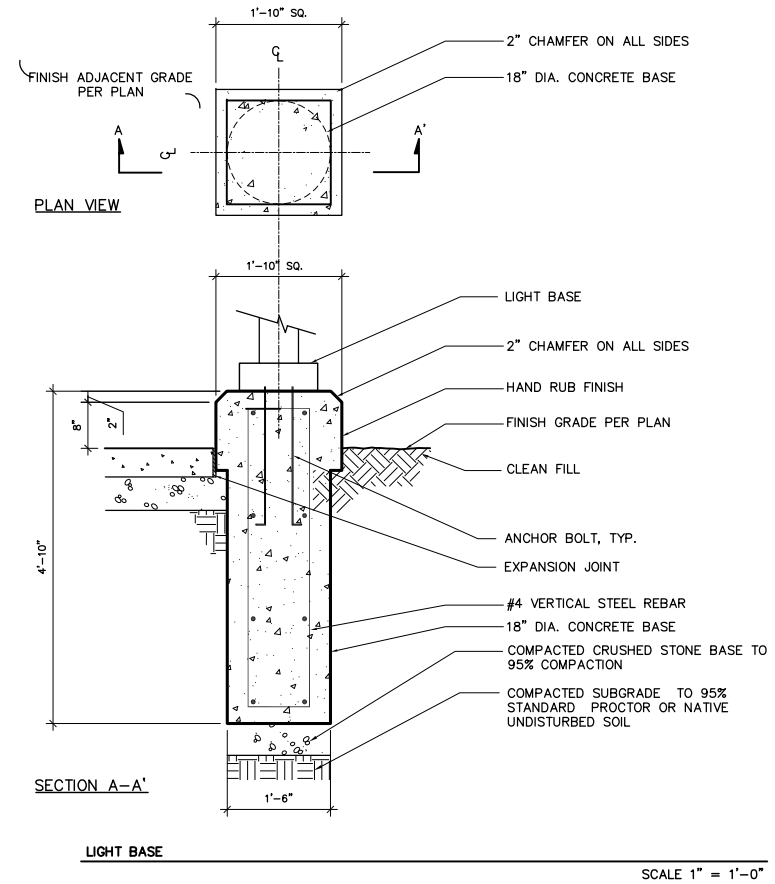
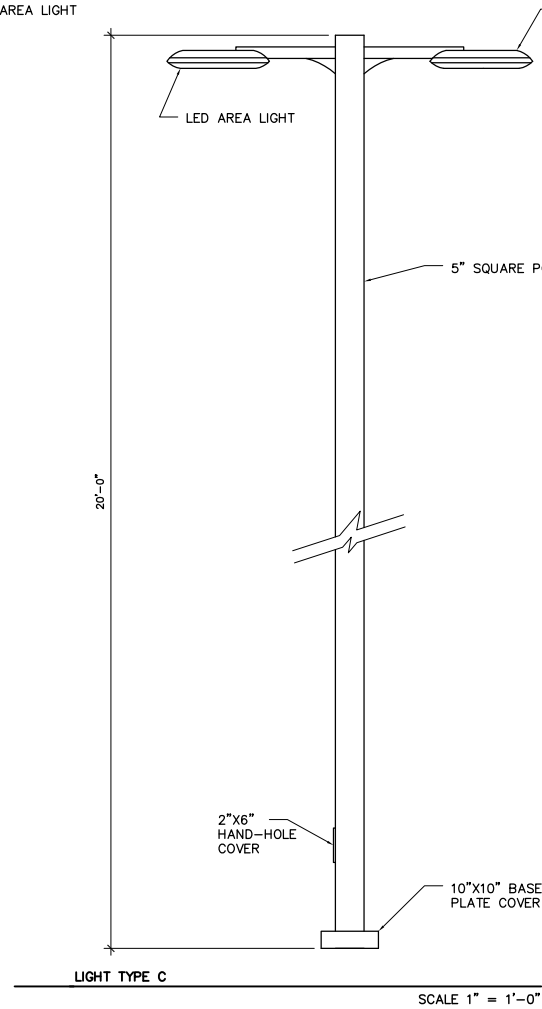
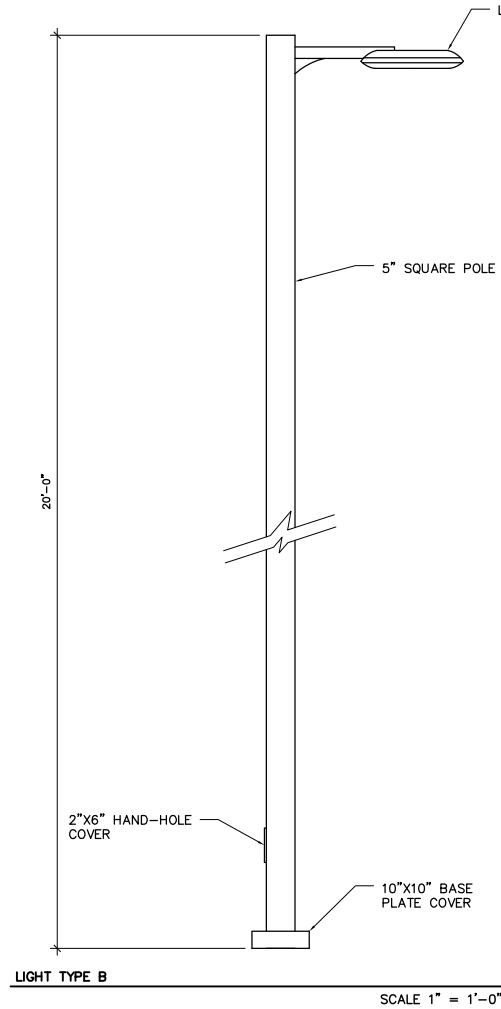
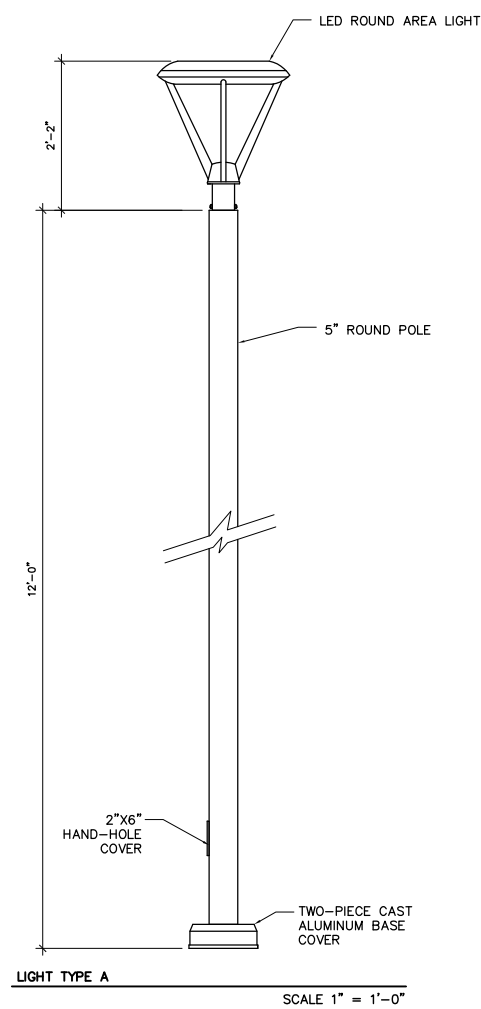
DRAWING
DETAILS



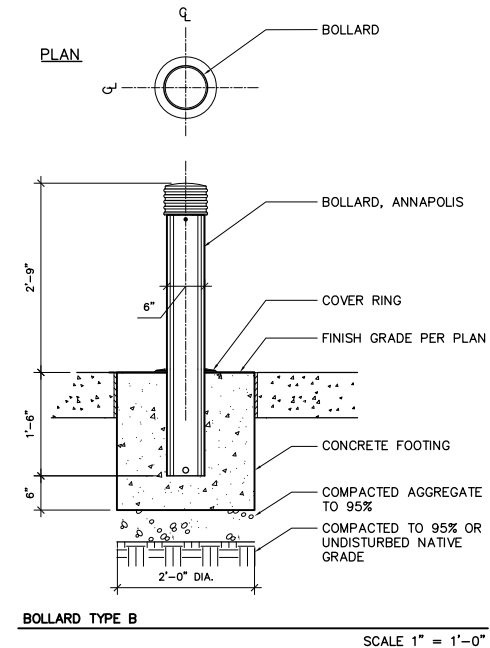
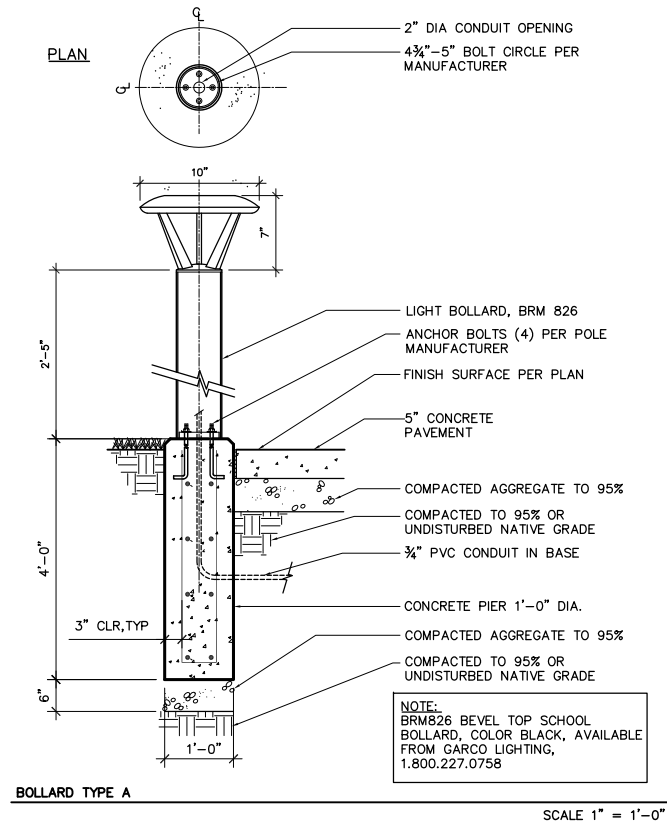
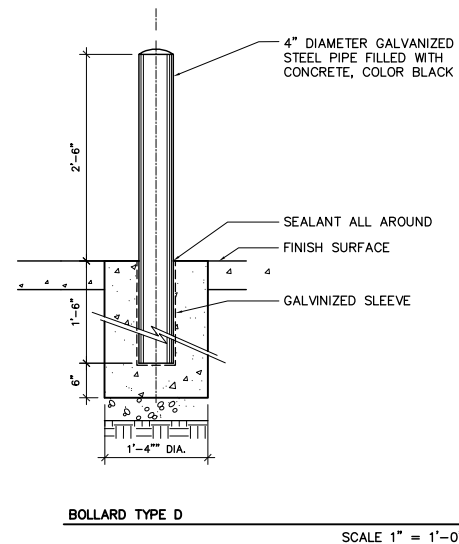
Sheet Number

LP-505

File: P:\2400\2434-MATC-LS-MP-CAD\2-Dwg Layout D=6 User: phanman Plotted: May 03, 2011 - 4:47pm



NOTES:
1. INSTALLATION TO BE COMPLETED IN ACCORDANCE WITH MANUFACTURER'S SPECIFICATIONS



Project Title

Truax
HEB

City of Madison,
Wisconsin

Issued For:	Approval
Issue Date:	05/04/2011
SAA Project No.	2434
MC Project No.	-
Bid Pkg No.	B11-025

Revision	Date
----------	------

SAA DESIGN GROUP
SAA Design Group, Inc.
717 John Nolen Drive
Madison, WI 53713
Ph. 608.255.0800
Fx. 608.255.7750
www.saa-madison.com



Conservation Design Form
375 West First Street
Einhorn, Illinois 60126
630.559.2000 Phone
630.559.2030 Fax
www.cdfinc.com

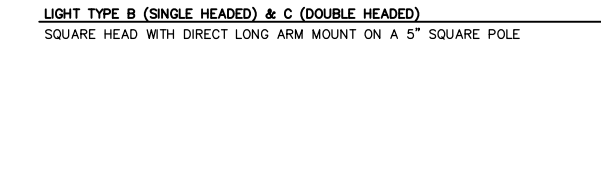
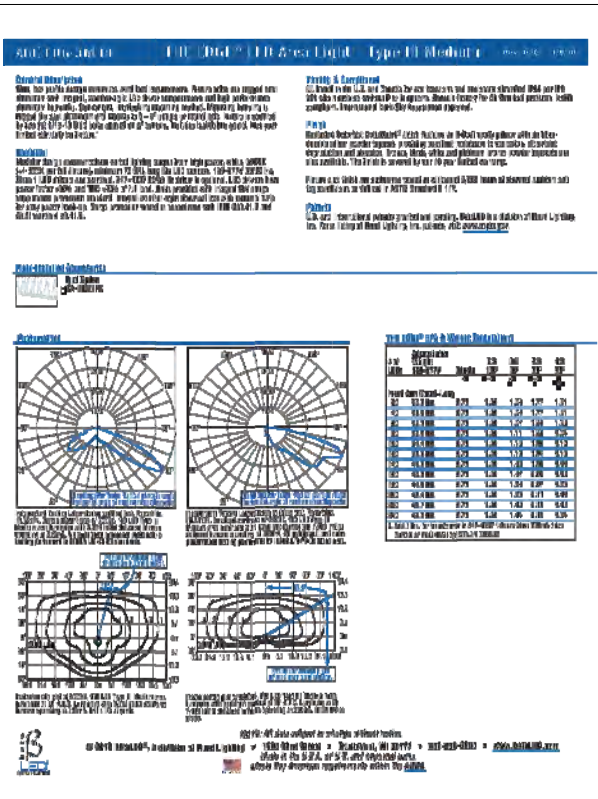
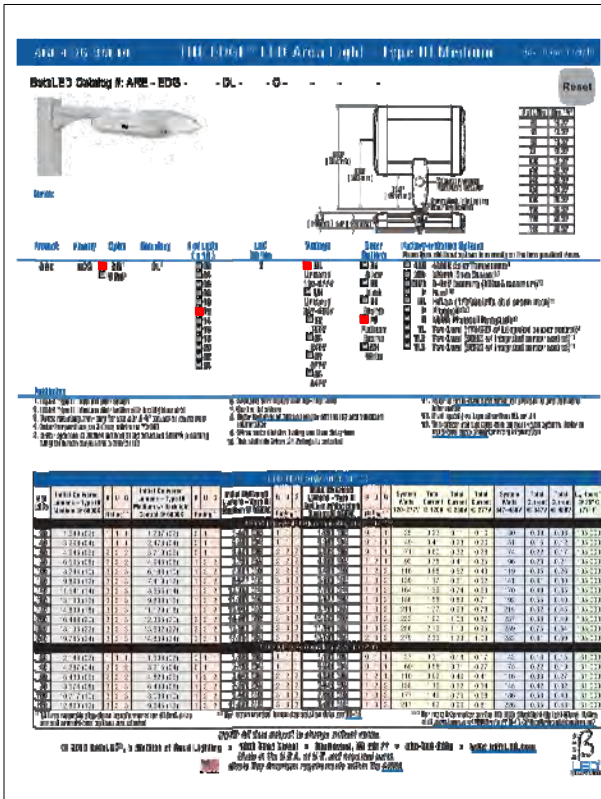
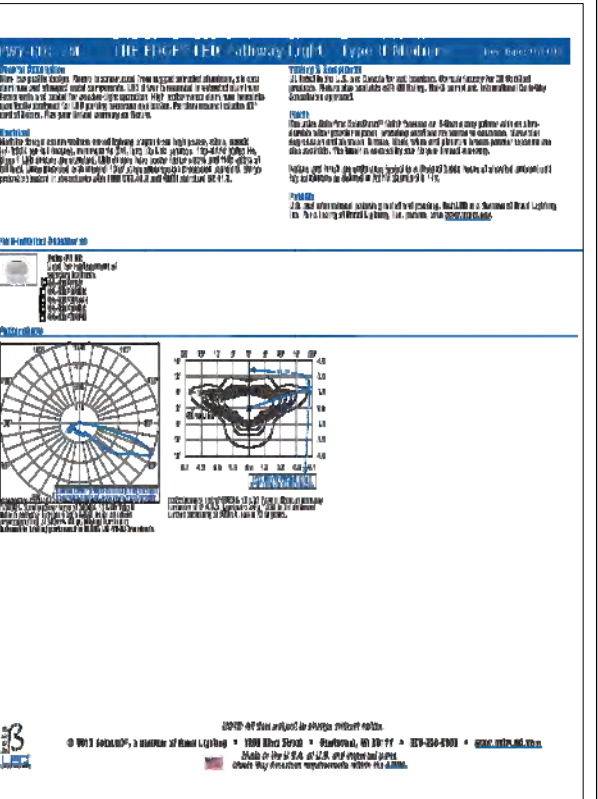
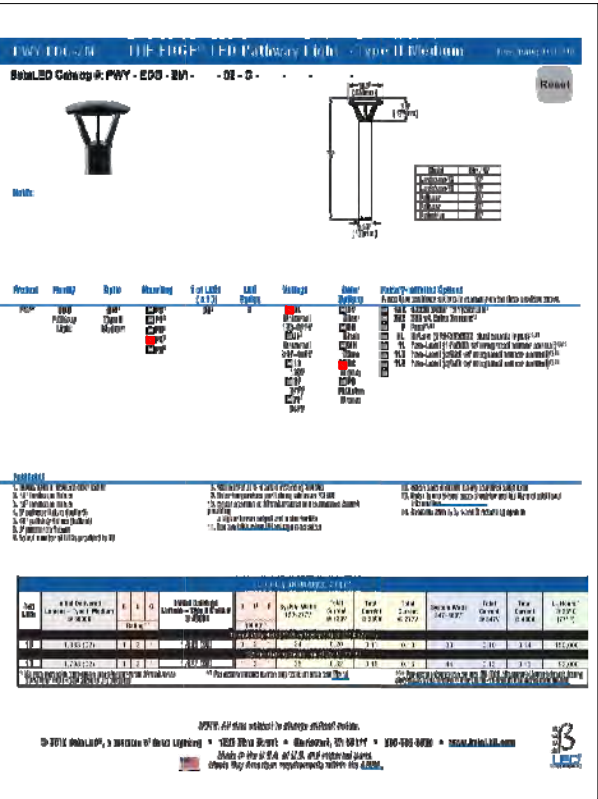
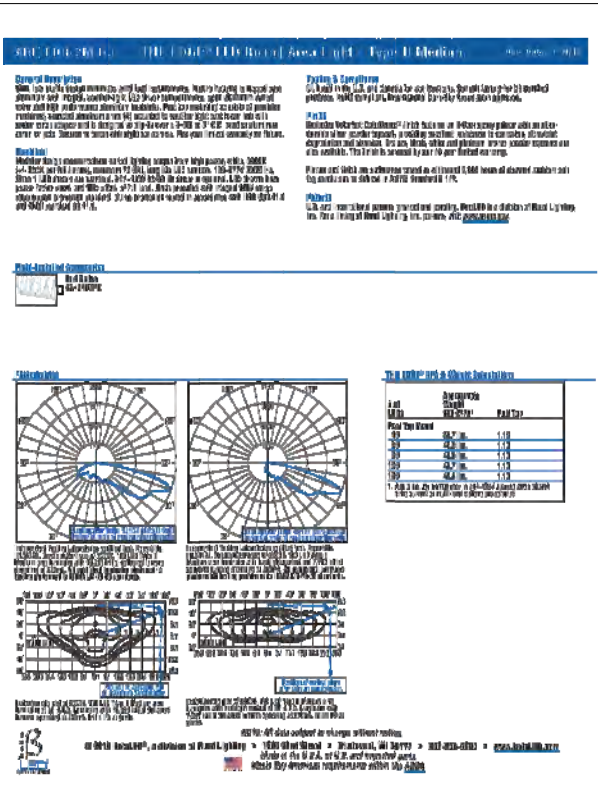
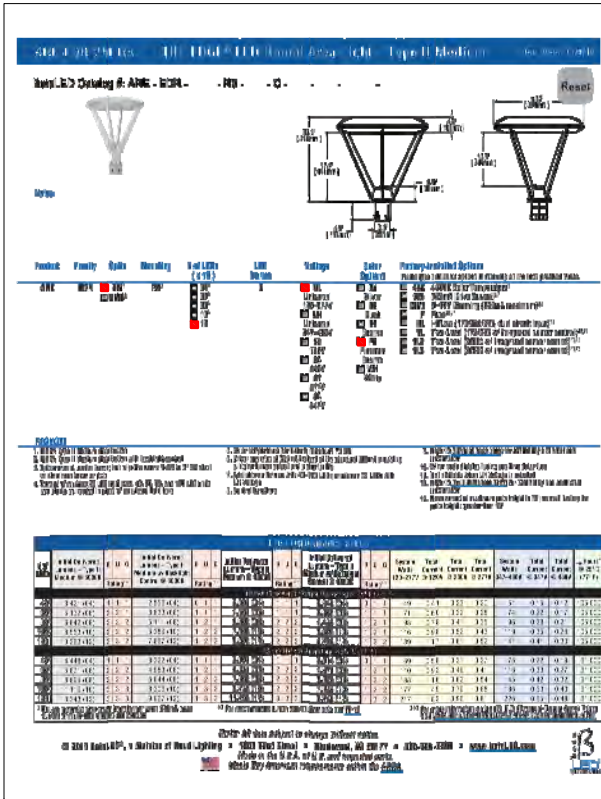
DRAWING

DETAILS



Sheet Number

LP-506



Project Title

Truax
HEB

City of Madison,
Wisconsin

Issued For: Approval

Issue Date: 05/04/2011

SAA Project No. 2434

MC Project No. -

Bid Pkg No. B11-025

Revision Date

SAA DESIGN GROUP
 SAA Design Group, Inc.
 717 John Nolen Drive
 Madison, WI 53713
 Ph. 608.255.0800
 Fax. 608.255.7750
 www.saa-madison.com

CDP
 Conservation Design Forum
 375 West First Street
 Eau Claire, Illinois 60126
 630.559.2000 Phone
 630.559.2030 Fax
 www.cdfm.com

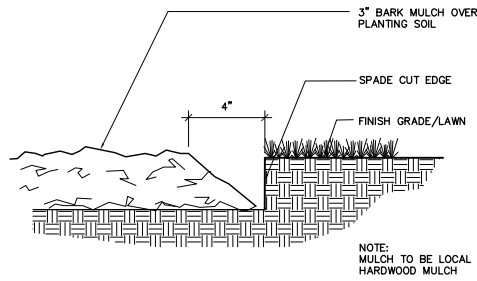
DRAWING

DETAILS



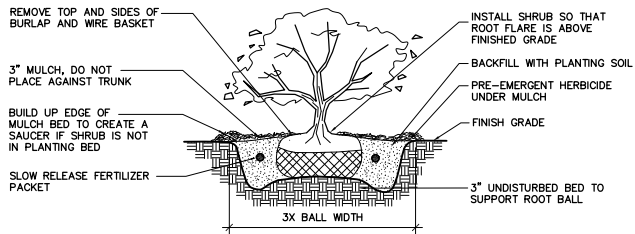
Sheet Number

LP-506A



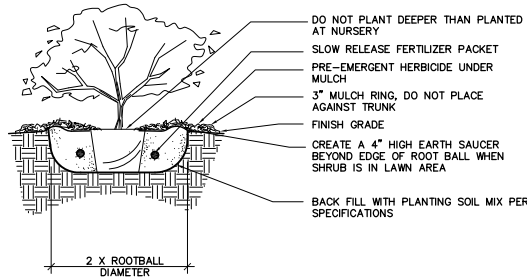
SHOVEL CUT EDGE

NTS



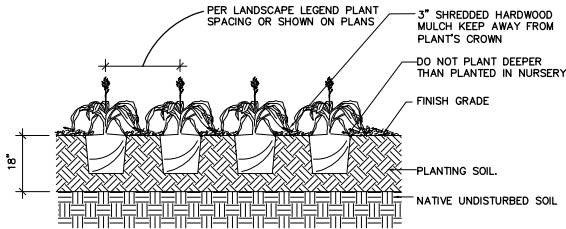
B&B SHRUB PLANTING DETAIL

NTS



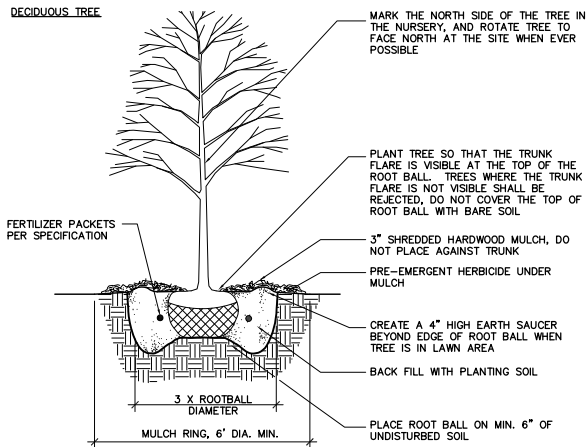
CONTAINER SHRUB PLANTING DETAIL

NTS



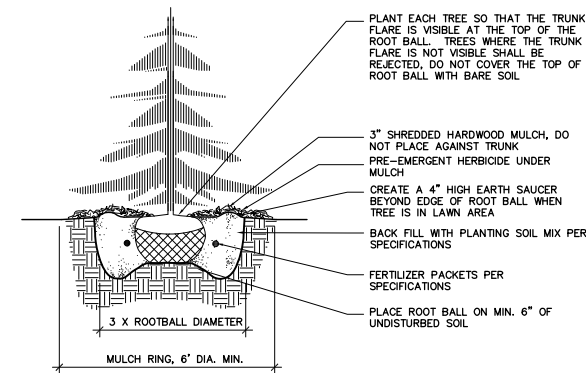
GROUNDCOVER/PERENNIAL/BULB PLANTING DETAIL

NTS



DECIDUOUS TREE

EVERGREEN TREE

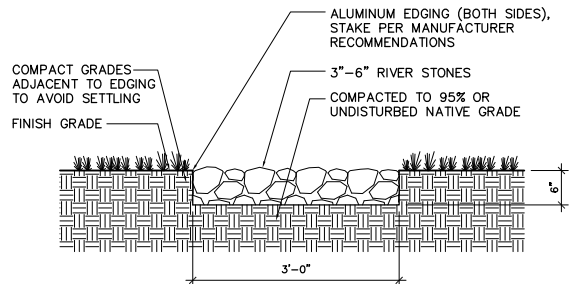


NOTES:

1. DO NOT HEAVILY PRUNE THE TREE AT PLANTING. PRUNE ONLY CROSSOVER LIMBS, CO-DOMINANT LEADERS, AND BROKEN OR DEAD BRANCHES. SOME INTERIOR TWIGS AND LATERAL BRANCHES MAY BE PRUNED; HOWEVER, DO NOT REMOVE THE TERMINAL BUDS OF BRANCHES THAT EXTEND TO THE EDGE OF THE CROWN
2. STAKE TREES ONLY UPON THE APPROVAL OF THE LANDSCAPE ARCHITECT
3. WRAP TREE TRUNKS ONLY UPON THE APPROVAL OF THE LANDSCAPE ARCHITECT
4. REMOVE ALL TWINE, ROPE, WIRE AND BURLAP FROM TOP AND SIDES OF ROOT BALL.

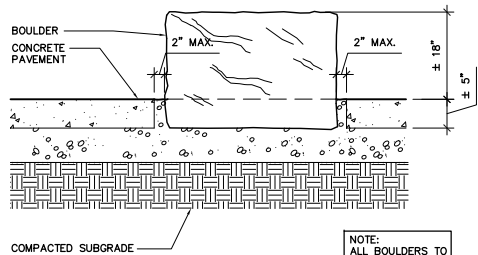
B&B TREE PLANTING DETAILS

NTS



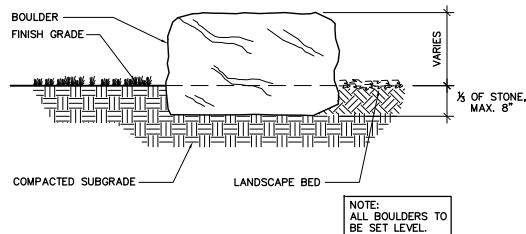
STONE RUNNEL

NTS



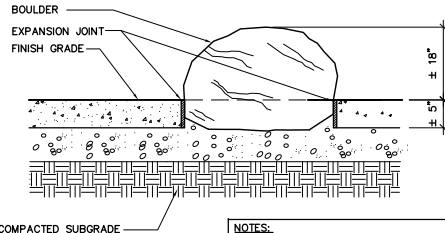
BOULDER SEATING

NTS



BOULDER IN LAWN/PLANTING AREA

NTS



BOULDER IN CONCRETE

NTS



Project Title

Truax
HEB

City of Madison,
Wisconsin

Issued For: Approval

Issue Date: 05/04/2011

SAA Project No. 2434

MC Project No. -

Bid Pkg No. B11-025

Revision Date



Conservation Design Form
375 West First Street
Elmhurst, Illinois 60126
630.559.2000 Phone
630.559.2030 Fax
www.cdform.com

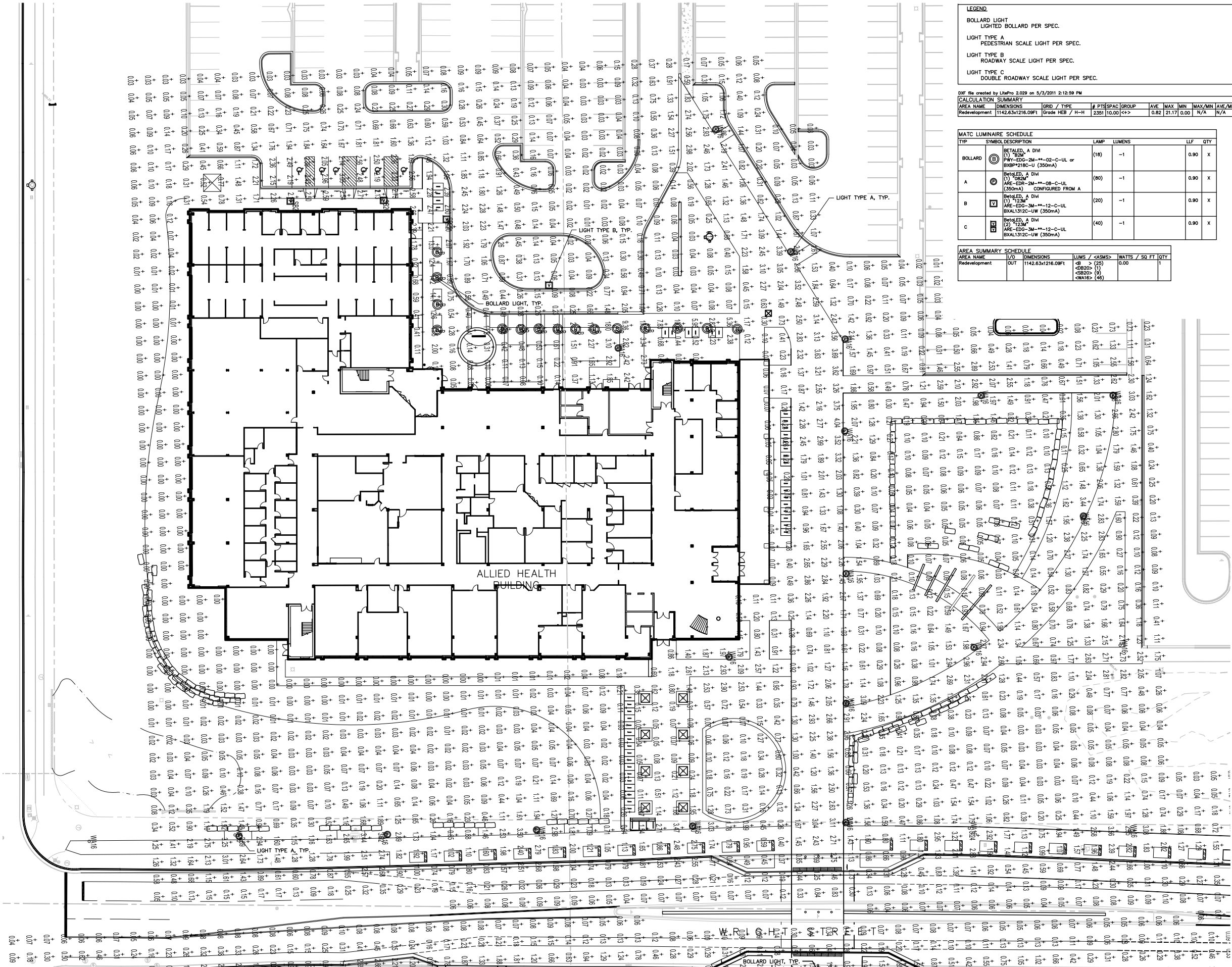
DRAWING

DETAILS



Sheet Number

LP-508



Project Title

Truax
HEB

City of Madison,
Wisconsin

Issued For: Approval

Issue Date: 05/04/2011

SAA Project No. 2434

MC Project No.

Bid Pkg No. B11-025

Revision Date



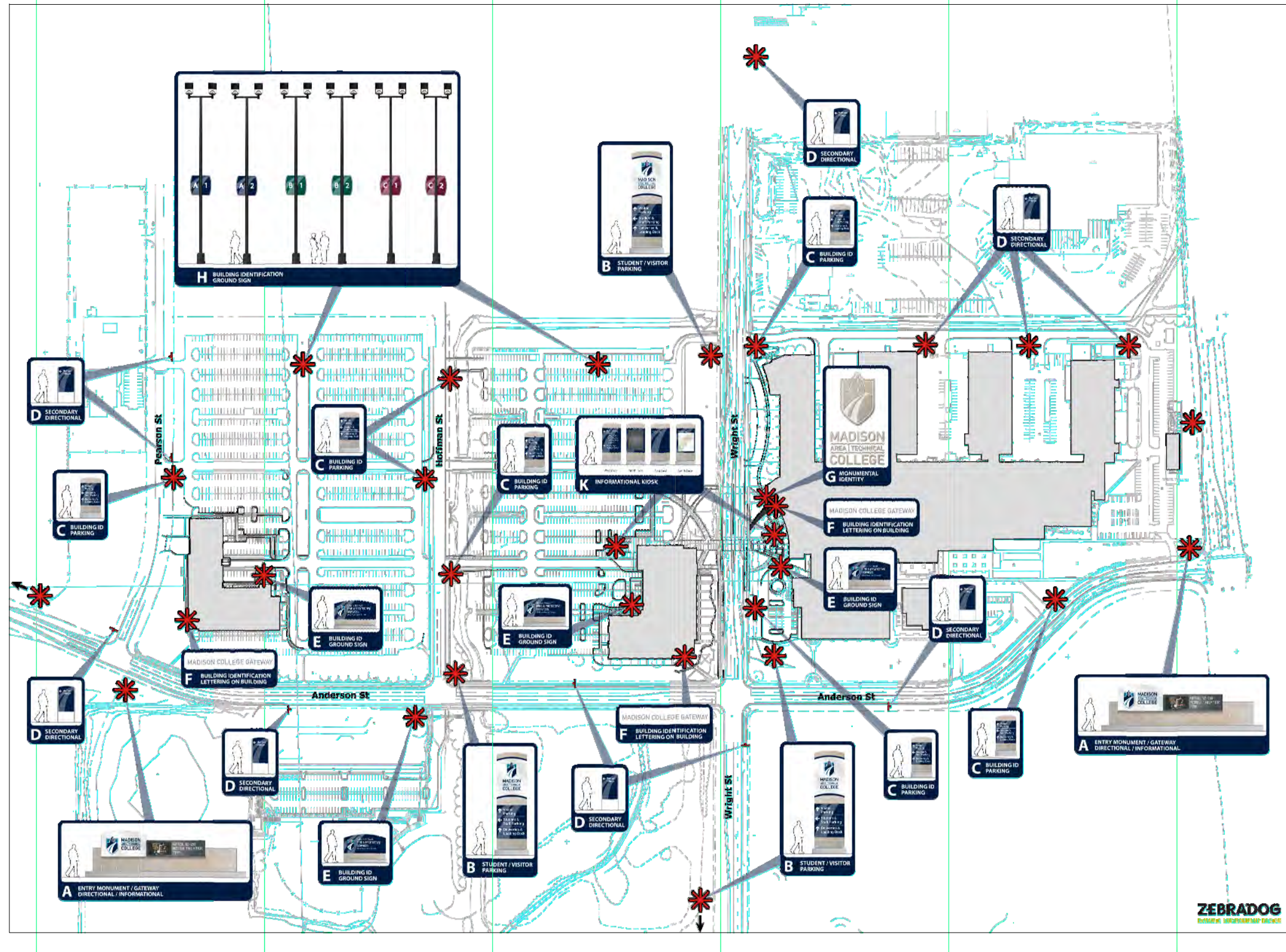
Conservation Design Forum
375 West First Street
Erlanger, Illinois 60126
630.559.2000 Phone
630.559.2030 Fax
www.cdfinc.com

DRAWING
PHOTOMETRIC PLAN



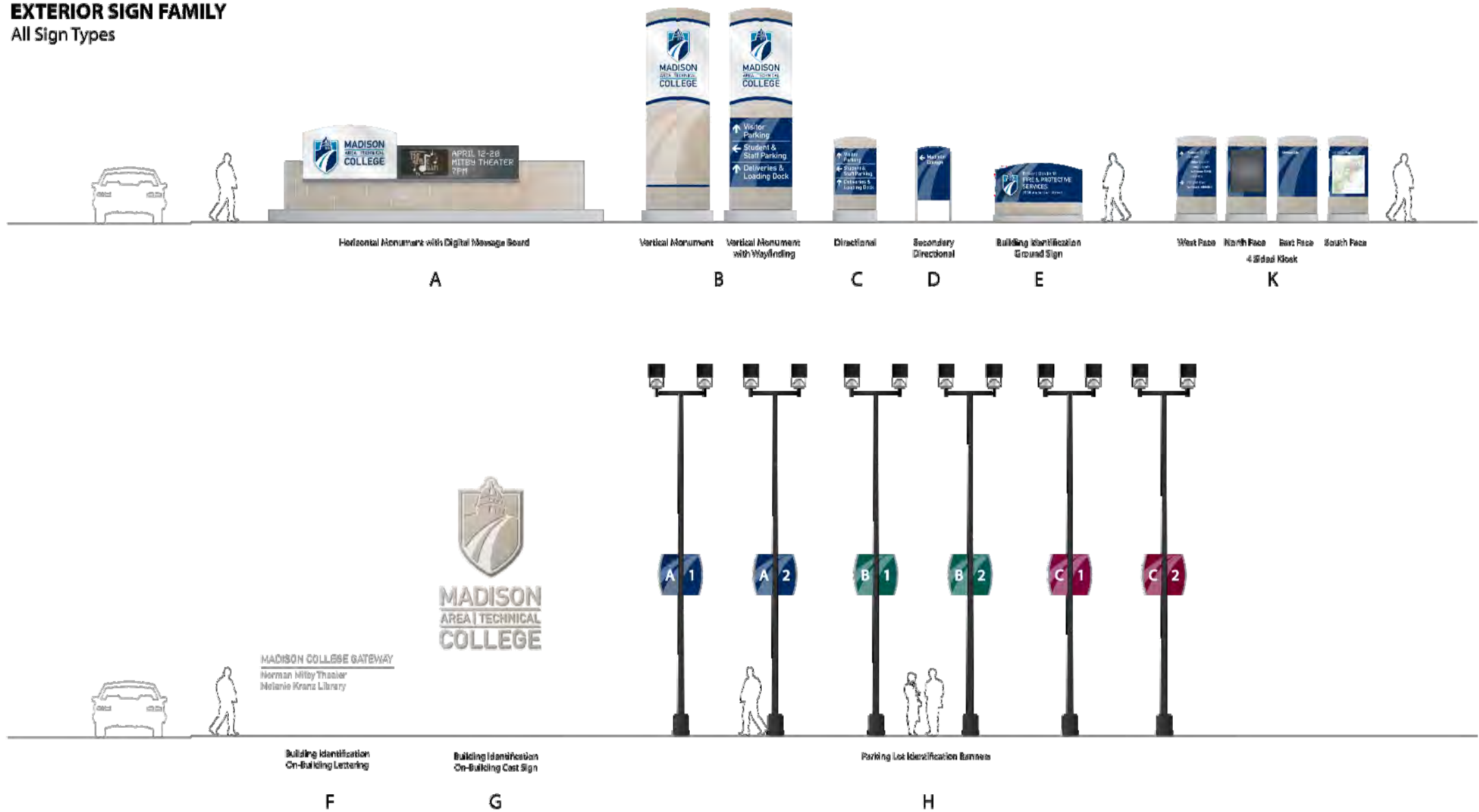
Sheet Number

LP-601



File: P:\2400\2434-MATC\LP-701-Heifling.dwg Layout: LP-701 User: bmcrow Plotted: May 03, 2011 - 9:13pm

EXTERIOR SIGN FAMILY
All Sign Types



ZEBRADOG | **MADISON COLLEGE**
DYNAMIC ENVIRONMENT DESIGN | Exterior Signage - Concept Development 04.01.11

1



Project Title

Truax
HEB

City of Madison,
Wisconsin

Issued For:	Approval
Issue Date:	05/04/2011
SAA Project No.	2434
MC Project No.	-
Bid Pkg No.	B11-025

Revision	Date
----------	------



SAA Design Group, Inc.
717 John Nolen Drive
Madison, WI 53713
Ph. 608.255.0800
Fx. 608.255.7750
www.saa-madison.com



Conservation Design Forum
375 West First Street
Eau Claire, WI 54601
630.559.2000 Phone
630.559.2030 Fax
www.cdfinc.com

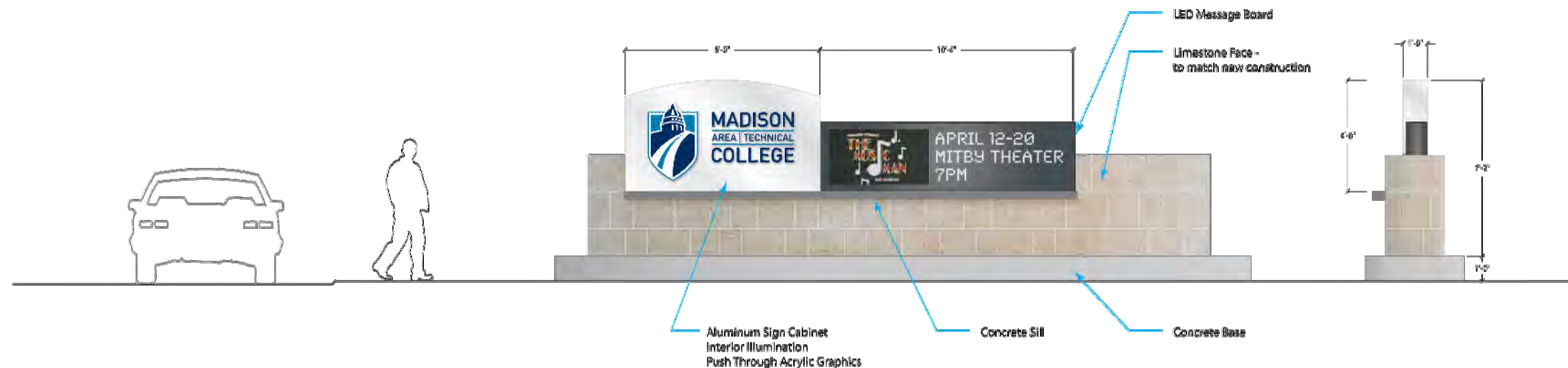
DRAWING

SIGN FAMILY

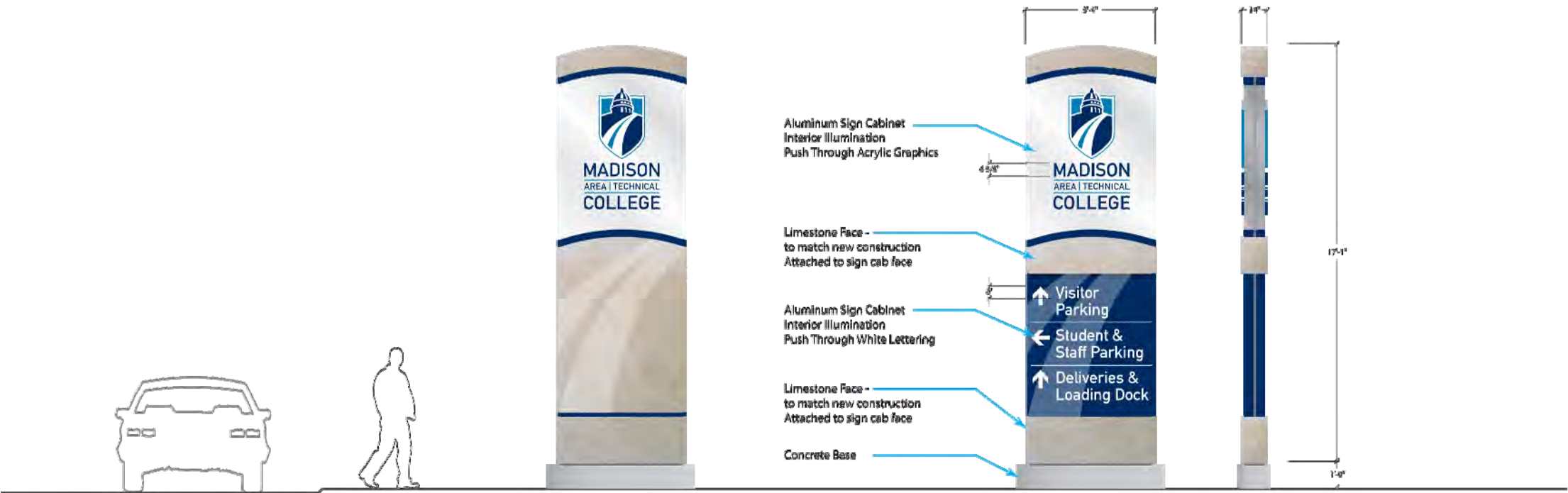
Sheet Number

LP-701

SIGN TYPE A
Horizontal Monument



SIGN TYPE B
Vertical Monument &
Vertical Monument with Wayfinding Directional



ZEBRADOG | **MADISON COLLEGE**
DYNAMIC ENVIRONMENT DESIGN | Exterior Signage - Concept Development 04.01.11

3



Project Title

Truax
HEB

City of Madison,
Wisconsin

Issued For:	Approval
Issue Date:	05/04/2011
SAA Project No.	2434
MC Project No.	-
Bid Pkg No.	B11-025

Revision	Date



Conservation Design Forum
375 West First Street
Evanston, Illinois 60126
630.559.2000 Phone
630.559.2030 Fax
www.cdfinc.com

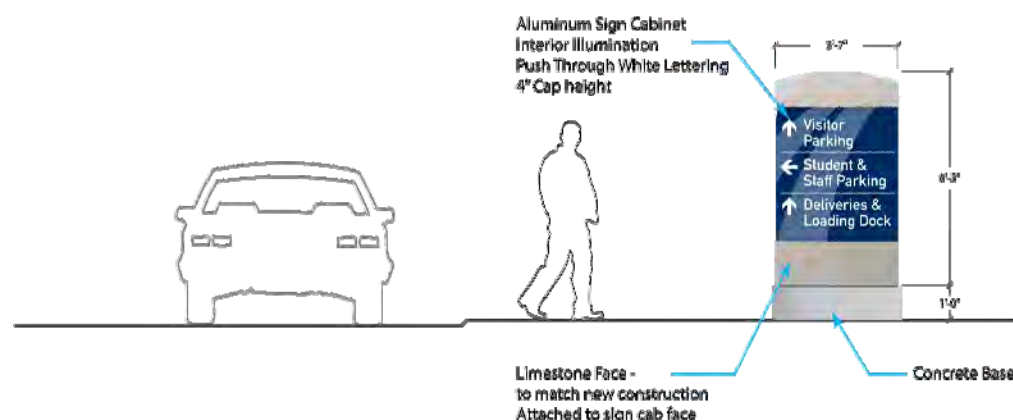
DRAWING
SIGN DETAILS

Sheet Number

LP-703

SIGN TYPE C

Directional



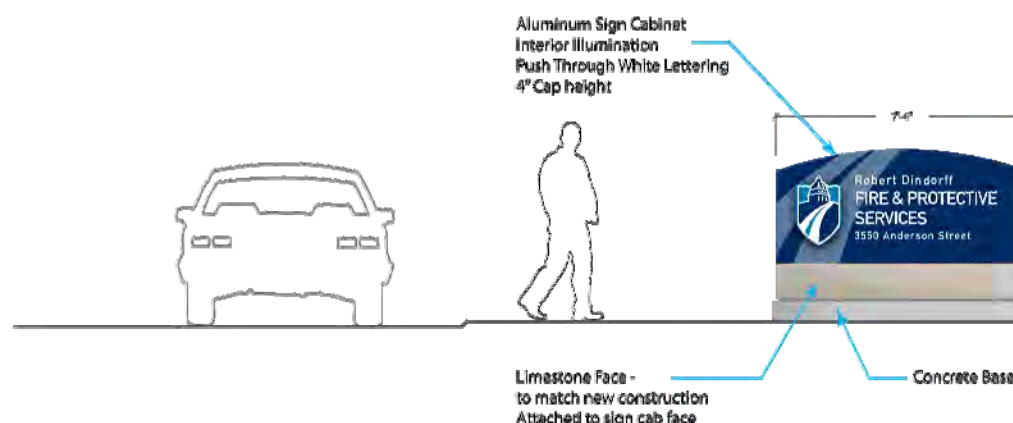
SIGN TYPE D

Secondary Directional



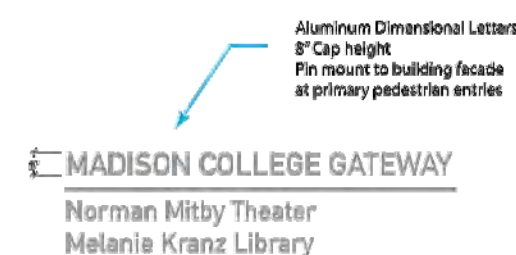
SIGN TYPE E

Building Identification
Ground Sign



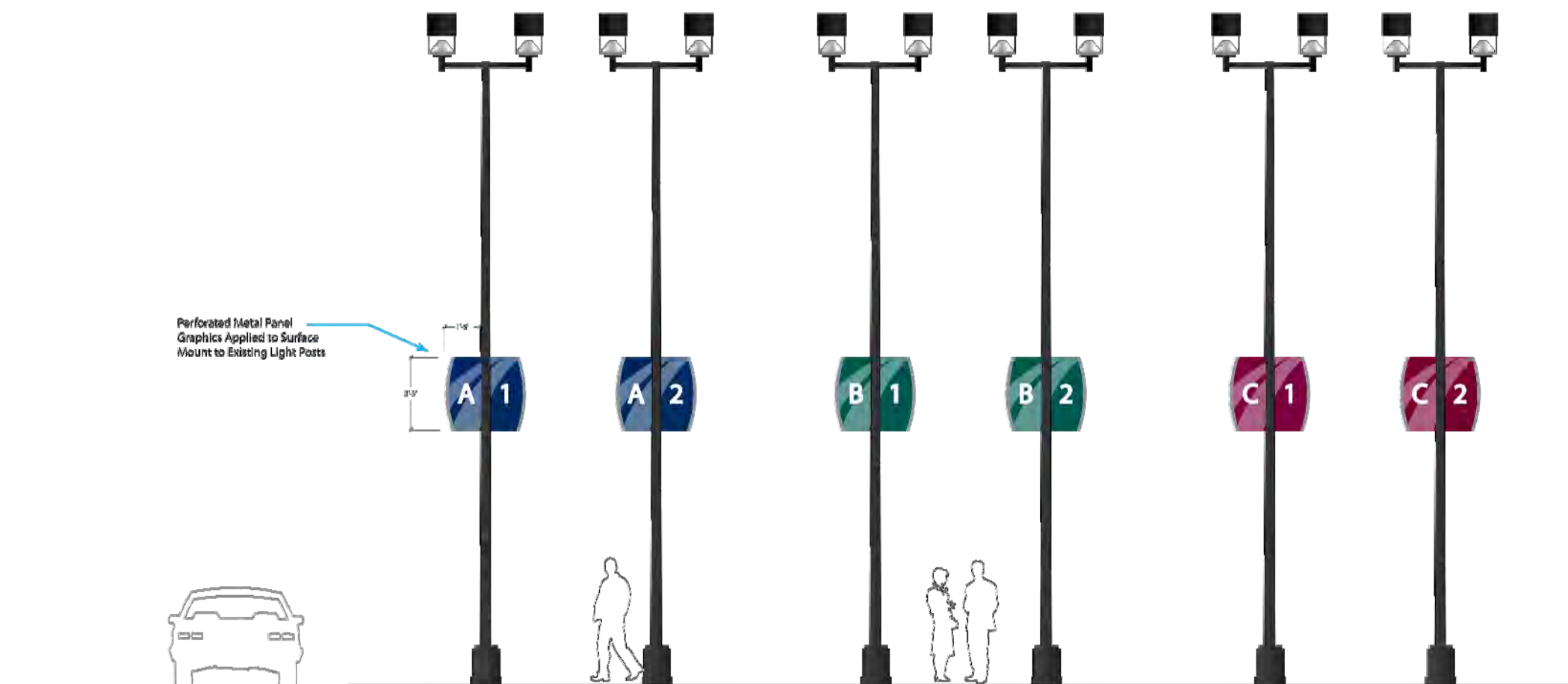
SIGN TYPE F

Building Identification
Lettering On Building



SIGN TYPE H

Parking Lot Banner System



File: P:\2400\2434-MATC\LS-MATC\LS-MATC\LP-707 User: bmcnew Plotted: May 03, 2011 - 9:18pm Layout: LP-707

SIGN TYPE K
4 Sided Pedestrian Kiosk



Project Title

Truax
HEB

City of Madison,
Wisconsin

Issued For:	Approval
Issue Date:	05/04/2011
SAA Project No.	2434
MC Project No.	-
Bid Pkg No.	B11-025

Revision	Date



Conservation Design Forum
375 West First Street
Eau Claire, WI 54601
630.559.2000 Phone
630.559.2030 Fax
www.cdfinc.com

DRAWING
SIGN DETAILS

Sheet Number

LP-707