

APPLICATION FOR
URBAN DESIGN COMMISSION
REVIEW AND APPROVAL

AGENDA ITEM # _____
Project # _____
Legistar # 22181

DATE SUBMITTED: April 20, 2011

Action Requested

☐ Informational Presentation

☐ Initial Approval and/or Recommendation

UDC MEETING DATE: April 27, 2011

☒ Final Approval and/or Recommendation

PLEASE PRINT!

PLEASE PRINT!

PROJECT ADDRESS: 1702 Wright ST, Madison Wisconsin 53704

ALDERMANIC DISTRICT: District 17

OWNER/DEVELOPER (Partners and/or Principals)
Madison Area Technical College

ARCHITECT/DESIGNER/OR AGENT:
Zimmerman Architectural Studios

3550 Anderson Street

2122 West Mt. Vernon Avenue

Madison, Wisconsin 54704

Milwaukee, Wisconsin 53233

CONTACT PERSON: Doug Barnes

Address: 2122 West Mt. Vernon Avenue

Milwaukee, Wisconsin 53233

Phone: 414.918.1461

Fax: 414.302.3738

E-mail address: Doug.Barnes@zastudios.com

TYPE OF PROJECT:

(See Section A for:)

☐ Planned Unit Development (PUD)

☐ General Development Plan (GDP)

☐ Specific Implementation Plan (SIP)

☐ Planned Community Development (PCD)

☐ General Development Plan (GDP)

☐ Specific Implementation Plan (SIP)

☐ Planned Residential Development (PRD)

☐ New Construction or Exterior Remodeling in an Urban Design District * (A public hearing is required as well as a fee)

☒ School, Public Building or Space (Fee may be required)

☐ New Construction or Addition to or Remodeling of a Retail, Hotel or Motel Building Exceeding 40,000 Sq. Ft.

☐ Planned Commercial Site

(See Section B for:)

☐ New Construction or Exterior Remodeling in C4 District (Fee required)

(See Section C for:)

☐ R.P.S.M. Parking Variance (Fee required)

(See Section D for:)

☐ Comprehensive Design Review* (Fee required)

☐ Street Graphics Variance* (Fee required)

☐ Other _____

*Public Hearing Required (Submission Deadline 3 Weeks in Advance of Meeting Date)

Where fees are required (as noted above) they apply with the first submittal for either initial or final approval of a project.



Madison College Allied Health Building

View from the East-Northeast



Site features (such as terrace and walkways, parking lots, etc.) and exact location (distance from streets) do not reflect SAA design. (Typical)

Madison College Allied Health Building

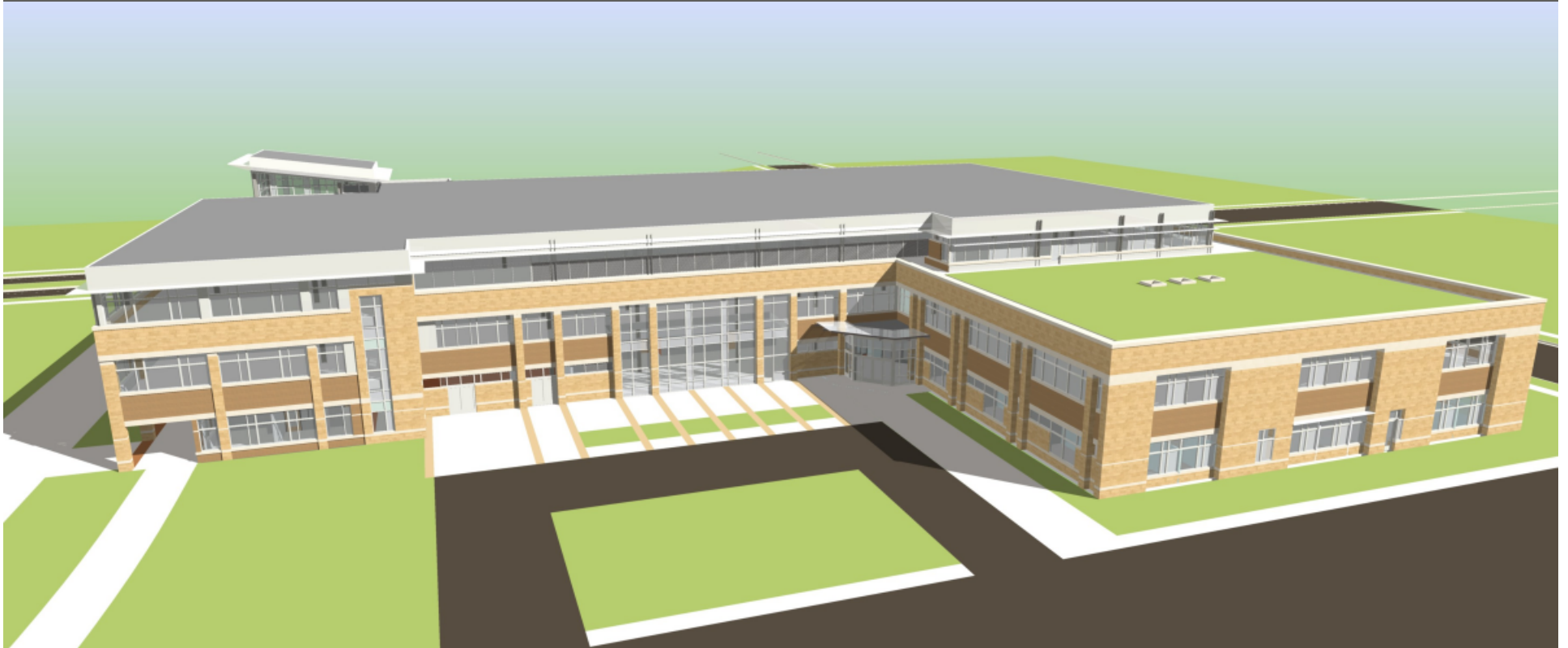
View from the Northwest



Site features (such as terrace and walkways, parking lots, etc.) and exact location (distance from streets) do not reflect SAA design. (Typical)

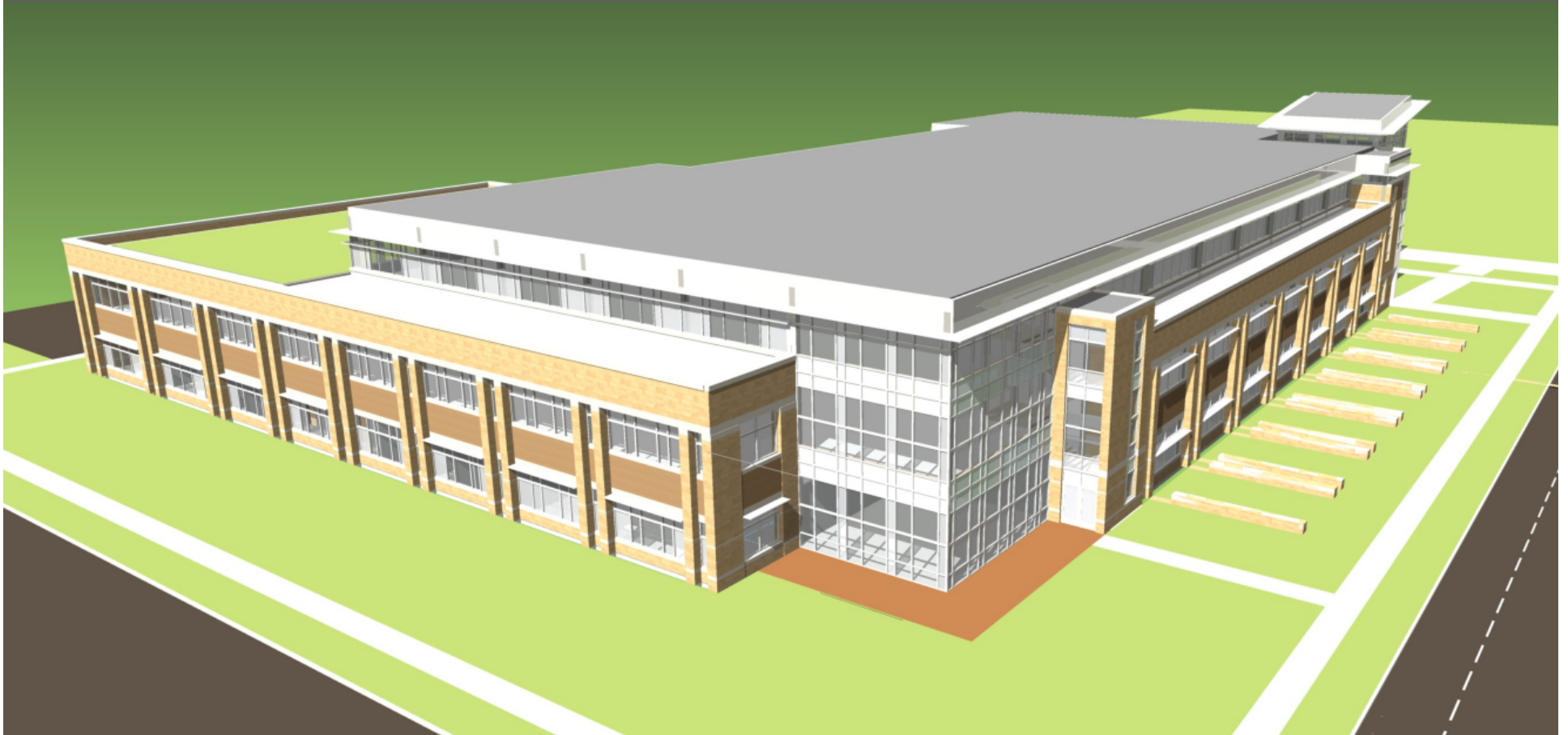
Madison College Allied Health Building

View from the West



Site features (such as terrace and walkways, parking lots, etc.) and exact location (distance from streets) do not reflect SAA design. (Typical)

April 19, 2011



Madison College Allied Health Building

View from the Southeast







Madison College Allied Health Building

View from the Northwest



Site features (such as terrace and walkways, parking lots, etc.) and exact location (distance from streets) do not reflect SAA design. (Typical)

April 19, 2011



View from the West

Clinic Entry



zimmerman
ARCHITECTURAL STUDIOS, INC.

Madison College Allied Health Building