



LITTLE STREET

MONROE STREET

SW BIKE PATH

REGENT STREET

REGENT STREET

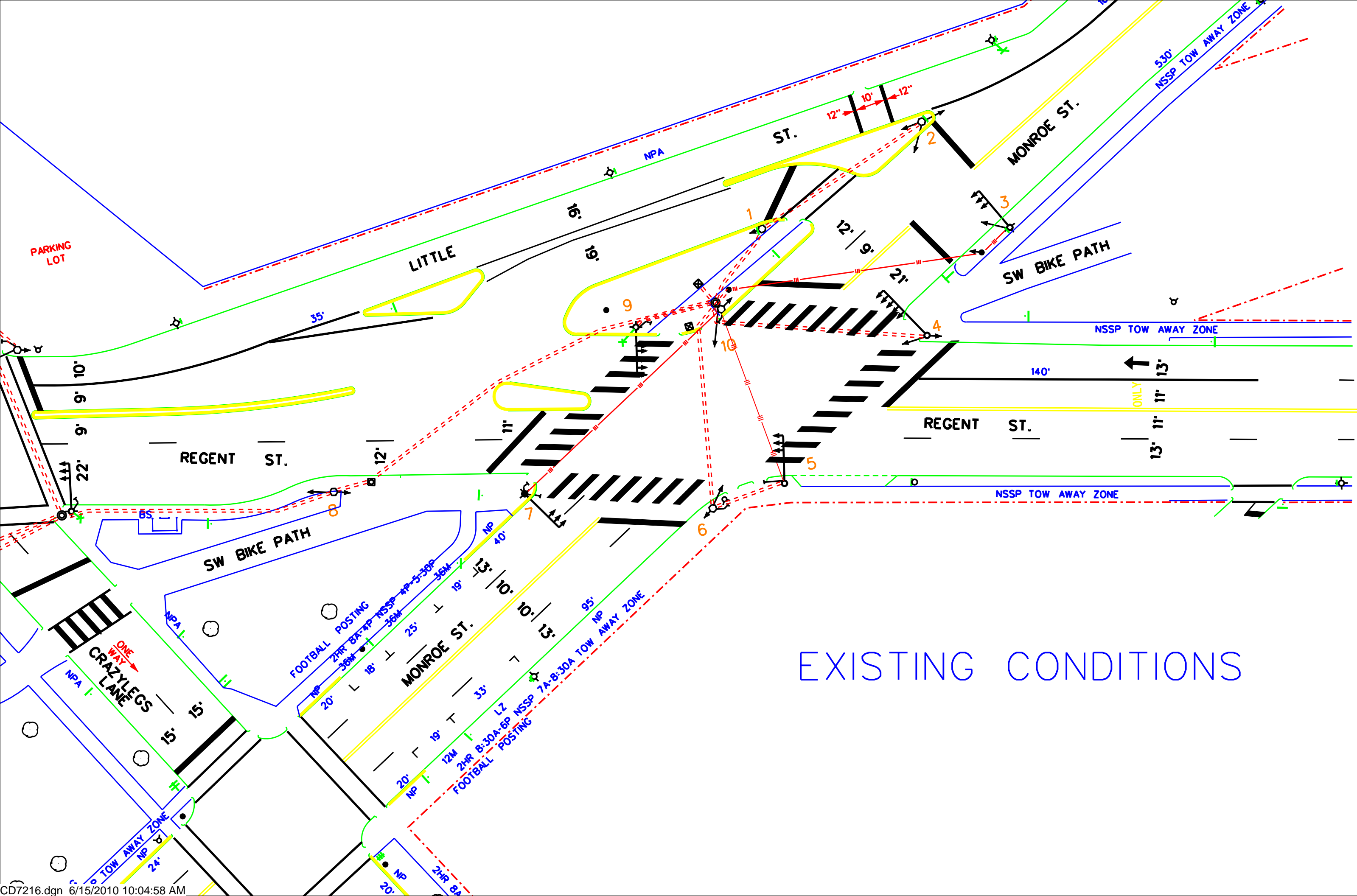
SW BIKE PATH

CRAZY LEGS LANE

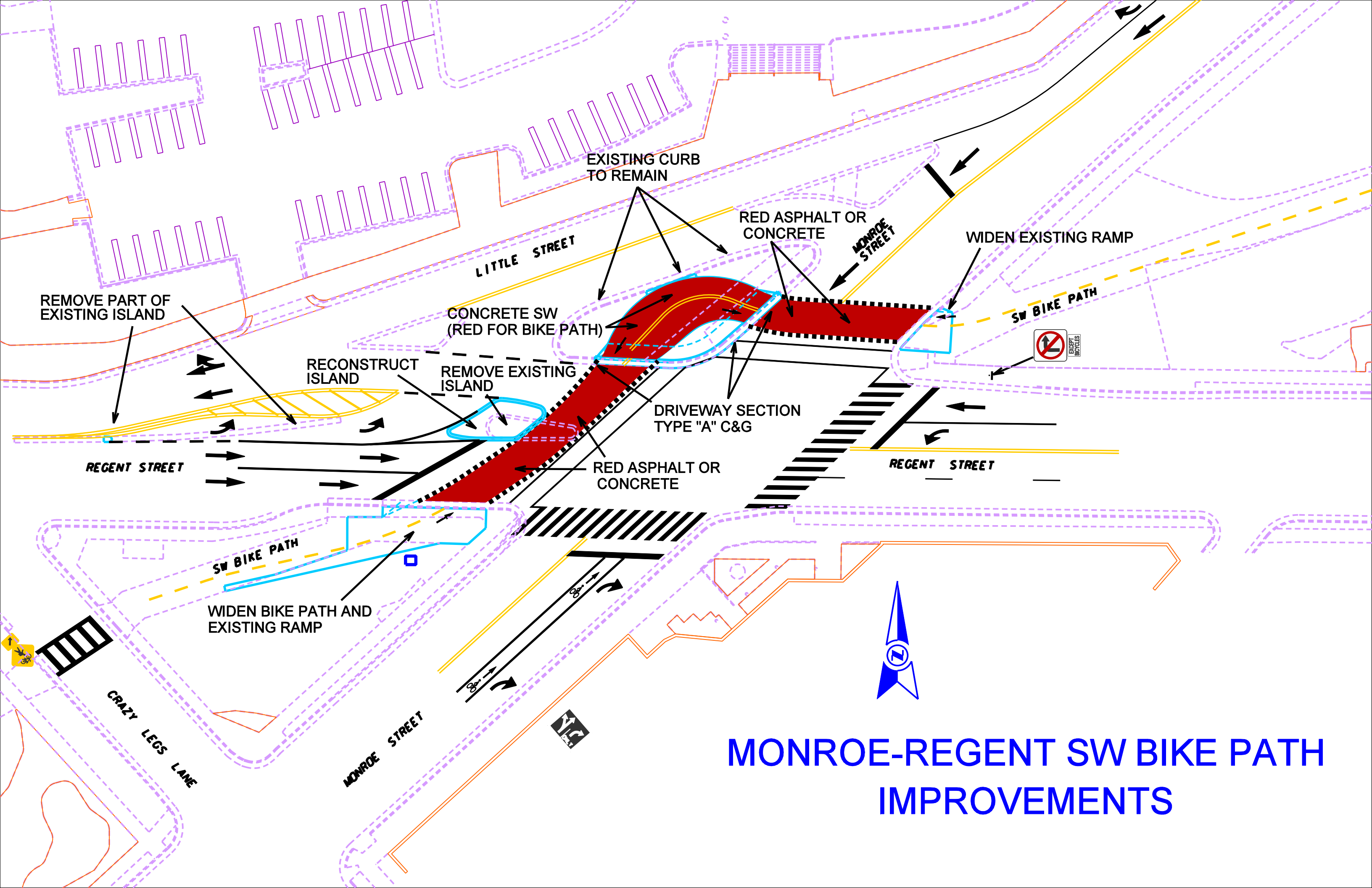


AERIAL PHOTO





EXISTING CONDITIONS



REMOVE PART OF EXISTING ISLAND

EXISTING CURB TO REMAIN

RED ASPHALT OR CONCRETE

WIDEN EXISTING RAMP

RECONSTRUCT ISLAND

CONCRETE SW (RED FOR BIKE PATH)

REMOVE EXISTING ISLAND

DRIVEWAY SECTION TYPE "A" C&G



REGENT STREET

RED ASPHALT OR CONCRETE

REGENT STREET

SW BIKE PATH

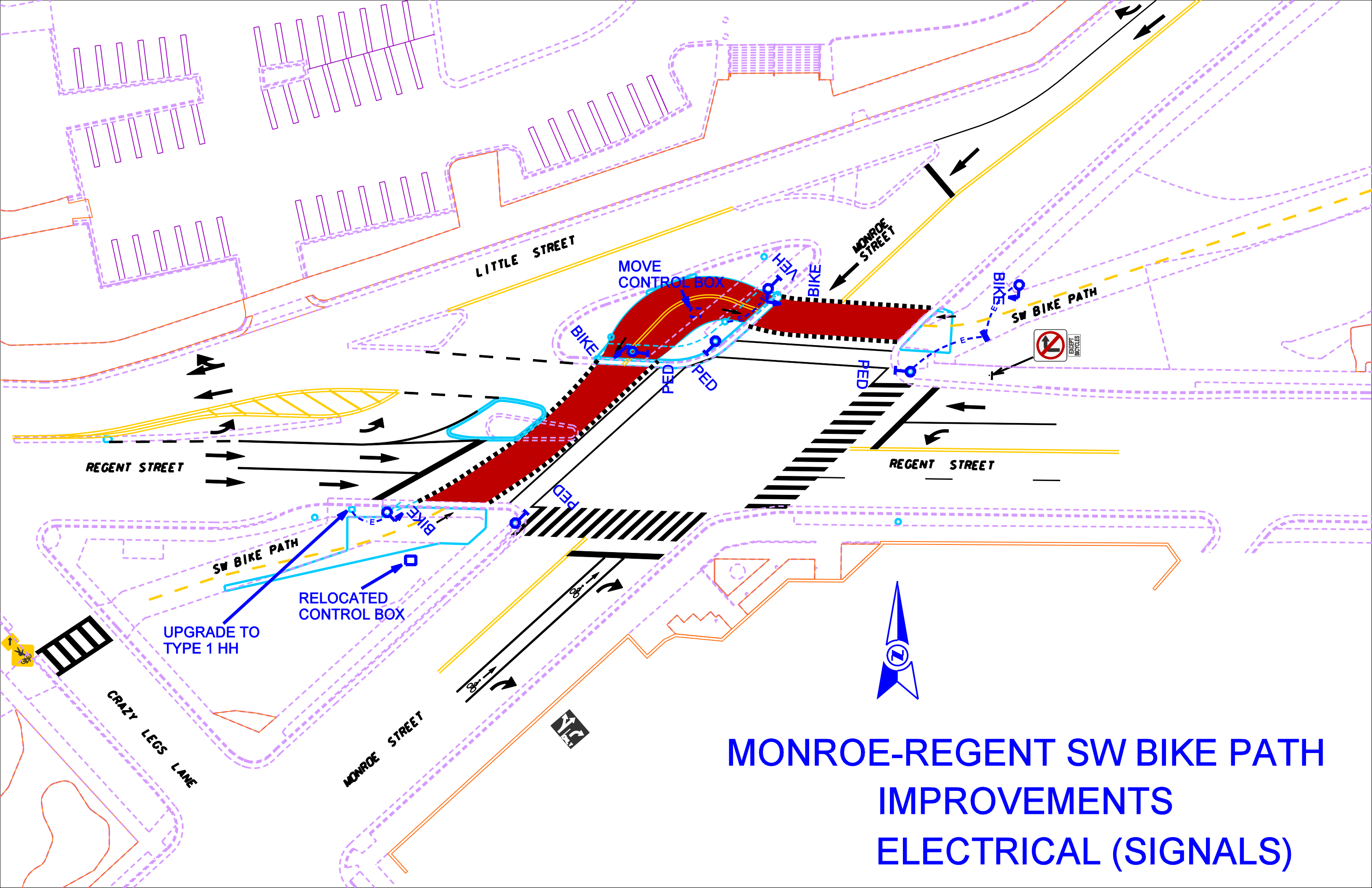
WIDEN BIKE PATH AND EXISTING RAMP

CRAZY LEGS LANE

MONROE STREET

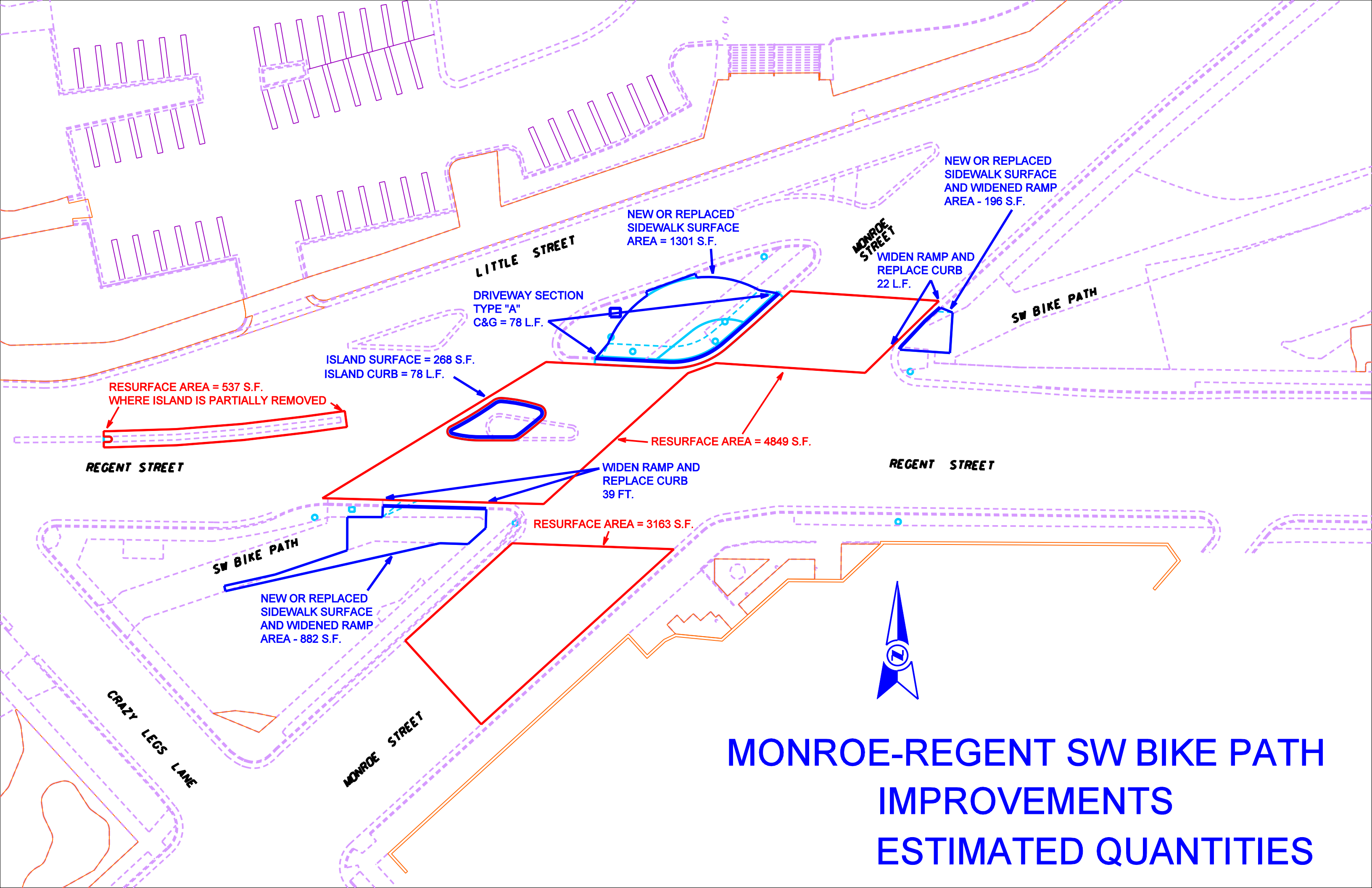


# MONROE-REGENT SW BIKE PATH IMPROVEMENTS



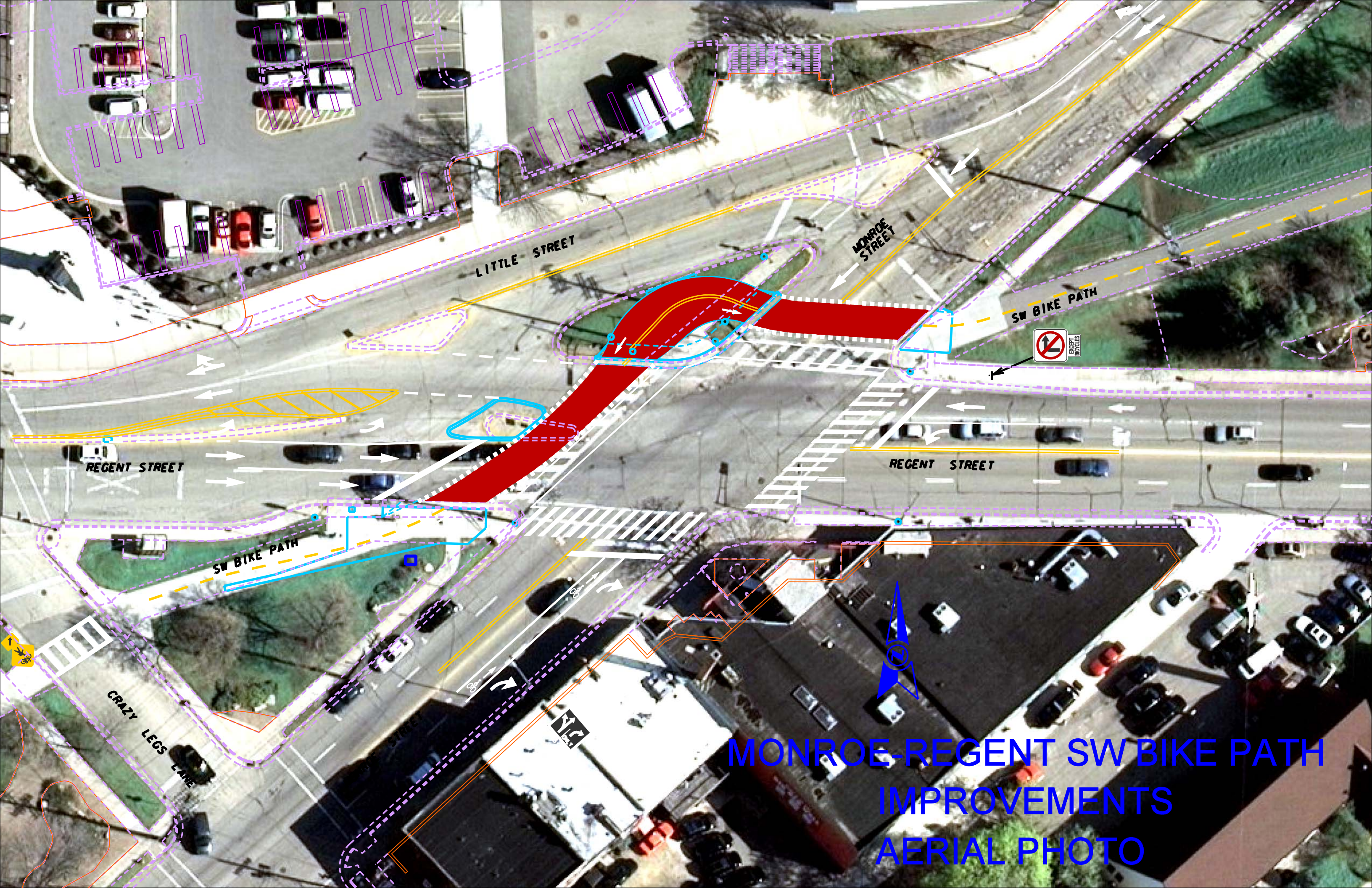
# MONROE-REGENT SW BIKE PATH IMPROVEMENTS ELECTRICAL (SIGNALS)





# MONROE-REGENT SW BIKE PATH IMPROVEMENTS ESTIMATED QUANTITIES





LITTLE STREET

MONROE STREET

SW BIKE PATH

REGENT STREET

REGENT STREET

SW BIKE PATH

CRAZY LEGS LANE



MONROE-REGENT SW BIKE PATH  
IMPROVEMENTS  
AERIAL PHOTO

