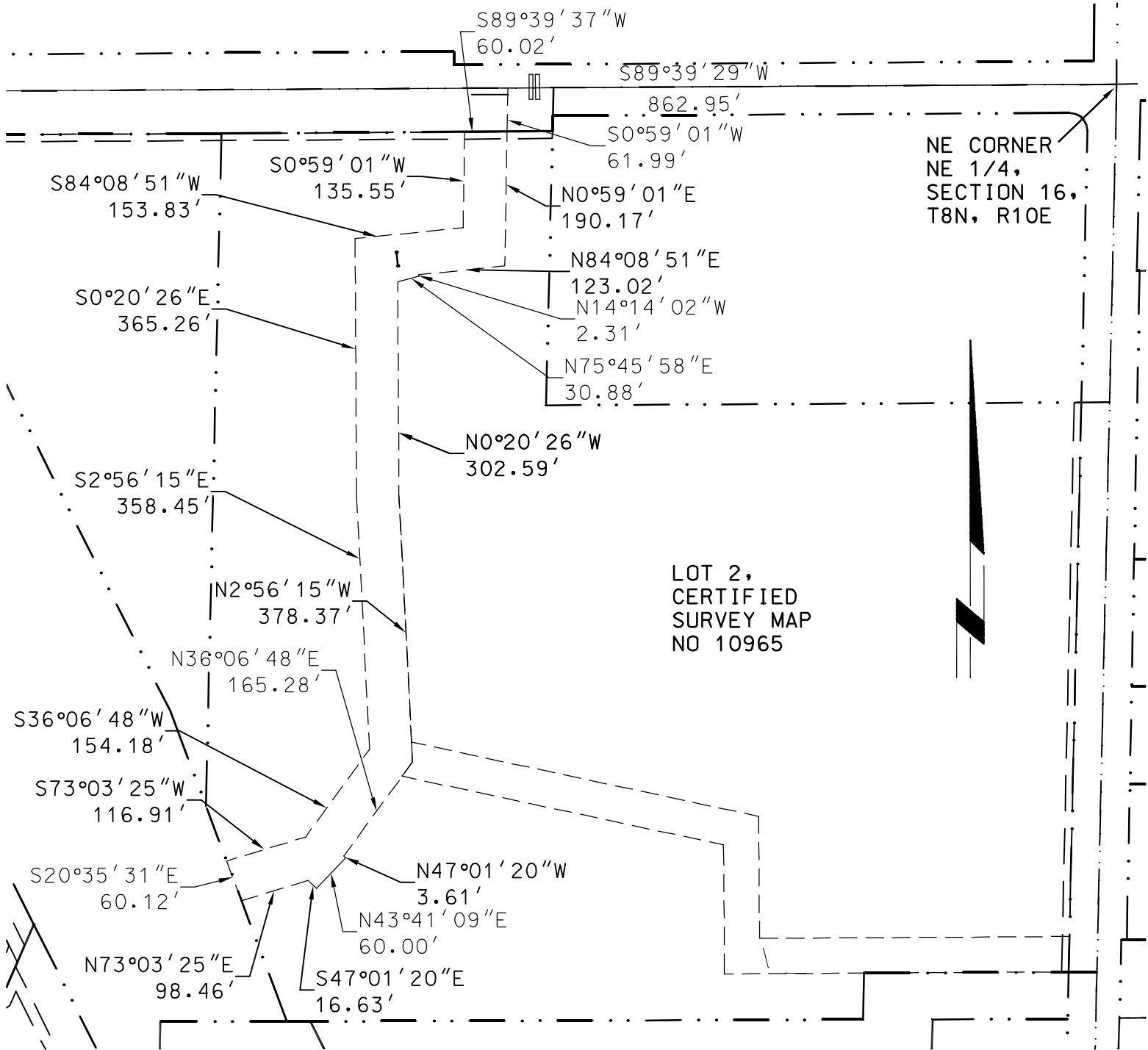
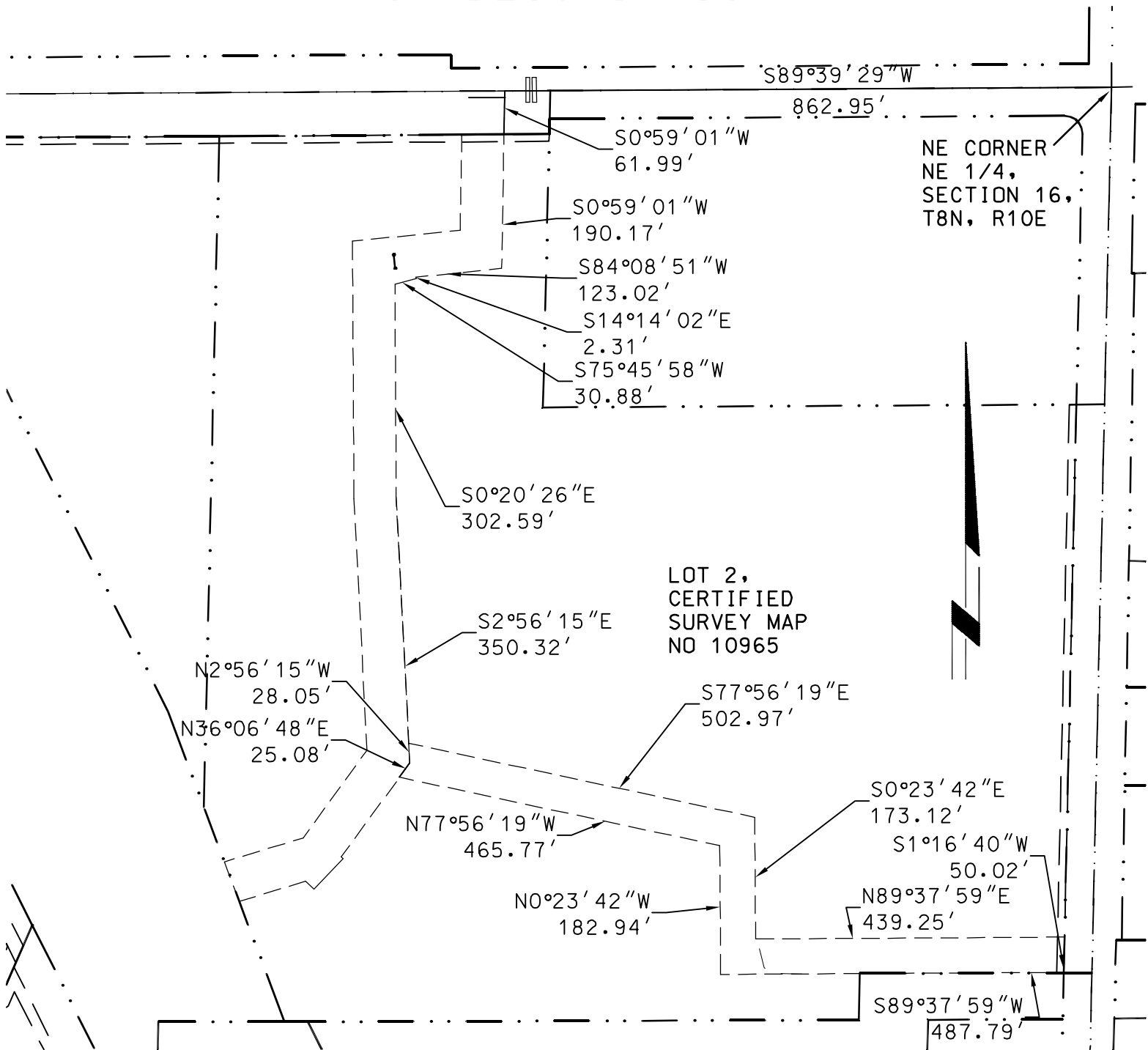


MAP OF DESCRIPTION

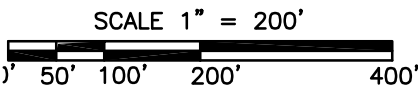


MAP OF DESCRIPTION



50' WIDE TEMPORARY
CONSTRUCTION EASEMENT

DECEMBER 8, 2008



GRID NORTH
All bearings are
referenced to the north
line of the NE 1/4,
Section 16, T8N, R10E.
Recorded as S89°39'29"W.

CITY OF MADISON
ENGINEERING
DIVISION - RM 115
210 MARTIN LUTHER
KING JR BLVD
MADISON, WI 53703



**ARNOLD AND
O'SHERIDAN INC**

CONSULTING ENGINEERS

MADISON, WISCONSIN
(608) 821-8500
BROOKFIELD, WISCONSIN
(262) 783-6130
WWW.ARNOLDANDOSHERIDAN.COM

PROJECT
NUMBER:
060291