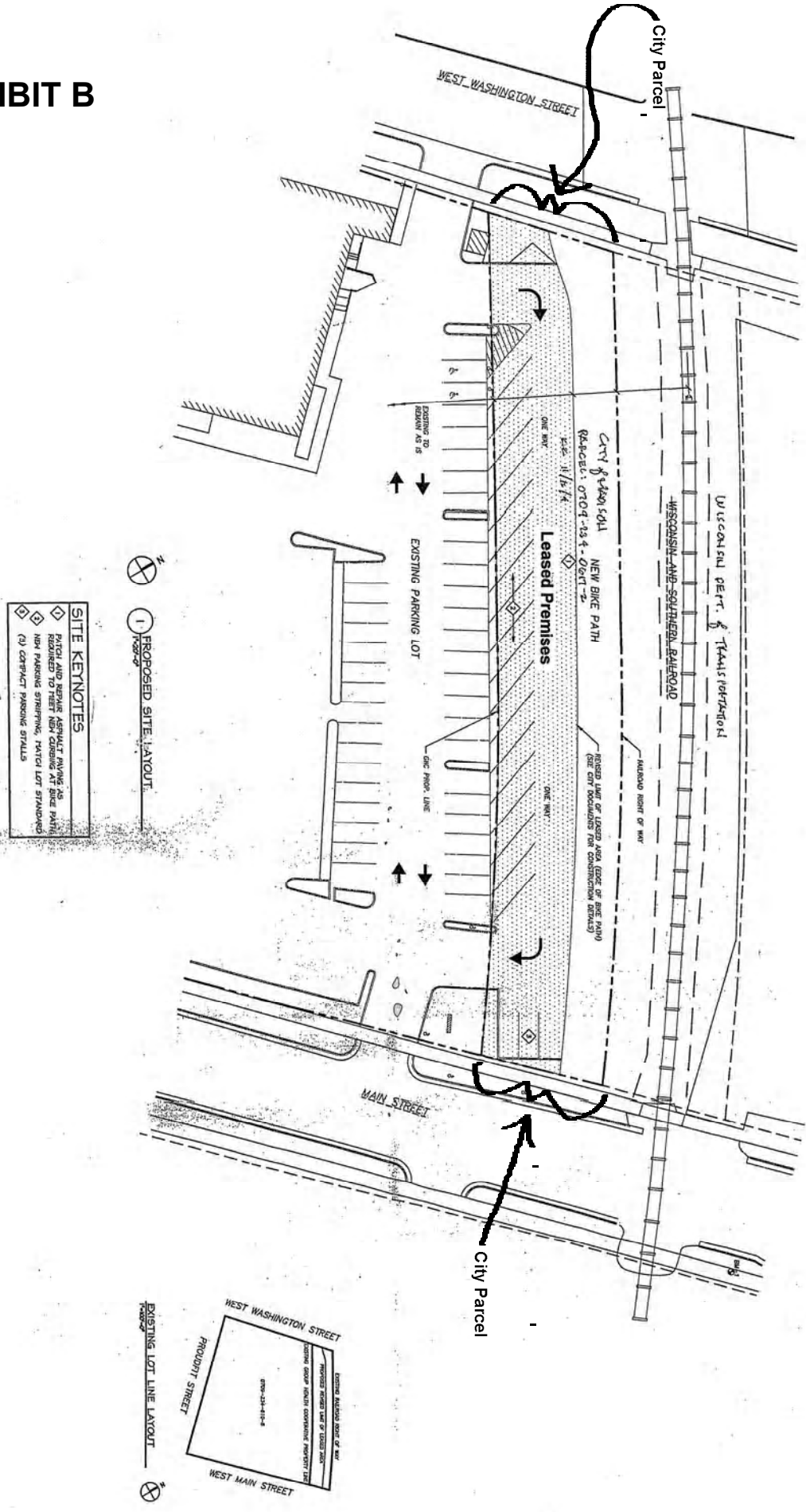


EXHIBIT B



SITE KEYNOTES
 (1) PROPOSED SITE LAYOUT
 (2) EXISTING SPACES



MS

DATE	October 11, 2004
DRAWN BY	RC
REVIEWED BY	JCH
PROJECT NO.	0344
DATE	
SCALE	

PARKING LOT REMODEL
GHC CAPITOL CLINIC
 675 W. WASHINGTON AVE.
 MADISON, WISCONSIN 53703

Bouril Design Studio, LLC
 architects

200 Grand Tower Plaza, 8th Floor, Madison, WI 53703-1001
 Phone: (608) 233-2400 Fax: (608) 633-3408
 Email: bouril@bourilstudio.com

THE DESIGN REPRESENTED BY THIS DRAWING IS THE PROPERTY OF BOURIL DESIGN STUDIO, LLC. THESE DRAWINGS, WHETHER PRINTED OR IN ELECTRONIC FORMAT, MAY NOT BE COPIED OR REPRODUCED IN ANY FORM WITHOUT THE WRITTEN CONSENT OF BOURIL DESIGN STUDIO, LLC OF MADISON, WISCONSIN.