

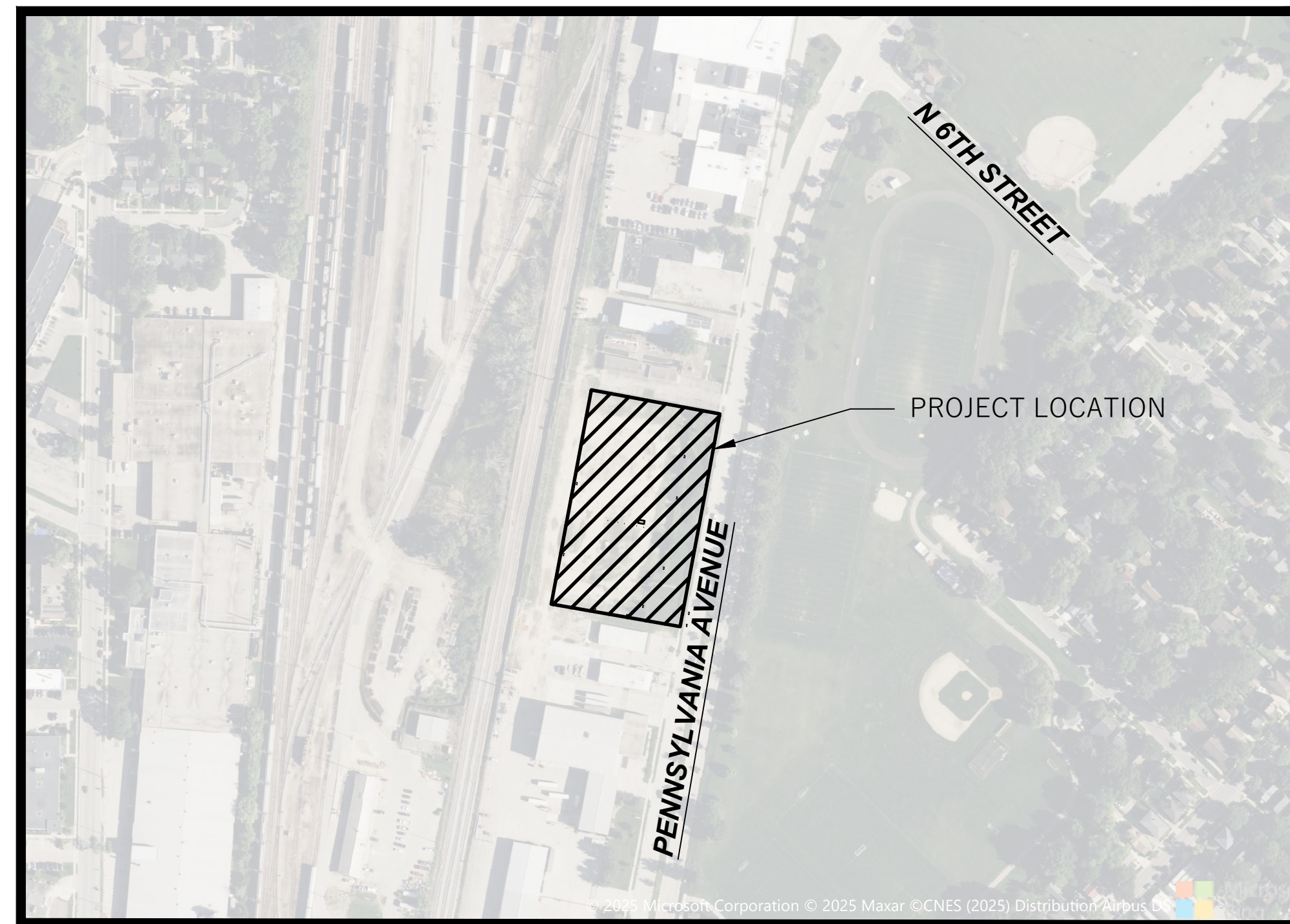
# 2230 PENNSYLVANIA AVENUE PARKING LOT CONSTRUCTION

CITY OF MADISON  
DANE COUNTY, WISCONSIN  
MARCH 2025

## DRAWING INDEX

## SITE IMPROVEMENT SHEETS

C000	TITLE SHEET
V001	EXISTING CONDITIONS SURVEY
C100	SITE PLAN
C200	GRADING & EROSION CONTROL PLAN
C201	DETAIL GRADING PLAN
C202	DETAIL GRADING PLAN
C300	UTILITY PLAN
C400	DETAILS
	LANDSCAPE PLAN



PROJECT AREA

SCALE: 1"=250'



<b>Revisions:</b>					
No.	Date:	Description:			
Graphic Scale	 0'      125'      250'      375'				
Wyser Number	23-1081				
Set type	REVIEW				
Date issued	03/27/2025				
Sheet Number	C000				





1. UNDERLYING SITE CONTOURS AND INFORMATION BASED ON TOPOGRAPHIC & UTILITY DATA AS SURVEYED BY WYSER ENGINEERING ON JUNE 12 AND 13, 2023. WYSER ENGINEERING SHALL BE RESPONSIBLE FOR ANY ERRORS OR OMISSIONS THAT MAY ARISE AS A RESULT OF ERRONEOUS OR INCOMPLETE INFORMATION PROVIDED BY OTHERS. CONTRACTOR TO CONFIRM ALL ELEVATIONS, GENERAL DRAINAGE AND EARTHWORK REQUIREMENTS PRIOR TO CONSTRUCTION.
2. THE BENCHMARK LOCATIONS ARE SHOWN FOR REFERENCE ONLY ON THIS PLAN. THE BENCHMARKS SHALL BE VALIDATED BY LICENSED LAND SURVEYOR PRIOR TO CONSTRUCTION. CONTRACTOR ASSUMES RISK ASSOCIATED WITH BENCHMARK ELEVATIONS UNTIL CONFIRMED.
3. CONTRACTOR TO OBTAIN APPROPRIATE PERMITS FOR STREET OPENINGS & TO WORK WITHIN THE CITY'S LAND AND EASEMENTS AS REQUIRED.
4. WYSER ENGINEERING SHALL BE HELD HARMLESS AND DOES NOT WARRANT ANY DEVIATIONS BY THE OWNER OR CONTRACTOR FROM THE APPROVED CONSTRUCTION PLANS THAT MAY RESULT IN DISCIPLINARY ACTIONS BY REGULATORY AGENCIES.
5. IF ANY ERRORS, DISCREPANCIES, OR OMISSIONS WITHIN THE PLAN BECOME APPARENT IT SHALL BE BROUGHT TO THE ATTENTION OF THE ENGINEER PRIOR TO CONSTRUCTION SO THAT CLARIFICATION OR REDESIGN MAY OCCUR.
6. ALL MUNICIPAL UTILITY CONNECTIONS, WORK IN ROW, PUBLIC OUTCUTS AND PUBLIC EASEMENTS SHALL BE IN ACCORDANCE WITH CITY OF MADISON STANDARD SPECIFICATIONS FOR LOCAL PUBLIC WORKS CONSTRUCTION AND SEPARATE PLANS ISSUED BY THE CITY OF MADISON.

MAXIMUM LOT COVERAGE 75%

[illegible]

PENNSYLVANIA AVENUE PARKING LOT

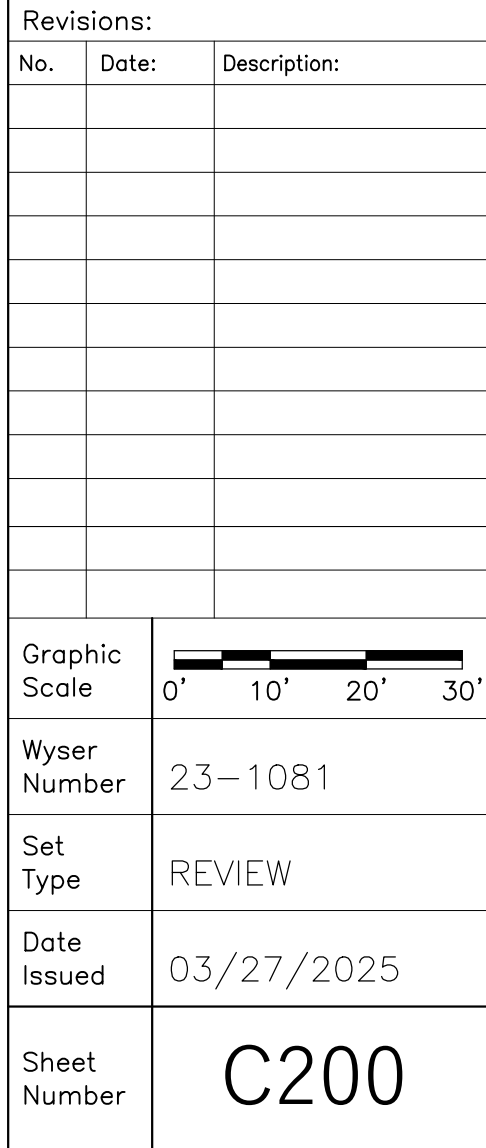
CITY OF MADISON, DANE COUNTY, WI

Sheet Title: SITE PLAN

2230 PENNSYLVANIA AVENUE  
MADISON, WI 53704

WYSER  
ENGINEERING

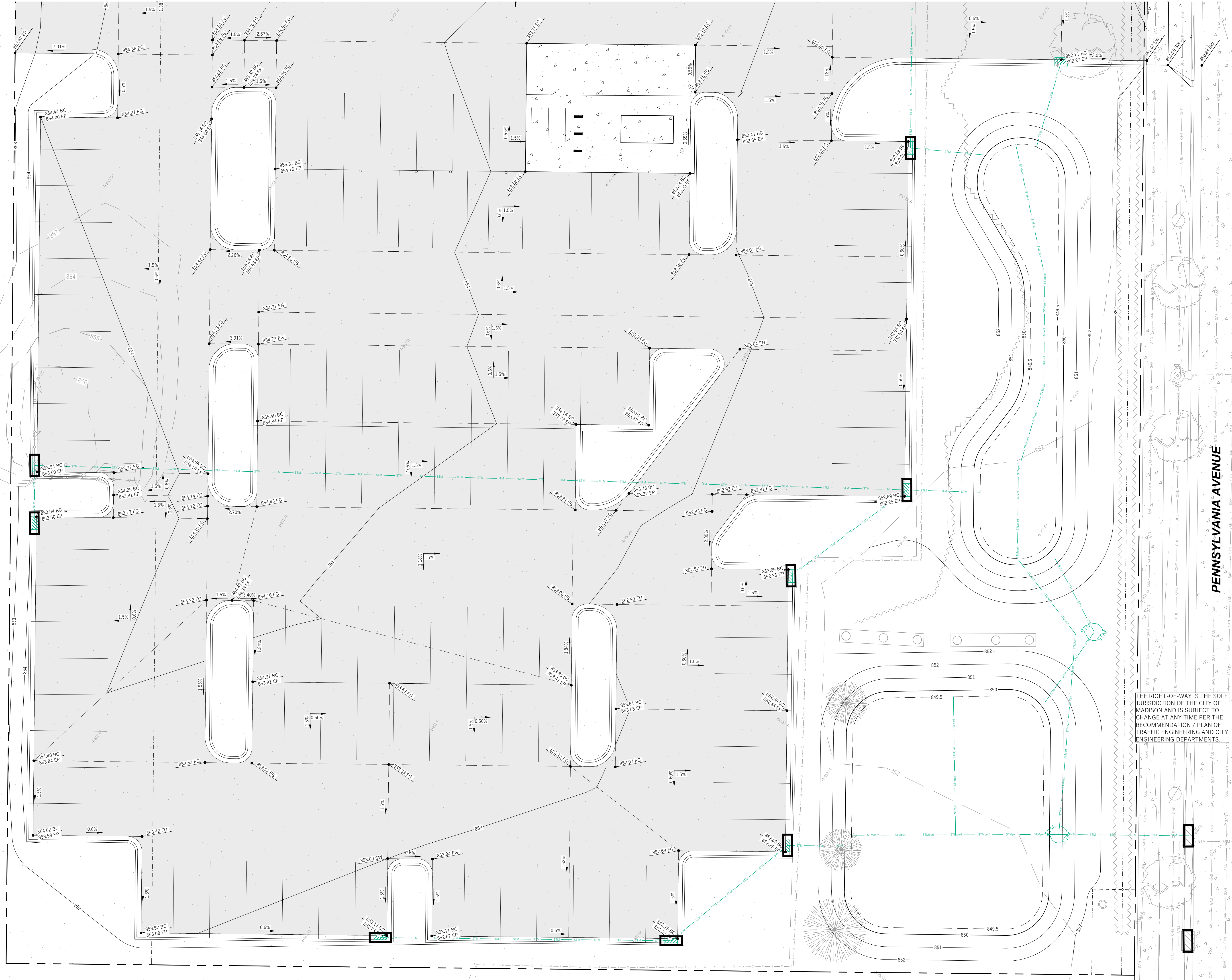






**LEGEND (PROPOSED)**

	PROPERTY BOUNDARY
	EASEMENT
	BUILDING FOOTPRINT
	18" CURB AND GUTTER
	ASPHALT PAVEMENT
	CONCRETE PAVEMENT
	PROPOSED MAJOR CONTOUR
	PROPOSED MINOR CONTOUR
	PROPOSED STORM SEWER
	SPOT GRADE
	DRAINAGE GRADE BREAK
	DRAINAGE ARROW



WYSER  
ENGINEERING

2230 PENNSYLVANIA AVENUE  
MADISON, WI 53704

PENNSYLVANIA AVENUE PARKING LOT

CITY OF MADISON, DANE COUNTY, WI

Sheet Title:

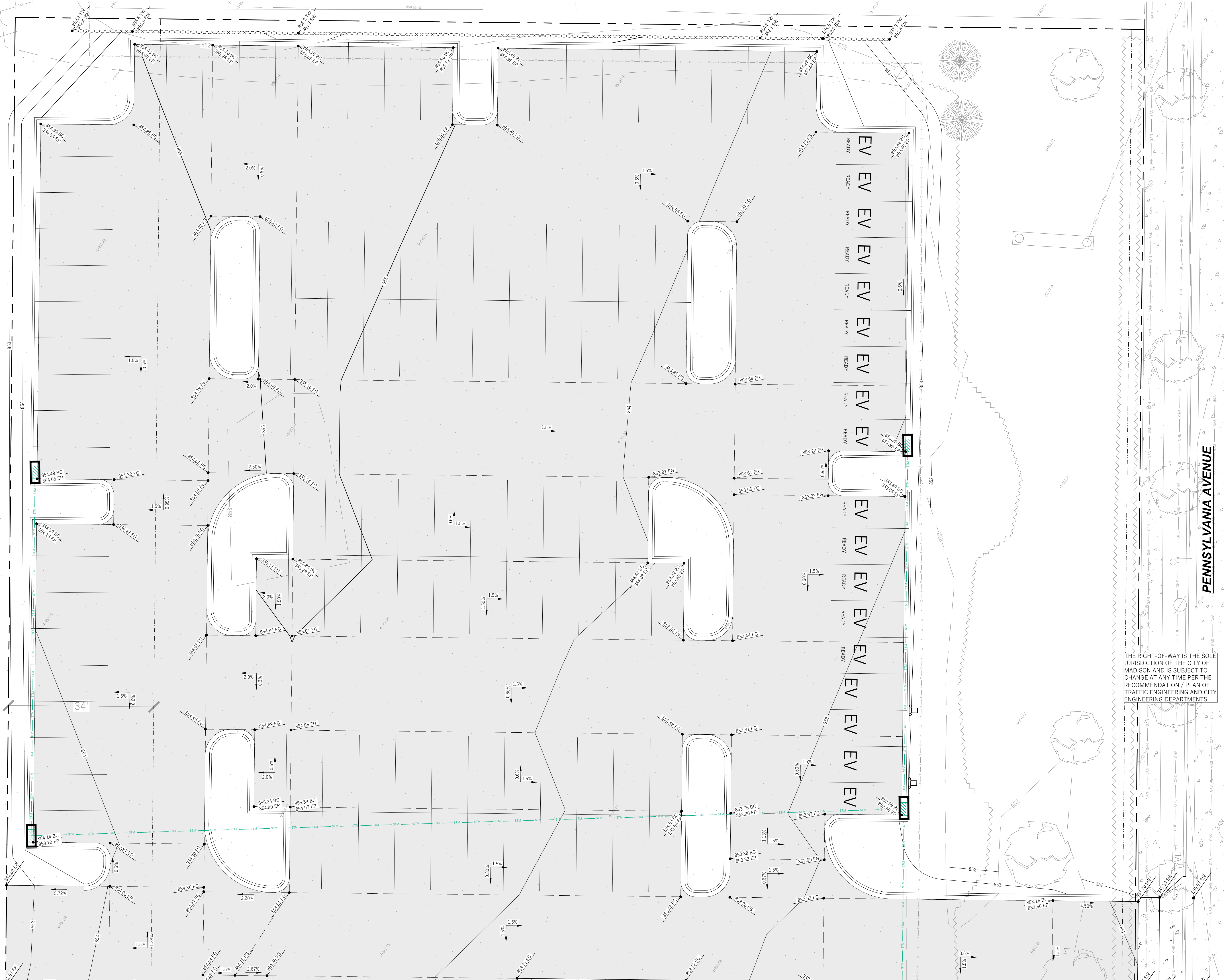
[illegible]



**NOTE:**  
**SPOT GRADES ARE AS FOLLOWS:**  
 FFE - FINISHED FLOOR GRADE  
 EP - EDGE OF ASPHALT PAVEMENT  
 EC - EDGE OF CONCRETE PAVEMENT  
 EG - EDGE OF GRAVEL  
 BC - BACK OF CURB  
 SW - EDGE OF SIDEWALK  
 FG - FINISH GRADE  
 BW - FINISH GRADE ADJACENT BOTTOM OF WALL (NOT FOOTING)

### LEGEND (PROPOSED)

- 
- The diagram shows a cross-section of a road profile with the following layers and features from top to bottom:
- PROPERTY BOUNDARY (dashed line)
  - EASEMENT (dashed line)
  - BUILDING FOOTPRINT (hatched area)
  - 18" CURB AND GUTTER (hatched area)
  - ASPHALT PAVEMENT (hatched area)
  - CONCRETE PAVEMENT (hatched area)
  - PROPOSED MAJOR CONTOUR (solid line, elevation 850)
  - PROPOSED MINOR CONTOUR (solid line, elevation 852)
  - PROPOSED STORM SEWER (dashed line, elevation 851.25 EP)
  - SPOT GRADE (dashed line)
  - DRAINAGE GRADE BREAK (dashed line)
  - DRAINAGE ARROW (arrow pointing down)
- Additional labels include "STM" on the minor contour line and a "1.0%" slope indicator at the bottom.



THE RIGHT-OF-WAY IS THE SOLE JURISDICTION OF THE CITY OF MADISON AND IS SUBJECT TO CHANGE AT ANY TIME PER THE RECOMMENDATION / PLAN OF TRAFFIC ENGINEERING AND CITY ENGINEERING DEPARTMENTS.

WYSER  
ENGINEERING

2230 PENNSYLVANIA AVENUE  
MADISON, WI 53704

PENNSYLVANIA AVENUE PARKING LOT

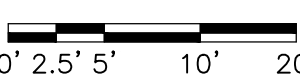
CITY OF MADISON, DANE COUNTY, WI

Sheet Title:  
DETAIL GRADING PLAN

Revisions:

[illegible]

Graphic  
Scale

Wyser  
Number

23-108

Set  
Type

---

Date Issued

C202



34' WIDE EASEMENT BENEFITTING MADISON GAS & ELECTRIC COMPANY FOR OVERHANG OF WIRES AND CABLES AND CROSS-ARMS OF UTILITY POLES AND/OR TOWERS. ADDITIONALLY, NO BUILDING OVER 30 FEET HIGHER THAN THE CURB OF PENNSYLVANIA AVE MAY BE BUILT IN THE EASEMENT AREA, PER DOCUMENT NO. 1179182

EXISTING 63' X 8' HORIZONTAL ELLIPTICAL CONCRETE STORM SEWER

The site plan illustrates the proposed Madison Avenue Interceptor, a 36-inch sanitary sewer line running along the eastern side of the property. The plan includes the following details:

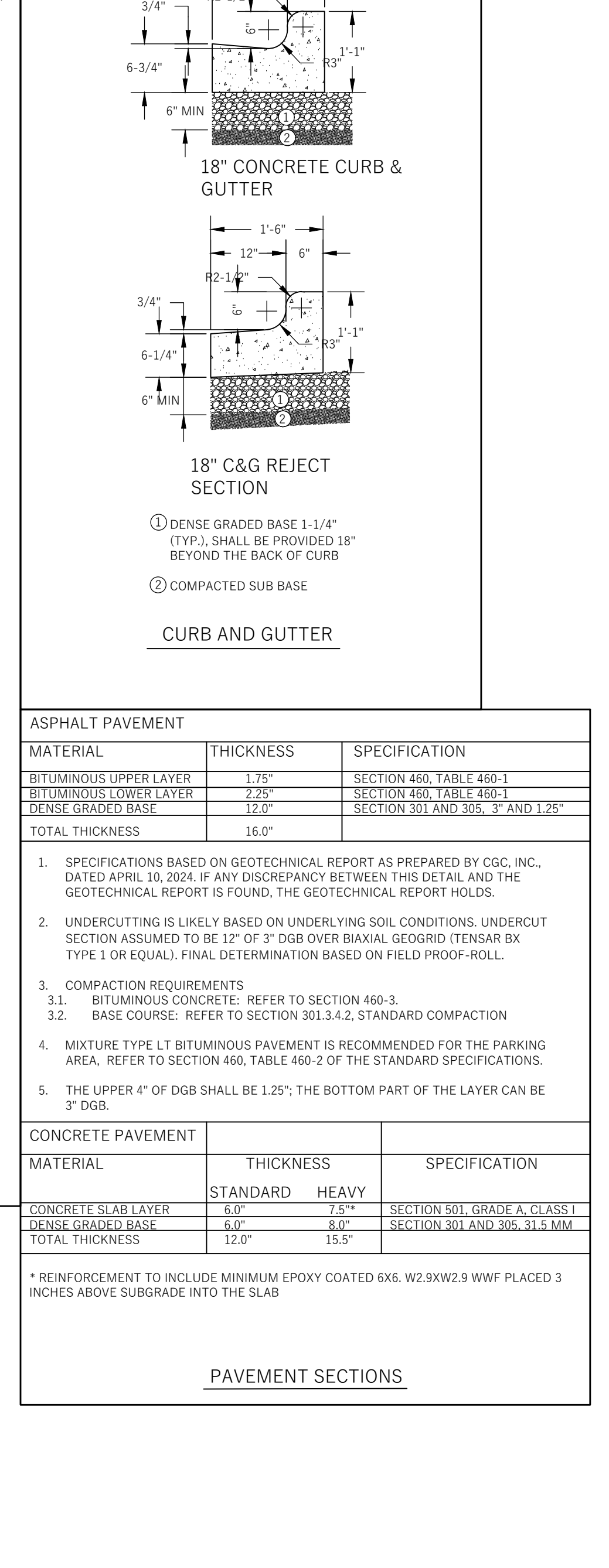
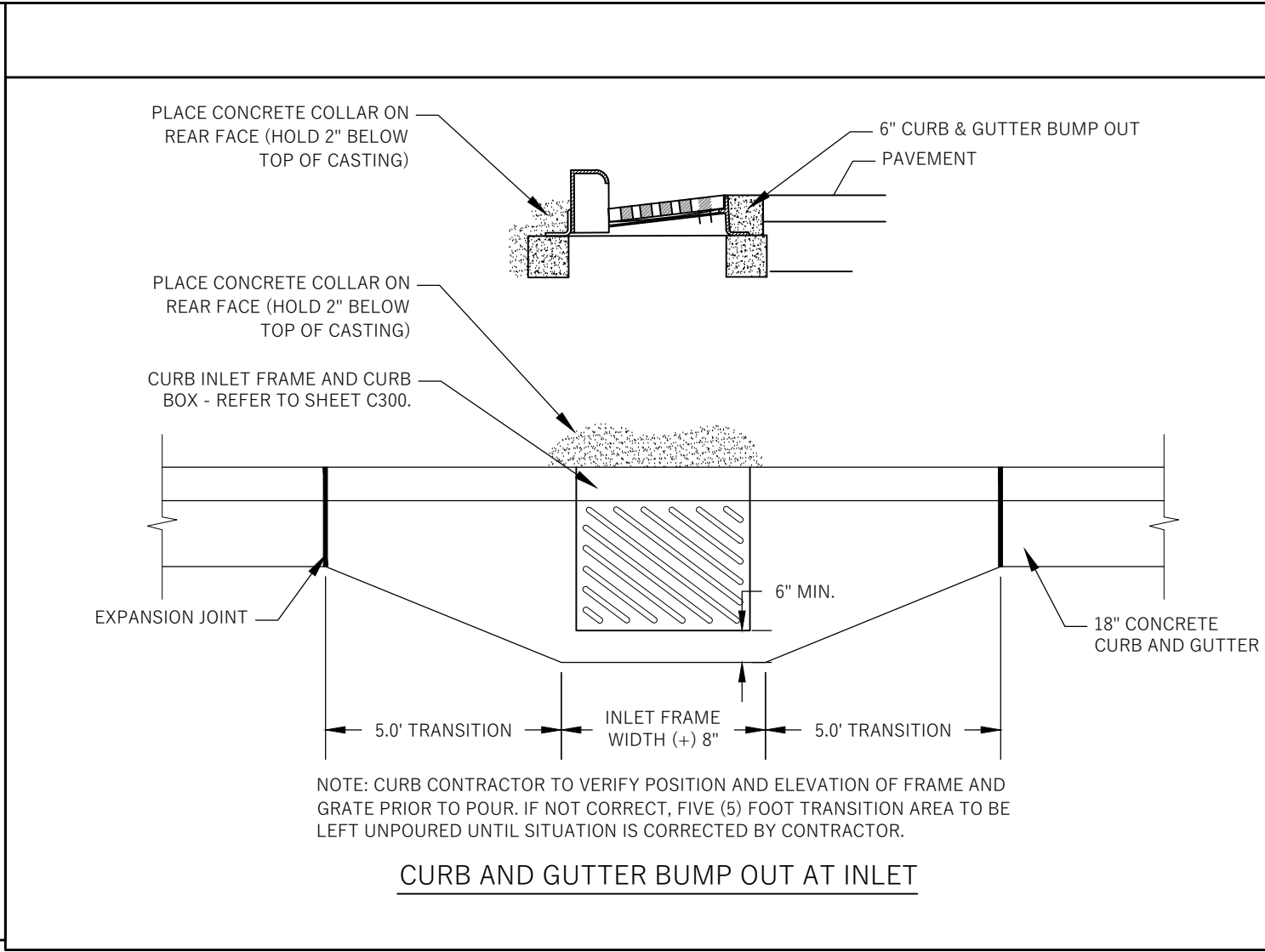
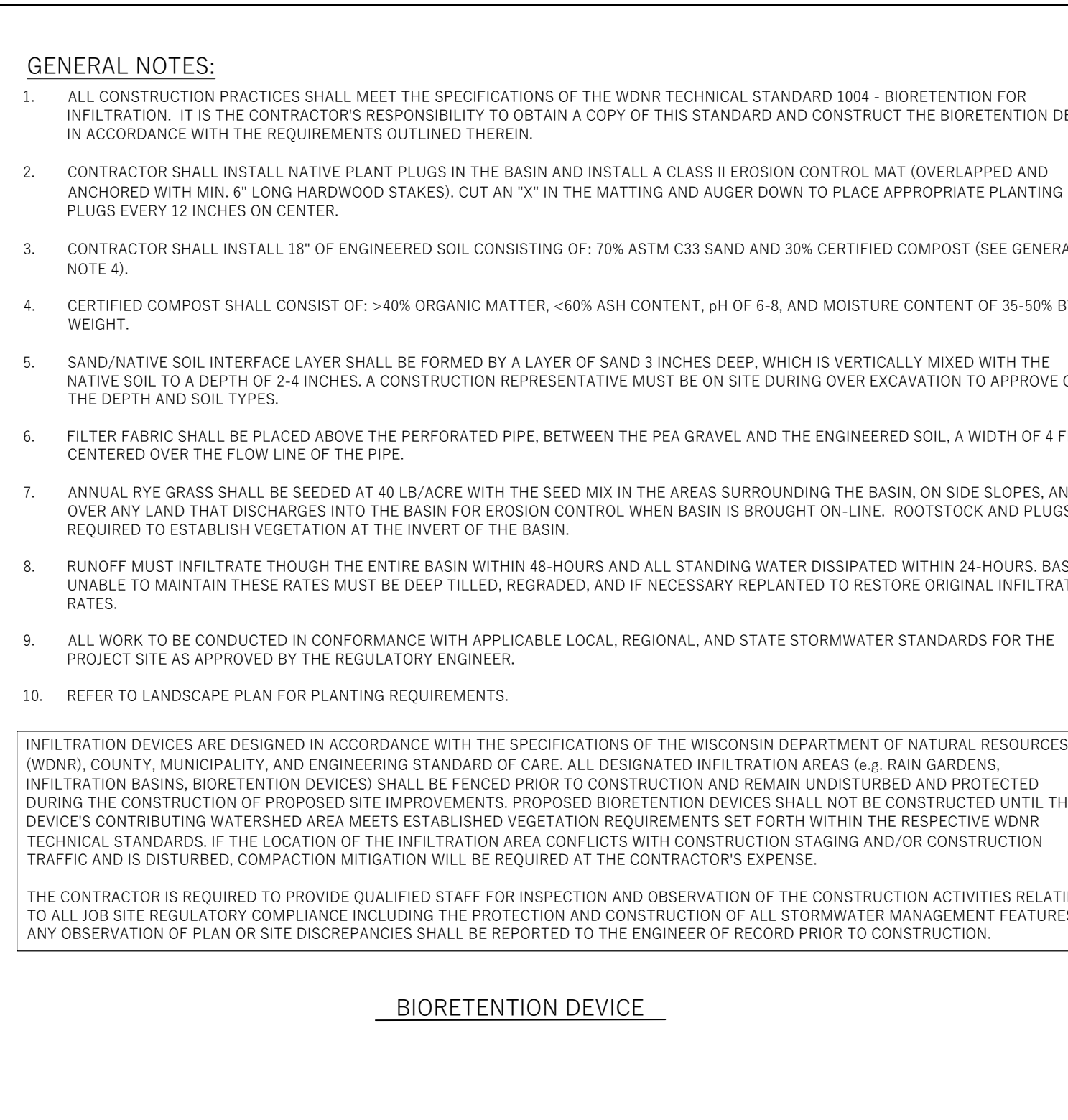
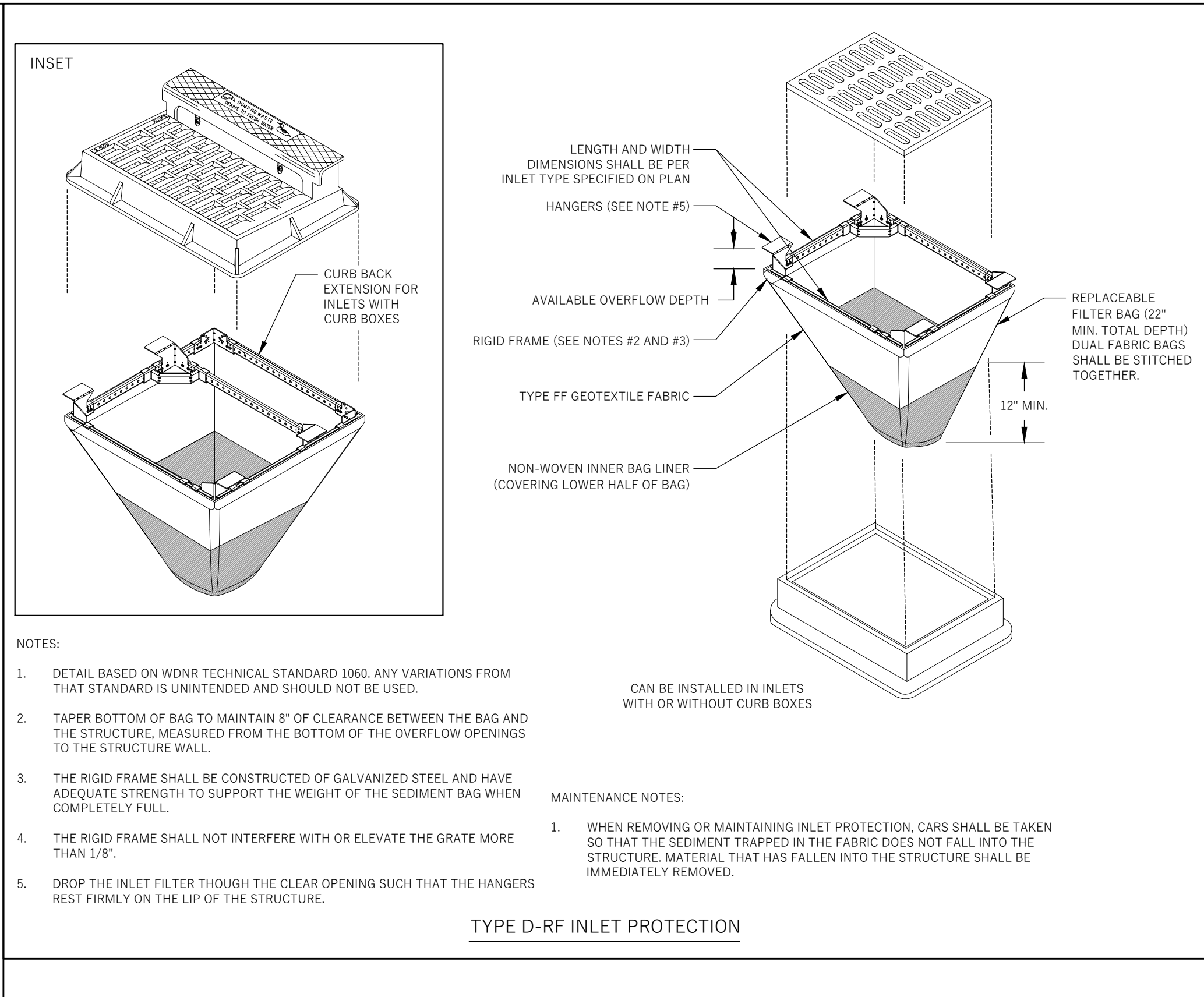
- Proposed Infrastructure:**
  - Stormwater Basins:** Two basins are shown, labeled "STORMWATER BASIN NO. 1" and "STORMWATER BASIN NO. 2".
  - Sanitary Sewer Interceptor:** A 36-inch sanitary sewer line running parallel to the basins.
  - Manholes and Inlets:** Various manholes (MH) and inlets (INL) are marked, including STM INL NO. 1 through NO. 22 and STM MH NO. 1.
  - Stormwater Management:** The plan shows the flow of stormwater from the basins into the interceptor and then into the existing sanitary sewer system.
- Existing Infrastructure:**
  - Sanitary Sewer:** Existing 36-inch sanitary sewer lines are shown running along the eastern boundary.
  - Stormwater:** Existing stormwater basins and inlets are also indicated.
- Engineering Details:**
  - Proposed Stormwater Basin No. 1:** Dimensions are given as 27 LF x 12' x 12' (HDFE) and 27 LF x 12' x 12' (HDFE).
  - Proposed Stormwater Basin No. 2:** Dimensions are given as 27 LF x 12' x 12' (HDFE) and 27 LF x 12' x 12' (HDFE).
  - Sanitary Sewer Interceptor:** The plan shows the proposed 36-inch sanitary sewer line running parallel to the basins.
  - Manholes and Inlets:** Various manholes (MH) and inlets (INL) are marked, including STM INL NO. 1 through NO. 22 and STM MH NO. 1.
- Other Features:**
  - Property Lines:** The plan shows the boundaries of the property, including the eastern boundary with Pennsylvania Avenue.
  - Existing Structures:** The plan shows the layout of the existing building and parking lot.
  - Topography:** The plan shows the existing topography of the site, including the location of trees and other features.

The plan is a detailed engineering drawing that provides a clear and concise overview of the proposed project. It includes all the necessary information for the construction of the Madison Avenue Interceptor, including the location of the basins, the sanitary sewer line, and the manholes and inlets. The plan is a valuable tool for engineers, architects, and other professionals involved in the project.

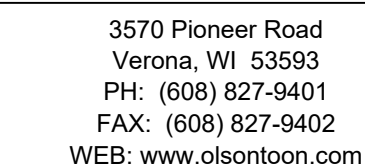
CONNECTION INTO EXISTING STORM  
SEWER STRUCTURE  
MIN ELEVATION AT GUTTER = 949.77  
E. (E) = 847.12 (EX. 12" RCP)  
E. (S) = 847.19 (EX. 12" RCP)  
E. (W) = 847.20 (12" HDPE)

## C300





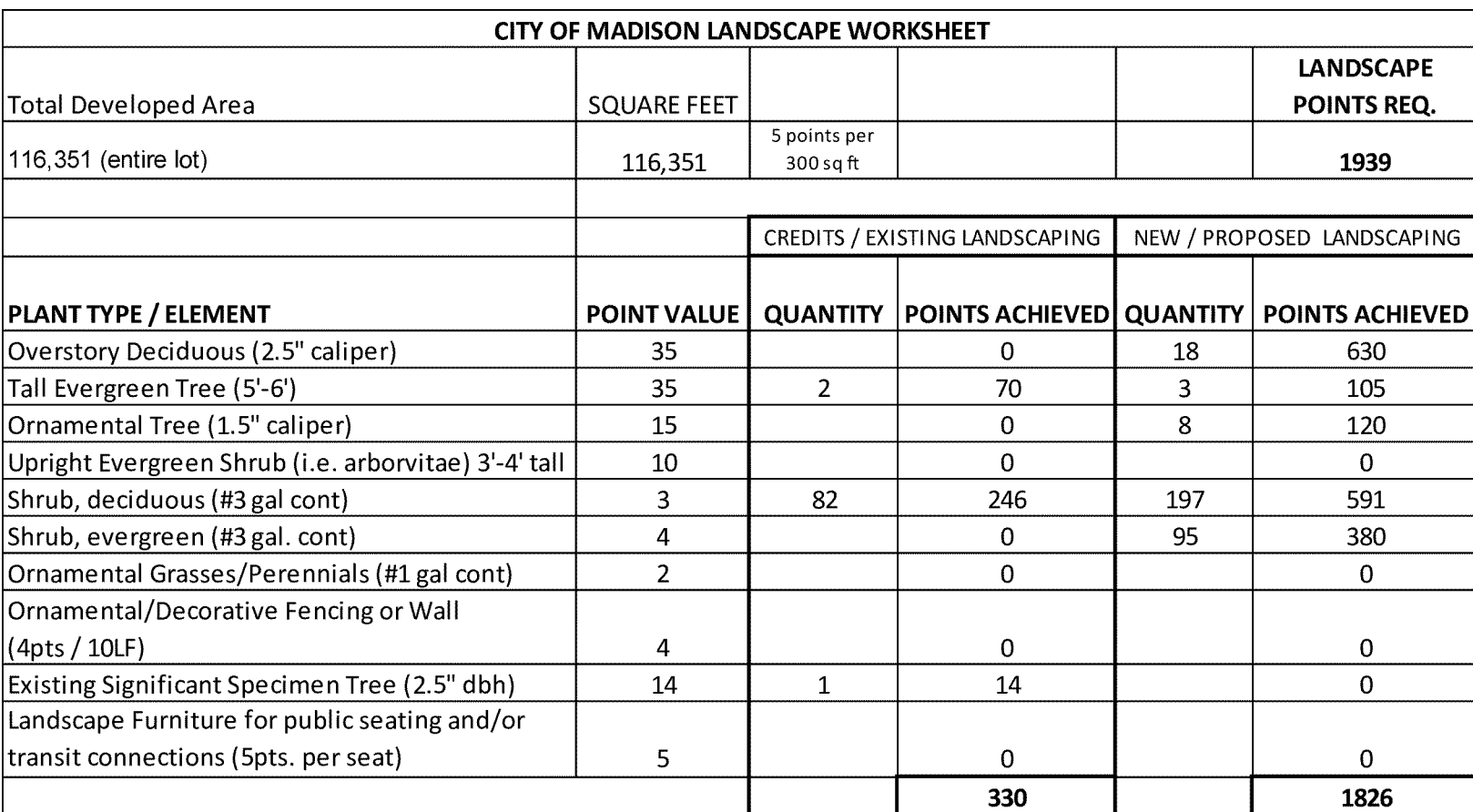




22230 Pennsylvania Avenue  
Madison, WI

Seal:  
To protect against legal liability,  
the plans presented herein are  
"schematic," and should not be  
outsourced as "biddable" or  
"construction documents" unless  
approved by the Landscape  
Designer. This is not an original  
document unless stamped in  
red, as ORIGINAL.

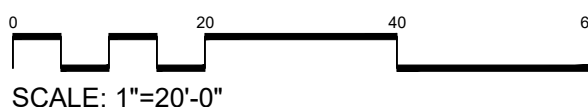
Reference Name:  
New Madison Development



PLANT LIST					
KEY	Common Name	Scientific Name	Size	Quantity	Root
<b>EVERGREEN TREES</b>					
NS	Norway Spruce	Picea abies	6'	3	B&B
<b>SHADE TREES</b>					
AH	American Hornbeam	Carpinus caroliniana	3"	6	B&B
AM	Armstrong Maple	Acer x Freemanii 'Armstrong'	3"	5	B&B
RO	Regal Prince Oak	Quercus robur x bicolor 'Long'	3"	4	B&B
SH	Street Keeper Honeylocust	Gleditsia triacanthos 'Draves'	3"	3	B&B
<b>ORNAMENTAL TREES</b>					
IS	Ivory Silk Japanese Tree Lilac	Syringa rectilata 'Ivory Silk'	2"	4	B&B
RJ	Red Jewel Crabapple	Malus 'Jewelcole'	2"	4	B&B
<b>EVERGREEN SHRUBS</b>					
Kj	Kallay Compact Juniper	Juniperus chinensis 'Kallays Compacta'	#3	51	Cont.
Mj	Mini Arcadia Juniper	Juniperus sabina 'Mini Arcadia'	#3	44	Cont.
<b>SHRUBS</b>					
Bv	Blue Muffin Viburnum	Viburnum dentatum 'Christom'	#5	8	Cont.
Bf	Bronsenheim Dwarf Forsythia	Forsythia viridissima 'Bronxensis'	#3	43	Cont.
Cp	Crème Brulee Potentilla	Potentilla fruticosa 'Bailbrule'	#3	26	Cont.
Fd	Firedance Dogwood	Cornus sericea 'Balladeline'	#5	14	Cont.
La	Low Scape Mound Chokeberry	Aronia melanocarpa 'Uconnam 165'	#3	83	Cont.
Nt	New Jersey Tea	Ceanothus americanus	#3	14	Cont.
Sw	Saint John's Wort	Hypericum prolificum	#3	9	Cont.

 Premium grass seed with straw mat erosion blanket.

At least one week prior to street tree planting, Contractor shall contact City Forestry (608-266-4816) to schedule inspection and approval of nursery tree stock and review planting specifications with the landscaper.





METAL BARREL VAULT ROOF,  
BLACK TINT

TWO 1/8" THICK PIECES OF  
GLASS WITH LAMINATE IN  
BETWEEN FOR A TOTAL  
WIDTH OF 1/4". NO TINTING  
OR ANTI-GRAFFITI.

ALUMINUM FRAMEWORK,  
BLACK ANODIZED

ALUMINUM GRILLWORK,  
BLACK ANODIZED

ALUMINUM ARMREST,  
BLACK ANODIZED, TYP.

BACKLESS WOOD BENCH,  
WALL-MOUNTED

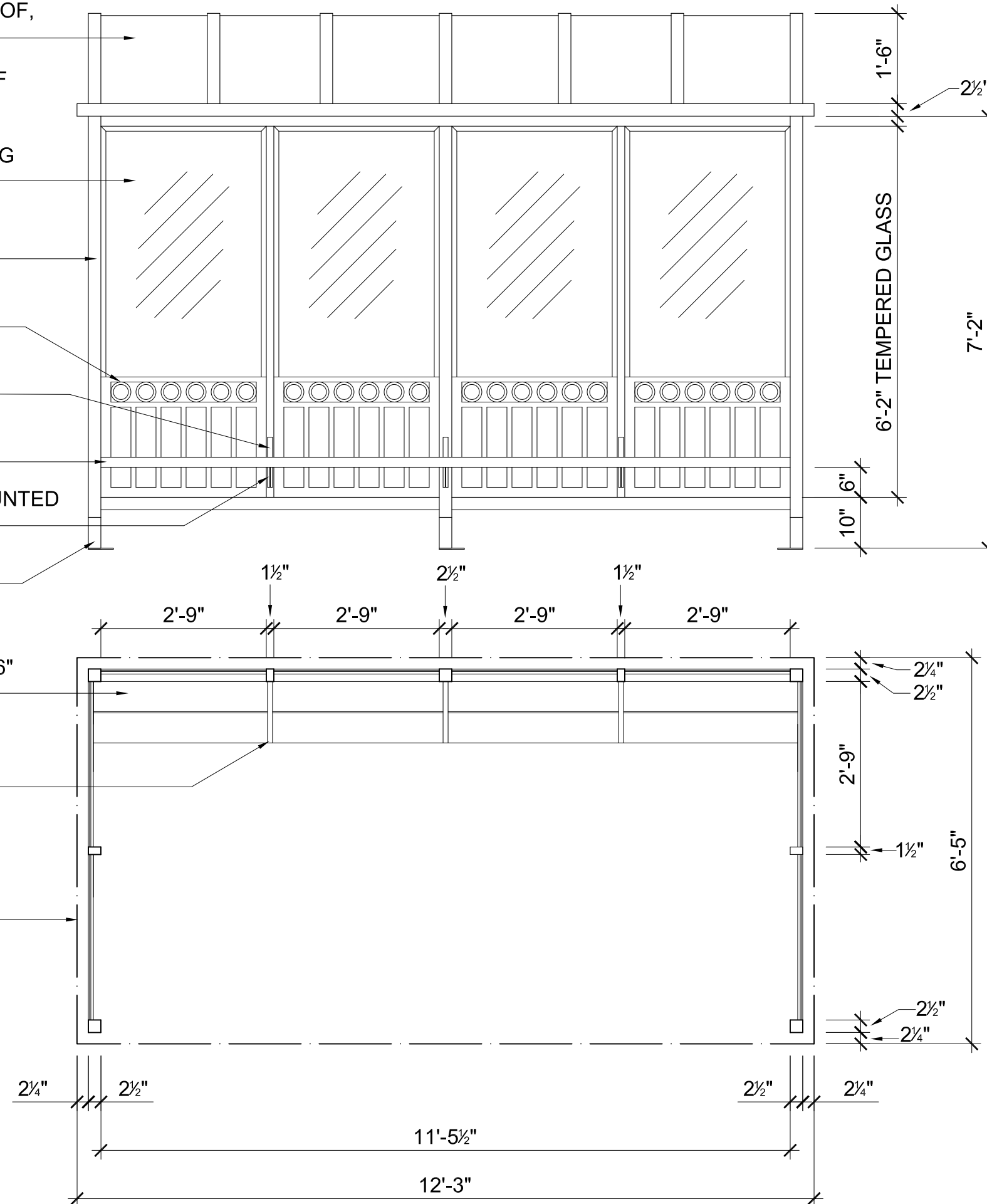
BRACKET FOR WALL-MOUNTED  
BENCH, BLACK, TYP.

ANCHOR BRACKET,  
BLACK, TYP.

BACKLESS WOOD BENCH,  
WALL-MOUNTED, TWO 2"x6"  
BOARDS

ALUMINUM ARMREST,  
BLACK ANODIZED, TYP.

ROOF



## FRONT ELEVATION

## PLAN VIEW



FACILITIES PLANNING AND MANAGEMENT  
Campus Planning & Landscape Architecture

Suite 930 WARF  
610 Walnut Street  
Madison, Wisconsin 53726

Project:  
UNIVERSITY OF WISCONSIN-MADISON  
BUS SHELTER

Drawing Title:

BUS SHELTER  
DETAIL SET

File Location:  
L:\ACAD\PLANNING\Special Project Sites\UW-Madison Bus Stop  
Shelter\Campus Standard Bus Shelter Details.dwg

Date:  
02-10-08

Building No.:

Designed By:

Drawn By:  
TAP

Revision No.	Date	By
1	3-3-08	TAP
2	8-6-12	KJY
3	1-11-13	KJY

O.S.M. No.	Date	By

Scale:  
1/2" = 1'-0"

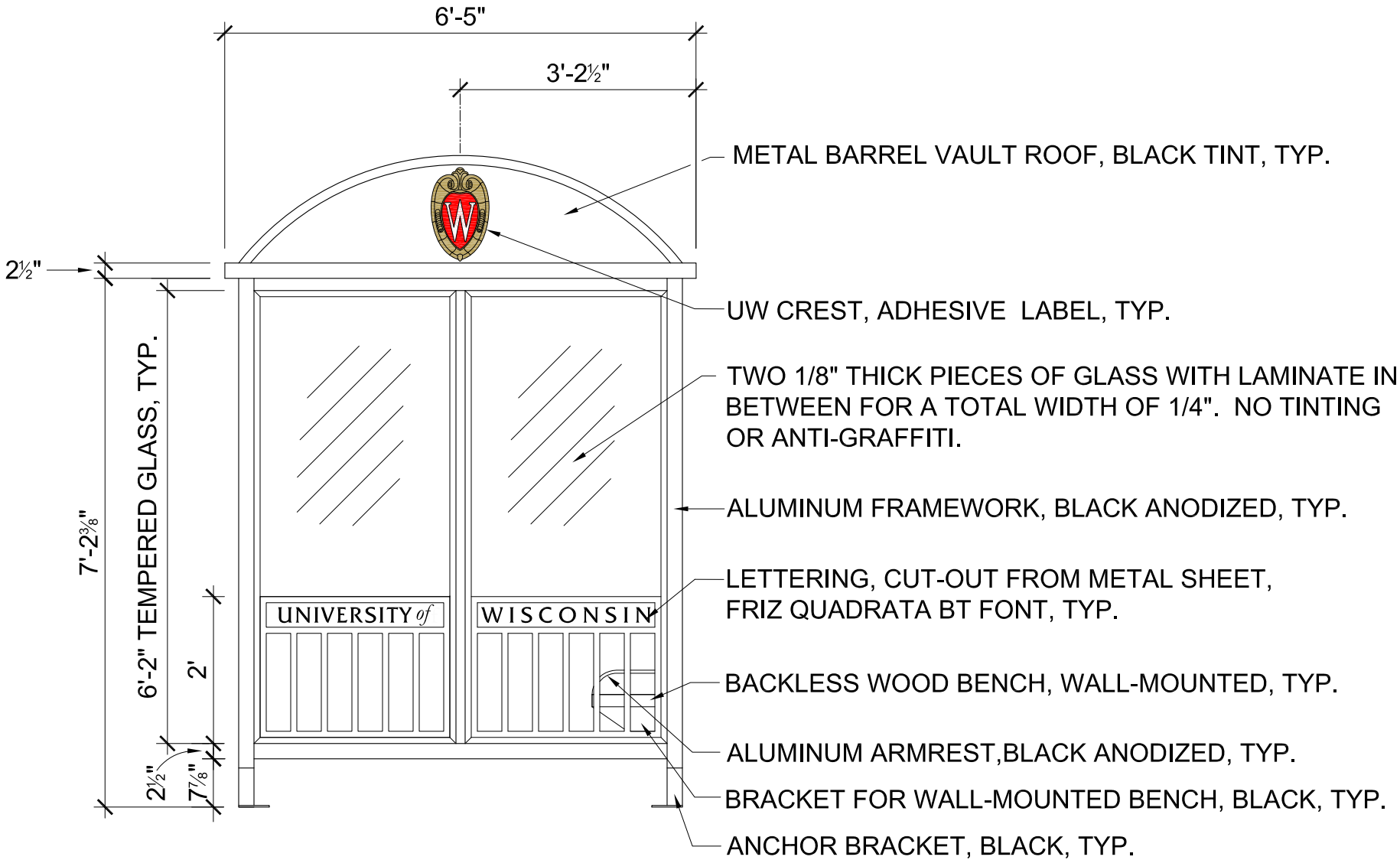
Sheet:


L-1

Of: 2



SIDE ELEVATION





FACILITIES PLANNING AND MANAGEMENT  
Campus Planning & Landscape Architecture

Suite 930 WARF  
610 Walnut Street  
Madison, Wisconsin 53726

Project: <b>UNIVERSITY OF WISCONSIN-MADISON BUS SHELTER</b>		Drawing Title: <b>BUS SHELTER DETAIL SET</b>		File Location: L:\ACAD\PLANNING\Special Project Sites\UW-Madison Bus Stop Shelter\Campus Standard Bus Shelter Details.dwg
Date: 02-10-08		Building No.:		
Designed By:		Drawn By: TAP		
Revision No.	Date	By		
1	3-3-08	TAP		
2	8-6-12	KJY		
3	1-11-13	KJY		
O.S.M. No.		Date		
Scale:		1/2" = 1'-0"		
Sheet:		L-2		
Of:		2		



ALUMINUM FRAMEWORK,  
BLACK ANODIZED, TYP.

BRACKET FOR WALL-  
MOUNTED BENCH, TYP.

TWO 1/8" THICK PIECES OF  
GLASS WITH LAMINATE IN  
BETWEEN FOR A TOTAL  
WIDTH OF 1/4". NO TINTING  
OR ANTI-GRAFFITI.

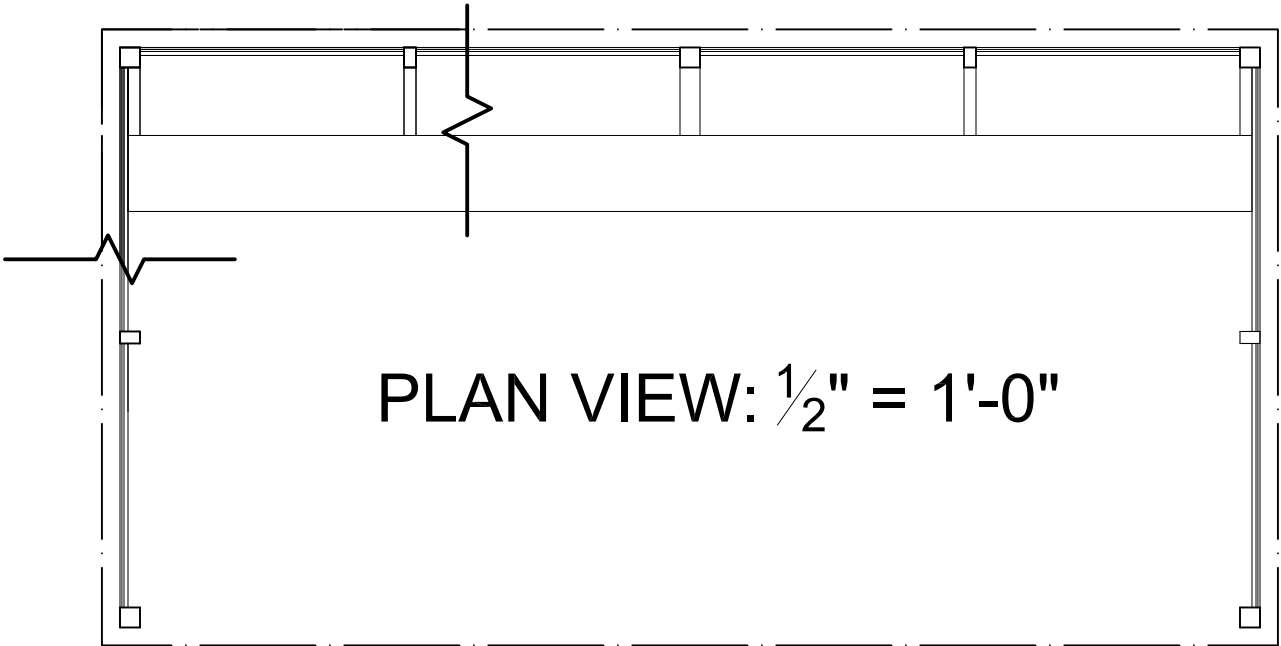
ALUMINUM GRILLWORK,  
BLACK ANODIZED,  
1/2" THICK, TYP.

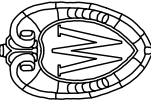
1/4" GAP BETWEEN GLASS  
AND GRILLWORK

ROOF

BACKLESS WOOD BENCH

PLAN VIEW ENLARGEMENT: 2" = 1'-0"





THE UNIVERSITY  
**WISCONSIN**  
MADISON

FACILITIES PLANNING AND MANAGEMENT  
Campus Planning & Landscape Architecture

Suite 930 WARF  
610 Walnut Street  
Madison, Wisconsin 53726

Project:  
**UNIVERSITY OF WISCONSIN-MADISON  
BUS SHELTER**

Drawing Title:  
**BUS SHELTER  
DETAIL SET**

File Location:  
L:\ACAD\PLANNING\Special Project Sites\UW-Madison Bus Stop  
Shelter\Campus Standard Bus Shelter Details.dwg

Date:  
02-10-08

Building No.:

Designed By:

Drawn By:  
TAP

Revision No.	Date	By
1	3-3-08	TAP
2	8-6-12	KJY
3	1-11-13	KJY

O.S.M. No.	Date	By

Scale:

Sheet:  
**L-3**

Of: 3



- NOTES:
- Customers are responsible for confirming mounting heights, fixture suspension types/ lengths, color temperature, CRI, linear fixture lengths, pole lengths, and bollard heights/ lengths prior to ordering.
  - Mounting height (MH) is measured from the bottom of the fixture to the floor.
  - This Lighting layout assumes the following unless values are specified and must be confirmed by the customer prior to ordering.
    - Room reflectance of 80, 50, 20 for standard ceilings and 50, 50, 20 for exposed ceilings
    - Wall sconces are mounted at 7' for calculation purposes. Customer must confirm desired mounting height before rough in.

Luminaire Schedule								
Qty	Label	Arrangement	LLF	MFR	Description	Lum. Watts	Total Watts	Lum. Lumens
10	OA5	Single	0.950	LITHONIA	RSX1 LED P3 xxK R5- 23FT POLE 3 FT BASE	109.44	1094.4	14394

Calculation Summary							
Label	CalcType	Units	Avg	Max	Min	Avg/Min	Max/Min
SITE	Illuminance	Fc	0.95	2.07	0.01	95.00	207.00
PARKING AREA	Illuminance	Fc	1.22	2.1	0.4	3.05	5.25



REVISIONS		#	DATE	COMMENTS

DRAWN BY : AD		DATE : FEB 19, 2025		SCALE : 1" = 30' - 0"	
Pennsylvania Avenue		MADISON, WISCONSIN			
LIGHTING LAYOUT					



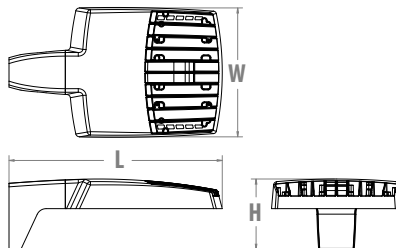


## RSX1 LED Area Luminaire



### Specifications

EPA (ft <sup>2</sup> @0°):	0.57 ft <sup>2</sup> (0.05 m <sup>2</sup> )
Length:	21.8" (55.4 cm) (SPA mount)
Width:	13.3" (33.8 cm)
Height:	3.0" (7.6 cm) Main Body 7.2" (18.4 cm) Arm
Weight: (SPA mount):	22.0 lbs (10.0 kg)



Catalog Number
Notes
Type

Hit the Tab key or mouse over the page to see all interactive elements.

### Introduction

The new RSX LED Area family delivers maximum value by providing significant energy savings, long life and outstanding photometric performance at an affordable price. The RSX1 delivers 7,000 to 17,000 lumens allowing it to replace 70W to 400W HID luminaires.

The RSX features an integral universal mounting mechanism that allows the luminaire to be mounted on most existing drill hole patterns. This "no-drill" solution provides significant labor savings. An easy-access door on the bottom of mounting arm allows for wiring without opening the electrical compartment. A mast arm adaptor, adjustable integral slipfitter and other mounting configurations are available.



Items marked by a shaded background qualify for the Design Select program and ship in 15 days or less. To learn more about Design Select, visit [www.acuitybrands.com/designselect](http://www.acuitybrands.com/designselect).  
\*See ordering tree for details

### Ordering Information

EXAMPLE: RSX1 LED P4 40K R3 MVOLT SPA DDBXD

RSX1 LED		**VERIFY**			
Series	Performance Package	Color Temperature	Distribution	Voltage	Mounting
RSX1 LED	P1 P2 P3 P4	30K 3000K 40K 4000K 50K 5000K	R2 Type 2 Wide R3 Type 3 Wide R3S Type 3 Short R4 Type 4 Wide R4S Type 4 Short R5 Type 5 Wide <sup>1</sup> R5S Type 5 Short <sup>1</sup> AFR Automotive Front Row AFRR90 Automotive Front Row Right Rotated AFRL90 Automotive Front Row Left Rotated	MVOLT (120V-277V) <sup>2</sup> HVOLT (347V-480V) <sup>3</sup> XVOLT (277V-480V) <sup>4</sup>  (use specific voltage for options as noted)  120 <sup>3</sup> 277 <sup>5</sup> 208 <sup>3</sup> 347 <sup>5</sup> 240 <sup>3</sup> 480 <sup>5</sup>	SPA Square pole mounting (3.0" min. SQ pole for 1 at 90°, 3.5" min. SQ pole for 2, 3, 4 at 90°) RPA Round pole mounting (3.2" min. dia. RND pole for 2, 3, 4 at 90°, 3.0" min. dia. RND pole for 1 at 90°, 2 at 180°, 3 at 120°) MA Mast arm adaptor (fits 2-3/8" OD horizontal tenon) IS Adjustable slipfitter (fits 2-3/8" OD tenon) <sup>6</sup> WBA Wall bracket <sup>1</sup> WBASC Wall bracket with surface conduit box AASP Adjustable tilt arm square pole mounting <sup>6</sup> AARP Adjustable tilt arm round pole mounting <sup>6</sup> AAWB Adjustable tilt arm with wall bracket <sup>6</sup> AAWSC Adjustable tilt arm wall bracket and surface conduit box <sup>6</sup>

Options	**VERIFY**
<b>Shipped Installed</b> HS House-side shield <sup>7</sup> PE Photocontrol, button style <sup>8,9</sup> PER7 Seven-wire twist-lock receptacle only (no controls) <sup>9,10,11</sup> SF Single fuse (120, 277, 347) <sup>5</sup> DF Double fuse (208, 240, 480) <sup>5</sup> SPD20KV 20KV Surge pack (10KV standard) FAO Field adjustable output <sup>9</sup> DMG 0-10V dimming extend out back of housing for external control (control ordered separate) <sup>9</sup>	<b>Shipped Installed</b> *Standalone and Networked Sensors/Controls (factory default settings, see table page 9) NLTAIR2 PIRHN nLight AIR generation 2, with Networked, Bi-Level motion/ambient sensor <sup>9,12,13,14</sup> BAA Buy America(n) Act and/or Build America Buy America Qualified CCE Coastal Construction <sup>15</sup>  *Note: NLTAIR2 PIRHN with nLight Air can be used as a standalone or networked solution. Sensor coverage pattern is affected when luminaire is tilted.  <b>Shipped Separately (requires some field assembly)</b> EGS External glare shield <sup>7</sup> EGFV External glare full visor (360° around light aperture) <sup>7</sup> BS Bird spikes <sup>16</sup>
	<b>Finish</b> DDBXD Dark Bronze DBLXD Black DNAXD Natural Aluminum DWHXD White DDBTXD Textured Dark Bronze DBLTXD Textured Black DNATXD Textured Natural Aluminum DWHGXD Textured White





**Job Name:**  
Pennsylvania Avenue Parking  
Contractor: Phaze Electric (Madison)

**Catalog Number:**  
RSX1 LED P3 \*\*K R5 MVOLT SPA  
\*FINISH\*  
Notes:

Type:

OA5

ELL25-136082

## Ordering Information

### Accessories

Ordered and shipped separately.

RSX1HS	RSX1 House side shield (includes 1 shield)
RSX1HSAFR U	RSX1 House side shield for AFR rotated optics (includes 1 shield)
RSX1EGS (FINISH) U	External glare shield (specify finish)
RSX1EGV (FINISH) U	External glare full visor (specify finish)
RSXRPA (FINISH) U	RSX Universal round pole adaptor plate (specify finish)
RSXWBA (FINISH) U	RSX WBA wall bracket (specify finish) <sup>1</sup>
RSXSCB (FINISH) U	RSX Surface conduit box (specify finish, for use with WBA, WBA not included)
DLL127F 1.5 JU	Photocell -SSL twist-lock (120-277V) <sup>17</sup>
DLL347F 1.5 CUL JU	Photocell -SSL twist-lock (347V) <sup>17</sup>
DLL480F 1.5 CUL JU	Photocell -SSL twist-lock (480V) <sup>17</sup>
DSHORT SBK U	Shorting cap <sup>17</sup>

### NOTES

- Any Type 5 distribution, is not available with WBA.
- MVOLT driver operates on any line voltage from 120-277V (50/60 Hz).
- HVOLT driver operates on any line voltage from 347-480V (50/60 Hz).
- XVOLT driver not available with P1 or P2. XVOLT driver operates on any line voltage from 277V-480V (50/60 Hz). XVOLT not available with fusing (SF or DF) and not available with PE.
- Single fuse (SF) requires 120V, 277V or 347V. Double fuse (DF) requires 208V, 240V or 480V.
- Maximum tilt is 90° above horizontal.
- It may be ordered as an accessory.
- Requires MVOLT or 347V.
- Two or more of the following options cannot be combined including PE, DMG, PER7, FAO and NLTAIR2 PIRHN. Exception: PE and FAO can be combined; also PE and DMG can be combined.
- Compatible with standard twist-lock photocells for dusk to dawn operation or advanced control nodes that provide 0-10V dimming signals. Wire 4/Wire 5 wired to dimming leads on driver. Wire6/Wire7 capped inside luminaire. Twistlock photocell ordered and shipped as a separate line item from Acuity Brands Controls. See accessories. Shorting Cap included.
- For units with option PER7, the mounting must be restricted to +/- 45° from horizontal aim per ANSI C136.10-2010.
- Must be ordered with PIRHN.
- Requires MVOLT or HVOLT.
- Must be ordered with NLTAIR2. For additional information on PIRHN visit [here](#).
- CCE option not available with WBA, WBASC, AASP, AARP, AAWB, AAWBSC, EGS, EGPV and BS.
- Must be ordered with fixture for factory pre-drilling.
- Requires luminaire to be specified with PER7 option. Ordered and shipped as a separate line item from Acuity Brands Controls.

## External Shields



House Side Shield



External Glare Shield

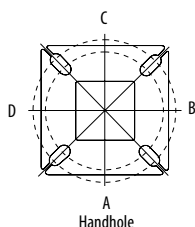


External 360 Full Visor

## Pole/Mounting Information

Accessories including bullhorns, cross arms and other adapters are available under the accessories tab at Lithonia's Outdoor Poles and Arms product page. Click [here](#) to visit [Accessories](#).

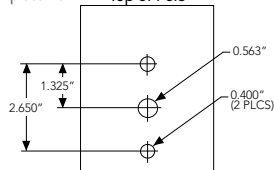
### HANDHOLE ORIENTATION



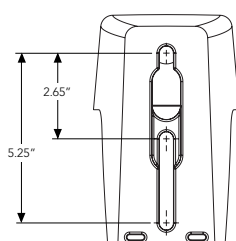
### RSX POLE DRILLING

Template #8

Top of Pole



### RSX STANDARD ARM & ADJUSTABLE ARM



### Round Tenon Mount - Pole Top Slipfitters

Tenon O.D.	RSX Mounting	Single	2 at 180°	2 at 90°	3 at 120°	3 at 90°	4 at 90°
2 - 3/8"	RPA, AARP	AS3-5190	AS3-5280	AS3-5290	AS3-5320	AS3-5390	AS3-5490
2 - 7/8"	RPA, AARP	AST25-190	AST25-280	AST25-290	AST25-320	AST25-390	AST25-490
4"	RPA, AARP	AST35-190	AST35-280	AST35-290	AST35-320	AST35-390	AST35-490

### Drill/Side Location by Configuration Type

Drilling Template	Mounting Option	Single	2 @ 180	2 @ 90	3 @ 120	3 @ 90	4 @ 90
	Head Location	Side B	Side B & D	Side B & C	Round Pole Only	Side B, C & D	Side A, B, C & D
#8	Drill Nomenclature	DM19AS	DM28AS	DM29AS	DM32AS	DM39AS	DM49AS

### RSX1 - Luminaire EPA

\*Includes luminaire and integral mounting arm. Other tenons, arms, brackets or other accessories are not included in this EPA data.

Fixture Quantity & Mounting Configuration		Single	2 @ 90	2 @ 180	3 @ 90	3 @ 120	4 @ 90	2 Side by Side	3 Side by Side	4 Side by Side
Mounting Type	Tilt									
SPA - Square Pole Adaptor	0°	0.57	1.03	1.05	1.52	1.36	2.03	1.31	1.7	2.26
RPA - Round Pole Adaptor		0.62	1.08	1.15	1.62	1.46	2.13	1.36	1.8	2.36
MA - Mast Arm Adaptor		0.49	0.95	0.89	1.36	1.2	1.87	1.23	1.54	2.1
IS - Integral Slipfitter AASP/AARP - Adjustable Arm Square/Round Pole	0°	0.57	1.03	1.05	1.52	1.36	2.03	1.31	1.7	2.26
	10°	0.68	1.34	1.33	2	1.74	2.64	1.35	2.03	2.71
	20°	0.87	1.71	1.73	2.56	2.26	3.42	1.75	2.62	3.49
	30°	1.24	2.19	2.3	3.21	2.87	4.36	2.49	3.73	4.97
	40°	1.81	2.68	2.98	3.85	3.68	5.30	3.62	5.43	7.24
	45°	2.11	2.92	3.44	4.2	4.08	5.77	4.22	6.33	8.44
	50°	2.31	3.17	3.72	4.52	4.44	6.26	4.62	6.94	9.25
	60°	2.71	3.66	4.38	5.21	5.15	7.24	5.43	8.14	10.86
	70°	2.78	3.98	4.54	5.67	5.47	7.91	5.52	8.27	11.03
	80°	2.76	4.18	4.62	5.97	5.76	8.31	5.51	8.27	11.03
	90°	2.73	4.25	4.64	6.11	5.91	8.47	5.45	8.18	10.97





**Job Name:**  
 Pennsylvania Avenue Parking  
 Contractor: Phaze Electric (Madison)

**Catalog Number:**

RSX1 LED P3 \*\*K R5 MVOLT SPA

\*FINISH\*

Notes:

**Type:****OA5**

ELL25-136082

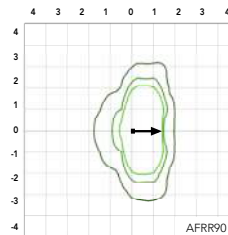
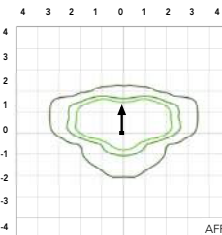
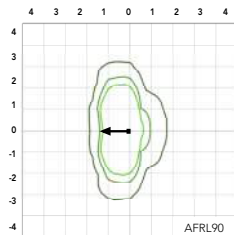
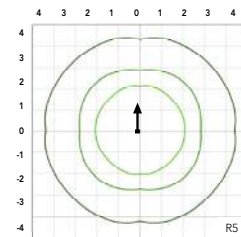
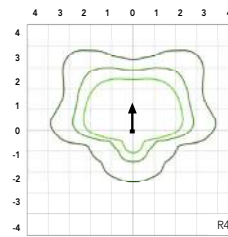
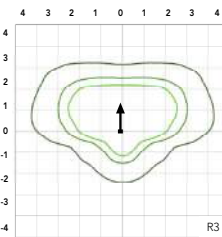
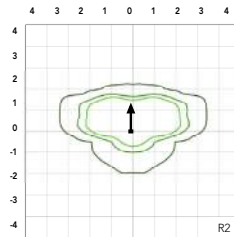
## Photometric Diagrams

To see complete photometric reports or download .ies files for this product, visit Lithonia Lighting's [RSX Area homepage](#).

Isofootcandle plots for the RSX1 LED P4 40K. Distances are in units of mounting height (20').

**LEGEND**

0.1 fc  
 0.5 fc  
 1.0 fc



## Performance Data

### Lumen Ambient Temperature (LAT) Multipliers

Use these factors to determine relative lumen output for average ambient temperatures from 0-50°C (32-122°F).

Ambient	Ambient	Lumen Multiplier
0°C	32°F	1.05
5°C	41°F	1.04
10°C	50°F	1.03
15°C	59°F	1.02
20°C	68°F	1.01
25°C	77°F	1.00
30°C	86°F	0.99
35°C	95°F	0.98
40°C	104°F	0.97
45°C	113°F	0.96
50°C	122°F	0.95

### Electrical Load

Performance Package	System Watts (W)	Current (A)					
		120V	208V	240V	277V	347V	480V
P1	51W	0.42	0.25	0.21	0.19	0.14	0.11
P2	72W	0.60	0.35	0.30	0.26	0.21	0.15
P3	109W	0.91	0.52	0.45	0.39	0.31	0.23
P4	133W	1.11	0.64	0.55	0.48	0.38	0.27

### Projected LED Lumen Maintenance

Operating Hours	50,000	75,000	100,000
Lumen Maintenance Factor	>0.97	>0.95	>0.92

Values calculated according to IESNA TM-21-11 methodology and valid up to 40°C.





Performance Data

**Lumen Output**  
Lumen values are from photometric tests performed in accordance with IESNA LM-79-08. Data is considered to be representative of the configurations shown, within the tolerances allowed by Lighting Facts. Contact factory for performance data on any configurations not shown here.

Performance Package	System Watts	Distribution Type	30K (3000K, 70 CRI)					40K (4000K, 70 CRI)					50K (5000K, 70 CRI)				
			Lumens	B	U	G	LPW	Lumens	B	U	G	LPW	Lumens	B	U	G	LPW
P1	51W	R2	6,482	1	0	1	126	7,121	1	0	1	139	7,121	1	0	1	139
		R3	6,459	1	0	2	127	7,096	1	0	2	139	7,096	1	0	2	139
		R3S	6,631	1	0	1	129	7,286	1	0	2	142	7,286	1	0	2	142
		R4	6,543	1	0	2	128	7,189	1	0	2	141	7,189	1	0	2	141
		R4S	6,313	1	0	1	124	6,936	1	0	1	136	6,936	1	0	1	136
		R5	6,631	3	0	2	130	7,286	3	0	2	143	7,286	3	0	2	143
		R5S	6,807	3	0	1	133	7,479	3	0	1	147	7,479	3	0	1	147
		AFR	6,473	1	0	1	127	7,112	1	0	1	139	7,112	1	0	1	139
		AFRR90	6,535	2	0	2	127	7,179	2	0	2	140	7,179	2	0	2	140
		AFRL90	6,562	2	0	1	128	7,210	2	0	2	140	7,210	2	0	2	140
P2	72W	R2	8,991	2	0	1	123	9,878	2	0	1	135	9,878	2	0	1	135
		R3	8,959	2	0	2	124	9,843	2	0	2	137	9,843	2	0	2	137
		R3S	9,198	2	0	2	126	10,106	2	0	2	139	10,106	2	0	2	139
		R4	9,077	2	0	2	126	9,972	2	0	2	139	9,972	2	0	2	139
		R4S	8,757	1	0	2	122	9,622	2	0	2	134	9,622	2	0	2	134
		R5	9,198	4	0	2	128	10,106	4	0	2	140	10,106	4	0	2	140
		R5S	9,443	3	0	1	131	10,374	3	0	1	144	10,374	3	0	1	144
		AFR	8,979	2	0	1	125	9,865	2	0	1	137	9,865	2	0	1	137
		AFRR90	9,064	3	0	2	124	9,959	3	0	2	137	9,959	3	0	2	137
		AFRL90	9,102	3	0	2	125	10,001	3	0	2	137	10,001	3	0	2	137
P3	109W	R2	12,808	2	0	1	117	14,072	2	0	2	129	14,072	2	0	2	129
		R3	12,763	2	0	2	117	14,023	2	0	2	129	14,023	2	0	2	129
		R3S	13,104	2	0	2	120	14,397	2	0	2	132	14,397	2	0	2	132
		R4	12,930	2	0	2	119	14,206	2	0	2	130	14,206	2	0	2	130
		R4S	12,475	2	0	2	114	13,707	2	0	2	126	13,707	2	0	2	126
		R5	13,104	4	0	2	120	14,397	4	0	2	132	14,397	4	0	2	132
		R5S	13,452	3	0	2	123	14,779	3	0	2	136	14,779	3	0	2	136
		AFR	12,791	2	0	1	117	14,053	2	0	2	129	14,053	2	0	2	129
		AFRR90	12,913	3	0	3	118	14,187	3	0	3	130	14,187	3	0	3	130
		AFRL90	12,967	3	0	2	118	14,247	3	0	3	130	14,247	3	0	3	130
P4	133W	R2	14,943	2	0	2	112	16,417	2	0	2	123	16,417	2	0	2	123
		R3	14,890	2	0	3	112	16,360	2	0	3	123	16,360	2	0	3	123
		R3S	15,287	2	0	2	115	16,796	2	0	2	126	16,796	2	0	2	126
		R4	15,085	2	0	3	113	16,574	2	0	3	125	16,574	2	0	3	125
		R4S	14,554	2	0	2	109	15,991	2	0	2	120	15,991	2	0	2	120
		R5	15,287	4	0	2	115	16,796	4	0	2	126	16,796	4	0	2	126
		R5S	15,693	4	0	2	118	17,242	4	0	2	130	17,242	4	0	2	130
		AFR	14,923	2	0	2	112	16,395	2	0	2	123	16,395	2	0	2	123
		AFRR90	15,065	3	0	3	113	16,551	3	0	3	124	16,551	3	0	3	124
		AFRL90	15,128	3	0	3	114	16,621	3	0	3	125	16,621	3	0	3	125





**Job Name:**  
 Pennsylvania Avenue Parking  
 Contractor: Phaze Electric (Madison)

**Catalog Number:**  
 RSX1 LED P3 \*\*K R5 MVOLT SPA  
 \*FINISH\*  
 Notes:

Type:

**OA5**

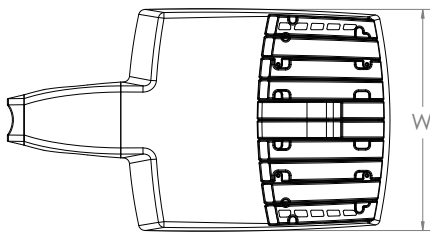
ELL25-136082

## Dimensions & Weights

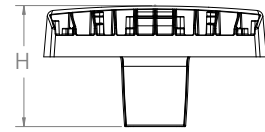
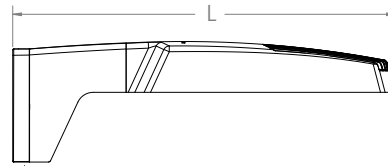
### Luminaire Weight by Mounting Type

Mounting Configuration	Total Luminaire Weight
SPA	22 lbs
RPA	24 lbs
MA	22 lbs
WBA	25 lbs
WBASC	28 lbs
IS	25 lbs
AASP	25 lbs
AARP	27 lbs
AAWB	28 lbs
AAWSC	31 lbs

### RSX1 with Round Pole Adapter (RPA)



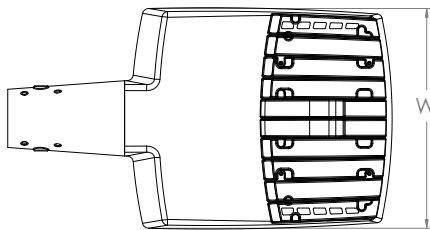
Length: 22.8" (57.9 cm)  
 Width: 13.3" (33.8 cm)  
 Height: 3.0" (7.6 cm) Main Body  
 7.2" (18.4 cm) Arm



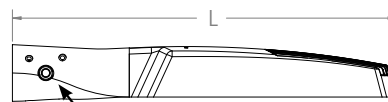
Note: RPA — Round Pole mount can also be used to mount on square poles by omitting the round pole adapter plate shown here.



### RSX1 with Mast Arm Adapter (MA)



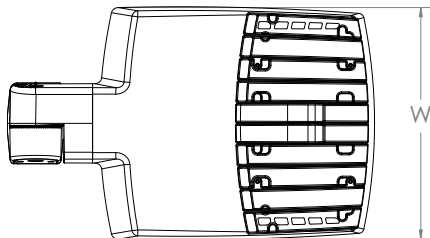
Length: 23.2" (59.1 cm)  
 Width: 13.3" (33.8 cm)  
 Height: 3.0" (7.6 cm) Main Body  
 3.5" (8.9 cm) Arm



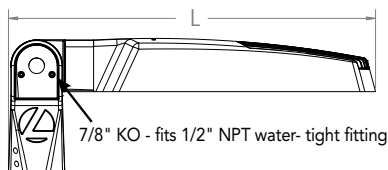
7/16" locking thru bolt/nut provided



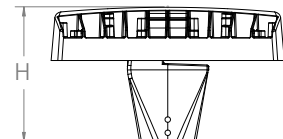
### RSX1 with Adjustable Slipfitter (IS)



Length: 20.7" (52.7 cm)  
 Width: 13.3" (33.8 cm)  
 Height: 3.0" (7.6 cm) Main Body  
 7.6" (19.3 cm) Arm



7/8" KO - fits 1/2" NPT water-tight fitting



One Lithonia Way • Conyers, Georgia 30012 • Phone: 1-800-705-SERV (7378) • [www.acuitybrands.com](http://www.acuitybrands.com)  
 © 2018-2025 Acuity Brands Lighting, Inc. All rights reserved.

Lithonia RSX1 Area LED  
 Rev. 01/28/25  
 Page 5 of 9





**Job Name:**  
 Pennsylvania Avenue Parking  
 Contractor: Phaze Electric (Madison)

**Catalog Number:**  
 RSX1 LED P3 \*\*K R5 MVOLT SPA  
 \*FINISH\*  
 Notes:

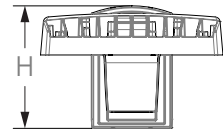
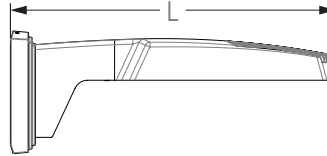
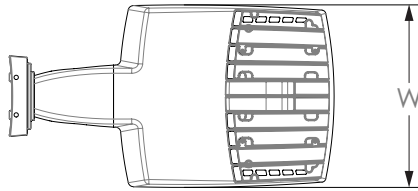
Type:

**OA5**

ELL25-136082

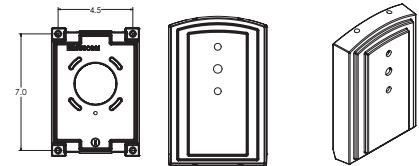
## Dimensions

### RSX1 with Wall Bracket (WBA)

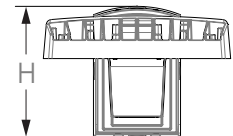
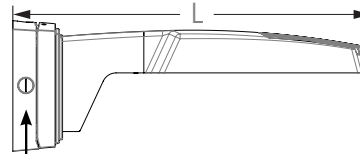
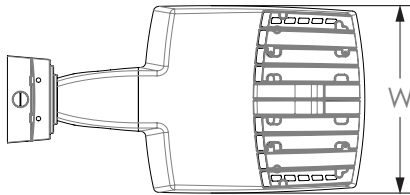


Length: 23.6" (59.9 cm)  
 Width: 13.3" (33.8 cm)  
 Height: 3.0" (7.6 cm) Main Body  
 8.9" (22.6 cm) Arm

### Wall Bracket (WBA) Mounting Detail

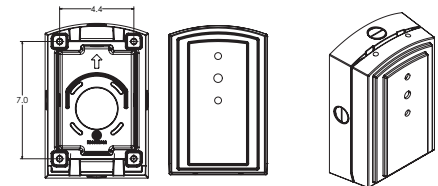


### RSX1 with Wall Bracket with Surface Conduit Box (WBASC)



3/4" NPT taps with plugs - Qty (4) provided

### Surface Conduit Box (SCB) Mounting Detail



Length: 25.3" (64.3 cm)  
 Width: 13.3" (33.8 cm)  
 Height: 3.0" (7.6 cm) Main Body  
 9.2" (23.4 cm) Arm





**Job Name:**  
 Pennsylvania Avenue Parking  
 Contractor: Phaze Electric (Madison)

**Catalog Number:**  
 RSX1 LED P3 \*\*K R5 MVOLT SPA  
**\*FINISH\***  
 Notes:

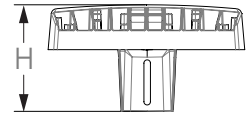
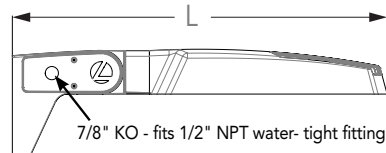
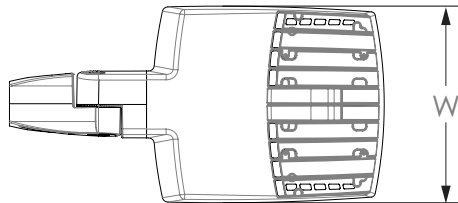
Type:

**OA5**

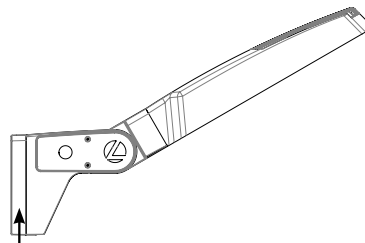
ELL25-136082

## Dimensions

### RSX1 with Adjustable Tilt Arm - Square or Round Pole (AASP or AARP)



Length: 25.3" (65.3 cm) **AASP**  
 26.3" (66.8 cm) **AARP**  
 Width: 13.3" (33.8 cm)  
 Height: 3.0" (7.6 cm) Main Body  
 7.2" (18.2 cm) Arm



**NOTE:**  
 RPA - Round Pole mount can also be used to mount on square poles by omitting the round pole adapter plate shown here.

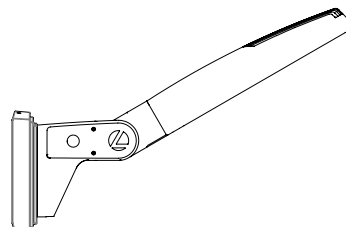
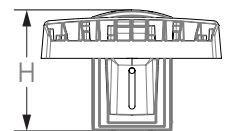
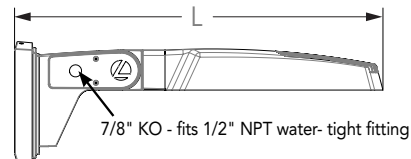
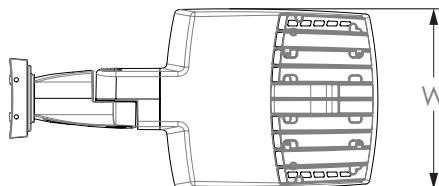


#### Notes

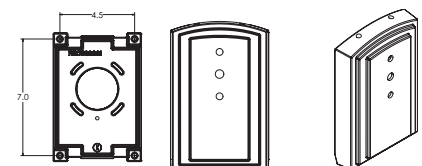
AASP: Requires 3.0" min. square pole for 1 at 90°. Requires 3.5" min. square pole for mounting 2, 3, 4 at 90°.

AARP: Requires 3.2" min. dia. round pole for 2, 3, 4 at 90°. Requires 3.0" min. dia. round pole for mounting 1 at 90°, 2 at 180°, 3 at 120°.

### RSX1 with Adjustable Tilt Arm with Wall Bracket (AAWB)



#### Wall Bracket (WBA) Mounting Detail



Length: 27.1" (68.8 cm)  
 Width: 13.3" (33.8 cm)  
 Height: 3.0" (7.6 cm) Main Body  
 8.9" (22.6 cm) Arm



One Lithonia Way • Conyers, Georgia 30012 • Phone: 1-800-705-SERV (7378) • [www.acuitybrands.com](http://www.acuitybrands.com)  
 © 2018-2025 Acuity Brands Lighting, Inc. All rights reserved.

Lithonia RSX1 Area LED  
 Rev. 01/28/25  
 Page 7 of 9



**Job Name:**  
 Pennsylvania Avenue Parking  
 Contractor: Phaze Electric (Madison)

**Catalog Number:**

RSX1 LED P3 \*\*K R5 MVOLT SPA

\*FINISH\*

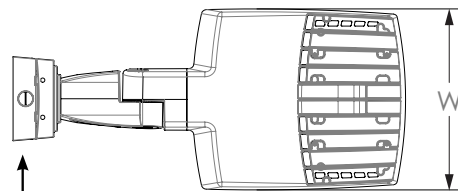
Notes:

**Type:****OA5**

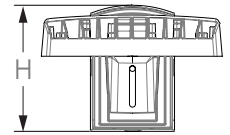
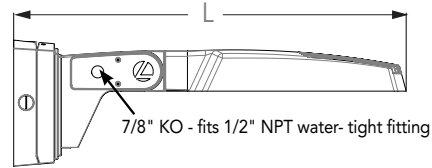
ELL25-136082

## Dimensions

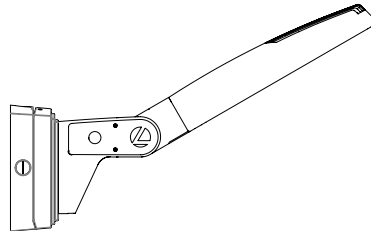
### RSX1 with Adjustable Tilt Arm with Wall Bracket and Surface Conduit Box (AAWSC)



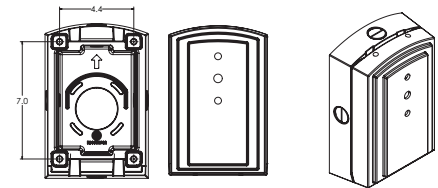
3/4" NPT taps  
 with plugs - Qty (4)  
 provided



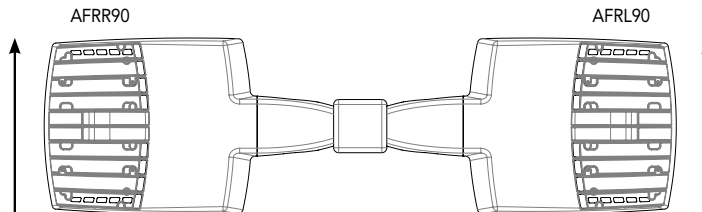
Length: 28.8" (73.2 cm)  
 Width: 13.3" (33.8 cm)  
 Height: 3.0" (7.6 cm) Main Body  
 9.2" (23.4 cm) Arm



### Surface Conduit Box (SCB) Mounting Detail



### Automotive Front Row - Rotated Optics (AFRL90/R90)



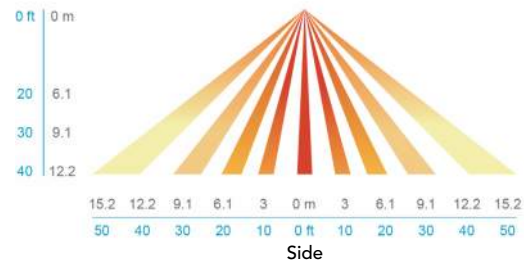
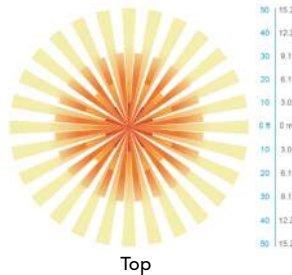
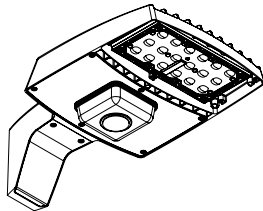
(Example: 2@180 - arrows indicate direction of light exiting the luminaire)



## nLight Control - Sensor Coverage and Settings

### nLight Sensor Coverage Pattern

#### NLTAIR2 PIRHN



Motion Sensor Default Settings - Option PIRHN						
Option	Dimmed State (unoccupied)	High Level (when occupied)	Photocell Operation	Dwell Time (occupancy time delay)	Ramp-up Time (from unoccupied to occupied)	Ramp-down Time (from occupied to unoccupied)
NLTAIR2 PIRHN	Approx. 30% Output	100% Output	Enabled @ 1.5FC	7.5 minutes	3 seconds	5 minutes

\*Note: NLTAIR2 PIRHN default settings including photocell set-point, high/low dim rates, and occupancy sensor time delay are all configurable using the Clarity Pro App. Sensor coverage pattern shown with luminaire at 0°. Sensor coverage pattern is affected when luminaire is tilted.

## FEATURES & SPECIFICATIONS

### INTENDED USE

The RSX LED area family is designed to provide a long-lasting, energy-efficient solution for the one-for-one replacement of existing metal halide or high pressure sodium lighting. The RSX1 delivers 7,000 to 17,000 lumens and is ideal for replacing 70W to 400W HID pole-mounted luminaires in parking lots and other area lighting applications.

### CONSTRUCTION

The RSX LED area luminaire features a rugged die-cast aluminum main body that uses heat-dissipating fins and flow-through venting to provide optimal thermal management that both enhances LED performance and extends component life. Integral "no drill" mounting arm allows the luminaire to be mounted on existing pole drillings, greatly reducing installation labor. The light engines and housing are sealed against moisture and environmental contaminants to IP66. The low-profile design results in a low EPA, allowing pole optimization. All mountings are rated for minimum 1.5 G vibration load per ANSI C136.31. 3G Mountings: Include SPA, RPA, MA, IS, AASP, and AARP rated for 3G vibration. 1.5G Mountings: Include WBA, WBASC, AAWB and AAWSC rated for 1.5G vibration.

### FINISH

Exterior parts are protected by a zinc-infused Super Durable TGIC thermoset powder coat finish that provides superior resistance to corrosion and weathering. A tightly controlled multi-stage process ensures superior adhesion as well as a minimum finish thickness of 3 mils. The result is a high-quality finish that is warranted not to crack or peel.

### COASTAL CONSTRUCTION (CCE)

Optional corrosion-resistant construction is engineered with added corrosion protection in materials and/or pre-treatment of base material under super durable paint. Provides additional corrosion protection for applications near coastal areas. Finish is salt spray tested to over 5,000 hours per ASTM B117 with scribe rating of 10. Additional lead times apply.

### OPTICS

Precision acrylic refractive lenses are engineered for superior application efficiency, distributing the light to where it is needed most. Available in short and wide pattern distributions including Type 2, Type 3, Type 3S, Type 4, Type 4S, Type 5, Type 5S, AFR (Automotive Front Row), and AFR rotated AFR90 and ARFL90.

### ELECTRICAL

Light engine(s) configurations consist of high-efficacy LEDs mounted on metal-core circuit boards and aluminum heat sinks to maximize heat dissipation. Light engines are IP66 rated. LED lumen maintenance is >L92/100,000 hours. CCT's of 3000K, 4000K and 5000K (minimum 70 CRI) are available. Fixtures ship standard with 0-10v dimming driver. Class 1 electronic drivers ensure system power factor >90% and THD <20%. Easily serviceable 10kV surge protection device meets a minimum Category C Low operation (per ANSI/IEEE C62.41.2).

### STANDARD CONTROLS

The RSX LED area luminaire has a wide assortment of control options. Dusk to dawn controls include MVOLT and 347V button-type photocells and NEMA twist-lock photocell receptacles.

### nLIGHT AIR CONTROLS

The RSX LED area luminaire is also available with nLight® AIR for the ultimate in wireless control. This powerful controls platform provides out-of-the-box basic motion sensing with photocontrol functionality and is suitable for mounting heights up to 40 feet. No commissioning is required when using factory default settings that provide basic stand-alone motion occupancy dimming that is switched on and off with a built-in photocell. See chart above for motion sensor default out-of-box settings. For more advanced wireless functionality, such as group dimming, nLight AIR can be commissioned using a smartphone and the easy-to-use CLAIRITY app. nLight AIR equipped luminaires can be grouped, resulting in motion sensor and photocell group response without the need for additional equipment. Scheduled dimming with motion sensor over-ride can be achieved when used with the nLight Eclipse. Additional information about nLight Air can be found [here](#).

### INSTALLATION

Integral "no-drill" mounting arm allows for fast, easy mounting using existing pole drillings. Select the "SPA" option for square poles and the "RPA" option to mount to round poles. Note, the RPA mount can also be used for mounting to square poles by omitting the RPA adapter plate. Select the "MA" option to attach the luminaire to a 2 3/8" horizontal mast arm or the "IS" option for an adjustable slipfitter that mounts on a 2 3/8" OD tenon. The adjustable slipfitter has an integral junction box and offers easy installation. Can be tilted up to 90° above horizontal. Additional mountings are available including a wall bracket, adjustable tilt arm for direct-to-pole and wall and a surface conduit box for wall mount applications.

### LISTINGS

CSA Certified to meet U.S. and Canadian standards. Suitable for wet locations. Rated for -40°C minimum ambient. DesignLights Consortium® (DLC) Premium qualified product and DLC qualified product. Not all versions of this product may be DLC Premium qualified or DLC qualified. Please check the DLC Qualified Products List at [www.designlights.org/QPL](http://www.designlights.org/QPL) to confirm which versions are qualified.

International Dark-Sky Association (IDA) Fixture Seal of Approval (FSA) is available for all products on this page utilizing 3000K color temperature only. U.S. Patent No. D882, 146S


### GOVERNMENT PROCUREMENT

BAA – Buy America(n) Act: Product with the BAA option qualifies as a domestic end product under the Buy American Act as implemented in the FAR and DFARS. Product with the BAA option also qualifies as manufactured in the United States under DOT Buy America regulations. BABA – Build America Buy America: Product with the BAA option also qualifies as produced in the United States under the definitions of the Build America, Buy America Act. Please refer to [www.acuitybrands.com/buy-american](http://www.acuitybrands.com/buy-american) for additional information.

### WARRANTY

5-year limited warranty. This is the only warranty provided and no other statements in this specification sheet create any warranty of any kind. All other express and implied warranties are disclaimed. Complete warranty terms located at: [www.acuitybrands.com/support/warranty/terms-and-conditions](http://www.acuitybrands.com/support/warranty/terms-and-conditions)

**Note:** Actual performance may differ as a result of end-user environment and application. All values are design or typical values, measured under laboratory conditions at 25 °C. Specifications subject to change without notice.

Submitted by Enterprise Lighting, LTD. <div data-bbox="191 78 451 182">  <div> Enterprise Ligh  Manufacturers' Represent </div> </div> <div data-bbox="456 78 852 151"> <b>Job Name:</b>  Pennsylvania Avenue Parking  Contractor: Phaze Electric (Madison) </div>	<b>Catalog Number:</b> SSS 23 4C DM19AS *FINISH*  <b>Notes:</b>	<b>Type:</b> <b>OA5</b>  ELL25-136082
---	--	--



## FEATURES & SPECIFICATIONS

**INTENDED USE** — These specifications are for USA standards only. Square Straight Steel is a general purpose light pole for up to 39-foot mounting heights. This pole provides a robust yet cost effective option for mounting area lights and floodlights.

### CONSTRUCTION

**Pole Shaft:** The pole shaft is of uniform dimension and wall thickness and is made of a weldable-grade, hot-rolled, commercial-quality steel tubing with a minimum yield of 55 KSI (11-gauge, 0.120"), or 50 KSI (7-gauge, 0.179"). Shaft is one-piece with a full-length longitudinal high-frequency electric resistance weld. Uniformly square in cross-section with flat sides, small corner radii and excellent torsional qualities. Available shaft widths are 4", 5" and 6".

**Pole Top:** Options include 4" tenon top, drilled for side mount fixture, tenon with drilling (includes extra handhole) and open top. Side drilled and open top poles include a removable top cap.

**Handhole:** A reinforced handhole with grounding provision is provided at 18" from the base on side A. Positioning the handhole lower may not be possible and requires engineering review; consult Tech Support-Outdoor for further information. Every handhole includes a cover and cover attachment hardware. The handhole has a nominal dimension of 2.5" x 5".

**Base Cover:** A durable ABS plastic two-piece full base cover, finished to match the pole, is provided with each pole assembly. Additional base cover options are available upon request.

**Anchor Base/Bolts:** Anchor base is fabricated from steel that meets ASTM A36 standards and can be altered to match existing foundations; consult factory for modifications. Anchor bolts are manufactured to ASTM F1554 Standards grade 55, (55 KSI minimum yield strength and tensile strength of 75-95 KSI). Top threaded portion (nominal 12") is hot-dipped galvanized per ASTM A-153.

**HARDWARE** — All structural fasteners are high-strength galvanized carbon steel. All non-structural fasteners are galvanized or zinc-plated carbon steel or stainless steel.

**FINISH** — Extra durable painted finish is coated with TGIC (Triglycidyl Isocyanurate) Polyester powder that meets 5A and 5B classifications of ASTM D3359. Powder-coat finishes include Dark Bronze, White, Black, and Natural Aluminum colors. Architectural Colors and Special Finishes are available by quote and include, but are not limited to Paint over Hot-dipped Galvanized, RAL Colors, Custom Colors and Extended Warranty Finishes.

### GOVERNMENT PROCUREMENT

**BAA** — Buy America(n) Act: Product qualifies as a domestic end product under the Buy American Act as implemented in the FAR and DFARS. Product also qualifies as manufactured in the United States under DOT Buy America regulations.

**BABA** — Build America Buy America: Product qualifies as produced in the United States under the definitions of the Build America, Buy America Act.

Please refer to [www.acuitybrands.com/buy-american](http://www.acuitybrands.com/buy-american) for additional information.

**INSTALLATION** — **Do not** erect poles without having fixtures installed. Factory-supplied templates must be used when setting anchor bolts. Lithonia Lighting will not accept claim for incorrect anchorage placement due to failure to use Lithonia Lighting factory templates. If poles are stored outside, all protective wrapping must be removed immediately upon delivery to prevent finish damage. Lithonia Lighting is not responsible for the foundation design.

**WARRANTY** — 1-year limited warranty. This is the only warranty provided and no other statements in this specification sheet create any warranty of any kind. All other express and implied warranties are disclaimed. Complete warranty terms located at: [www.acuitybrands.com/support/warranty/terms-and-conditions](http://www.acuitybrands.com/support/warranty/terms-and-conditions)

**NOTE:** Actual performance may differ as a result of end-user environment and application. Specifications subject to change without notice.

Catalog Number
Notes
Type



### Anchor Base Poles

**SSS**

### SQUARE STRAIGHT STEEL





## SSS Square Straight Steel Poles

**ORDERING INFORMATION** Lead times will vary depending on options selected. Consult with your sales representative. **Example:** SSS 20 5C DM28AS DDBXD

SSS	23'				**VERIFY**
Series	Nominal fixture mounting height	Nominal shaft base size/wall thickness <sup>1</sup>	Mounting <sup>2</sup>	Options	Finish
SSS	10'-39' (for 1/2 ft increments, add -6 to the pole height. <b>Ex:</b> 20-6 equals 20ft 6in.)  (See technical information table for complete ordering information.)	<b>4C 4" 11g (0.120")</b> 4G 4" 7g (0.179") 5C 5" 11g (0.120") 5G 5" 7g (0.179") 6G 6" 7g (0.179")  (See technical information table for complete ordering information.)	<b>Tenon mounting</b> PT Open top (includes top cap) T20 2-3/8" O.D. (2" NPS) T25 2-7/8" O.D. (2-1/2" NPS) T30 3-1/2" O.D. (3" NPS) T35 4" O.D. (3-1/2" NPS) <b>DSX/RSX/OMERO™ Drill mounting<sup>3</sup></b> <b>DM19AS 1 at 90°</b> DM28AS 2 at 180° DM29AS 2 at 90° DM39AS 3 at 90° DM49AS 4 at 90° <b>RAD drill mounting<sup>3</sup></b> DM19RAD 1 at 90° DM28RAD 2 at 180° DM29RAD 2 at 90° DM39RAD 3 at 90° DM49RAD 4 at 90° <b>ESX Drill mounting<sup>3</sup></b> DM19ESX 1 at 90° DM28ESX 2 at 180° DM29ESX 2 at 90° DM39ESX 3 at 90° DM49ESX 4 at 90° <b>Arm drill mounting</b> To be added as series + drill orientations <b>EX:</b> SMAC19 for SMAC arm drilling 1 at 90°	<b>Shipped installed</b> VD Vibration damper <sup>4</sup> JHxy J-Hook for cable strain relief <sup>5</sup> HAxy Horizontal arm bracket (1 fixture) <sup>5,6</sup> FDLxy Festoon outlet less electrical <sup>5,7</sup> FDLGFCIxy Festoon with GFCI outlet and in-use cover <sup>5,8</sup> CPL12/xy 1/2" coupling <sup>5</sup> CPL34/xy 3/4" coupling <sup>5</sup> CPL1/xy 1" coupling <sup>5</sup> NPL12/xy 1/2" threaded nipple <sup>5</sup> NPL34/xy 3/4" threaded nipple <sup>5</sup> NPL1/xy 1" threaded nipple <sup>5</sup> EHHxy Extra handhole <sup>5,9</sup>  STLHHC Steel handhole cover (standard is plastic, finish is smooth) <sup>10</sup> FBCSTL2PC 2 Piece steel base cover (standard is plastic) <sup>10</sup> IC Interior coating <sup>11</sup> L/AB Less anchor bolts (Include when anchor bolts are not needed) TP Tamper resistant handhole cover fasteners NEC NEC 410.30 compliant gasketed handhole (Not UL Labeled) UL UL listed with label (Includes NEC compliant cover) BAA Buy America(n) Act Compliant <sup>12</sup> VM/original order# Match pole to prior order or project <sup>13</sup>	<b>Super durable paint colors</b> DDBXD Dark bronze DBLXD Black DNAXD Natural aluminum DWHXD White DSSXD Sandstone DGCKD Charcoal gray DTGXD Tennis green DBRXD Bright red DSBXD Steel blue DDBTXD Textured dark bronze DBLBXD Textured black DNATXD Textured natural aluminum DWHGXD Textured white  <b>Other finishes</b> GALV Galvanized finish <b>Architectural colors and special finishes<sup>14</sup></b> [PAINT] GALV Paint over galvanizing VP30 3 year warranty extension VP53 5 year warranty extension RAL#### Use designated Lithonia Lighting nomenclature in <a href="#">brochure</a>  Custom color Nomenclature assigned through Customer Care "Custom Color Process"

Accessories: Order as separate catalog number.	
PL DT20	Plugs for ESX drillings
PL DT8	Plugs for DMxxAS drillings
FVD xxFT	Field installed vibration damper (snake style)

### NOTES:

- Wall thickness will be signified with a "C" (11 Gauge) or a "G" (7-Gauge) in nomenclature. "C" - 0.120" | "G" - 0.179".
- PT open top poles include top cap. When ordering tenon mounting and drill mounting for the same pole, specify as drilling option/tenon option. The combination includes a required extra handhole.  
*Example: DM28/T20.*
- Refer to the fixture spec sheet for the correct drilling template pattern and orientation compatibility.
- On 4" and 5" poles, VD cannot be installed if provisions (EHH, FDL, NPL, CPL) are located higher than 2/3 of the pole's total height.  
*Example: Pole height is 25ft. A provision cannot be placed above 16ft.*
- Specify location and orientation when ordering option.  
**For "x":** Specify the height above the base of pole in feet or feet and inches; separate feet and inches with a ".".  
*Example: 5ft = 5 and 20ft 3in = 20-3*  
**For "y":** Specify orientation from handhole (A,B,C,D) Refer to the Handhole Orientation diagram below.  
*Example: 1/2" coupling at 5' 8", orientation C = CPL12/5-8C*
- Horizontal arm is 18" x 2-3/8" O.D. tenon standard, with radius curve providing 12" rise and 2-3/8" O.D. If ordering two horizontal arm at the same height, specify with HAxyy.  
*Example: HA20BD.*
- FDL does not come with GFCI outlet or handhole cover. These must be supplied by contractor or electrician.
- Festoon option that comes with GFCI and in-use cover. GFCI and in-use cover ship separately from pole.
- Combination of tenon-top and drill mount includes extra handhole. EHH includes cover.
- Plastic hand hole cover and base covers come standard with all poles. Items ship separately. Additional parts can be ordered as replacements.
- N/A with GALV.
- Use when mill certifications are required.
- Must add original order number. Not for replacement parts or post sales issues, contact tech support or post sales teams. VM is used to ensure poles match in appearance exactly from order to order, on a single project site. A common use case would be a multi-phase project with multiple orders. *Example: VM/010-36784*
- Must be quoted through AQD. Finishes do not require RFA. RAL colors available are shown in "Architectural Colors brochure". Lead times may be extended up to 2 weeks due to paint procurement.

## SSS Square Straight Steel Poles

TECHNICAL INFORMATION — EPA (ft²) with 1.3 gust											
Catalog Number	Nominal Shaft Length (ft.)*	Pole Shaft Size (Base in. x Top in. x ft.)	Wall thick (in.)	Gauge	EPA (ft²) with 1.3 gust						Approximate ship weight (lbs.)
					80 MPH	Max. weight	90 MPH	Max. weight	100 MPH	Max. weight	
SSS 10 4C	10	4.0 x 10.0	0.120"	11	30.6	765	23.8	595	18.9	473	75
SSS 12 4C	12	4.0 x 12.0	0.120"	11	24.4	610	18.8	470	14.8	370	90
SSS 14 4C	14	4.0 x 14.0	0.120"	11	19.9	498	15.1	378	11.7	293	100
SSS 16 4C	16	4.0 x 16.0	0.120"	11	15.9	398	11.8	295	8.9	223	115
SSS 18 4C	18	4.0 x 18.0	0.120"	11	12.6	315	9.2	230	6.7	168	125
SSS 20 4C	20	4.0 x 20.0	0.120"	11	9.6	240	6.7	167	4.5	150	140
SSS 20 4G	20	4.0 x 20.0	0.179"	7	14	350	11	275	8	200	198
SSS 20 5C	20	5.0 x 20.0	0.120"	11	17.7	443	12.7	343	9.4	235	185
SSS 20 5G	20	5.0 x 20.0	0.179"	7	28.1	703	21.4	535	16.2	405	265
SSS 25 4C	25	4.0 x 25.0	0.120"	11	4.8	150	2.6	100	1	50	170
SSS 25 4G	25	4.0 x 25.0	0.179"	7	10.8	270	7.7	188	5.4	135	245
SSS 25 5C	25	5.0 x 25.0	0.120"	11	9.8	245	6.3	157	3.7	150	225
SSS 25 5G	25	5.0 x 25.0	0.179"	7	18.5	463	13.3	333	9.5	238	360
SSS 30 4G	30	4.0 x 30.0	0.179"	7	6.7	168	4.4	110	2.6	65	295
SSS 30 5C	30	5.0 x 30.0	0.120"	11	4.7	150	2	50	--	--	265
SSS 30 5G	30	5.0 x 30.0	0.179"	7	10.7	267	6.7	167	3.9	100	380
SSS 30 6G	30	6.0 x 30.0	0.179"	7	19	475	13.2	330	9	225	520
SSS 35 5G	35	5.0 x 35.0	0.179"	7	5.9	150	2.5	100	--	--	440
SSS 35 6G	35	6.0 x 35.0	0.179"	7	12.4	310	7.6	190	4.2	105	540
SSS 39 6G	39	6.0 x 39.0	0.179"	7	7.2	180	3	75	--	--	605

NOTE: EPA values are based ASCE 7-93 wind map.  
\* For 1/2 ft increments, add -6 to the pole height. Ex: 20-6 equals 20ft 6in.

TECHNICAL INFORMATION — EPA (ft²) WITH 3-SECOND GUST PER AASHTO 2013																	
Series	Mounting Height (ft.)*	Shaft Base Size	90 MPH	Max. weight	100 MPH	Max. weight	110 MPH	Max. weight	120 MPH	Max. weight	130 MPH	Max. weight	140 MPH	Max. weight	150 MPH	Max. weight	Approximate ship weight (lbs.)
SSS	10	4C	20	500	16	400	13	325	10.5	263	8.5	213	7	175	6	150	75
SSS	12	4C	16	400	13	325	10	250	8	200	6.5	163	5	125	4	100	90
SSS	14	4C	13.5	338	10	250	7.5	188	6	150	4.5	113	3.5	88	2.5	63	100
SSS	16	4C	10.5	263	7.5	188	5.5	138	4	100	3	75	1.5	38	1	25	115
SSS	18	4C	8	200	5.5	138	4	100	2.5	63	1.5	38	0.5	13	-	-	125
SSS	18	4G	13	325	9.5	238	7	175	5	125	3.5	88	2.5	63	1.5	38	185
SSS	18	5C	13	325	9.5	238	6.5	163	4.5	113	3	75	1.5	38	.5	13	170
SSS	20	4C	6	150	4	100	2.5	63	1	25	-	-	-	-	-	-	140
SSS	20	4G	10.5	263	7.5	188	5.5	138	3.5	88	2	50	1	25	-	-	205
SSS	20	5C	10	250	7	175	4.5	113	2.5	63	1	25	-	-	-	-	185
SSS	20	5G	20	500	15	375	11.5	288	8.5	213	6	150	4.5	113	3	75	265
SSS	25	4C	2	50	0.5	13	-	-	-	-	-	-	-	-	-	-	170
SSS	25	4G	5.5	138	3	75	1.5	38	-	-	-	-	-	-	-	-	245
SSS	25	5C	4.5	113	2	50	-	-	-	-	-	-	-	-	-	-	225
SSS	25	5G	12	300	8.5	213	5.5	138	3	75	1.5	38	-	-	-	-	360
SSS	25	6G	19	475	13.5	338	9	225	5.5	138	3	75	1	25	-	-	445
SSS	30	4G	1.5	38	-	-	-	-	-	-	-	-	-	-	-	-	291
SSS	30	5C	-	-	-	-	-	-	-	-	-	-	-	-	-	-	265
SSS	30	5G	6.5	163	3.5	88	1	25	-	-	-	-	-	-	-	-	380
SSS	30	6G	11	275	6	150	2.5	63	-	-	-	-	-	-	-	-	520
SSS	35	5G	2	50	-	-	-	-	-	-	-	-	-	-	-	-	440
SSS	35	6G	4	100	-	-	-	-	-	-	-	-	-	-	-	-	540
SSS	39	6G	-	-	-	-	-	-	-	-	-	-	-	-	-	-	605

NOTE: AASHTO 2013 design criteria is the most common EPA and uses wind map ASCE7-05. Please review the project Spec document to determine the correct design criteria for the poles on your jobsite.  
\*For 1/2 ft increments, add -6 to the pole height. Ex: 20-6 equals 20ft 6in.





**Job Name:**  
 Pennsylvania Avenue Parking  
 Contractor: Phaze Electric (Madison)

**Catalog Number:**  
 SSS 23 4C DM19AS \*FINISH\*

Notes:

**Type:**

**OA5**

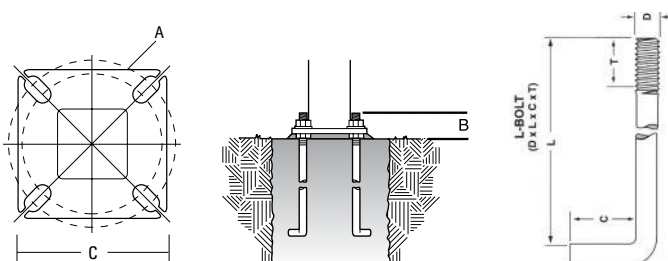
ELL25-136082

## SSS Square Straight Steel Poles

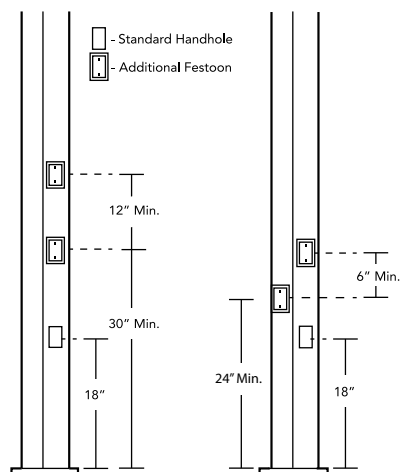
### ANCHORAGE AND TEMPLATE INFORMATION

Shaft base size	Bolt circle A	Bolt projection B	Base square C	Base plate thickness	Template description	Anchor bolt description	Bolt size (in.) D x L x C	Anchor bolt/Template Combo
4"C	8" – 9"	3.25"– 3.75"	8"– 8.25"	0.75"	ABTEMPLATE PJ50004	AB18-0	3/4 x 18 x 3	ABSSS-4C
4"G	8" – 9"	3.38"– 3.75"	8"– 8.25"	0.875"	ABTEMPLATE PJ50004	AB30-0	3/4 x 30 x 3	ABSSS-4G
5"	10" – 12"	3.5"– 4"	11"	1"	ABTEMPLATE PJ50010	AB36-0	1 x 36 x 4	ABSSS-5
6"	11" – 13"	4"– 4.50"	12.5"	1"	ABTEMPLATE PJ50011	AB36-0	1 x 36 x 4	N/A

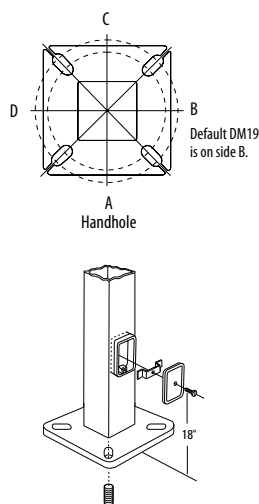
### BASE & BOLT DETAIL



### SQUARE STEEL HANDHOLE AND FESTOON - PLACEMENT RULES



### HANDHOLE DETAIL



### IMPORTANT INSTALLATION NOTES:

- **Do not** erect poles without having fixtures installed.
- Factory-supplied templates must be used when setting anchor bolts. Lithonia Lighting will not accept claim for incorrect anchorage placement due to failure to use Lithonia Lighting factory templates.
- If poles are stored outside, all protective wrapping must be removed immediately upon delivery to prevent finish damage.
- Lithonia Lighting is not responsible for the foundation design.
- Bolt circles have +/- 1/2" tolerance.

**CAUTION:** These specifications are intended for general purposes only. Lithonia Lighting reserves the right to change material or design, without prior notice, in a continuing effort to upgrade its products.



POLE-SSS