

6701 McKee Road / 6702 Mader Drive Mixed Use

Common Council Presentation
Context Map



6701 McKee Road / 6702 Mader Drive Mixed Use

Common Council Presentation
Context Map



NORTHEAST CORNER - McKEE RD (LOOKING WEST)



NORTHWEST CORNER - McKEE RD (LOOKING SOUTHEAST)



NORTHEAST CORNER - McKEE RD & MAPLE GROVE DR (SITE CORNER)



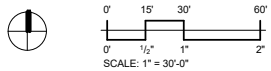
SOUTHEAST CORNER - MAPLE GROVE DR (LOOKING TOWARDS MADER DR)

6701 McKee Road / 6702 Mader Drive Mixed Use

Common Council Presentation
Site Plan



1 ARCHITECTURAL SITE PLAN
SCALE: 1" = 30'-0"





McKEE ROAD PERSPECTIVE -BEFORE



JLA
ARCHITECTS



JLA
ARCHITECTS



TERRACE VIEW FROM 3RD FLOOR BALCONY - BEFORE



JLA
ARCHITECTS



JLA
ARCHITECTS



MAPLE GROVE AND MADER DR INTERSECTION - BEFORE



JLA
ARCHITECTS



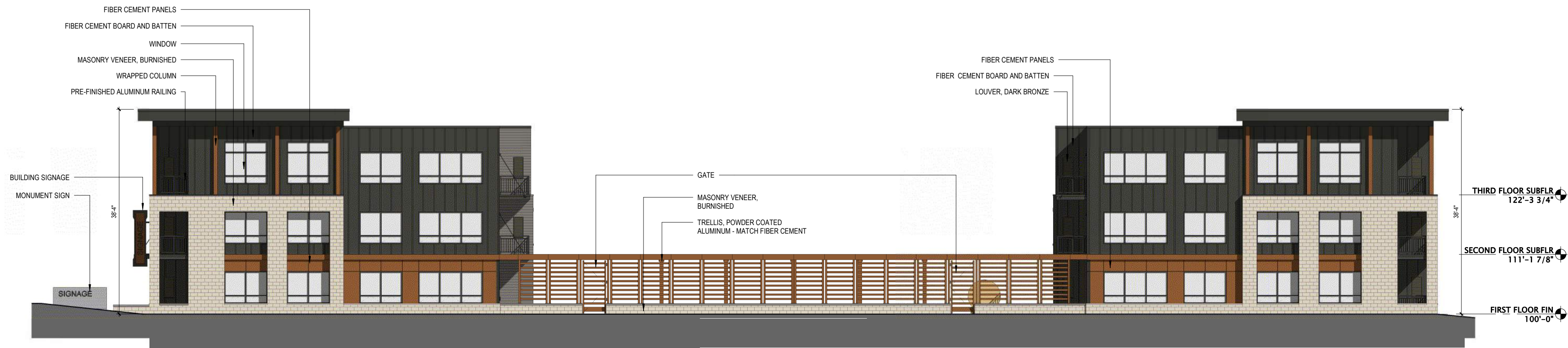
JLA
ARCHITECTS



JLA
ARCHITECTS

6701 McKee Road / 6702 Mader Drive Mixed Used

Common Council Presentation
McKee Rd Elevation



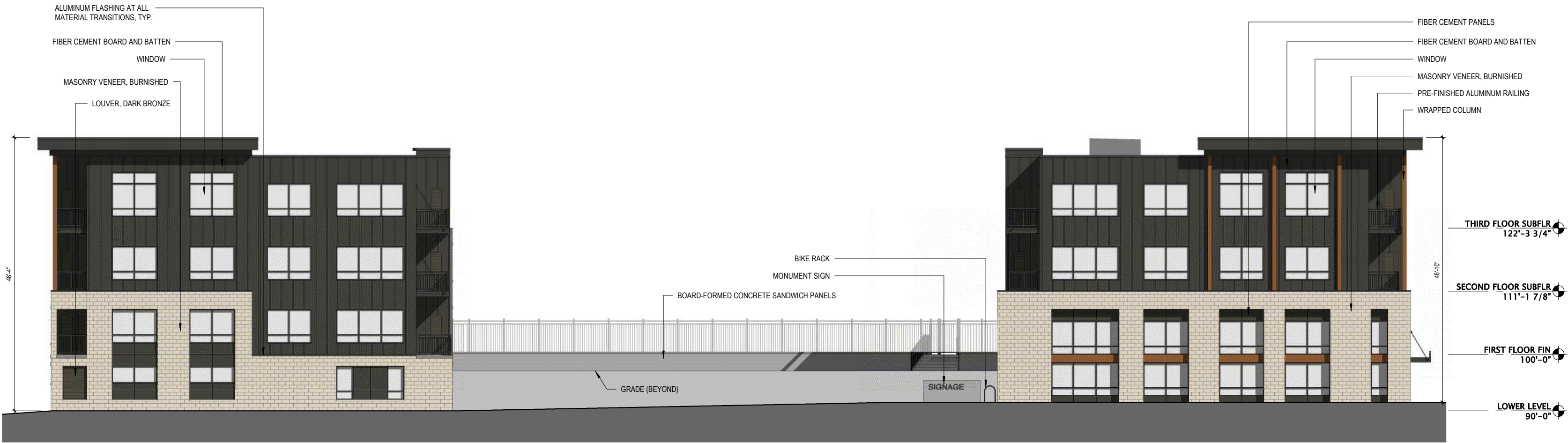
6701 McKee Road / 6702 Mader Drive Mixed Use

Common Council Presentation
Maple Grove Dr Elevation



6701 McKee Road / 6702 Mader Drive Mixed Used

Common Council Presentation Mader Dr. Elevation



6701 McKee Road / 6702 Mader Drive Mixed Used

Common Council Presentation
A2 West Elevation





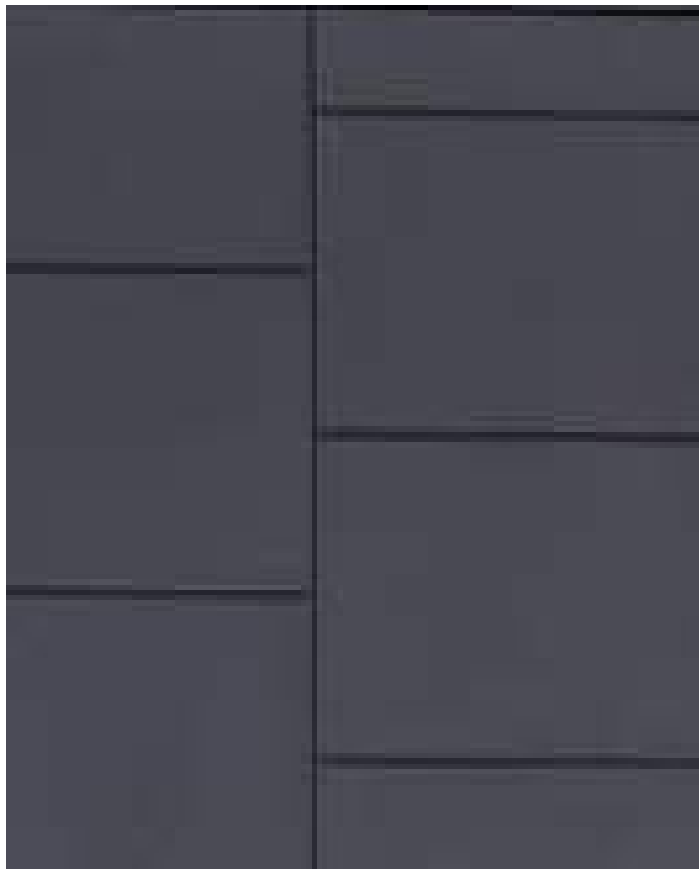
DARK BRONZE FINISH:
WINDOWS, LOUVERS, COPING,
RAILINGS, PICKET FENCES



FIBER CEMENT LAP SIDING:
AGED PEWTER



METALIC BRONZE: FIBER CEMENT
CLADDING AND ARCHITECTURAL
SCREEN POWDER COAT



FIBER CEMENT PANEL:
IRON GRAY



CMU: BURNISHED CREAM COLOR



FIBER CEMENT BOARD AND BATTEN:
IRON GRAY



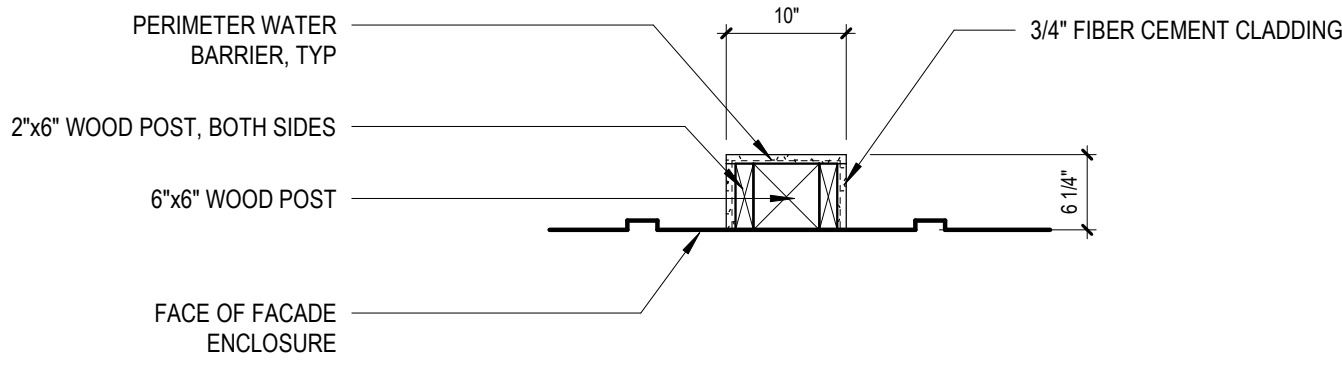
CMU: SPLITFACE CREAM COLOR



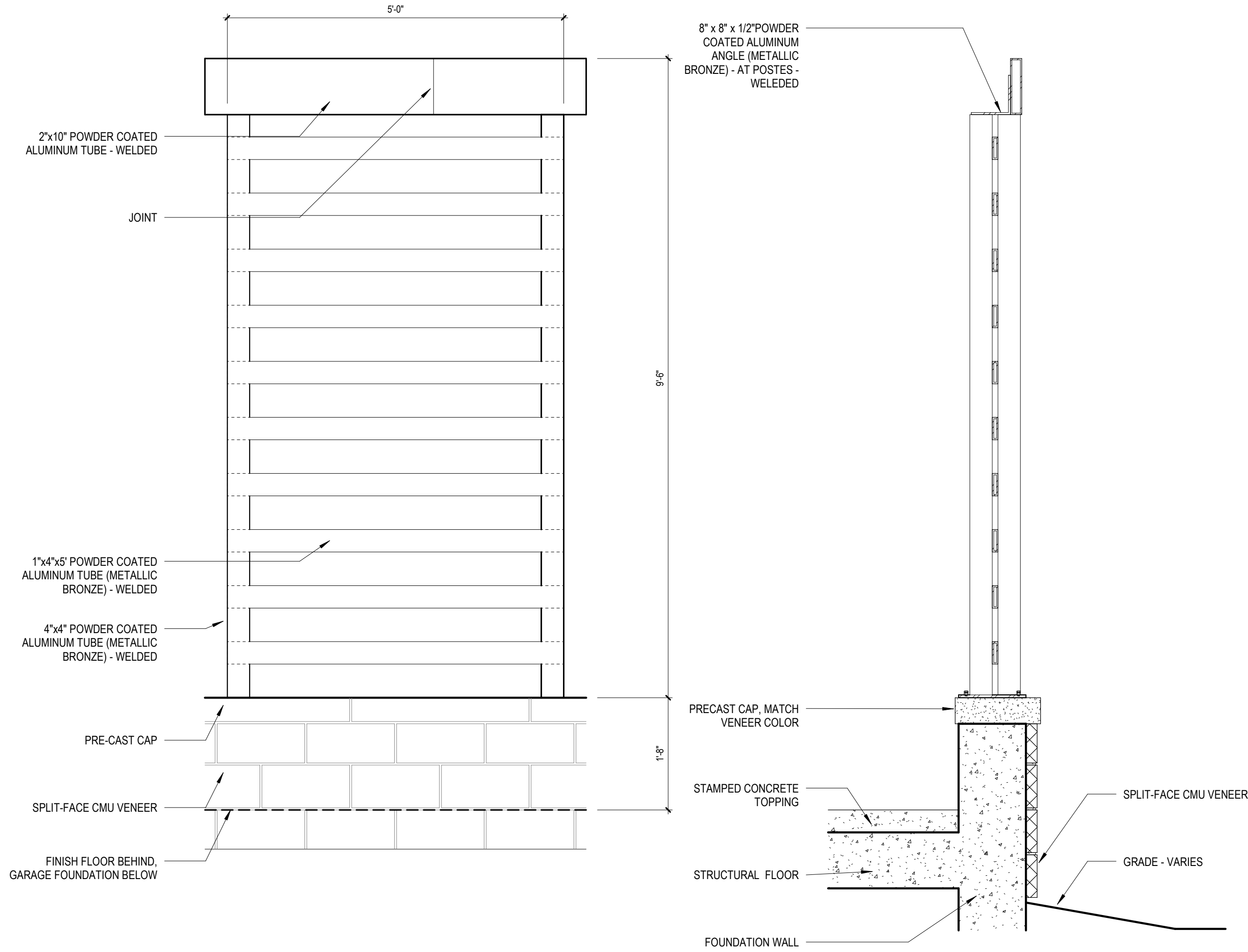
PRECAST CONCRETE: LINTEL, SILL,
WALL CAPS



BOARD FORMED CONCRETE

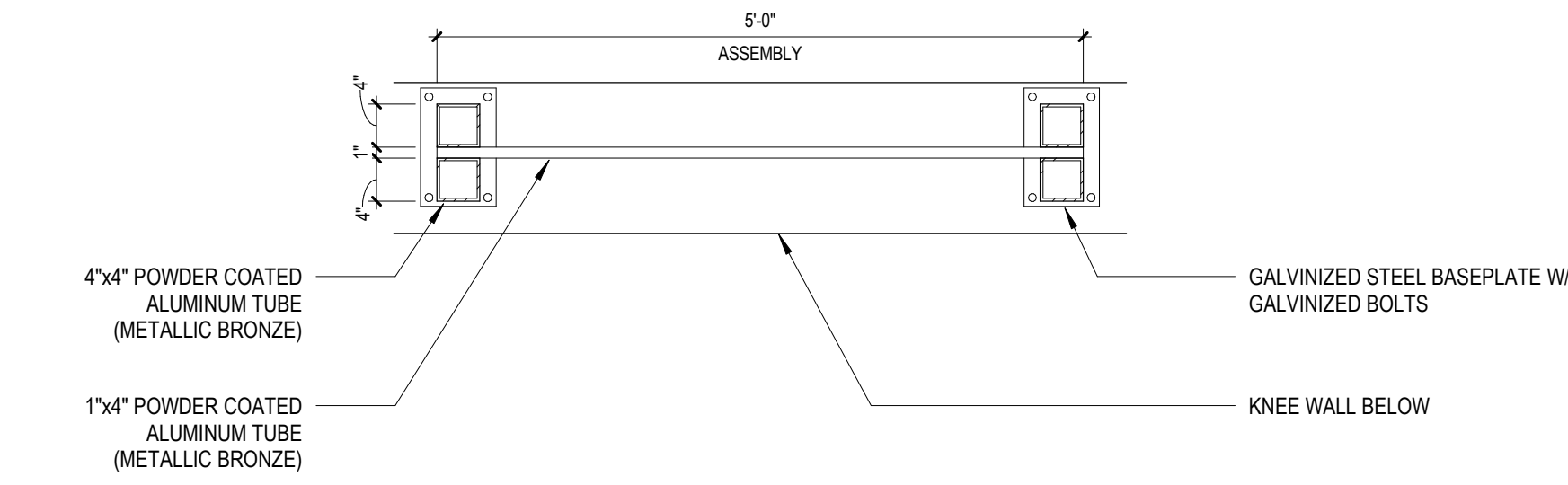


PLAN DETAIL: CLAD PILASTER

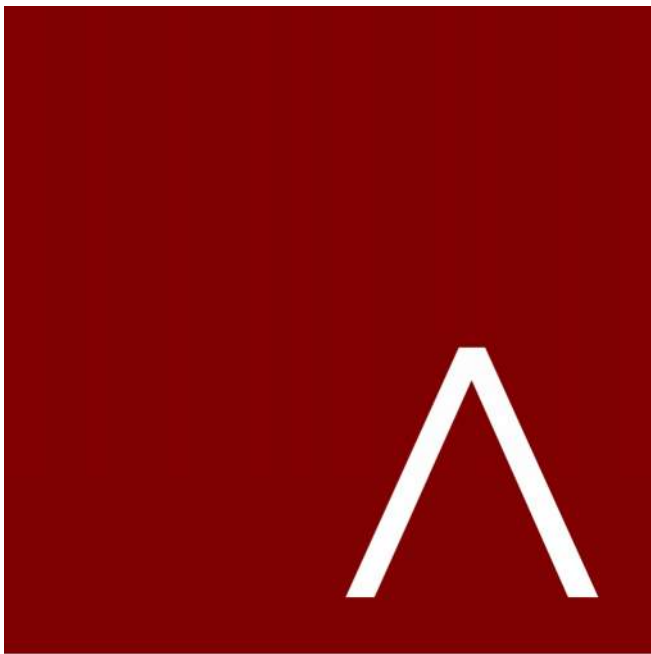


ENLARGED ELEVATION:
ARCHITECTURAL SCREEN PANEL

WALL SECTION:
ARCHITECTURAL SCREEN PANEL



ENLARGED PLAN: ARCHITECTURAL
SCREEN PANEL



JLA
ARCHITECTS
MADISON : MILWAUKEE
jla-ap.com

JLA PROJECT NUMBER: W22-0201



MCKEE ROAD MIXED
USE DEVELOPMENT

Common Council Presentation

PROGRESS DOCUMENTS

These documents reflect progress and intent and may be subject to change, including additional detail. These are not final construction documents and should not be used for final bidding or construction-related purposes.

DATE OF ISSUANCE NOVEMBER 7, 2024

REVISION SCHEDULE		
Mark	Description	Date

SHEET TITLE

EXTERIOR MATERIALS
& BUILDING DETAILS

SHEET NUMBER

U220



JLA
ARCHITECTS

THANK YOU

JLA-AP.COM



3570 Pioneer Road
Verona, WI 53593
PH: (608) 827-9401
FAX: (608) 827-9402
WEB: www.olsontoon.com



MCKEE ROAD MIXED
USE DEVELOPMENT

CITY OF MADISON LAND USE AND
URBAN DESIGN COMMISSION
SUBMITTAL

PROGRESS DOCUMENTS

These documents reflect progress and intent and
may be subject to change, including additional
detail. These are not final construction documents
and should not be used for final bidding or
construction-related purposes.

DATE OF ISSUANCE

10/18/2024

SHEET TITLE

LANDSCAPE PLAN

SHEET NUMBER

L100

MADER DRIVE

MAPLE GROVE DRIVE

SIDEWALK

SIDEWALK

'A2'
THREE STORY
APARTMENTS

'A1'
THREE STORY
MIXED-USE

COMMERCIAL

POOL

FENCED DOG RUN

CITY OF MADISON LANDSCAPE WORKSHEET					
Total Developed Area	SQUARE FEET	5 points per 300 sq ft			LANDSCAPE POINTS REQ.
111,071 sq ft (net) - 50,851 sq ft (building footprint)	59,723				995
CREDITS / EXISTING LANDSCAPING					
NEW / PROPOSED LANDSCAPING					
PLANT TYPE / ELEMENT	POINT VALUE	QUANTITY	POINTS ACHIEVED	QUANTITY	POINTS ACHIEVED
Overstory Deciduous (2.5" caliper)	35	0	0	19	665
Tall Evergreen Tree (5'-6')	35	0	0	0	0
Ornamental Tree (1.5" caliper)	15	0	0	14	210
Upright Evergreen Shrub (i.e. arbovitae) 3'-4' tall	15	0	0	51	510
Shrub, deciduous (#3 gal. cont)	4	0	0	95	285
Shrub, evergreen (#3 gal. cont)	4	0	0	8	32
Ornamental Grasses/Perennials (#1 gal. cont)	2	0	0	337	674
Ornamental/Decorative Fencing or Wall (4pts / 10Lr)	4	0	0	0	0
Existing Significant Specimen Tree (2.5" dbh)	14	0	0	0	0
Landscape Furniture for public seating and/or transit connections (5pts. per seat)	5	0	0	0	0
					2376

PLANT LIST

KEY	SCIENTIFIC NAME	QTY	SIZE	ROOT	STEM
DECIDUOUS TREES					
AF	Acer x freemanii 'Armstrong'	5	2.5"	B&B	
GB	Ginkgo biloba 'Princeton Sentry'	4	2"	B&B	
GD	Gymnocladus dioica 'Espresso-JFS'	1	2"	B&B	
GS	Gleditsia inaequalis var. inermis 'Skyline'	2	2"	B&B	
GT	Gleditsia inaequalis 'Drawes' PP21,699	2	2"	B&B	
PA	Platanus x auriculata 'Morton Circle'	2	2.5"	B&B	
QW	Quercus x warei 'Long'	3	2.5"	B&B	
ORNAMENTAL TREES					
CC	Cercis canadensis	3	6"	B&B	CLUMP
MR	Malus 'Jewelcole'	4	2"	B&B	
SR	Syringa reticulata 'Ivory Silk'	7	2"	B&B	TF
UPRIGHT EVERGREEN SHRUBS					
JC	Juniperus chinensis 'Mountbatten'	4	6"	B&B	
JS	Juniperus x 'J.N. Select Blue'	18	6"	B&B	
JT	Juniperus virginiana 'Taylor'	7	6"	B&B	
JV	Juniperus virginiana 'Cascadia'	5	6"	B&B	
TS	Thuja occidentalis 'Smaragd'	17	5"	B&B	
EVERGREEN SHRUBS					
To	Thuja occidentalis 'Limeville'	6	#5	Cont.	
Pm	Pinus mugo 'Stemound'	2	#3	Cont.	
DECIDUOUS SHRUBS					
Dk	Diervilla 'G2X885411'	9	#3	Cont.	
lv	llex virginica 'Spartan'	18	#3	Cont.	
Ha	Hydrangea arborescens 'Abelwe'	7	#3	Cont.	
Hp	Hydrangea paniculata 'Jane'	9	#3	Cont.	
Hq	Hydrangea paniculata 'Bulk'	12	#3	Cont.	
Po	Physocarpus opulifolius 'Donna May'	12	#3	Cont.	
Sb	Spiraea betulifolia 'Tor'	16	#3	Cont.	
Sd	Syringa 'SN5JBP7'	9	#3	Cont.	
Vd	Viburnum dentatum 'Christom'	3	#5	Cont.	
ORNAMENTAL GRASSES & PERENNIALS					
as	Allium 'Mikromix12'	39	#1	Cont.	
ca	Calluna vulgaris x acutiflora 'Karl Foerster'	75	#1	Cont.	
hg	Hosta 'Guacamole'	24	#1	Cont.	
hk	Hosta 'Krossa Regal'	8	#1	Cont.	
nc	Nepeta 'Cat's Pajamas'	20	#1	Cont.	
ph	Platanus virginiana 'Heavy Metal'	30	#1	Cont.	
ps	Panicum virgatum 'Shenandoah'	23	#1	Cont.	
sh	Sporobolus heterolepis	74	#1	Cont.	
rt	Rudbeckia fulgida 'Violet's Little Suzy'	44	#1	Cont.	

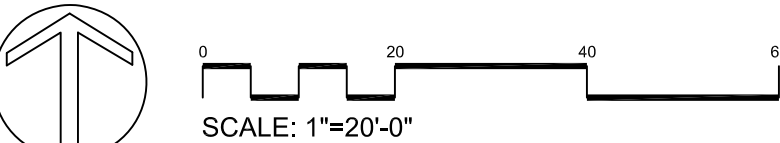
LANDSCAPE NOTES:

- Please refer to Grading & Erosion Control Plan for final contour information.
- Individual trees in lawn areas to receive wood mulch rings

1.5" diameter washed stone mulch spread to 3" depth, over weed barrier fabric with Dimex EdgePro polyvinyl edging or equivalent.

Brown Dyed Wood Mulch spread to 3" depth, with Dimex EdgePro polyvinyl Edging or equivalent.

Premium grass seed with straw mat erosion blanket.



STREET TREE NOTE:

Existing street trees shall be protected. Contractor shall install tree protection fencing in the area between the curb and sidewalk and extend it at least 5 feet from both sides of the tree along the length of the terrace. No excavation is permitted within 5 feet of the outside edge of a tree trunk. If excavation within 5 feet of any tree is necessary, contractor shall contact City Forestry at (608-266-4816) prior to excavation to assess the impact to the tree and root system. Tree pruning shall be coordinated with City Forestry prior to the start of construction. Tree protection specifications can be found in section 107.13 of City of Madison Standard Specifications for Public Works Construction.

<http://www.cityofmadison.com/business/pw/documents/StdSpecs/2013/Part1.pdf>.

Any tree removals that are required for construction after the development plan is approved will require at least a 72 hour wait period before a tree removal permit can be issued by Forestry, to notify the Alder of the change in the tree plan.

At least one week prior to street tree planting, Contractor shall contact City Forestry (608-266-4816) to schedule inspection and approval of nursery tree stock and review planting specifications with the landscaper.



CITY OF MADISON LANDSCAPE WORKSHEET					
Total Developed Area	SQUARE FEET	5 points per 300 sq ft			LANDSCAPE POINTS REQ.
111,071 sf (lot) - 50,551 sf (building footprint)	59,723				995
			CREDITS / EXISTING LANDSCAPING		NEW / PROPOSED LANDSCAPING
PLANT TYPE / ELEMENT	POINT VALUE	QUANTITY	POINTS ACHIEVED	QUANTITY	POINTS ACHIEVED
Overstory Deciduous (2.5" caliper)	35		0	19	665
Tall Evergreen Tree (5'-6')	35		0	0	0
Ornamental Tree (1.5" caliper)	10		0	14	210
Upright Evergreen Shrub (i.e. arborvitae) 3'-4' tall	10		0	56	560
Shrub, deciduous (#3 gal. cont)	4		0	91	372
Shrub, evergreen (#3 gal. cont)	4		0	8	23
Ornamental Grasses/Perennials (#1 gal. cont)	2		0	345	690
Ornamental/Decorative Fencing or Wall (4pts / 10LF)	4		0	0	0
Existing Significant Specimen Tree (2.5" dbh)	14		0	0	0
Landscape Furniture for public seating and/or transit connections (5pts. per seat)	5		0	0	0
			0		2430

TOTAL POINTS ACHIEVED 2430

PLANT LIST

KEY	SCIENTIFIC NAME	COMMON NAME	QTY	SIZE	ROOT	STEM
DECIDUOUS TREES						
AF	<i>Acer x freemanii</i> 'Armstrong'	Armstrong Maple	5	2.5"	B&B	
GB	<i>Ginkgo biloba</i> 'Princeton Sentry'	Princeton Sentry Ginkgo	4	2"	B&B	
GD	<i>Gymnocladus dioica</i> 'Espresso-JFS'	Espresso Kentucky Coffeetree	1	2"	B&B	
GS	<i>Gleditsia triacanthos</i> var. <i>inermis</i> 'Skyline'	Skyline Honeylocust	2	2"	B&B	
GT	<i>Gleditsia triacanthos</i> 'Dorsey #P21 698'	Street Keeper Honeylocust	2	2"	B&B	
PA	<i>Plantanus x acerifolia</i> 'Morton Circle'	Exclamation! London Planetree	2	2.5"	B&B	
QW	<i>Quercus x warei</i> 'Long'	Regal Prince Oak	3	2.5"	B&B	

ORNAMENTAL TREES						
CC	<i>Cercis canadensis</i>	Eastern Redbud	3	6"	B&B	CLUMP
MR	<i>Malus 'Jewelcole'</i>	Red Jewel Crabapple	4	2"	B&B	
SR	<i>Syringa reticulata</i> 'Vivory Silk'	Ivory Silk Japanese Tree Lilac	7	2"	B&B	TF

UPRIGHT EVERGREEN SHRUBS						
JC	<i>Juniperus chinensis</i> 'Mountainbatten'	Mountainbatten Juniper	4	6"	B&B	
JS	<i>Juniperus x 'J.N. Select Blue'</i>	Star Power Juniper	18	6"	B&B	
JT	<i>Juniperus virginiana</i> 'Taylor'	Taylor Juniper	7	6"	B&B	
JV	<i>Juniperus virginiana</i> 'Canaertii'	Canaert Juniper	5	6"	B&B	
TS	<i>Thuja occidentalis</i> 'Smaragd'	Emerald Arborvitae	22	5"	B&B	

EVERGREEN SHRUBS						
To	<i>Thuja occidentalis</i> 'Lutescent'	Lutescent Arborvitae	6	#5	Cont.	
Pm	<i>Pinus mugo</i> 'Slowmound'	Dwarf Mountain Mugo Pine	2	#3	Cont.	

DECIDUOUS SHRUBS						
Dk	<i>Diervilla 'G2X885411'</i>	Kodak Red Bush Honeysuckle	9	#3	Cont.	
Iv	<i>Ita virginica</i> 'Sprinch'	Little Henry Virginia Sweetspire	17	#3	Cont.	
Ha	<i>Hydrangea arborescens</i> 'Abetwo'	Incrediball Hydrangea	7	#3	Cont.	
Hg	<i>Hydrangea paniculata</i> 'Lance'	Little Line Hydrangea	7	#3	Cont.	
Hq	<i>Hydrangea paniculata</i> 'Bulk'	Quick Fire Hydrangea	12	#3	Cont.	
Po	<i>Physocarpus opulifolius</i> 'Dorona May'	Little Devil Ninebark	10	#3	Cont.	
Sb	<i>Spiraea betulifolia</i> 'Tor'	Tor Birchleaf Spiraea	16	#3	Cont.	
Sd	<i>Syringa 'SINSBJP7'</i>	Bloomerang Dark Purple Lilac	10	#3	Cont.	
Vd	<i>Viburnum dentatum</i> 'Christon'	Blue Muffin Arrowwood Viburnum	3	#5	Cont.	

ORNAMENTAL GRASSES & PERENNIALS						
as	<i>Allium 'MGsmmpkb13'</i>	Summer Peek-A-Boo Allium	39	#1	Cont.	
ca	<i>Calamagrostis x acutiflora</i> 'Karl Foerster'	Karl Foerster Feather Reed Grass	77	#1	Cont.	
hg	<i>Hosta 'Guacamole'</i>	Guacamole Hosta	24	#1	Cont.	
hk	<i>Hosta 'Krasa Regal'</i>	Krasa Regal Hosta	8	#1	Cont.	
nc	<i>Nepeta 'Carl's Pagamas'</i>	Carl's Pagamas Catmint	20	#1	Cont.	
ph	<i>Panicum virgatum</i> 'Heavy Metal'	Heavy Metal Switch Grass	30	#1	Cont.	
ps	<i>Panicum virgatum</i> 'Shenandoah'	Shenandoah Red Switch Grass	23	#1	Cont.	
sh	<i>Sporobolus heterolepis</i>	Prairie Dropseed Grass	74	#1	Cont.	
rf	<i>Rudbeckia fulgida</i> 'Vitte's Little Suzy'	Little Suzy Black Eyed Susan	50	#1	Cont.	

LANDSCAPE NOTES:

- Please refer to Grading & Erosion Control Plan for final contour information.
- Individual trees in lawn areas to receive wood mulch rings

1.5" diameter washed stone mulch spread to 3" depth, over weed barrier fabric with Dimex EdgePro polyvinyl edging or equivalent.

Brown Dyed Wood Mulch spread to 3" depth, with Dimex EdgePro polyvinyl Edging or equivalent.

Premium grass seed with straw mat erosion blanket.

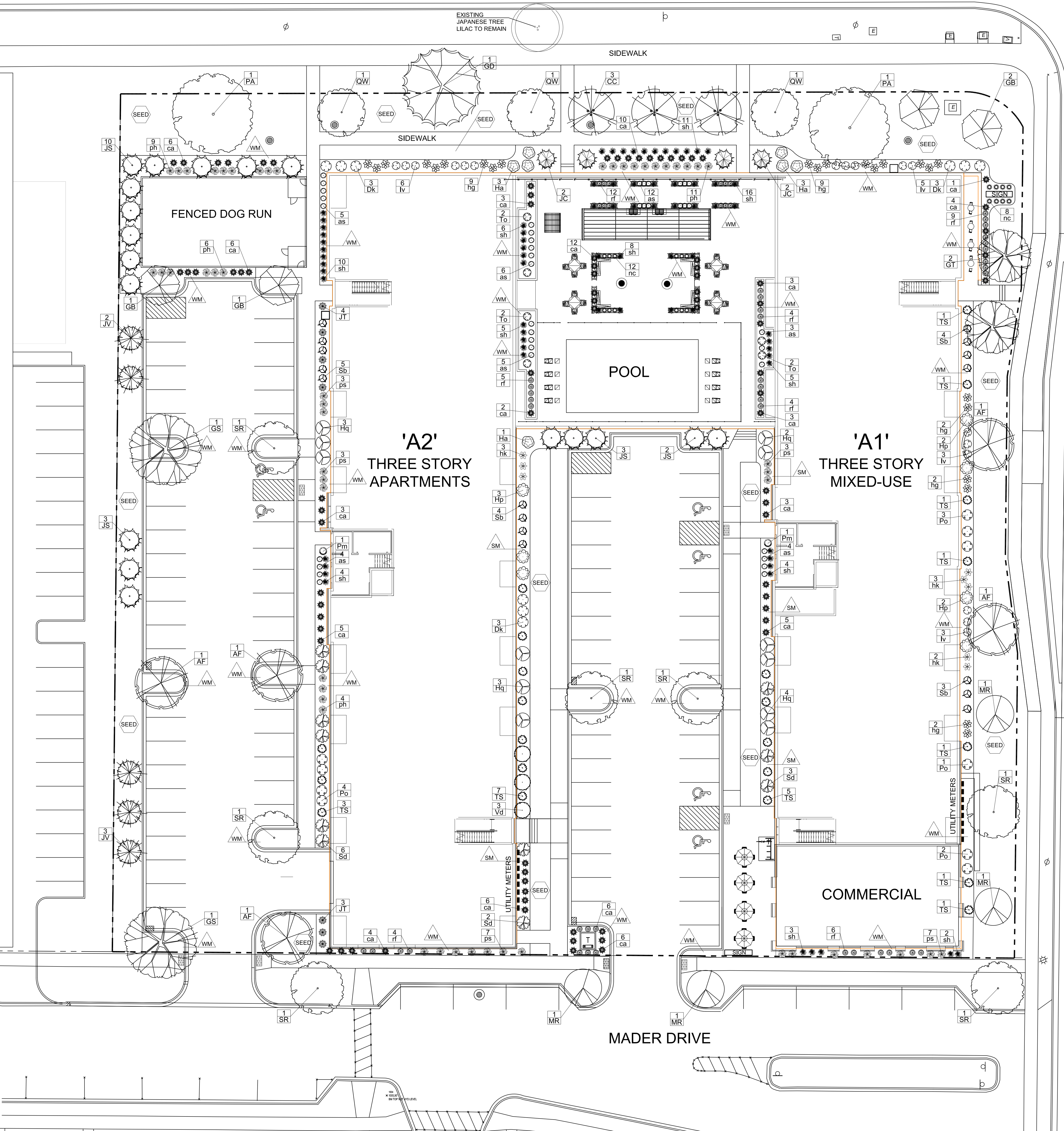
SCALE: 1/16"=1'-0"



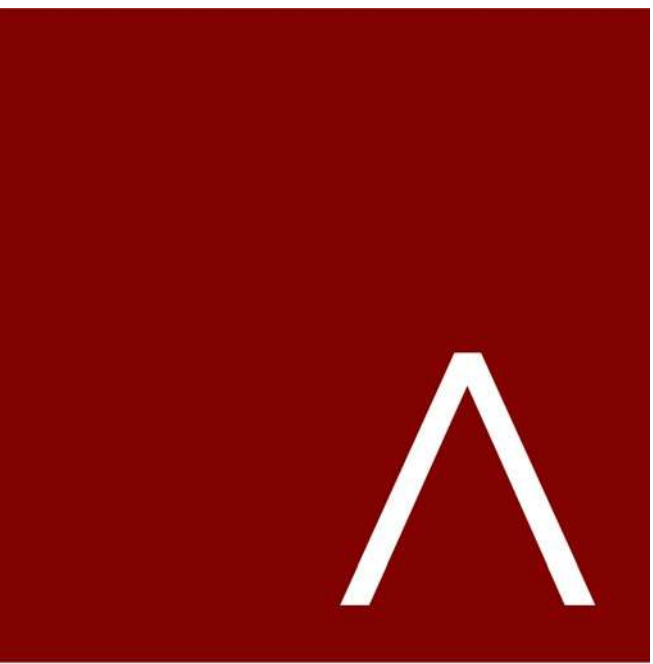
STREET TREE NOTE:

Existing street trees shall be protected. Contractor shall install tree protection fencing in the area between the curb and sidewalk and extend it at least 5 feet from both sides of the tree along the length of the terrace. No excavation is permitted within 5 feet of the outside edge of a tree trunk. If excavation within 5 feet of any tree is necessary, contractor shall contact City Forestry at (608-266-4816) prior to excavation to assess the impact to the tree and root system. Tree pruning shall be coordinated with City Forestry prior to the start of construction. Tree protection specifications can be found in section 107.13 of *City of Madison Standard Specifications for Public Works Construction* - <http://www.cityofmadison.com/business/pw/documents/StdSpecs/2013/Part1.pdf>. Any tree removals that are required for construction after the development plan is approved will require at least a 72 hour wait period before a tree removal permit can be issued by Forestry, to notify the Alder of the change in the tree plan.

At least one week prior to street tree planting, Contractor shall contact City Forestry (608-266-4816) to schedule inspection and approval of nursery tree stock and review planting specifications with the landscaper.



MAPLE GROVE DRIVE



JLA
ARCHITECTS
MADISON | MILWAUKEE | DENVER
JLA-AP.COM



JLA PROJECT NUMBER: W22-0201



MCKEE ROAD MIXED
USE DEVELOPMENT

UPDATED LANDSCAPING

PROGRESS DOCUMENTS

These documents reflect progress and intent and may be subject to change, including additional detail. These are not final construction documents and should not be used for final bidding or construction-related purposes.

DATE OF ISSUANCE NOVEMBER 8, 2024

REVISION SCHEDULE

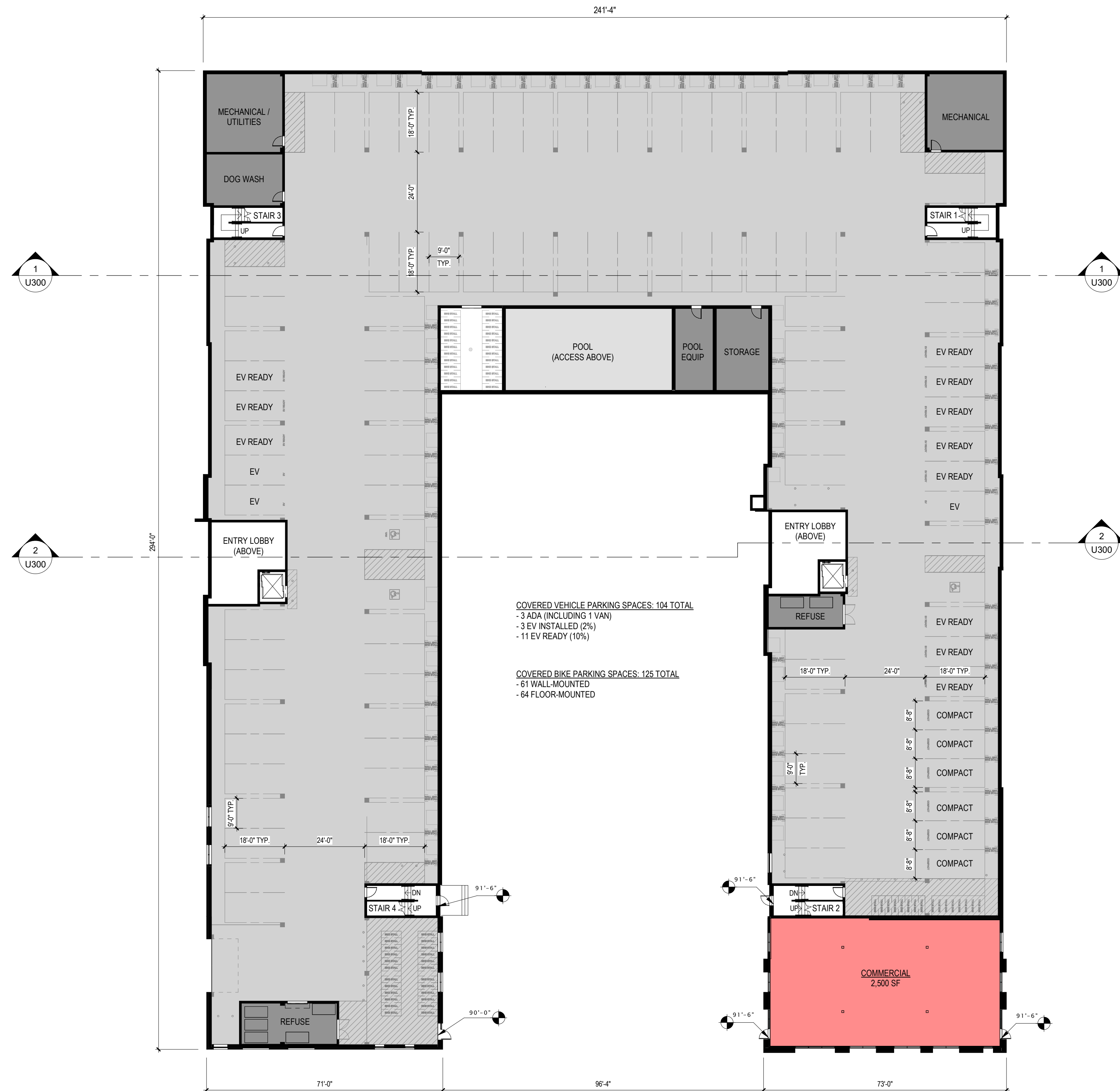
Mark	Description	Date
------	-------------	------

SHEET TITLE

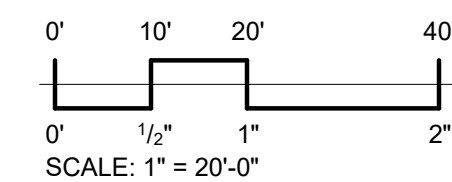
LANDSCAPE PLAN

SHEET NUMBER

L100



1 LOWER LEVEL PLAN
SCALE: 1" = 20'-0"



JLA
ARCHITECTS

MADISON : MILWAUKEE
jla-ap.com

JLA PROJECT NUMBER: W22-0201



MCKEE ROAD MIXED USE DEVELOPMENT

CITY OF MADISON LAND USE AND
URBAN DESIGN COMMISSION
SUBMITTAL

PROGRESS DOCUMENTS

These documents reflect progress and intent and may be subject to change, including additional detail. These are not final construction documents and should not be used for final bidding or construction-related purposes.

DATE OF ISSUANCE: OCTOBER 18, 2024

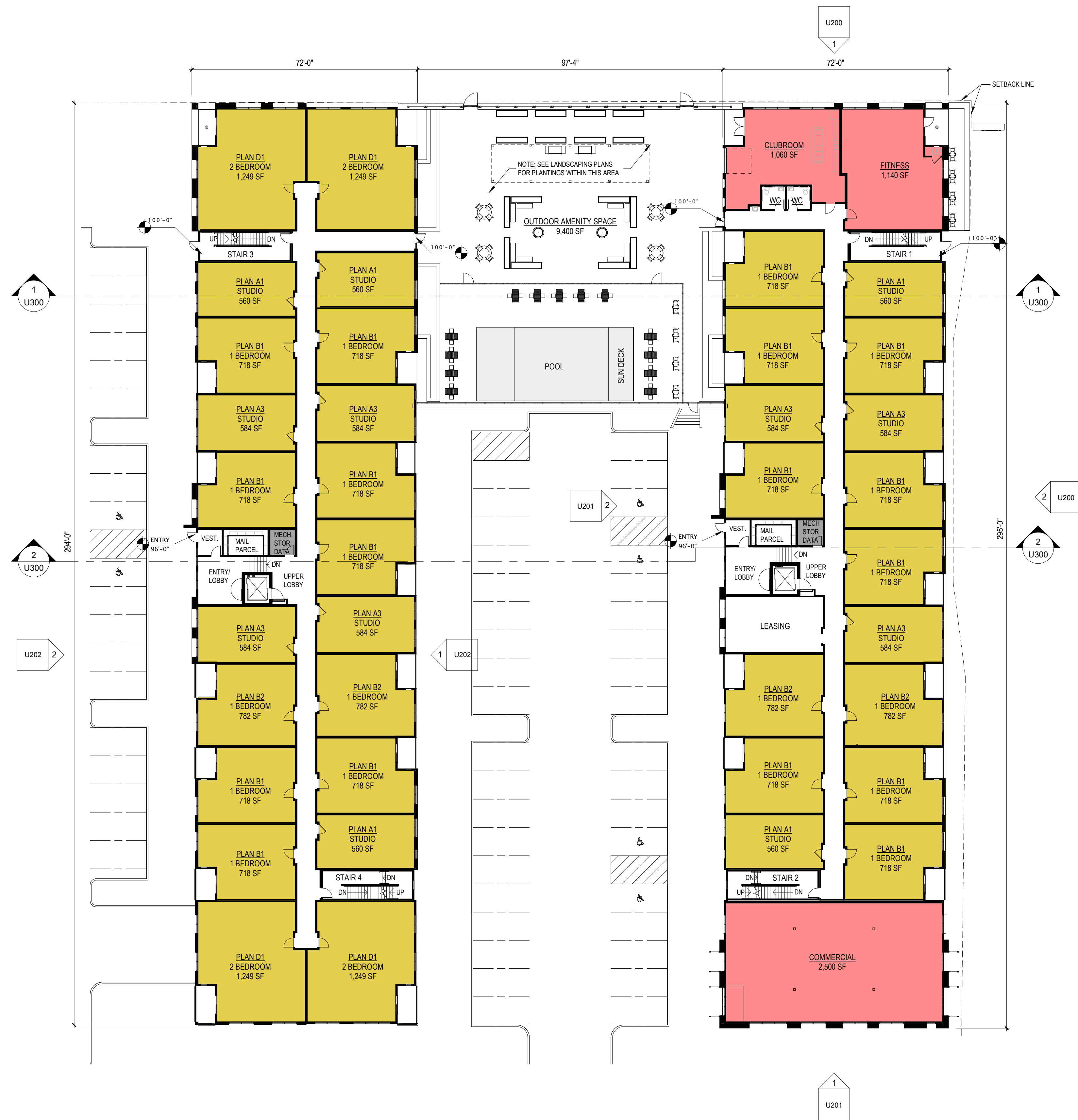
REVISION SCHEDULE		
Mark	Description	Date

SHEET TITLE

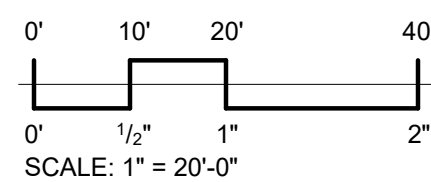
LOWER LEVEL PLAN

SHEET NUMBER

U100



1 FIRST FLOOR PLAN
SCALE: 1" = 20'-0"



JLA
ARCHITECTS

MADISON : MILWAUKEE
jla-ap.com

JLA PROJECT NUMBER: W22-0201



MCKEE ROAD MIXED USE DEVELOPMENT

CITY OF MADISON LAND USE AND
URBAN DESIGN COMMISSION
SUBMITTAL

PROGRESS DOCUMENTS

These documents reflect progress and intent and may be subject to change, including additional detail. These are not final construction documents and should not be used for final bidding or construction-related purposes.

DATE OF ISSUANCE OCTOBER 18, 2024

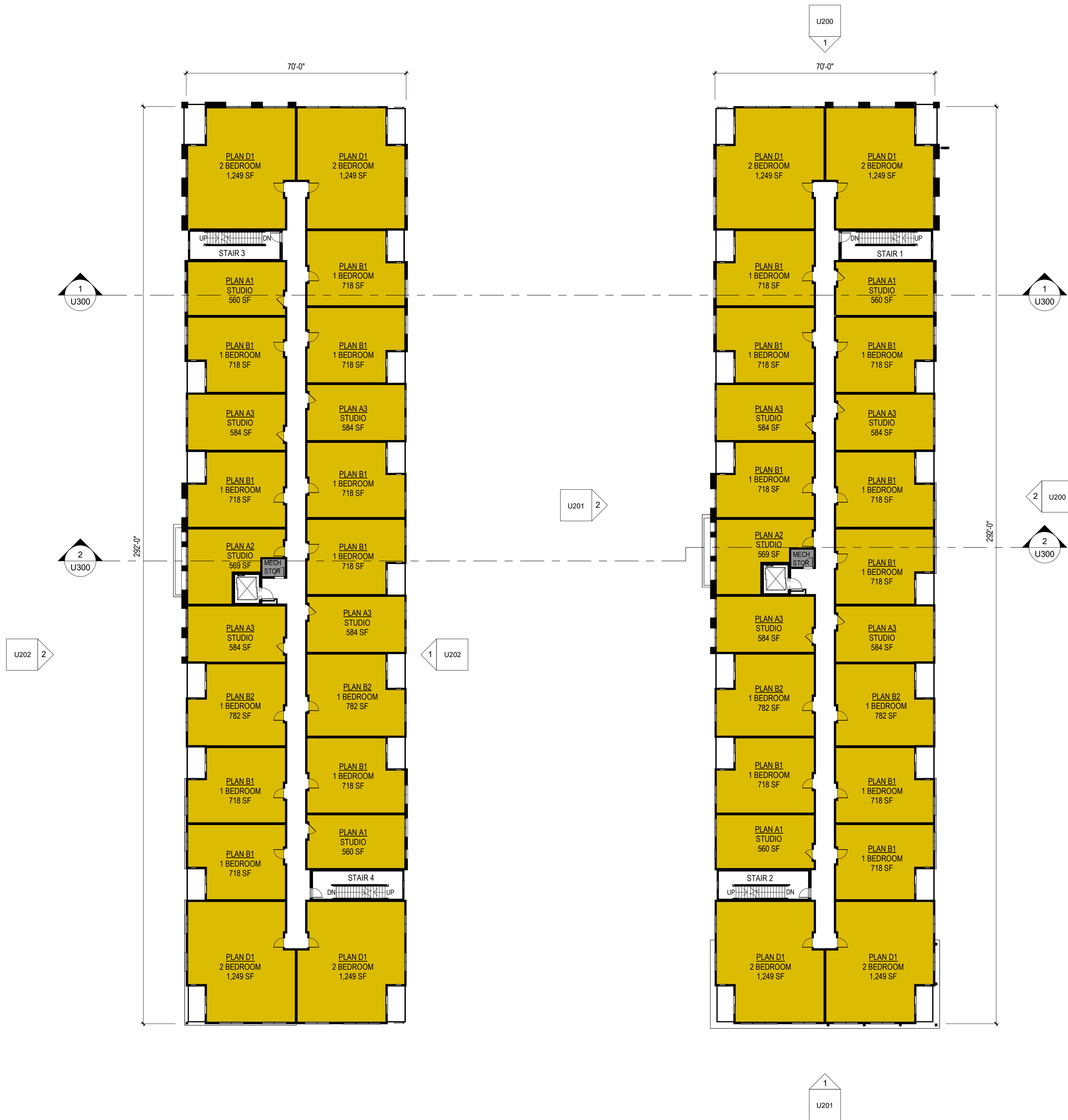
REVISION SCHEDULE		
Mark	Description	Date

SHEET TITLE

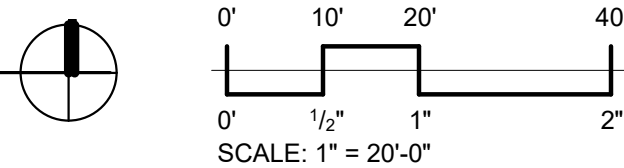
FIRST FLOOR PLAN

SHEET NUMBER

U101



1 SECOND FLOOR PLAN (THIRD FLOOR PLAN SIM.)
SCALE: 1" = 20'-0"



JLA
ARCHITECTS

MADISON : MILWAUKEE
jla-ap.com

JLA PROJECT NUMBER: W22-0201



**MCKEE ROAD MIXED
USE DEVELOPMENT**

CITY OF MADISON LAND USE AND
URBAN DESIGN COMMISSION
SUBMITTAL

PROGRESS DOCUMENTS

These documents reflect progress and intent and may be subject to change, including additional detail. These are not final construction documents and should not be used for final bidding or construction-related purposes.

DATE OF ISSUANCE OCTOBER 18, 2024

REVISION SCHEDULE		
Mark	Description	Date

SHEET TITLE

TYPICAL FLOOR PLAN

SHEET NUMBER

U102



JLA PROJECT NUMBER: W22-0201



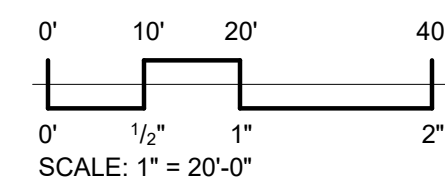
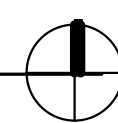
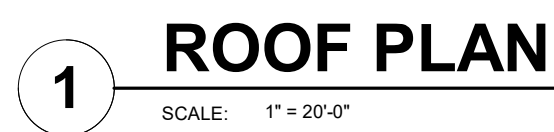
CITY OF MADISON LAND USE AND
URBAN DESIGN COMMISSION
SUBMITTAL

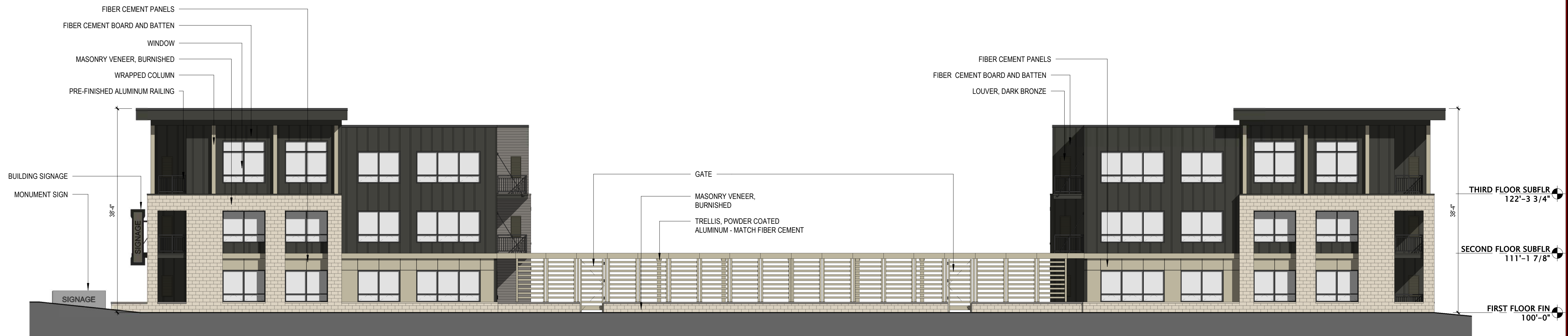
These documents reflect progress and intent and may be subject to change, including additional detail. These are not final construction documents and should not be used for final bidding or construction-related purposes.

REVISION SCHEDULE		
Mark	Description	Date

ROOF PLAN

U103





1 NORTH ELEVATION

SCALE: 3/32" = 1'-0"



2 EAST ELEVATION - A1 BLDG

SCALE: 3/32" = 1'-0"



JLA
ARCHITECTS

MADISON : MILWAUKEE
jla-ap.com

JLA PROJECT NUMBER: W22-0201



MCKEE ROAD MIXED
USE DEVELOPMENT

CITY OF MADISON LAND USE AND
URBAN DESIGN COMMISSION
SUBMITTAL

PROGRESS DOCUMENTS

These documents reflect progress and intent and may be subject to change, including additional detail. These are not final construction documents and should not be used for final bidding or construction-related purposes.

DATE OF ISSUANCE OCTOBER 18, 2024

REVISION SCHEDULE

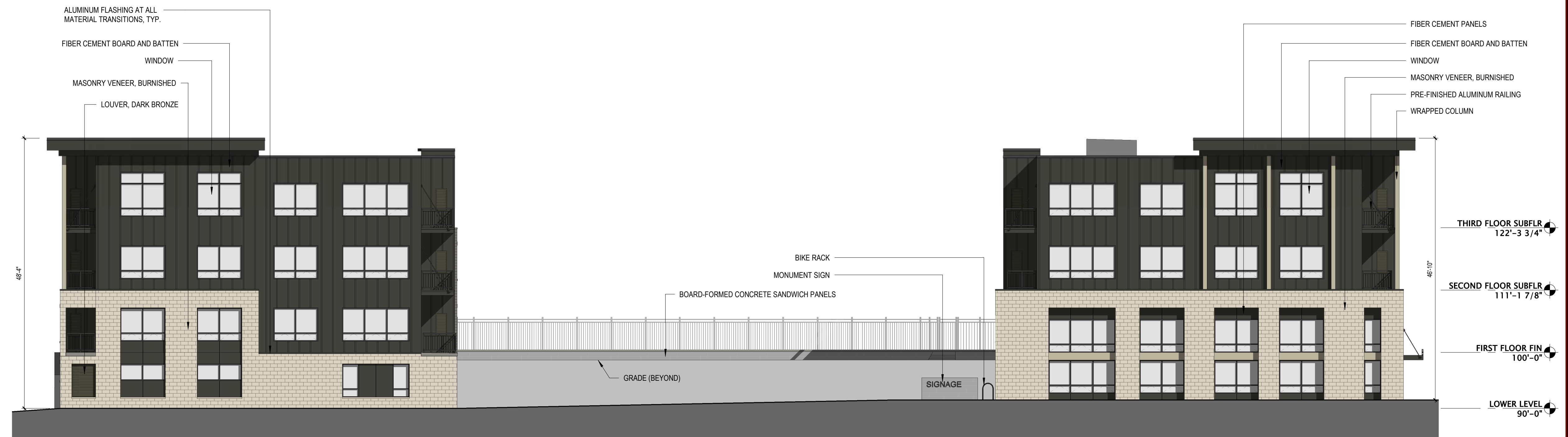
Mark	Description	Date
------	-------------	------

SHEET TITLE

EXTERIOR ELEVATIONS

SHEET NUMBER

U200



1 SOUTH ELEVATION

SCALE: 3/32" = 1'-0"



2 WEST ELEVATION - A1 BLDG

SCALE: 3/32" = 1'-0"



JLA
ARCHITECTS

MADISON : MILWAUKEE
jla-ap.com

JLA PROJECT NUMBER: W22-0201



MCKEE ROAD MIXED
USE DEVELOPMENT

CITY OF MADISON LAND USE AND
URBAN DESIGN COMMISSION
SUBMITTAL

PROGRESS DOCUMENTS

These documents reflect progress and intent and may be subject to change, including additional detail. These are not final construction documents and should not be used for final bidding or construction-related purposes.

DATE OF ISSUANCE OCTOBER 18, 2024

REVISION SCHEDULE		
Mark	Description	Date

SHEET TITLE

EXTERIOR ELEVATIONS

SHEET NUMBER

U201



1 EAST ELEVATION - A2 BLDG

SCALE: 3/32" = 1'-0"



2 WEST ELEVATION - A2 BLDG

SCALE: 3/32" = 1'-0"



JLA
ARCHITECTS

MADISON : MILWAUKEE
jla-ap.com

JLA PROJECT NUMBER: W22-0201



MCKEE ROAD MIXED USE DEVELOPMENT

CITY OF MADISON LAND USE AND
URBAN DESIGN COMMISSION
SUBMITTAL

PROGRESS DOCUMENTS

These documents reflect progress and intent and may be subject to change, including additional detail. These are not final construction documents and should not be used for final bidding or construction-related purposes.

DATE OF ISSUANCE OCTOBER 18, 2024

REVISION SCHEDULE

Mark	Description	Date
------	-------------	------

SHEET TITLE

EXTERIOR ELEVATIONS

SHEET NUMBER

U202

BIRD GLASS KEYNOTES - SEE SALCULATIONS

- A

WINDOW: 3'-0"W x 6'-0"H
- B

WINDOW: 6'-0"W x 3'-0"H
- C

WINDOW: 6'-0"W x 6'-0"H
- D

WINDOW: 6'-0"W x 8'-0"H
- E

WINDOW: 8'-0"W x 3'-0"H
- F

WINDOW: 8'-0"W x 6'-0"H
- G

WINDOW: 8'-0"W x 8'-0"H
- H

WINDOW: 9'-0"W x 8'-0"H
- J

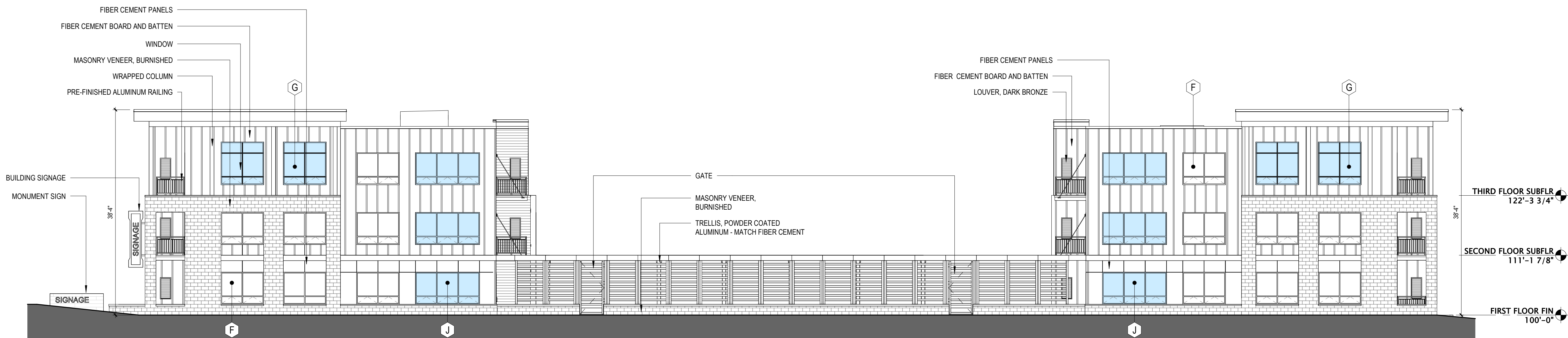
WINDOW: 12'-0"W x 6'-0"H
- K

SINGLE DOOR: 3'-0"W x 7'-0"H
- L

SINGLE DOOR w/ TRANSOM: 3'-0"W x 9'-4"H
- M

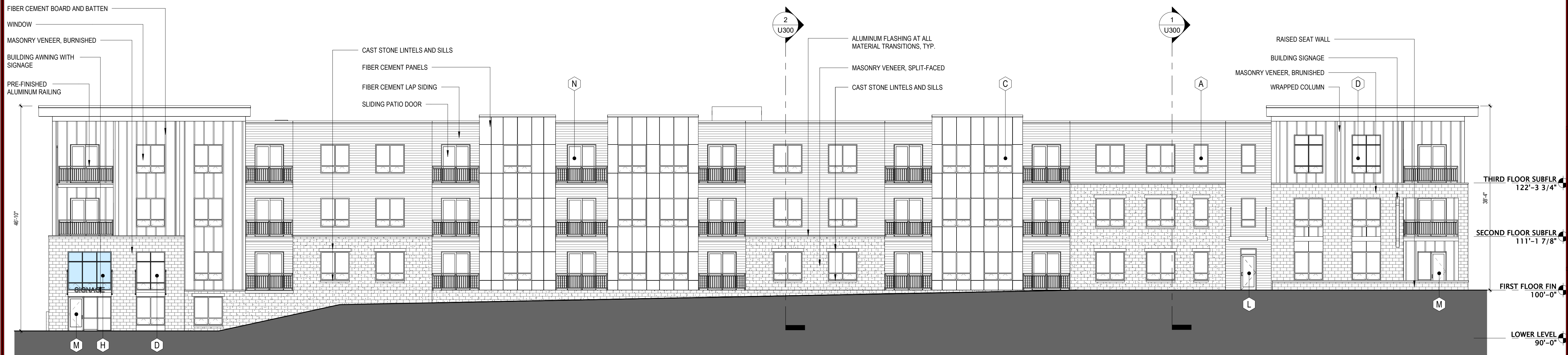
SINGLE DOOR w/ SIDELITE: 6'-0"W x 8'-0"H
- N

PATIO DOOR / DOUBLE DOOR: 6'-0"W x 8'-0"H
- BIRD GLASS LOCATIONS



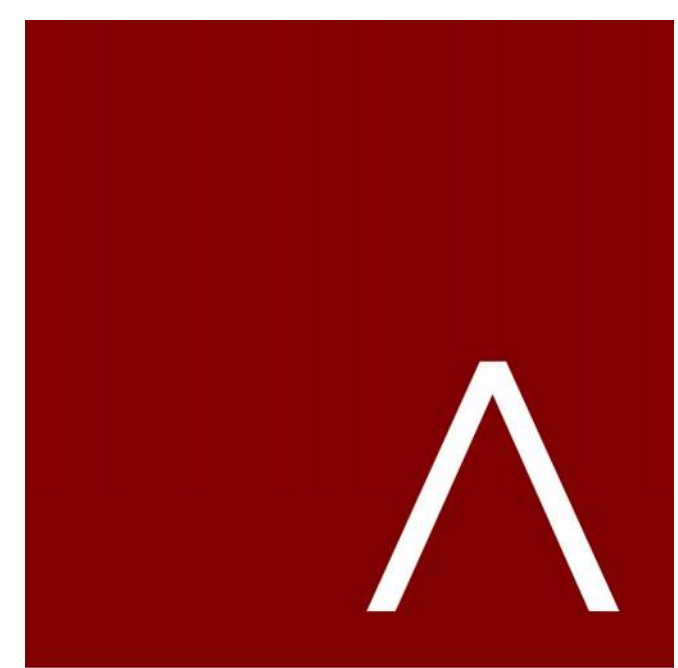
1 NORTH ELEVATION (BIRD GLASS)

SCALE: 3/32" = 1'-0"



2 EAST ELEVATION - A1 BLDG (BIRD GLASS)

SCALE: 3/32" = 1'-0"



JLA
ARCHITECTS

MADISON : MILWAUKEE
jla-ap.com

JLA PROJECT NUMBER: W22-0201



MCKEE ROAD MIXED
USE DEVELOPMENT

CITY OF MADISON LAND USE AND
URBAN DESIGN COMMISSION
SUBMITTAL

PROGRESS DOCUMENTS

These documents reflect progress and intent and may be subject to change, including additional detail. These are not final construction documents and should not be used for final bidding or construction-related purposes.

DATE OF ISSUANCE OCTOBER 18, 2024

REVISION SCHEDULE		
Mark	Description	Date

SHEET TITLE

EXTERIOR ELEVATIONS-
BIRGLASS

SHEET NUMBER

U210

BIRD GLASS KEYNOTES - SEE SALCULATIONS

- A

WINDOW: 3'-0"W x 6'-0"H
- B

WINDOW: 6'-0"W x 3'-0"H
- C

WINDOW: 6'-0"W x 6'-0"H
- D

WINDOW: 6'-0"W x 8'-0"H
- E

WINDOW: 8'-0"W x 3'-0"H
- F

WINDOW: 8'-0"W x 6'-0"H
- G

WINDOW: 8'-0"W x 8'-0"H
- H

WINDOW: 9'-0"W x 8'-0"H
- J

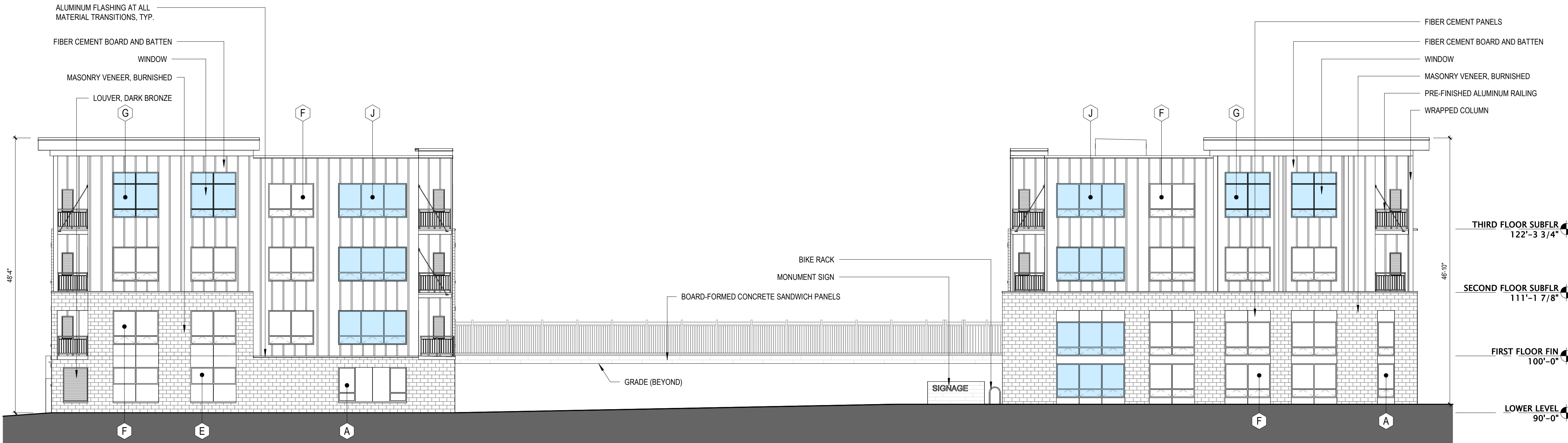
WINDOW: 12'-0"W x 6'-0"H
- K

SINGLE DOOR: 3'-0"W x 7'-0"H
- L

SINGLE DOOR w/ TRANSOM: 3'-0"W x 9'-4"H
- M

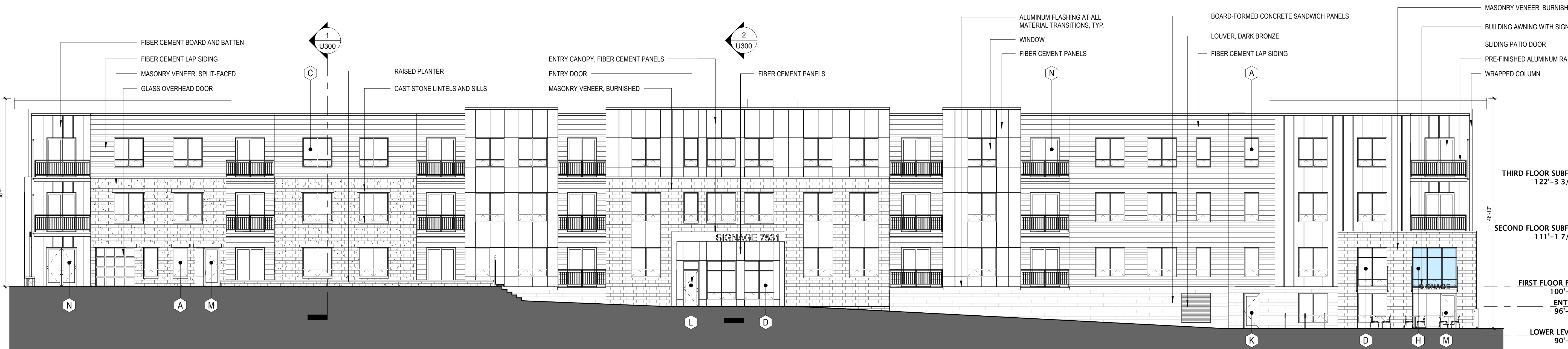
SINGLE DOOR w/ SIDELITE: 6'-0"W x 8'-0"H
- N

PATIO DOOR / DOUBLE DOOR: 6'-0"W x 8'-0"H
- BIRD GLASS LOCATIONS



1 SOUTH ELEVATION (BIRD GLASS)

SCALE: 3/32" = 1'-0"



2 WEST ELEVATION - A1 BLDG (BIRD GLASS)

SCALE: 3/32" = 1'-0"



JLA
ARCHITECTS

MADISON : MILWAUKEE
jla-ap.com

JLA PROJECT NUMBER: W22-0201



MCKEE ROAD MIXED
USE DEVELOPMENT

CITY OF MADISON LAND USE AND
URBAN DESIGN COMMISSION
SUBMITTAL

PROGRESS DOCUMENTS

These documents reflect progress and intent and may be subject to change, including additional detail. These are not final construction documents and should not be used for final bidding or construction-related purposes.

DATE OF ISSUANCE OCTOBER 18, 2024

REVISION SCHEDULE		
Mark	Description	Date

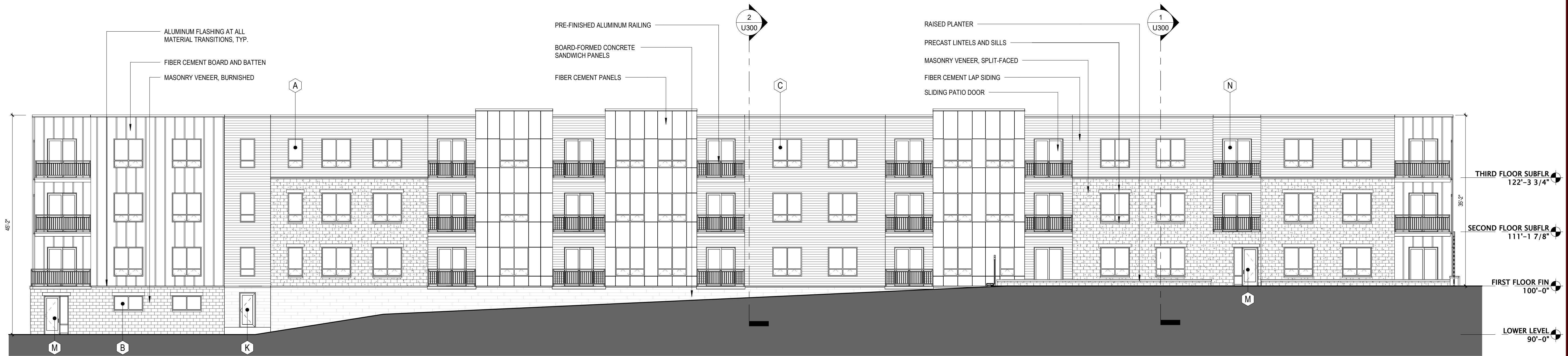
THIRD FLOOR SUBFLR	122'-3 3/4"
SECOND FLOOR SUBFLR	111'-1 7/8"
FIRST FLOOR FIN	100'-0"
ENTRY	96'-0"
LOWER LEVEL	90'-0"

SHEET TITLE

EXTERIOR ELEVATIONS-
BIRGLASS

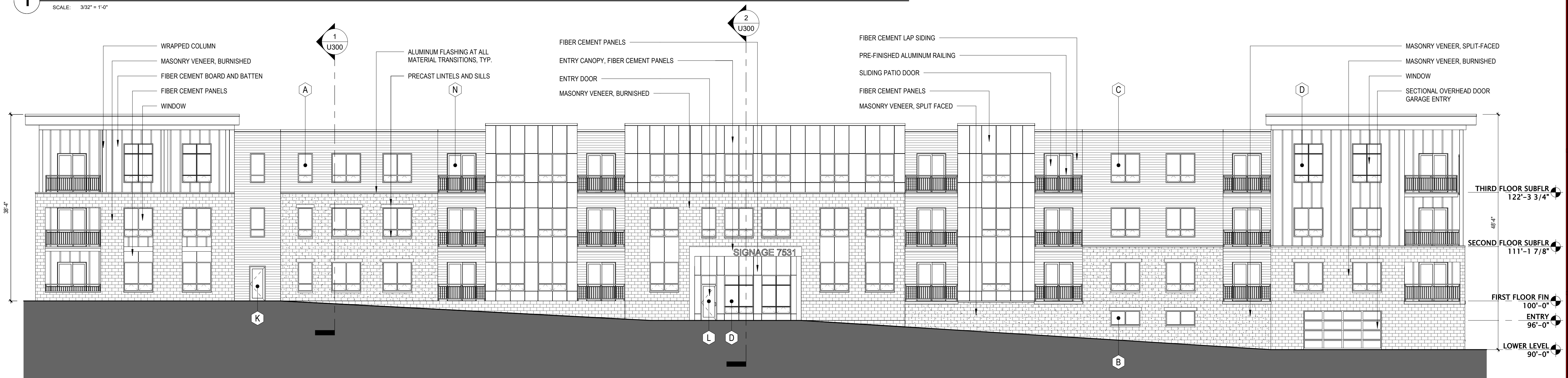
SHEET NUMBER

U211



1 EAST ELEVATION - A2 BLDG (BIRD GLASS)

SCALE: 3/32" = 1'-0"



2 WEST ELEVATION - A2 BLDG (BIRD GLASS)

SCALE: 3/32" = 1'-0"

BIRD GLASS KEYNOTES - SEE SALCULATIONS

- | | |
|----------------------------|---|
| A WINDOW: 3'-0"W x 6'-0"H | K SINGLE DOOR: 3'-0"W x 7'-0"H |
| B WINDOW: 6'-0"W x 3'-0"H | L SINGLE DOOR w/ TRANSOM: 3'-0"W x 9'-4"H |
| C WINDOW: 6'-0"W x 6'-0"H | M SINGLE DOOR w/ SIDELITE: 6'-0"W x 8'-0"H |
| D WINDOW: 6'-0"W x 8'-0"H | N PATIO DOOR / DOUBLE DOOR: 6'-0"W x 8'-0"H |
| E WINDOW: 8'-0"W x 3'-0"H | |
| F WINDOW: 8'-0"W x 6'-0"H | |
| G WINDOW: 8'-0"W x 8'-0"H | |
| H WINDOW: 9'-0"W x 8'-0"H | |
| J WINDOW: 12'-0"W x 6'-0"H | |
- BIRD GLASS LOCATIONS



JLA
ARCHITECTS

MADISON : MILWAUKEE
jla-ap.com

JLA PROJECT NUMBER: W22-0201



MCKEE ROAD MIXED
USE DEVELOPMENT

CITY OF MADISON LAND USE AND
URBAN DESIGN COMMISSION
SUBMITTAL

PROGRESS DOCUMENTS

These documents reflect progress and intent and may be subject to change, including additional detail. These are not final construction documents and should not be used for final bidding or construction-related purposes.

DATE OF ISSUANCE OCTOBER 18, 2024

REVISION SCHEDULE		
Mark	Description	Date

SHEET TITLE

EXTERIOR ELEVATIONS-
BIRGLASS

SHEET NUMBER

U212