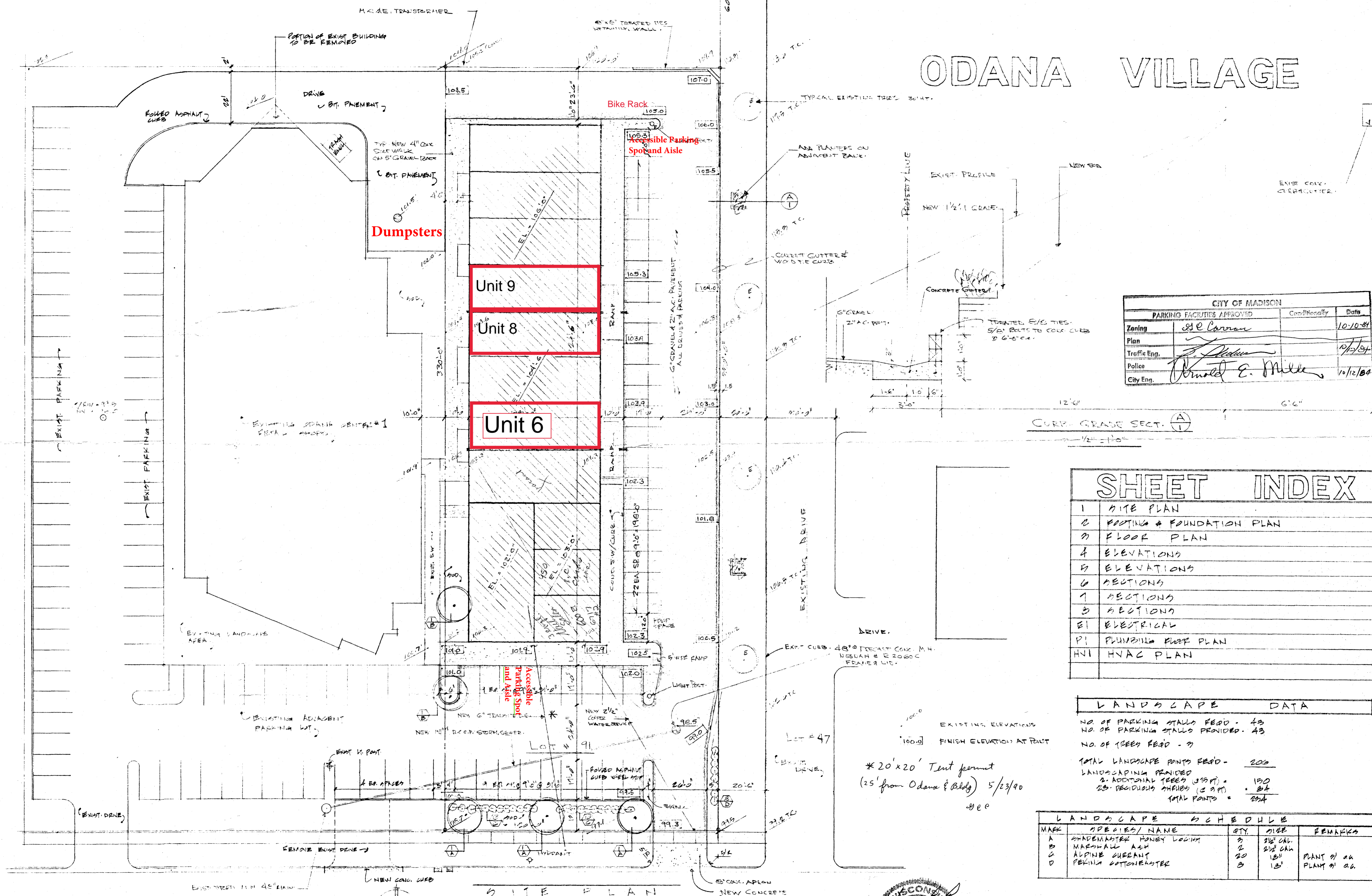


ODANA VILLAGE

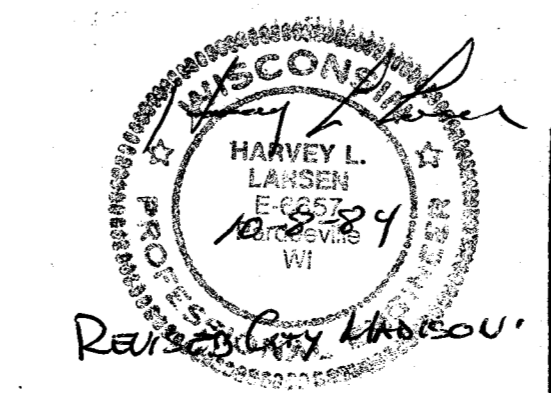


CITY OF MADISON		
PARKING FACILITIES APPROVED		
Zoning	City Officially	Date
SE-Corridor		10/10/84
Plan		10/10/84
Traffic Eng.		10/10/84
Police		10/10/84
City Eng.		10/10/84

SHEET INDEX	
1	SITE PLAN
2	FOOTING & FOUNDATION PLAN
3	FLOOR PLAN
4	ELEVATIONS
5	ELEVATIONS
6	SECTIONS
7	SECTIONS
8	SECTIONS
E1	ELECTRICAL
P1	PLUMBING RISE PLAN
HV1	HVAC PLAN

LANDSCAPE DATA	
NO. OF PARKING STALLS REQ'D	43
NO. OF PARKING STALLS PROVIDED	43
NO. OF TREES REQ'D	3
TOTAL LANDSCAPE POINTS REQ'D	200
LANDSCAPING PROVIDED	
2. ADDITIONAL TREES (315 FT.)	150
25. DECIDUOUS TREES (2 1/2 FT.)	25
TOTAL POINTS	200

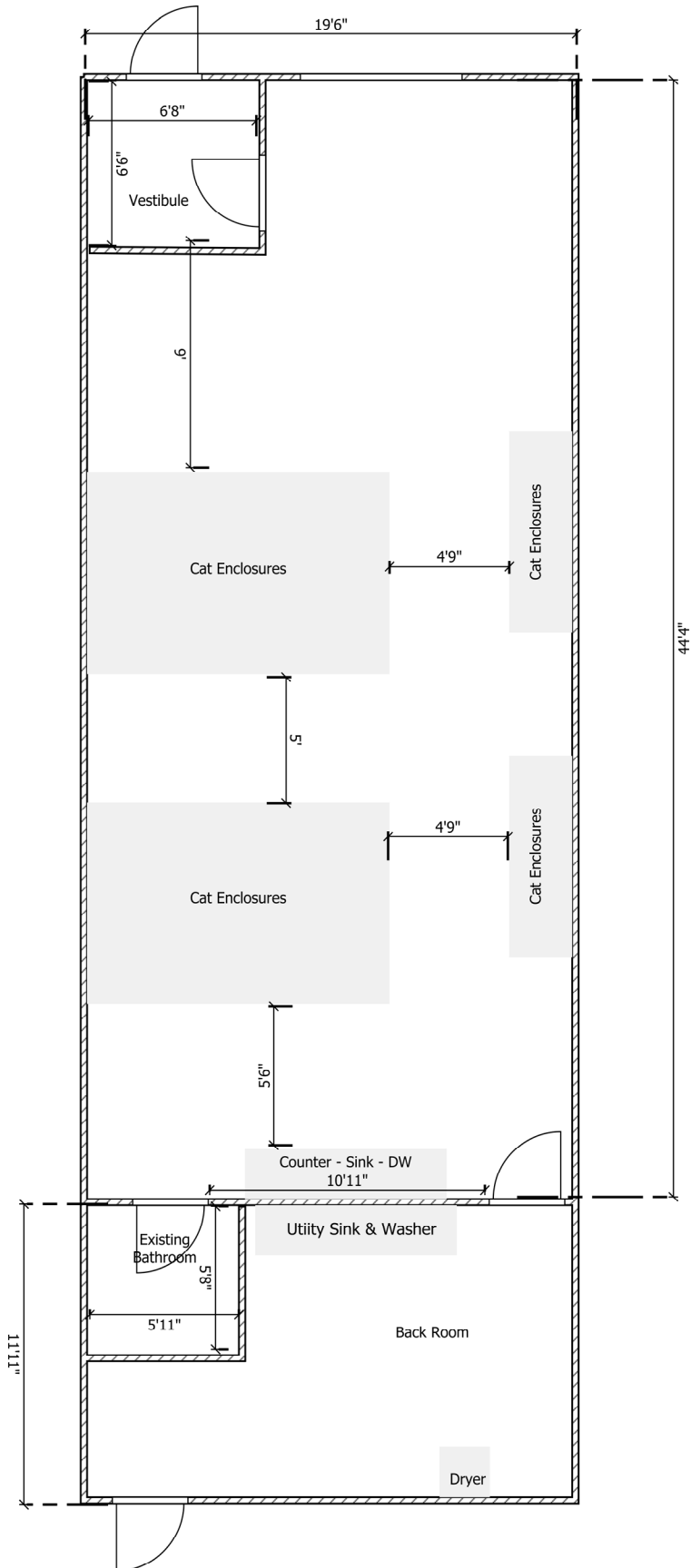
LANDSCAPE SCHEDULE				
MARK	SPECIES/ NAME	QTY.	SIZE	REMARKS
A	SHADEMASTER HONEY LOCUST	3	2 1/2" CAL.	
B	NORFOLK ISLE	2	2 1/2" CAL.	
C	ALPINE CURRANT	20	15"	PLANT @ 20
D	PERNIA COTTONEASTER	3	15"	PLANT @ 20



SHEET TITLE SITE PLAN	DATE 3.3.84	HARVEY LARSEN & ASSOCIATES 2032 PENNSYLVANIA AVE. MADISON, WIS. 53704 architects engineers	1
PROJECT ODANA VILLAGE ODANA ROAD MADISON, WIS.	REV 10.1.84		
	JOB NO		

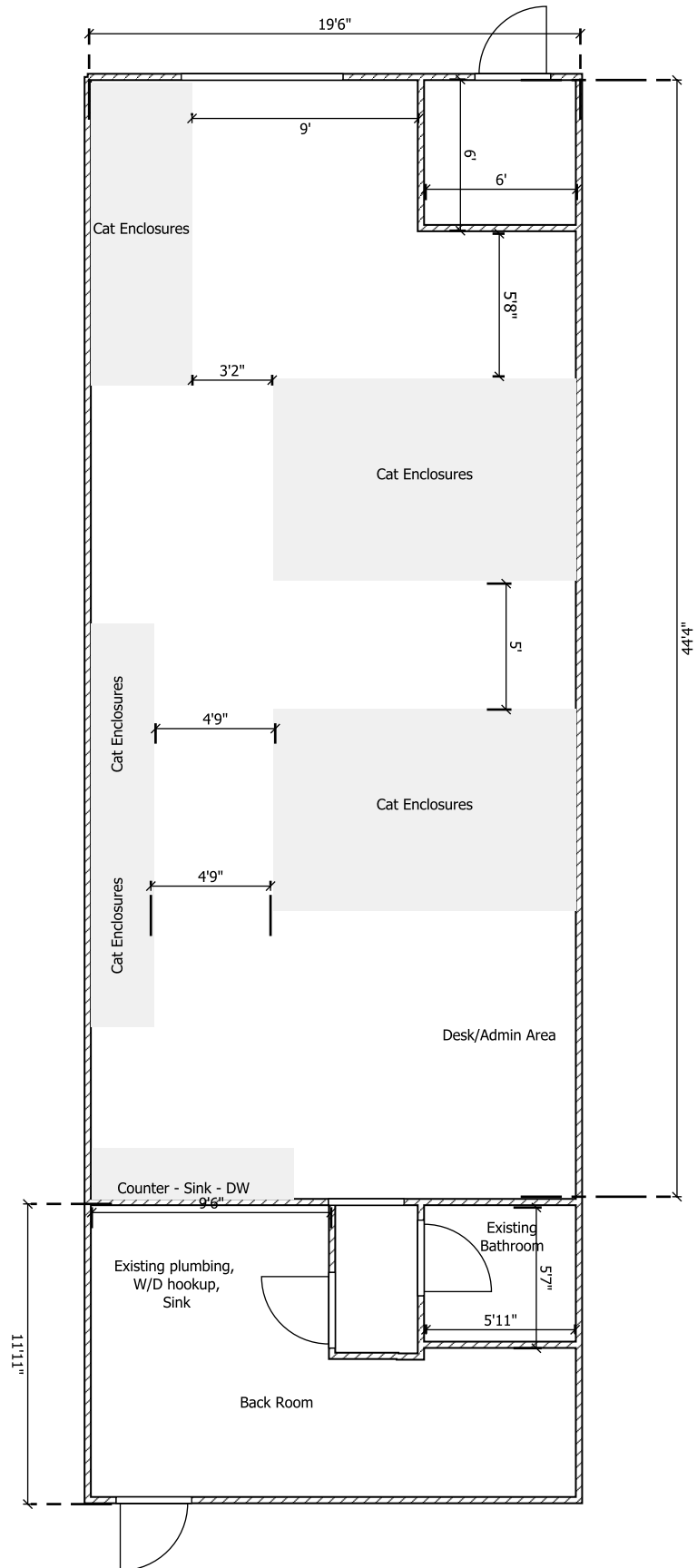
6717 Odana Rd Unit #6

Planned Floor Plan/Layout for Hotel Sisal LLC – Cat Boarding Unit 6



6717 Odana Rd Unit #8

Existing Floor Plan/Layout for Hotel Sisal LLC – Cat Boarding Unit 8



6717 Odana Rd Unit #9

Existing Floor Plan/Layout for Hotel Sisal LLC – Cat Boarding Unit 9

