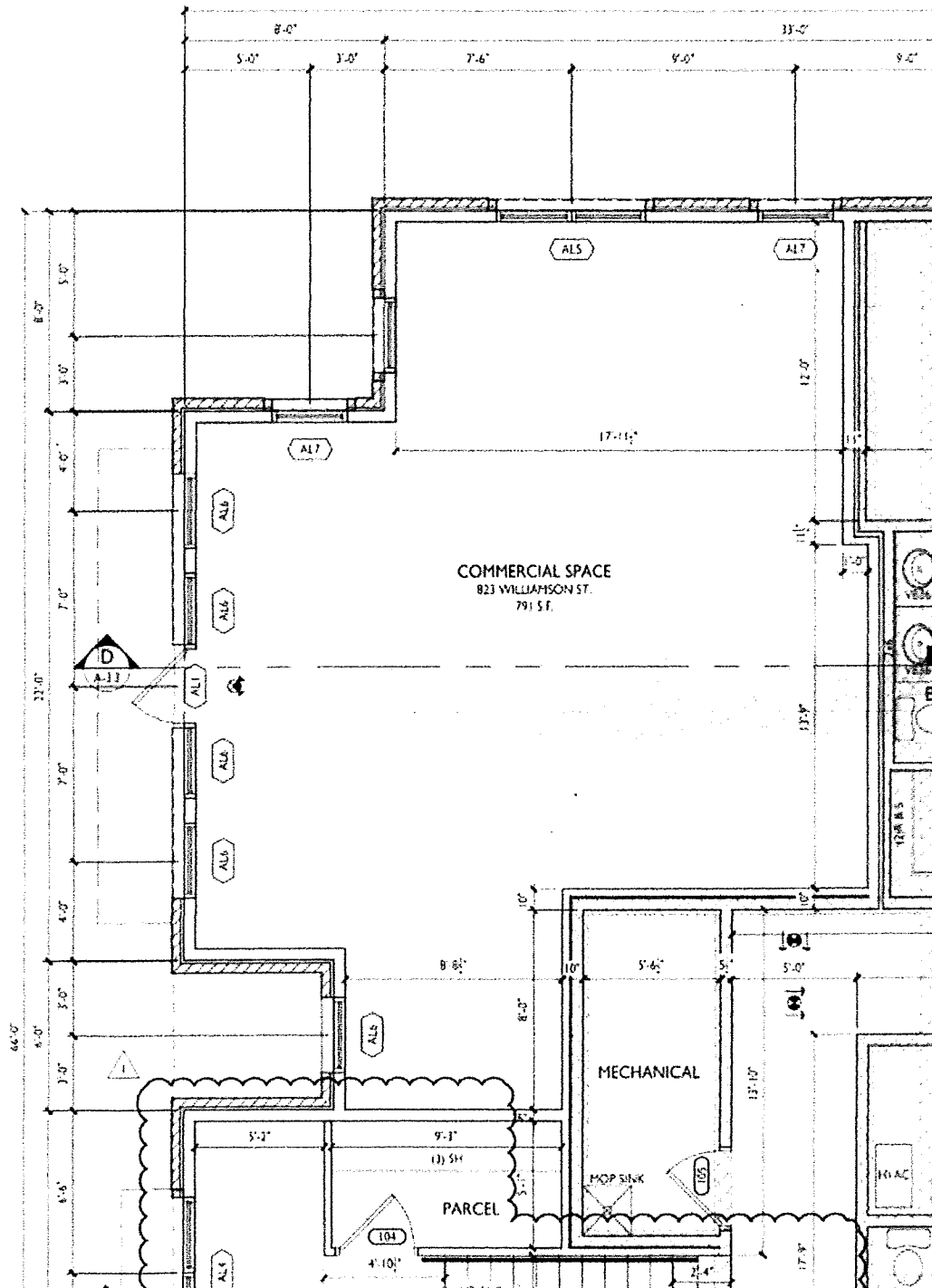


**EXHIBIT A - PREMISES**



CLASS A BEER ALCOHOL & CIDER  
LICENSE APPLICATION  
MPL CORPORATION INVESTMENT  
823 WILLIAMSON STREET MADISON WI

BUSINESS PLAN

UPON RECEIPT OF THE CLASS A BEER, LIQUOR & CIDER  
LICENSE HEREIN, WE PLAN TO OPERATE A CONVENIENCE  
STORE OFFERING A WIDE RANGE OF QUALITY  
CONSUMER PRODUCTS, INCLUDING FINE WINES &  
PREMIUM BEERS & CIDERS.