

---

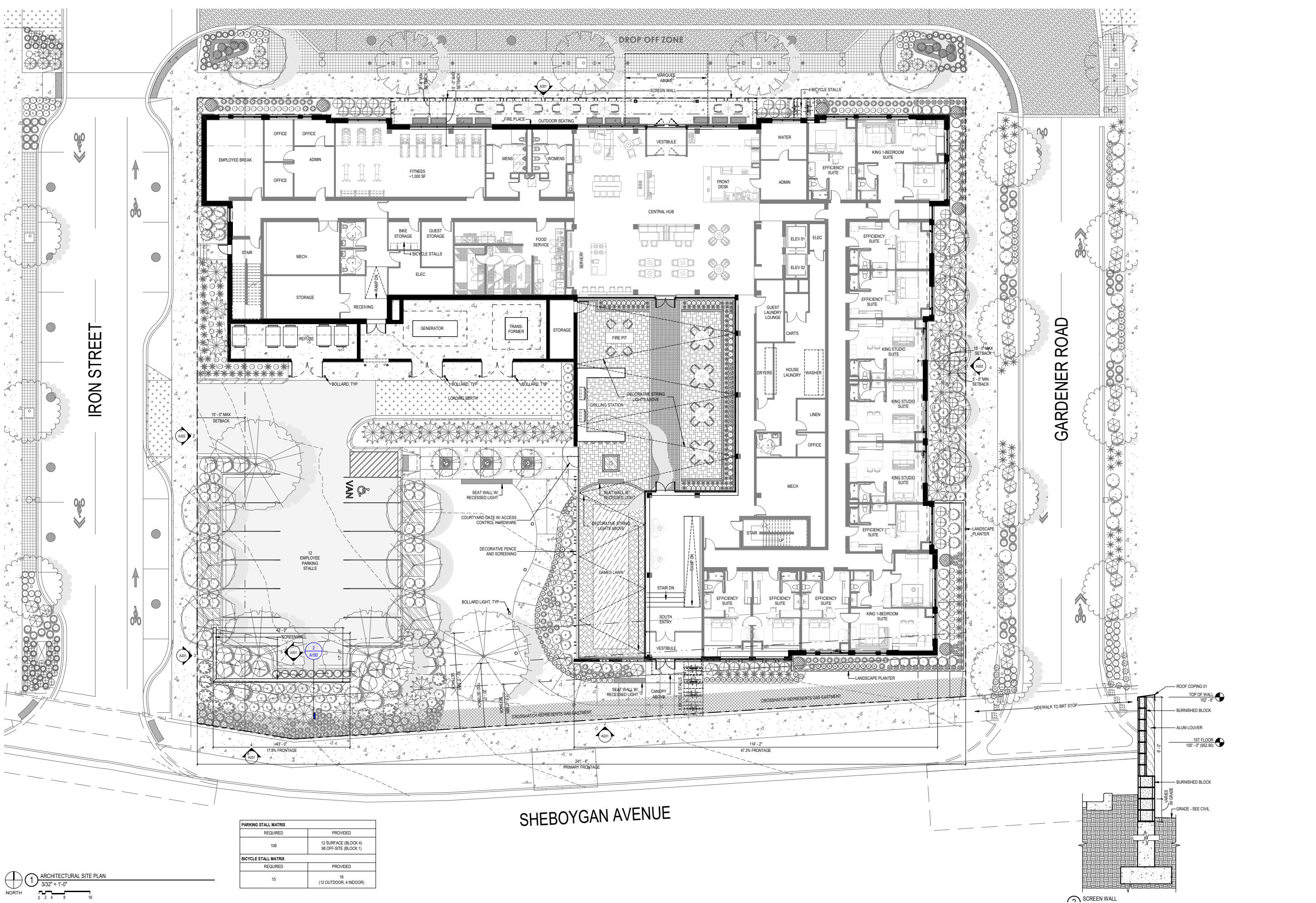
# BLOCK 4 HOTEL

MADISON . WISCONSIN

---

HOTEL DESIGN CONCEPT  
JULY 2024

**Kahler Slater**

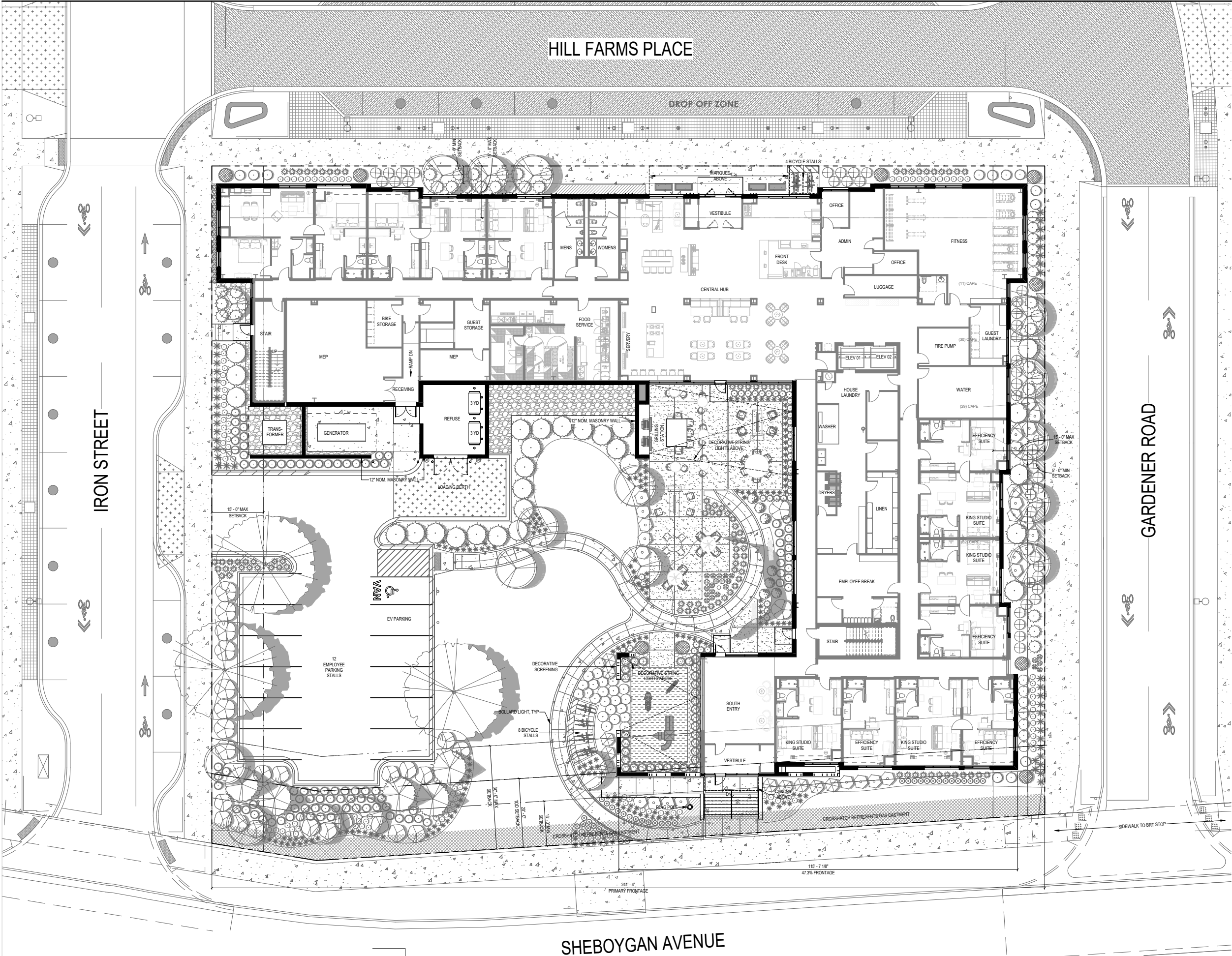


PARKING STALL MATRIX	
REQUIRED	PROVIDED
108	12 SURFACE (BLOCK 4) 96 OFF-SITE (BLOCK 1)
BICYCLE STALL MATRIX	
REQUIRED	PROVIDED
15	16 (12 OUTDOOR, 4 INDOOR)

PREVIOUS SITE PLAN



PROPOSED SITE PLAN







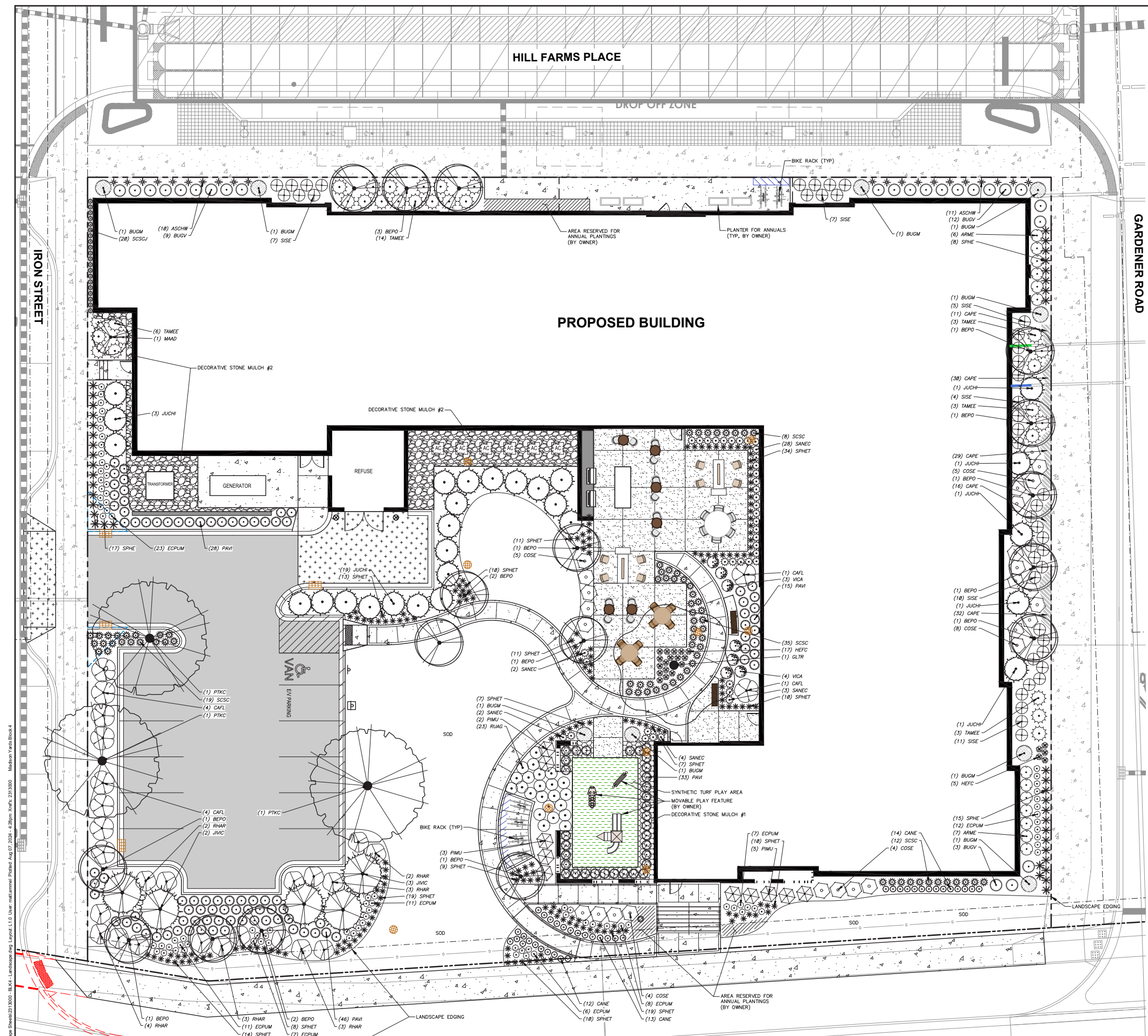
## GENERAL NOTES

1. REFER TO THE EXISTING CONDITIONS SURVEY FOR EXISTING CONDITIONS NOTES AND LEGEND.
2. ALL WORK IN THE ROW SHALL BE IN ACCORDANCE WITH THE MUNICIPAL STANDARD SPECIFICATIONS FOR PUBLIC WORKS CONSTRUCTION.
3. JSD SHALL BE HELD HARMLESS AND DOES NOT WARRANT ANY DEVIATIONS BY THE OWNER/CONTRACTOR FROM THE APPROVED CONSTRUCTION PLANS THAT MAY RESULT IN DISCIPLINARY ACTIONS BY ANY OR ALL REGULATORY AGENCIES.
4. DRAWING FOR REVIEW – NOT FOR CONSTRUCTION UNLESS OTHERWISE NOTED IN THE TITLE BLOCK.
5. THE LANDSCAPE CONTRACTOR SHALL COORDINATE ALL FINE GRADING AND TOPSOILING WITH GENERAL CONTRACTOR.
6. REFER TO "LANDSCAPE DETAILS AND NOTES" SHEET FOR ADDITIONAL DETAILS, NOTES AND SPECIFICATION INFORMATION INCLUDING MATERIALS, GUARANTEE AND ERECTION RELATED TO LANDSCAPE PLAN.
7. CONTRACTOR SHALL PLAN SITE CONDITIONS FOR UTILITY CONFLICTS, DRAINAGE ISSUES, SURFACE/UNDERGROUND AND PLANT PLACEMENT CONFLICTS PRIOR TO PLANT INSTALLATION. REPORT ANY CONDITIONS THAT MAY HAVE ADVERSE IMPACT ON PLANTING OPERATIONS TO LANDSCAPE ARCHITECT
8. DO NOT COMMENCE PLANTING OPERATIONS UNTIL ALL ADJACENT SITE IMPROVEMENTS, IRRIGATION INSTALLATION (IF APPLICABLE), AND FINISH GRADING ARE COMPLETE.

### CONTRACTOR NOTES

1. REFER TO SHEET B4-C1.0 NOTES AND LEGENDS FOR PLAN LINEWORK, HATCHING AND SYMBOL IDENTIFICATION.
2. REFER TO SHEET B4-L2.0 FOR COMPREHENSIVE PLANT SCHEDULE.
3. ALL PLANTING BEDS SHALL RECEIVE SHREDDED HARDWOOD BARK MULCH, UNLESS OTHERWISE NOTED.





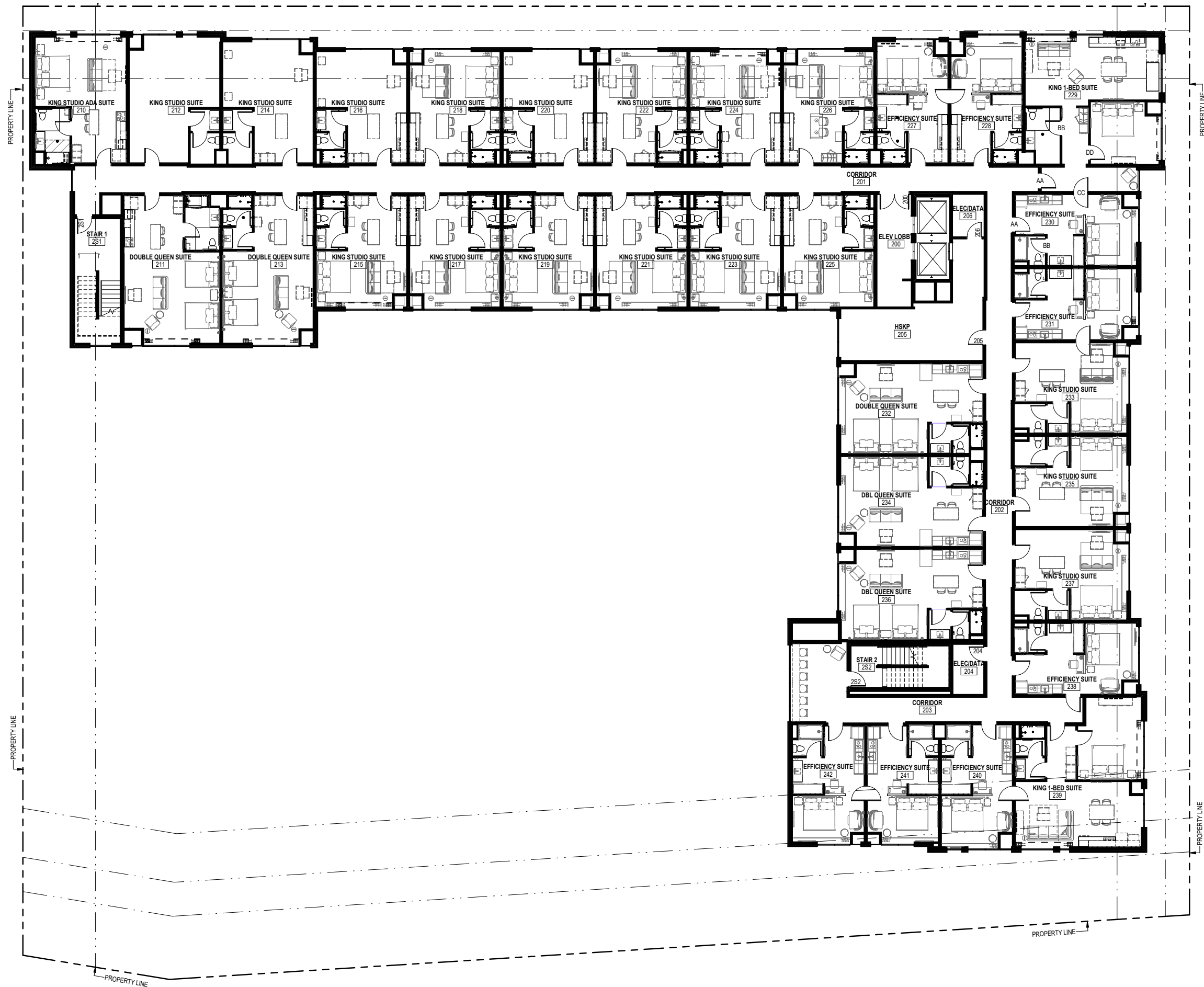
PLANT LIST		SEE SHEET 12.0 FOR A COMPREHENSIVE PLANT SCHEDULE
SYMBOL	CODE	BOTANICAL / COMMON NAME
ORNAMENTAL TREES		
	MAAD	Malus x 'Adirondack' / Adirondack Crabapple
OVERSTORY DECIDUOUS TREES		
	BEPO	Betula populifolia 'Whitespire' - Single / Whitespire Birch - Single
	GLTR	Gleditsia triacanthos 'Inermis' 'Shademaster' TM / Shademaster Locust
	PTKC	Gymnocladus dioica 'J.C. McDaniel' TM / Prairie Titan Kentucky Coffeetree
UPRIGHT EVERGREEN SHRUB		
	JUCHI	Juniperus chinensis 'Iowa' / Iowa Juniper
	JIVIC	Juniperus virginiana 'Conaerti' / Conaerti Eastern Redcedar
DECIDUOUS SHRUBS		
	ARME	Aronia melanocarpa 'Morton' TM / Iroquois Beauty Black Chokeberry
	CAFL	Calycanthus floridus 'SMNCAF' / Simply Scentational Sweetshrub
	COSE	Cornus sericea 'Farrow' / Arctic Fire® Red Twig Dogwood
	SISE	Diervilla sessilifolia 'Cool Splash' / Cool Splash False Honeysuckle
	RHAR	Rhus aromatica 'Gro-Low' / Gro-Low Fragrant Sumac *
	VICA	Viburnum carlesii 'SMVCB' TM / Spice Baby Koreanspice Viburnum
EVERGREEN SHRUBS		
	BUGV	Buxus x 'Green Velvet' / Green Velvet Boxwood
	BUGM	Buxus x 'Green Mountain' / Green Mountain Boxwood
	PIMU	Pinus mugo / Mugo Pine
	TAMEE	Taxus x media 'Everlow' / Everlow Yew
PERENNIALS & GRASSES		
	ASCHW	Aspidistra chinensis 'Vision in White' / Vision in White Chinese Aitilie
	CANE	Calamagrostis nepela 'Montrose White' / Montrose White Catmint
	ECUPM	Echinacea purpurea 'Magnus Superior' / Magnus Superior Coneflower
	HEFC	Heuchera x 'Fire Chief' / Fire Chief Coral Bells
	PAVI	Panicum virgatum 'Shenandoah' / Shenandoah Switch Grass
	RUAG	Rudbeckia x 'American Gold Rush' / American Gold Rush Coneflower
	SANEK	Salvia nemorosa 'Cardanova' / Cardanova Meadow Sage
	SCSGJ	Schizachyrium scoparium 'Jazz' / Jazz Little Bluestem
	SCSC	Schizachyrium scoparium 'Prairie Blues' / Prairie Blues Little Bluestem *
	SPHE	Sporobolus heterolepis / Prairie Droopseed
	SPHET	Sporobolus heterolepis 'Tara' / Prairie Droopseed
GROUND COVERS		
	CAPE	Carex pensylvanica / Pennsylvania Sedge

## GENERAL NOTES

1. REFER TO THE EXISTING CONDITIONS SURVEY FOR EXISTING CONDITIONS NOTES AND LEGEND.
2. ALL WORK IN THE ROW SHALL BE IN ACCORDANCE WITH THE MUNICIPAL STANDARD SPECIFICATIONS FOR PUBLIC WORKS CONSTRUCTION.
3. JSD SHALL BE HELD HARMLESS AND DOES NOT WARRANT ANY DEVIATIONS BY THE OWNER/CONTRACTOR FROM THE APPROVED CONSTRUCTION PLANS THAT MAY RESULT IN DISCIPLINARY ACTIONS BY ANY OF OUR REGULATORY AGENCIES.
4. DRAWING FOR REVIEW – NOT FOR CONSTRUCTION UNLESS OTHERWISE NOTED IN THE TITLE BLOCK.
5. THE LANDSCAPE CONTRACTOR SHALL COORDINATE ALL FINE GRADING AND TOPSOILING WITH GENERAL CONTRACTORS' PLAN.
6. REFER TO "LANDSCAPE DETAILS AND NOTES" SHEET FOR ADDITIONAL DETAILS, NOTES AND SPECIFICATION INFORMATION INCLUDING MATERIALS, GUARANTEE AND EXECUTION RELATED TO LANDSCAPE PLAN.
7. CONTRACTOR SHALL REVIEW SITE CONDITIONS FOR UTILITY CONFLICTS, DRAINAGE ISSUES, SUBSURFACE ROCK, AND PLANT PLACEMENT CONFLICTS PRIOR TO PLANT INSTALLATION. REPORT ANY CONFLICTS TO THE CITY OF SEASIDE OVERSEER OF PLANNING PRIOR TO LANDSCAPE ARCHITECT REVIEW.
8. DO NOT COMMENCE PLANTING OPERATIONS UNTIL ALL ADJACENT SITE IMPROVEMENTS, IRRIGATION INSTALLATION (IF APPLICABLE), AND FINISH GRADING ARE COMPLETE.

## CONTRACTOR NOTES

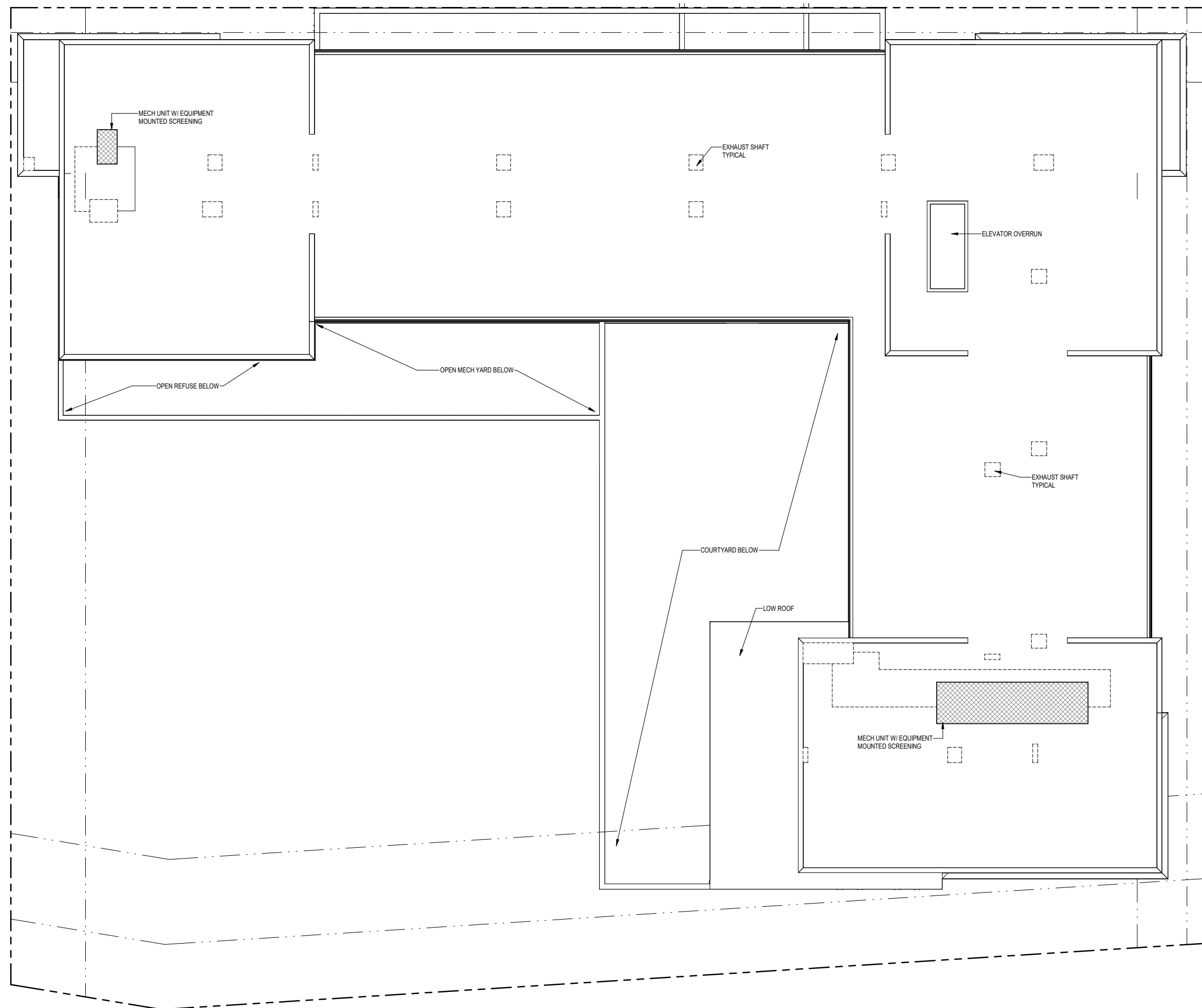
1. REFER TO SHEET B4-C1.0 NOTES AND LEGENDS FOR PLAN LINEWORK, HATCHING AND SYMBOL IDENTIFICATION
2. REFER TO SHEET B4-L2.0 FOR COMPREHENSIVE PLANT SCHEDULE.
3. ALL PLANTING BEDS SHALL RECEIVE SHREDDED HARDWOOD BARK MULCH, UNLESS OTHERWISE NOTED.



ROOM MIX BY FLOOR		
1ST FLOOR MIX		
EFFICIENCY SUITES	7	
KING STUDIO SUITES	3	
DLB QUEEN STUDIO SUITES	0	
KING 1-BEDROOM SUITES	2	
TOTAL	12	
2ND FLOOR MIX		
EFFICIENCY SUITES	8	
KING STUDIO SUITES	18	
DLB QUEEN STUDIO SUITES	5	
KING 1-BEDROOM SUITES	2	
TOTAL	33	
3RD FLOOR MIX		
EFFICIENCY SUITES	8	
KING STUDIO SUITES	18	
DLB QUEEN STUDIO SUITES	5	
KING 1-BEDROOM SUITES	2	
TOTAL	33	
4TH FLOOR MIX		
EFFICIENCY SUITES	8	
KING STUDIO SUITES	18	
DLB QUEEN STUDIO SUITES	5	
KING 1-BEDROOM SUITES	2	
TOTAL	33	
5TH FLOOR MIX		
EFFICIENCY SUITES	8	
KING STUDIO SUITES	18	
DLB QUEEN STUDIO SUITES	5	
KING 1-BEDROOM SUITES	2	
TOTAL	33	
TOTAL KEY COUNT		
EFFICIENCY SUITES	39 KEYS	27%
KING STUDIO SUITES	75 KEYS	52%
DLB QUEEN STUDIO SUITES	20 KEYS	14%
KING 1-BEDROOM SUITES	10 KEYS	7%
TOTAL	144 KEYS	100%

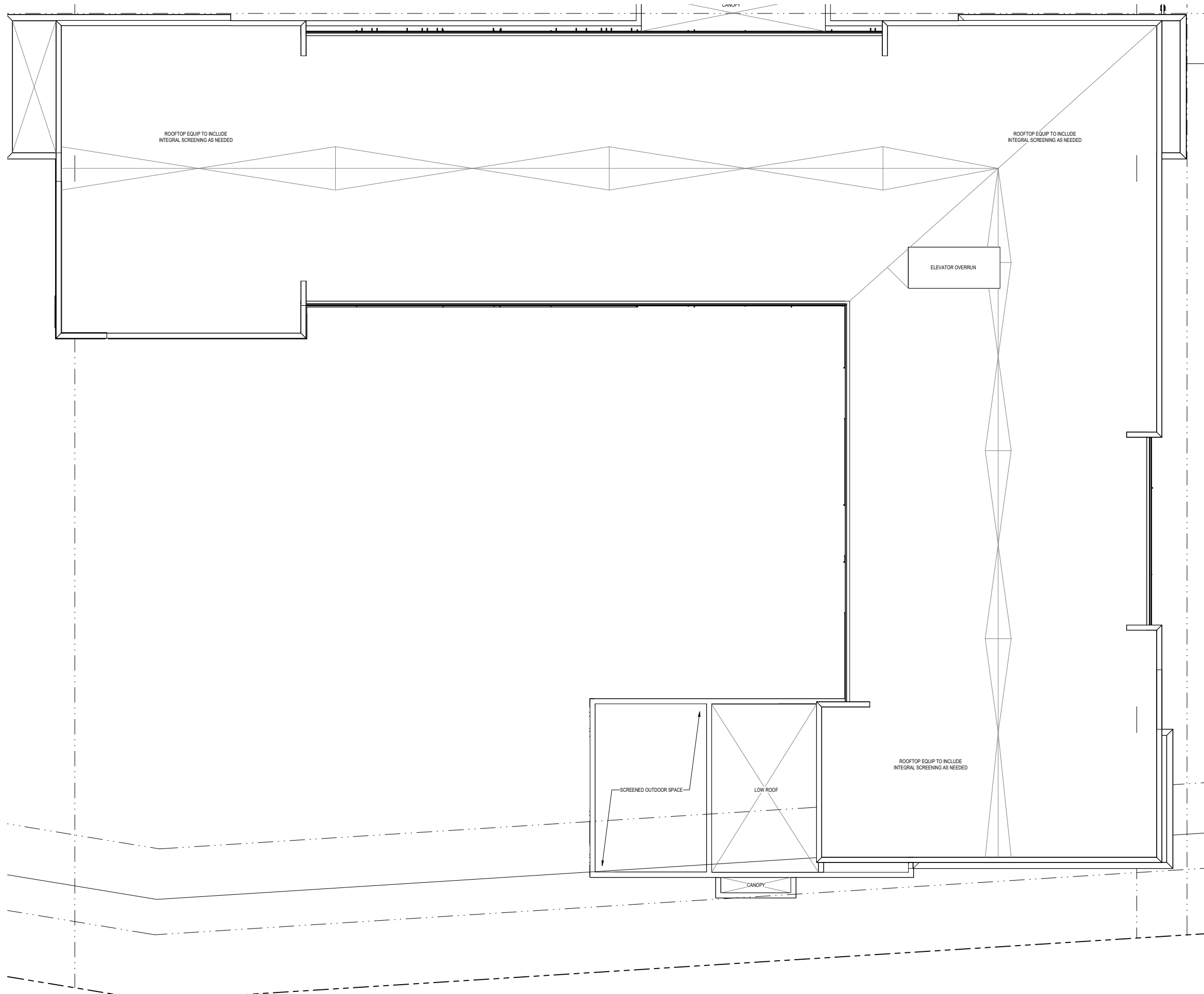






## PREVIOUS ROOF PLAN





PROPOSED ROOF PLAN



MODULAR BRICK - LIGHT GRAY



TEXTURED METAL PANEL



FIBER CEMENT BOARD - TAN



WOOD LOOK ACCENT



## PREVIOUS MATERIALS





MODULAR BRICK - LIGHT GRAY



TEXTURED METAL PANEL



FIBER CEMENT BOARD - TAN



WOOD LOOK ACCENT



## PROPOSED MATERIALS





**PREVIOUS PERSPECTIVE**





**PROPOSED PERSPECTIVE**





**PREVIOUS PERSPECTIVE**





**PROPOSED PERSPECTIVE**





**PREVIOUS PERSPECTIVE**





**PROPOSED PERSPECTIVE**





**PREVIOUS PERSPECTIVE**





## PROPOSED PERSPECTIVE





**PREVIOUS PERSPECTIVE**





**PROPOSED PERSPECTIVE**





**PREVIOUS PERSPECTIVE**





**PROPOSED PERSPECTIVE**





**PREVIOUS PERSPECTIVE**





## PROPOSED PERSPECTIVE





**PREVIOUS PERSPECTIVE**





## PROPOSED PERSPECTIVE





**PREVIOUS PERSPECTIVE**





**PROPOSED PERSPECTIVE**





**PREVIOUS PERSPECTIVE**





## PROPOSED PERSPECTIVE









**NEW PERSPECTIVE**









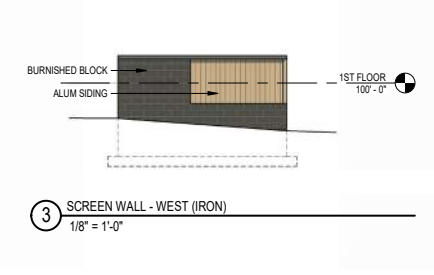
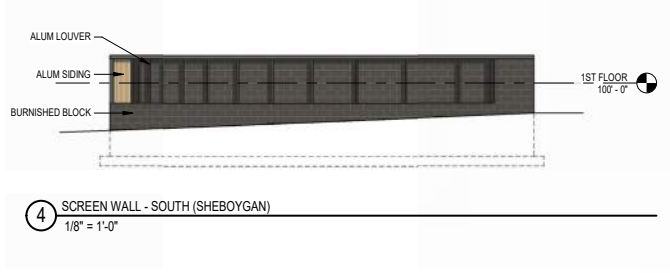
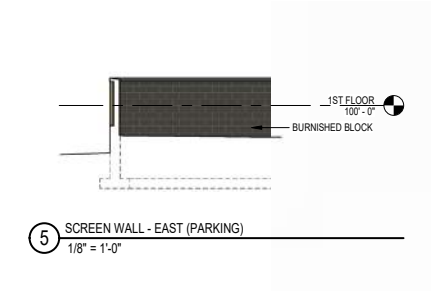
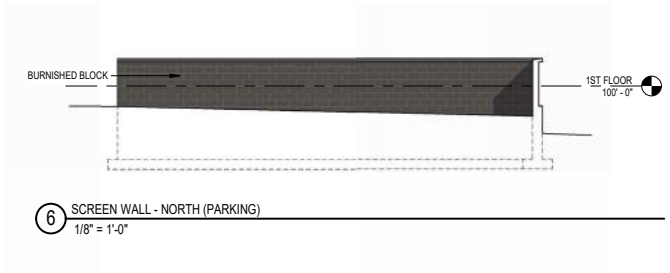
2 SOUTH ELEVATION  
1/8" = 1'-0"



1 NORTH ELEVATION  
1/8" = 1'-0"

# PREVIOUS ELEVATIONS





2 WEST ELEVATION  
1/8" = 1'-0"



1 EAST ELEVATION  
1/8" = 1'-0"

# PREVIOUS ELEVATIONS





# PROPOSED ELEVATIONS



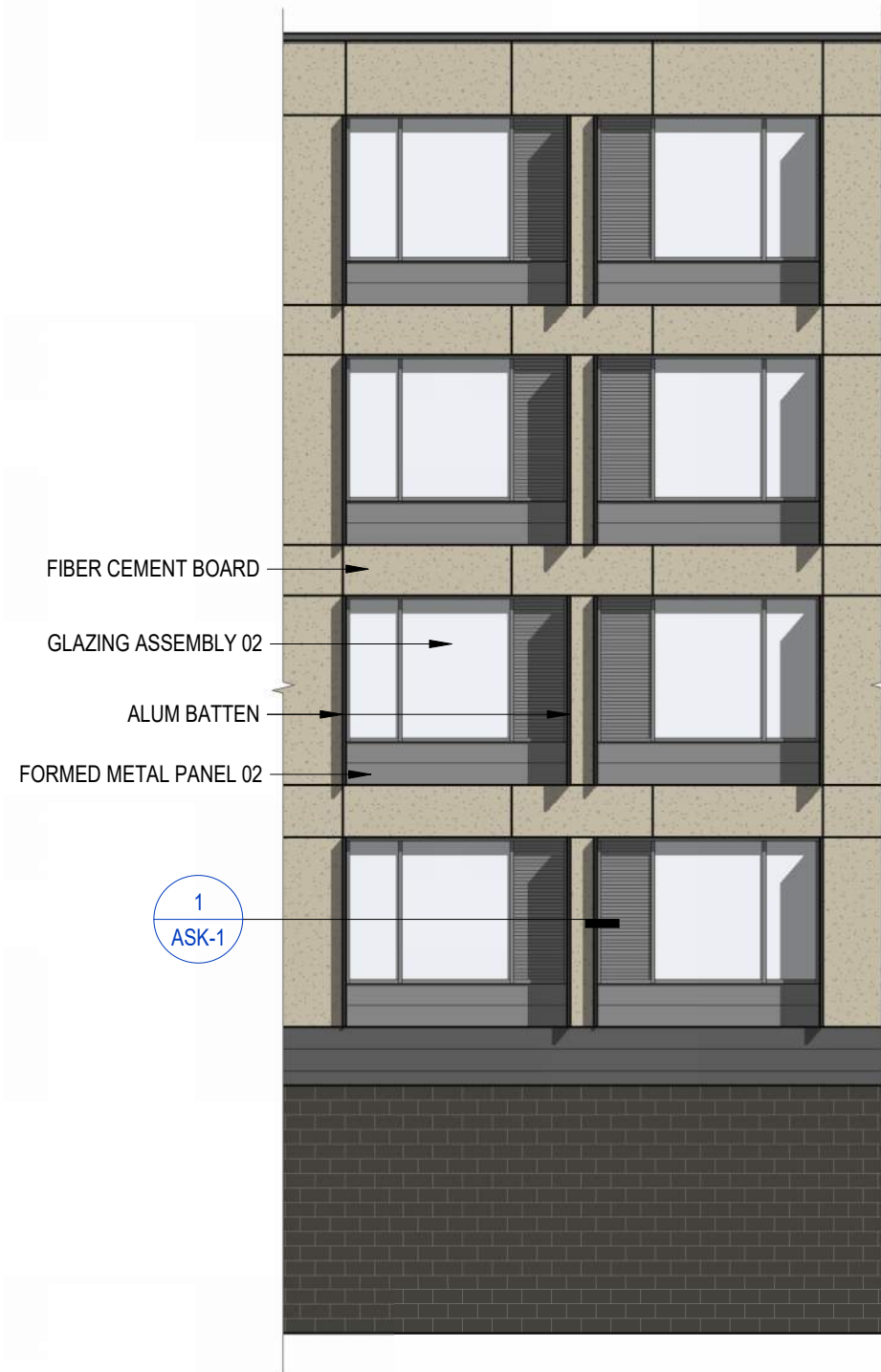


2 WEST ELEVATION  
1/8" = 1'-0"

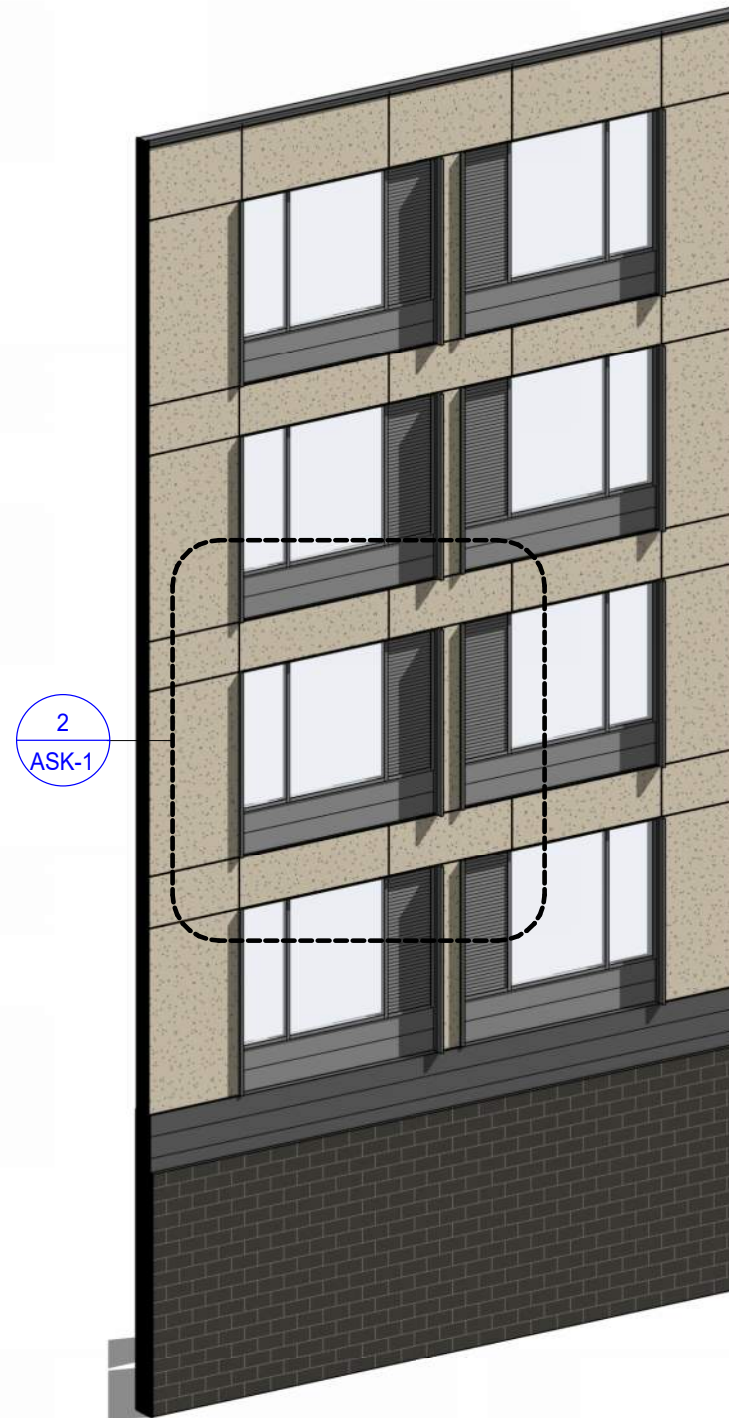


# PROPOSED ELEVATIONS





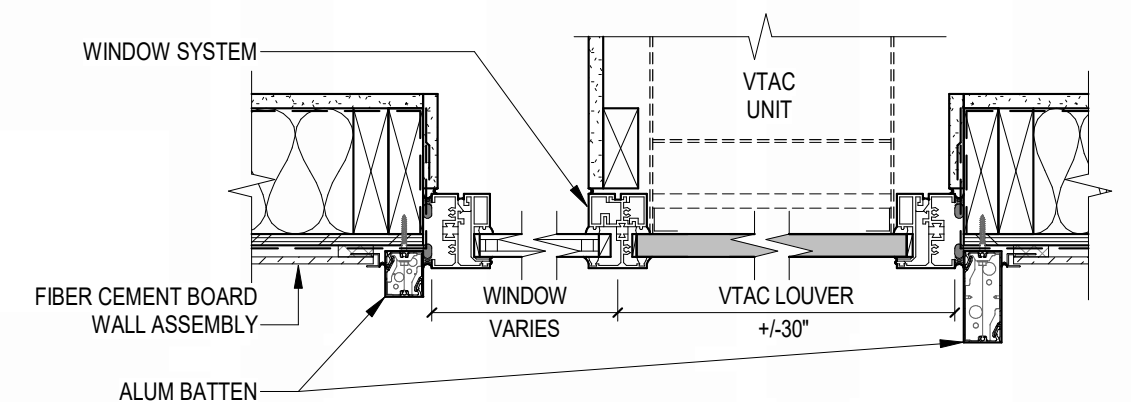
4 BAY ELEVATION - TYPICAL WINDOW



3 AXON - TYPICAL WINDOW BAY



2 AXON - TYPICAL WINDOW



1 PLAN DETAIL - WINDOW JAMB

## TYPICAL WINDOW



**Kahler Slater**

[www.kahlerslater.com](http://www.kahlerslater.com)