

# THE UNIVERSITY OF WISCONSIN

JOINT CAMPUS AREA COMMITTEE SUBMITTAL

22D5A CAMP RANDALL SPORTS CENTER REPLACEMENT

APRIL 25, 2024



CULLEN

bernerschaber





## PROJECT DESCRIPTION

### PROJECT COST: \$285,163,000

- Construction Costs
- Design and Professional Services
- Contingency
- Furniture, Fixtures, and Equipment

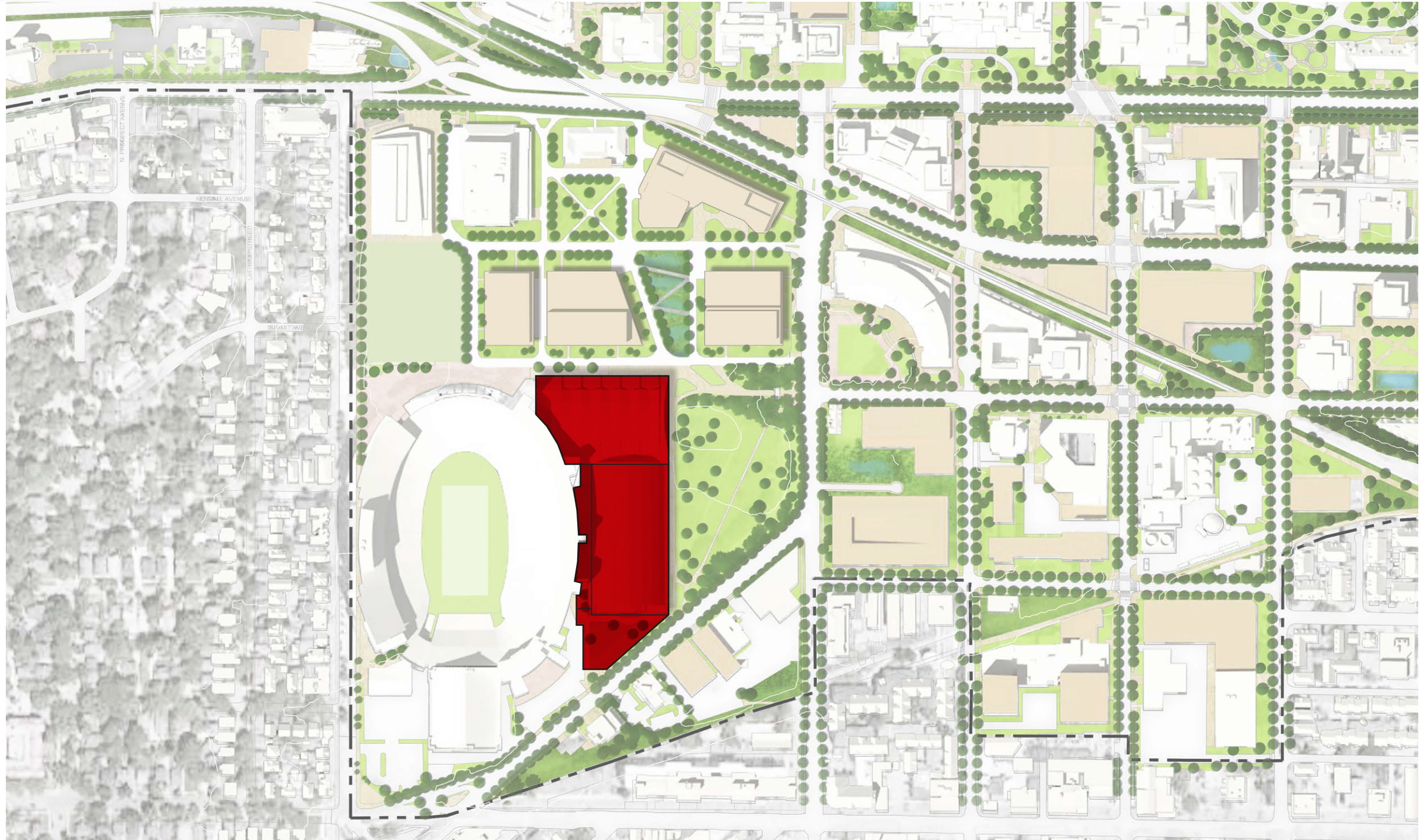
### PROJECT SIZE: 480,000 -500,000 GSF

- Footprint: 195,000 GSF

- Replace the existing McClain & Shell buildings with a new athletics training facility & indoor practice field. This facility will be the home of the football, men's & women's soccer, and men's & women's track programs .
- The new facilities helps meet critical space needs for each athletic personnel department in the building.
- Create a way to honor Wisconsin Military Veterans.
- Increase available parking on site for building occupants and public to utilize.
- Designed to promote natural lighting and views to the outdoor.
- Includes opportunities for revenue generation and interaction with the public.
- Enables potential future expansion projects to build vertically.

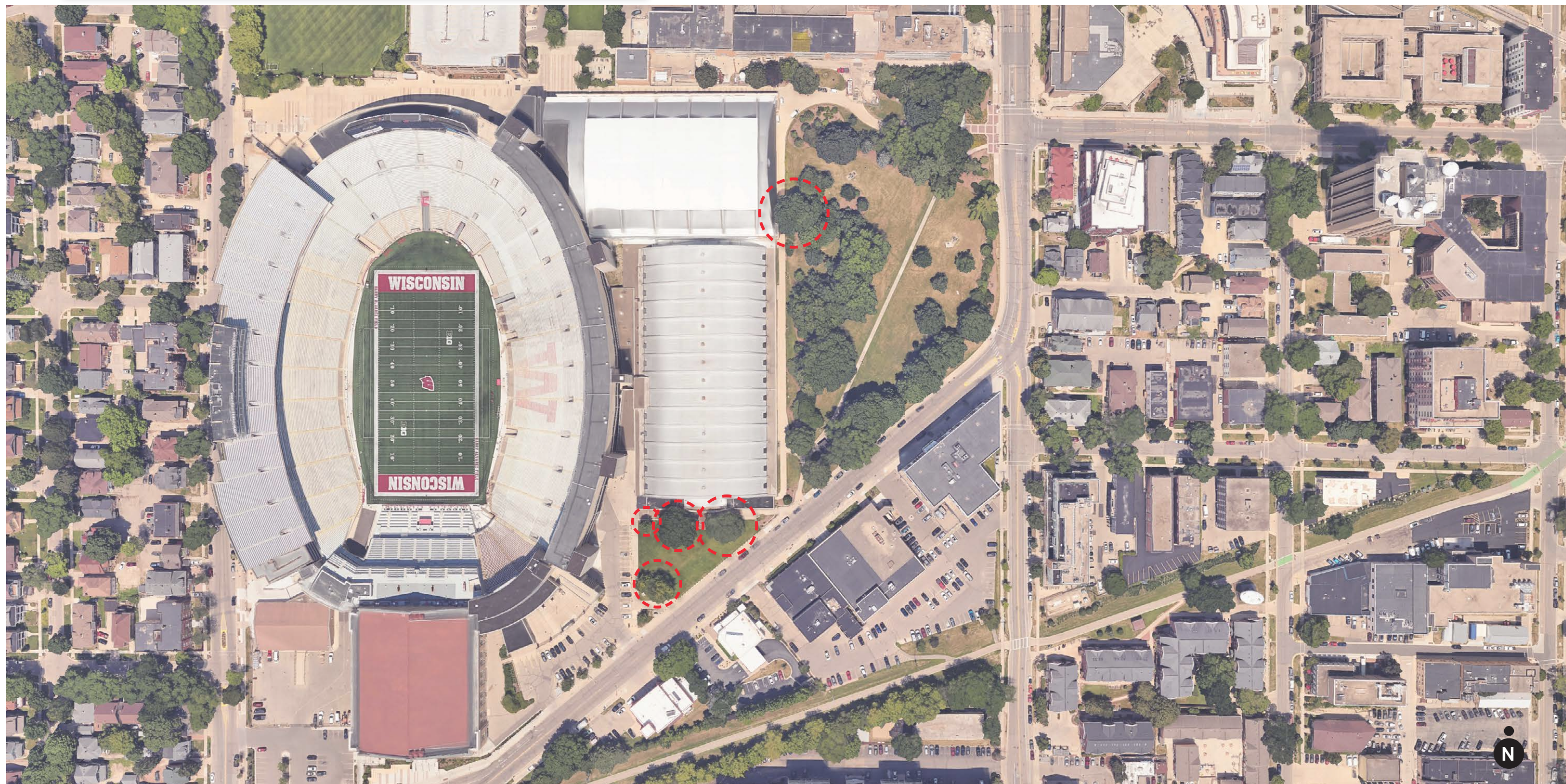


## CAMPUS CONTEXT





## EXISTING PROJECT SITE



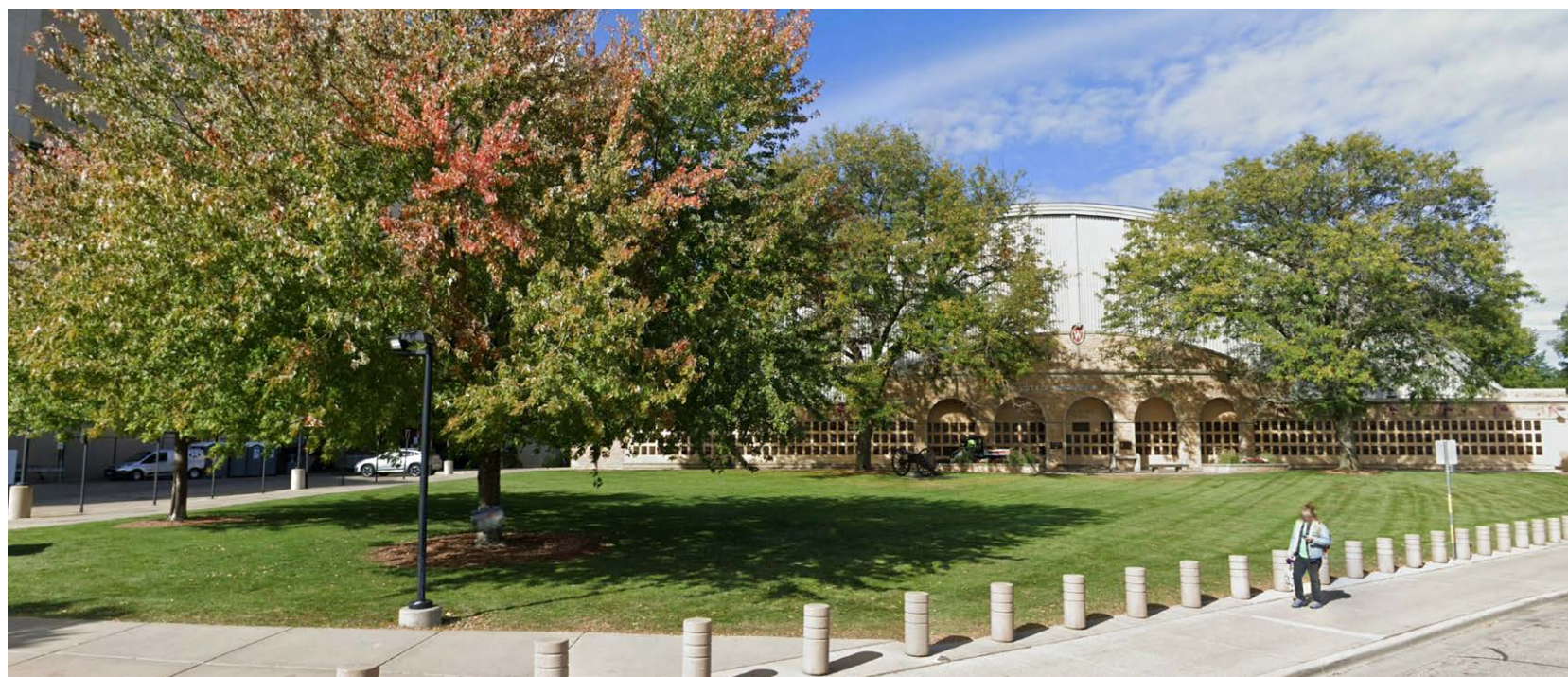


EXISTING PROJECT SITE



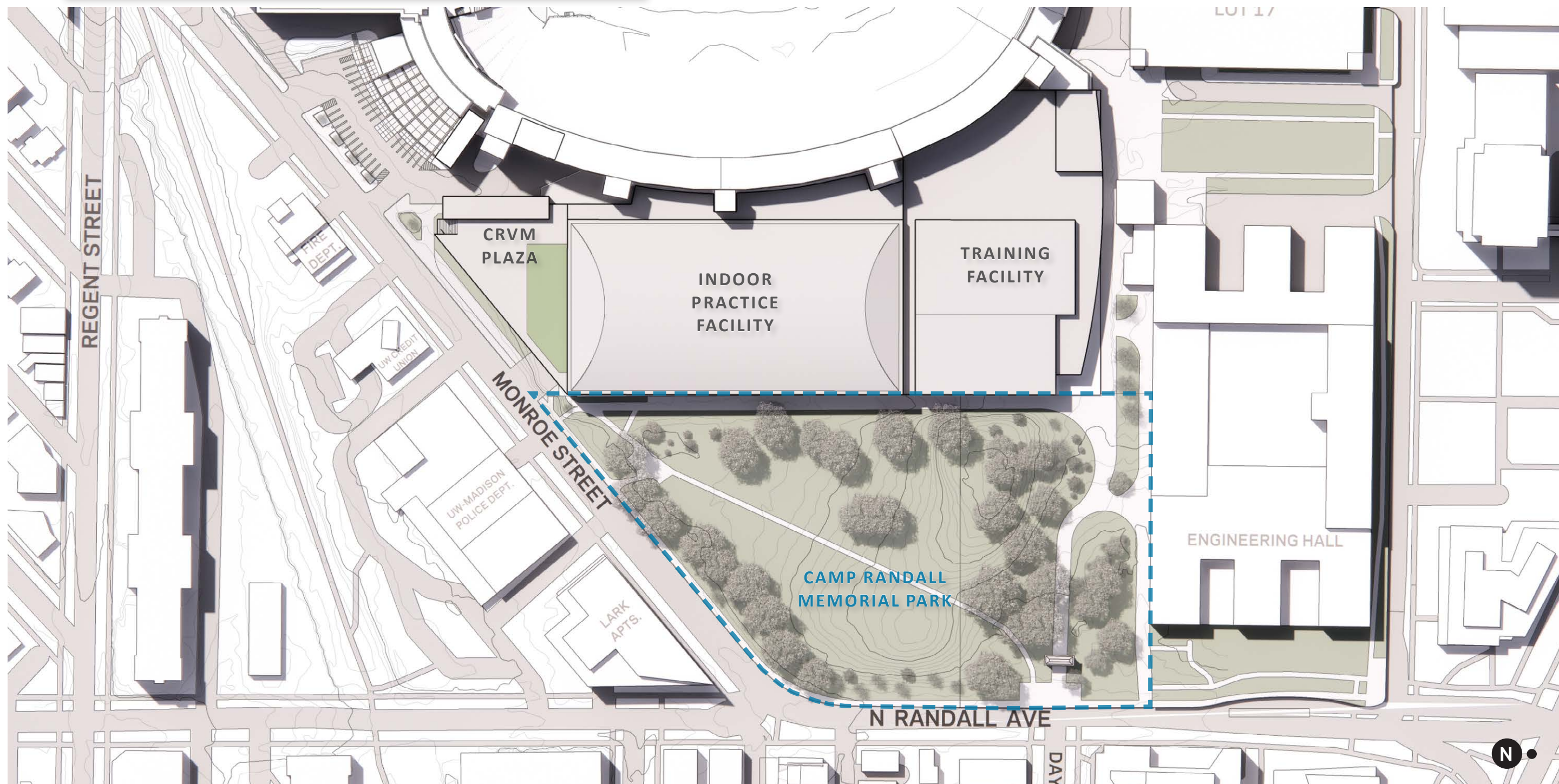


## EXISTING PROJECT SITE - TREES



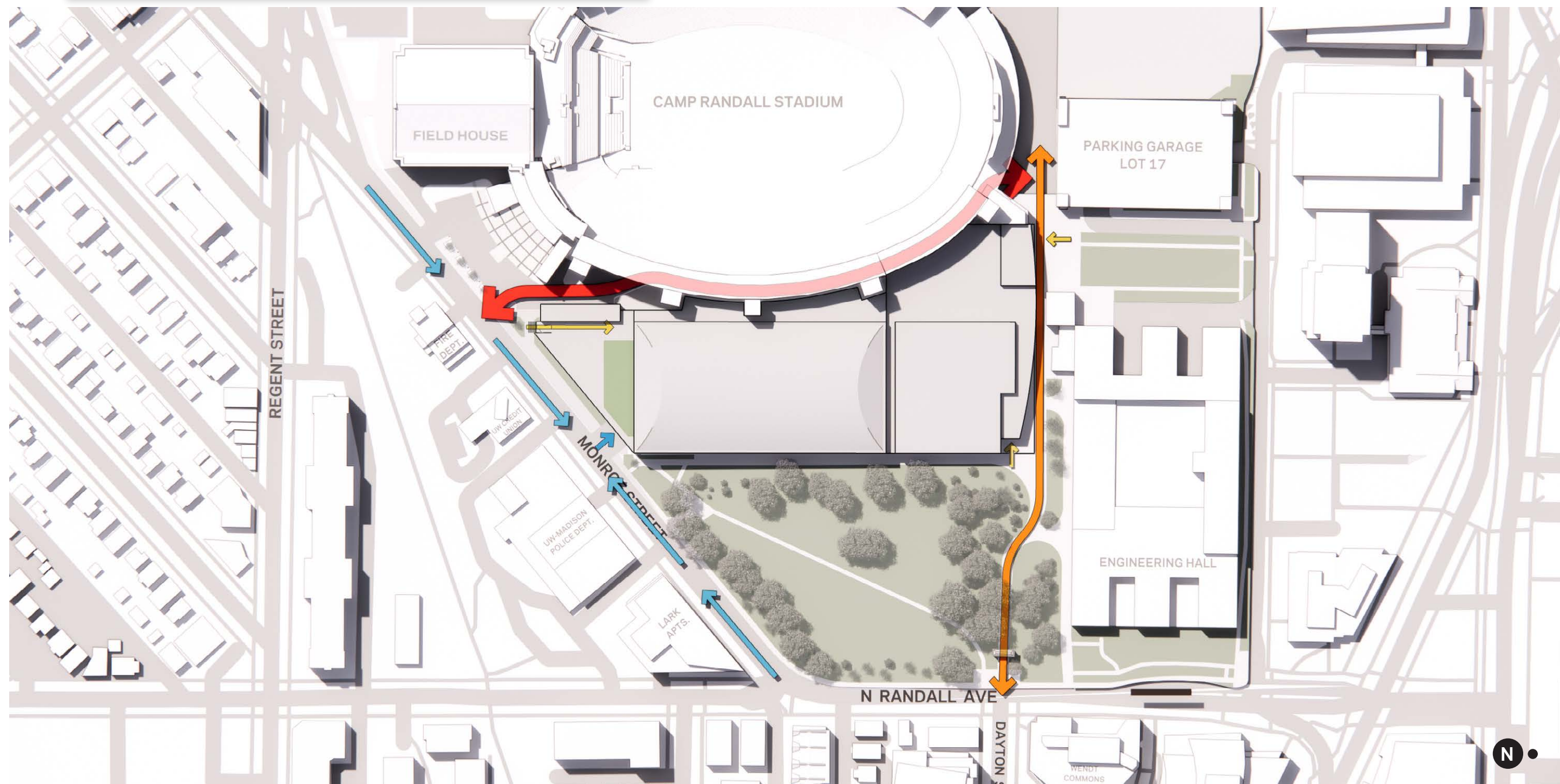


## PRELIMINARY SITE PLAN



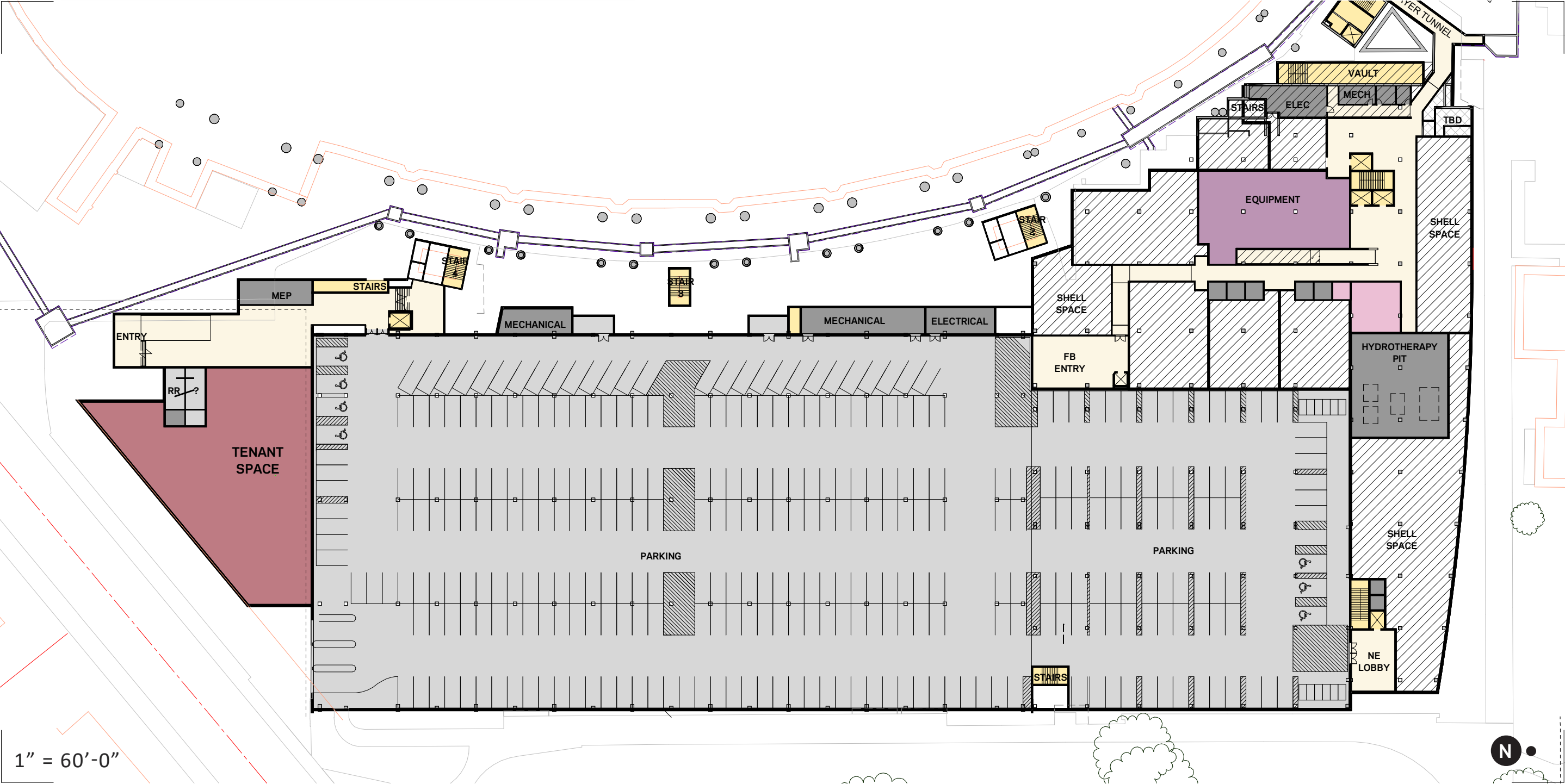


## SITE ACCESS &amp; CIRCULATION





LEVEL 0 - BASEMENT





LEVEL 1 - PLAYER LEVEL

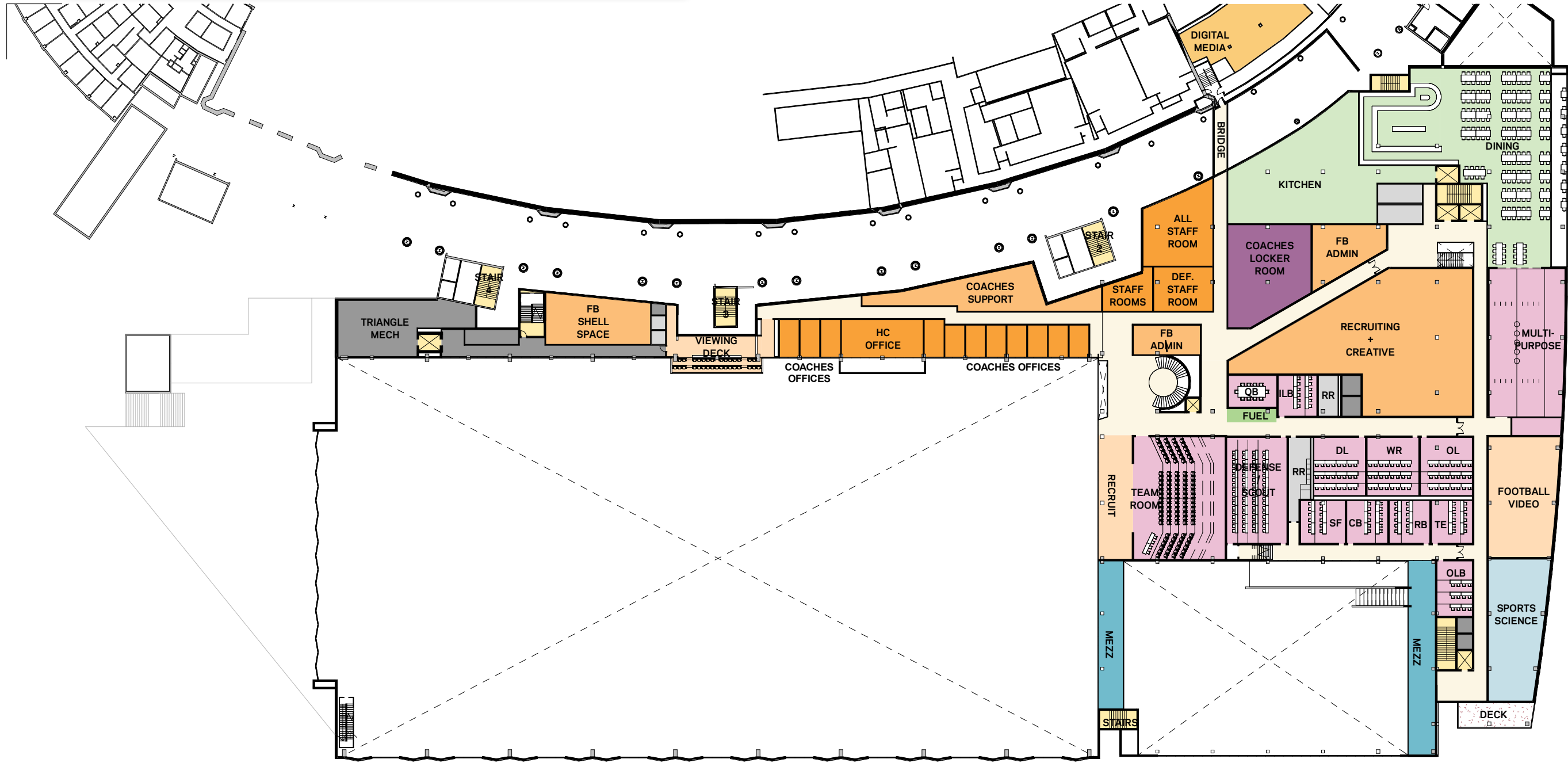


1" = 60'-0"





LEVEL 2 - FB STAFF LEVEL

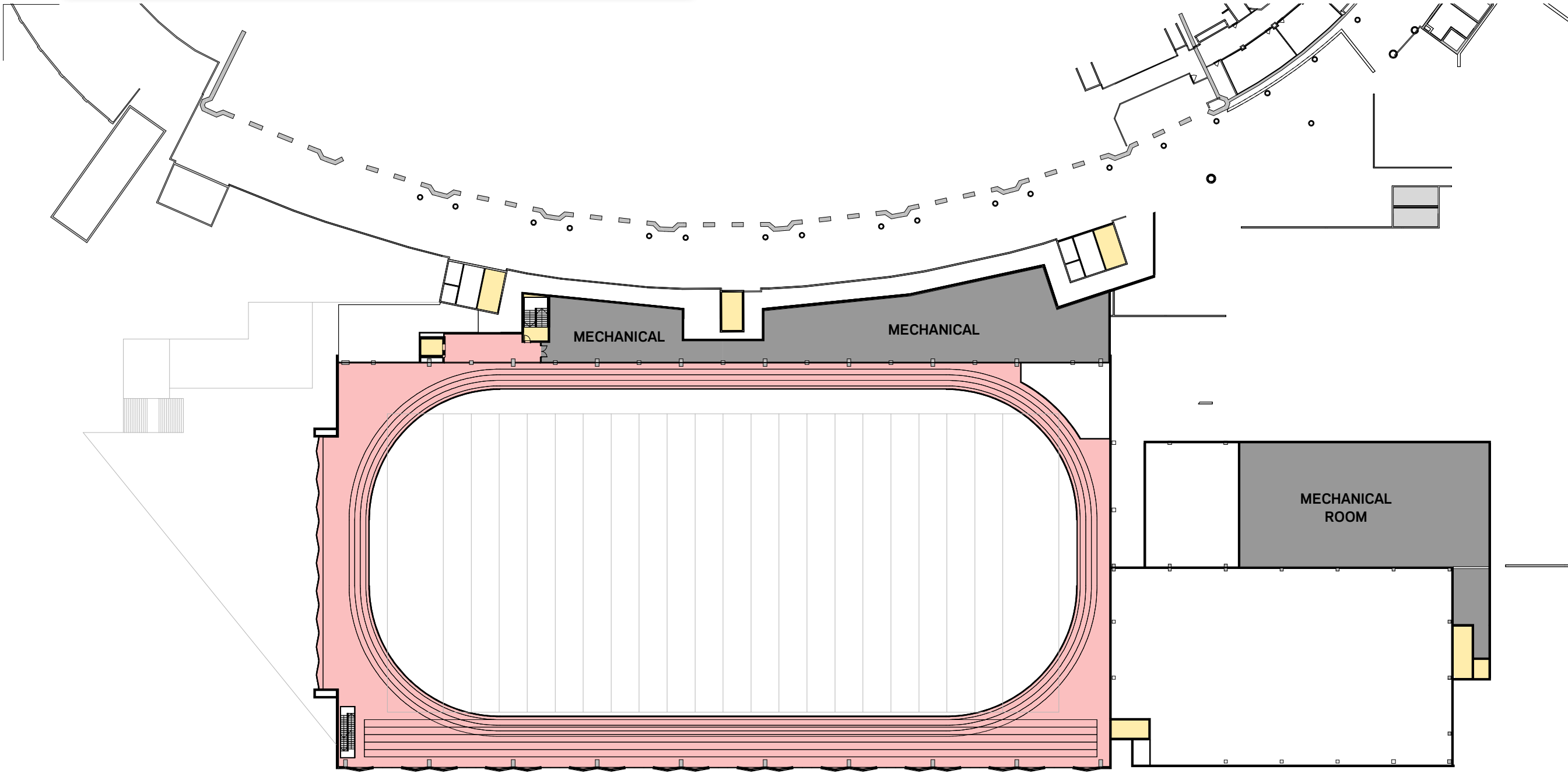


1" = 60'-0"





LEVEL 3 - TRACK MEZZANINE



1" = 60'-0"





## AERIAL SOUTHEAST



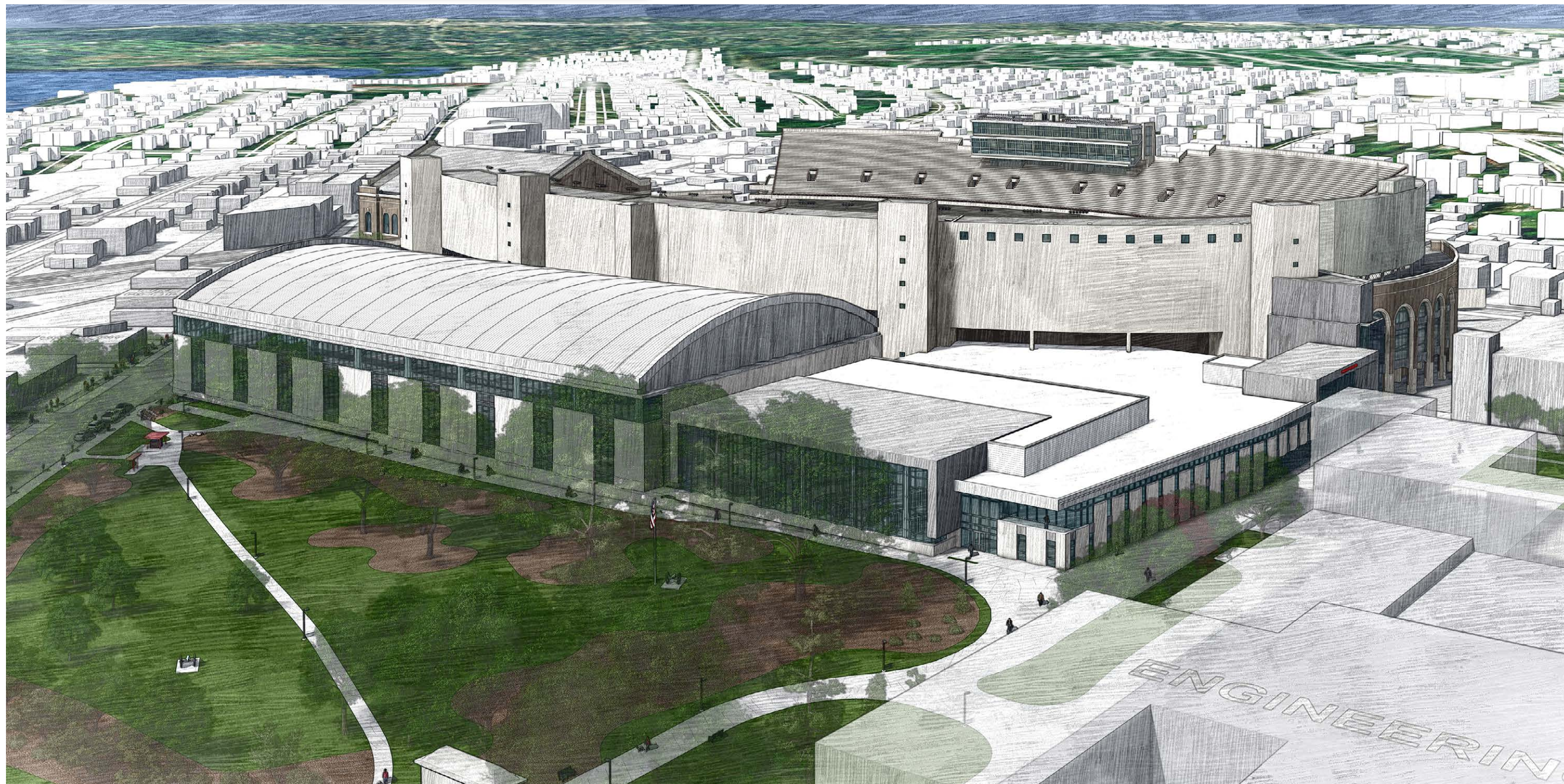


## AERIAL EAST



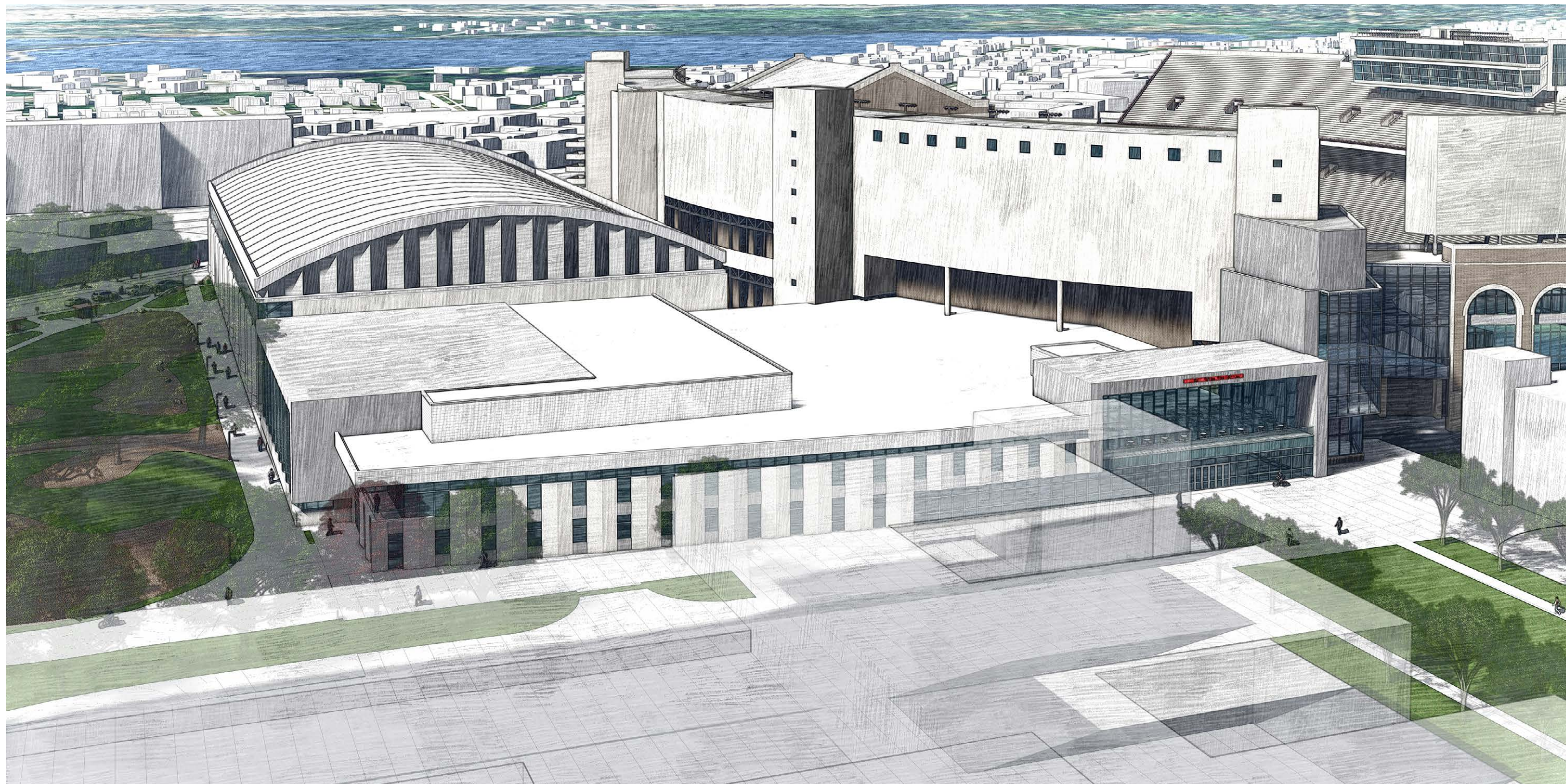


## AERIAL NORTHEAST





## AERIAL NORTH





**MAIN ENTRY FROM GREEN SPACE**



## NORTHEAST CORNER





**EAST PARK WALKWAY**



**MONROE STREET VIEW**



## MONROE STREET VIEW





## VETERANS PLAZA

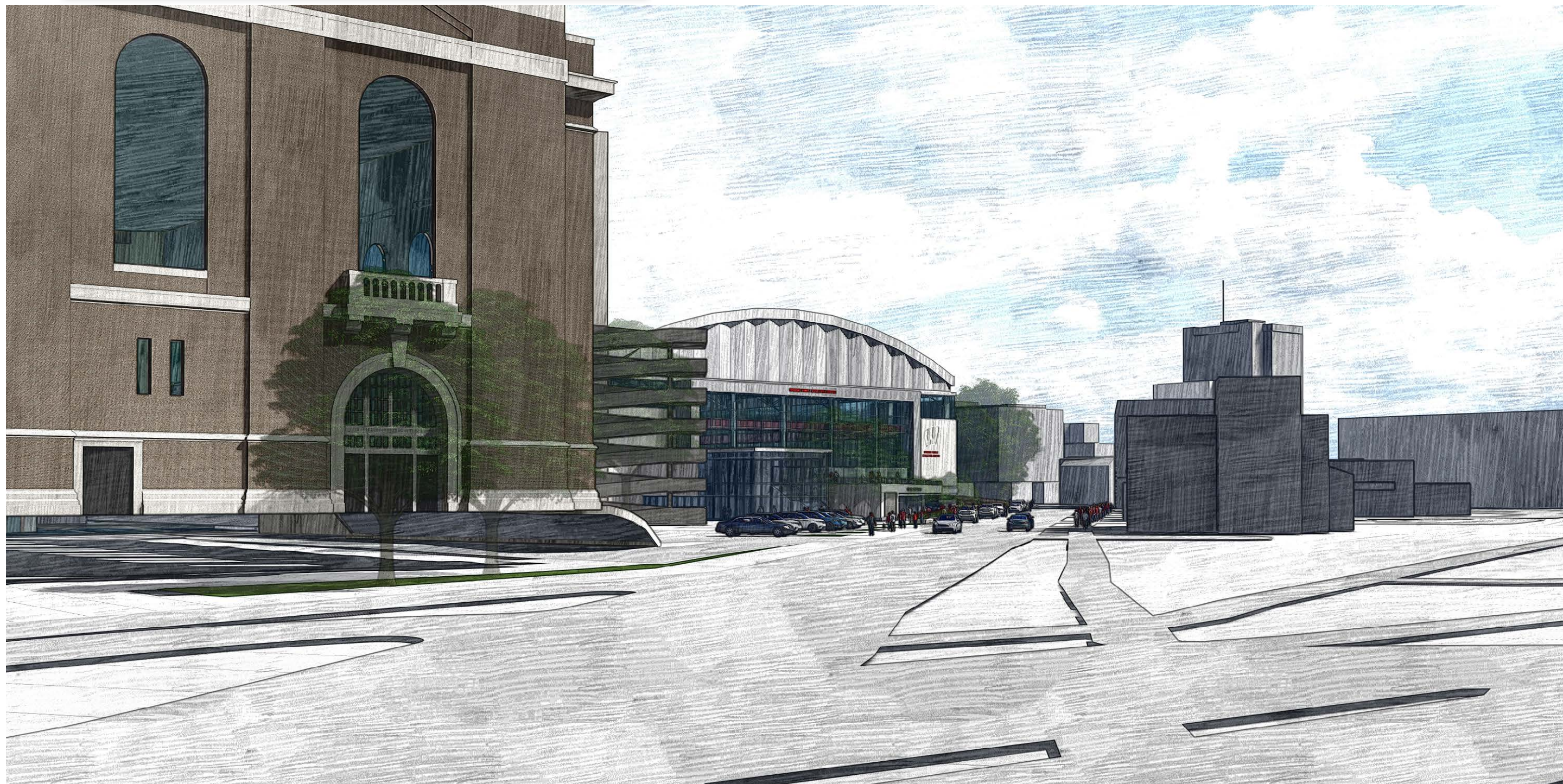




## STREET VIEW





**REGENT ST + MONROE ST INTERSECTION**



**MONROE STREET SIDEWALK**



## MONROE STREET SIDEWALK





## PHASE 0 - TODAY

## PRELIMINARY DATES

START: Now  
END: August 1, 2024

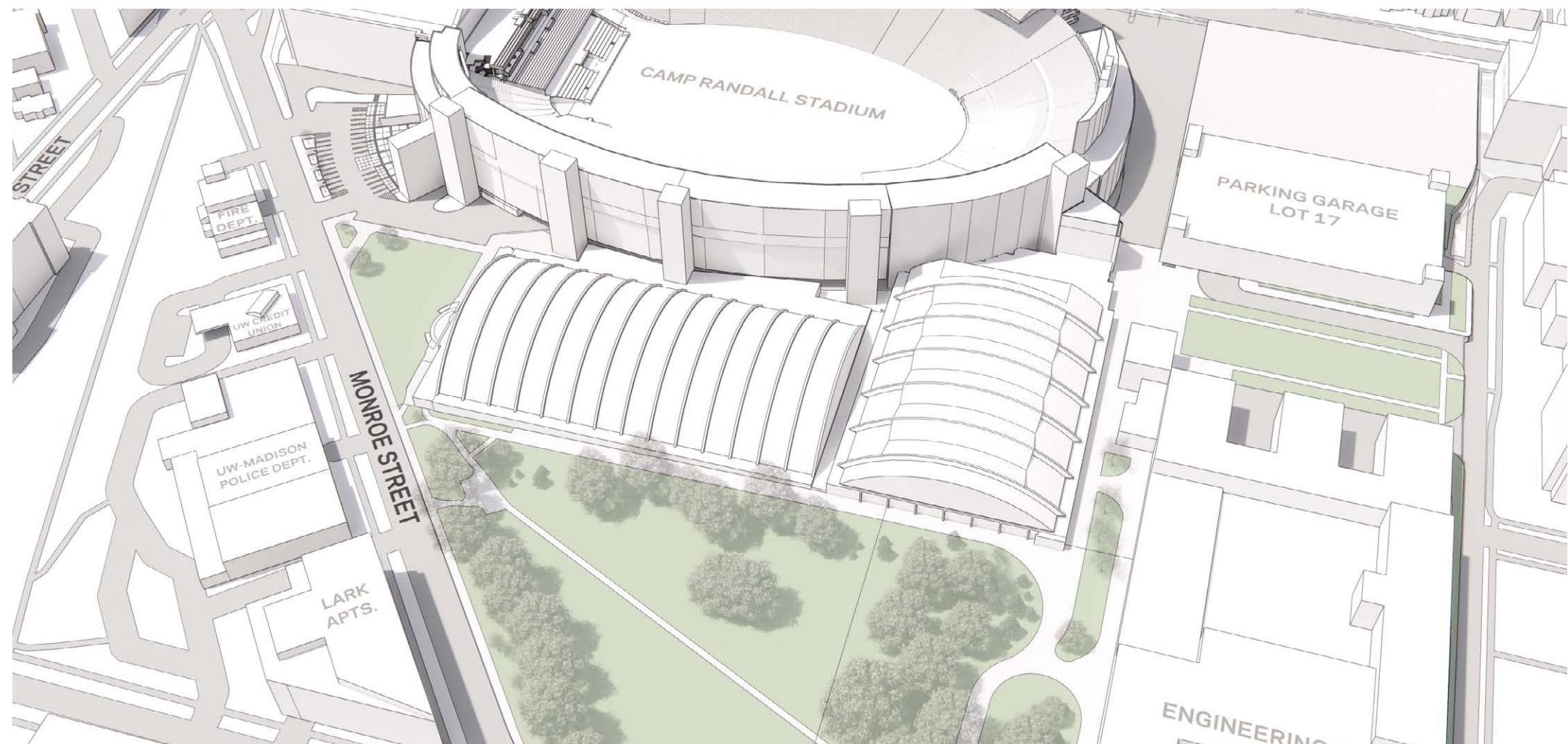
[illegible]

**SHELL / IPF**

## TRIANGLE AREA

**MCCLAIN / TRAINING FACILITY**

## CAMP RANDALL SPACES





## PHASE 1 - DEMO THE SHELL

## PRELIMINARY DATES

START: August 1, 2024

END: November 1, 2024

[illegible]

**SHELL / IPF**

- Demolition of the existing Shell facility.

## TRIANGLE AREA

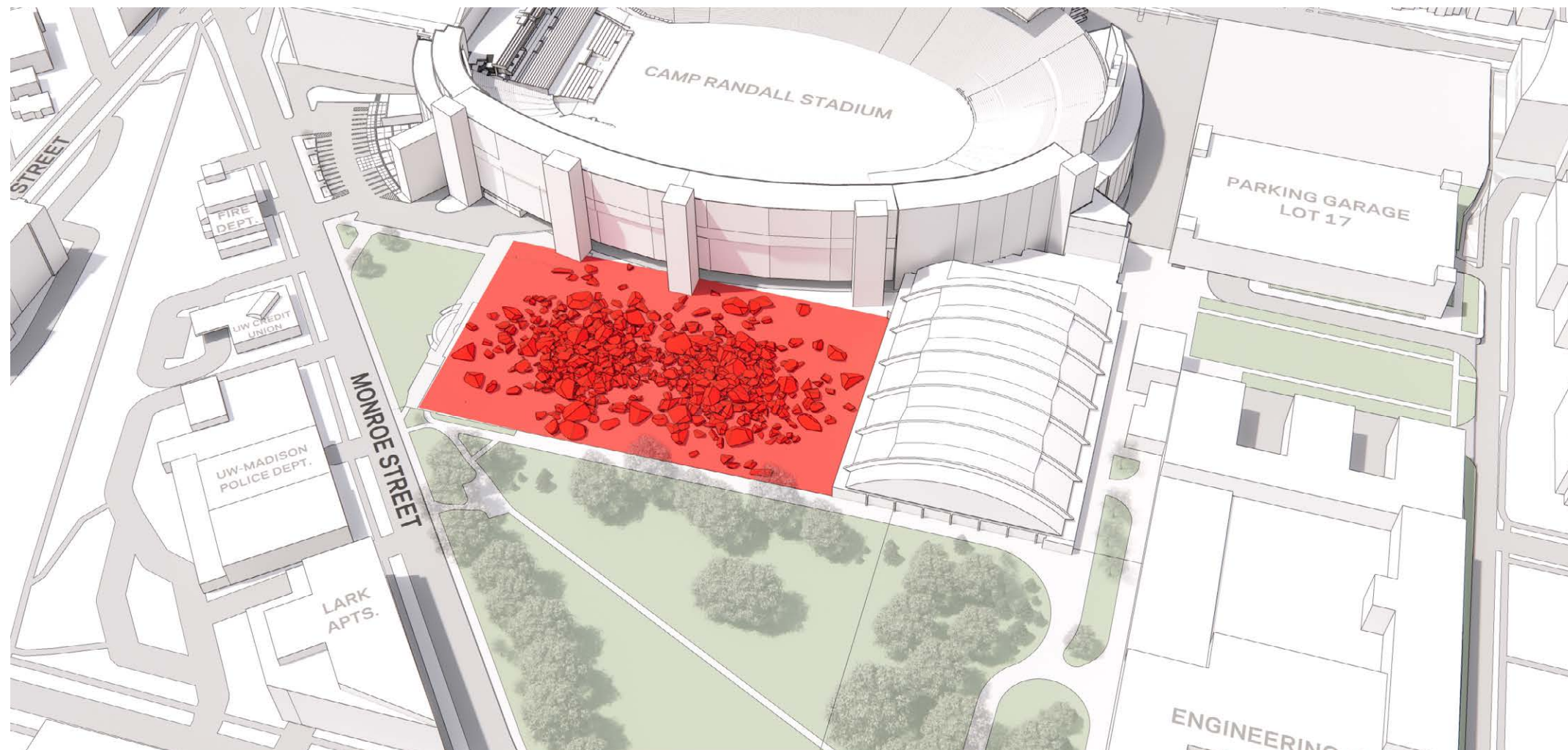
- Utilized for construction access.

**MCCLAIN / TRAINING FACILITY**

- Still occupied by student-athletes.

## CAMP RANDALL SPACES

- Still occupied by staff and student-athletes.





## PHASE 2 - CONSTRUCTION OF IPF

## PRELIMINARY DATES

START: November 1, 2024

END: March 1, 2026

[illegible]

## SHELL / IPF

- New IPF Facility and supporting spaces (Bow Tie structure) are being constructed

### TRIANGLE AREA

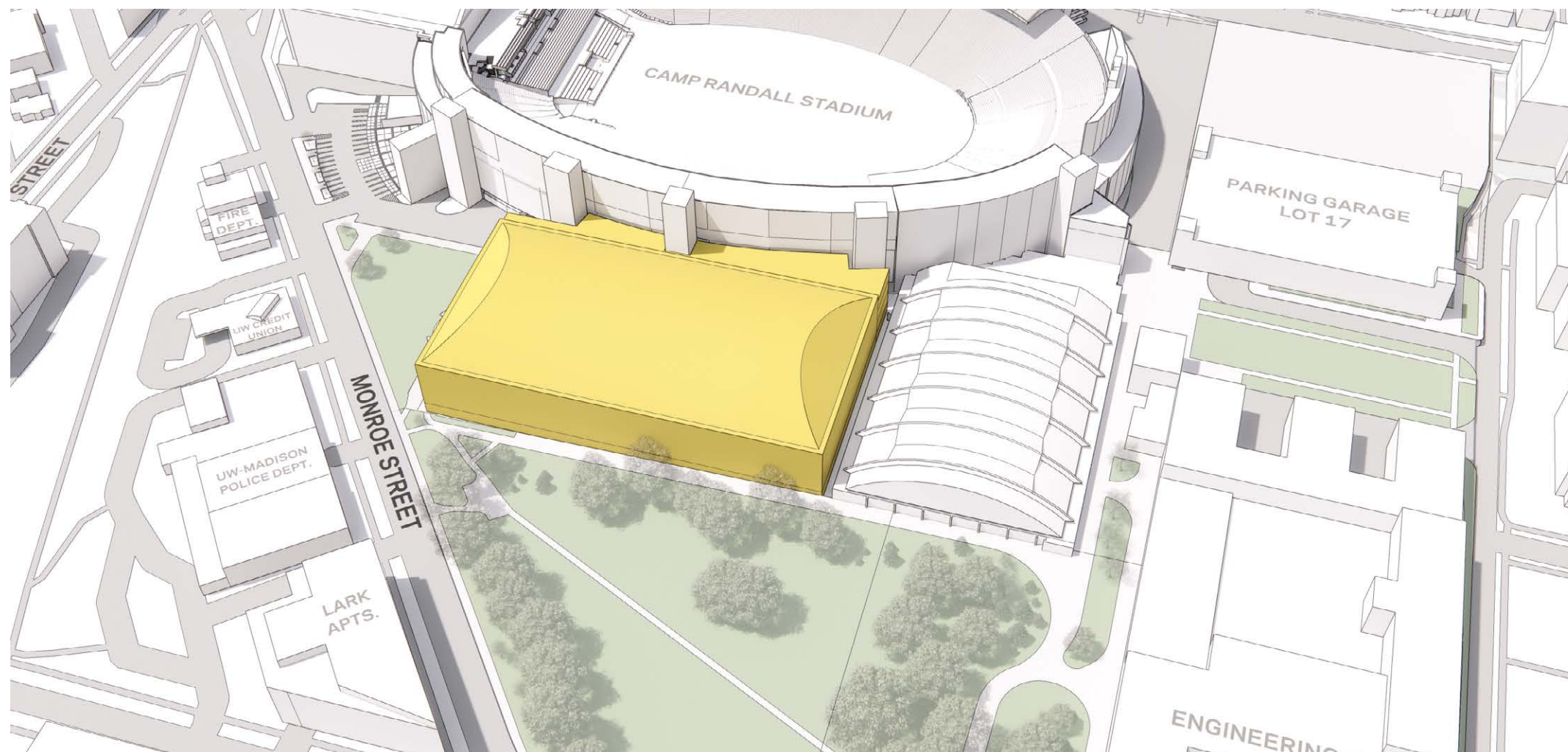
- Utilized for construction access.

**MCCLAIN / TRAINING FACILITY**

- Still occupied by student-athletes

## CAMP RANDALL SPACES

- Still occupied by staff and student-athletes









## PHASE 4 - DEMOLISH McCLAIN

### PRELIMINARY DATES (TRIANGLE)

START: December 1, 2025

END: Decemebr 1, 2026

## PRELIMINARY DATES (DEMO IPF)

START: February 1, 2026

END: May 1, 2026

[illegible]

## SHELL / IPF

- Complete and fully functional

## TRIANGLE AREA

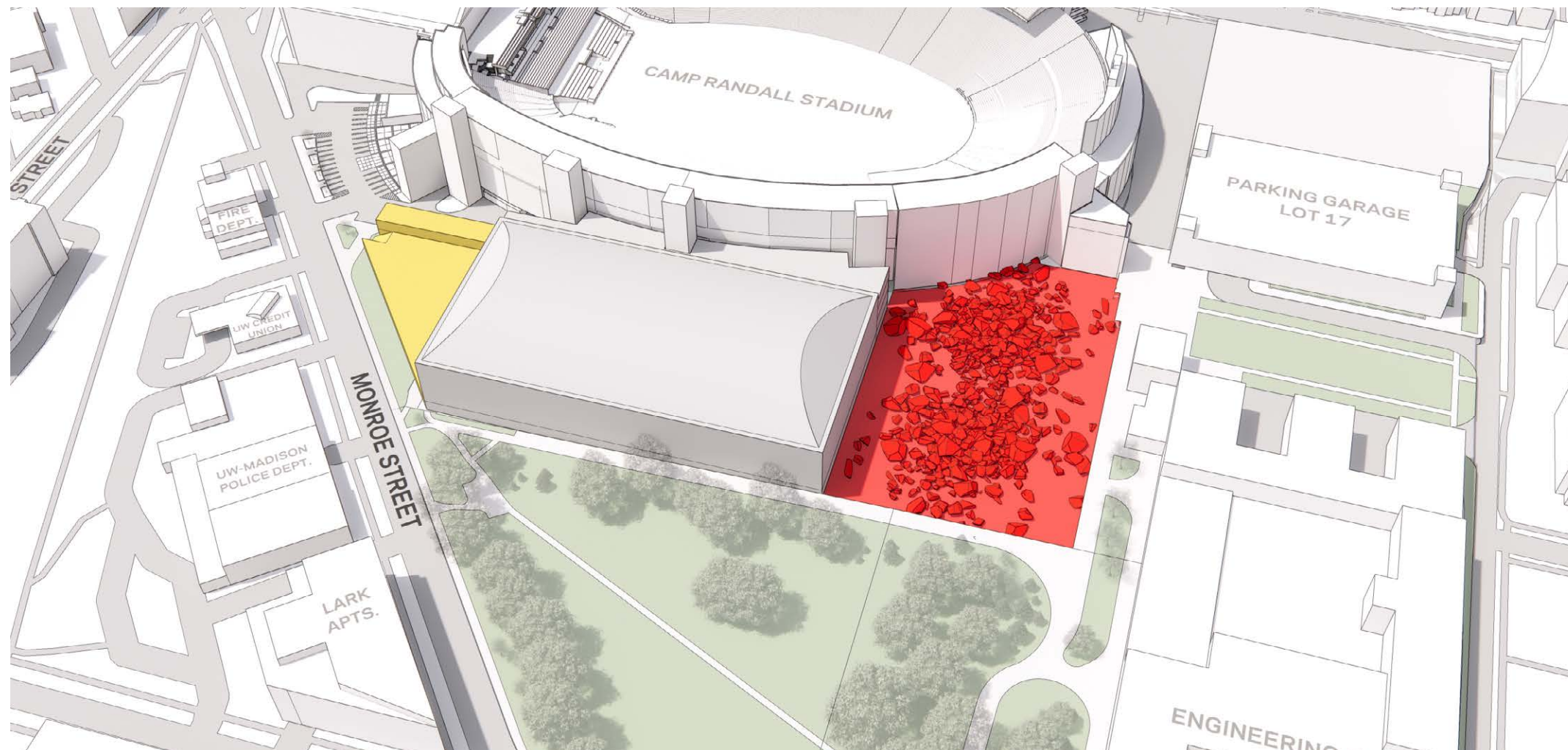
- Construction in "full swing".

**MCCLAIN / TRAINING FACILITY**

- Existing McClain demolished.

## CAMP RANDALL SPACES

- Still functional for staff and student-athletes. Temporary locations being used.









PHASE 6 - TRAINING FACILITY CONSTRUCTION

PRELIMINARY DATES

START: May 1, 2026  
END: September 1, 2027

	2024												2025												2026												2027												2028		
	J	F	M	A	M	J	J	A	S	O	N	D	J	F	M	A	M	J	J	A	S	O	N	D	J	F	M	A	M	J	J	A	S	O	N	D	J	F	M												
Shell / IPF																																																			
Triangle																																																			
McClain / TF																																																			
Camp Randall																																																			

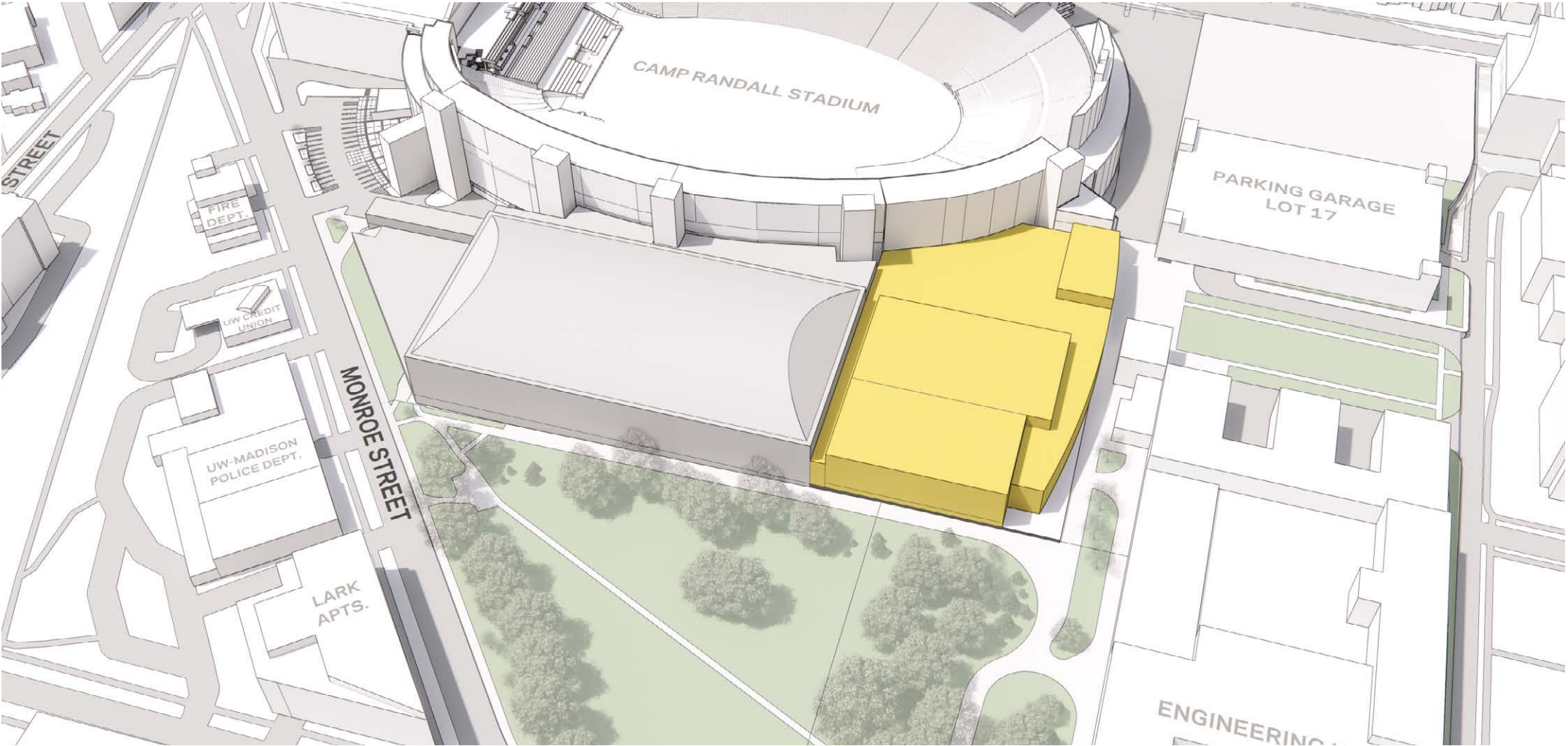
- SHELL / IPF**

  - Complete and fully functional
- TRIANGLE AREA**

  - Complete and fully functional
- MCCLAIN / TRAINING FACILITY**

  - Construction continues on new Training Facility.
- CAMP RANDALL SPACES**

  - Still functional for staff and student-athletes. Temporary locations being used.





## PHASE 7 - RENOVATE VACATED SPACES

## PRELIMINARY DATES

START: September 1, 2027

END: TBD

[illegible]

## SHELL / IPF

- Complete and fully functional

## TRIANGLE AREA

- Complete and fully functional

**MCCLAIN / TRAINING FACILITY**

- Complete and fully functional

## CAMP RANDALL SPACES

- Renovate vacated spaces and remove temporary conditions.

