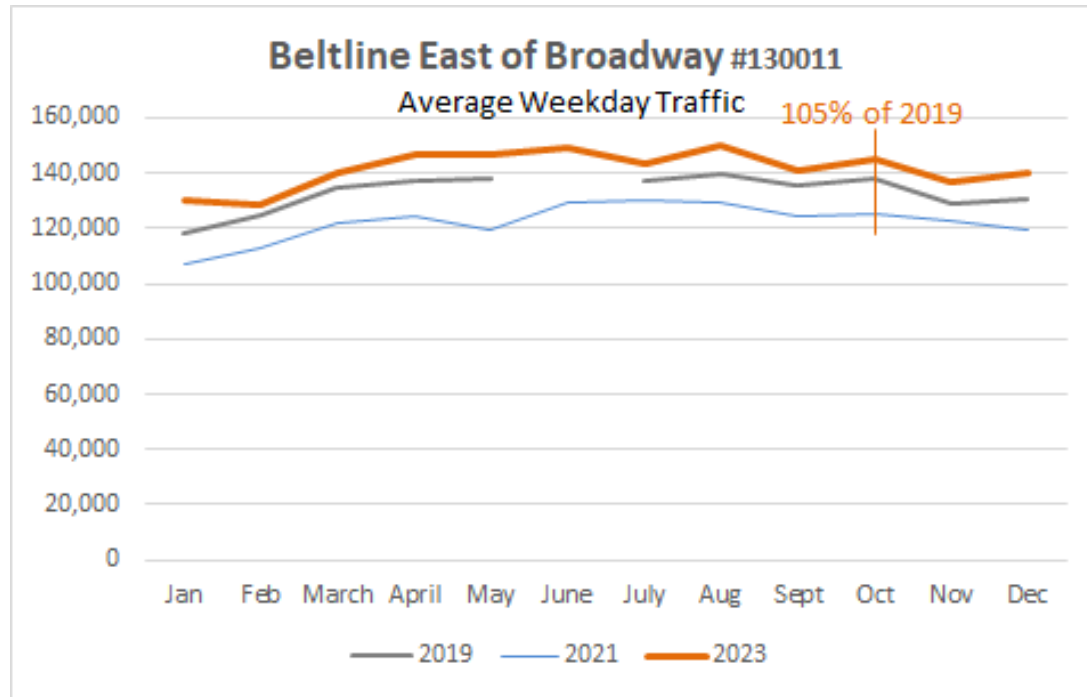


The background of the slide is a composite image. The top-left portion shows a construction site with several yellow excavators working on a large pile of rubble and debris. In the background of this site are several multi-story brick buildings. The bottom-right portion shows the front and side of a dark blue bus. The bus has a white 'm' logo on its front and the text 'tjänst ordern' below it. A large, solid blue diagonal shape cuts across the center of the slide, separating the construction site from the bus.

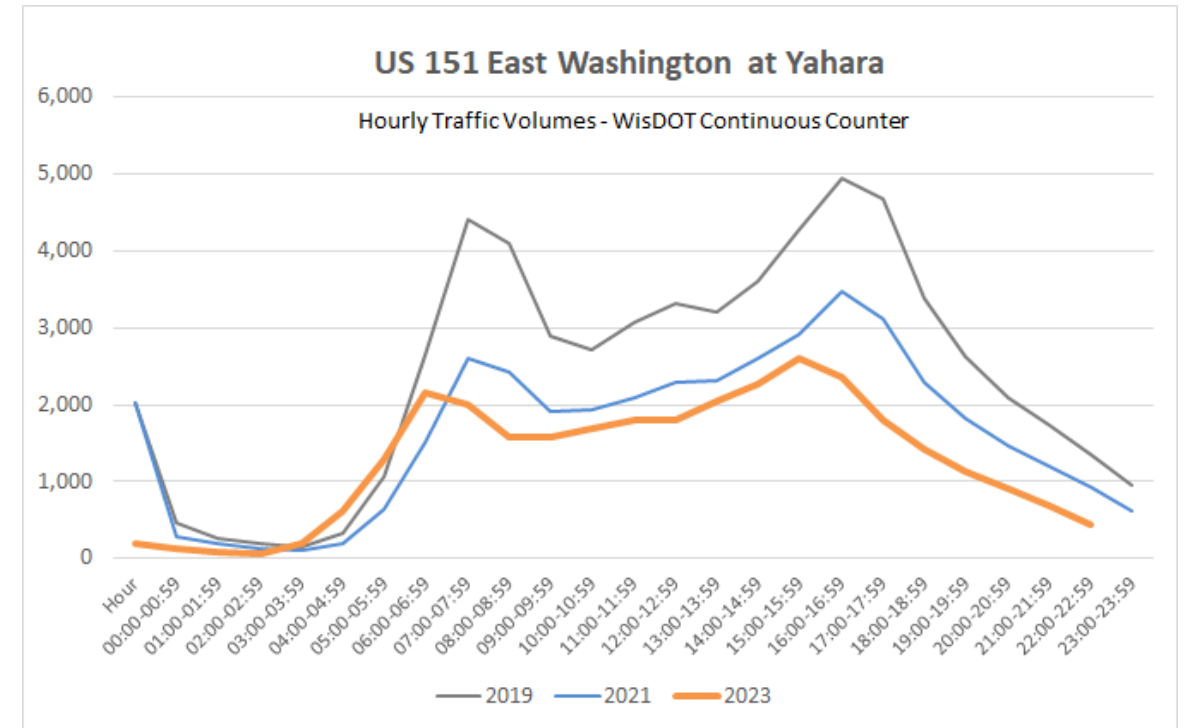
2023 Annual Operation Report

March 22, 2024

Traffic

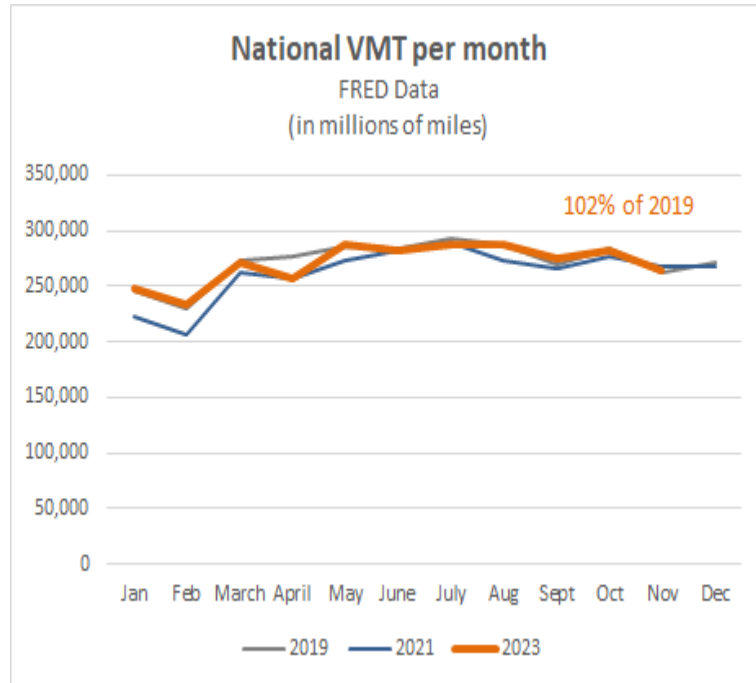


Traffic has recovered on State Routes such as the Beltline

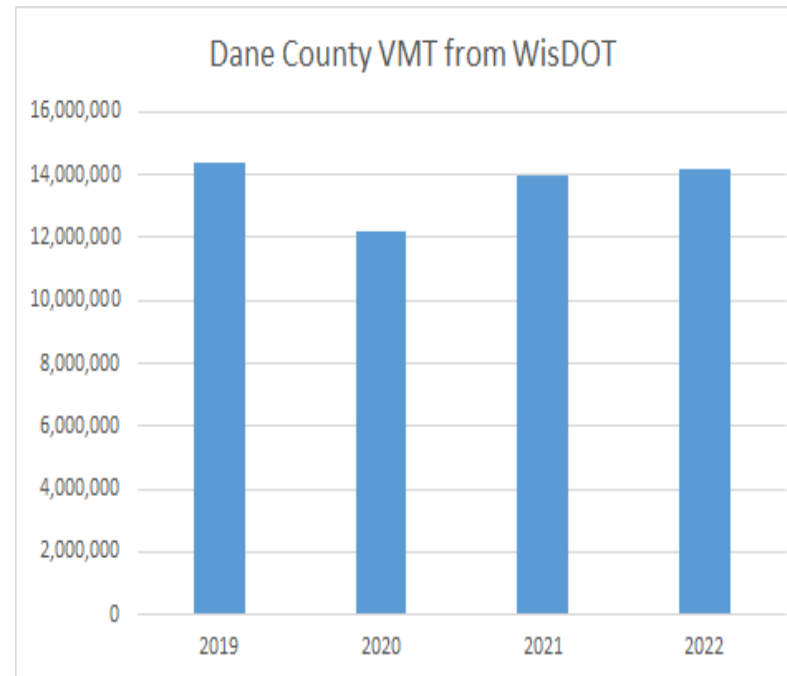


On routes serving downtown employment, traffic remains lower than pandemic with more muted peaks

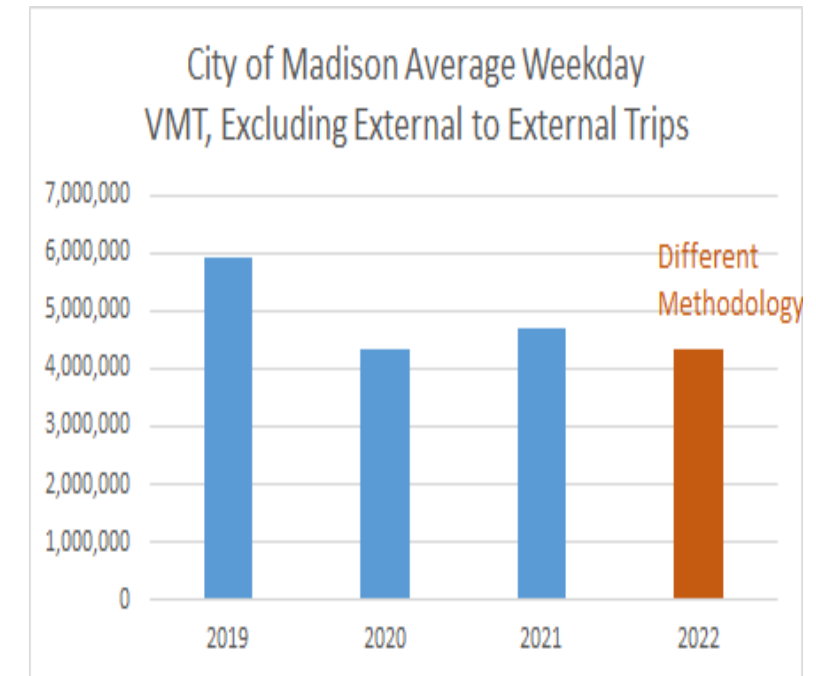
Vehicle Miles Traveled



National VMT has recovered from pre-pandemic

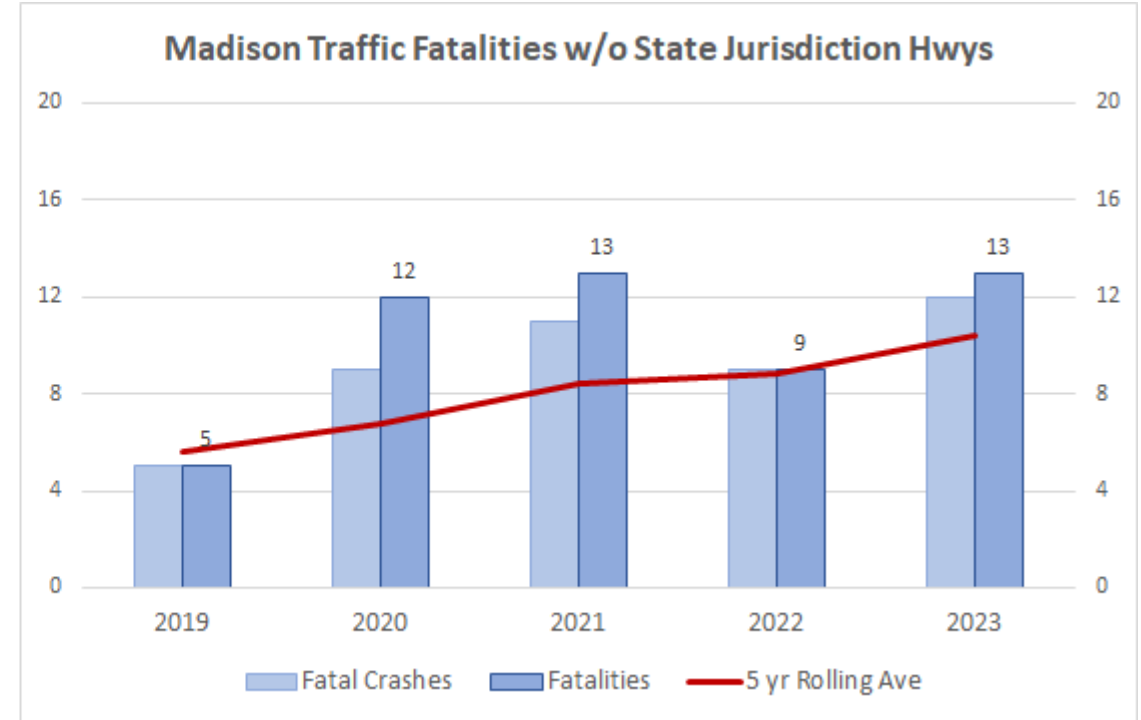
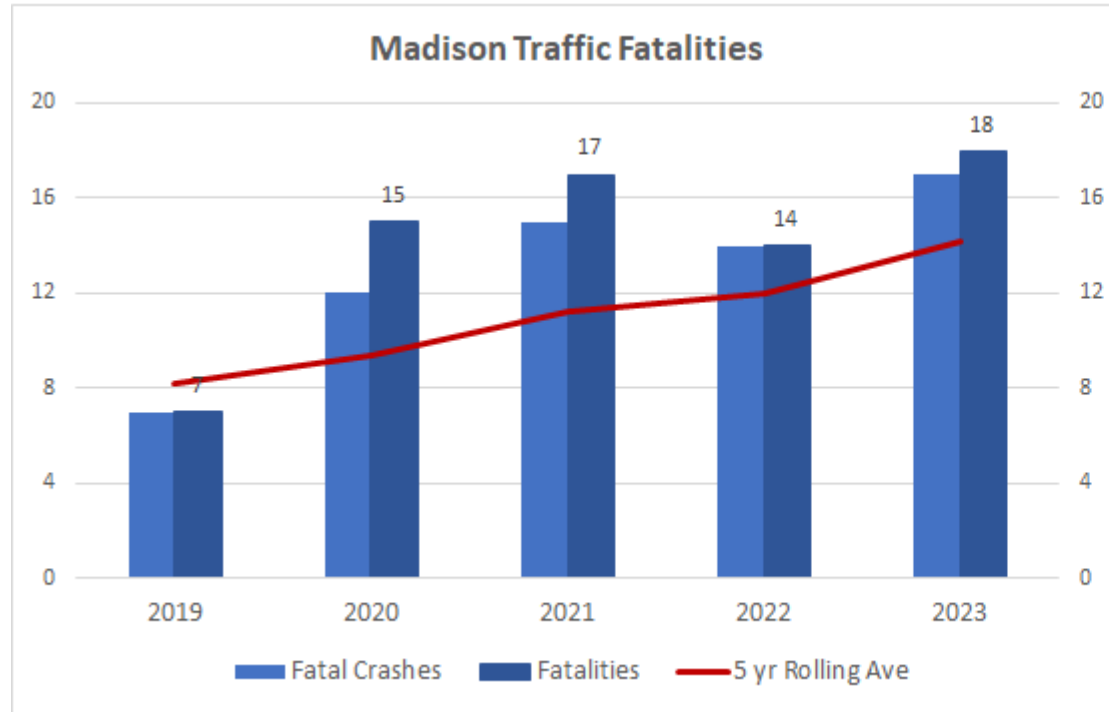


Dane County VMT has recovered from pre-pandemic



Unclear if Madison VMT is staying low

Traffic Fatalities



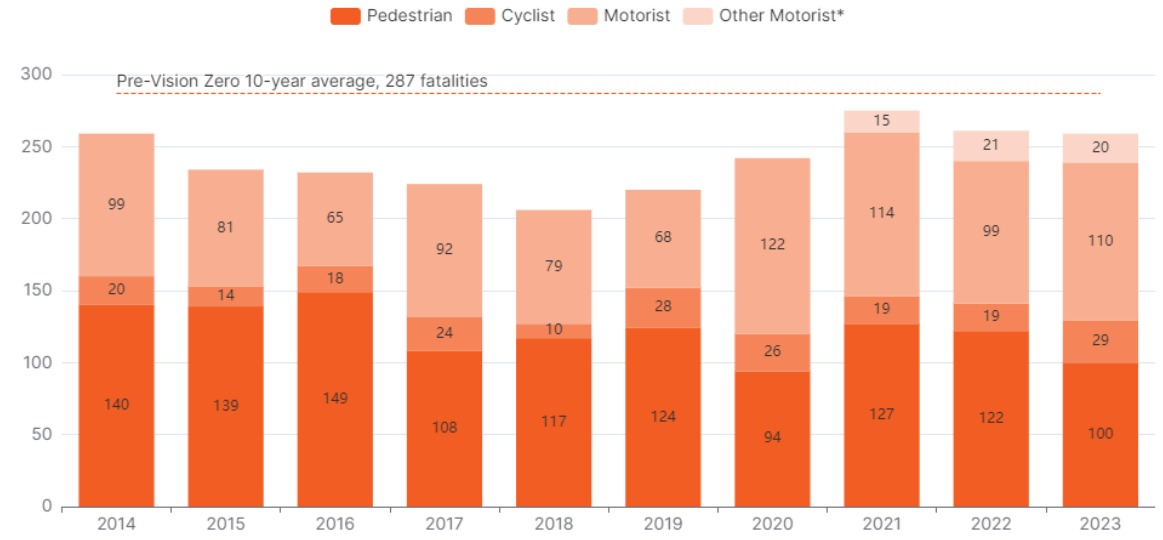
In 2023 Traffic Fatalities were Up

*Numbers slightly different from MPD data.

New York City

Traffic fatalities decreased in the early years of Vision Zero, then rose

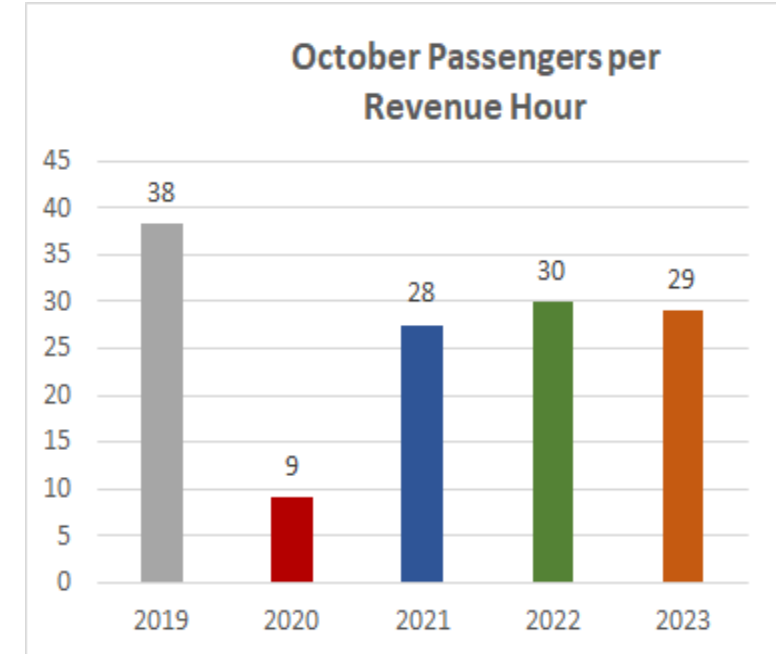
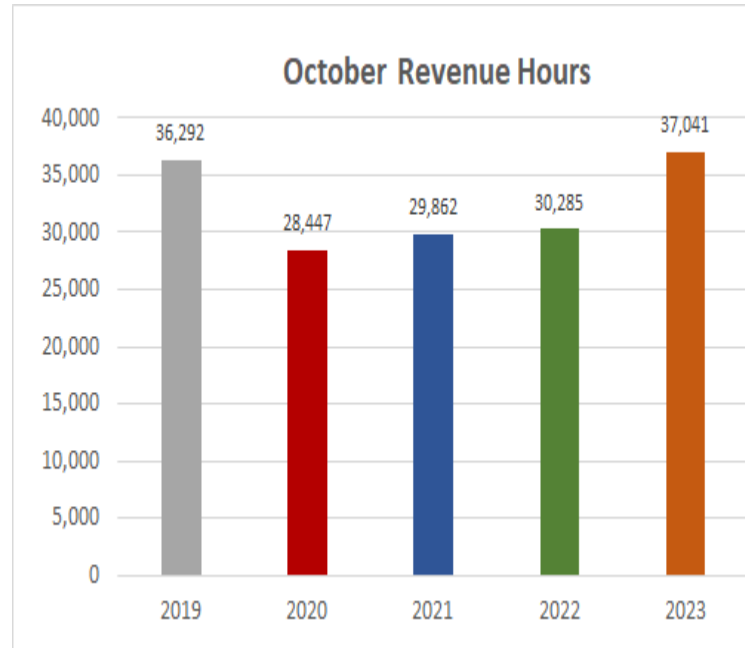
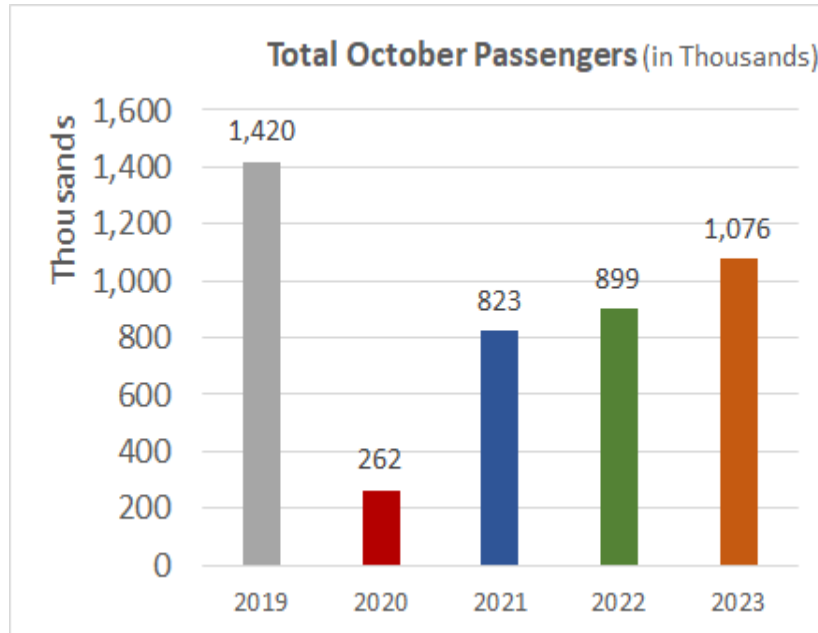
New York City's leaders failed to scale successes and meet the needs of a changing city, resulting in a rise in fatalities over recent years.



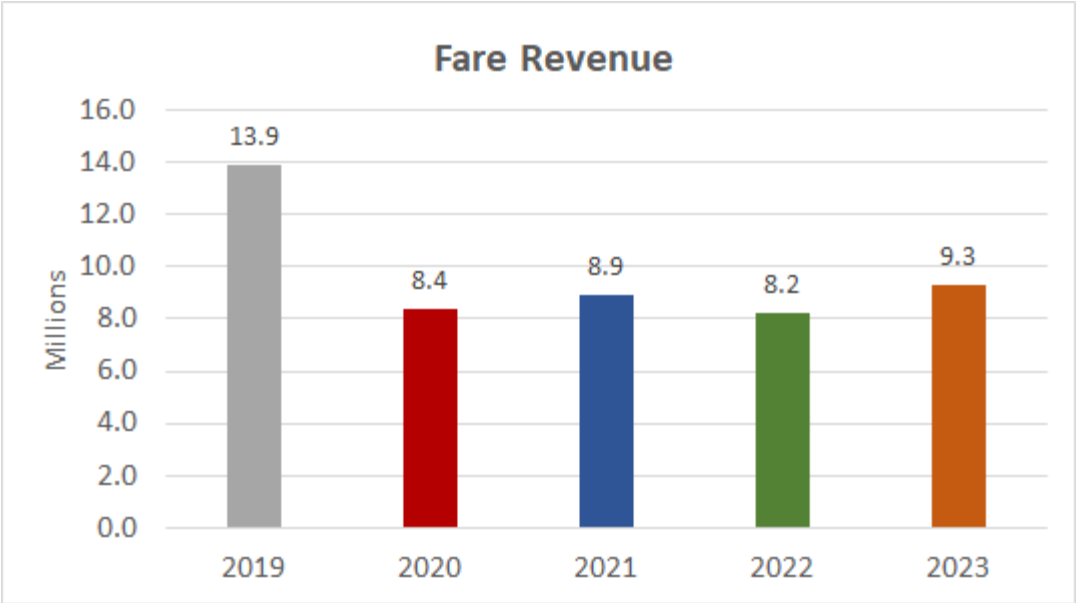
Five Lessons for the 10-Year Anniversary of Vision Zero in New York City

A Look at the Successes and Shortcomings of America's First Vision Zero Program

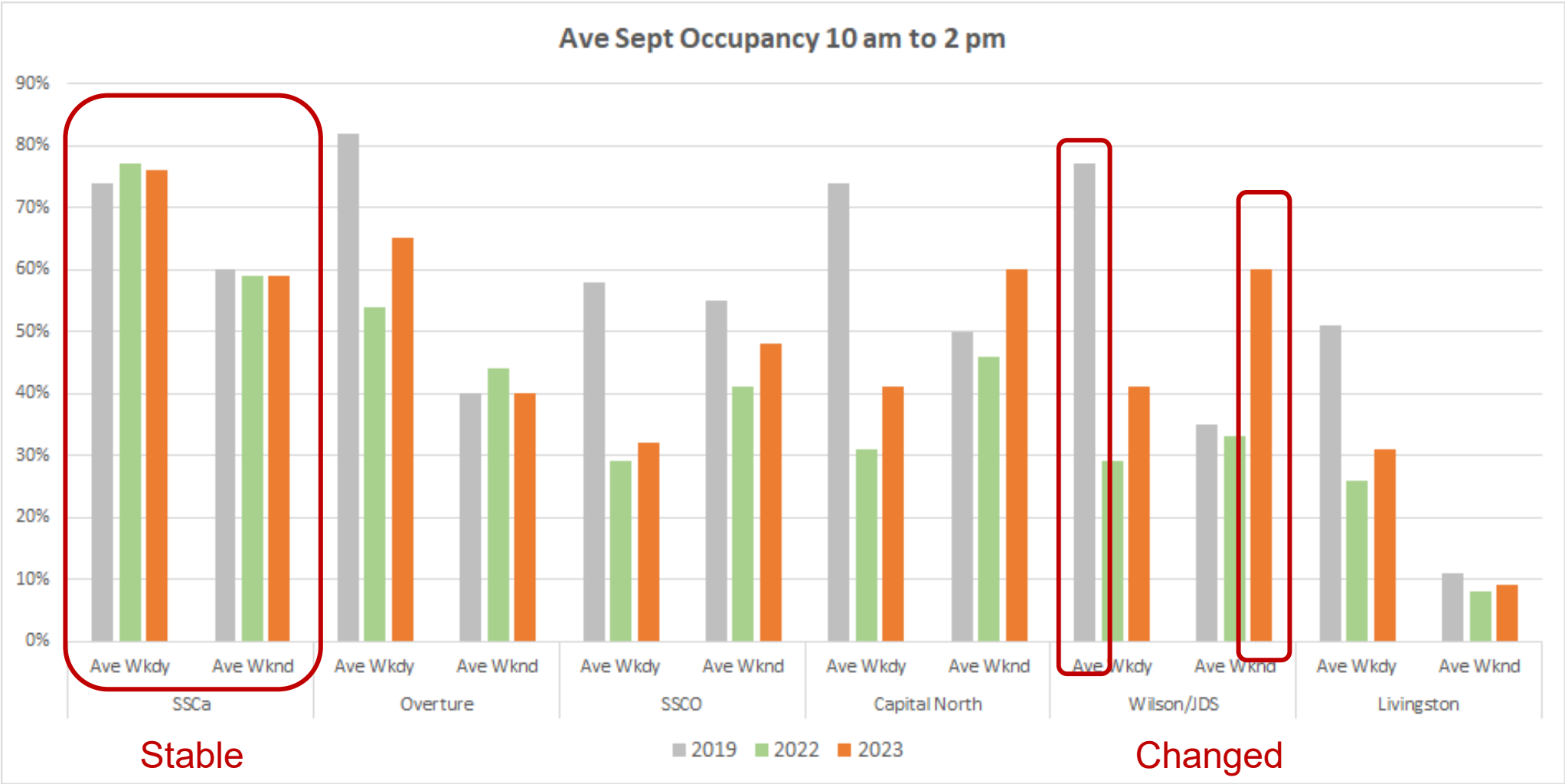
Metro Transit



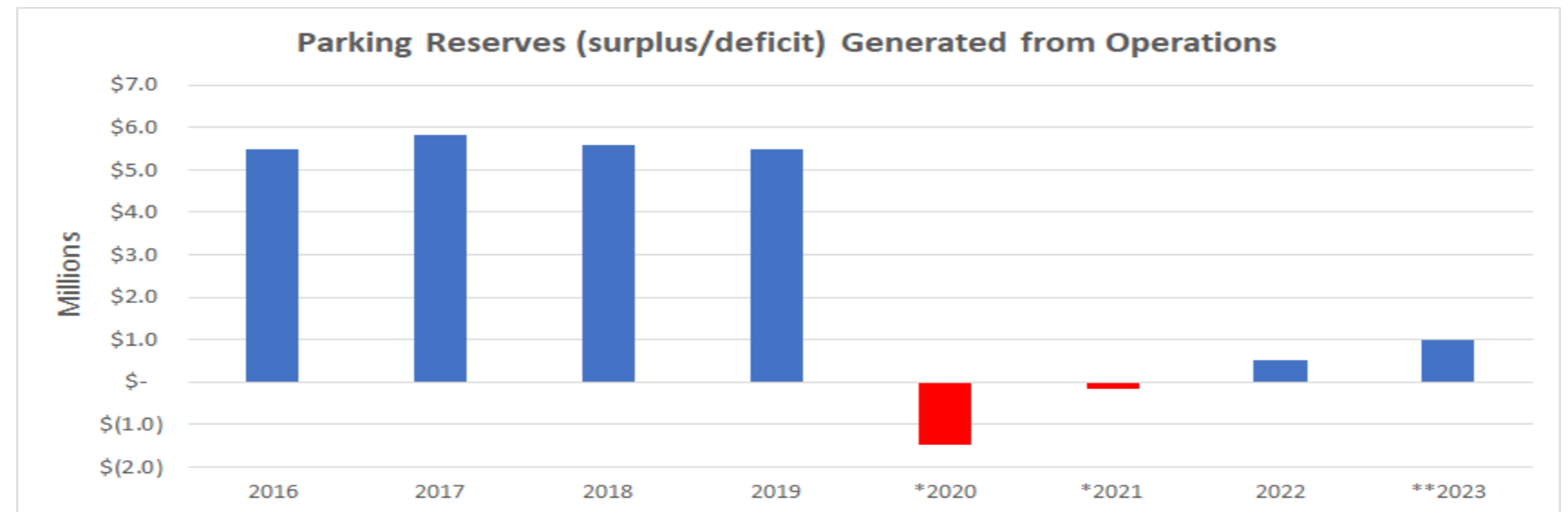
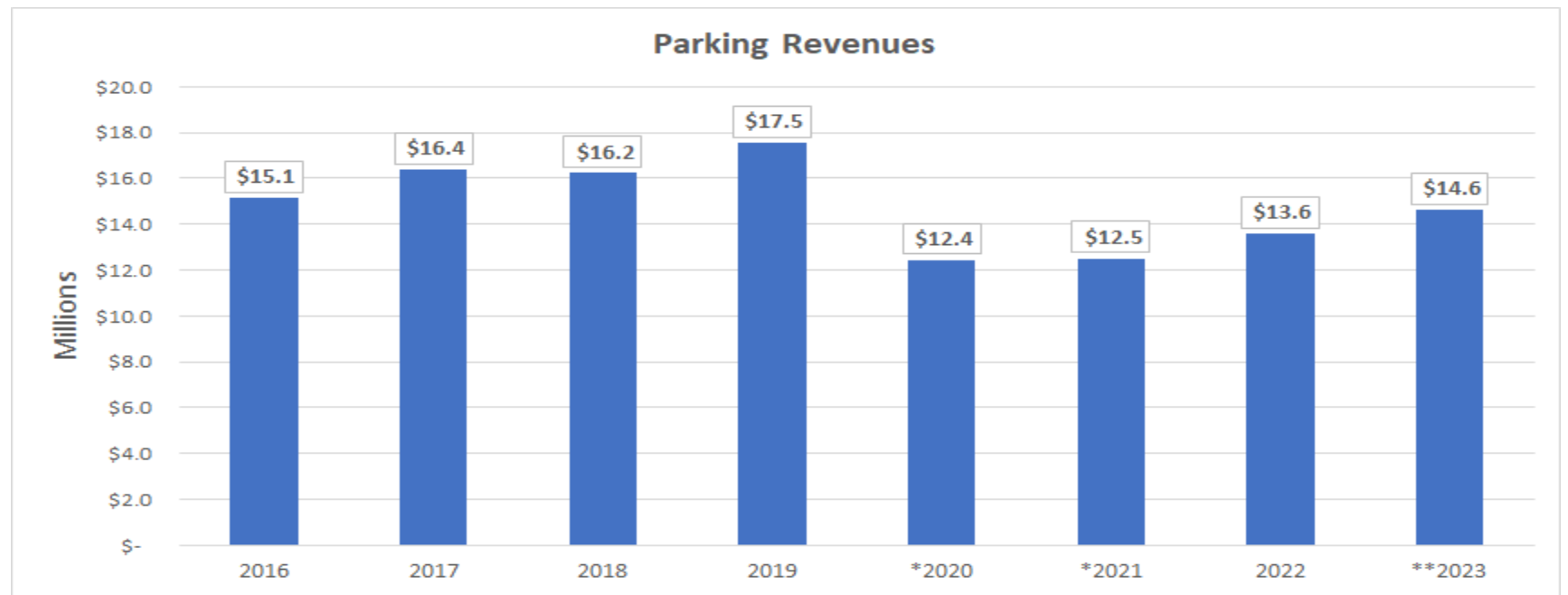
Metro Transit



Parking



Parking



Parking



Federal Funding

Project Title	Federal Contribution
Metro Bus Satellite Facility	
Purchase Hanson Road	7,000,000
Remodel Hanson Road	12,500,000
Roof and Solar Hanson Road	9,447,200
Transit Technology System	13,983,291
Equipment and Facility Repairs	692,500
Electric Buses (16) and Charging Equipment	24,978,840
East Washington Bus Roof and Solar Equipment	8,536,800
East Washington Bus Facility Phase 3b	6,400,000
Safe Streets for All 2023	6,267,668
Miscellaneous Traffic Engineering Grants	4,513,000
Reconnecting Communities Planning Grant 2024	1,000,000
NS BRT 2023	670,000
E-W BRT 2022	143,413,105
E-W BRT 2020	1,272,523
N-S BRT 2024 FTA Recommendation*	118,100,000
Total Federal for Transportation Projects	358,774,927

*Needs congressional appropriation

Transportation Efforts



Figure 18 Eau Claire BRT Station Early Stages

Implementation of E-W BRT
(CIG Signing)

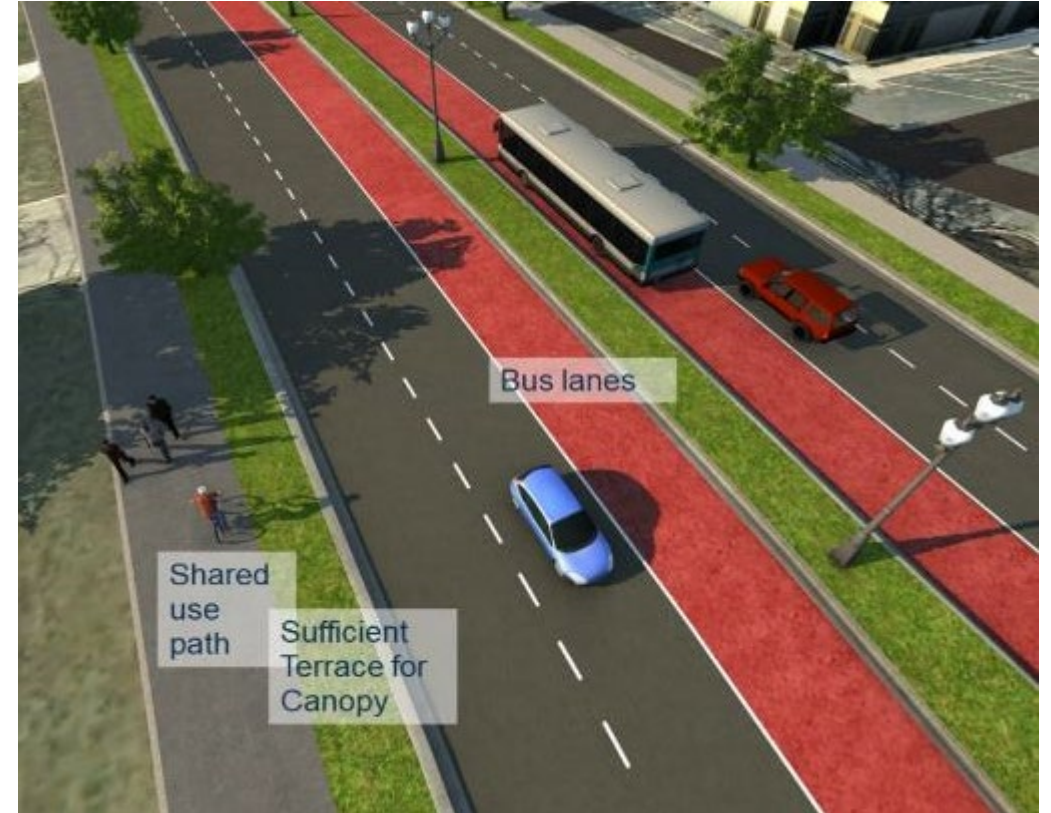


Figure 19 N-S BRT Park Street Concepts

N-S BRT LPA
(CIG Funding Recommendation)

Transportation Efforts

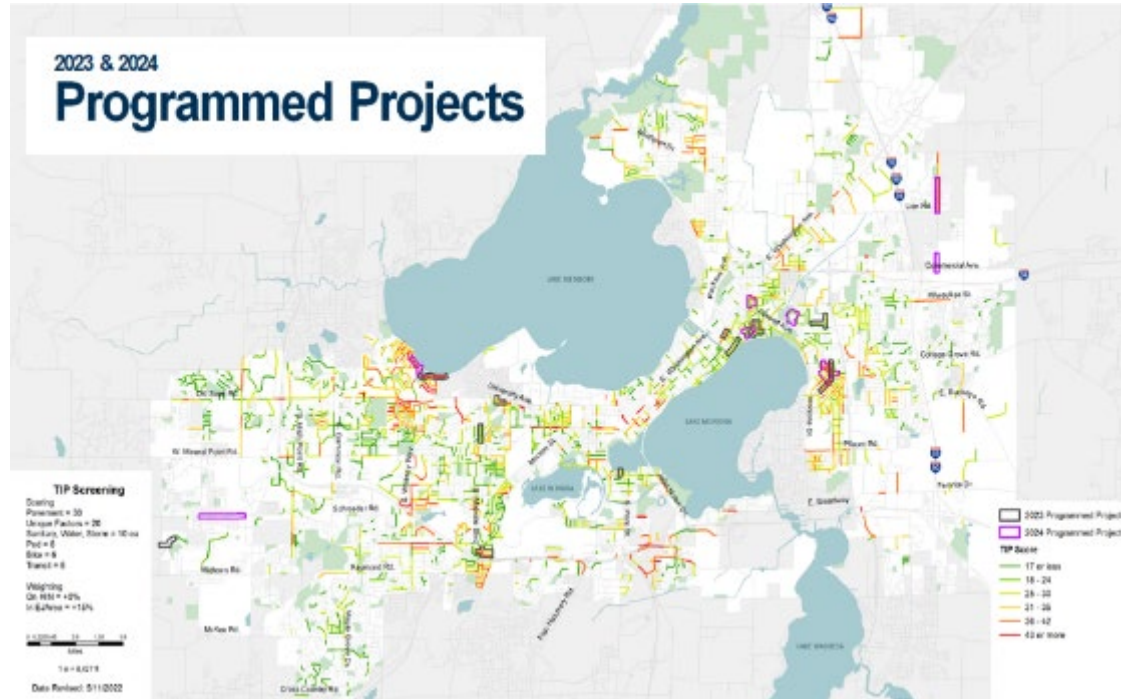


Figure 20 Programing Projects Using New Prioritization Tool

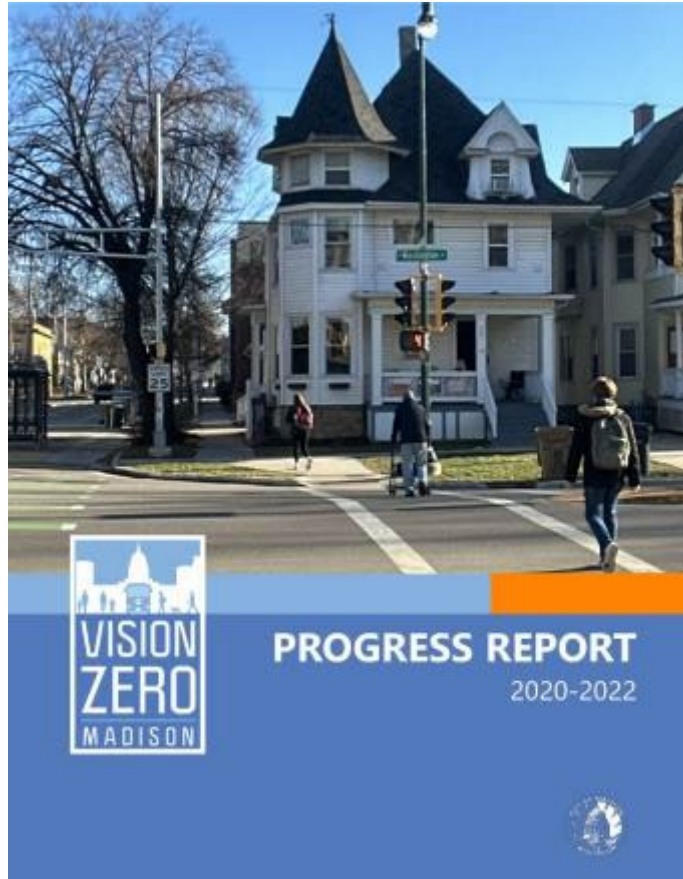
Assistance with Transportation Improvement Program Prioritization



Figure 22 Amtrak Station Location Alternatives

Amtrak Station Location Study

Traffic Engineering Efforts



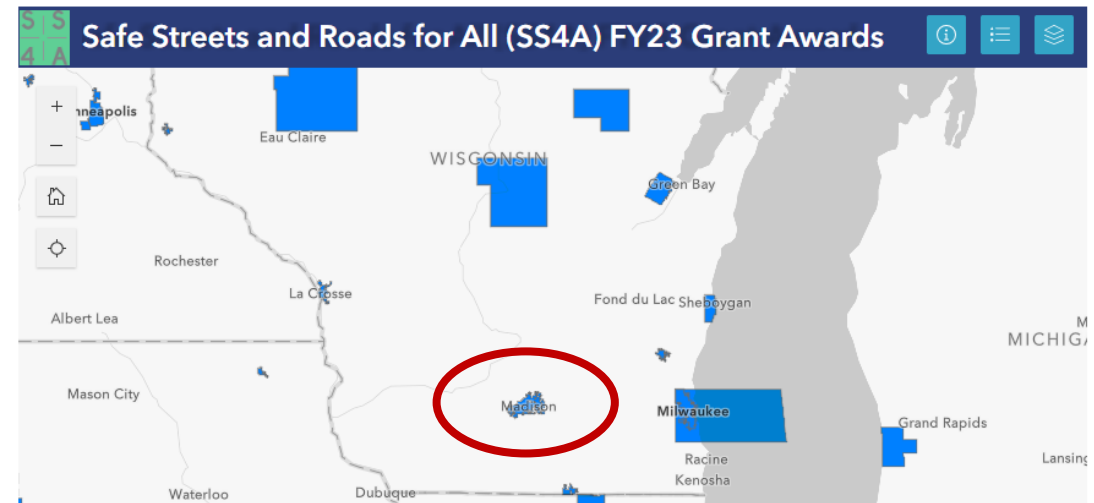
Vision Zero Progress Report

2023 SS4A Awards

On Dec. 13, 2023, the [U.S. Department of Transportation announced](#) 385 fiscal year (FY) 2023 Safe Streets and Roads for All (SS4A) grant awards totaling \$813 million to local communities.

These awards include 48 Implementation Grants focused on safety projects and strategies and 337 grants for planning and demonstration activities, shown in the map below. This is the second of two award announcements for FY 2023.

On October 27, 2023, the Department announced the first round of FY 2023 awards to 235 communities totaling \$82 million. Combined, 620 communities received \$895 million as part of the FY 2023 funding round.



Capturing SS4A Grant

Traffic Engineering Efforts

Street/Area	Location	Facility Type	Mileage
W Wilson St	Bassett St to Carroll St	2-way Cycletrack/PBL	0.4
Broom St	JND to W Wilson	Path	0.05
Broom St	W Wilson to W Main St	2-way PBL	0.1
Bassett St	W Main St to W Wilson St	2-way PBL	0.1
Hammersley Rd	Brookwood to Gilbert	Path on north side	0.6
Davies St	Buckeye to just south of Maher	Path on west side	0.3
Olbrich Park	Lakeland to Atwood	Path	0.17
Atwood Ave	Oakridge to Walter	Path w/separated bike/ped	0.4
Atwood Ave	Walter to city border (south side)		0.2
Atwood Ave	Walter to Cottage Grove Rd (north side)	Path	0.5
Walter St	Atwood to Capital City Path	Path	0.2
S Pinckney St	Wilson to Doty	bike lanes (center)	0.05
West Towne Path	Commerce Dr to S Junction Rd	Path	0.25
Delaware Blvd	Wheeler Rd to N Sherman	Bike lanes	0.9
Wheeler Rd	Delaware Blvd to N Sherman	Bike lanes	0.6
W Beltline Frontage Rd	Beltline ramp to Coho	Bike lanes	0.2
Felland Rd	Tranquility Trl to Autumn Lake Pkwy	Path	0.3
Pleasant View Road	Timber Wolf Trl to Blackhawk Rd	Path	0.4
E Washington Ave	Webster to Franklin	Bike lane	0.2
Total			5.92



Figure 24 Atwood Ave Cycletrack (left) and Wilson St Cycletrack (right)

Partnership with Engineering Adding Significant Bike and Ped Facilities

Metro Transit Efforts



Figure 25 Erection of a Mineral Pt Rd BRT shelter. Photo courtesy of Wisconsin State Journal

<https://bloximages.chicago2.vip.townnews.com/madison.com/content/tncms/assets/v3/editorial/b/0e/b0e02421-519e-5db5-94e9-71d74d5ec467/65556658cbcd0.image.jpg?resize=1920%2C1080>

Implementation of E-W BRT (CIG Signing)



Figure 26 Transit Network Redesign

Transit Network Redesign

Metro Transit Efforts



Figure 27 New Battery Electric Articulated BRT Buses

**Receiving, Training, New
Battery Electric Articulated
Buses**



Figure 28 Groundbreaking at Metro's Hanson Road Facility

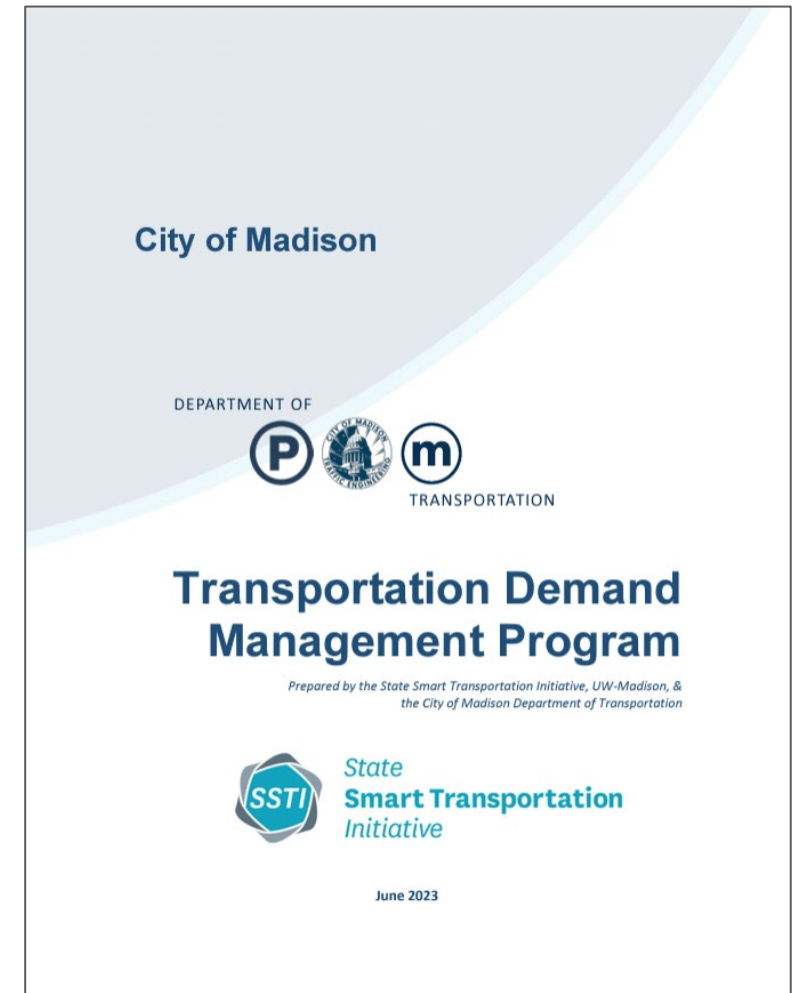
Ground-Breaking on Hansen Rd Facility

Parking Efforts



Figure 31 PEO Relocation to the Former Town of Madison Bldg

Relocation of PEOs



Implementation of TDM Program

Parking Efforts



Figure 29 Demolition of State St Campus Garage Began in January 2024

State Street Campus Garage



Figure 30 Rendering of Intercity Bus Terminal

