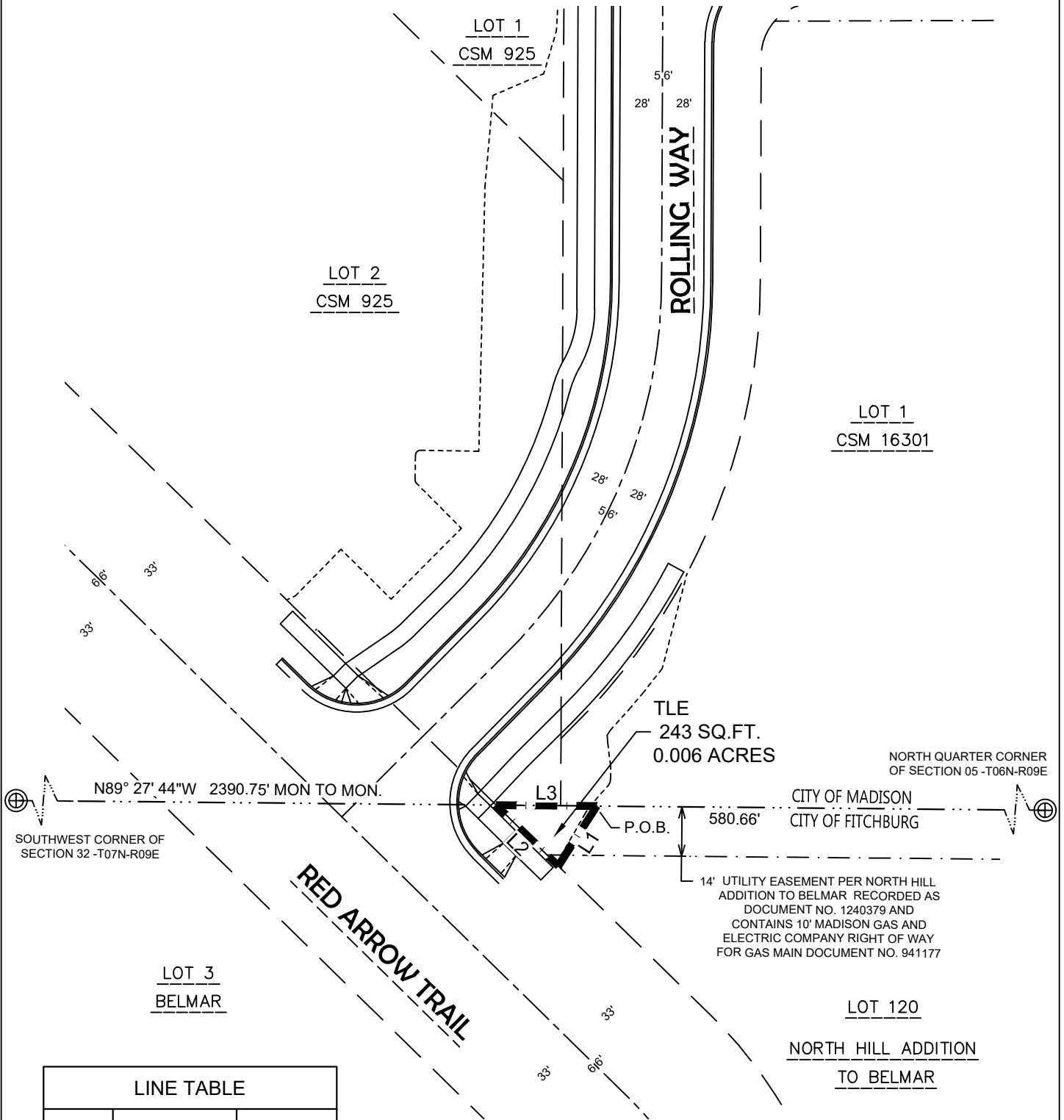


EXHIBIT

PART OF LOT 120 OF NORTH HILL ADDITION TO BELMAR RECORDED ON MAY 9TH, 1969 IN VOLUME 35 OF PLATS ON PAGES 17 AND 18, AS DOCUMENT NO. 1240379, BEING A PART OF THE NORTHEAST QUARTER OF THE NORTHWEST QUARTER OF SECTION 5, TOWN 06 NORTH, RANGE 09 EAST, LOCATED IN THE CITY OF FITCHBURG, DANE COUNTY, WISCONSIN



LINE TABLE

LINE #	BEARING	DISTANCE
L1	S32° 39' 21"W	20.16'
L2	N45° 35' 40"W	24.64'
L3	S89° 27' 44"E	28.49'

