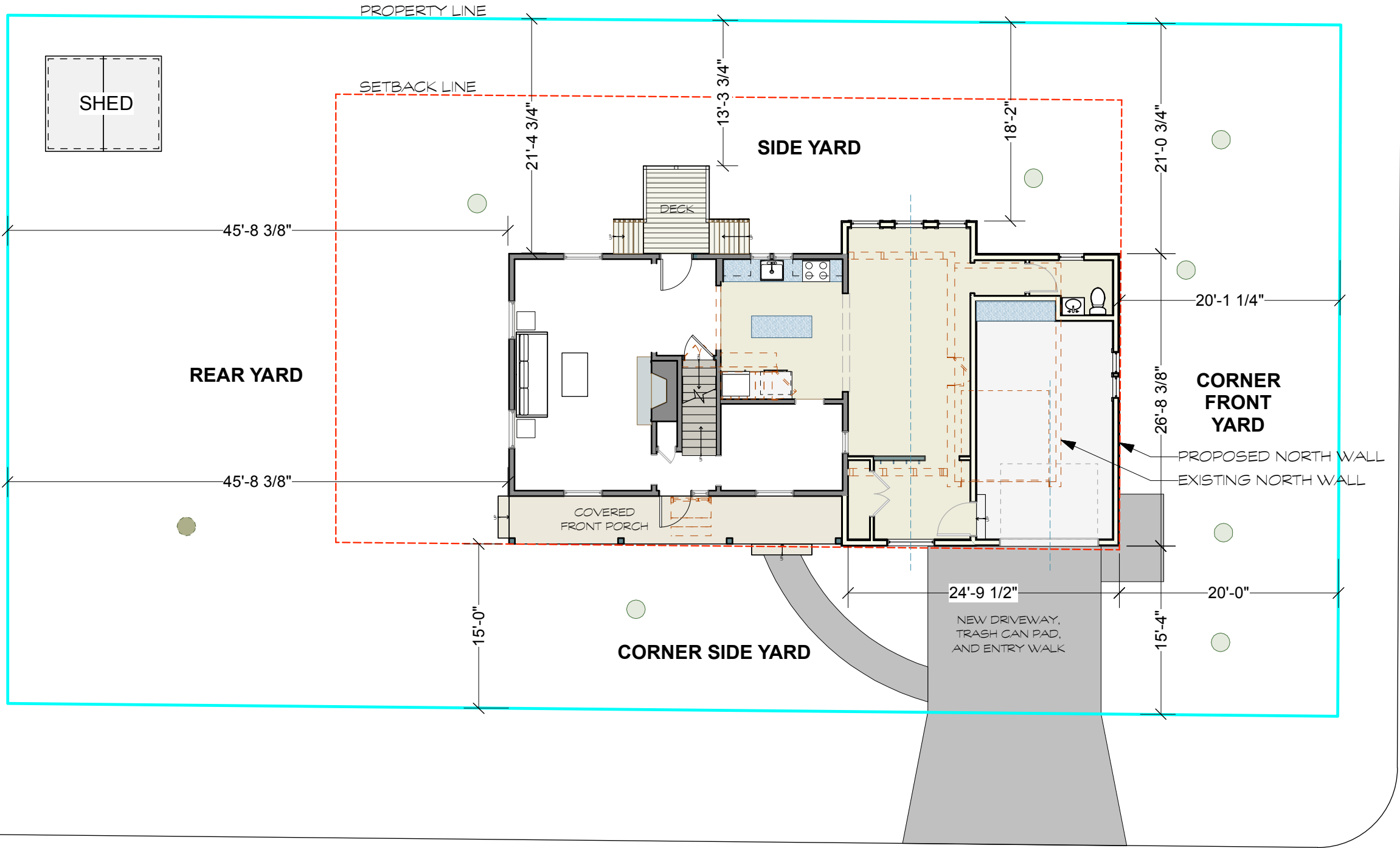


1 EXISTING SITE PLAN
Scale: 3/32" = 1'-0"

Version/Date: DEMO. PERMIT 12/29/23 Printed by: LB	COURTENAY 204 WEST SUNSET COURT MADISON, WI 53705	ASSOCIATED HOUSEWRIGHTS 1217 Calmen St, Madison, WI, 53713 www.housewrights.com (608) 238-7519		Page Size: 11 x 17 Scale: 3/32"=1'-0" Page/Drawing 1 of 2
---	--	--	--	--



2 PROPOSED SITE PLAN
Scale: 3/32" = 1'-0"

Version/Date: DEMO. PERMIT 12/29/23 Printed by: LB	
COURTENAY 204 WEST SUNSET COURT MADISON, WI 53705	
ASSOCIATED HOUSEWRIGHTS 1217 Calman St. Madison, WI. 53713 www.housewrights.com (608) 238-7519	
Page Size: 3/32"=1'-0"	11 x 17
Page/Drawing 2 of 2	