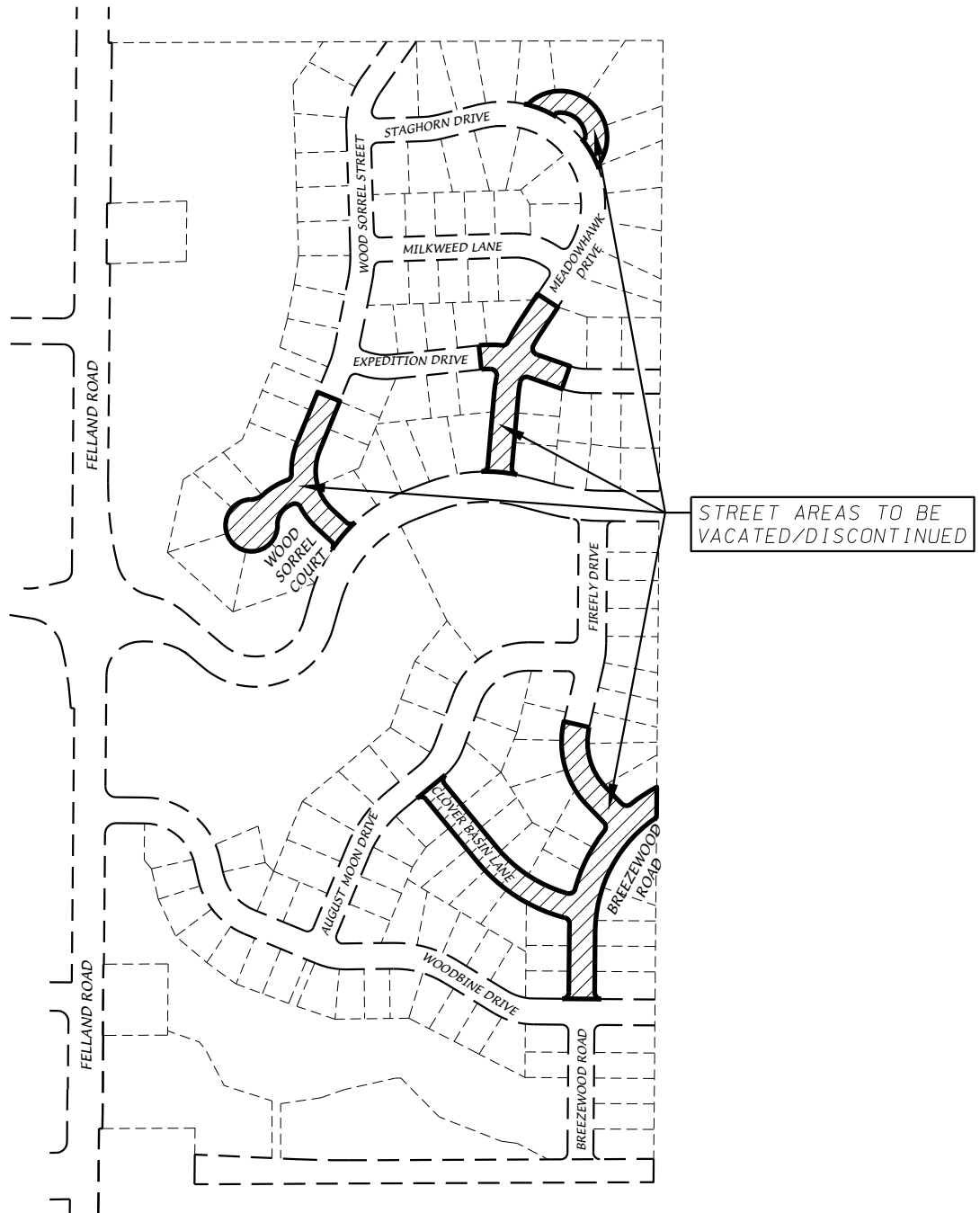


EXHIBIT "A"
PUBLIC RIGHT-OF-WAYS TO BE VACATED AND DISCONTINUED
VILLAGE AT AUTUMN LAKE REPLAT




STREET AREAS TO BE
 VACATED/DISCONTINUED



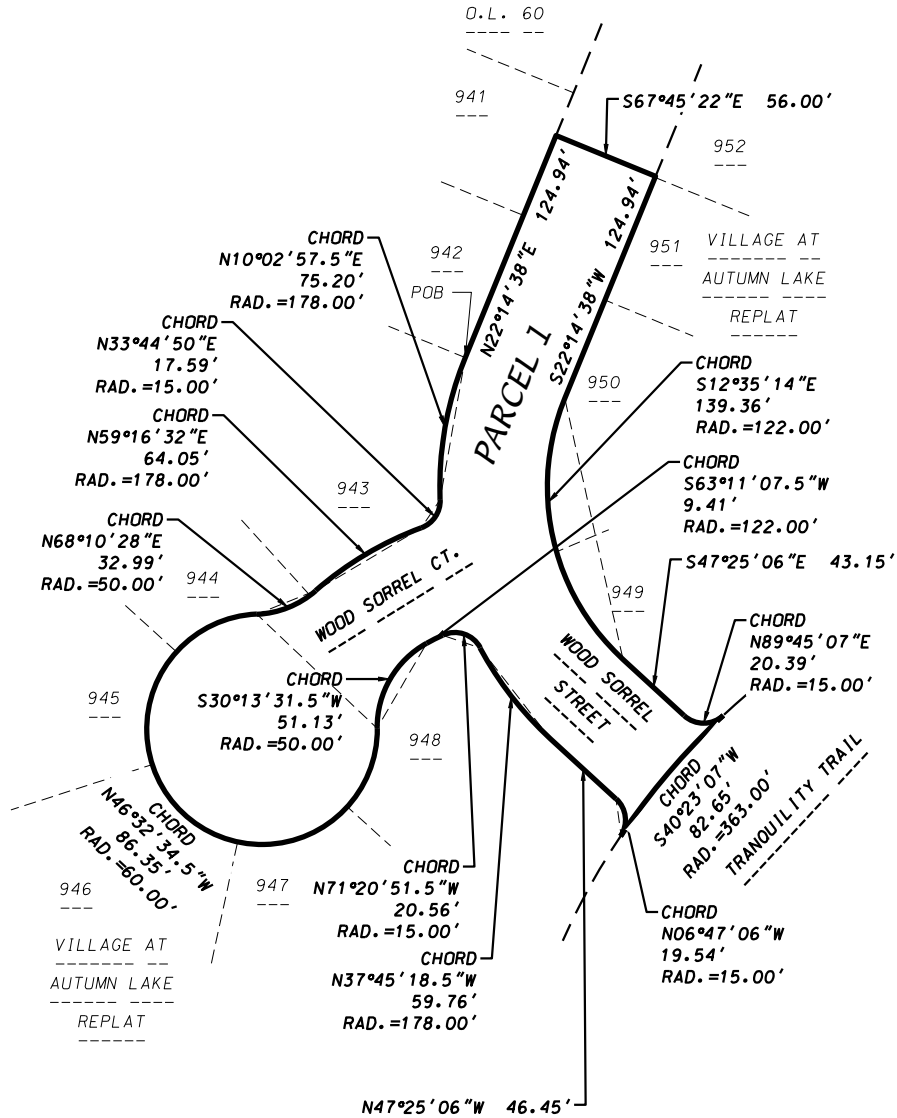
D'ONOFRIO KOTTKE AND ASSOCIATES, INC.
 7530 Westward Way, Madison, WI 53717
 Phone: 608.833.7530 • Fax: 608.833.1089
YOUR NATURAL RESOURCE FOR LAND DEVELOPMENT



0 400

 Scale 1" = 400'

SHEET 1 OF 5
 DATE: 1-3-24
 F.N.: 23-07-111

EXHIBIT "A"
PUBLIC RIGHT-OF-WAYS TO BE VACATED AND DISCONTINUED
VILLAGE AT AUTUMN LAKE REPLAT



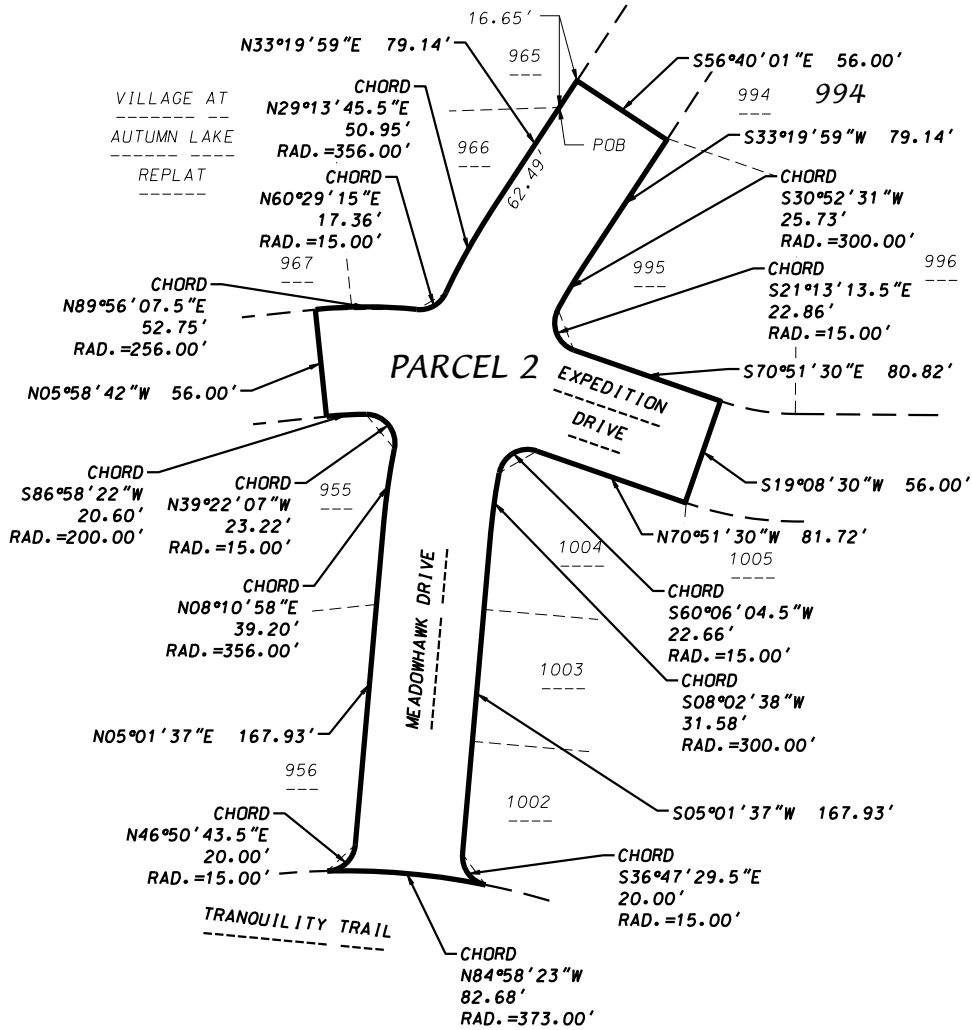
D'ONOFRIO KOTTKE AND ASSOCIATES, INC.
 7530 Westward Way, Madison, WI 53717
 Phone: 608.833.7530 • Fax: 608.833.1089
 YOUR NATURAL RESOURCE FOR LAND DEVELOPMENT



0 100
 Scale 1" = 100'

SHEET 2 OF 5
 DATE: 1-3-24
 F.N.: 23-07-111

EXHIBIT "A"
PUBLIC RIGHT-OF-WAYS TO BE VACATED AND DISCONTINUED
VILLAGE AT AUTUMN LAKE REPLAT



D'ONOFRIO KOTTKE AND ASSOCIATES, INC.

7530 Westward Way, Madison, WI 53717
 Phone: 608.833.7530 • Fax: 608.833.1089
 YOUR NATURAL RESOURCE FOR LAND DEVELOPMENT



0 100
 Scale 1" = 100'

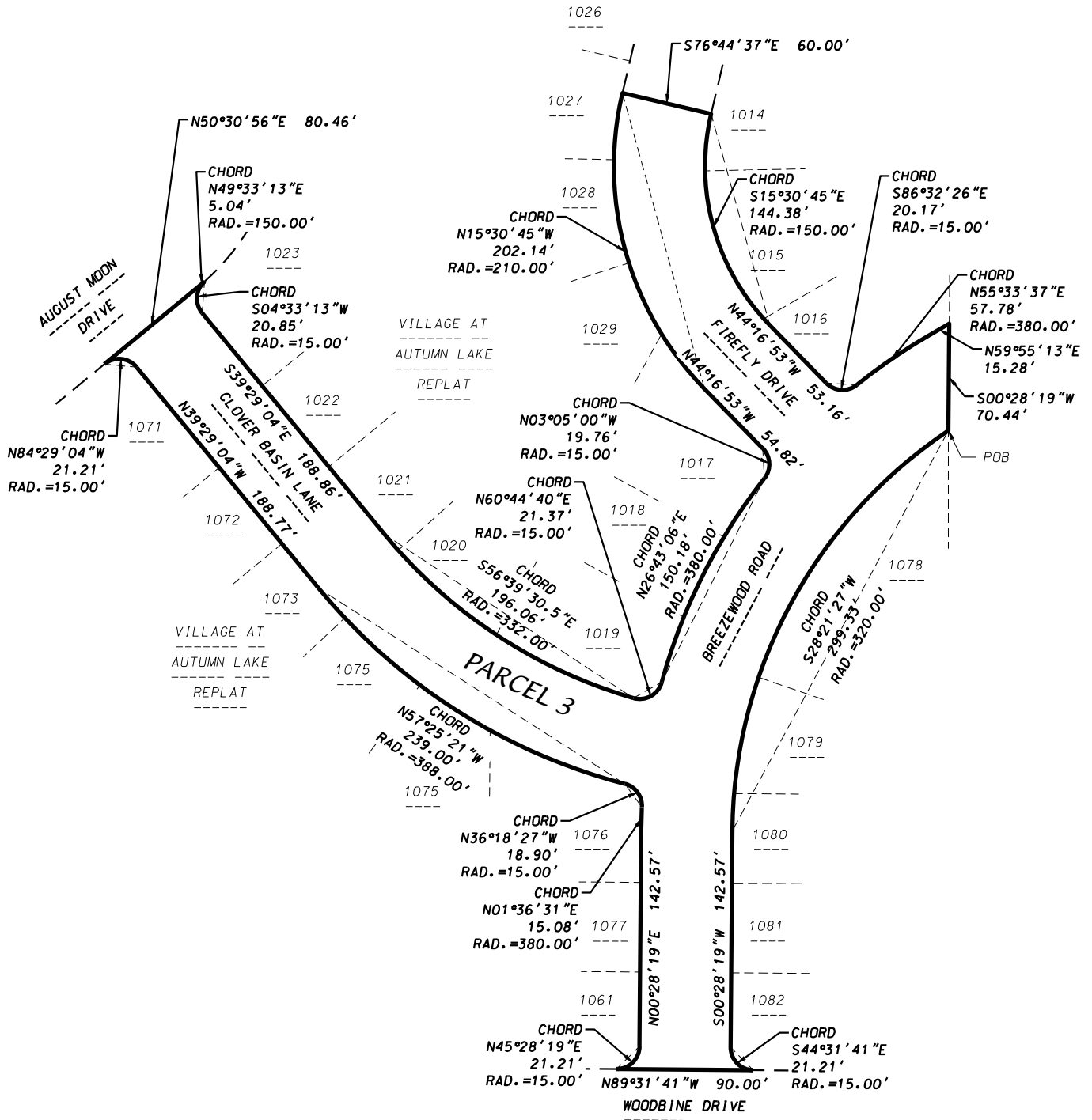
SHEET 3 OF 5

DATE: 1-3-24

F.N.: 23-07-111

EXHIBIT "A"

PUBLIC RIGHT-OF-WAYS TO BE VACATED AND DISCONTINUED VILLAGE AT AUTUMN LAKE REPLAT



D'ONOFRIO KOTTKE AND ASSOCIATES, INC.

7530 Westward Way, Madison, WI 53717
 Phone: 608.833.7530 • Fax: 608.833.1089
 YOUR NATURAL RESOURCE FOR LAND DEVELOPMENT

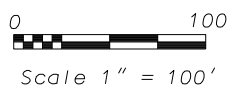
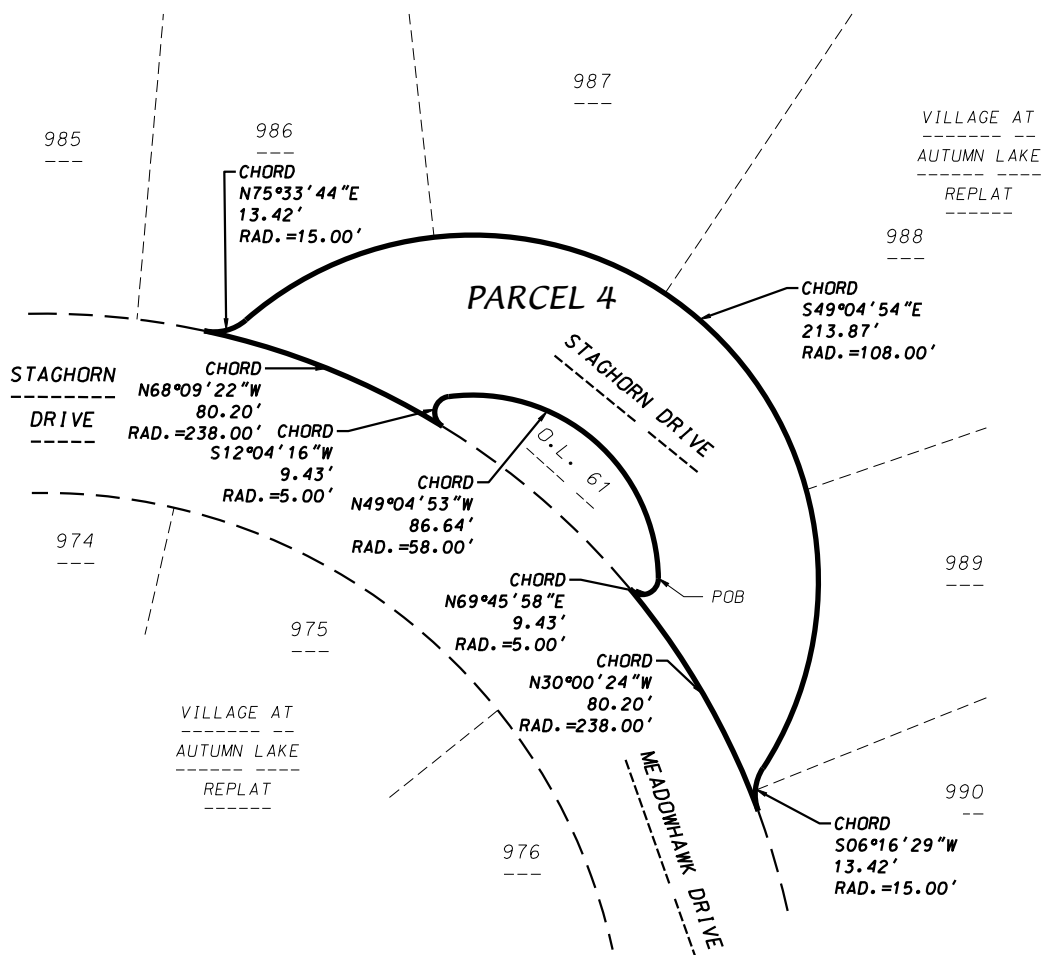


EXHIBIT "A"
PUBLIC RIGHT-OF-WAYS TO BE VACATED AND DISCONTINUED
VILLAGE AT AUTUMN LAKE REPLAT



D'ONOFRIO KOTTKE AND ASSOCIATES, INC.
 7530 Westward Way, Madison, WI 53717
 Phone: 608.833.7530 • Fax: 608.833.1089
 YOUR NATURAL RESOURCE FOR LAND DEVELOPMENT



0 60
 Scale 1" = 60'

SHEET 5 OF 5
 DATE: 1-3-24
 F.N.: 23-07-111