



# State Street Pedestrian Mall Experiment 2024

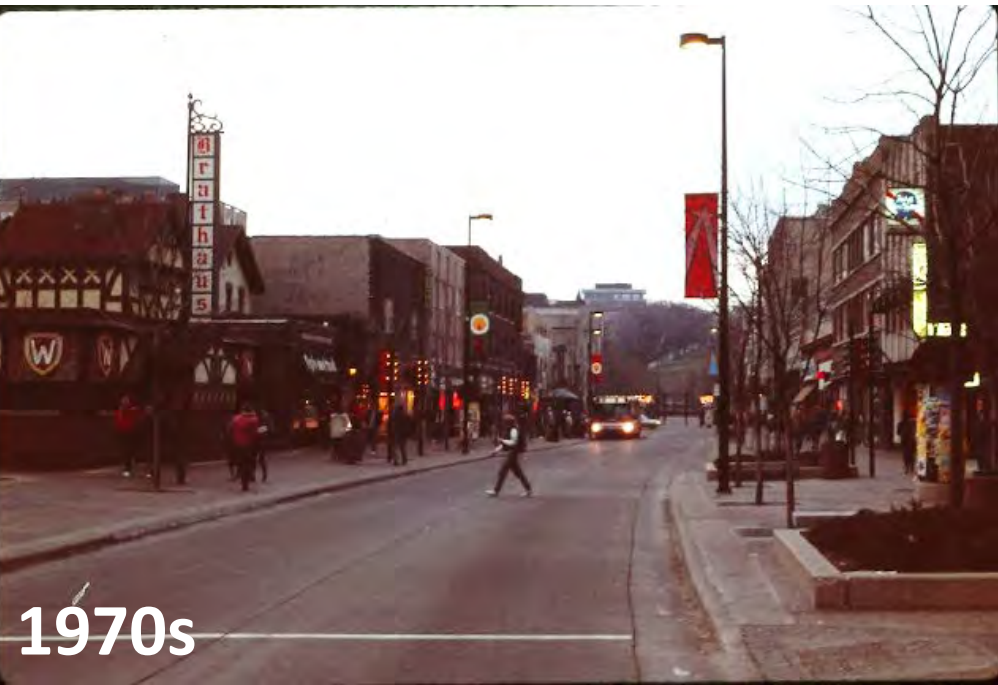
Transportation Commission

January 30, 2024

# State Street - History



1960s



1970s



2010s

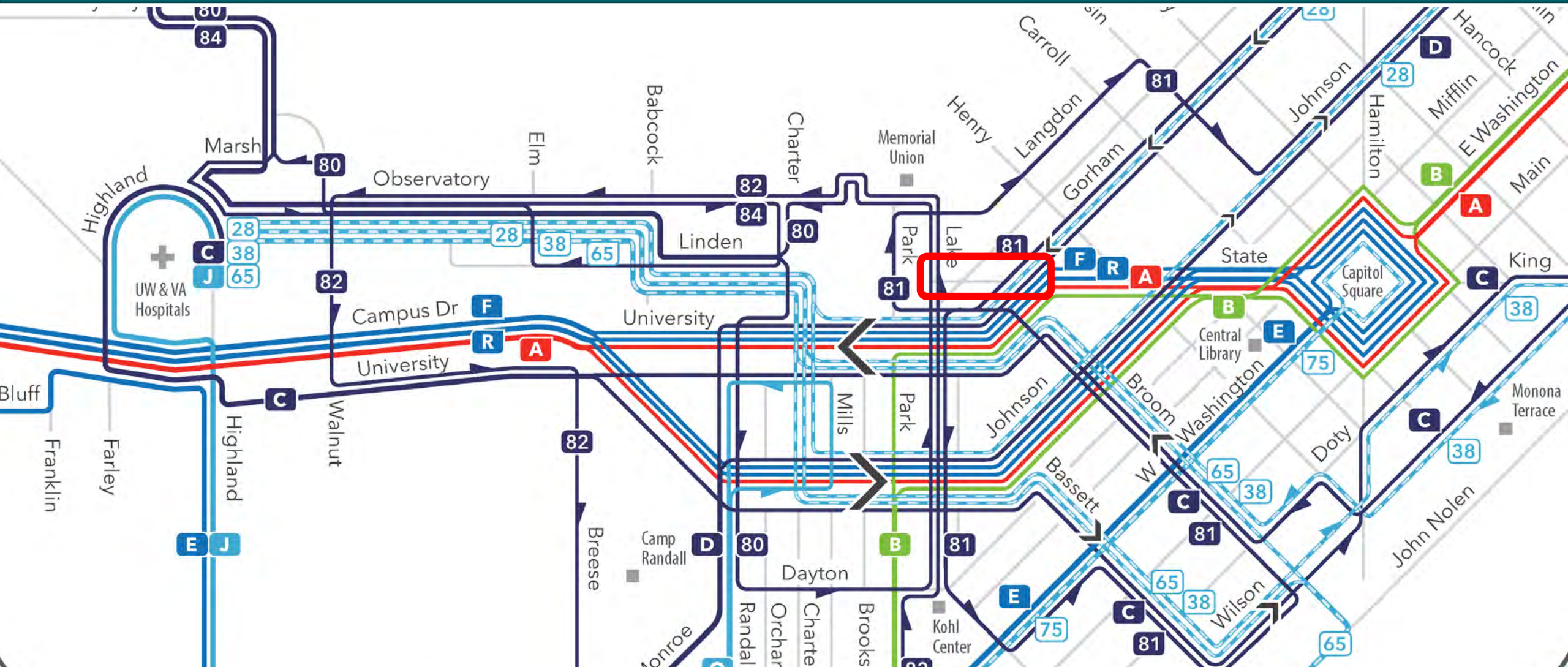


# 2020 Weekend Closure





# 2023 Metro Transit Network Redesign



# Downtown Coordinating Committee: Discussions

- Streets and Mall Concourse Maintenance
- Traffic Engineering
- Street Vending
- Police & Fire
- Disability Coordinator & Metro Paratransit
- Engineering
- BID and GSSBA
- Neighborhood associations
- State Street Survey

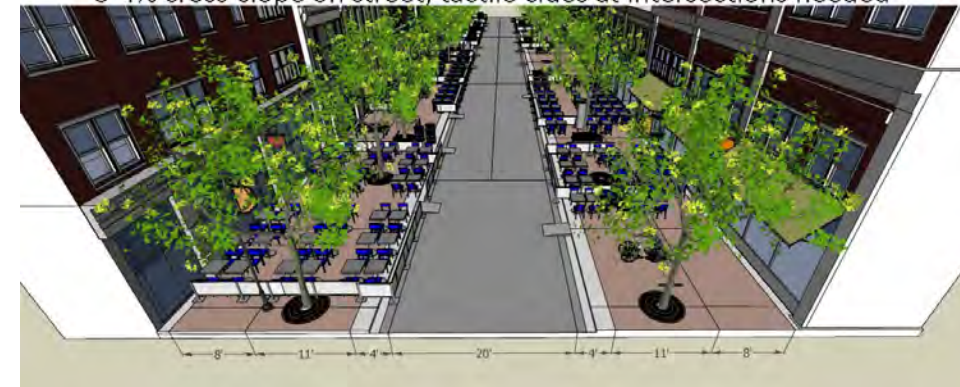
## Idea 1:

Extend cafes  $2' + 2' = 4'$  over curb/street, keep sidewalk  
This maintains tactile clues at intersections, 2% cross-slope on sidewalk,



## Idea 2: All pedestrians and bikes in street

Ramping of some type needed – difficult due to drainage,  
structural slab, tripping hazards  
3-4% cross-slope on street, tactile clues at intersections needed





# Key Lessons:

- No changes to street/curbs
- Emergency access and fire lanes critical
- City operations: refuse, snow, forestry, etc.





# Key Lessons:

- Bikes and pedestrians
- Accessibility





# Key Lessons:

- Business deliveries and building service
- Residents moving





# August 2023 – Resolution and Approval



**THE CAP TIMES**

[News](#) [Opinion](#) [Food & Drink](#) [Entertainment](#) [Sports](#) [Events](#) [Philanthropy](#) [About Us](#) [Madison.com](#) [WiscNews](#)



## State Street blocks to become pedestrian mall in 2024 experiment

By Allison Garfield

Sep 6, 2023



### Support Local Journalism

Become a Cap Times member today and enjoy great benefits.



[Join Today](#)

Questions? [View our FAQ page](#)



# Extent of State Street Experiment





# Existing Conditions







- Selfie station or photo frame**
- Incorporate hashtag to create social media presence



- Planters on inbound lanes**
- More attractive and than wooden barricades
  - No ongoing staff time requirement to control access
  - Allows cyclists normal access in direction

- Gateway placemaking elements**
- Creates visual distinction for pedestrian blocks
  - Illumination attracts attention to area



- Street Painting**
- Roots shown as sample
  - Adds interest and conveys change in character of street

- Benches at curb, facing into street**
- Encourages street be used as public space
  - Visual reminder to drive slowly
  - Stays out of fire lane

**Loading zones at cross street**





#FlocktoSTATE











# Furniture Placement

## Street end planters:

- Placement based on turning radius of fire truck and maintaining path for bikes on curb side
  - No planters on west end of 400 block
  - Midblock placement on 600 block - Hawthorne Ct access
- Street side of cross walk to discourage non-permitted inbound vehicles





# Furniture Placement

Street benches and planters

- Out of fire lane
- Spaced to work with fire apparatus and loading vehicles
- Concrete





# Pedestrian and Bike Facilities

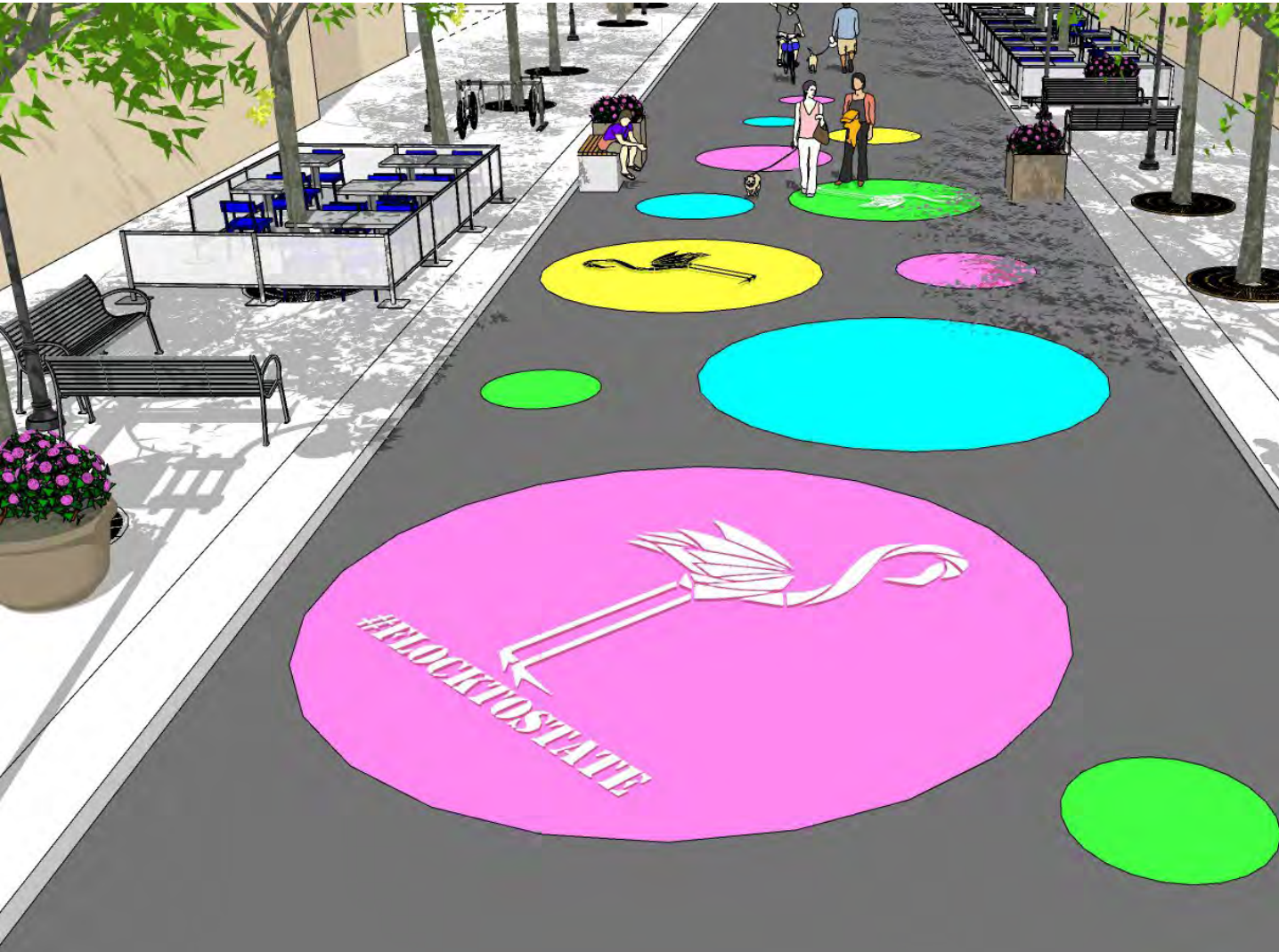
- Mainline sidewalk to remain
- Roadway as a mixed space
- No defined bike lanes
- Events will be similar to current processes

*Recommendations based on conversations with Ped/Bike and Disability Rights coordinators*





# Public Art Opportunities



Street painting with  
slip resistant paint



# Activation & Events

- City doesn't have capacity to create/manage events
- Rely on community partners, but space will be available





# Closure?

- Open to pedestrians and bikes!
- Closed to vehicles except:
  - Emergency vehicles
  - Paratransit
  - Parking lot on 500 block
- Loading zones on cross streets





# Closure Times

- Experiment timing: Early May through Late October
- Will have delivery windows
- Allowances for atypical situations
- Existing delivery prohibition: 11:30-1:30
- Exact hours TBD but greatest support for Weekends + Weekdays after 3 or 4 pm





# Measuring Outcomes

- Report results to Common Council
- Surveys:  
Business, resident and visitor
- Anonymized cell phone data







**#FLOCKtoSTATE**

Contact:

Dan McAuliffe

[dmcauliffe@cityofmadison.com](mailto:dmcauliffe@cityofmadison.com)

608-261-9676