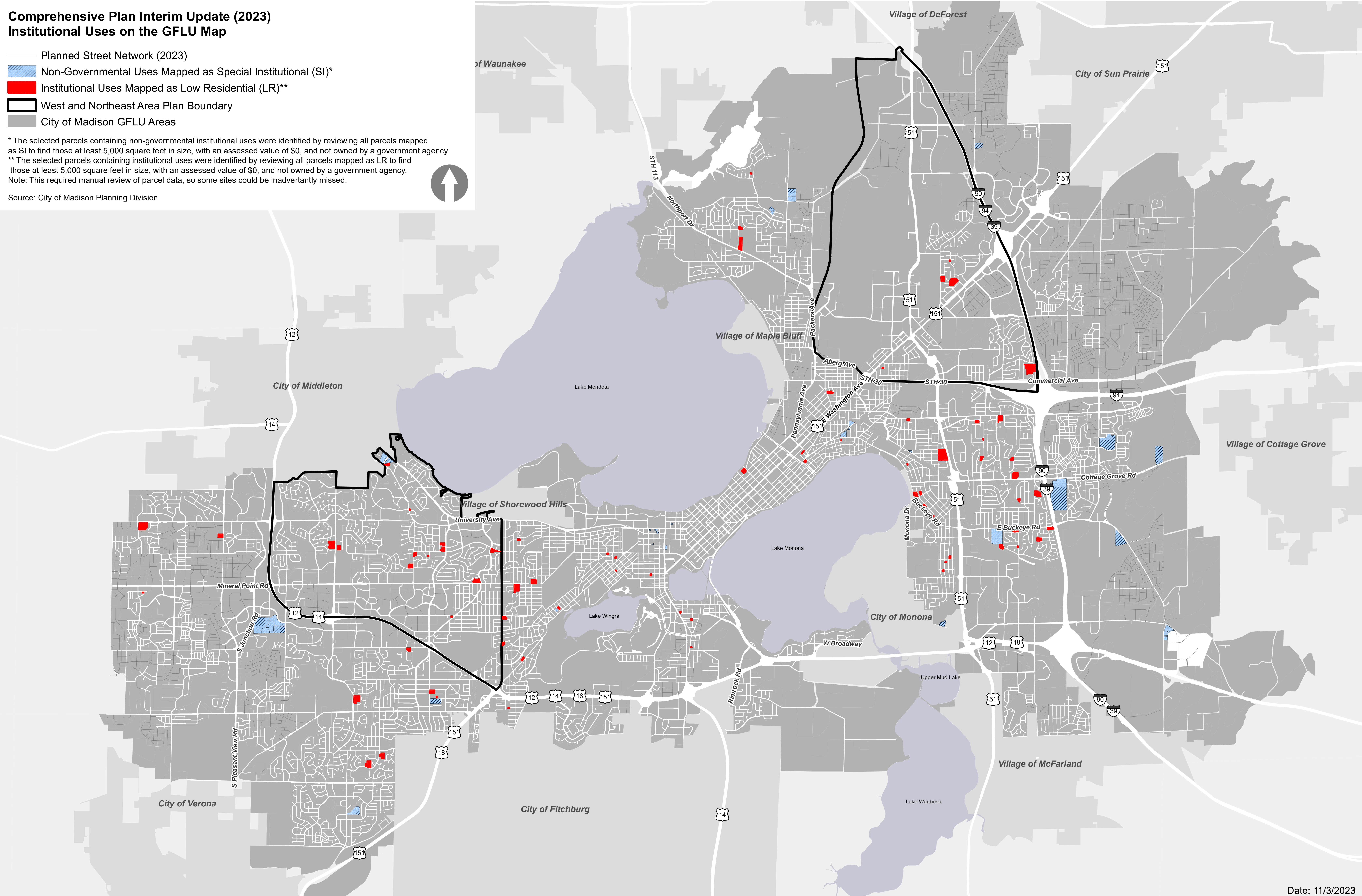


Comprehensive Plan Interim Update (2023)
Institutional Uses on the GFLU Map

- Planned Street Network (2023)
- Non-Governmental Uses Mapped as Special Institutional (SI)*
- Institutional Uses Mapped as Low Residential (LR)**
- West and Northeast Area Plan Boundary
- City of Madison GFLU Areas

* The selected parcels containing non-governmental institutional uses were identified by reviewing all parcels mapped as SI to find those at least 5,000 square feet in size, with an assessed value of \$0, and not owned by a government agency.
** The selected parcels containing institutional uses were identified by reviewing all parcels mapped as LR to find those at least 5,000 square feet in size, with an assessed value of \$0, and not owned by a government agency.
Note: This required manual review of parcel data, so some sites could be inadvertently missed.

Source: City of Madison Planning Division



Comprehensive Plan Interim Update (2023)
Institutional Uses on the GFLU Map

- Planned Street Network (2023)

Non-Governmental Uses Mapped as SI*

Institutional Uses Mapped as LR**

West and Northeast Area Plan Boundary
- Generalized Future Land Use

Low Residential (LR)

Low-Medium Residential (LMR)

Medium Residential (MR)

High Residential (HR)

Neighborhood Mixed Use (NMU)

Community Mixed Use (CMU)
- Regional Mixed Use (RMU)
- Downtown Mixed Use (DMU)
- Downtown Core (DC)
- General Commercial (GC)
- Employment (E)
- Industrial (I)
- Parks and Open Space (P)
- Special Institutional (SI)
- Airport (A)
- Neighborhood Planning Area (NPA)

* The selected parcels containing non-governmental institutional uses were identified by reviewing all parcels mapped as SI to find those at least 5,000 square feet in size, with an assessed value of \$0, and not owned by a government agency.

** The selected parcels containing institutional uses were identified by reviewing all parcels mapped as LR to find those at least 5,000 square feet in size, with an assessed value of \$0, and not owned by a government agency.

Note: This required manual review of parcel data, so some sites could be inadvertently missed.

Source: City of Madison Planning Division

