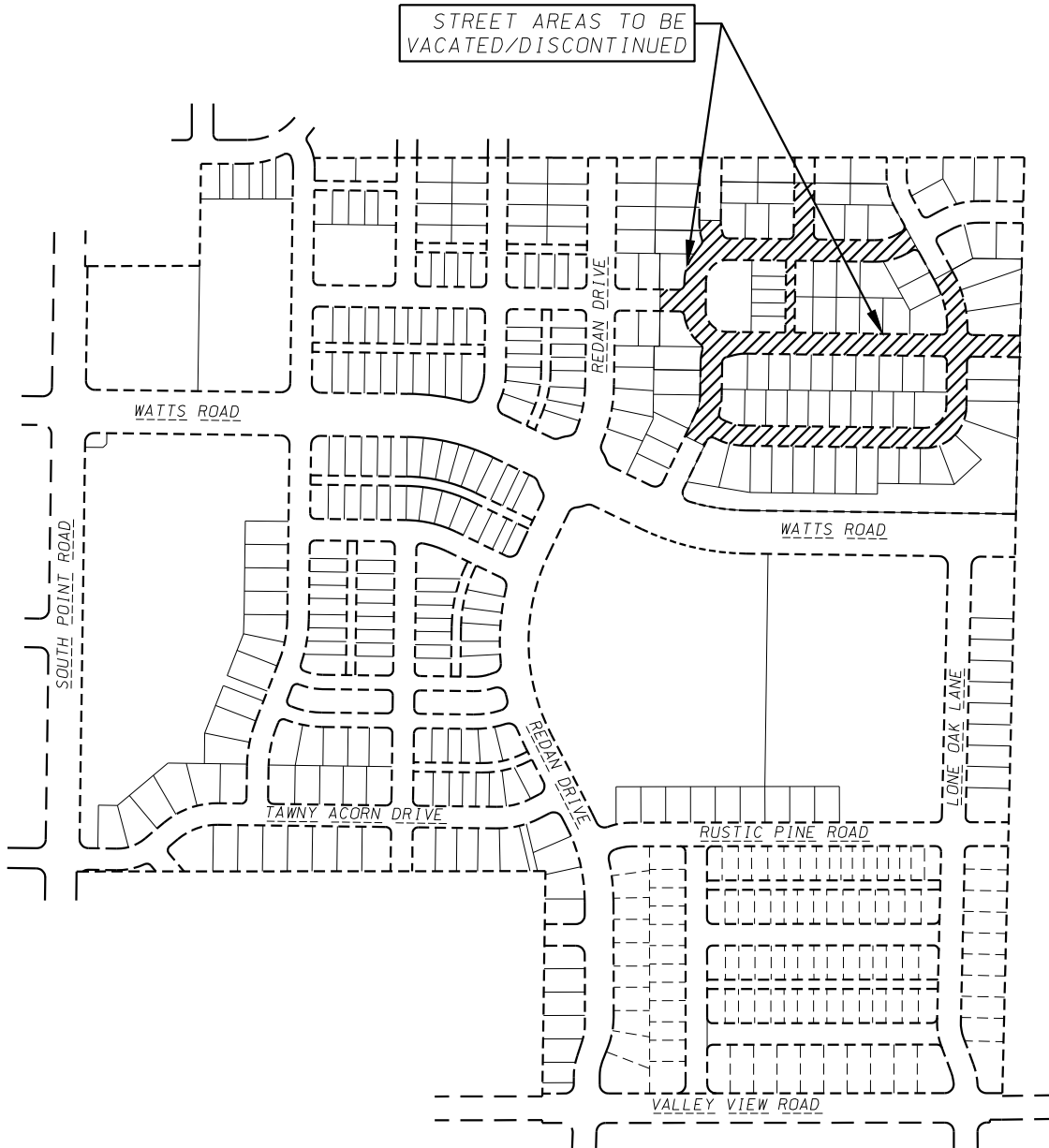


EXHIBIT "A"
PUBLIC RIGHT-OF-WAYS TO BE VACATED AND DISCONTINUED
ACACIA RIDGE



D'ONOFRIO KOTTKE AND ASSOCIATES, INC.
7530 Westward Way, Madison, WI 53717
Phone: 608.833.7530 • Fax: 608.833.1089
YOUR NATURAL RESOURCE FOR LAND DEVELOPMENT



0 500
Scale 1" = 500'

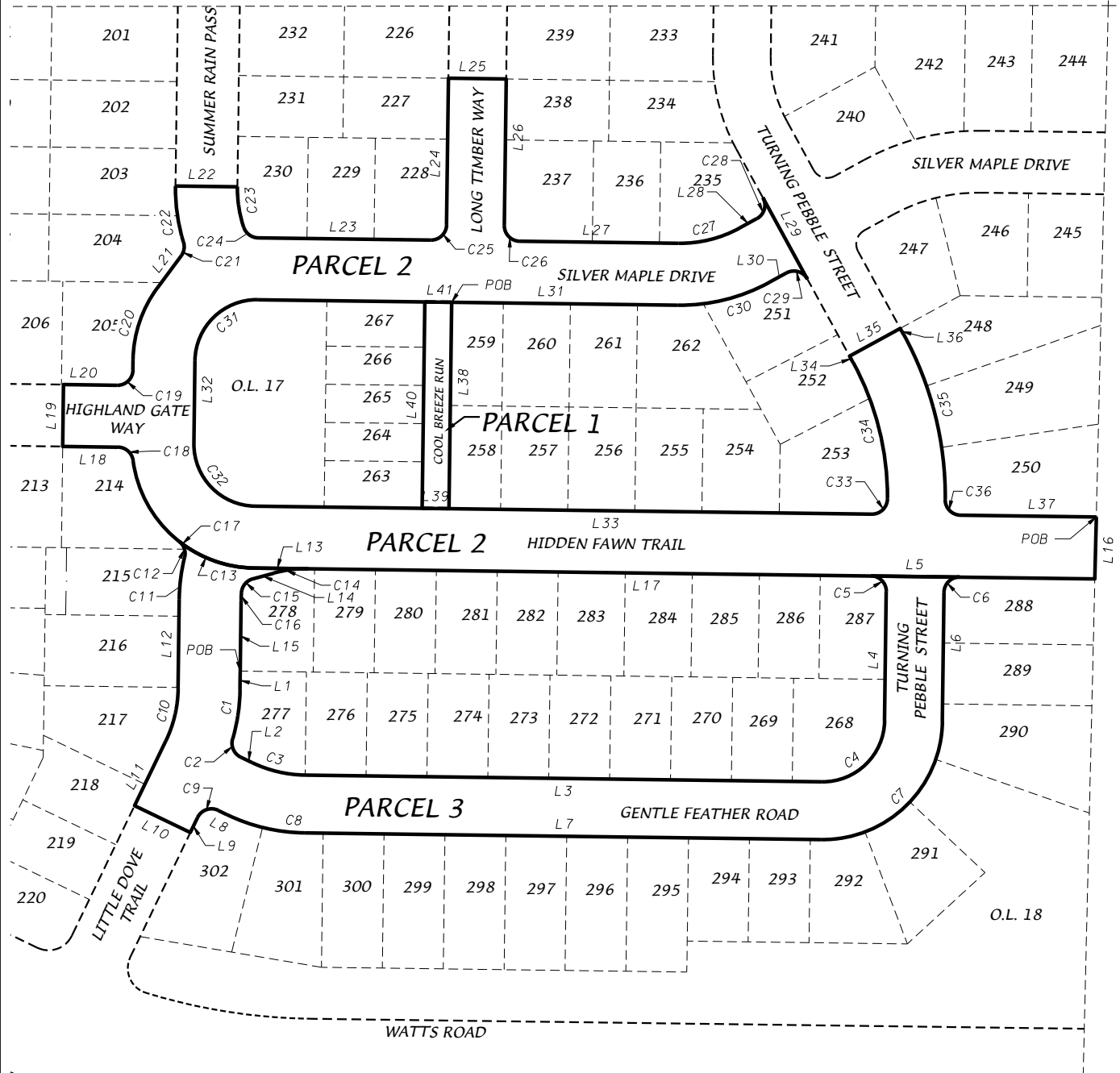
SHEET 1 OF 3

DATE: 10-17-23
FN: 23-07-101

EXHIBIT "A"

PUBLIC RIGHT-OF-WAYS TO BE VACATED AND DISCONTINUED ACACIA RIDGE

LANDS



D'ONOFRIO KOTTKE AND ASSOCIATES, INC.

7530 Westward Way, Madison, WI 53717
 Phone: 608.833.7530 • Fax: 608.833.1089
 YOUR NATURAL RESOURCE FOR LAND DEVELOPMENT

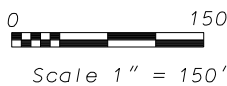


EXHIBIT "A"
PUBLIC RIGHT-OF-WAYS TO BE VACATED AND DISCONTINUED
ACACIA RIDGE

LINE TABLE		
LINE	DIRECTION	LENGTH (FEET)
L1	S00° 43' 08"W	17.85
L2	S64° 15' 23"E	12.13
L3	S89° 15' 33"E	500.57
L4	N00° 44' 27"E	125.00
L5	S89° 15' 33"E	86.00
L6	S00° 44' 27"W	125.00
L7	N89° 15' 33"W	500.57
L8	N64° 15' 23"W	9.42
L9	S25° 44' 37"W	15.99
L10	N64° 15' 23"W	60.00
L11	N25° 44' 37"E	69.61
L12	N00° 43' 08"E	86.55
L13	S89° 15' 33"E	52.40
L14	S74° 33' 45"W	21.07
L15	S00° 43' 08"W	68.70
L16	S01° 20' 36"W	60.00
L17	N89° 15' 33"W	814.51
L18	N89° 15' 33"W	53.44
L19	N00° 44' 27"E	60.00
L20	S89° 15' 33"E	52.00
L21	N36° 38' 17"E	38.36
L22	S89° 15' 33"E	60.00
L23	S89° 15' 33"E	167.27
L24	N00° 44' 27"E	142.00
L25	S89° 15' 33"E	56.00
L26	S00° 44' 27"W	142.00
L27	S89° 15' 33"E	153.89
L28	N61° 19' 43"E	19.04
L29	S28° 40' 17"E	90.00
L30	S61° 19' 43"W	19.04
L31	N89° 15' 33"W	406.89
L32	S00° 44' 27"W	80.00
L33	S89° 15' 33"E	597.49
L34	N28° 40' 17"W	6.89
L35	N61° 19' 43"E	56.00
L36	S28° 40' 17"E	6.89
L37	S89° 15' 33"E	131.64
L38	S00° 44' 27"W	200.00
L39	N89° 15' 29"W	26.00
L40	N00° 44' 27"E	200.00
L41	S89° 15' 33"E	26.00

CURVE TABLE			
CURVE NUMBER	RADIUS (FEET)	CHORD BEARING	CHORD (FEET)
C1	180.00	S08°27' 05"W	48.44
C2	15.00	S24°02' 10"E	19.37
C3	122.00	S76°45' 28"E	52.82
C4	60.00	N45°44' 27"E	84.85
C5	15.00	N44°15' 33"W	21.21
C6	15.00	S45°44' 27"W	21.21
C7	116.00	S45°44' 27"W	164.05
C8	178.00	N76°45' 28"W	77.06
C9	15.00	S70°44' 37"W	21.21
C10	120.00	N13°13' 52"E	52.00
C11	180.00	N07°16' 36"E	41.12
C12	15.00	N18°57' 23"W	16.25
C13	120.00	S70°30' 11"E	77.17
C14	120.00	S82°39' 06"W	33.77
C15	15.00	S39°21' 12"W	17.30
C16	120.00	S02°25' 53"W	7.17
C17	120.00	N48°26' 34"W	156.87
C18	15.00	N48°26' 34"W	19.61
C19	15.00	N45°44' 27"E	21.21
C20	120.00	N18°41' 22"E	73.96
C21	15.00	N09°53' 16"E	13.50
C22	180.00	N08°03' 39"W	55.09
C23	120.00	S08°45' 50"E	39.63
C24	15.00	S53°45' 50"E	17.42
C25	15.00	N45°44' 27"E	21.21
C26	15.00	S44°15' 33"E	21.21
C27	120.00	N76°02' 05"E	60.93
C28	15.00	N16°19' 43"E	21.21
C29	15.00	N73°40' 17"W	21.21
C30	180.00	S76°02' 05"W	91.39
C31	60.00	S45°44' 27"W	84.85
C32	60.00	S44°15' 33"E	84.85
C33	15.00	N45°32' 37"E	21.29
C34	272.00	N14°09' 45"W	136.29
C35	328.00	S14°06' 47"E	164.90
C36	15.00	S44°24' 24"E	21.16



D'ONOFRIO KOTTKE AND ASSOCIATES, INC.
7530 Westward Way, Madison, WI 53717
Phone: 608.833.7530 • Fax: 608.833.1089
YOUR NATURAL RESOURCE FOR LAND DEVELOPMENT