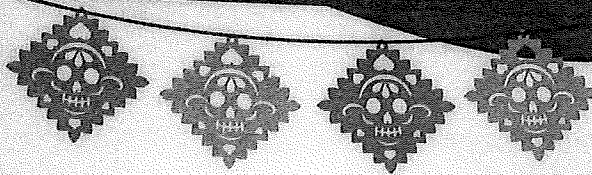


# LUNCH MENU

SERVED BETWEEN 11:00 AM TO 3:00 PM  
MONDAY THROUGH FRIDAY



- CHIMICHANGA LUNCH** 6.99  
(1) Fried flour tortilla filled with beef or chicken, topped with cheese sauce. Served with guacamole salad, rice or beans.
- ENCHILADA LUNCH** 6.99  
(2) Soft corn tortillas stuffed with your choice of cheese, ground beef, shredded beef, shredded chicken or beans. Served with rice and beans.
- QUESADILLA LUNCH** 6.99  
8-Inch Quesadilla of your choice of cheese, ground beef, shredded beef, shredded chicken or beans. Served with rice and beans.
- TAMAL LUNCH** 6.99  
Corn dough filled with shredded chicken and green salsa topped with red mild sauce and melted cheese. Served with rice and beans.
- TOSTADA LUNCH** 6.99  
One tostada of your choice of ground beef, shredded beef or shredded chicken with beans topped with queso fresco, lettuce, tomatoes and sourcream. Served with rice and beans.
- BURRITO LUNCH** 6.99  
8-inch burrito of your choice of cheese, ground beef, shredded beef, shredded chicken or beans. Served with rice and beans.
- BURRITO FRITO LUNCH** 6.99  
Fried burrito filled with shredded beef or chicken. Served with rice and refried beans.
- BURRITO CHOCHO LUNCH** 7.99  
Flour tortilla filled with grilled chicken and topped with cheese sauce. Served with pico de gallo, rice and beans.
- BURRITO CHEESE STEAK LUNCH** 7.99  
Burrito stuffed with tender slices of steak cooked with onions and tomatoes, topped with cheese sauce. Served with rice and refried beans.
- BURRITO GRANDE LUNCH** 7.99  
Flour tortilla filled with steak or chicken, rice, refried beans, lettuce, sour cream and pico de gallo. Topped with cheese sauce and ranchera sauce.
- BURRITO ROQUETA LUNCH** 7.99  
Flour tortilla filled with grilled chicken or pork. Topped with cheese sauce, tomatillo sauce and pico de gallo. Served with rice and refried beans.
- FAJITA BURRITO LUNCH** 8.99  
Burrito stuffed with tender slices of steak or chicken cooked with onions, tomatoes and bell peppers, topped with cheese sauce. Served with rice and beans.
- TACO LUNCH** 7.99  
Two tacos of your choice of ground beef, shredded beef or shredded chicken. Corn or flour tortilla or hardshell served with rice and beans.
- SANTA FE LUNCH** 7.99  
Grilled chicken breast with onions, tomatoes, bell peppers, mushrooms and cheese sauce. Served with rice, refried beans and corn or flour tortillas.
- FAJITA QUESADILLA LUNCH** 7.99  
Flour tortilla filled with chicken or steak cooked with cheese, bell peppers, onions and tomatoes. Served with rice and refried beans, lettuce and guacamole salad.
- CHORIPOLLO LUNCH** 7.99  
Grilled seasoned chicken breast topped with chorizo and cheese sauce. Served with rice, refried beans and corn or flour tortillas.
- POLLO ASADO LUNCH** 7.99  
Grilled chicken breast topped with cooked onion. Topped with cheese sauce. Served with rice, guacamole and corn or flour tortillas.
- HUEVOS CON CHORIZO** 7.99  
Two scrambled eggs topped with chorizo. Served with rice, refried beans and corn or flour tortillas.
- HUEVOS RANCHEROS** 7.99  
Two eggs on two corn tortillas topped with ranchera sauce and mozzarella cheese served with rice and beans.
- LUNCH FAJITA**  
Lunch size portion choice of meat cooked with onions, bell peppers and tomatoes. Served with rice, refried beans and corn or flour tortillas.
- STEAK OR CHICKEN** 8.99  
**MIXED (steak and chicken)** 8.99  
**SHRIMP** 10.99  
**TEXANA (steak, chicken and shrimp)** 10.99

**Add Soda**

**\$1.00**

Two refills



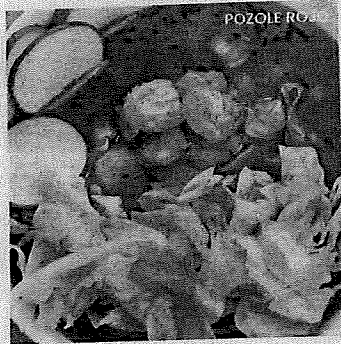
## PARRILLADA

Meats come cooked on top of a hot plate. Includes steak, chicken, chorizo, ribs and shrimp. Include a dinner plate with rice, beans and crema salad with your choice of tortillas (flour or corn).



ONE PERSON  
TWO PEOPLE

24.95  
44.95



## SOUPS WEEKEND ONLY

### MENUDO

Mexican soup also known as pancita made with beef stomach (tripe) in broth with a red chili pepper base. Choice of flour or corn tortillas.



### ROJO

pork meat, red chiles and lots of hominy corn. It comes with lettuce, onions, oregano, red chile de arbol and radish.

### CHICKEN SOUP

Chunks of chicken with rice, pico de gallo and avocado. Choice of flour or corn tortillas.

### CALDO DE CAMARON

Made with shrimp and fish talapia, with potatoes, carrots and celery. Served with tortillas or bread.

### SOPA DE MARISCOS

Made with shrimp, seafood mix, fish talapia, with potatoes, carrots and celery. Served with tortillas or bread.



## MILANESA CON PAPAS

Choice of flour or corn tortillas. Breaded steak or chicken with french fries, rice and crema salad.

## T-BONE ASADO

A tender 14 oz seasoned T-bone steak, with cactus, grilled onions, grilled jalapeño, guacamole salad, rice, beans and your choice of flour or corn tortillas.

9.99

10.25

14.99

15.99

12.99

19.50

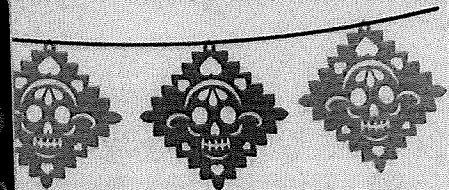
## FAJITAS

Our fajita dinner comes with your choice of meat cooked with onions, tomatoes and peppers. Served with crema salad, rice and beans. Your choice of tortillas (flour or corn).

	REGULAR	DOUBLE
STEAK OR CHICKEN	14.99	26.99
SHRIMP	17.99	32.99
MIXED (Steak and Chicken)	15.99	28.99
TEXANA (Steak, Chicken and Shrimp)	18.50	34.25
RANCHERA (Steak, Chicken, Shrimp and Bacon)	19.50	35.50
HOUSE SPECIAL (Steak, Chicken, Shrimp and Pork)	19.50	35.50
VEGETARIAN (VegI blend mix)	11.95	22.00

	REGULAR	DOUBLE
OSCAR SPECIAL	20.99	39.99

We use a special recipe to cook steak, chicken, shrimp and chorizo. Served on top of a quesadilla with sauteed onions, bell peppers, rice and refried beans. Garnished with lettuce, sour cream and guacamole salad. Your choice of tortillas (flour or corn).







## TACO DINNER PLATE

3 Tacos served with rice and beans. Choice of hard shell, corn or flour tortilla.

American style (Cheese, lettuce and tomatoes)

Mexican style (Cilantro and onions)

CARNITAS	12.99	CAMPECHANO	13.99
CHORIZO	12.99	FISH TILAPIA	14.99
STEAK	12.99	SHRIMP <i>Camaron</i>	15.99
GRILLED CHICKEN	12.99		
LENGUA-TONGUE	14.99	MEXICAN-AMERICAN	0.50
		STYLE PER TACO	



## MEXICAN ENCHILADAS

**ENCHILADAS DE MOLE** 11.99

Three chicken enchiladas topped with mole sauce, queso fresco, onions, sour cream and sesame seeds. Served with rice and beans.

**ENCHILADAS SUIZAS** 12.99

two chicken and two beef enchilada topped with cheese, green mild sauce, sour cream and pinch of cilantro on top. Served with rice and beans.

**ENCHILADAS SUPREME** 12.99

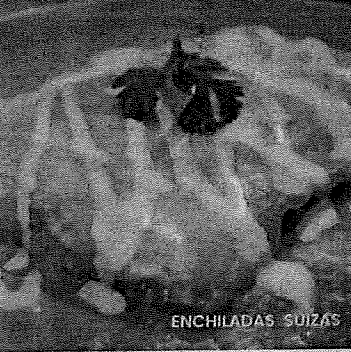
One chicken, one beef, one cheese and one bean enchilada topped with ranchera sauce, lettuce, sour cream, guacamole, tomatoes. Served with rice and beans.

**ENCHILADAS VERDES** 12.50

Three cheese enchiladas topped with green sauce and pork (carnitas). Served with rice and beans.

**ENCHILADAS RANCHERAS** 12.50

Three cheese enchiladas topped with steak and ranchera sauce. Served with rice and beans.



## COMBINATIONS

All combinations are served with rice and refried beans.

**OSCAR'S COMBINATION** 12.99

- 1 Burrito 8-Inch flour tortilla
- 1 Tamal
- 1 Taco

**AZTECA COMBINATION** 13.99

- 1 Chile Poblano
- 1 Tamal
- 1 Enchilada

**ADD GUACAMOLE SALAD** 1.50

### OPTIONS

- GROUND BEEF
- SHREDDED BEEF
- SHREDDED CHICKEN
- BEANS
- CHEESE
- SPINACH
- MUSHROOMS
- CHORIZO
- STEAK
- GRILLED CHICKEN
- CARNITAS

### SAUCES

- RANCHERA SAUCE
- MOLE SAUCE
- GREEN SAUCE
- RED MILD SAUCE

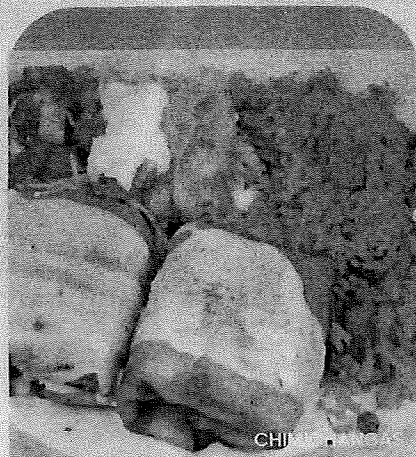
## DESSERTS

- TRES LECHES 4.50
- FLAN 4.99
- FRIED ICE 5.50
- CREAM

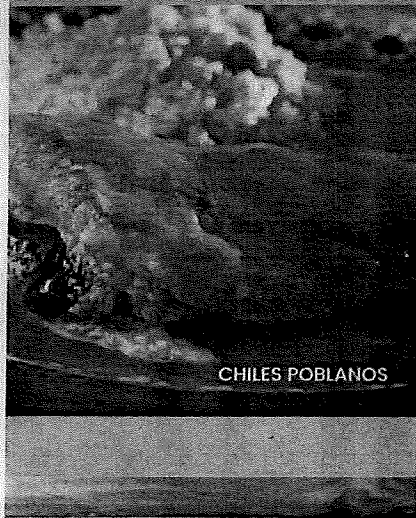
*Churros 2.99 each  
Plain or Cajeta*



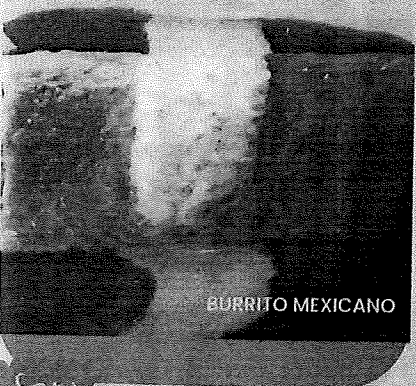




CHI



CHILES POBLANOS



BURRITO MEXICANO

## HOUSE SPECIALS

### CHIMICHANGAS

Two deep fried flour tortillas filled with your choice of meat. Topped with melted cheese sauce, served with rice or refried beans and guacamole salad.

11.99

### STEAK OR GRILLED CHICKEN SHRIMP

12.99

15.50

### QUESADILLA GRANDE

10-inch tortilla filled with steak or chicken,bacon,tomatoes onions and mushrooms, topped with melted cheese sauce and ranchera sauce. Served with rice and salad.

13.45

### FAJITA QUESADILLA

10-inch Flour tortilla filled with cheese, your choice of meat cooked with bell peppers, onion and tomatoes, served with rice, refried beans and guacamole salad.

### STEAK OR CHICKEN

13.50

### SHRIMP (10 PCS)

15.49

### CHILES POBLANOS

Two poblano peppers stuffed with cheese dipped in egg butter and then fried, topped with ranchera sauce and melted mozzarella cheese and pinch of cilantro on top, Served with rice, beans, guacamole salad and corn or flour tortillas.

15.50

### TAQUITOS MEXICANOS

11.25

Four rolled deep fried corn tortillas, two chicken and two shredded beef. Topped with sour cream, guacamole and hot molcahete sauce. Served with lettuce and pico de gallo.

## HOUSE BURRITOS

### BURRITO CHEESE STEAK

Two burritos stuffed with tender steak cooked with onions and tomatoes topped with melted cheese, served with guacamole salad and rice or refried beans.

13.50

### BURRITO ROQUETA

Two flour tortillas filled with grilled chicken or pork, topped with melted cheese sauce, green sauce and pico de gallo, served with rice and refried beans.

12.50

### BURRITOS TEXANOS

Two burritos filled with grilled steak, rice and refried beans topped with melted cheese sauce, served with guacamole salad.

12.99

### FAJITA BURRITO

Two burritos, stuffed with your choice of meat. Cooked with onions, tomatoes, bell peppers and topped with melted cheese sauce, served with rice and refried beans.

### STEAK OR CHICKEN

12.99

### SHRIMP

16.50

### BURRITO DELUXE

Two burritos, one chicken and refried beans and one beef and refried beans topped with ranchera sauce, lettuce, sour cream and tomatoes.

11.99

### BURRITOS CHOCHOS

Two flour tortillas filled with grilled chicken topped with melted cheese sauce, served with pico de gallo, rice and refried beans.

12.50

### BURRITO MEXICANO

(12 inch flour tortilla filled with chicken or steak, grilled peppers, onions, tomatoes rice and refried beans, topped with melted cheese sauce, green sauce and red sauce.

12.99

### BURRITO GRANDE

12-inch flour tortilla filled with steak or chicken, rice, refried beans. Smothered with melted cheese sauce and ranchera sauce. Topped with lettuce sour cream and pico de gallo.

12.99

### BURRITO CAMPECHANO

12 - inch flour tortilla filled with steak or chicken and chorizo, rice and beans. Smothered with melted cheese sauce and ranchera sauce. Topped with lettuce, guacamole, sour cream and pico de gallo.

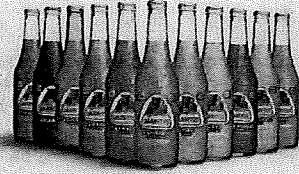
13.45



# BEVERAGES

## MEXICAN BEVERAGE

HORCHATA	2.99
JAMAICA	
TAMARINDO	
COCA COLA MEXICANA	
JARRITOS (Flavors)	
RED BULL	4.00

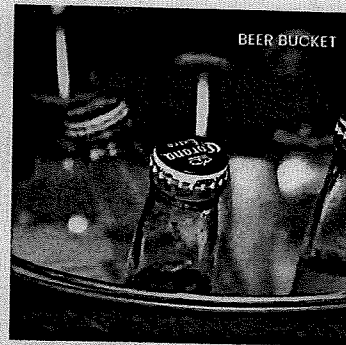


## FOUNTAIN DRINKS

PEPSI PRODUCTS	3.00
----------------	------

## BEERS

BEER DOMESTIC	4.00
<i>Budweiser - Bud Light - Miller Lite</i>	
<i>Coors Light - Michelob Ultra</i>	
<i>Spotted Cow</i>	

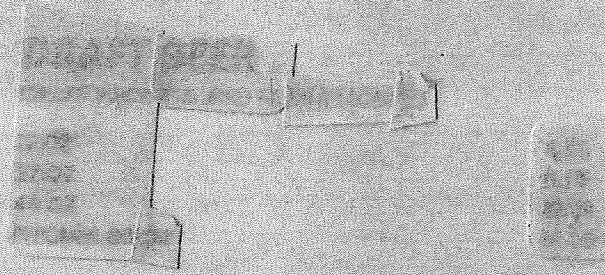


BEER IMPORTED	4.75
---------------	------

*Corona - Corona Light - Corona Familiar*  
*Tecate - Tecate Light - Negra Modelo*  
*Modelo Especial - XX Lager - XX Ambar*  
*Bohemia Victoria - Pacifico - Heineken*

NON ALCOHOLIC BEER	4.00
Heineken 0.0	

BUCKET OF SIX ANY BOTTLED BEER	22.00
--------------------------------	-------



## MICHELADA

REGULAR	8.99
DOUBLE	15.99

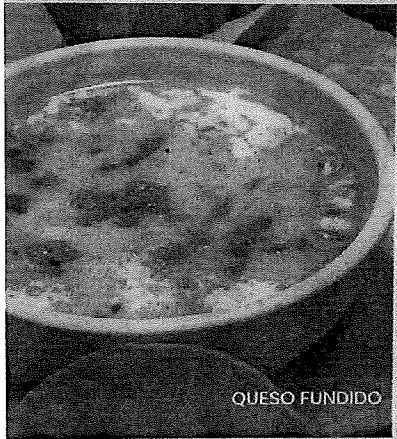


**SCAN & ORDER  
ONLINE**  
[www.taquerlaguzman.com](http://www.taquerlaguzman.com)

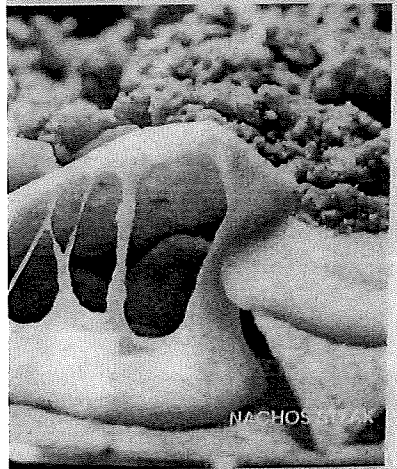




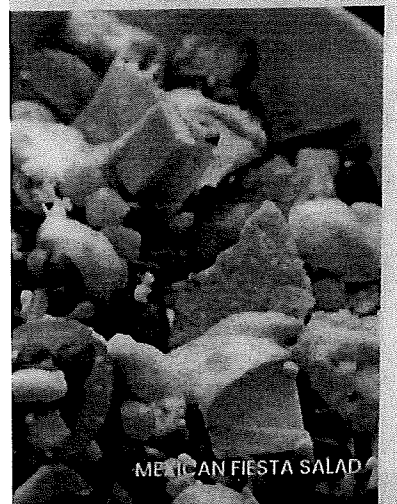
GUACAMOLE DIP



QUESO FUNDIDO



NACHOS



MEXICAN FIESTA SALAD

## DIPS

BEAN DIP	3.99
CHEESE DIP	4.00
GUACAMOLE DIP	4.00
AVOCADO SLICES	1.99
SHREDDED CHEESE	1.00
SOUR CREAM	0.79
PICO DE GALLO	1.00
JALAPEÑO PEPPERS	1.00
CHILES TOREADOS	1.99
QUESO FUNDIDO	7.99
Corn or flour tortilla.	

## SIDES

REFRIED BEANS	2.25
MEXICAN RICE	2.25
TOSTADA DE CAMARÓN	4.25
Open face hard shell tortilla with pico de gallo, lettuce and avocado	
TAMAL	2.75
FLOUR TORTILLAS (3)	0.99
CORN TORTILLAS (5)	0.99
CHILE POBLANO	5.50
COOKED SHRIMP (6)	6.25
(12)	12.00

## NACHOS

Open face hard shell tortilla with refried beans, cheese and meat.

GROUND BEEF OR SHREDDED CHICKEN	8.35
---------------------------------	------

## NACHOS SUPREME

Nachos with melted cheese. Your choice of meat and refried beans. Topped with lettuce, tomatoes, sour cream and guacamole

GROUND BEEF	11.99	STEAK	12.99
SHREDDED BEEF	11.99	GRILLED CHICKEN	12.99
SHREDDED CHICKEN	11.99		

## NACHOS FAJITAS

Nachos with melted cheese. Your choice of meat and refried beans. Topped with lettuce, tomatoes, sour cream and guacamole

SHRIMP (14 pcs)	16.50	STEAK OR GRILLED CHICKEN	16.50
-----------------	-------	--------------------------	-------

## SALADS LOW FAT SIDE

### TACO SALAD

Crispy flour tortilla bowl filled with chicken or beef, refried beans, rice, lettuce, sourcream, guacamole, tomatoes and cheese.

9.99

### FAJITA TACO SALAD

Crispy flour tortilla bowl filled with steak, refried beans, rice, lettuce, sour cream, guacamole and shredded cheese.

STEAK OR CHICKEN	11.99
SHRIMP	13.99

### HABANERO GRILLED SALAD

Spicy flavor salad. Grilled habanero, onions, pineapple and fresh strawberries on a bed of lettuce and spinach.

STEAK OR CHICKEN	11.99
SHRIMP	13.99

### VEGGIE AND LIGHT SIDE

#### MEXICAN FIESTA SALAD

This salad is a party!. avocado, black beans, corn, pico de gallo and queso fresco on a bed of lettuce and spinach. Top with sour cream and tortilla strips.

STEAK OR CHICKEN	13.99
SHRIMP (10 pcs)	15.99

consumption of raw or under cooked food items on the menu may pose a health risk to highly susceptible people such as the elderly, children under 12, pregnant woman and immuno-compromised individuals. CAUTION: ALL PLATES ARE HOT! FOOD ALLERGY. Please ask your server about ingredients.





MOLCAJETE



TRES AMIGOS

## CHEF'S SPECIALS

### CHILE COLORADO

Steak with red chile sauce, Served with rice refried beans, guacamole salad and tortillas.

13.25

### MOLE RANCHERO

Grilled chicken with mole sauce, served with rice, beans and corn or flour tortillas.

12.25

### CARNITAS

Shredded pork served with rice, beans guacamole salad, jalapeno pepper and corn or flour tortillas.

12.95

### POLLO NORTEÑO

Two grilled seasoned chicken breast with six sauteed shrimp and onion topped with pineapple slices and cherries drizzled with melted cheese Served with rice refried beans, guacamole salad and corn or flour tortillas.

15.25

### POLLO ASADO

Grilled seasoned chicken breast with sauteed onions topped with cheese sauce, served with rice, guacamole salad and corn or flour tortillas.

13.25

### POLLO LOCO

Grilled seasoned chicken breast with raw onions topped with cheese and enchilada sauce. Served with rice, guacamole salad and corn or flour tortillas.

13.25

### POLLO SANTA FE

Grilled seasoned chicken breast cooked with onions tomatoes, bell peppers and mushrooms topped with cheese sauce, with rice, refried beans and corn or flour tortillas.

13.99

### ARROZ CON POLLO O CAMARÓN

Your choice of meat with grilled onions, bell peppers and mushrooms. Served on a bed of rice with cream salad. Topped with cheese dip.

### CHICKEN SHRIMP (14 PCS)

14.25

19.45

### CHORIPOLLO

Grilled seasoned chicken breast topped with chorizo and cheese sauce. Served with rice, refried beans, and corn or flour tortillas.

13.75

### CARNE ASADA

Sirloin knuckle steak served with guacamole salad, cactus, grilled onions, grilled jalapeño, rice, refried beans and corn or flour tortillas.

14.99

### BISTEK A LA TAMPIQUEÑA

Sirloin knuckle steak served with rice, refried beans, guacamole salad, one cheese enchilada, orange slices and corn or flour tortillas.

14.95

### BISTEK NORTEÑO

Ribeye steak with six sauteed shrimp and onion topped with pineapple slices and cherries, drizzled with melted cheese, served with rice, refried beans, guacamole salad and corn or flour tortilla.

14.99

### TRES AMIGOS

Grilled chicken breast with steak and shrimp topped with onion pineapple slices and cherries, drizzled with cheese sauce. Served with rice and fried beans, guacamole salad and corn or flour tortillas.

21.50

### SHRIMP COCKTAIL

12 cooked shrimp in a homemade cocktail juice and topped with avocado, cilantro and onions.

15.50

### MOLCAJETE

Served in a hot stone. Chicken, steak, shrimp and chorizo in our special sauce. Topped with shredded cheese, avocado, pico de gallo, jalapeño and cactus. Served with rice, beans, guacamole salad and corn or flour tortillas.

19.50

### CAMARONES AL MOJO DE AJO

14 sauteed shrimp in garlic, butter and tender onions, served with rice, beans, french fries, guacamole salad and corn or flour tortillas.

21.50

### CAMARONES A LA DIABLA

14 cajun spiced shrimp served with guacamole salad, french fries and corn or flour tortilla.

18.99



CHORIPOLLO



SHRIMP COCKTAIL

Warning: The consumption of raw or under cooked food items on the menu may pose a health risk to highly susceptible people such as the elderly, children under age of 4, pregnant woman and immuno-compromised individuals. CAUTION: ALL PLATES ARE HOT! FOOD ALLERGY. Please ask your server about ingredients.







































GENERAL PLAN NOTES:

- A. MECHANICAL, ELECTRICAL, PLUMBING AND FIRE REQUIRED BY CURRENT BUILDING CODES, MEP CONTRACTOR SHALL VERIFY ALL MECHANICAL, ELECTRICAL AND PLUMBING CONSTRUCTION OF NEW SYSTEMS IN TENANT SPACES; SEE MEP PLAN SET.
- B. PROVIDE SOUND INSULATION IN ALL CEILING AREAS. PROVIDE SOUND BATT INSULATION IN ALL CEILING AREAS. PROVIDE SOUND BATT INSULATION IN ALL CEILING AREAS. PROVIDE SOUND BATT INSULATION IN ALL CEILING AREAS.
- C. PROVIDE MOISTURE RESISTANT GWB AT ALL PLUMBING WALLS.
- D. PROVIDE MOISTURE RESISTANT GWB AT ALL INTERIOR WALLS. PROVIDE MOISTURE RESISTANT GWB AT ALL INTERIOR WALLS. PROVIDE MOISTURE RESISTANT GWB AT ALL INTERIOR WALLS.
- E. PROVIDE 2x BLOORING AT ALL GRAB BAR LOCATIONS PER ADA 117.206.
- F. PROVIDE 2x BLOORING AT ALL NEW FLOOR TRANSITIONS AND DOORWAYS.
- G. EXTERIOR DIMENSIONS ARE FROM GRADING TO EDGE OF FOUNDATION WALL UNLESS NOTED OTHERWISE. EXTERIOR DIMENSIONS ARE FROM GRADING TO EDGE OF FOUNDATION WALL UNLESS NOTED OTHERWISE.
- H. INTERIOR DIMENSIONS FOR NEW CONSTRUCTION UNLESS NOTED OTHERWISE. ALL DIMENSIONS UNLESS NOTED OTHERWISE. ALL DIMENSIONS UNLESS NOTED OTHERWISE.
- I. ALL DOORS WITH A CLOSE PROXIMITY OF A PERPENDICULAR WALL SHALL HAVE A TYPICAL DOOR SCHEDULE UNLESS NOTED OTHERWISE. TO DOOR SCHEDULE UNLESS NOTED OTHERWISE.
- J. VERIFY ALL EXISTING CONDITIONS AND ADJUST ALL DIMENSIONS WITH ANY DISCREPANCIES.
- K. CONTRACTOR SHALL NOTIFY ARCHITECT, OWNER AND OWNER IMMEDIATELY UPON DISCOVERY OF ANY DISCREPANCIES WITH PROPOSED MODIFICATIONS.
- L. PIPE EXTENSION TO WALL SHALL BE RELATED TO PIPE EXTENSION TO WALL FROM MECHANICAL.
- M. GENERAL CONTRACTOR TO SECURE CONSTRUCTION AREA DURING CONSTRUCTION AND MAINTAIN A FLOOR TO CEILING DUST BARRIER FOR SEPARATION FOR DUST, DEBRIS AND SOUND.
- N. GENERAL CONTRACTOR TO COORDINATE CONSTRUCTION SCHEDULE TO MINIMIZE IMPACT ON EXISTING OPERATIONS. VERIFY ALL SCHEDULES WITH OWNER. VERIFY ALL SCHEDULES WITH OWNER. VERIFY ALL SCHEDULES WITH OWNER.
- O. TAPE, JOINT AND FINISH ALL DRYWALL PAINT COATING TO BS.

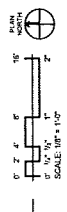
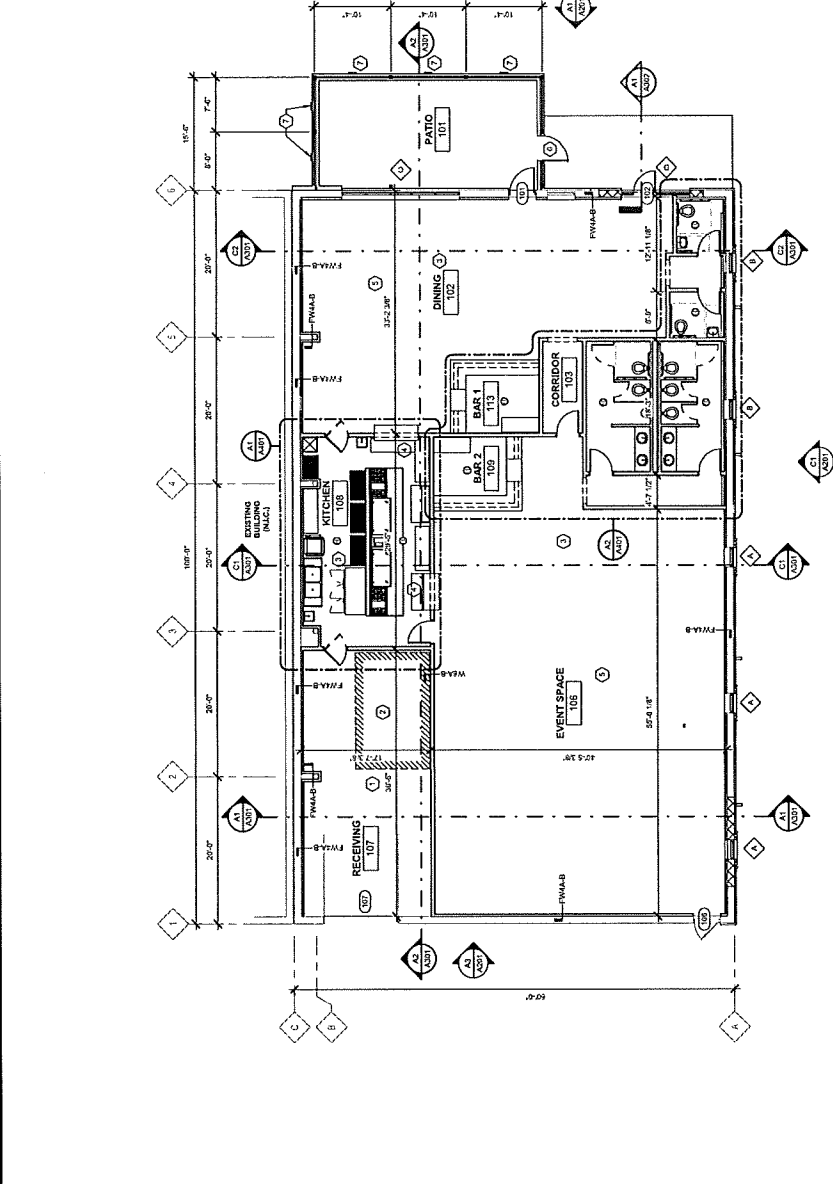
HATCH PATTERN KEY:

- NEW CONSTRUCTION
- EXISTING CONSTRUCTION

PLAN KEYNOTES:

1. MEEL AND LEVEL CONCRETE FLOOR, BROOM FINISH OR SMOOTH.
2. WALKER COOLER / FREEZER LOCATION.
3. MEEL AND LEVEL CONCRETE FLOOR, PREPARE FOR NEW FINISH, FINISH TBD.
4. PASS-THROUGH SERVING WINDOW AND COUNTER.
5. MEEL AND LEVEL CONCRETE FLOOR, FINISH FOR NEW FINISH, POLISH TO LEVEL 2 FINISH.
6. INSTALL LOCKABLE ENTRY GATE, MATCH FENCING EQUIPMENT.
7. PLACE 2x BLOOR, NORTH AND EAST TO FLOOR.

CONFIGURATIONS	FW4A		W4A		W6A		W6C	
	STANDARD	TYPE X	STANDARD	TYPE X	STANDARD	TYPE X	STANDARD	TYPE X
GWB TYPE	NA	BATT	NA	BATT	NA	BATT	NA	BATT
INSULATION TYPE	NA	1-HOUR	NA	1-HOUR	NA	1-HOUR	NA	1-HOUR
FIRE RATING	NA	NA	NA	NA	NA	NA	NA	NA
FIRE TEST	NA	UL-L005	NA	UL-L005	NA	UL-L005	NA	UL-L005



A2 FLOOR PLAN  
1/8" = 1'-0"

BID SET



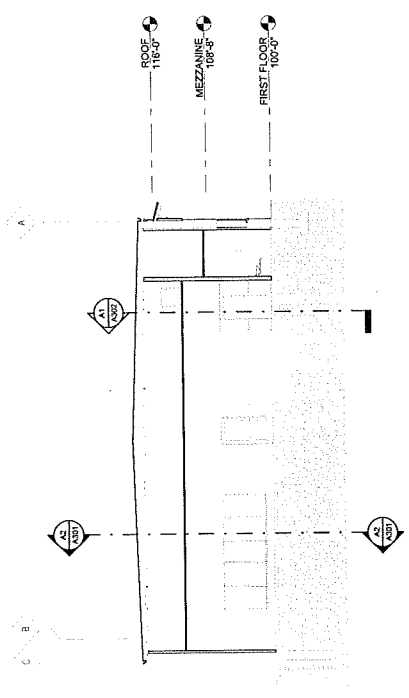




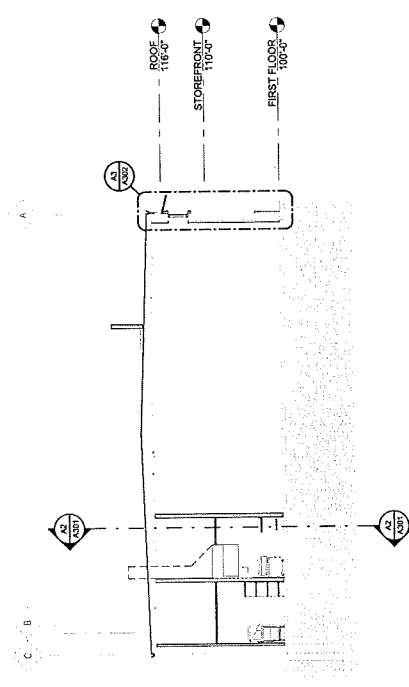




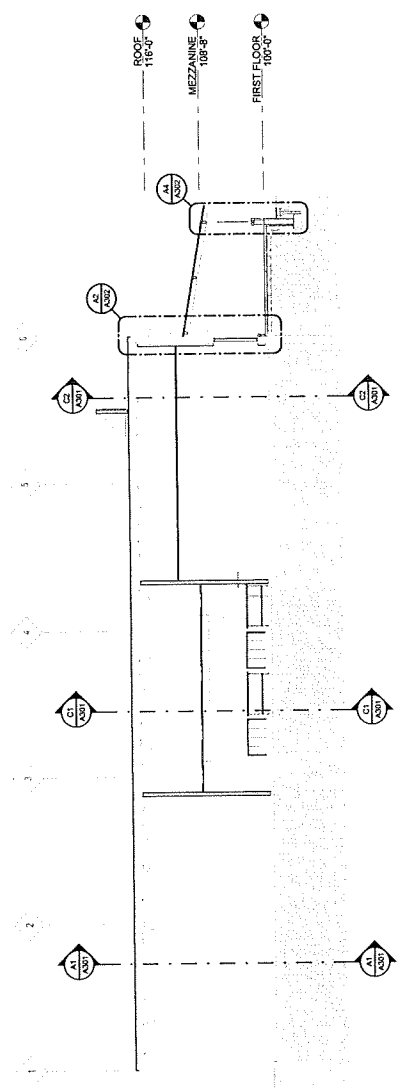
1 2 3 4



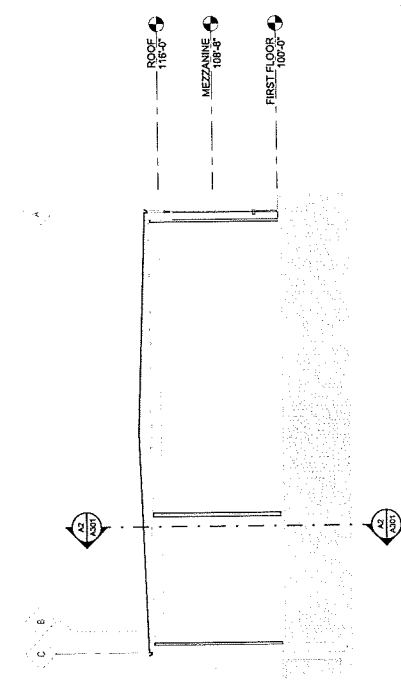
**C2** DINING AREA SECTION  
1/8" = 1'-0"



**C1** KITCHEN SECTION  
1/8" = 1'-0"



**A2** EAST-WEST SECTION  
1/8" = 1'-0"



**A1** EVENT SPACE SECTION  
1/8" = 1'-0"



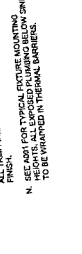
- ALL DIMENSIONS UNLESS OTHERWISE NOTED ARE NOMINAL. REFER TO MANUFACTURER'S LITERATURE FOR EXACT DIMENSIONS. DIMENSIONS ARE FACE UNLESS NOTED OTHERWISE.
- THE THICKNESS OF TILE, WALLS, AND APPLIED FINISHES ARE NOT TO BE INCLUDED IN ROOM DIMENSIONS. THE FINISH ELEMENT SHALL BE DIMENSIONED TO THE FINISH SURFACE.
- FIELD VERIFY ALL DIMENSIONS AND CONDITIONS PRIOR TO ORDERING AND INSTALLATION.
- PROVIDE SOLID WOOD BLOORING FOR CABINETS, COUNTERS, AND ISLANDS. TOILET ACCESSORIES, AND TELEVISIONS.
- PROVIDE SOLID WOOD BLOORING AT ALL GRAB BAR LOCATIONS PER ADA 117.1.200. BASED ON ALL CABINET LAYOUTS. THE MANUFACTURER'S SPECIFIC CABINET SIZES AND CONFIGURATIONS MAY VARY BY MANUFACTURER.
- CABINET QUANTITIES, ISLAND QUANTITY AND LOCATIONS, TOILET ACCESSORIES, AND TELEVISIONS. EXPOSED EQUIPMENT SHALL BE FINISHED.
- APPLIANCES TO COORDINATE ACTUAL CABINET LAYOUT.
- SCRIBE ALL APPLIANCES TO WALL AND COUNTERTOPS TO FIT. APPLIANCE COUNTERTOP, BACK AND SIDE PANELS, CONTROLS, AND FLOOR FINISH BEHIND ALL APPLIANCES.
- ALL FINISHES, APPLIANCES, EQUIPMENT, CABINET LAYOUTS, AND ACCESSORIES PRIOR TO INSTALLATION.
- INTERNAL INTERIOR TRIM DETAILS FOR WALLOW SINKS, SINKS, AND TOILETS SHALL BE FINISHED. FINISH MATCHES IN COLOR, GRAIN AND FINISH.
- SEE A01 FOR SPECIAL MOUNTING DETAILS FOR ALL EXPOSED PLUMBING BELOW SINKS TO BE FINISHED IN TRIMMED CABINET.

1824 SOUTH PARK STREET  
TENANT IMPROVEMENT  
TAQUERIA & EVENT SPACE

PROJECT STATUS  
10/23/2024  
10/23/2024

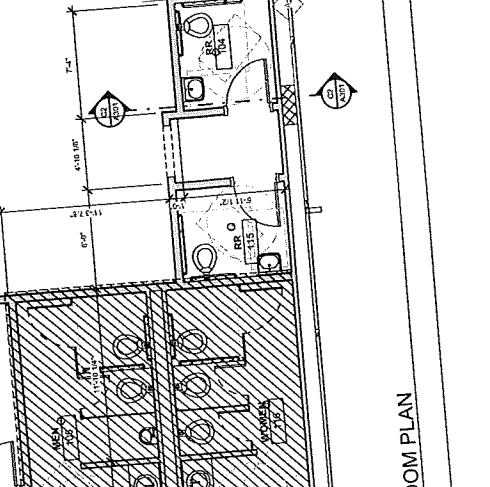
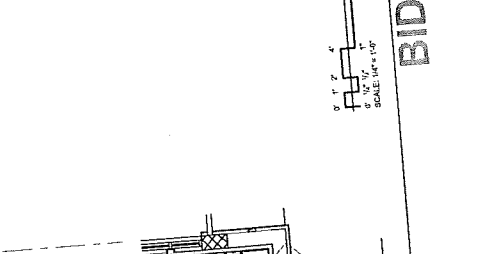
PROJ. NO. 2119-01  
CLIENT: SKETCHWORK ARCHITECTURE, P.C.

ENLARGED PLANS  
A401



A1 KITCHEN PLAN  
1/4\"/>

A2 BAR & RESTROOM PLAN  
1/4\"/>



A3 TAQUERIA & EVENT SPACE  
1/4\"/>

A401 ENLARGED PLANS  
10/23/2024  
10/23/2024























**WATER SOFTENER SCHEDULE (EACH VESSEL)**

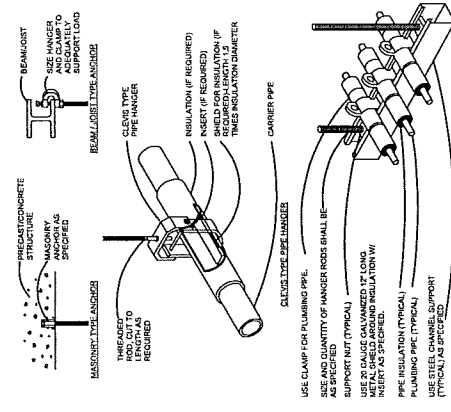
TAG	LOCATION	MANUFACTURER	MODEL	NORMAL FLOW (GPM)	MAXIMUM FLOW (GPM)	SOFTNER CAPACITY (GAL)	WATER WELDER
WS1	RECEIVING STP	WATTS	EW5-3014422N	453	1500	1500	1/2"

**INLINE PUMP SCHEDULE**

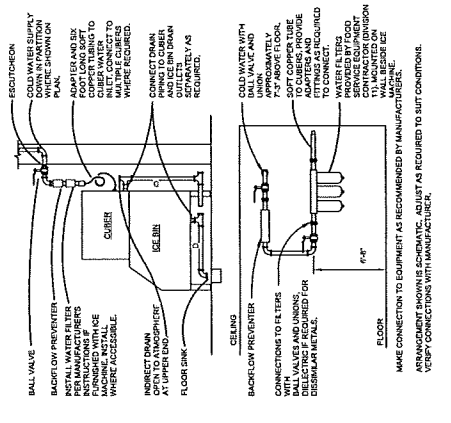
SIG	QTY	LOCATION	MANUFACTURER	MODEL	HP	FLOW (GPM)	HEAD (FT)	NOTES	COMPONENTS	REMARKS
	1	RECEIVING STP	WATTS	EW5-3014422N	1/2	1500	1500		1/2" CONCRETE PAD	

**GAS FIRED WATER HEATER SCHEDULE**

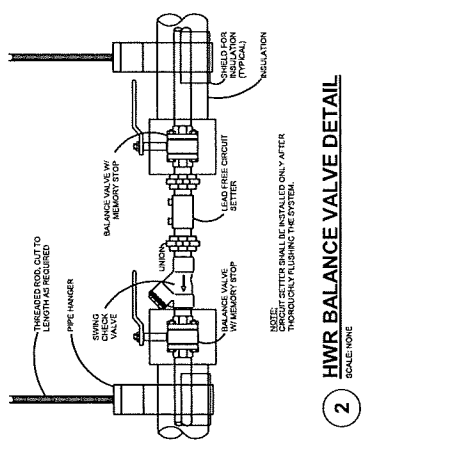
TAG	LOCATION	MANUFACTURER	MODEL	BTU/HOUR	TEMPERATURE	TYPE	REMARKS
GH1	RECEIVING STP	WATTS	EW5-3014422N	1500	1500	1500	1/2" CONCRETE PAD



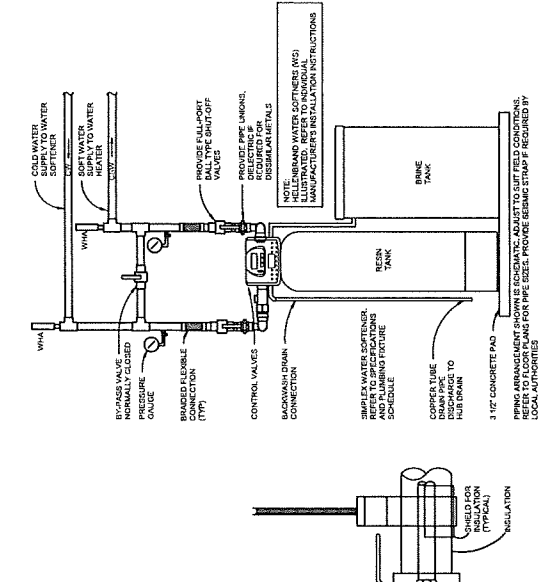
**4 PIPE HANGER DETAILS**  
SCALE: NONE



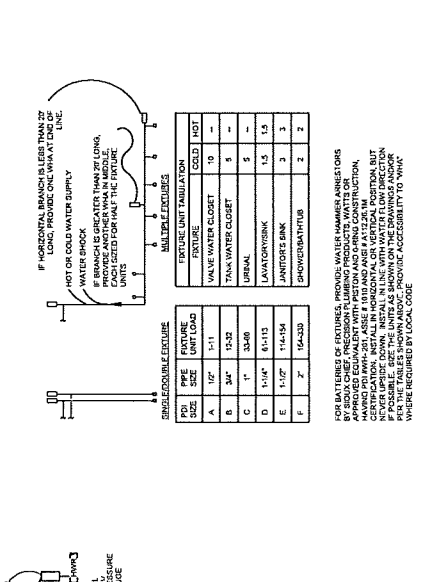
**3 ICE MACHINE CONNECTION DETAIL**  
SCALE: NONE



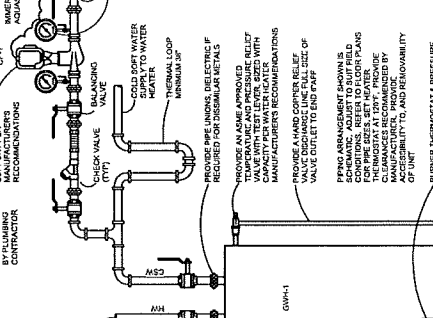
**2 HWR BALANCE VALVE DETAIL**  
SCALE: NONE



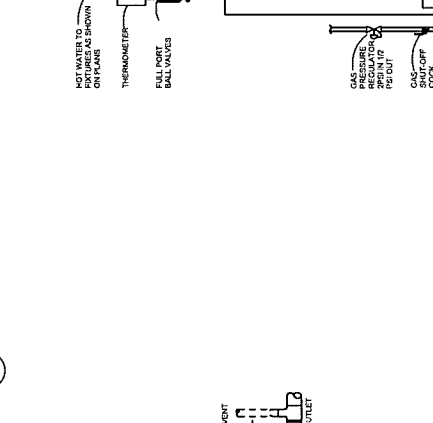
**1 SIMPLEX WATER SOFTNER DETAIL**  
SCALE: NONE



**5 WATER HAMMER ARRESTOR DETAIL**  
SCALE: NONE



**6 GAS WATER HEATER DETAIL**  
SCALE: NONE



**7 INTERIOR BELOW SLAB GREASE INTERCEPTOR DETAIL**  
SCALE: NONE







