

Exhibit A

PUBLIC RIGHT OF WAYS TO BE VACATED AND DISCONTINUED



D'ONOFRIO KOTTKE AND ASSOCIATES, INC.

7530 Westward Way, Madison, WI 53717

Phone: 608.833.7530 • Fax: 608.833.1089

YOUR NATURAL RESOURCE FOR LAND DEVELOPMENT



Scale 1" = 500'

Exhibit A

PUBLIC RIGHT OF WAYS TO BE VACATED AND DISCONTINUED

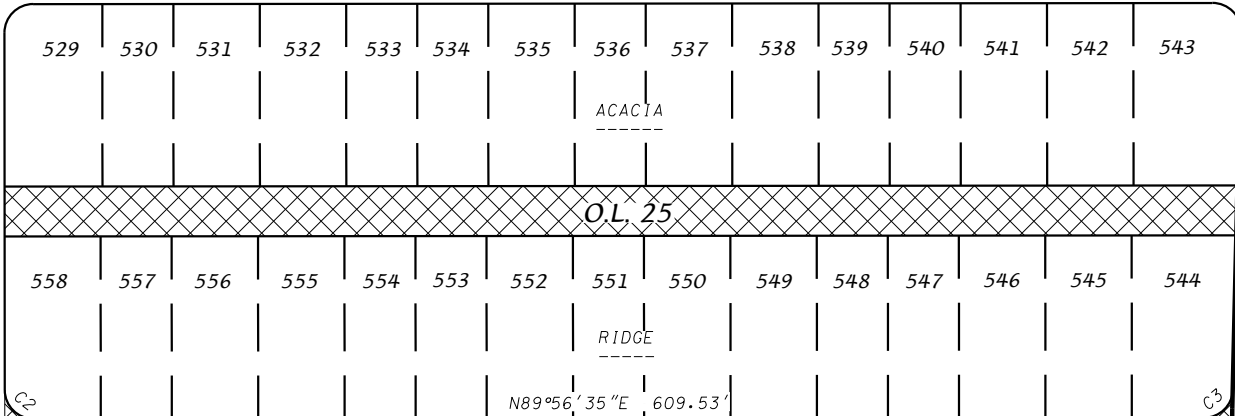
ACACIA RIDGE REPLAT NO. 2'

HONEY HARVEST LANE

WHITE SKY PASS

LONE OAK LANE

N00°03'25"W
90.00'



VALLEY VIEW ROAD

O.L. 17
LINDEN PARK

LINE TABLE

LINE#	DIRECTION	LENGTH
L1	S1°20'36"W	10.02'
L2	S20°29'13"E	6.44'
L3	S89°56'35"W	54.93'

CURVE TABLE

CURVE NO.	ARC LENGTH	CURVE RADIUS	CENTRAL ANGLE	CHORD BEARING	CHORD LENGTH
C1	23.56'	15.00'	90°00'00"	S44°56'35"W	21.21'
C2	23.56'	15.00'	90°00'00"	S45°03'25"E	21.21'
C3	23.20'	15.00'	88°35'59"	N45°38'36"E	20.95'
C4	69.72'	183.00'	21°49'49"	S9°34'18"E	69.30'
C5	18.21'	15.00'	69°34'12"	N55°16'19"W	17.11'

D'ONOFRIO KOTTKE AND ASSOCIATES, INC.

7530 Westward Way, Madison, WI 53717
Phone: 608.833.7530 • Fax: 608.833.1089
YOUR NATURAL RESOURCE FOR LAND DEVELOPMENT



Scale 1" = 100'

PUBLIC RIGHT-OF-WAY
GRANTED BY DOC. NO. 5883303
TO BE VACATED/DISCONTINUED