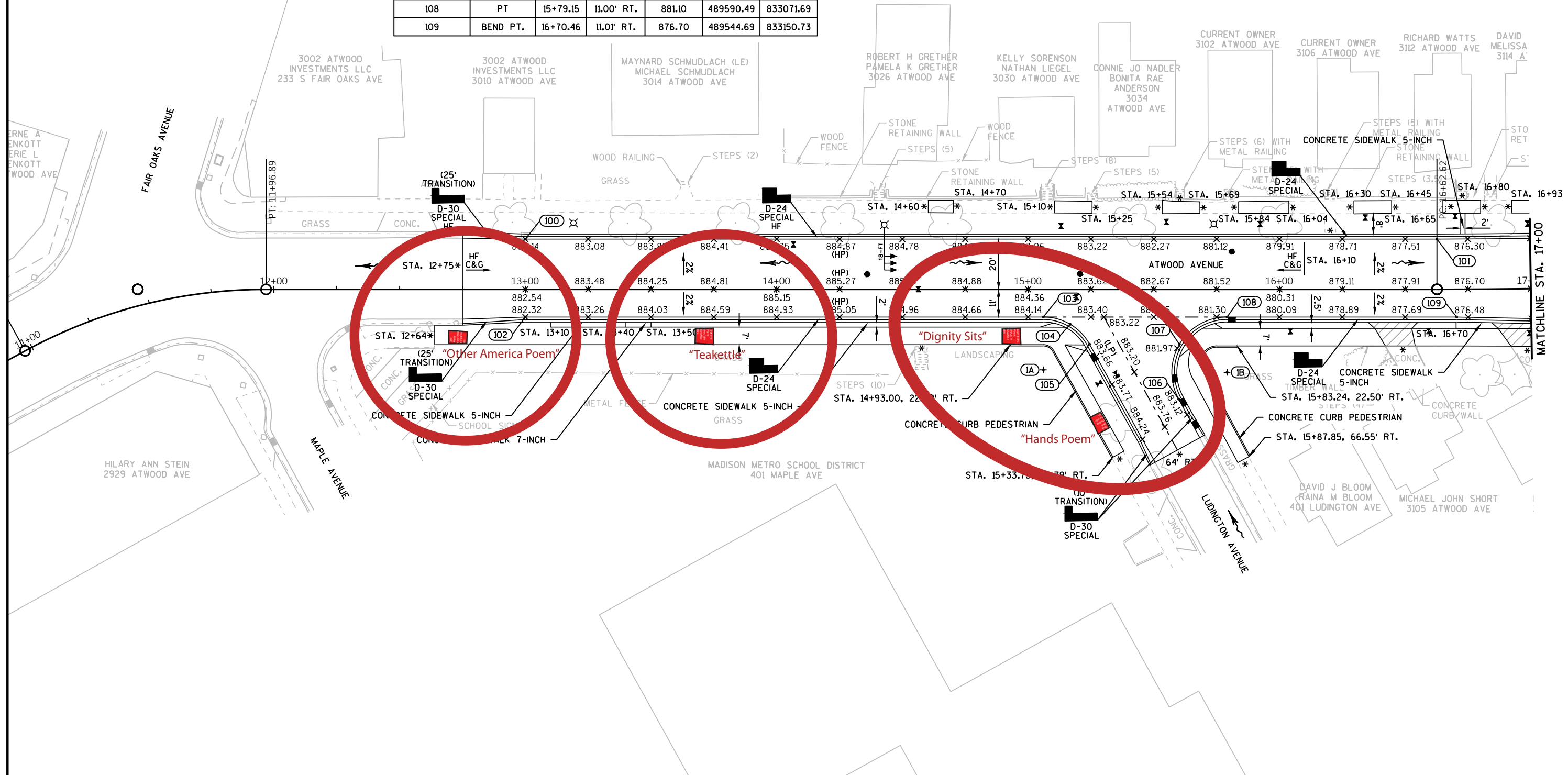


CURB & GUTTER STAKING INFORMATION						
POINT NUMBER	DESCRIPTION	STATION	OFFSET	ELEVATION	NORTHING	EASTING
100	BEND PT.	13+00.00	20.00' LT.	882.14	489757.25	832845.69
101	PC	16+62.62	20.00' LT.	876.90	489575.47	833159.45
102	BEND PT.	13+00.00	11.00' RT.	882.32	489730.43	832830.15
103	PC	15+06.07	11.00' RT.	883.98	489627.12	833008.46
104	MID PT.	15+16.72	13.90' RT.	883.78	489619.27	833016.22
105	PT	15+24.43	21.80' RT.	883.67	489608.57	833018.93
106	PC	15+59.92	43.68' RT.	882.84	489571.86	833038.67
107	MID PT.	15+60.19	21.84' RT.	881.91	489590.61	833049.85
108	PT	15+79.15	11.00' RT.	881.10	489590.49	833071.69
109	BEND PT.	16+70.46	11.01' RT.	876.70	489544.69	833150.73

CURB & GUTTER RADIUS STAKING INFORMATION					
POINT NUMBER	RADIUS	STATION	OFFSET	NORTHING	EASTING
1A	20.00'	15+06.07	32.00' RT.	489608.95	832997.93
1B	21.00'	15+79.15	33.00' RT.	489571.45	833060.66

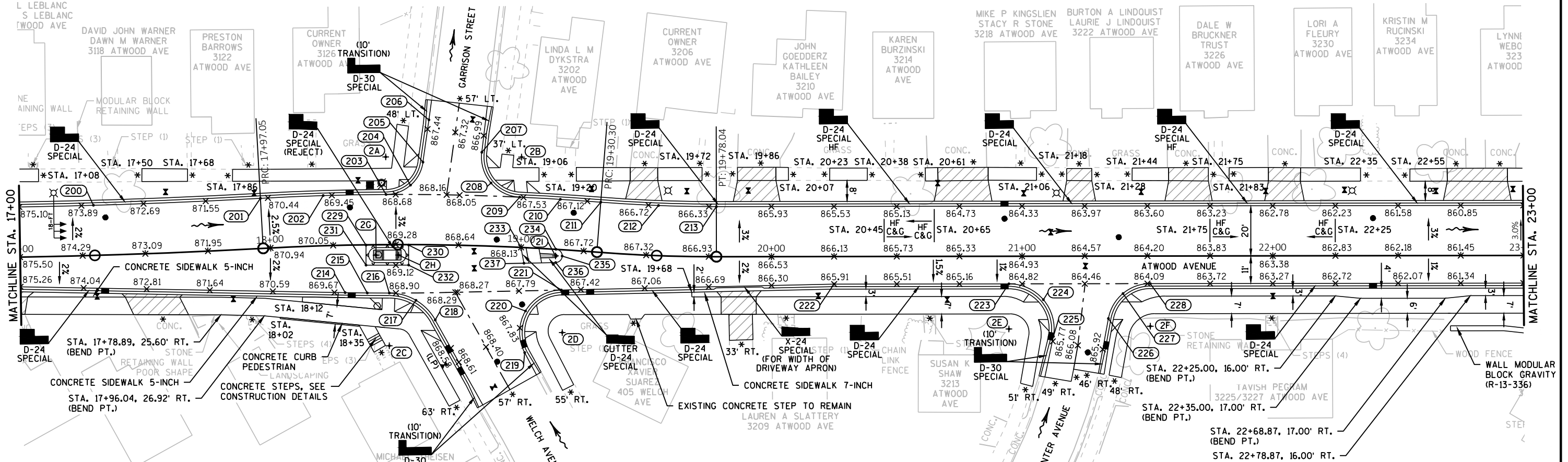




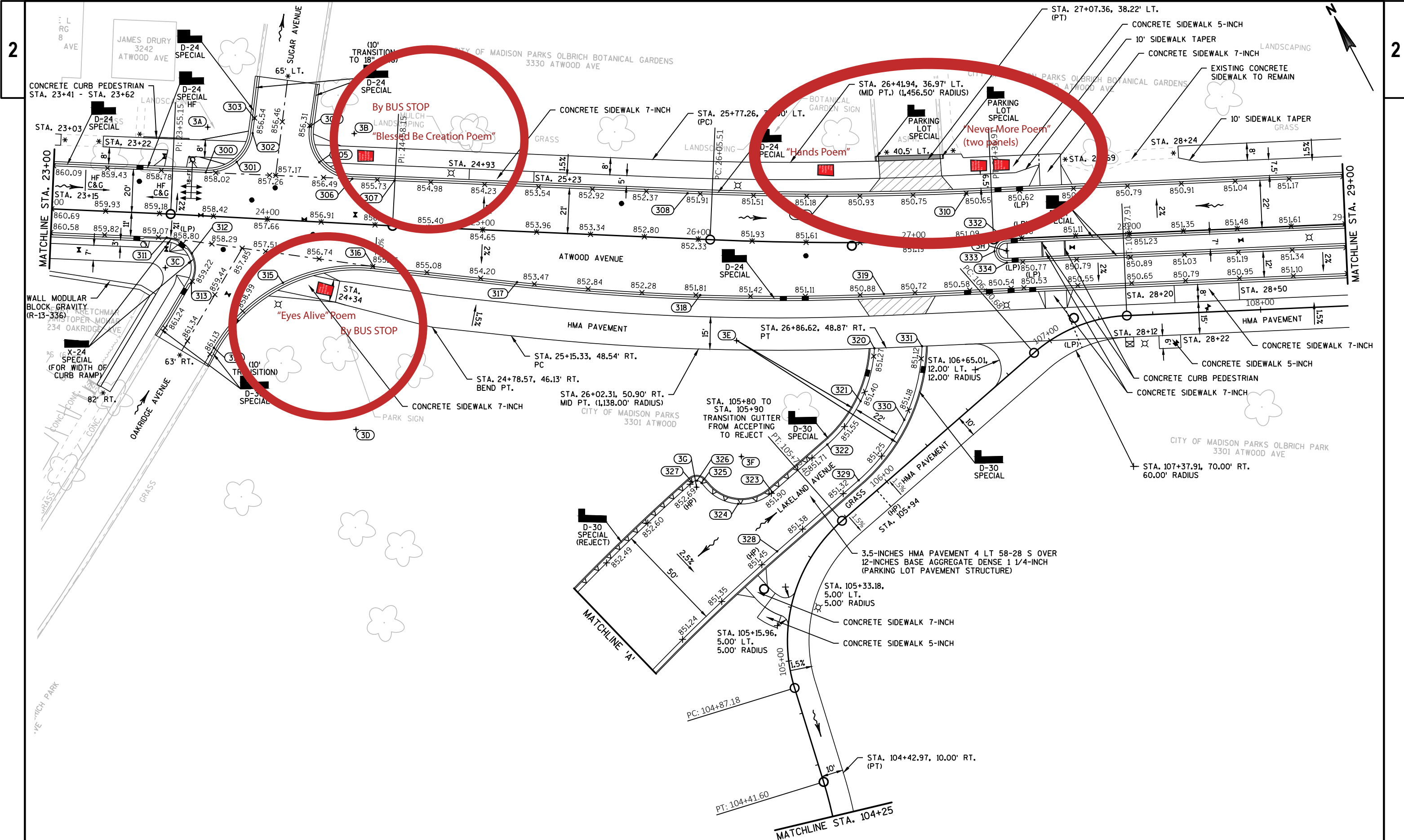
CURB & GUTTER STAKING INFORMATION						
POINT NUMBER	DESCRIPTION	STATION	OFFSET	ELEVATION	NORTHING	EASTING
200	MID PT.	17+29.83	20.00' LT.	873.66	489542.82	833217.59
201	PT/PC	17+97.05	20.00' LT.	870.57	489511.75	833276.58
202	MID PT.	18+21.61	20.00' LT.	869.58	489500.10	833298.76
203	PT/PC	18+46.18	20.00' LT.	868.79	489487.91	833320.65
204	MID PT.	18+55.75	23.69' LT.	868.47	489486.19	833330.97
205	PT	18+60.54	32.92' LT.	868.11	489491.64	833339.90
206	BEND PT.	18+62.68	49.81' LT.	867.26	489505.03	833350.44
207	PC	18+83.15	37.28' LT.	867.23	489483.22	833362.16
208	MID PT.	18+87.11	25.17' LT.	867.66	489470.79	833359.19
209	PT/PC	18+98.54	20.00' LT.	867.56	489460.15	833366.27
210	MID PT.	19+14.42	20.00' LT.	867.29	489451.26	833379.81
211	PT/PC	19+30.30	20.00' LT.	867.04	489442.16	833393.22
212	MID PT.	19+54.17	20.00' LT.	866.66	489429.42	833412.45

CURB & GUTTER STAKING INFORMATION						
POINT NUMBER	DESCRIPTION	STATION	OFFSET	ELEVATION	NORTHING	EASTING
213	PT	19+78.04	20.00' LT.	866.28	489417.46	833432.19
214	PC	18+29.35	18.95' RT.	869.53	489462.20	833286.89
215	MID PT.	18+38.33	19.24' RT.	869.24	489457.66	833294.45
216	PT/PC	18+47.32	19.37' RT.	868.97	489453.20	833302.04
217	MID PT.	18+58.15	22.25' RT.	868.83	489445.37	833309.77
218	PT	18+66.14	30.03' RT.	868.71	489434.71	833312.47
219	PC	19+03.56	41.86' RT.	867.93	489405.54	833336.78
220	MID PT.	19+03.05	25.29' RT.	867.74	489419.70	833345.41
221	PT	19+17.13	16.08' RT.	867.53	489419.77	833361.99
222	BEND PT.	20+24.93	11.00' RT.	865.91	489367.13	833457.22
223	PC	20+94.69	11.00' RT.	864.89	489332.17	833517.59
224	MID PT.	21+08.44	17.38' RT.	865.13	489319.76	833526.28
225	PT	21+12.44	31.99' RT.	865.61	489305.10	833522.42

CURB & GUTTER STAKING INFORMATION						
POINT NUMBER	DESCRIPTION	STATION	OFFSET	ELEVATION	NORTHING	EASTING
226	PC	21+34.39	24.92' RT.	864.92	489300.23	833544.96
227	MID PT.	21+40.23	14.94' RT.	864.61	489305.94	833555.02
228	PT	21+51.10	11.00' RT.	864.08	489303.89	833566.40
229	BEGIN C&G	18+38.11	0.13' RT.	869.63	489474.42	833303.62
230	END C&G	18+55.11	0.20' RT.	869.14	489465.90	833318.33
231	BEGIN C&G	18+38.00	8.13' RT.	869.47	489467.50	833299.61
232	END C&G	18+55.14	8.20' RT.	868.98	489458.98	833314.32
233	BEGIN C&G	19+00.00	0.00' .	868.13	489442.55	833356.66
234	PC	19+13.92	0.00' .	867.90	489434.90	833368.30
235	MID PT.	19+16.58	2.54' RT.	867.81	489431.32	833369.09
236	PT	19+14.15	5.29' RT.	867.79	489430.38	833365.54
237	BEGIN C&G	19+01.42	6.27' RT.	867.98	489436.51	833354.44



CURB & GUTTER RADIUS STAKING INFORMATION					
POINT NUMBER	RADIUS	STATION	OFFSET	NORTHING	EASTING
2A	14.00'	18+46.18	35.00' LT.	489500.92	833328.11
2B	15.00'	18+98.54	36.00' LT.	489473.59	833374.94
2C	20.00'	18+47.19	40.37' RT.	489435.05	833291.48
2D	16.00'	19+18.65	33.01' RT.	489404.89	833353.77
2E	17.00'	20+94.69	29.00' RT.	489316.59	833508.56
2F	16.00'	21+51.10	28.00' RT.	489289.18	833557.88
2G	3.00'	18+42.07	4.17' RT.	489468.96	833305.08
2H	3.00'	18+51.11	4.21' RT.	489464.45	833312.87
2I	2.65' (FLANGE)	19+13.92	2.65' RT.	489432.70	833366.83



PROJECT NO: 5992-10-16

HWY: ATWOOD AVENUE

COUNTY: DANE

PAVING DETAILS

SHEET

E

CURB & GUTTER STAKING INFORMATION						
POINT NUMBER	DESCRIPTION	STATION	OFFSET	ELEVATION	NORTHING	EASTING
300	PC	23+70.37	20.15' LT.	858.16	489220.71	833771.85
301	MID PT.	23+84.47	25.78' LT.	857.37	489218.37	833786.84
302	PT	23+91.09	39.45' LT.	856.92	489226.74	833799.51
303	BEND PT.	23+91.64	46.27' LT.	856.55	489232.32	833803.46
304	PC	24+17.26	43.83' LT.	856.34	489217.17	833824.25
305	MID PT.	24+22.68	27.62' LT.	856.49	489200.45	833820.65
306	PT	24+38.36	20.81' LT.	856.09	489186.60	833830.67
307	BEND PT.	24+57.94	21.00' LT.	855.49	489176.79	833847.60
308	PC	25+94.10	21.00' LT.	852.02	489108.63	833965.24
309	MID PT.	26+59.62	21.46' LT.	851.09	489077.40	834021.97
310	PT	27+25.33	21.96' LT.	850.65	489048.69	834080.00
311	PC	23+53.78	11.00' RT.	858.95	489202.30	833741.78
312	MID PT.	23+65.96	17.68' RT.	858.83	489190.42	833748.76
313	PT	23+66.47	31.45' RT.	859.27	489178.31	833742.18
314	PC	23+78.45	60.89' RT.	860.83	489146.88	833737.47
315	MID PT.	24+08.82	29.06' RT.	857.64	489158.77	833779.82
316	PT	24+50.48	19.31' RT.	855.94	489145.92	833820.64
317	PC	25+16.96	23.59' RT.	853.70	489108.72	833876.14

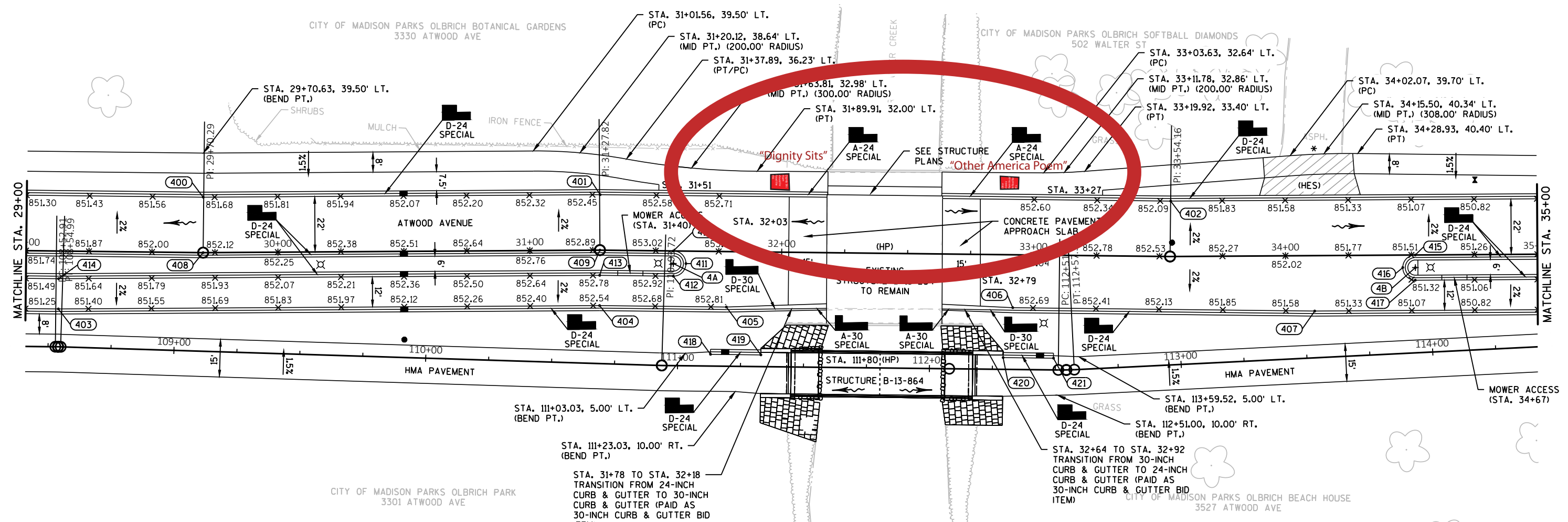
CURB & GUTTER STAKING INFORMATION						
POINT NUMBER	DESCRIPTION	STATION	OFFSET	ELEVATION	NORTHING	EASTING
318	MID PT.	26+02.04	25.90' RT.	851.78	489064.07	833948.60
319	PT	26+85.80	23.88' RT.	850.80	489025.09	834024.25
320	PC	26+81.31	49.05' RT.	851.24	489004.78	834008.69
321	MID PT.	26+75.04	73.52' RT.	851.44	488986.04	833991.66
322	PT	26+60.48	93.65' RT.	851.64	488975.36	833968.70
323	PC	26+37.08	116.16' RT.	851.90	488967.49	833935.96
324	MID PT.	26+22.44	121.97' RT.	852.12	488970.12	833919.33
325	PT/PC	26+06.31	112.90' RT.	852.60	488986.62	833908.74
326	MID PT.	26+04.26	111.97' RT.	852.65	488988.48	833907.37
327	PT/PC	26+02.11	112.81' RT.	852.68	488988.83	833905.09
328	PT	26+39.52	143.51' RT.	851.42	488942.25	833925.10
329	PC	26+74.06	110.19' RT.	851.29	488953.97	833973.84
330	MID PT.	26+94.20	82.38' RT.	851.19	488968.97	834005.59
331	PT	27+02.69	48.40' RT.	851.10	488995.42	834028.69
332	PC	27+42.63	0.00' .	851.06	489021.51	834086.20
333	MID PT.	27+37.13	5.50' RT.	850.95	489018.86	834078.89
334	PT	27+42.63	11.00' RT.	850.78	489011.54	834081.54

CURB & GUTTER RADIUS STAKING INFORMATION					
POINT NUMBER	RADIUS	STATION	OFFSET	NORTHING	EASTING
3A	20.00'	23+70.16	41.15' LT.	489238.88	833782.37
3B	20.00'	24+38.16	41.81' LT.	489204.77	833841.20
3C	13.00'	23+53.78	25.00' RT.	489190.19	833734.76
3D	75.00'	24+46.28	95.19' RT.	489082.78	833778.33
3E	62.00'/88.00'	26+19.34	46.30' RT.	489037.59	833953.74
3F	20.00'	26+23.17	99.98' RT.	488988.88	833930.82
3G	5.00'	26+04.20	114.97' RT.	488985.92	833905.82
3H	4.50'	27+42.63	5.50' RT.	489016.53	834083.87

CURB & GUTTER STAKING INFORMATION						
POINT NUMBER	DESCRIPTION	STATION	OFFSET	ELEVATION	NORTHING	EASTING
400	BEND PT.	29+70.48	22.00' LT.	851.66	488945.06	834301.56
401	BEND PT.	31+27.82	22.00' LT.	852.47	488880.80	834445.44
402	BEND PT.	33+54.55	22.00' LT.	852.04	488784.84	834650.60
403	BEND PT.	29+13.09	23.00' RT.	851.32	488928.45	834230.86
404	BEND PT.	31+27.56	22.00' RT.	852.56	488840.83	834427.05
405	BEND PT.	31+78.28	22.00' RT.	852.84	488819.50	834472.64
406	BEND PT.	32+91.96	21.00' RT.	852.78	488772.24	834576.04
407	BEND PT.	34+11.46	22.00' RT.	851.46	488721.46	834684.62
408	BEND PT.	29+70.29	0.00' .	852.10	488925.05	834292.42

CURB & GUTTER STAKING INFORMATION						
POINT NUMBER	DESCRIPTION	STATION	OFFSET	ELEVATION	NORTHING	EASTING
409	BEND PT.	31+27.82	0.00' .	852.91	488860.81	834436.26
410	PC	31+56.97	0.00' LT.	853.06	488848.46	834462.66
411	MID PT.	31+62.01	4.96' RT.	853.01	488841.83	834465.12
412	PT	31+57.05	10.00' RT.	852.96	488839.37	834458.49
413	BEND PT.	31+27.67	10.00' RT.	852.80	488851.74	834432.04
414	BEND PT.	29+12.98	11.00' RT.	851.56	488939.37	834235.85
415	PC	34+51.53	0.00' .	851.50	488725.20	834730.18
416	MID PT.	34+46.53	4.96' RT.	851.56	488722.72	834723.59
417	PT	34+51.44	10.00' RT.	851.30	488716.11	834726.02

CURB & GUTTER RADIUS STAKING INFORMATION					
POINT NUMBER	RADIUS	STATION	OFFSET	NORTHING	EASTING
4A	4.00'	31+57.01	5.00' RT.	488843.91	834460.58
4B	4.00'	34+51.53	5.00' RT.	488720.64	834728.14



CURB & GUTTER STAKING INFORMATION						
POINT NUMBER	DESCRIPTION	STATION	OFFSET	ELEVATION	NORTHING	EASTING
418	BEGIN C&G	111+13.03	4.67' LT.	854.83	488805.03	834459.12
419	END C&G	111+33.03	4.67' LT.	854.97	488796.56	834477.24
420	BEGIN C&G	112+29.20	4.67' LT.	854.96	488755.81	834564.35
421	END C&G	112+49.20	4.67' LT.	854.81	488747.34	834582.46

CURB & GUTTER STAKING INFORMATION						
POINT NUMBER	DESCRIPTION	STATION	OFFSET	ELEVATION	NORTHING	EASTING
500	BEND PT.	36+23.49	22.00' LT.	849.50	488675.09	834896.34
501	BEND PT.	35+65.93	22.00' RT.	849.93	488658.46	834825.66
502	PC	39+32.87	23.00' RT.	850.78	488503.16	835157.69
503	MID PT.	39+67.56	23.30' RT.	851.01	488488.19	835188.98
504	PT	40+02.25	24.21' RT.	851.24	488472.67	835220.02
505	BEGIN C&G	37+02.85	45.00' RT.	849.86	488580.69	834940.01
506	BEGIN C&G	37+30.85	45.00' RT.	850.00	488568.82	834965.37
507	BEND PT.	36+23.49	0.00' .	849.94	488655.08	834887.19

CURB & GUTTER STAKING INFORMATION						
POINT NUMBER	DESCRIPTION	STATION	OFFSET	ELEVATION	NORTHING	EASTING
508	PC	36+85.27	0.00' .	849.73	488628.90	834943.15
509	MID PT.	36+90.77	5.50' RT.	849.79	488621.59	834945.80
510	PT	36+85.27	11.00' RT.	849.71	488618.94	834938.49
511	BEND PT.	35+66.03	10.00' RT.	850.17	488669.38	834830.65
512	PC	39+67.87	0.00' .	851.47	488509.16	835199.14
513	MID PT.	39+62.38	5.40' RT.	851.41	488506.60	835191.87
514	PT	39+67.68	11.00' RT.	851.34	488499.28	835194.31

CURB & GUTTER RADIUS STAKING INFORMATION					
POINT NUMBER	RADIUS	STATION	OFFSET	NORTHING	EASTING
5A	4.50'	36+85.27	5.50' RT.	488623.92	834940.82
5B	4.50'	39+67.87	5.50' RT.	488504.18	835196.81

