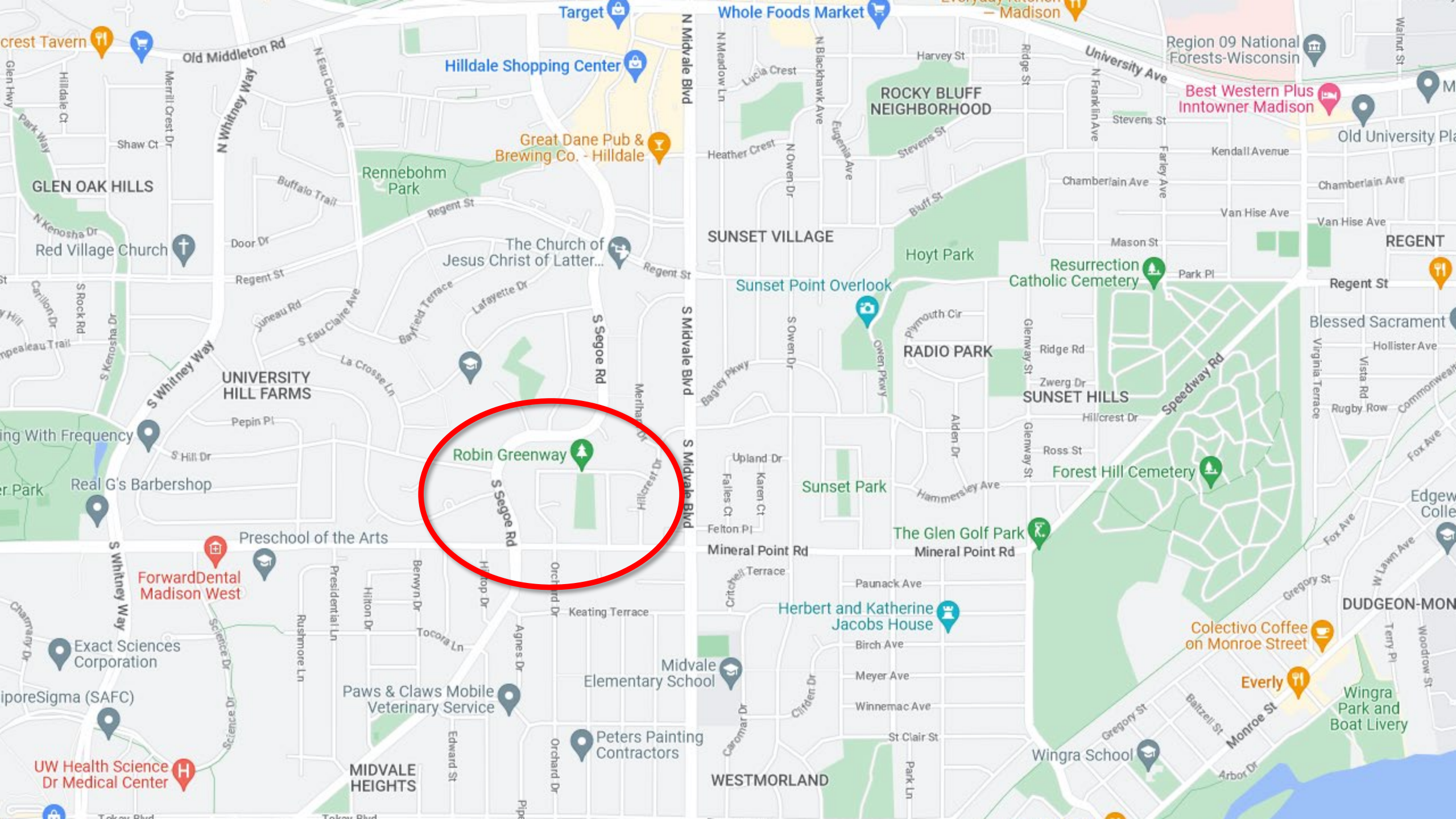




Robin Greenway & Orchard Drive Culvert





Background

- June 2022 Storm
 - Trees in Robin Greenway fell, causing service outages, damages to houses
 - Utility companies removed trees under their emergency protocols to restore service
 - Removals caused significant erosion
- Culvert undersized and failing, needs to be replaced
- Unstable slopes in narrow culvert ditch

Image x – Monday June 13,
looking S from Gregg Rd, at
entrance to Greenway

Image and map sent
to City by Jeff
Jambois

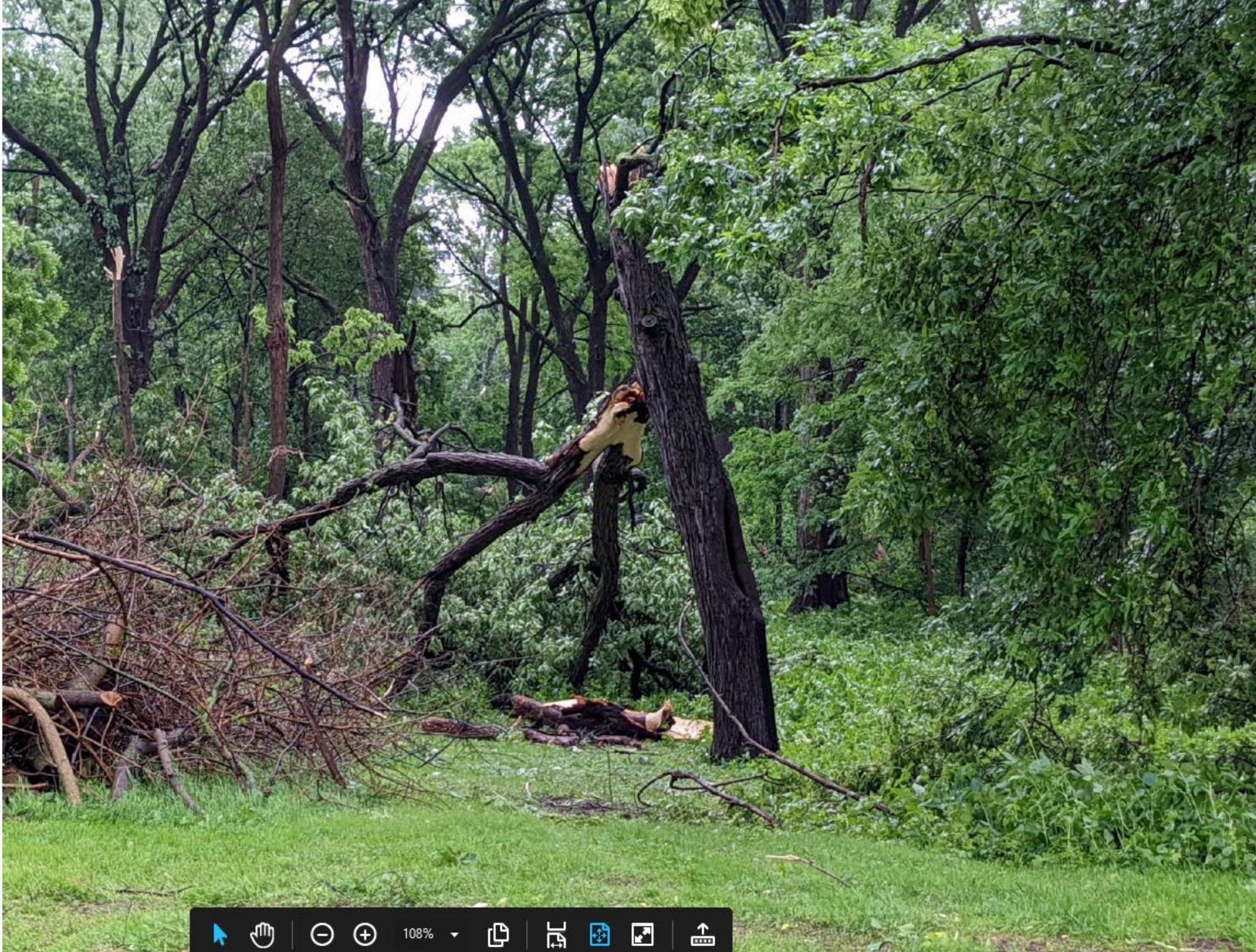


Image x – Wednesday June 16,
looking E from within
Greenway

Image and map sent
to City by Jeff
Jambois

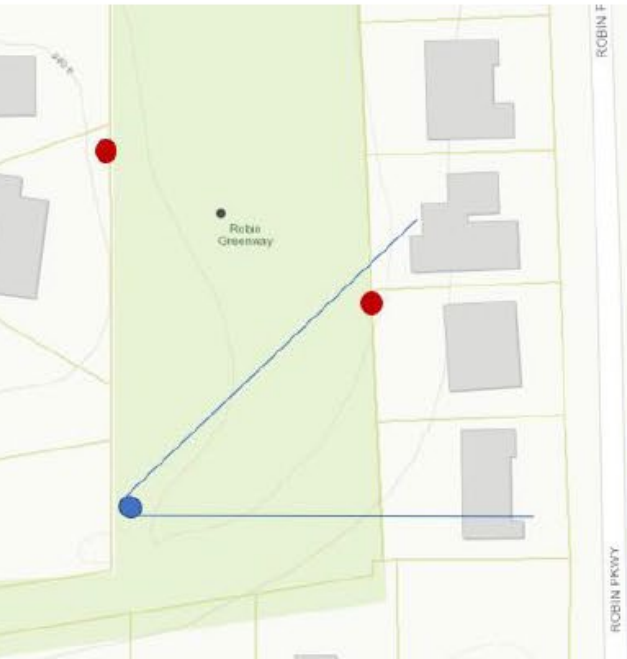
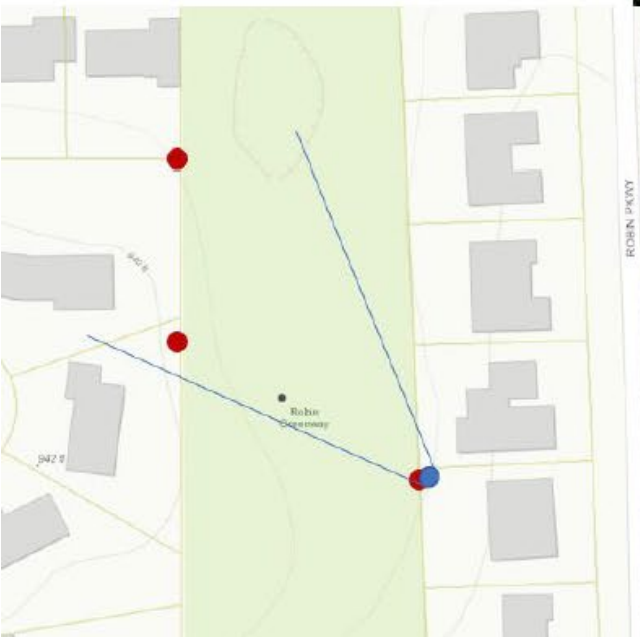


Image x – Thursday July 7,
looking NW from 318 Robin
Parkway

This is the first major rain
event since City Engineering
left the Greenway

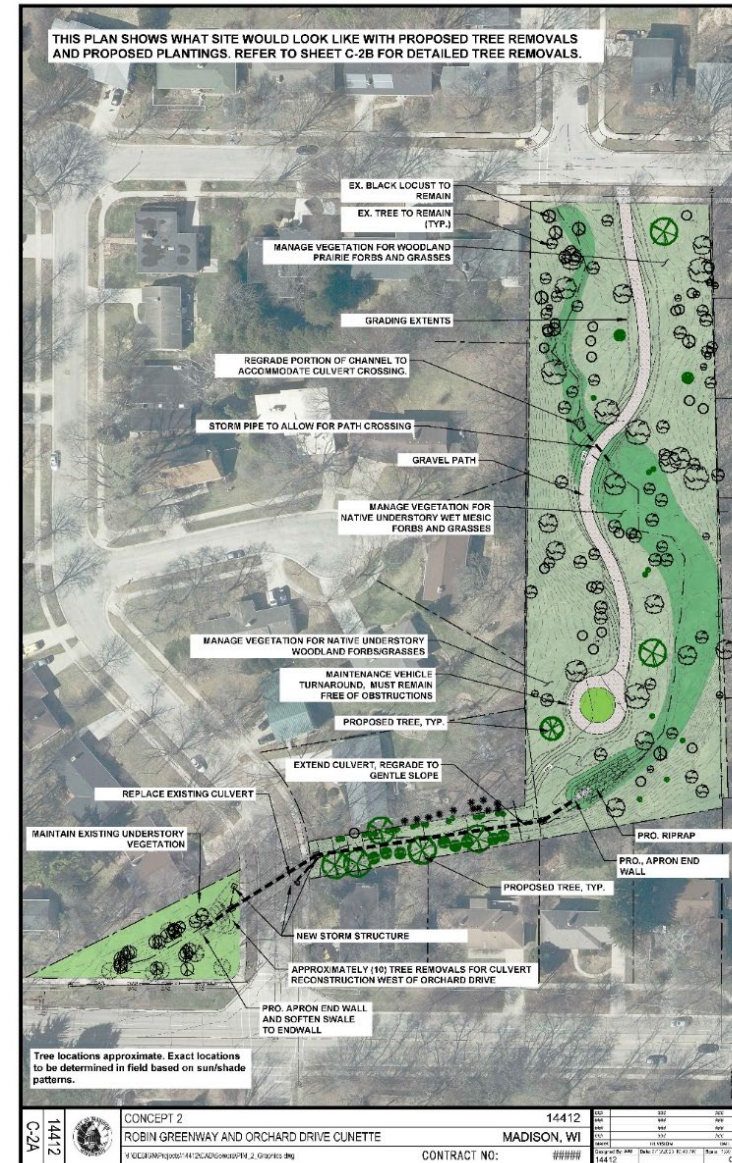
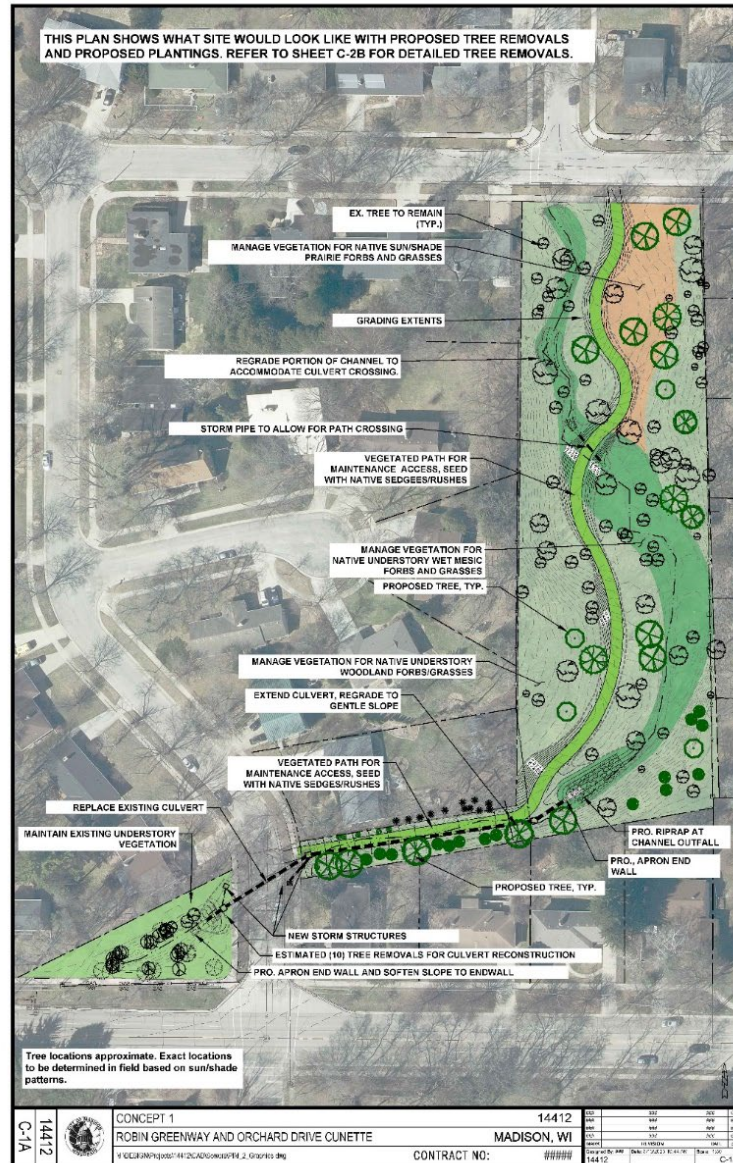
Image and map sent
to City by Jeff
Jambois



Public Engagement

- January 2023 – Certified arborist evaluation, topographic survey
- February 9th 2023 PIM 1 – Listening Session and Public Feedback
 - Mailed notice to ~ 800 residents, listed on website, sent to subscribers of Robin Greenway updates, sent to alder
 - 13 Live Online Polling Questions & Breakout Rooms and Report Back
- March 14th 2023, PIM 2 – In Person Meeting Presentation of Two Concepts
 - Mailed notice to ~ 800 residents, listed on website, sent to subscribers of Robin Greenway updates, sent to alder
 - Presentation of Two Concepts Based on Feedback from One & Design Workshop in Groups iClicker Polling Question “Check in” from PIM 1 to see if opinions have changed
- April 11th, 2023, In – Person Walkthrough Presentation of Final Concept
 - Coordinated with neighborhood volunteer, sent to alder, listed on website, sent to subscribers of Robin Greenway updates
- May 9th, 2023 – Habitat Stewardship Subcommittee Public Hearing on Tree Removals
 - Mailed plan to ~ 800 residents and hearing notification. No public attendees.
 - Based on HSS comments, added additional bitternut trees, buttonbush shrubs, blackhaw viburnum shrubs, and removed planting of American hophornbeam

Feedback from PIM 1 to Develop Two Concepts for Different Options that Reflect Priorities presented on March 14th3



Feedback from PIM 2 to Develop Final Concept Presented on April 11th



