

Madison, Wisconsin

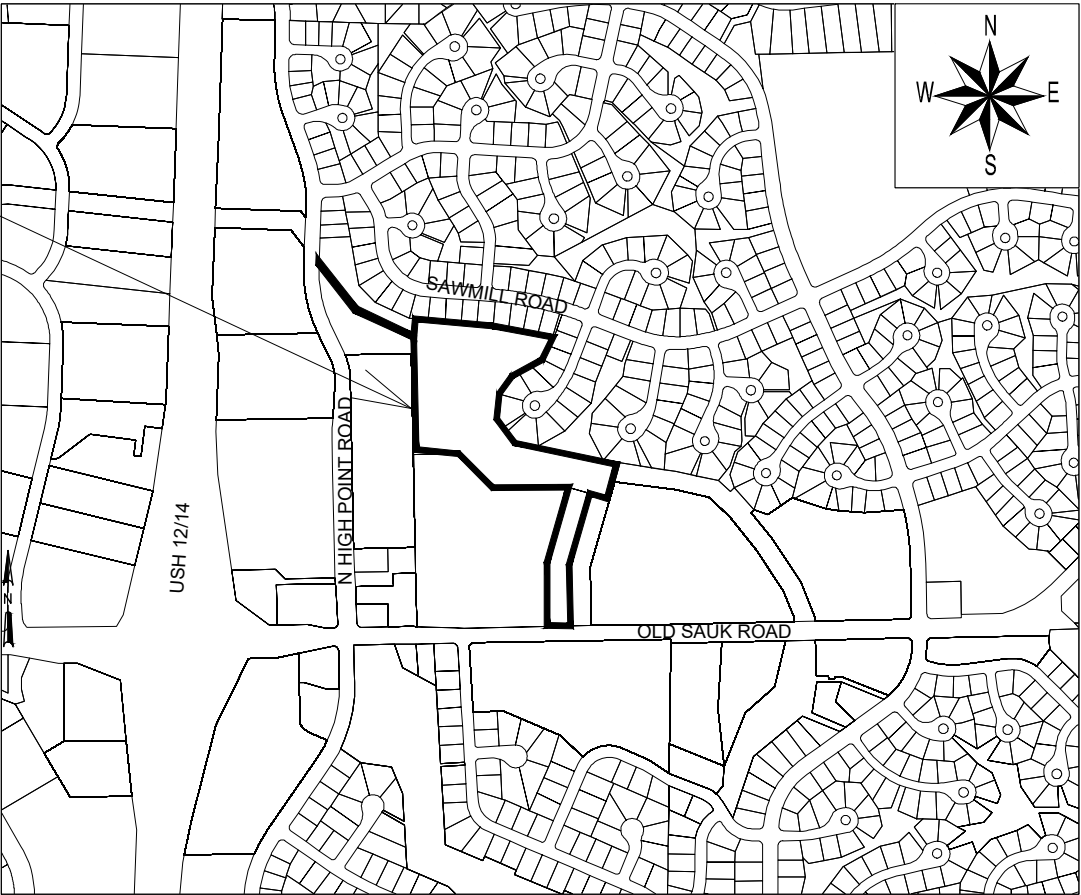
CITY OF MADISON
CITY ENGINEERING DIVISION
DEPARTMENT OF PUBLIC WORKS
PLAN OF PROPOSED IMPROVEMENT
WEXFORD POND DREDGING

90% DRAWINGS

INDEX OF SHEETS

SHEET NO. 1	TITLE SHEET
SHEET NO. 2	GENERAL NOTES AND LEGEND
SHEET NO. 3-4	CONSTRUCTION DETAILS
SHEET NO. 5	EXISTING CONDITIONS
SHEET NO. 6-8	EROSION CONTROL AND GRADING PLAN
SHEET NO. 9	OUTFALL PIPE PROFILES
SHEET NO. 10-12	RESTORATION PLAN
SHEET NO. 13	CONSTRUCTION ACCESS PLAN
SHEET NO. 14-15	VEGETATED ACCESS PLAN AND PROFILE
SHEET NO. 16-17	POND CROSS SECTIONS
SHEET NO. 18-21	VEGETATED ACCESS CROSS SECTIONS

PROJECT
LOCATION



PUBLIC IMPROVEMENT PROJECT
APPROVED

APPROVED DATE

BY THE COMMON COUNCIL
OF MADISON, WISCONSIN

PUBLIC IMPROVEMENT DESIGN
APPROVED BY:

City Engineer

Date

POND & STORM
DESIGNED BY:



SERIES 1 - EROSION CONTROL

- | | |
|------|--------------------------------------|
| 1.01 | SILT FENCE |
| 1.02 | EROSION MAT |
| 1.05 | CLEAR STONE BERM FOR EROSION CONTROL |
| 1.07 | CONSTRUCTION ENTRANCE |
| 1.11 | RIGID FRAME INLET PROTECTION |

SERIES 5 - SEWER AND SEWER STRUCTURES

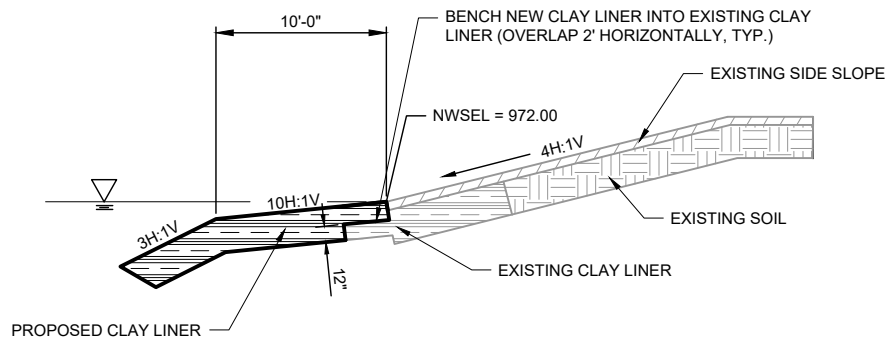
- | | |
|--------|--|
| 5.1.3 | TYPICAL SECTION SAS ACCESS ROAD TEMPORARY |
| 5.2.3 | TYPICAL TRENCH COMPACTION (GREENWAY/PARK) |
| 5.6.1 | RCP AE GATE |
| 5.7.5 | STORM SEWER PRECAST SAS (THROUGH SECTION VIEW) |
| 5.7.6 | STORM SEWER PRECAST SAS (TOP VIEW) |
| 5.7.15 | SAS CHIMNEY AND CASTING |
| 5.7.16 | SAS FRAME AND COVER |

LEGEND

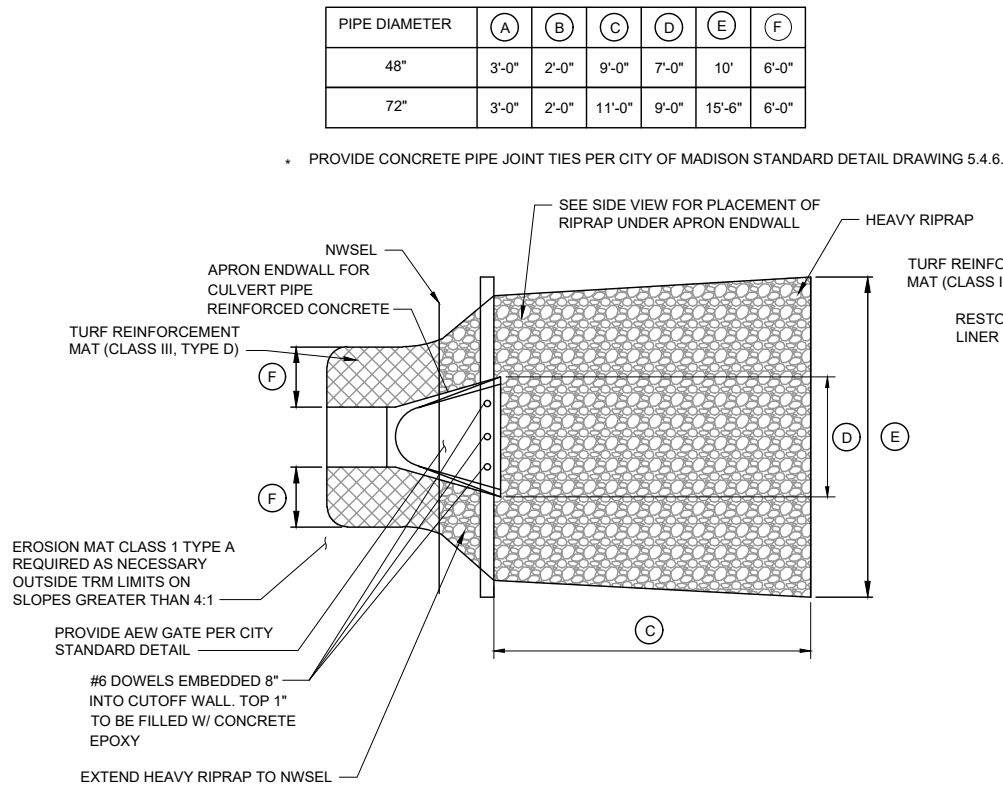
EXISTING

PROPOSED

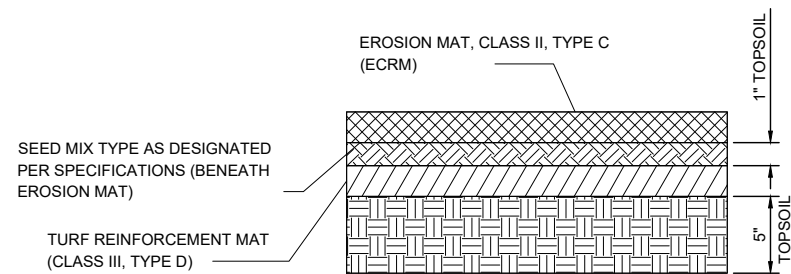
Symbol	Description	Symbol	Description
	EXISTING RIGHT OF WAY		PROPOSED GAS LINE
	EXISTING GAS LINE		PROPOSED SANITARY SEWER
	EXISTING SANITARY SEWER		PROPOSED WATER MAIN
	EXISTING WATER MAIN		PROPOSED WATER MAIN W/ CASING
	EXISTING STORM SEWER		PROPOSED STORM SEWER
	EXISTING TELEPHONE LINE		PROPOSED TELEPHONE LINE
	EXISTING UNDERGROUND ELECTRIC LINE		PROPOSED UNDERGROUND ELECTRIC LINE
	EXISTING OVERHEAD ELECTRIC LINE		PROPOSED FIBER OPTIC LINE
	EXISTING FIBER OPTIC LINE		PROPOSED FENCE
	EXISTING FENCE		PROPOSED SILT FENCE
	CONTROL POINT		PROPOSED SHEET PILING
	EXISTING BENCHMARK		PROPOSED INLET PROTECTION
	SOIL BORING		PROPOSED END CAP
	EXISTING DECIDUOUS/CONIFEROUS TREE		PROPOSED WATER VALVE
	EXISTING TREE STUMP		PROPOSED FIRE HYDRANT
	EXISTING MANHOLE		PROPOSED SANITARY SEWER MANHOLE
	EXISTING INLET		PROPOSED STORM SEWER MANHOLE
	EXISTING CATCH BASIN		PROPOSED INLET
	EXISTING POWER POLE		FUTURE PROJECT BY OTHERS
	EXISTING LIGHT POLE		MAJOR CONTOUR
	EXISTING GAS VALVE		MINOR CONTOUR
	EXISTING SIGN		CULVERT
	EXISTING WATER VALVE		
	EXISTING WATER MANHOLE		
	EXISTING FIRE HYDRANT		
	WETLAND DELINEATION		
	WETLAND BUFFER		
	APRON END WALL		
	IRON PIPE		
	PROPERTY LINE		
	MAINTENANCE PATH		
	FUTURE MUTLI-USE PATH		
	EXISTING SAND BAGS		



CLAY LINER CONNECTION DETAIL
NO SCALE



CONCRETE APRON ENDWALL & FIELD STONE RIPRAP
NO SCALE



- NOTE:
1. TOPSOIL CAN BE EXISTING TOPSOIL OR PARTIALLY NEW/PARTIALLY EXISTING.
 2. SEE DRAWINGS AND CROSS SECTIONS FOR LOCATIONS AND USE.


TURF REINFORCEMENT MAT (TRM) SYSTEM
NO SCALE

PIPE DIAMETER	(A)	(B)	(C)	(D)	(E)	(F)
48"	3'-0"	2'-0"	9'-0"	7'-0"	10'	6'-0"
72"	3'-0"	2'-0"	11'-0"	9'-0"	15'-6"	6'-0"

- PROVIDE CONCRETE PIPE JOINT TIES PER CITY OF MADISON STANDARD DETAIL DRAWING 5.4.6.

NOTE: ALL EXISTING ELEMENTS
TO REMAIN SHALL BE PROTECTED
BY CONTRACTOR.



<div><div><div>12750</div><div>5</div></div><div></div></div>	S:\MAD\1000--1099\1020\126\Drawings\CAD\Civil 3d\Sheets\Plan\Pond Sheets 7.22.22.dwg										
	CONTRACT NO: 8876										
	CITY OF MADISON										
	EXISTING CONDITIONS										
	12750										
	###	###	###	###	###	###	###	###	###	###	###
	###	###	###	###	###	###	###	###	###	###	###
	###	###	###	###	###	###	###	###	###	###	###
	###	###	###	###	###	###	###	###	###	###	###
	###	###	###	###	###	###	###	###	###	###	###
S:\MAD\1000--1099\1020\126\Drawings\CAD\Civil 3d\Sheets\Plan\Pond Sheets 7.22.22.dwg											
CONTRACT NO: 8876											
CITY OF MADISON											
EXISTING CONDITIONS											
12750											
###	###	###	###	###	###	###	###	###	###	###	
###	###	###	###	###	###	###	###	###	###	###	
###	###	###	###	###	###	###	###	###	###	###	
###	###	###	###	###	###	###	###	###	###	###	
S:\MAD\1000--1099\1020\126\Drawings\CAD\Civil 3d\Sheets\Plan\Pond Sheets 7.22.22.dwg											
CONTRACT NO: 8876											
CITY OF MADISON											
EXISTING CONDITIONS											
12750											
###	###	###	###	###	###	###	###	###	###	###	
###	###	###	###	###	###	###	###	###	###	###	
###	###	###	###	###	###	###	###	###	###	###	
###	###	###	###	###	###	###	###	###	###	###	
S:\MAD\1000--1099\1020\126\Drawings\CAD\Civil 3d\Sheets\Plan\Pond Sheets 7.22.22.dwg											
CONTRACT NO: 8876											
CITY OF MADISON											
EXISTING CONDITIONS											
12750											
###	###	###	###	###	###	###	###	###	###	###	
###	###	###	###	###	###	###	###	###	###	###	
###	###	###	###	###	###	###	###	###	###	###	
###	###	###	###	###	###	###	###	###	###	###	
S:\MAD\1000--1099\1020\126\Drawings\CAD\Civil 3d\Sheets\Plan\Pond Sheets 7.22.22.dwg											
CONTRACT NO: 8876											
CITY OF MADISON											
EXISTING CONDITIONS											
12750											
###	###	###	###	###	###	###	###	###	###	###	
###	###	###	###	###	###	###	###	###	###	###	
###	###	###	###	###	###	###	###	###	###	###	
###	###	###	###	###	###	###	###	###	###	###	
S:\MAD\1000--1099\1020\126\Drawings\CAD\Civil 3d\Sheets\Plan\Pond Sheets 7.22.22.dwg											
CONTRACT NO: 8876											
CITY OF MADISON											
EXISTING CONDITIONS											
12750											
###	###	###	###	###	###	###	###	###	###	###	
###	###	###	###	###	###	###	###	###	###	###	
###	###	###	###	###	###	###	###	###	###	###	
###	###	###	###	###	###	###	###	###	###	###	
S:\MAD\1000--1099\1020\126\Drawings\CAD\Civil 3d\Sheets\Plan\Pond Sheets 7.22.22.dwg											
CONTRACT NO: 8876											
CITY OF MADISON											
EXISTING CONDITIONS											
12750											
###	###	###	###	###	###	###	###	###	###	###	
###	###	###	###	###	###	###	###	###	###	###	
###	###	###	###	###	###	###	###	###	###	###	
###	###	###	###	###	###	###	###	###	###	###	
S:\MAD\1000--1099\1020\126\Drawings\CAD\Civil 3d\Sheets\Plan\Pond Sheets 7.22.22.dwg											
CONTRACT NO: 8876											
CITY OF MADISON											
EXISTING CONDITIONS											
12750											
###	###	###	###	###	###	###	###	###	###	###	
###	###	###	###	###	###	###	###	###	###	###	
###	###	###	###	###	###	###	###	###	###	###	
###	###	###	###	###	###	###	###	###	###	###	
S:\MAD\1000--1099\1020\126\Drawings\CAD\Civil 3d\Sheets\Plan\Pond Sheets 7.22.22.dwg											
CONTRACT NO: 8876											
CITY OF MADISON											
EXISTING CONDITIONS											
12750											
###	###	###	###	###	###	###	###	###	###	###	
###	###	###	###	###	###	###	###	###	###	###	
###	###	###	###	###	###	###	###	###	###	###	
###	###	###	###	###	###	###	###	###	###	###	
S:\MAD\1000--1099\1020\126\Drawings\CAD\Civil 3d\Sheets\Plan\Pond Sheets 7.22.22.dwg											
CONTRACT NO: 8876											
CITY OF MADISON											
EXISTING CONDITIONS											
12750											
###	###	###	###	###	###	###	###	###	###	###	
###	###	###	###	###	###	###	###	###	###	###	
###	###	###	###	###	###	###	###	###	###	###	
###	###	###	###	###	###	###	###	###	###	###	
S:\MAD\1000--1099\1020\126\Drawings\CAD\Civil 3d\Sheets\Plan\Pond Sheets 7.22.22.dwg											
CONTRACT NO: 8876											
CITY OF MADISON											
EXISTING CONDITIONS											
12750											
###	###	###	###	###	###	###	###	###	###	###	
###	###	###	###	###	###	###	###	###	###	###	
###	###	###	###	###	###	###	###	###	###	###	
###	###	###	###	###	###	###	###	###	###	###	
S:\MAD\1000--1099\1020\126\Drawings\CAD\Civil 3d\Sheets\Plan\Pond Sheets 7.22.22.dwg											
CONTRACT NO: 8876											
CITY OF MADISON											
EXISTING CONDITIONS											
12750											
###	###	###	###	###	###	###	###	###	###	###	
###	###	###	###	###	###	###	###	###	###	###	
###	###	###	###	###	###	###	###	###	###	###	
###	###	###	###	###	###	###	###	###	###	###	
S:\MAD\1000--1099\1020\126\Drawings\CAD\Civil 3d\Sheets\Plan\Pond Sheets 7.22.22.dwg											
CONTRACT NO: 8876											
CITY OF MADISON											
EXISTING CONDITIONS											
12750											
###	###	###	###	###	###	###	###	###	###	###	
###	###	###	###	###	###	###	###	###	###	###	
###	###	###	###	###	###	###	###	###	###	###	
###	###	###	###	###	###	###	###	###	###	###	
S:\MAD\1000--1099\1020\126\Drawings\CAD\Civil 3d\Sheets\Plan\Pond Sheets 7.22.22.dwg											
CONTRACT NO: 8876											
CITY OF MADISON											
EXISTING CONDITIONS											
12750											
###	###	###	###	###	###	###	###	###	###	###	
###	###	###	###	###	###	###	###	###	###	###	
###	###	###	###	###	###	###	###	###	###	###	
###	###	###	###	###	###	###	###	###	###	###	
S:\MAD\1000--1099\1020\126\Drawings\CAD\Civil 3d\Sheets\Plan\Pond Sheets 7.22.22.dwg											
CONTRACT NO: 8876											
CITY OF MADISON											
EXISTING CONDITIONS											
12750											
###	###	###	###	###	###	###	###	###	###	###	
###	###	###	###	###	###	###	###	###	###	###	
###	###	###	###	###	###	###	###	###	###	###	
###	###	###	###	###	###	###	###	###	###	###	
S:\MAD\1000--1099\1020\126\Drawings\CAD\Civil 3d\Sheets\Plan\Pond Sheets 7.22.22.dwg											
CONTRACT NO: 8876											
CITY OF MADISON											
EXISTING CONDITIONS											
12750											
###	###	###	###	###	###	###	###	###	###	###	
###	###	###	###	###	###	###	###	###	###	###	
###	###	###	###	###	###	###	###	###	###	###	
###	###	###	###	###	###	###	###	###	###	###	
S:\MAD\1000--1099\1020\126\Drawings\CAD\Civil 3d\Sheets\Plan\Pond Sheets 7.22.22.dwg											
CONTRACT NO: 8876											
CITY OF MADISON											
EXISTING CONDITIONS											
12750											
###	###	###	###	###	###	###	###	###	###	###	
###	###	###	###	###	###	###	###	###	###	###	
###	###	###	###	###	###	###	###	###	###	###	
###	###	###	###	###	###	###	###	###	###	###	
S:\MAD\1000--1099\1020\126\Drawings\CAD\Civil 3d\Sheets\Plan\Pond Sheets 7.22.22.dwg											
CONTRACT NO: 8876											
CITY OF MADISON											
EXISTING CONDITIONS											
12750											
###	###	###	###	###	###	###	###	###	###	###	
###	###	###	###	###	###	###	###	###	###	###	
###	###	###	###	###	###	###	###	###	###	###	
###	###	###	###	###	###	###	###	###	###	###	
S:\MAD\1000--1099\1020\126\Drawings\CAD\Civil 3d\Sheets\Plan\Pond Sheets 7.22.22.dwg											
CONTRACT NO: 8876											
CITY OF MADISON											
EXISTING CONDITIONS											
12750											
###	###	###	###	###	###	###	###	###	###	###	
###	###	###	###	###	###	###	###	###	###	###	
###	###	###	###	###	###	###	###	###	###	###	
###	###	###	###	###	###	###	###	###	###	###	
S:\MAD\1000--1099\1020\126\Drawings\CAD\Civil 3d\Sheets\Plan\Pond Sheets 7.22.22.dwg											
CONTRACT NO: 8876											
CITY OF MADISON											
EXISTING CONDITIONS											
12750											
###	###	###	###	###	###	###	###	###	###	###	
###	###	###	###	###	###	###	###	###	###	###	
###	###	###	###	###	###	###	###	###	###	###	
###	###	###	###	###	###	###	###	###	###	###	
S:\MAD\1000--1099\1020\126\Drawings\CAD\Civil 3d\Sheets\Plan\Pond Sheets 7.22.22.dwg											
CONTRACT NO: 8876											
CITY OF MADISON											
EXISTING CONDITIONS											
12750											
###	###	###	###	###	###	###	###	###	###	###	
###	###	###	###	###	###	###	###	###	###	###	
###	###	###	###	###	###	###	###	###	###	###	
###	###	###	###	###	###	###	###	###	###	###	
S:\MAD\1000--1099\1020\126\Drawings\CAD\Civil 3d\Sheets\Plan\Pond Sheets 7.22.22.dwg											
CONTRACT NO: 8876											
CITY OF MADISON											
EXISTING CONDITIONS											
12750											
###	###	###	###	###	###	###	###	###	###	###	
###	###	###	###	###	###	###	###	###	###	###	
###	###	###	###	###	###	###	###	###	###	###	
###	###	###	###	###	###	###	###	###	###	###	
S:\MAD\1000--1099\1020\126\Drawings\CAD\Civil 3d\Sheets\Plan\Pond Sheets 7.22.22.dwg											
CONTRACT NO: 8876											
CITY OF MADISON											
EXISTING CONDITIONS											
12750											
###	###	###	###	###	###	###	###	###	###	###	
###	###	###	###	###	###	###	###	###	###	###	
###	###	###	###	###	###	###	###	###	###	###	
###	###	###	###	###	###	###	###	###	###	###	
S:\MAD\1000--1099\1020\126\Drawings\CAD\Civil 3d\Sheets\Plan\Pond Sheets 7.22.22.dwg											
CONTRACT NO: 8876											
CITY OF MADISON											
EXISTING CONDITIONS											
12750											
###	###	###	###	###	###	###	###	###	###	###	
###	###	###	###	###	###	###	###	###	###	###	
###	###	###	###	###	###	###	###	###	###	###	
###	###	###	###	###	###	###	###	###	###	###	
S:\MAD\1000--1099\1020\126\Drawings\CAD\Civil 3d\Sheets\Plan\Pond Sheets 7.22.22.dwg											
CONTRACT NO: 8876											
CITY OF MADISON											
EXISTING CONDITIONS											
12750											
###	###	###	###	###	###	###	###	###	###	###	
###	###	###	###	###	###	###	###	###	###	###	
###	###	###	###	###	###	###	###	###	###	###	
###	###	###	###	###	###	###	###	###	###	###	
S:\MAD\1000--1099\1020\126\Drawings\CAD\Civil 3d\Sheets\Plan\Pond Sheets 7.22.22.dwg											
CONTRACT NO: 8876											
CITY OF MADISON											
EXISTING CONDITIONS											
12750											
###	###	###	###	###	###	###	###	###	###	###	
###	###	###	###	###	###	###	###	###	###	###	
###	###	###	###	###	###	###	###	###	###	###	
###	###	###	###	###	###	###	###	###	###	###	
S:\MAD\1000--1099\1020\126\Drawings\CAD\Civil 3d\Sheets\Plan\Pond Sheets 7.22.22.dwg											
CONTRACT NO: 8876											
CITY OF MADISON											
EXISTING CONDITIONS											
12750											
###	###	###	###	###	###	###	###	###	###	###	
###	###	###	###	###	###	###	###	###	###	###	
###	###	###	###	###	###	###	###	###	###	###	
###	###	###	###	###	###	###	###	###	###	###	
S:\MAD\1000--1099\1020\126\Drawings\CAD\Civil 3d\Sheets\Plan\Pond Sheets 7.22.22.dwg											
CONTRACT NO: 8876											
CITY OF MADISON											
EXISTING CONDITIONS											
12750											
###	###	###	###	###	###	###	###	###	###	###	
###	###	###	###	###	###	###	###	###	###	###	
###	###	###	###	###	###	###	###	###	###	###	
###	###	###	###	###	###	###	###	###	###	###	
S:\MAD\1000--1099\1020\126\Drawings\CAD\Civil 3d\Sheets\Plan\Pond Sheets 7.22.22.dwg											
CONTRACT NO: 8876											
CITY OF MADISON											
EXISTING CONDITIONS											
12750											
###	###	###	###	###	###	###	###	###	###	###	
###	###	###	###	###	###	###	###	###	###	###	
###	###	###	###	###	###	###	###	###	###	###	
###	###	###	###	###	###	###	###	###	###	###	
S:\MAD\1000--1099\1020\126\Drawings\CAD\Civil 3d\Sheets\Plan\Pond Sheets 7.22.22.dwg											
CONTRACT NO: 8876											
CITY OF MADISON											
EXISTING CONDITIONS											

EROSION CONTROL NOTES:

1. EROSION CONTROL MEASURES SHALL BE IN PLACE PRIOR TO ANY OTHER CONSTRUCTION ACTIVITIES.
2. THE CONTRACTOR IS RESPONSIBLE FOR THE CONSTRUCTION AND MAINTENANCE OF ALL EROSION CONTROL MEASURES UNTIL FINAL ACCEPTANCE BY THE CITY OF MADISON.
3. THE CONTRACTOR SHALL INSTALL AND MAINTAIN EROSION CONTROL MEASURES IN ACCORDANCE WITH THE WDNr SOC STANDARDS AND CITY OF MADISON STANDARD SPECIFICATIONS.
4. THE CONTRACTOR SHALL PROVIDE STREET SWEEPING AS NEEDED ON A DAILY BASIS TO KEEP TRACKING TO A MINIMUM.
5. THE CONTRACTOR SHALL BE RESPONSIBLE FOR ALL STORM WATER CONTROL MEASURES NECESSARY TO MAINTAIN EXISTING CONVEYANCE CAPACITY THROUGHOUT THE SITE.
6. NO CONSTRUCTION MATERIALS OR STOCKPILES SHALL BE STORED IN THE CHANNELS OR POND. ALL TEMPORARY STOCKPILES SHALL BE SURROUNDED BY SILT SOCK AT NO ADDITIONAL COST.
7. DITCH CHECKS SHALL BE CONSTRUCTED IN THE CHANNEL AS SHOWN IN THE PLAN SET, OR AS DIRECTED BY THE CONSTRUCTION ENGINEER.
8. THE CONTRACTOR SHALL INSTALL SILT FENCE AS SHOWN IN THE PLAN SET, OR AT THE DIRECTION OF THE CONSTRUCTION ENGINEER.
9. ALL EROSION CONTROL MATTING SHALL BE OVERLAPPED SUCH THAT THE OVERLAP CORRESPONDS TO THE FLOW DIRECTION.
10. ADDITIONAL INLET PROTECTION MAY BE REQUIRED OUTSIDE THE LIMITS OF THIS SHEET.
11. THE CONTRACTOR SHALL BE AWARE THAT SILT FENCE, DITCH CHECKS, AND OTHER EROSION CONTROL MEASURES MAY BE PHASED, ACCORDING TO CONSTRUCTION SCHEDULE. SOME ITEMS MAY NEED TO BE INSTALLED OR REMOVED AS WORK PROGRESSES.
12. ALL SEED RESTORATION ON SLOPES >4:1 SHALL BE PROVIDED WITH EROSION MAT, CLASS 1, TYPE A - ORGANIC, UNLESS INDICATED OTHERWISE IN PLANS OR SPECIFICATIONS.

9 EA. - INLET PROTECTION AT INTERSECTION OF OLD SAUK ROAD AND NORTH HIGH POINT ROAD

PROTECT EXISTING RIPRAP. CONTRACTOR SHALL REPLACE DISTURBED RIPRAP AT EXISTING OUTFALLS AS NECESSARY (TYP.)

POND B

PROPERTY LINE (TYP.)

PROTECT EXISTING CONCRETE SPILLWAY

DELINEATED WETLAND (TYP.)

SILT FENCE (TYP.)

30-FOOT WIDE CONSTRUCTION EASEMENT. EQUIPMENT SHALL NOT BE TEMPORARILY STORED WITHIN THIS EASEMENT.

PROPOSED TEMPORARY ACCESS ROAD (TYP.). CONTRACTOR SHALL PROVIDE TEMPORARY GRADING AS NECESSARY AND RESTORE TO ORIGINAL GRADES AT PROJECT COMPLETION.

SILT FENCE (TYP.)

STONE TRACKING PAD (TYP.)

REMOVE AND REPLACE 6-FOOT WIDE SIDEWALK

REMOVE AND REPLACE 30-INCH CURB AND GUTTER

CONTRACTOR SHALL REMOVE AND REPLACE PAVEMENT AND BASE COURSE IN KIND AFTER COMPLETION OF THE PROJECT.

CONTRACTOR SHALL KEEP CHURCH PARKING LOT CLEAR OF MUD. SWEEPING SHALL OCCUR DAILY

REMOVE AND REPLACE SIDEWALK AND CONCRETE DRIVEWAY APRON AFTER COMPLETION OF CONSTRUCTION

CONTRACTOR SHALL REMOVE, SALVAGE, AND REPLACE EXISTING RETAINING WALL IN KIND

6 EA. INLET PROTECTION (TYP.)

5 EA. - INLET PROTECTION 1100 LF EAST ON OLD SAUK ROAD

12750		EROSION CONTROL AND GRADING PLAN-HIGH POINT CHURCH	12750	###	###	###	###
6		WEXFORD POND DREDGING	CITY OF MADISON	###	###	###	###
		S:\MAD\1000--1099\1020\126\Drawings\CAD\Civil\3d\SheetsPlan\Grading Plan.dwg	CONTRACT NO:	8876	###	###	###
			MARK	DESIGNED BY: TAW	REVISION	DATE	BY
				12750		Date: 5/12/2023 11:10 AM	
						Scale: 1"=40'	6

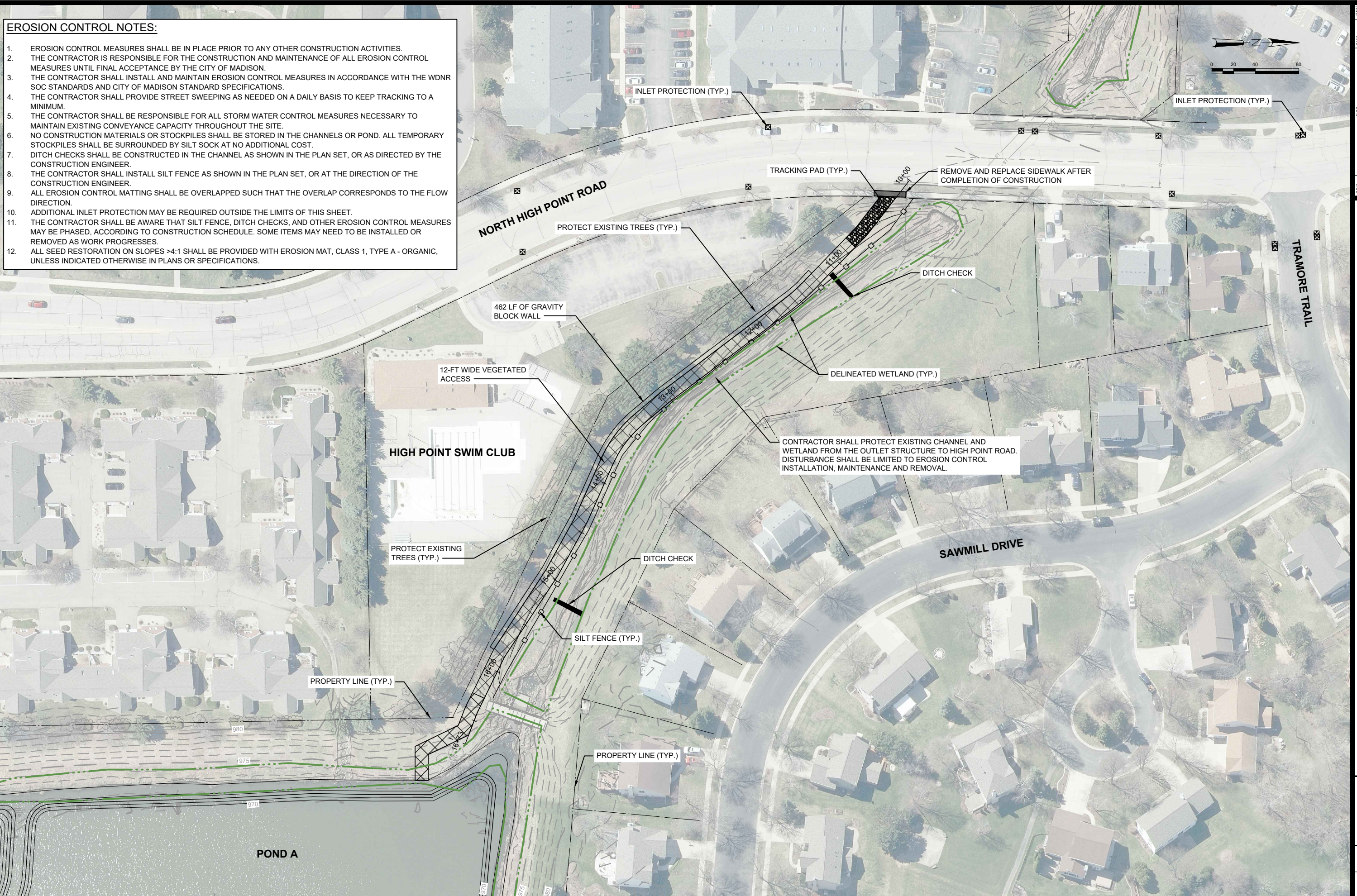
1. EROSION CONTROL MEASURES SHALL BE IN PLACE PRIOR TO ANY OTHER CONSTRUCTION ACTIVITIES.
2. THE CONTRACTOR IS RESPONSIBLE FOR THE CONSTRUCTION AND MAINTENANCE OF ALL EROSION CONTROL MEASURES UNTIL FINAL ACCEPTANCE BY THE CITY OF MADISON.
3. THE CONTRACTOR SHALL INSTALL AND MAINTAIN EROSION CONTROL MEASURES IN ACCORDANCE WITH THE WDNR SOC STANDARDS AND CITY OF MADISON STANDARD SPECIFICATIONS.
4. THE CONTRACTOR SHALL PROVIDE STREET SWEEPING AS NEEDED ON A DAILY BASIS TO KEEP TRACKING TO A MINIMUM.
5. THE CONTRACTOR SHALL BE RESPONSIBLE FOR ALL STORM WATER CONTROL MEASURES NECESSARY TO MAINTAIN EXISTING CONVEYANCE CAPACITY THROUGHOUT THE SITE.
6. NO CONSTRUCTION MATERIALS OR STOCKPILES SHALL BE STORED IN THE CHANNELS OR POND. ALL TEMPORARY STOCKPILES SHALL BE SURROUNDED BY SILT SOCK AT NO ADDITIONAL COST.
7. DITCH CHECKS SHALL BE CONSTRUCTED IN THE CHANNEL AS SHOWN IN THE PLAN SET, OR AS DIRECTED BY THE CONSTRUCTION ENGINEER.
8. THE CONTRACTOR SHALL INSTALL SILT FENCE AS SHOWN IN THE PLAN SET, OR AT THE DIRECTION OF THE CONSTRUCTION ENGINEER.
9. ALL EROSION CONTROL MATTING SHALL BE OVERLAPPED SUCH THAT THE OVERLAP CORRESPONDS TO THE FLOW DIRECTION.
10. ADDITIONAL INLET PROTECTION MAY BE REQUIRED OUTSIDE THE LIMITS OF THIS SHEET.
11. THE CONTRACTOR SHALL BE AWARE THAT SILT FENCE, DITCH CHECKS, AND OTHER EROSION CONTROL MEASURES MAY BE PHASED, ACCORDING TO CONSTRUCTION SCHEDULE. SOME ITEMS MAY NEED TO BE INSTALLED OR REMOVED AS WORK PROGRESSES.
12. ALL SEED RESTORATION ON SLOPES >4:1 SHALL BE PROVIDED WITH EROSION MAT, CLASS 1, TYPE A - ORGANIC, UNLESS INDICATED OTHERWISE IN PLANS OR SPECIFICATIONS.

[illegible]

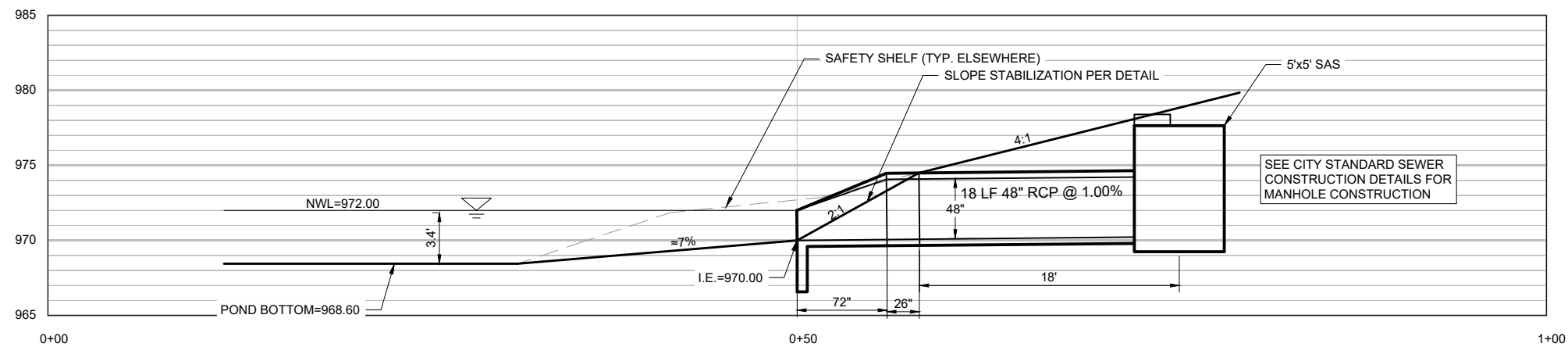
EROSION CONTROL NOTES:

1. EROSION CONTROL MEASURES SHALL BE IN PLACE PRIOR TO ANY OTHER CONSTRUCTION ACTIVITIES.
2. THE CONTRACTOR IS RESPONSIBLE FOR THE CONSTRUCTION AND MAINTENANCE OF ALL EROSION CONTROL MEASURES UNTIL FINAL ACCEPTANCE BY THE CITY OF MADISON.
3. THE CONTRACTOR SHALL INSTALL AND MAINTAIN EROSION CONTROL MEASURES IN ACCORDANCE WITH THE WDNr SOC STANDARDS AND CITY OF MADISON STANDARD SPECIFICATIONS.
4. THE CONTRACTOR SHALL PROVIDE STREET SWEEPING AS NEEDED ON A DAILY BASIS TO KEEP TRACKING TO A MINIMUM.
5. THE CONTRACTOR SHALL BE RESPONSIBLE FOR ALL STORM WATER CONTROL MEASURES NECESSARY TO MAINTAIN EXISTING CONVEYANCE CAPACITY THROUGHOUT THE SITE.
6. NO CONSTRUCTION MATERIALS OR STOCKPILES SHALL BE STORED IN THE CHANNELS OR POND. ALL TEMPORARY STOCKPILES SHALL BE SURROUNDED BY SILT SOCK AT NO ADDITIONAL COST.
7. DITCH CHECKS SHALL BE CONSTRUCTED IN THE CHANNEL AS SHOWN IN THE PLAN SET, OR AS DIRECTED BY THE CONSTRUCTION ENGINEER.
8. THE CONTRACTOR SHALL INSTALL SILT FENCE AS SHOWN IN THE PLAN SET, OR AT THE DIRECTION OF THE CONSTRUCTION ENGINEER.
9. ALL EROSION CONTROL MATTING SHALL BE OVERLAPPED SUCH THAT THE OVERLAP CORRESPONDS TO THE FLOW DIRECTION.
10. ADDITIONAL INLET PROTECTION MAY BE REQUIRED OUTSIDE THE LIMITS OF THIS SHEET.
11. THE CONTRACTOR SHALL BE AWARE THAT SILT FENCE, DITCH CHECKS, AND OTHER EROSION CONTROL MEASURES MAY BE PHASED, ACCORDING TO CONSTRUCTION SCHEDULE. SOME ITEMS MAY NEED TO BE INSTALLED OR REMOVED AS WORK PROGRESSES.
12. ALL SEED RESTORATION ON SLOPES >4:1 SHALL BE PROVIDED WITH EROSION MAT, CLASS 1, TYPE A - ORGANIC, UNLESS INDICATED OTHERWISE IN PLANS OR SPECIFICATIONS.

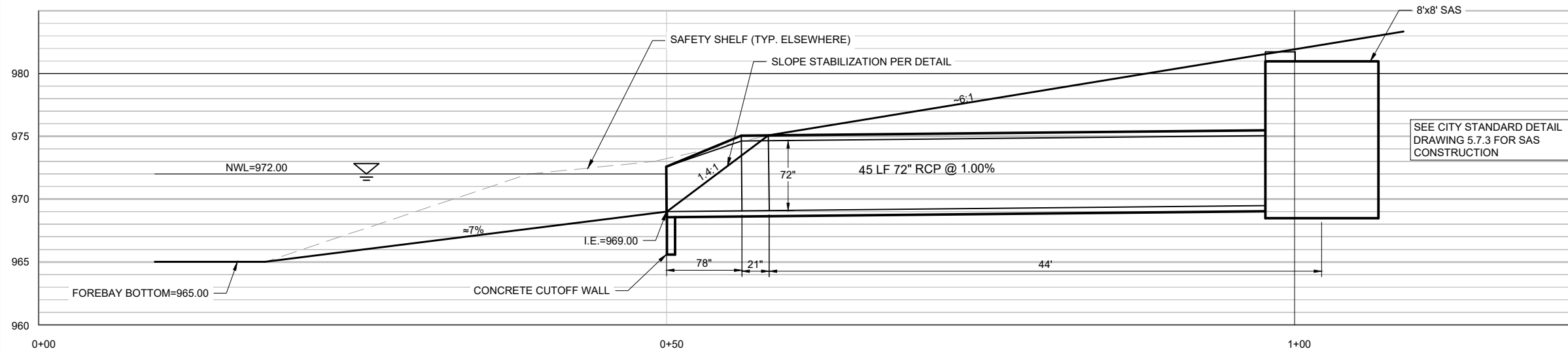
1. EROSION CONTROL MEASURES SHALL BE IN PLACE PRIOR TO ANY OTHER CONSTRUCTION ACTIVITIES.
2. THE CONTRACTOR IS RESPONSIBLE FOR THE CONSTRUCTION AND MAINTENANCE OF ALL EROSION CONTROL MEASURES UNTIL FINAL ACCEPTANCE BY THE CITY OF MADISON.
3. THE CONTRACTOR SHALL INSTALL AND MAINTAIN EROSION CONTROL MEASURES IN ACCORDANCE WITH THE WDNR SOC STANDARDS AND CITY OF MADISON STANDARD SPECIFICATIONS.
4. THE CONTRACTOR SHALL PROVIDE STREET SWEEPING AS NEEDED ON A DAILY BASIS TO KEEP TRACKING TO A MINIMUM.
5. THE CONTRACTOR SHALL BE RESPONSIBLE FOR ALL STORM WATER CONTROL MEASURES NECESSARY TO MAINTAIN EXISTING CONVEYANCE CAPACITY THROUGHOUT THE SITE.
6. NO CONSTRUCTION MATERIALS OR STOCKPILES SHALL BE STORED IN THE CHANNELS OR POND. ALL TEMPORARY STOCKPILES SHALL BE SURROUNDED BY SILT SOCK AT NO ADDITIONAL COST.
7. DITCH CHECKS SHALL BE CONSTRUCTED IN THE CHANNEL AS SHOWN IN THE PLAN SET, OR AS DIRECTED BY THE CONSTRUCTION ENGINEER.
8. THE CONTRACTOR SHALL INSTALL SILT FENCE AS SHOWN IN THE PLAN SET, OR AT THE DIRECTION OF THE CONSTRUCTION ENGINEER.
9. ALL EROSION CONTROL MATTING SHALL BE OVERLAPPED SUCH THAT THE OVERLAP CORRESPONDS TO THE FLOW DIRECTION.
10. ADDITIONAL INLET PROTECTION MAY BE REQUIRED OUTSIDE THE LIMITS OF THIS SHEET.
11. THE CONTRACTOR SHALL BE AWARE THAT SILT FENCE, DITCH CHECKS, AND OTHER EROSION CONTROL MEASURES MAY BE PHASED, ACCORDING TO CONSTRUCTION SCHEDULE. SOME ITEMS MAY NEED TO BE INSTALLED OR REMOVED AS WORK PROGRESSES.
12. ALL SEED RESTORATION ON SLOPES >4:1 SHALL BE PROVIDED WITH EROSION MAT, CLASS 1, TYPE A - ORGANIC, UNLESS INDICATED OTHERWISE IN PLANS OR SPECIFICATIONS.



48" OUTFALL PIPE PROFILE



72" OUTFALL PIPE PROFILE



RESTORATION LEGEND



TALL PRAIRIE GRASS SEEDING



TALL PRAIRIE GRASS SEEDING W/ EROSION
MAT CLASS I, TYPE A, ORGANIC



TALL PRAIRIE GRASS SEEDING W/ EROSION
MAT CLASS II, TYPE C, ORGANIC



TERRACE SEEDING



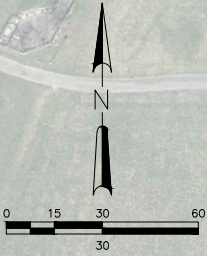
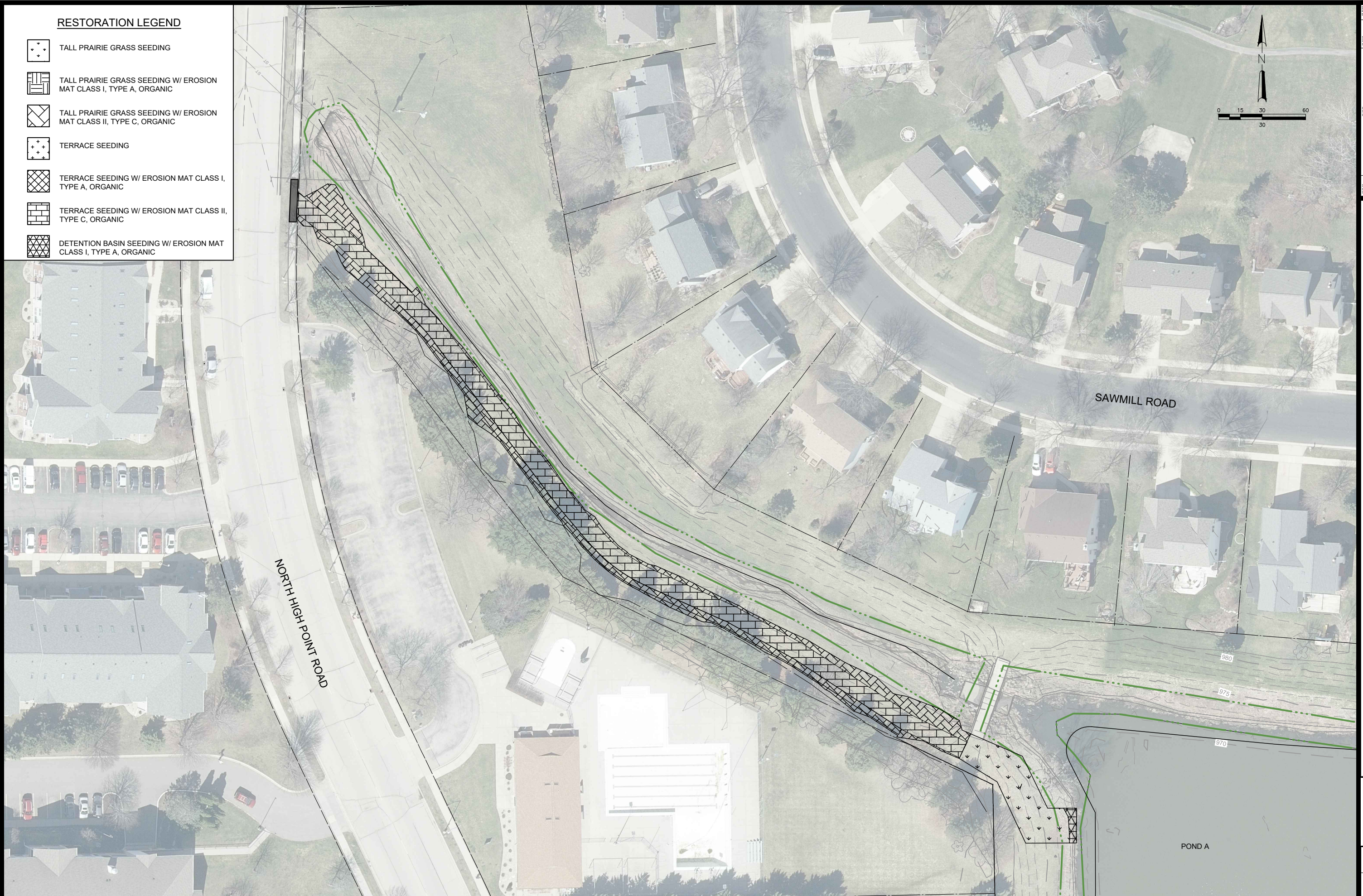
TERRACE SEEDING W/ EROSION MAT CLASS I,
TYPE A, ORGANIC



TERRACE SEEDING W/ EROSION MAT CLASS II
TYPE C, ORGANIC



DETENTION BASIN SEEDING W/ EROSION MAT
CLASS I, TYPE A, ORGANIC



RESTORATION PLAN - NORTH WEXFORD POND DREDGING

12750
CITY OF MADISON

12750
DISON

CITY



12750

10

MARK		REVISION		DATE	BY
###	###	###	###	###	###
###	###	###	###	###	###
###	###	###	###	###	###
###	###	###	###	###	###
###	###	###	###	###	###

Designed By: TAW Date: 5/12/2023 11:03 AM Scale: "1"=40'

12750 10

RESTORATION LEGEND



TALL PRAIRIE GRASS SEEDING



TALL PRAIRIE GRASS SEEDING W/ EROSION
MAT CLASS I, TYPE A, ORGANIC



TALL PRAIRIE GRASS SEEDING W/ EROSION
MAT CLASS II, TYPE C, ORGANIC



TERRACE SEEDING



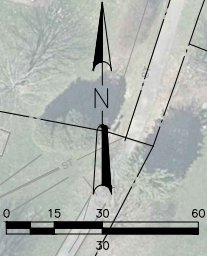
TERRACE SEEDING W/ EROSION MAT CLASS I
TYPE A, ORGANIC



TERRACE SEEDING W/ EROSION MAT CLASS I
TYPE C, ORGANIC



DETENTION BASIN SEEDING W/ EROSION MAT
CLASS I, TYPE A, ORGANIC



RESTORATION PLAN - MIDDLE

WEXFORD POND DREDGING

S:\MAD11000--1099\1020\126\Drawings\CAD\Civil 3d\SheetsPlan\Restoration Plan.dwg



12750

11

12750

CITY OF MADISON

CONTRACT NO: 8876

MARK	REVISION	DATE	BY
###	###	###	###
###	###	###	###
###	###	###	###
###	###	###	###
###	###	###	###

Designed By: TAW Date: 5/12/2023 11:03 AM Scale: 1"=40'

12750 11

RESTORATION LEGEND



TALL PRAIRIE GRASS SEEDING



TALL PRAIRIE GRASS SEEDING W/ EROSION
MAT CLASS I, TYPE A, ORGANIC



TALL PRAIRIE GRASS SEEDING W/ EROSION
MAT CLASS II, TYPE C, ORGANIC



TERRACE SEEDING



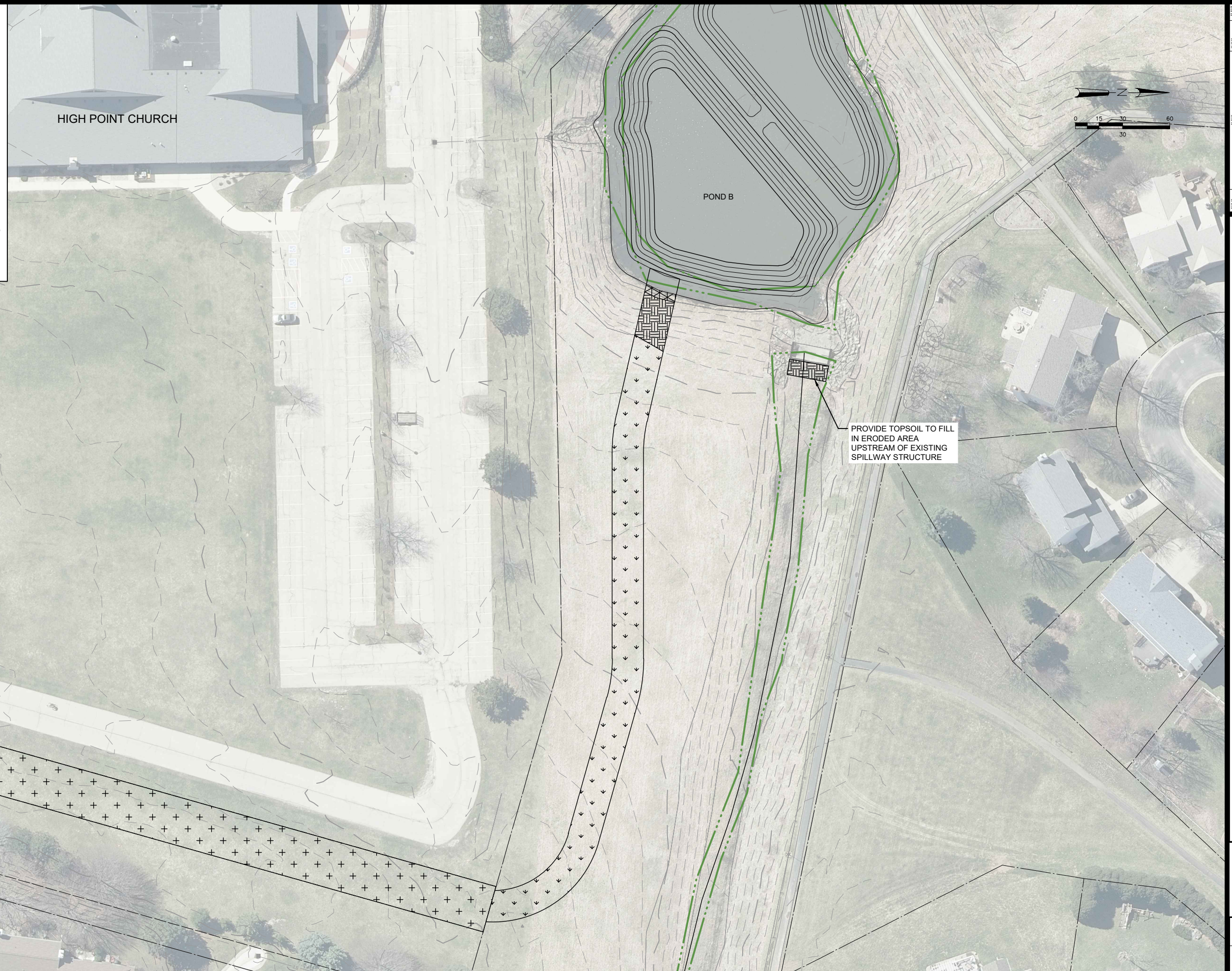
TERRACE SEEDING W/ EROSION MAT CLASS I,
TYPE A, ORGANIC



TERRACE SEEDING W/ EROSION MAT CLASS II,
TYPE C, ORGANIC



DETENTION BASIN SEEDING W/ EROSION MAT
CLASS I, TYPE A, ORGANIC



RESTORATION PLAN - SOUTH

WEXFORD POND DREDGING

S:\MAD1000--1099\1020126\Drawings\CAD\Civil 3d\SheetsPlan\Restoration Plan.dwg



12750

12

12750

CITY OF MADISON

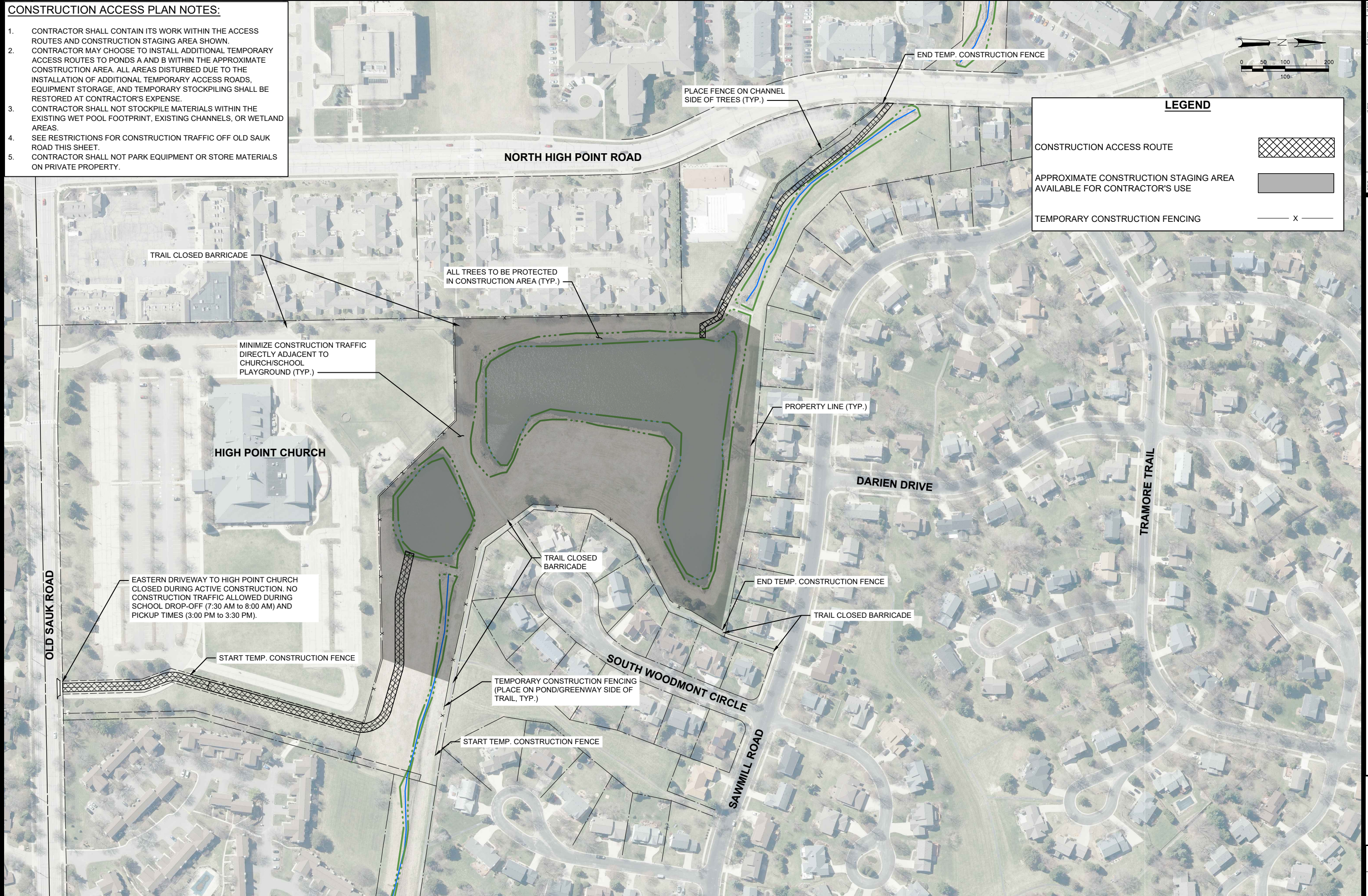
CONTRACT NO: 8876


[illegible]

CONSTRUCTION ACCESS PLAN NOTES:

1. CONTRACTOR SHALL CONTAIN ITS WORK WITHIN THE ACCESS ROUTES AND CONSTRUCTION STAGING AREA SHOWN.
2. CONTRACTOR MAY CHOOSE TO INSTALL ADDITIONAL TEMPORARY ACCESS ROUTES TO PONDS A AND B WITHIN THE APPROXIMATE CONSTRUCTION AREA. ALL AREAS DISTURBED DUE TO THE INSTALLATION OF ADDITIONAL TEMPORARY ACCESS ROADS, EQUIPMENT STORAGE, AND TEMPORARY STOCKPILING SHALL BE RESTORED AT CONTRACTOR'S EXPENSE.
3. CONTRACTOR SHALL NOT STOCKPILE MATERIALS WITHIN THE EXISTING WET POOL FOOTPRINT, EXISTING CHANNELS, OR WETLAND AREAS.
4. SEE RESTRICTIONS FOR CONSTRUCTION TRAFFIC OFF OLD SAUK ROAD THIS SHEET.
5. CONTRACTOR SHALL NOT PARK EQUIPMENT OR STORE MATERIALS ON PRIVATE PROPERTY.

- ## CONSTRUCTION ACCESS PLAN NOTES:
1. CONTRACTOR SHALL CONTAIN ITS WORK WITHIN THE ACCESS ROUTES AND CONSTRUCTION STAGING AREA SHOWN.
 2. CONTRACTOR MAY CHOOSE TO INSTALL ADDITIONAL TEMPORARY ACCESS ROUTES TO PONDS A AND B WITHIN THE APPROXIMATE CONSTRUCTION AREA. ALL AREAS DISTURBED DUE TO THE INSTALLATION OF ADDITIONAL TEMPORARY ACCESS ROADS, EQUIPMENT STORAGE, AND TEMPORARY STOCKPILING SHALL BE RESTORED AT CONTRACTOR'S EXPENSE.
 3. CONTRACTOR SHALL NOT STOCKPILE MATERIALS WITHIN THE EXISTING WET POOL FOOTPRINT, EXISTING CHANNELS, OR WETLAND AREAS.
 4. SEE RESTRICTIONS FOR CONSTRUCTION TRAFFIC OFF OLD SAUK ROAD THIS SHEET.
 5. CONTRACTOR SHALL NOT PARK EQUIPMENT OR STORE MATERIALS ON PRIVATE PROPERTY.





12750

13

CONSTRUCTION ACCESS PLAN

12750

WEXFORD POND DREDGING

CITY OF MADISON

S:\MAD\1000--1099\1020\126\Drawings\CAD\Civil 3d\Sheets\Plan\Construction Access Exhibit.dwg

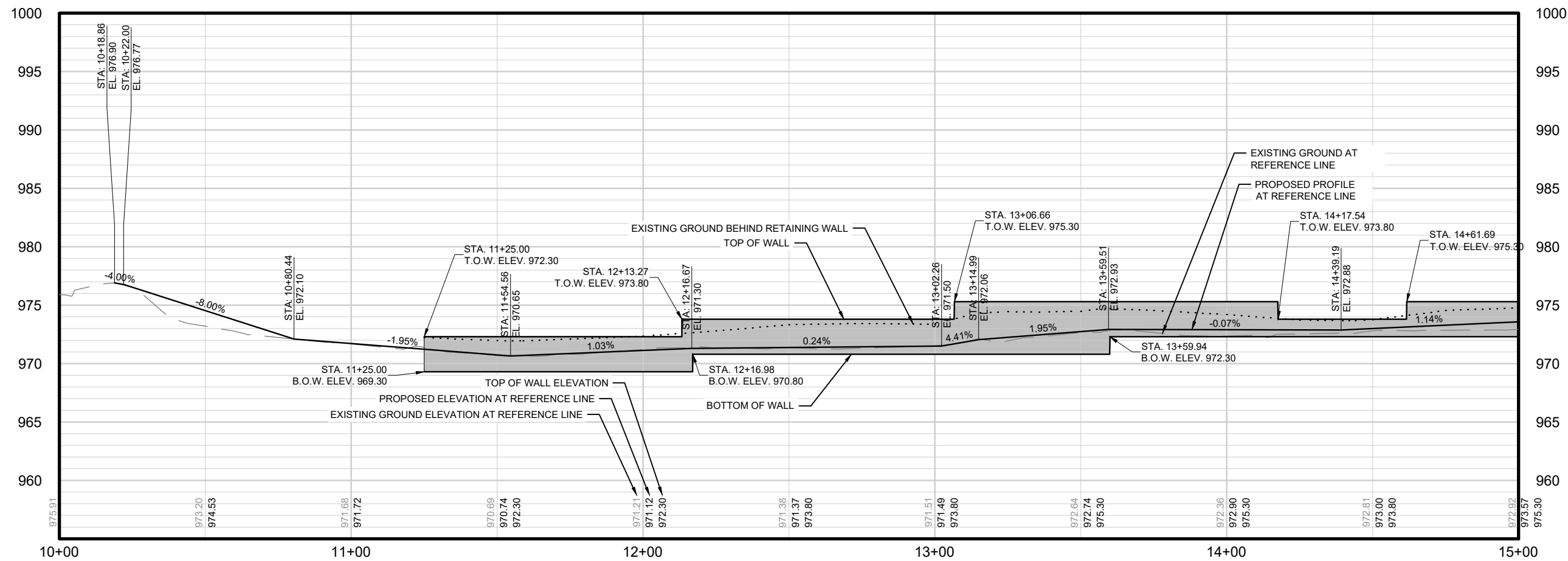
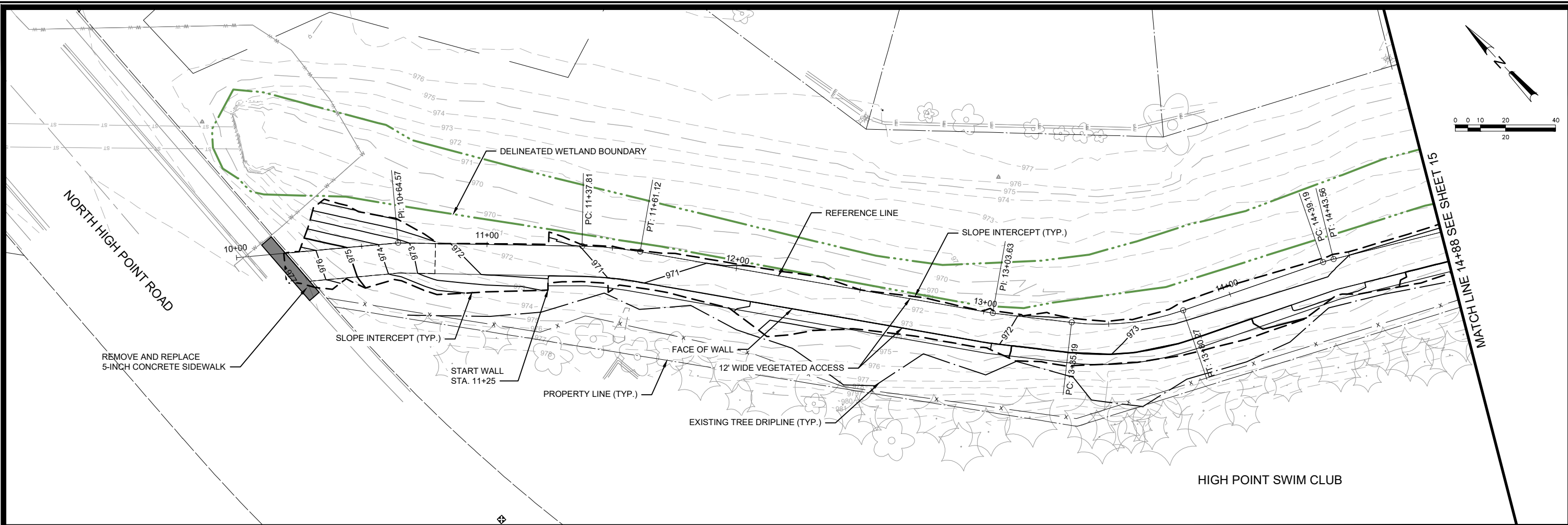
CONTRACT NO: 8876

MARK	REVISION	DATE	BY
###	###	###	###
###	###	###	###
###	###	###	###
###	###	###	###
###	###	###	###

Designed By: TAW Date: 5/12/2023 11:03 AM Scale: 1"=40'

12750

13

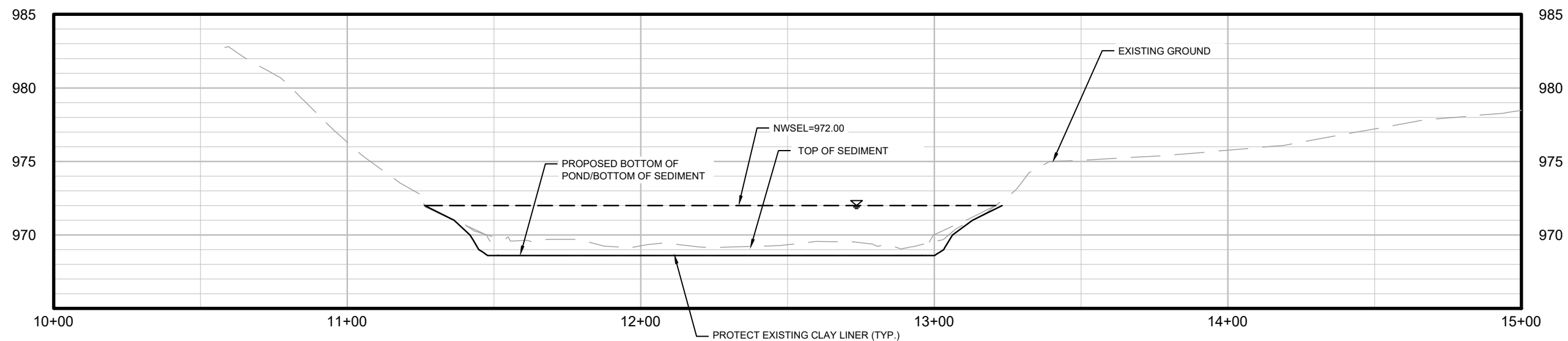


12750	14
CITY OF MADISON	14
VEGETATED ACCESS PLAN AND PROFILE	14
WEXFORD POND DREDGING	14
CONTRACT NO: 8876	14
DESIGNED BY: TAW	14
DATE: 5/12/2023 11:04 AM	14
REVISION	14
MARK	14
BY	14
12750	14

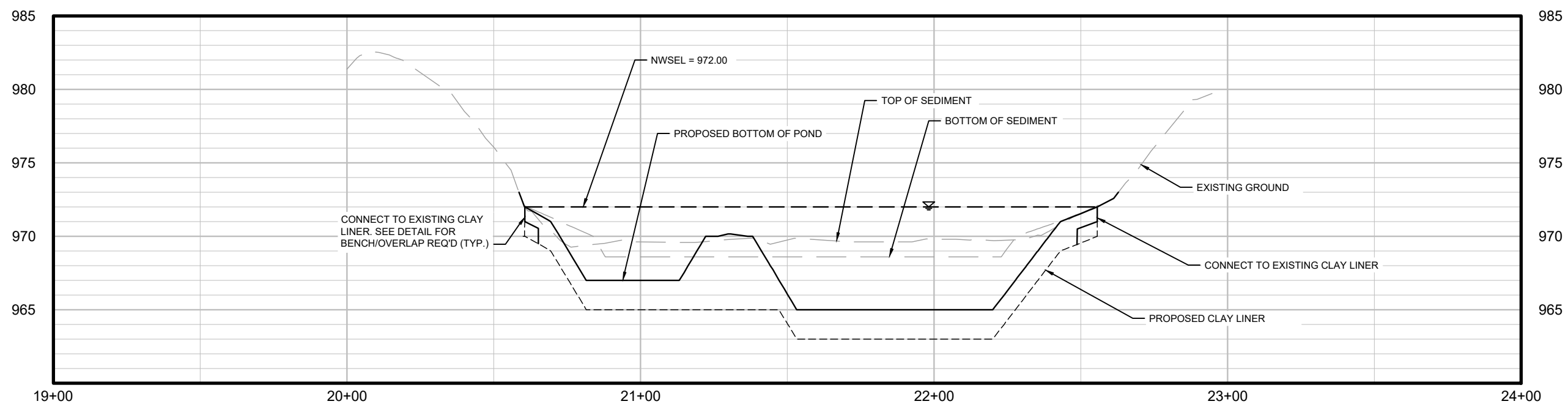
S:\MAD1000-10991020126\Drawings\CAD\Civil 3d\SheetsPlan\NHP Access.dwg

12750

14



POND B - SECTION B-B



MARK	REVISION	DATE	BY:
###	###	###	###
###	###	###	###
###	###	###	###
###	###	###	###
###	###	###	###

12750

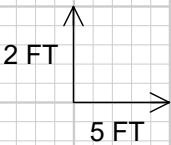
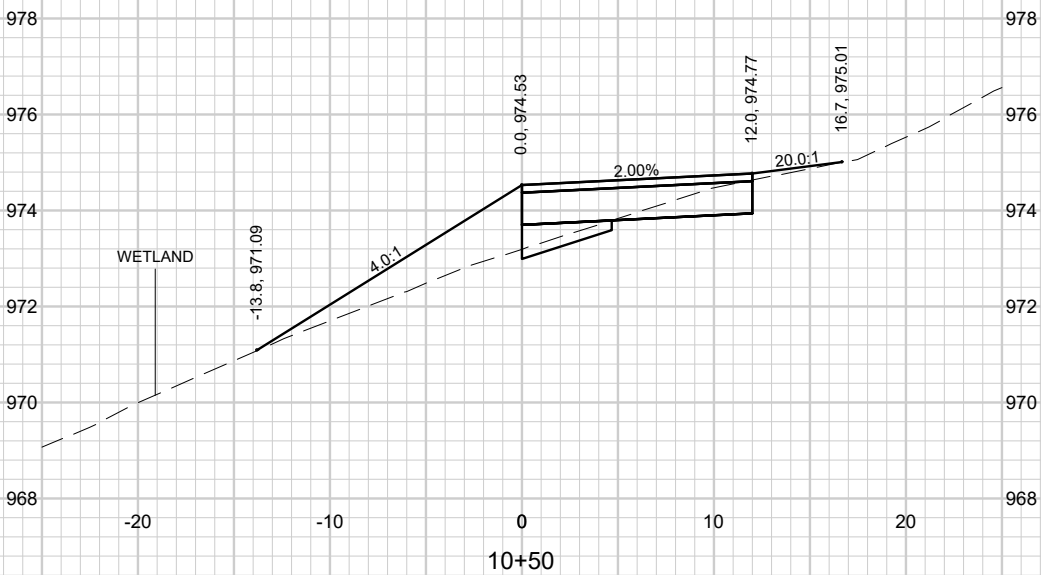
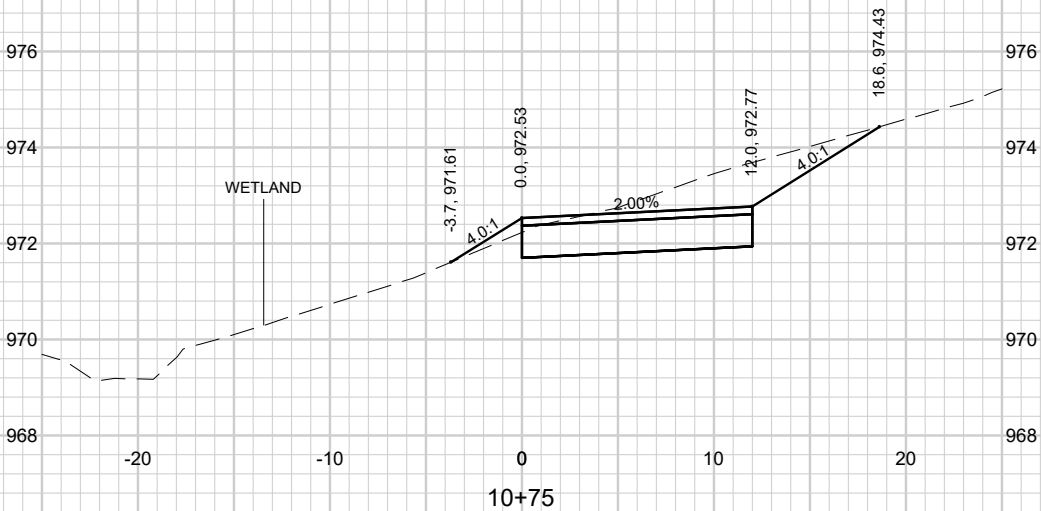
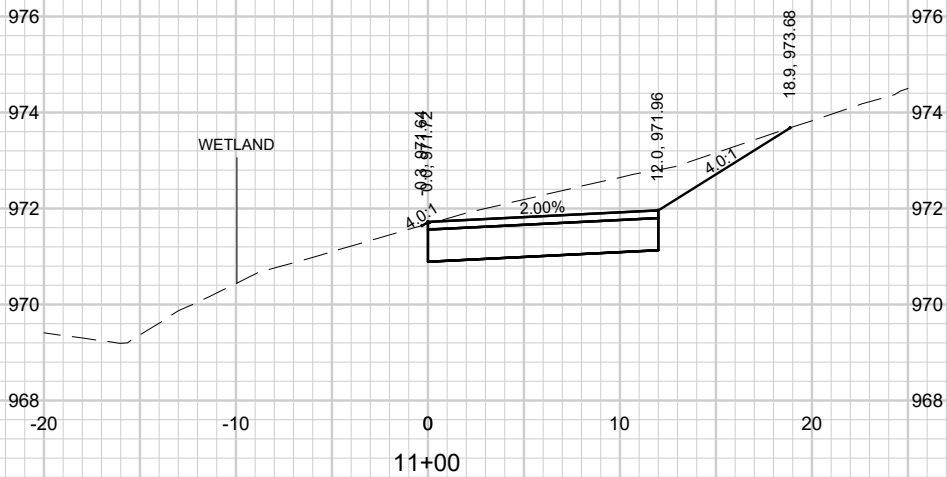
CITY OF MADISON

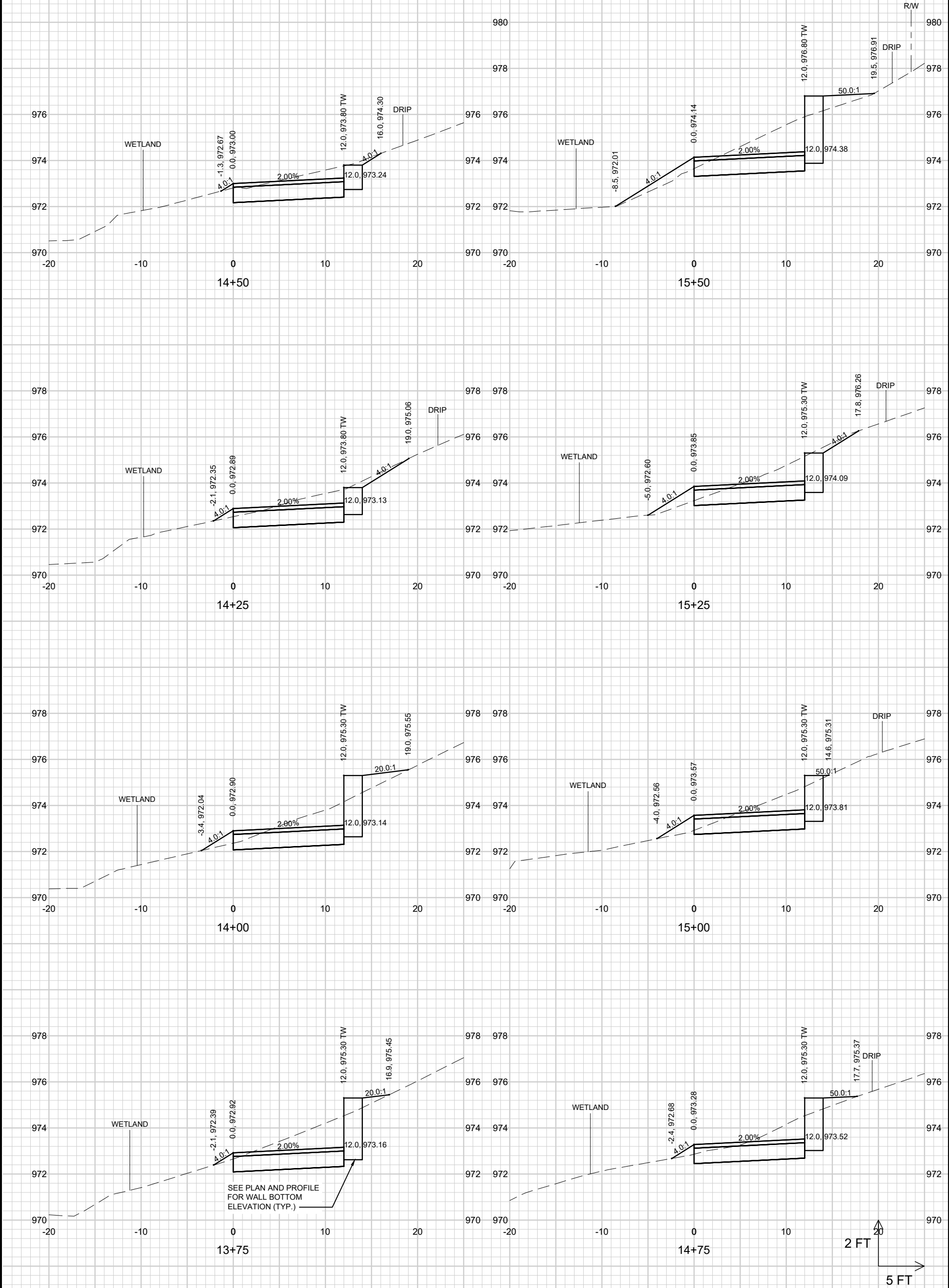
CONTRACT NO: 8876

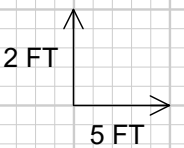
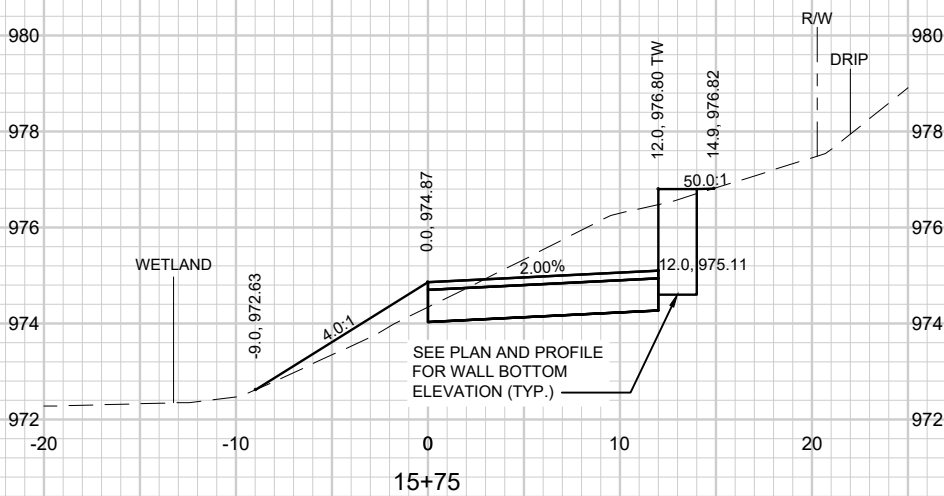
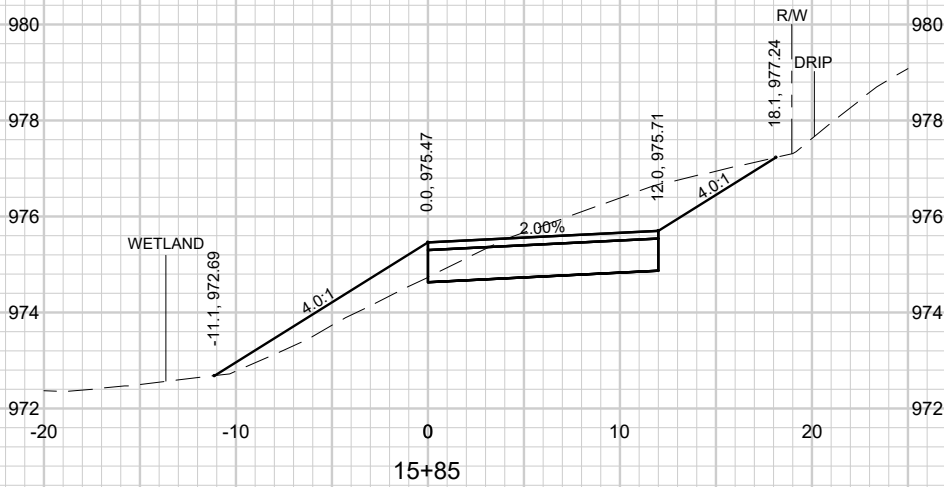
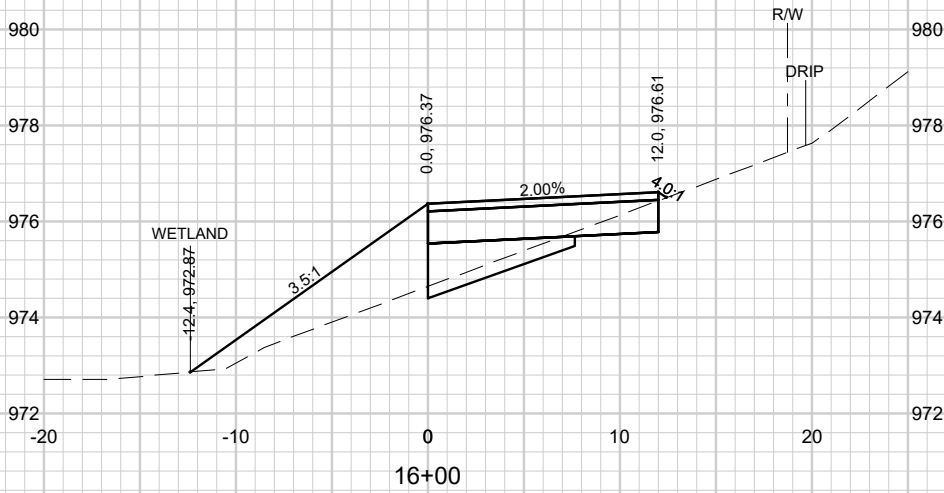
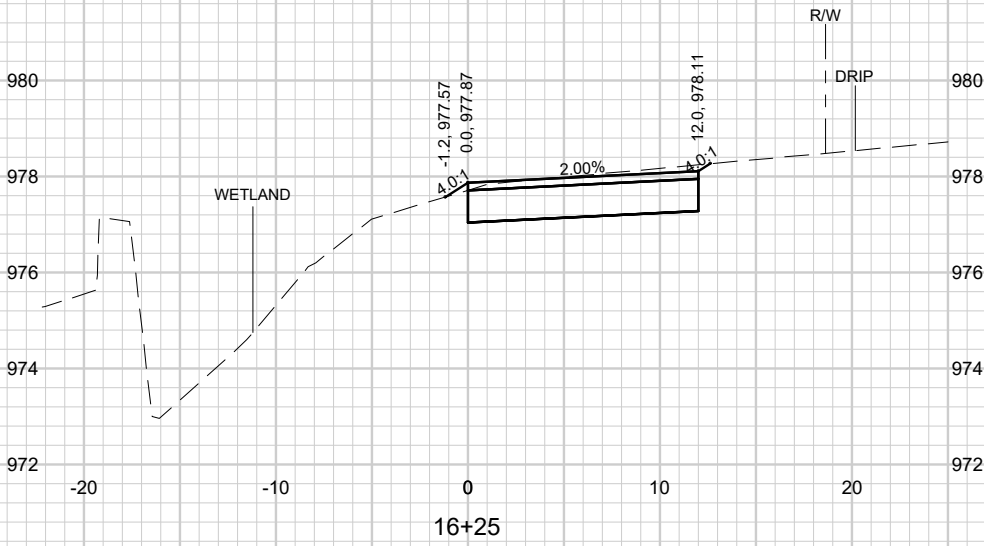
POND CROSS SECTIONS
WEXFORD POND DREDGING



12750
16







###	###	###	###
###	###	###	###
###	###	###	###
###	###	###	###
MARK	REVISION	DATE	BY
Designed By: TAW	Date: 5/15/2023 9:23 AM	Scale: 1"=40'	
12750			21