

**Atwood % for Arts Poetry in sidewalks proposal:
Madeleine Bohn - Madison's first Youth Poet Laureate**

Hands

*Cracked hands, whacked hands
Rough palms, healed by no balm
Grime-packed fingernails, blood leaking in small trails
Rough, chafed hands, splintering as they dig into land.*

*I think I shall keep
My hands*

Madeleine Bohn

Teakettle

*She collects the aged,
well-loved kettle
Passed through hand after hand,
gifted as greetings and goodbyes,
Fills with water, lets it settle
On the rusty little stovetop,
heat turned to high.*

Madeleine Bohn

Angela Trudell Vasquez – Madison Poet Laureate

Never More (two different panels name only on second panel)

*Love doesn't live here anymore
I kicked her out the door,
she made me weep,
she left me weak. I repeat.*

*Love doesn't live here anymore,
I'm all sore, my heart's broke,
and I can mope for days on end,
but I won't let her back in the door.*

Angela Trudell Vasquez

Blessed Be Creation

*in the orange sherbet sky
pink and purple rays glide by
brick and mortar
soars towards the Sound,
this is what I love about being alive
the colors of the night.*

Angela Trudell Vasquez

Dignity Sits (*center justified*)

*Dignity sits in a chair
In a room,
Chooses words carefully
Tasting the flavor of each one,
Listening to all those who
Like the sound of their own voice best.*

*Dignity decides who's fair.
Dignity waits his turn.*

Angela Trudell Vasquez

The Other America Tour Training Session

there's no question
these are hard times
and maybe there are
always bad times for some
but right now
this minute you
are green, beautiful
and young
and great days
are to come.

Angela Trudell Vasquez

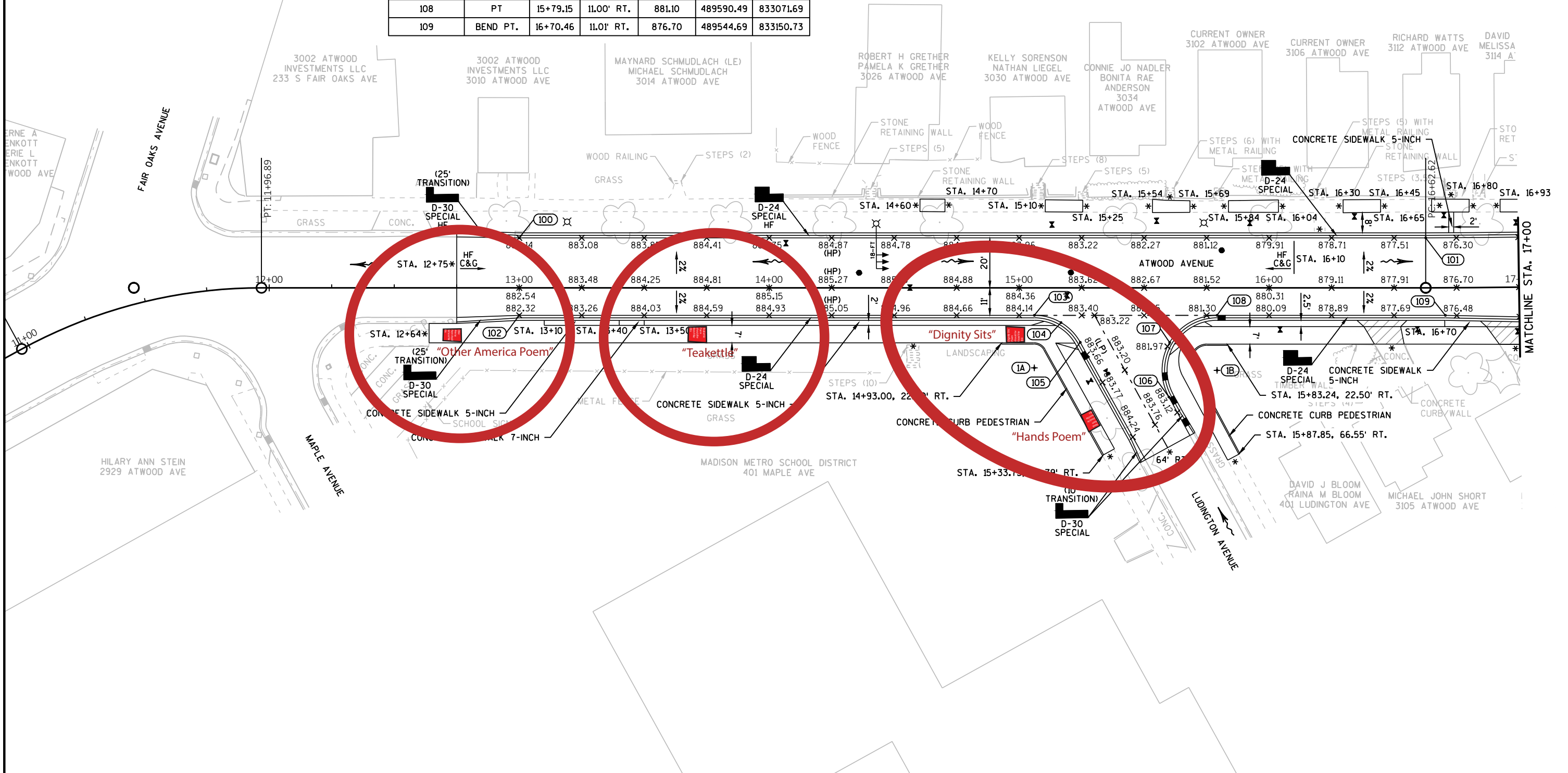
Eyes Alive

*There is looking in not looking.
The eyes reach out
From the picture
and claim,
I am, I was,
I did once exist,
and this is proof
Of my existence.*

Angela Trudell Vasquez

CURB & GUTTER STAKING INFORMATION						
POINT NUMBER	DESCRIPTION	STATION	OFFSET	ELEVATION	NORTHING	EASTING
100	BEND PT.	13+00.00	20.00' LT.	882.14	489757.25	832845.69
101	PC	16+62.62	20.00' LT.	876.90	489575.47	833159.45
102	BEND PT.	13+00.00	11.00' RT.	882.32	489730.43	832830.15
103	PC	15+06.07	11.00' RT.	883.98	489627.12	833008.46
104	MID PT.	15+16.72	13.90' RT.	883.78	489619.27	833016.22
105	PT	15+24.43	21.80' RT.	883.67	489608.57	833018.93
106	PC	15+59.92	43.68' RT.	882.84	489571.86	833038.67
107	MID PT.	15+60.19	21.84' RT.	881.91	489590.61	833049.85
108	PT	15+79.15	11.00' RT.	881.10	489590.49	833071.69
109	BEND PT.	16+70.46	11.01' RT.	876.70	489544.69	833150.73

CURB & GUTTER RADIUS STAKING INFORMATION					
POINT NUMBER	RADIUS	STATION	OFFSET	NORTHING	EASTING
1A	20.00'	15+06.07	32.00' RT.	489608.95	832997.93
1B	21.00'	15+79.15	33.00' RT.	489571.45	833060.66



PROJECT NO: 5992-10-16

HWY: ATWOOD AVENUE

COUNTY: DANE

PAVING DETAILS

SHEET

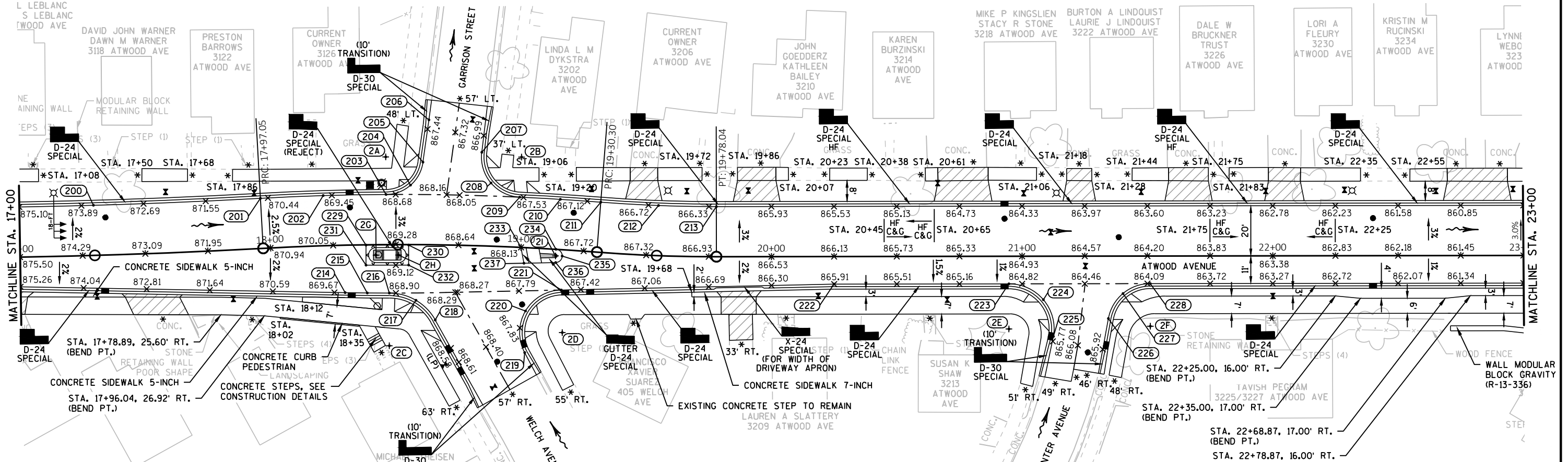
E



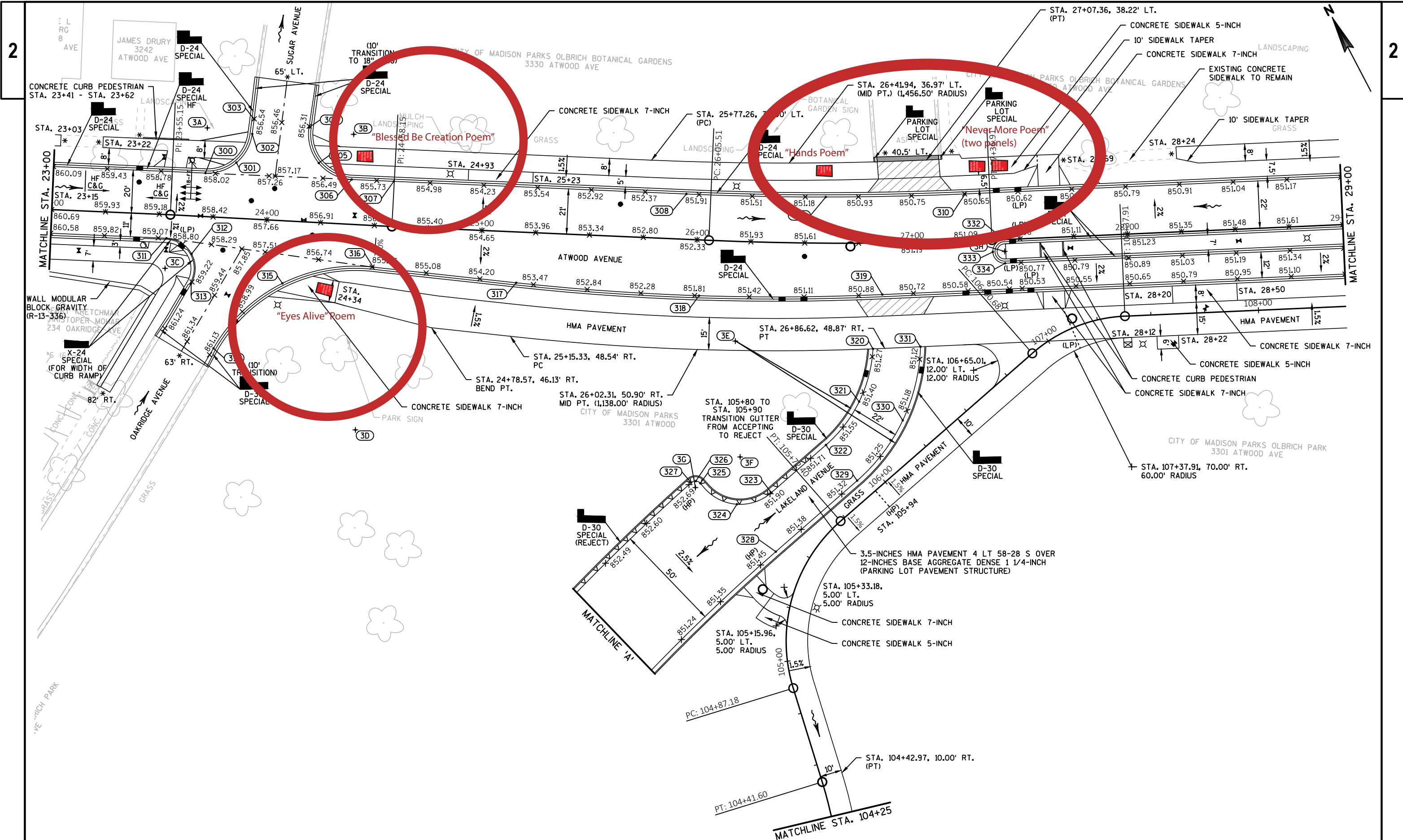
CURB & GUTTER STAKING INFORMATION						
POINT NUMBER	DESCRIPTION	STATION	OFFSET	ELEVATION	NORTHING	EASTING
200	MID PT.	17+29.83	20.00' LT.	873.66	489542.82	833217.59
201	PT/PC	17+97.05	20.00' LT.	870.57	489511.75	833276.58
202	MID PT.	18+21.61	20.00' LT.	869.58	489500.10	833298.76
203	PT/PC	18+46.18	20.00' LT.	868.79	489487.91	833320.65
204	MID PT.	18+55.75	23.69' LT.	868.47	489486.19	833330.97
205	PT	18+60.54	32.92' LT.	868.11	489491.64	833339.90
206	BEND PT.	18+62.68	49.81' LT.	867.26	489505.03	833350.44
207	PC	18+83.15	37.28' LT.	867.23	489483.22	833362.16
208	MID PT.	18+87.11	25.17' LT.	867.66	489470.79	833359.19
209	PT/PC	18+98.54	20.00' LT.	867.56	489460.15	833366.27
210	MID PT.	19+14.42	20.00' LT.	867.29	489451.26	833379.81
211	PT/PC	19+30.30	20.00' LT.	867.04	489442.16	833393.22
212	MID PT.	19+54.17	20.00' LT.	866.66	489429.42	833412.45

CURB & GUTTER STAKING INFORMATION						
POINT NUMBER	DESCRIPTION	STATION	OFFSET	ELEVATION	NORTHING	EASTING
213	PT	19+78.04	20.00' LT.	866.28	489417.46	833432.19
214	PC	18+29.35	18.95' RT.	869.53	489462.20	833286.89
215	MID PT.	18+38.33	19.24' RT.	869.24	489457.66	833294.45
216	PT/PC	18+47.32	19.37' RT.	868.97	489453.20	833302.04
217	MID PT.	18+58.15	22.25' RT.	868.83	489445.37	833309.77
218	PT	18+66.14	30.03' RT.	868.71	489434.71	833312.47
219	PC	19+03.56	41.86' RT.	867.93	489405.54	833336.78
220	MID PT.	19+03.05	25.29' RT.	867.74	489419.70	833345.41
221	PT	19+17.13	16.08' RT.	867.53	489419.77	833361.99
222	BEND PT.	20+24.93	11.00' RT.	865.91	489367.13	833457.22
223	PC	20+94.69	11.00' RT.	864.89	489332.17	833517.59
224	MID PT.	21+08.44	17.38' RT.	865.13	489319.76	833526.28
225	PT	21+12.44	31.99' RT.	865.61	489305.10	833522.42

CURB & GUTTER STAKING INFORMATION						
POINT NUMBER	DESCRIPTION	STATION	OFFSET	ELEVATION	NORTHING	EASTING
226	PC	21+34.39	24.92' RT.	864.92	489300.23	833544.96
227	MID PT.	21+40.23	14.94' RT.	864.61	489305.94	833555.02
228	PT	21+51.10	11.00' RT.	864.08	489303.89	833566.40
229	BEGIN C&G	18+38.11	0.13' RT.	869.63	489474.42	833303.62
230	END C&G	18+55.11	0.20' RT.	869.14	489465.90	833318.33
231	BEGIN C&G	18+38.00	8.13' RT.	869.47	489467.50	833299.61
232	END C&G	18+55.14	8.20' RT.	868.98	489458.98	833314.32
233	BEGIN C&G	19+00.00	0.00' .	868.13	489442.55	833356.66
234	PC	19+13.92	0.00' .	867.90	489434.90	833368.30
235	MID PT.	19+16.58	2.54' RT.	867.81	489431.32	833369.09
236	PT	19+14.15	5.29' RT.	867.79	489430.38	833365.54
237	BEGIN C&G	19+01.42	6.27' RT.	867.98	489436.51	833354.44



CURB & GUTTER RADIUS STAKING INFORMATION					
POINT NUMBER	RADIUS	STATION	OFFSET	NORTHING	EASTING
2A	14.00'	18+46.18	35.00' LT.	489500.92	833328.11
2B	15.00'	18+98.54	36.00' LT.	489473.59	833374.94
2C	20.00'	18+47.19	40.37' RT.	489435.05	833291.48
2D	16.00'	19+18.65	33.01' RT.	489404.89	833353.77
2E	17.00'	20+94.69	29.00' RT.	489316.59	833508.56
2F	16.00'	21+51.10	28.00' RT.	489289.18	833557.88
2G	3.00'	18+42.07	4.17' RT.	489468.96	833305.08
2H	3.00'	18+51.11	4.21' RT.	489464.45	833312.87
2I	2.65' (FLANGE)	19+13.92	2.65' RT.	489432.70	833366.83



PROJECT NO: 5992-10-16

HWY: ATWOOD AVENUE

COUNTY: DANE

PAVING DETAILS

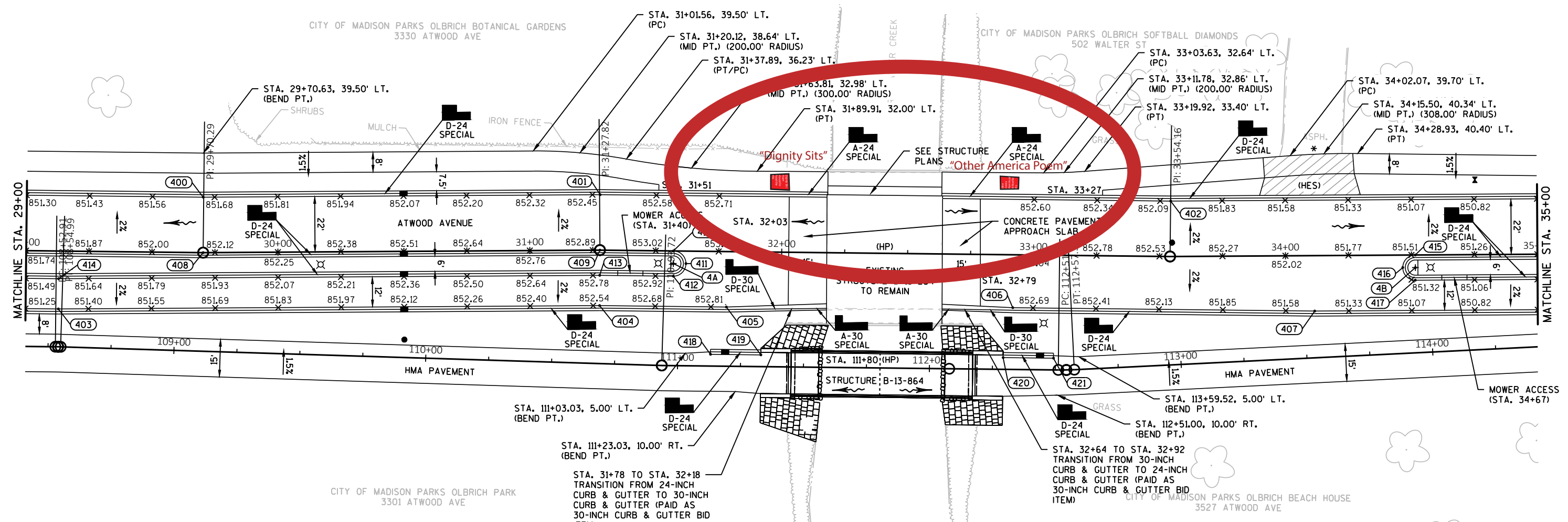
SHEET

E

CURB & GUTTER STAKING INFORMATION						
POINT NUMBER	DESCRIPTION	STATION	OFFSET	ELEVATION	NORTHING	EASTING
400	BEND PT.	29+70.48	22.00' LT.	851.66	488945.06	834301.56
401	BEND PT.	31+27.82	22.00' LT.	852.47	488880.80	834445.44
402	BEND PT.	33+54.55	22.00' LT.	852.04	488784.84	834650.60
403	BEND PT.	29+13.09	23.00' RT.	851.32	488928.45	834230.86
404	BEND PT.	31+27.56	22.00' RT.	852.56	488840.83	834427.05
405	BEND PT.	31+78.28	22.00' RT.	852.84	488819.50	834472.64
406	BEND PT.	32+91.96	21.00' RT.	852.78	488772.24	834576.04
407	BEND PT.	34+11.46	22.00' RT.	851.46	488721.46	834684.62
408	BEND PT.	29+70.29	0.00' .	852.10	488925.05	834292.42

CURB & GUTTER STAKING INFORMATION						
POINT NUMBER	DESCRIPTION	STATION	OFFSET	ELEVATION	NORTHING	EASTING
409	BEND PT.	31+27.82	0.00' .	852.91	488860.81	834436.26
410	PC	31+56.97	0.00' LT.	853.06	488848.46	834462.66
411	MID PT.	31+62.01	4.96' RT.	853.01	488841.83	834465.12
412	PT	31+57.05	10.00' RT.	852.96	488839.37	834458.49
413	BEND PT.	31+27.67	10.00' RT.	852.80	488851.74	834432.04
414	BEND PT.	29+12.98	11.00' RT.	851.56	488939.37	834235.85
415	PC	34+51.53	0.00' .	851.50	488725.20	834730.18
416	MID PT.	34+46.53	4.96' RT.	851.56	488722.72	834723.59
417	PT	34+51.44	10.00' RT.	851.30	488716.11	834726.02

CURB & GUTTER RADIUS STAKING INFORMATION					
POINT NUMBER	RADIUS	STATION	OFFSET	NORTHING	EASTING
4A	4.00'	31+57.01	5.00' RT.	488843.91	834460.58
4B	4.00'	34+51.53	5.00' RT.	488720.64	834728.14



CURB & GUTTER STAKING INFORMATION						
POINT NUMBER	DESCRIPTION	STATION	OFFSET	ELEVATION	NORTHING	EASTING
418	BEGIN C&G	111+13.03	4.67' LT.	854.83	488805.03	834459.12
419	END C&G	111+33.03	4.67' LT.	854.97	488796.56	834477.24
420	BEGIN C&G	112+29.20	4.67' LT.	854.96	488755.81	834564.35
421	END C&G	112+49.20	4.67' LT.	854.81	488747.34	834582.46

CURB & GUTTER STAKING INFORMATION						
POINT NUMBER	DESCRIPTION	STATION	OFFSET	ELEVATION	NORTHING	EASTING
500	BEND PT.	36+23.49	22.00' LT.	849.50	488675.09	834896.34
501	BEND PT.	35+65.93	22.00' RT.	849.93	488658.46	834825.66
502	PC	39+32.87	23.00' RT.	850.78	488503.16	835157.69
503	MID PT.	39+67.56	23.30' RT.	851.01	488488.19	835188.98
504	PT	40+02.25	24.21' RT.	851.24	488472.67	835220.02
505	BEGIN C&G	37+02.85	45.00' RT.	849.86	488580.69	834940.01
506	BEGIN C&G	37+30.85	45.00' RT.	850.00	488568.82	834965.37
507	BEND PT.	36+23.49	0.00' .	849.94	488655.08	834887.19

CURB & GUTTER STAKING INFORMATION						
POINT NUMBER	DESCRIPTION	STATION	OFFSET	ELEVATION	NORTHING	EASTING
508	PC	36+85.27	0.00' .	849.73	488628.90	834943.15
509	MID PT.	36+90.77	5.50' RT.	849.79	488621.59	834945.80
510	PT	36+85.27	11.00' RT.	849.71	488618.94	834938.49
511	BEND PT.	35+66.03	10.00' RT.	850.17	488669.38	834830.65
512	PC	39+67.87	0.00' .	851.47	488509.16	835199.14
513	MID PT.	39+62.38	5.40' RT.	851.41	488506.60	835191.87
514	PT	39+67.68	11.00' RT.	851.34	488499.28	835194.31

CURB & GUTTER RADIUS STAKING INFORMATION					
POINT NUMBER	RADIUS	STATION	OFFSET	NORTHING	EASTING
5A	4.50'	36+85.27	5.50' RT.	488623.92	834940.82
5B	4.50'	39+67.87	5.50' RT.	488504.18	835196.81

