
STUDENT HOUSING

JOHNSON STREET | MADISON, WISCONSIN

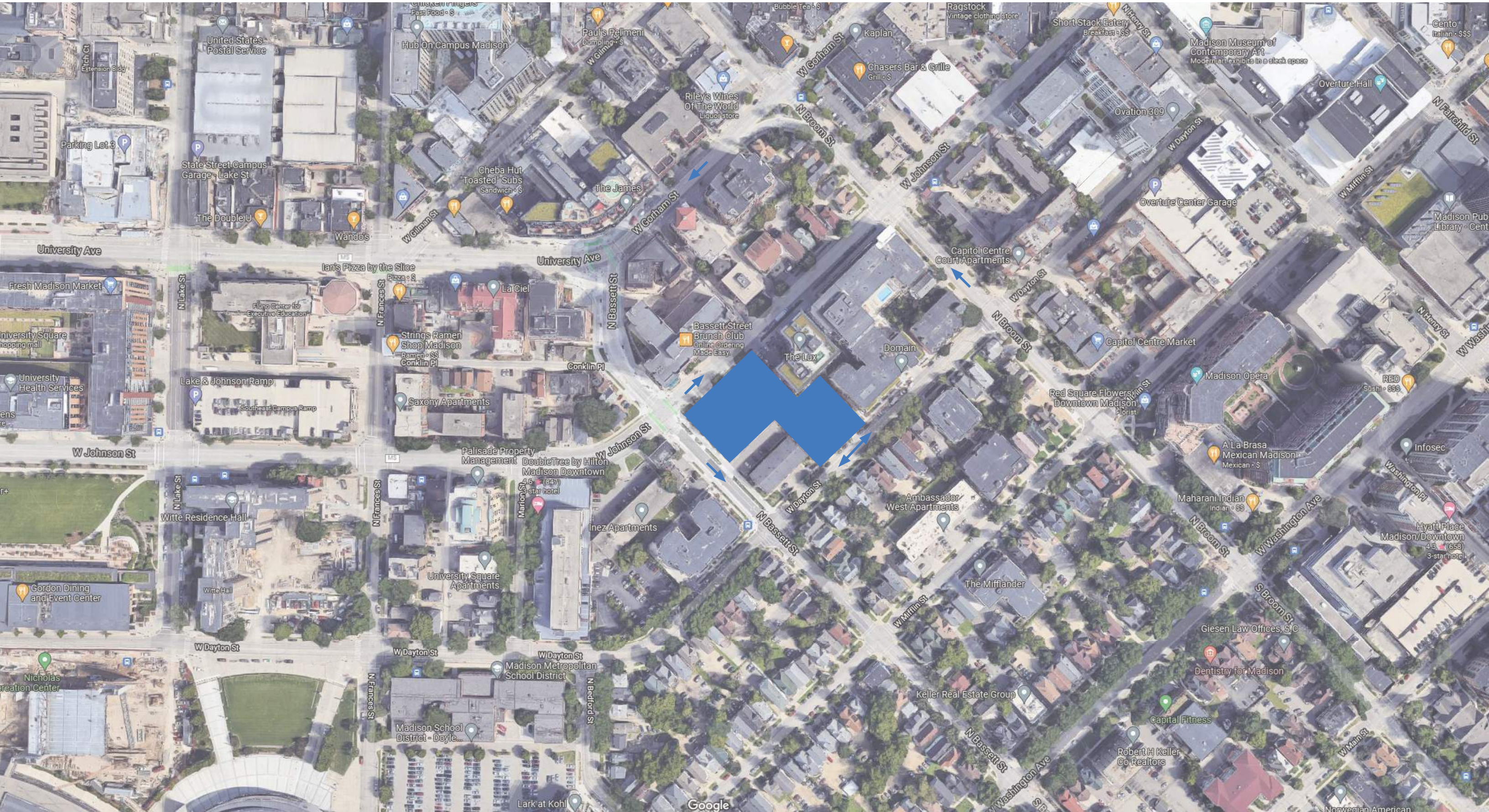
CORE MADISON BASSETT, LLC

UDC FORMAL SUBMITTAL

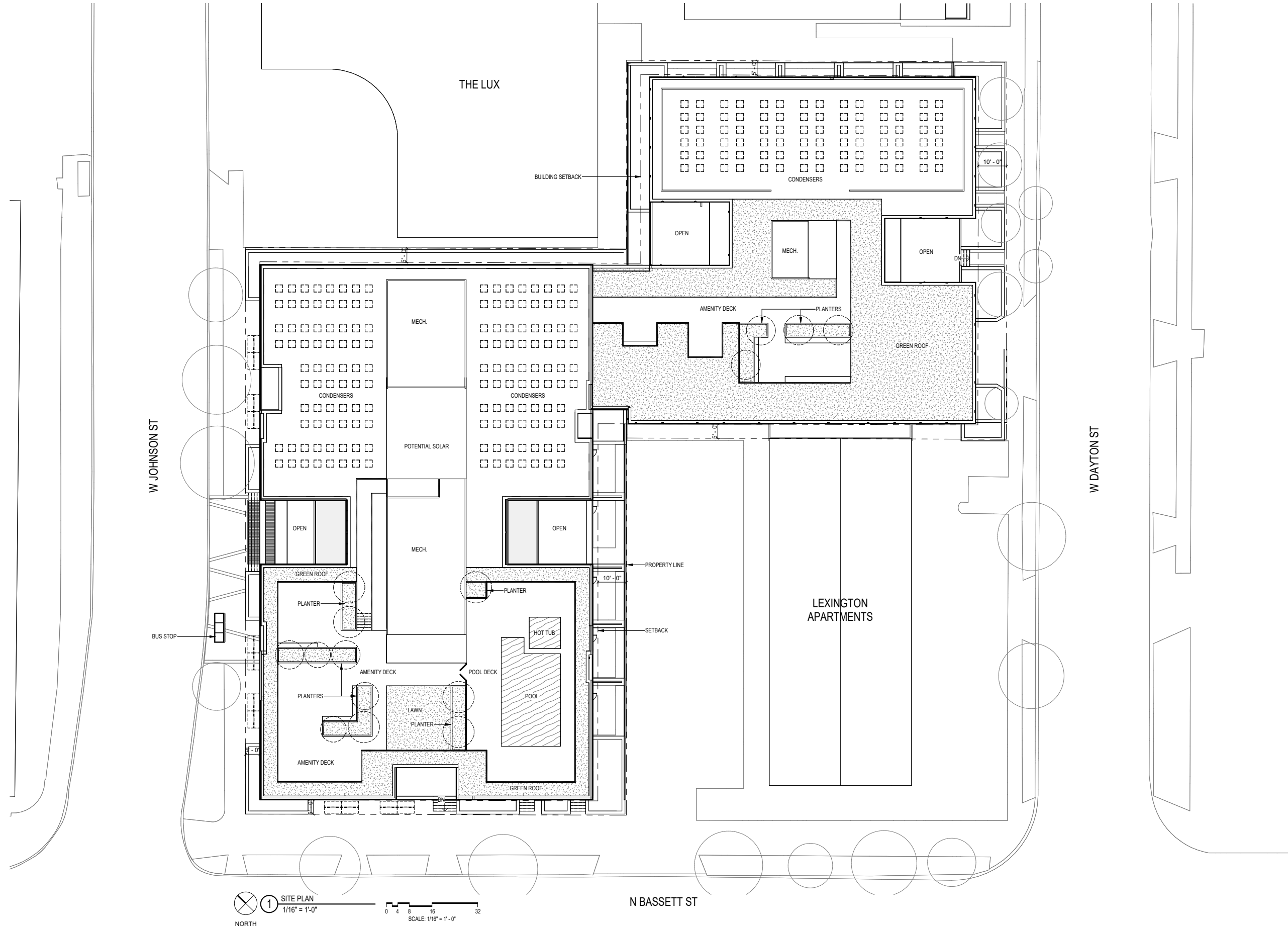
MAY 26, 2023

Kahler Slater

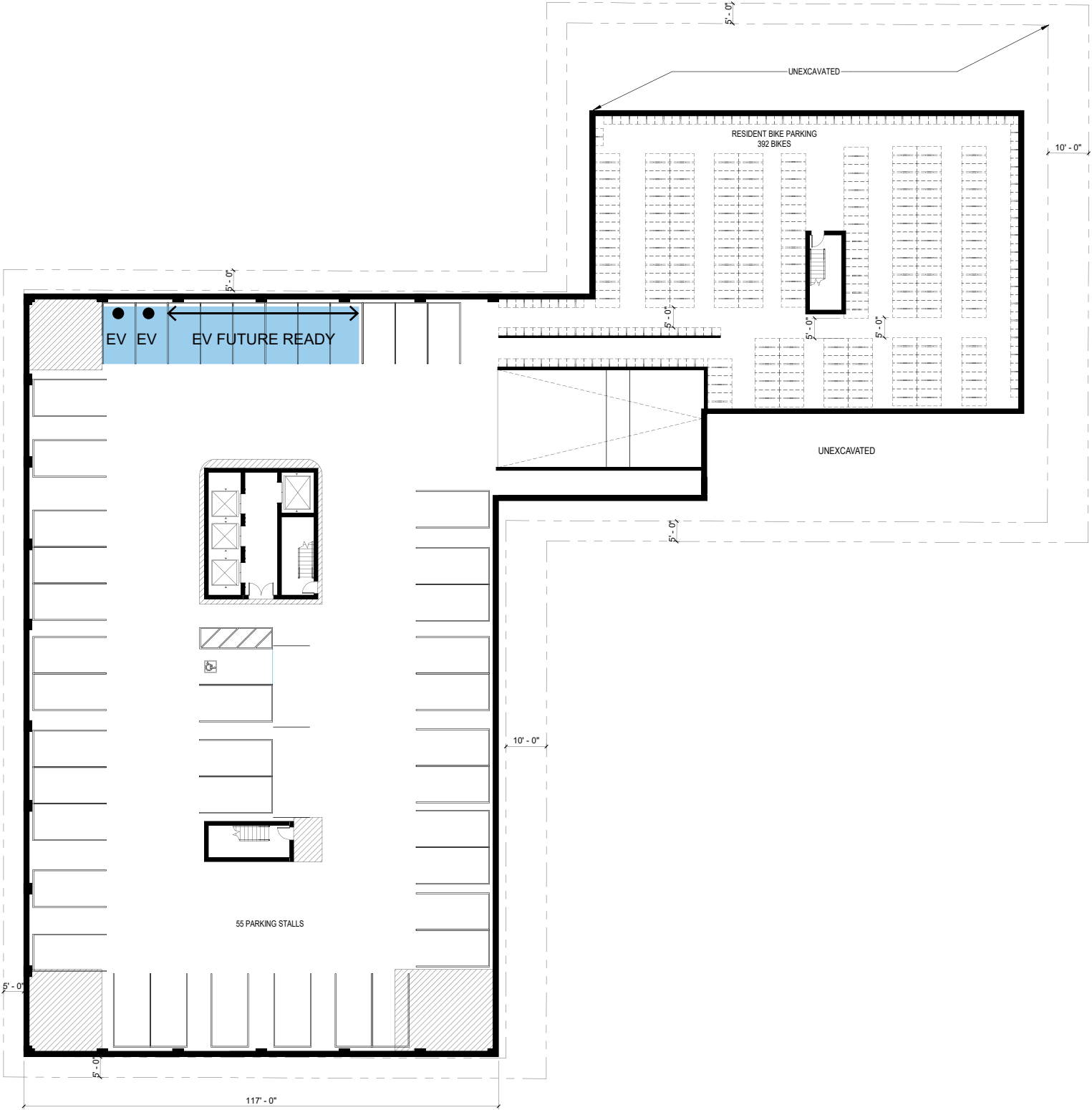
LOCATOR MAP




SITE PLAN

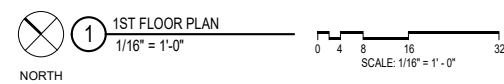
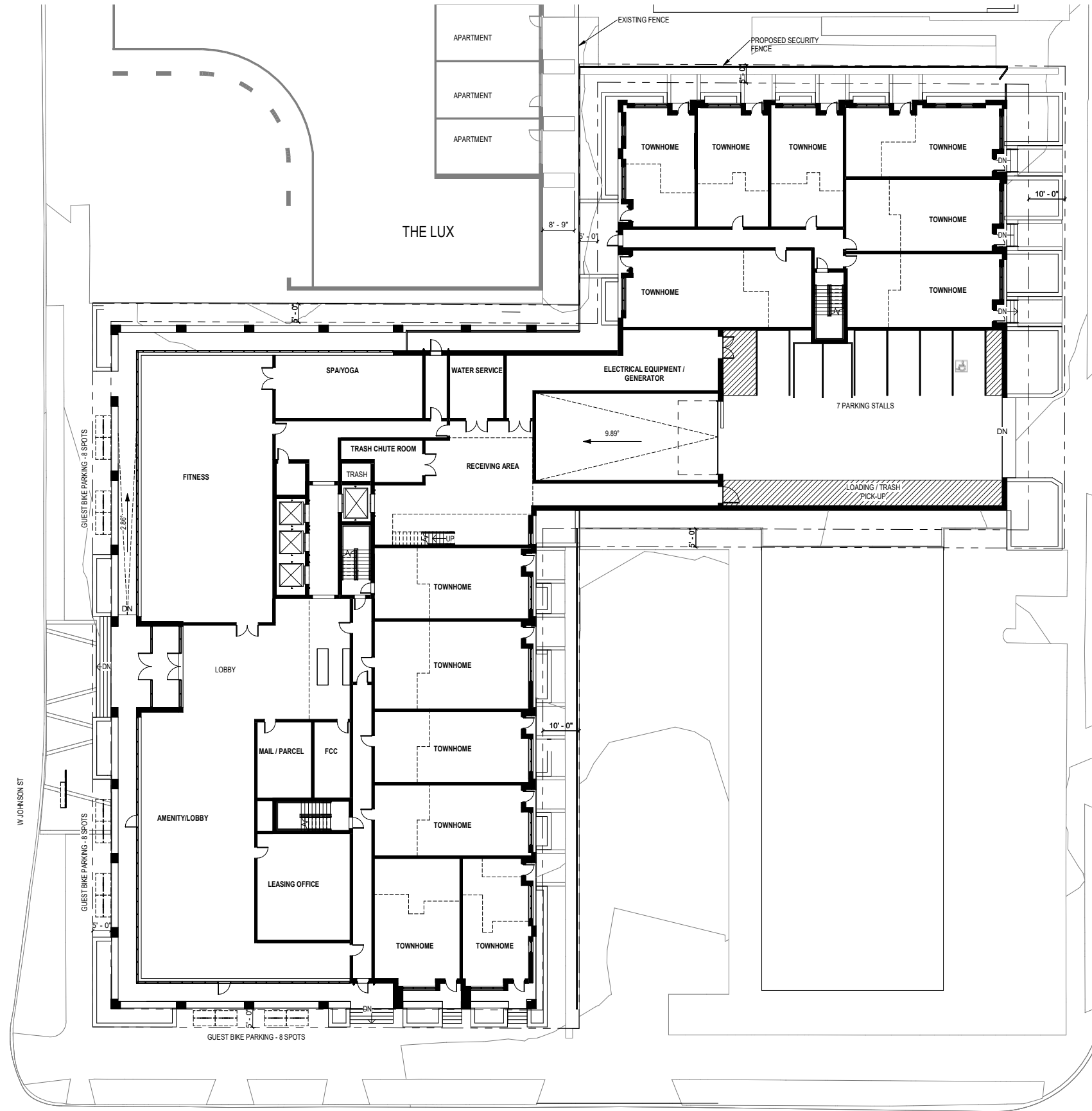


FLOOR PLAN - LOWER LEVEL




1 LOWER LEVEL PLAN
 1/16" = 1'-0"
 0 4 8 16 32
 SCALE: 1/16" = 1'-0"

FLOOR PLAN - 1ST - BEFORE REVISIONS

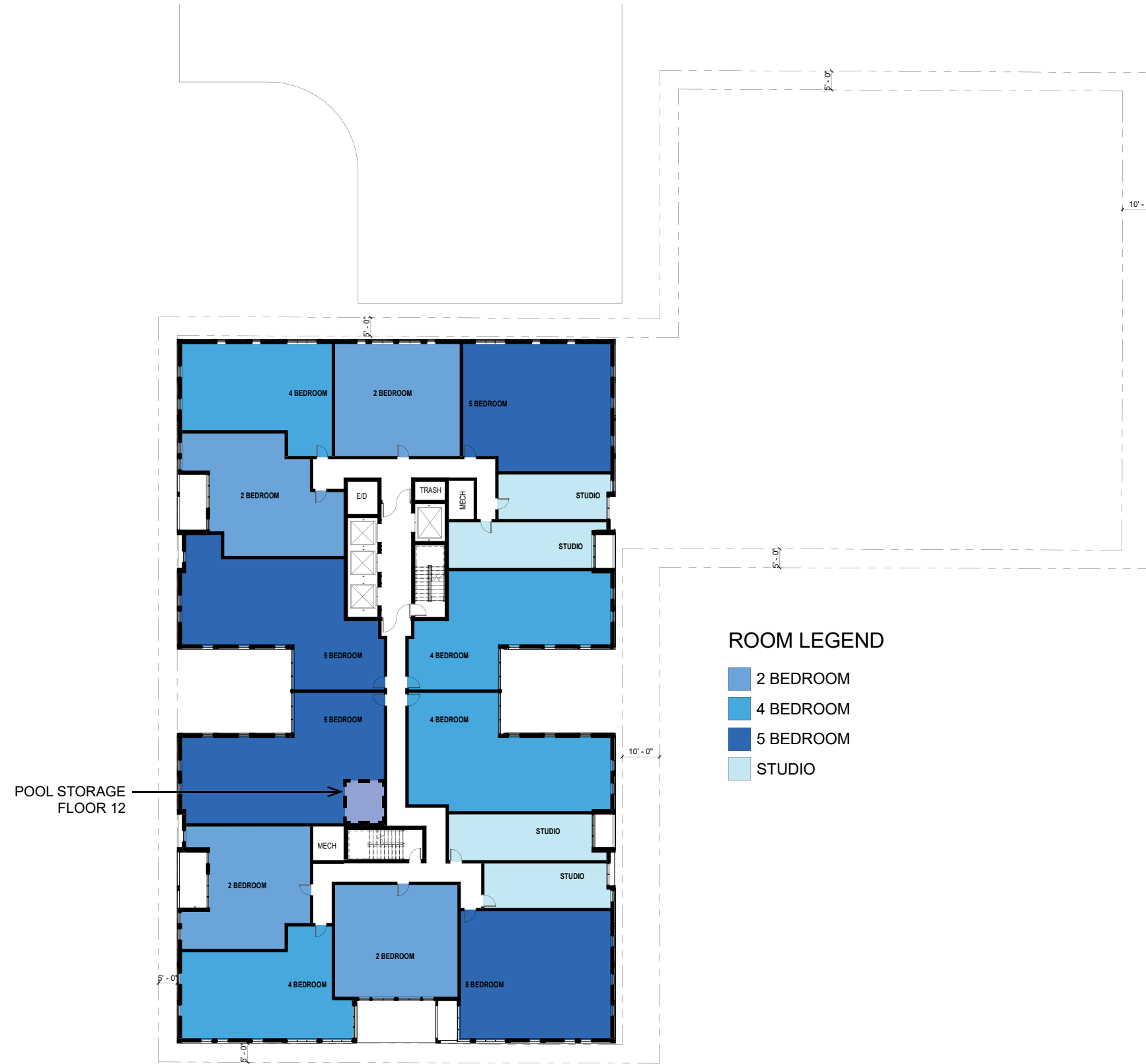


FLOOR PLAN - 1ST - PROPOSED REVISIONS




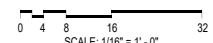
1 1ST FLOOR PLAN
 1/16" = 1'-0"
 SCALE: 1/16" = 1'-0"

FLOOR PLAN - 8TH-12TH

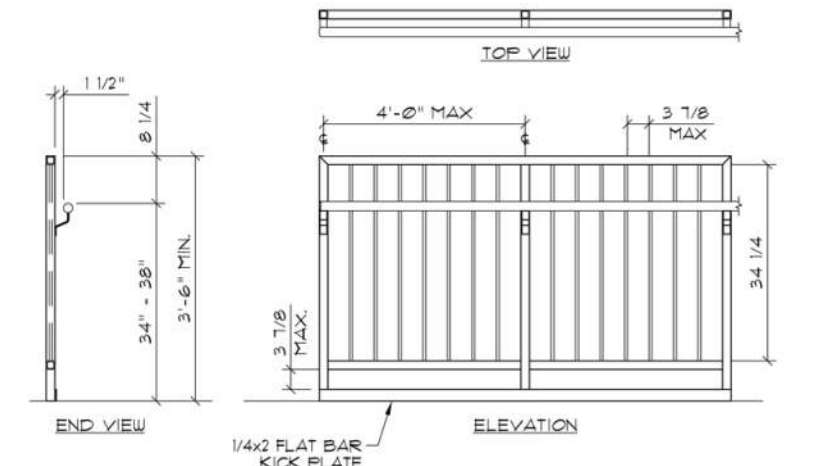
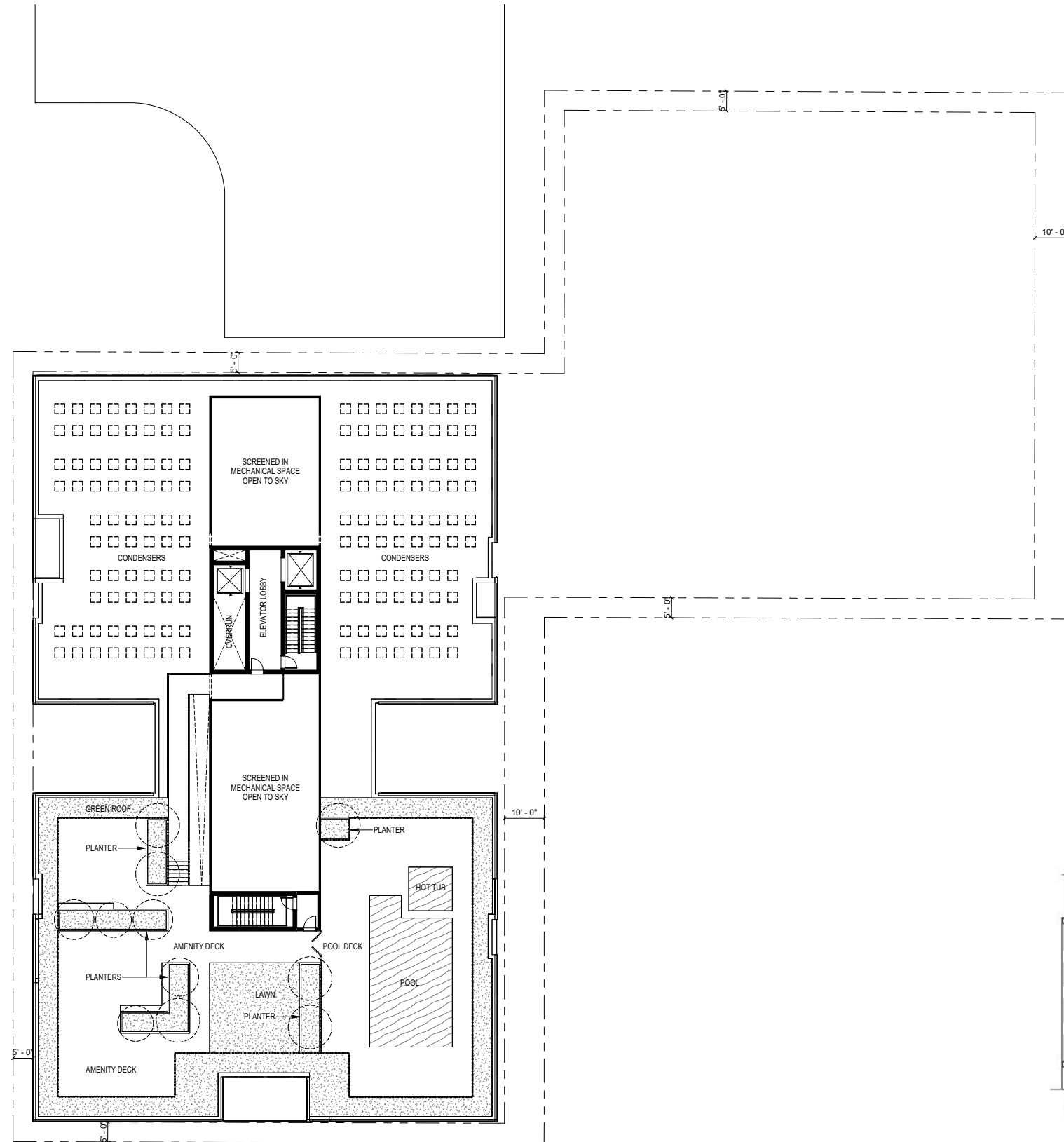


ROOM LEGEND

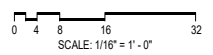
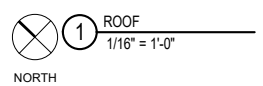
- 2 BEDROOM
- 4 BEDROOM
- 5 BEDROOM
- STUDIO


1 8TH - 12TH FLOOR PLAN
 1/16" = 1'-0"
 SCALE: 1/16" = 1'-0"


FLOOR PLAN - ROOF



RAILING DETAIL - METAL PICKET, WHITE, HANDRAIL ONLY WHERE REQUIRED



LANDSCAPE CONCEPT - SITE - BEFORE REVISIONS



888 south michigan avenue
 suite 1000 chicago, illinois 60605
 tel 312.427.7240 fax 312.427.7241
 www.site-design.com

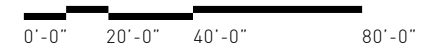
CORE SPACES JOHNSON AND BASSETT, MADISON , WISCONSIN

Schematic Design, Project Number: 9591
 Jan 27th, 2023



LEGEND:

- ① PARKWAY W/ EXISTING TREE
- ② PROPOSED SHADE TREE
- ③ ENTRY PLAZA W/ SPECIALTY PAVER
- ④ BENCH
- ⑤ BIKE RACKS
- ⑥ RAISED PLANTERS
- ⑦ PLANTER ALONG BUILDING FACADE
- ⑧ PROPOSED ORNAMENTAL TREE
- ⑨ LANDSCAPE SCREENING
- ⑩ PRIVATE ENTRY



1 CONCEPT 1 A- PLAN
 SCALE: 1" = 30'-0"



LANDSCAPE CONCEPT - SITE - PROPOSED REVISIONS



888 south michigan avenue
 suite 1000 chicago, illinois 60605
 tel 312.427.7240 fax 312.427.7241
 www.site-design.com

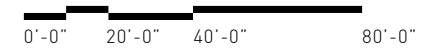
CORE SPACES JOHNSON AND BASSETT, MADISON , WISCONSIN

Schematic Design, Project Number: 9591
 Feb 9th, 2023



LEGEND:

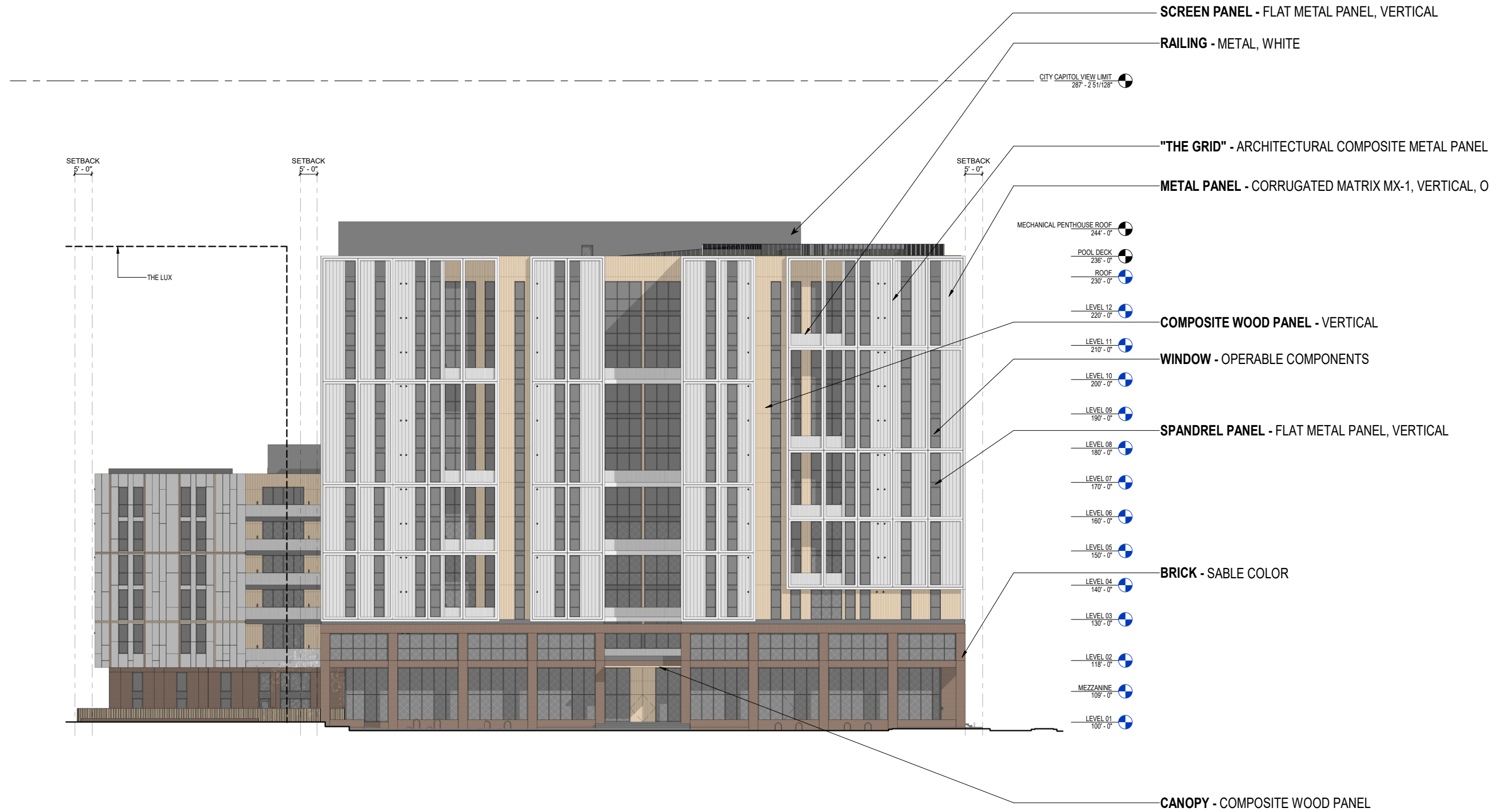
- 1 PARKWAY W/ EXISTING TREE
- 2 PROPOSED SHADE TREE
- 3 ENTRY PLAZA W/ SPECIALTY PAVER
- 4 BENCH
- 5 BIKE RACKS
- 6 RAISED PLANTERS
- 7 PLANTER ALONG BUILDING FACADE
- 8 PROPOSED ORNAMENTAL TREE
- 9 LANDSCAPE SCREENING
- 10 PRIVATE ENTRY
- 11 LANDSCAPE LIGHTING



1 CONCEPT 1 A- PLAN
 SCALE: 1" = 30'-0"



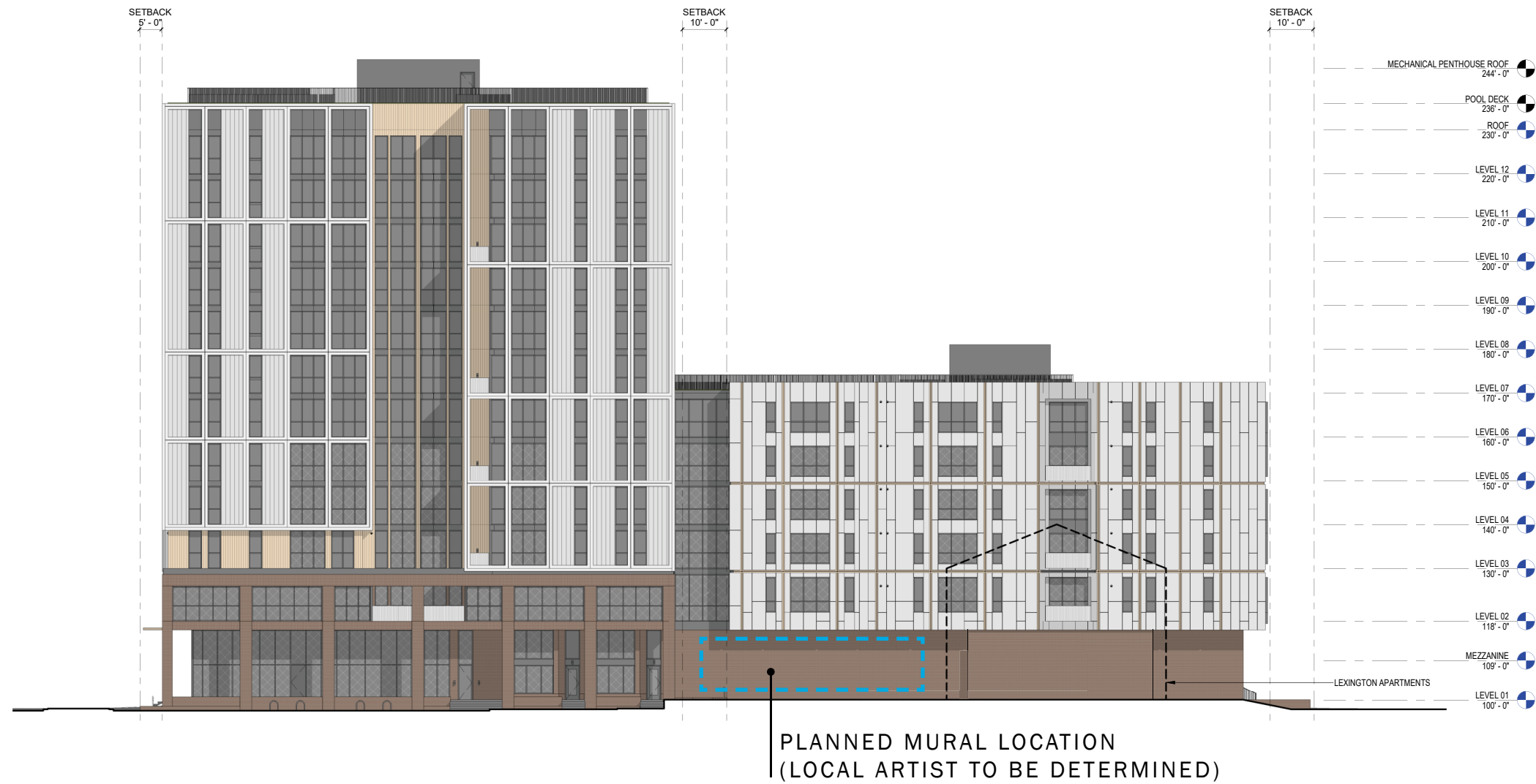
ELEVATION - NW / JOHNSON STREET



① ELEVATION - WEST
1/16" = 1'-0"
SCALE: 1/16" = 1'-0"

ELEVATION - SW / BASSETT STREET

CITY CAPITOL VIEW LIMIT
287' - 2 51/128"



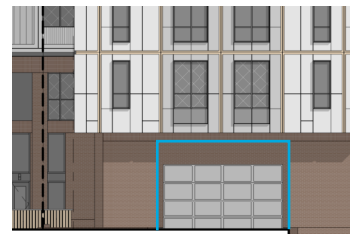
① ELEVATION - SOUTH
1/16" = 1'-0"
0 4 8 16 32
SCALE: 1/16" = 1'-0"

ELEVATION - SE / DAYTON STREET

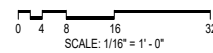
CITY CAPITOL VIEW LIMIT
287' - 2 51/128"



OPENING HEIGHT
PRIOR TO REVISION



① ELEVATION - EAST
1/16" = 1'-0"



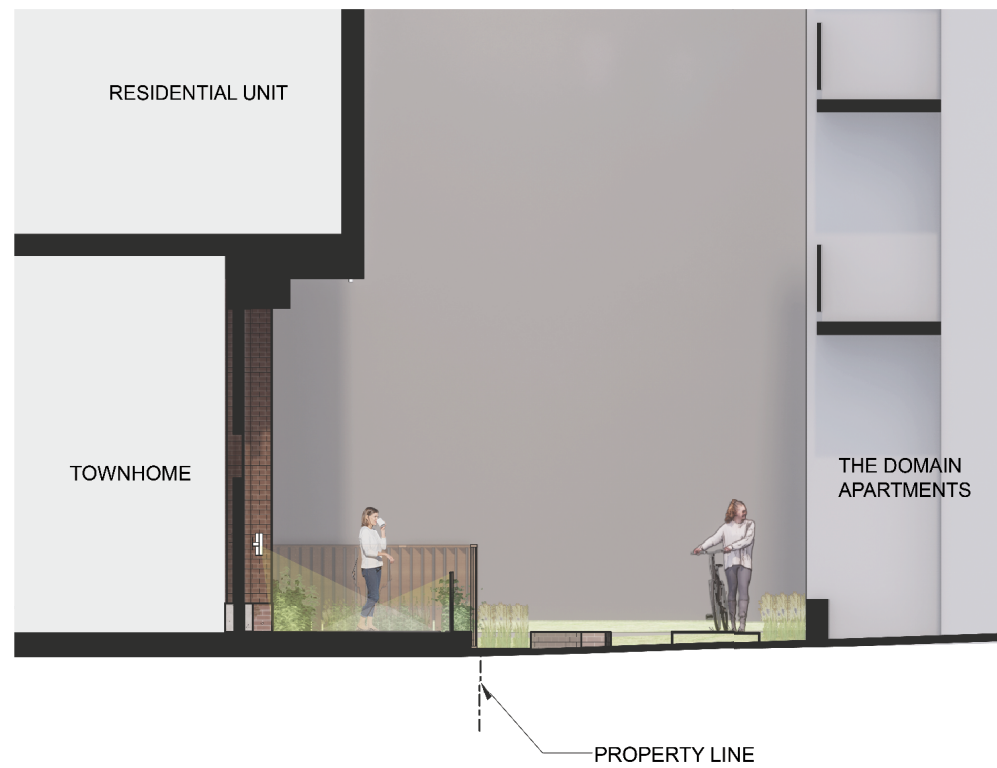
ENLARGED TOWNHOME ELEVATIONS AND SECTIONS



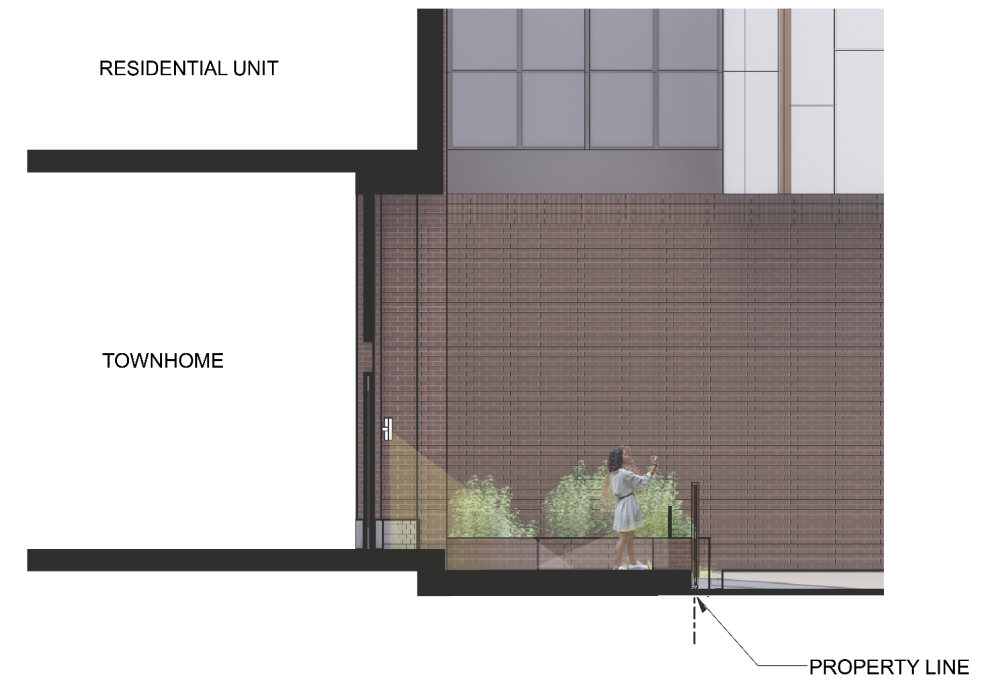
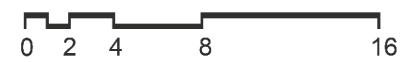
TOWNHOME ELEVATION - AT DOMAIN PROPERTY LINE



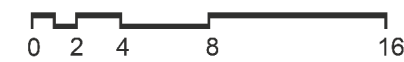
TOWNHOME ELEVATION - AT LEXINGTON PROPERTY LINE



SECTION A - AT DOMAIN PROPERTY LINE



SECTION B - AT LEXINGTON PROPERTY LINE



PERSPECTIVE - JOHNSON & BASSETT



ELEVATION PERSPECTIVE - JOHNSON ST.



PERSPECTIVE - BASSETT ST.



PERSPECTIVE - DAYTON ST.



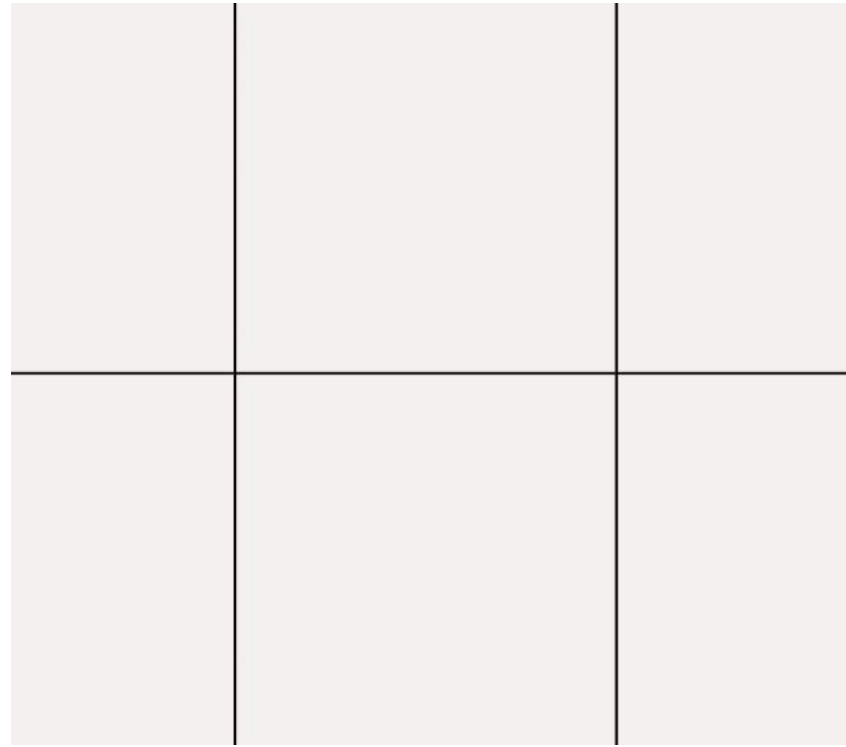
ELEVATION PERSPECTIVE - DAYTON ST.



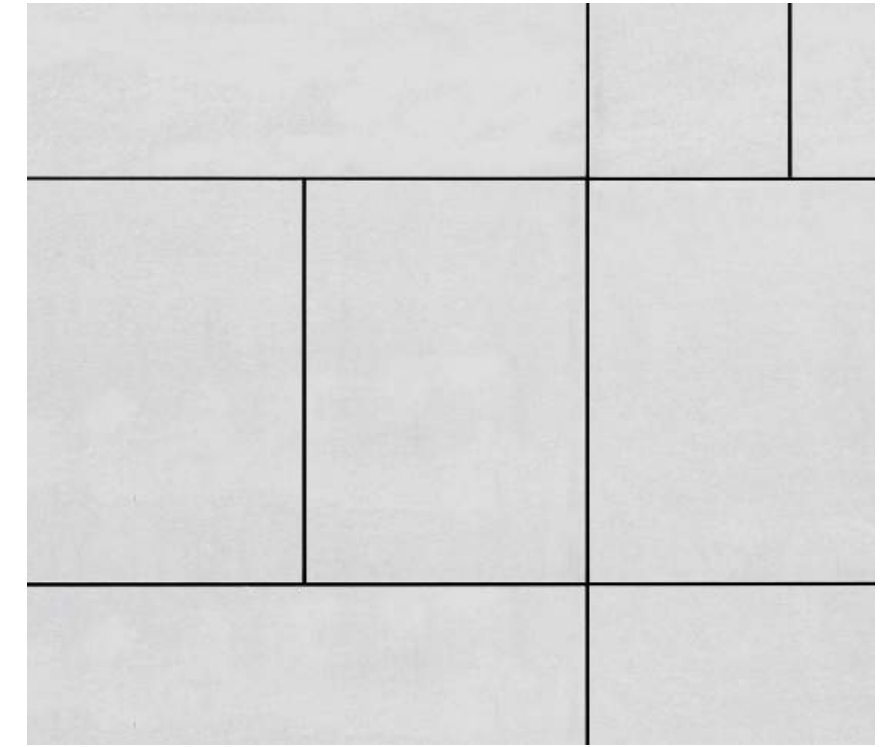
EXTERIOR MATERIALS



COMPOSITE WOOD: COMPOSITE WOOD SIDING, 5 1/2" VERTICAL PLANKS,
BASIS OF DESIGN - NEWTECHWOOD TONGUE AND GROOVE, JAPANESE OAK



METAL PANEL (GRID): ALUMINUM COMPOSITE METAL PANEL,
BASIS OF DESIGN - ALPOLIC PE, WHITE



FIBER CEMENT PANEL: FIBER CEMENT PANEL, REVEAL TRIM
BASIS OF DESIGN - JAMES HARDIE ARCHITECTURAL COLLECTION, OFF-WHITE



BRICK: MODULAR CONCRETE BRICK RUNNING BOND WITH SOLDIER COURSES
BASIS OF DESIGN - COUNTY MATERIALS HERITAGE COLLECTION, SABLE



METAL PANEL (INFILL): SINGLE SKIN METAL PANEL VERTICAL 2" BOX RIB,
BASIS OF DESIGN - MORIN MATRIX MX-1, OFF-WHITE



METAL PANEL (MECHANICAL SCREEN): INSULATED METAL PANEL,
BASIS OF DESIGN - CENTRIA VERSAWALL V+, DARK GRAY

Kahler Slater

Milwaukee | Madison | Chicago | Richmond

www.kahlerslater.com