

---

# STUDENT HOUSING

JOHNSON STREET | MADISON, WISCONSIN

---

CORE MADISON BASSETT, LLC

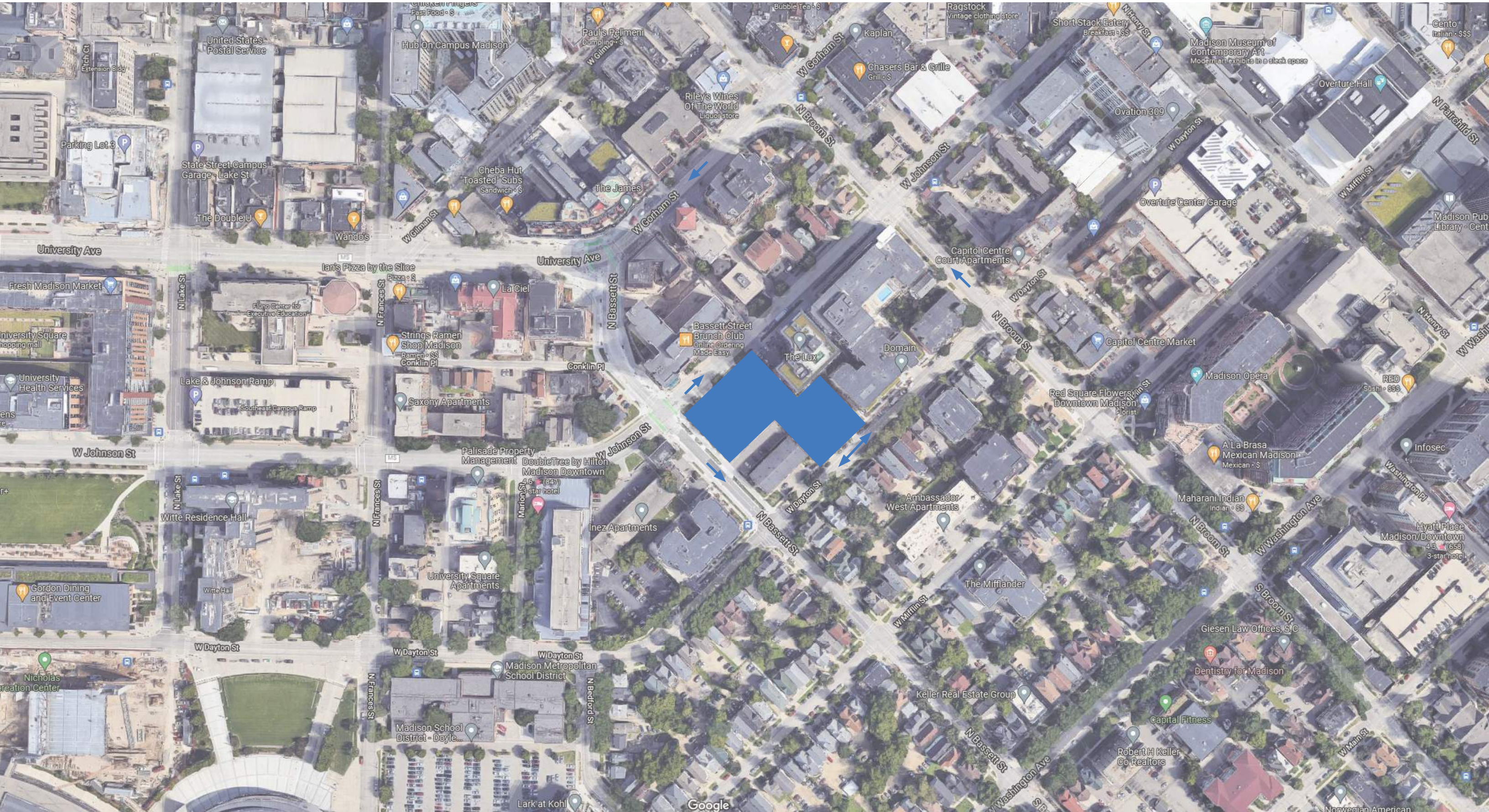
UDC FORMAL SUBMITTAL

MARCH 13, 2023

**Kahler Slater**

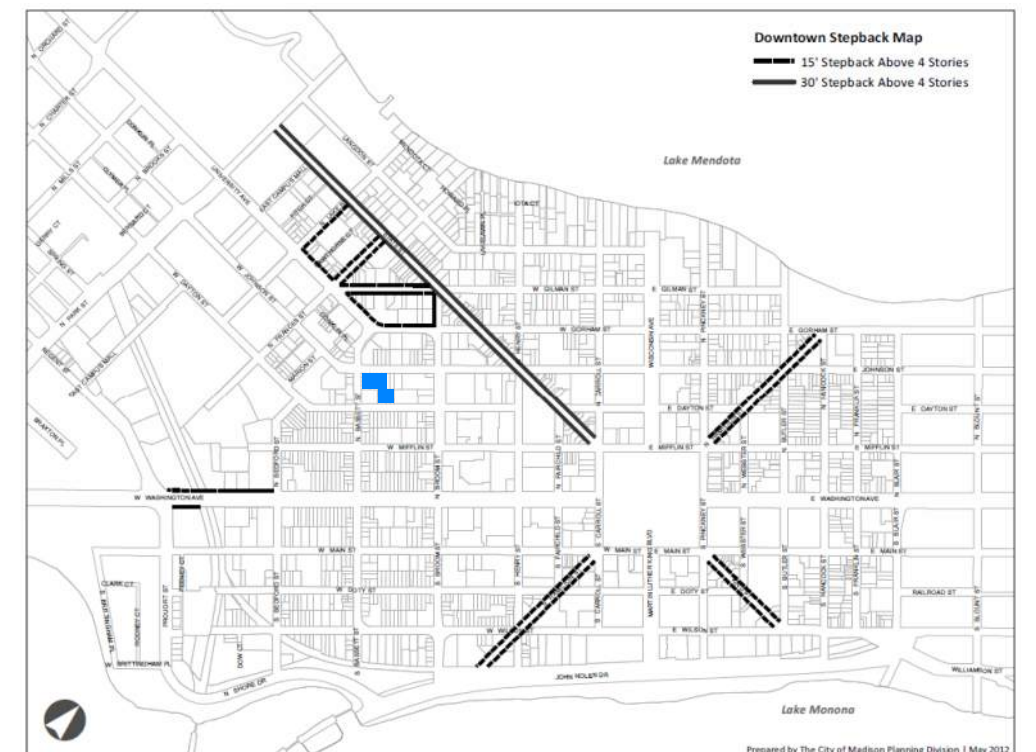
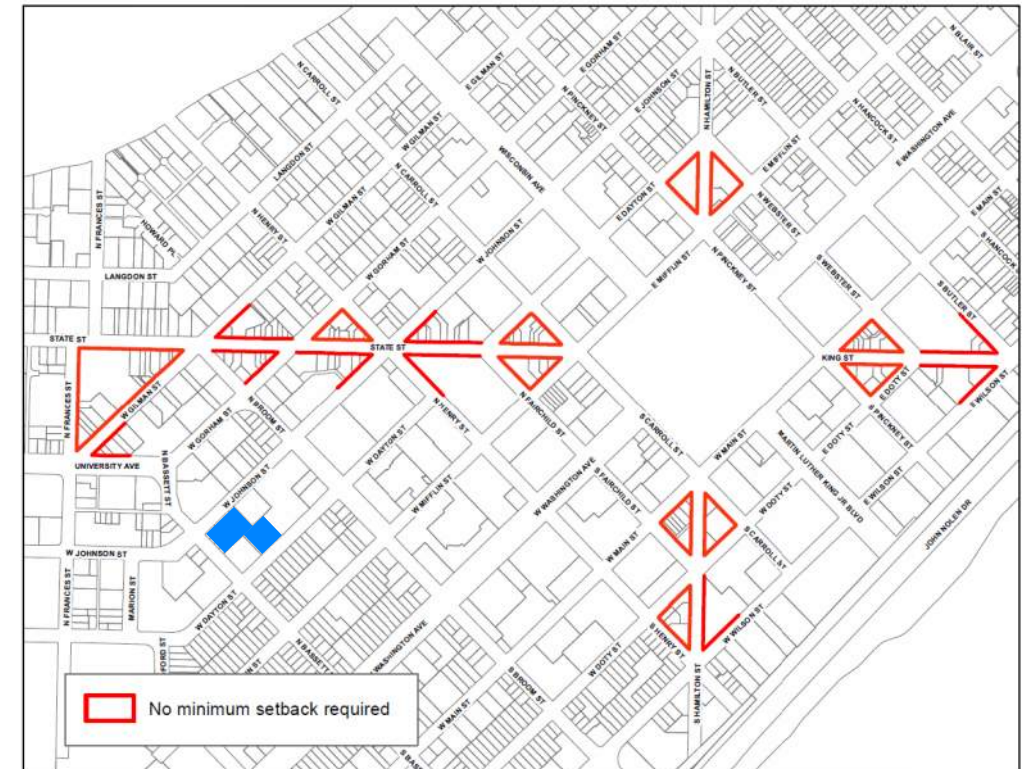
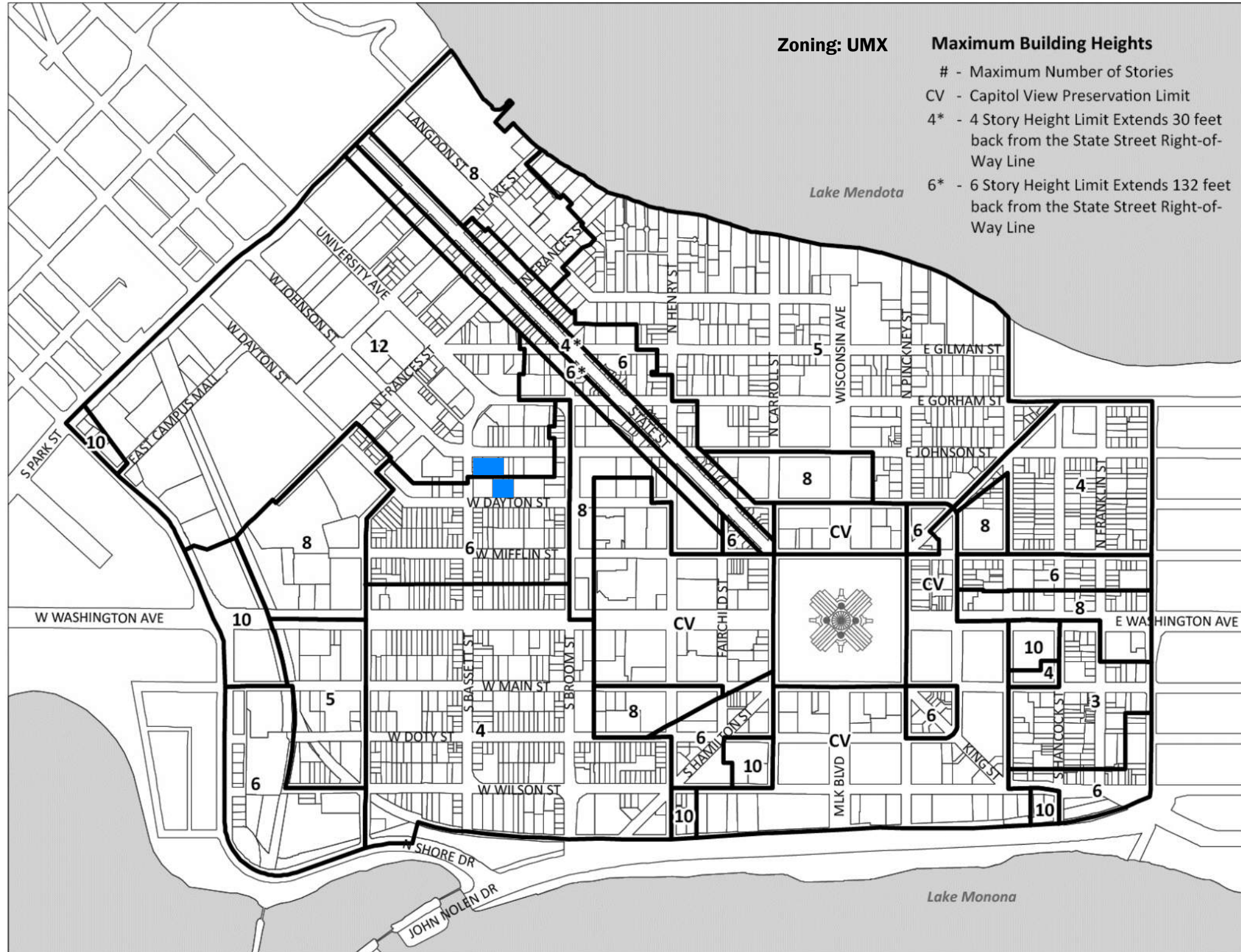


# LOCATOR MAP





# ZONING INFORMATION





# SITE CONTEXT - AERIAL





# SITE CONTEXT - STREET VIEWS



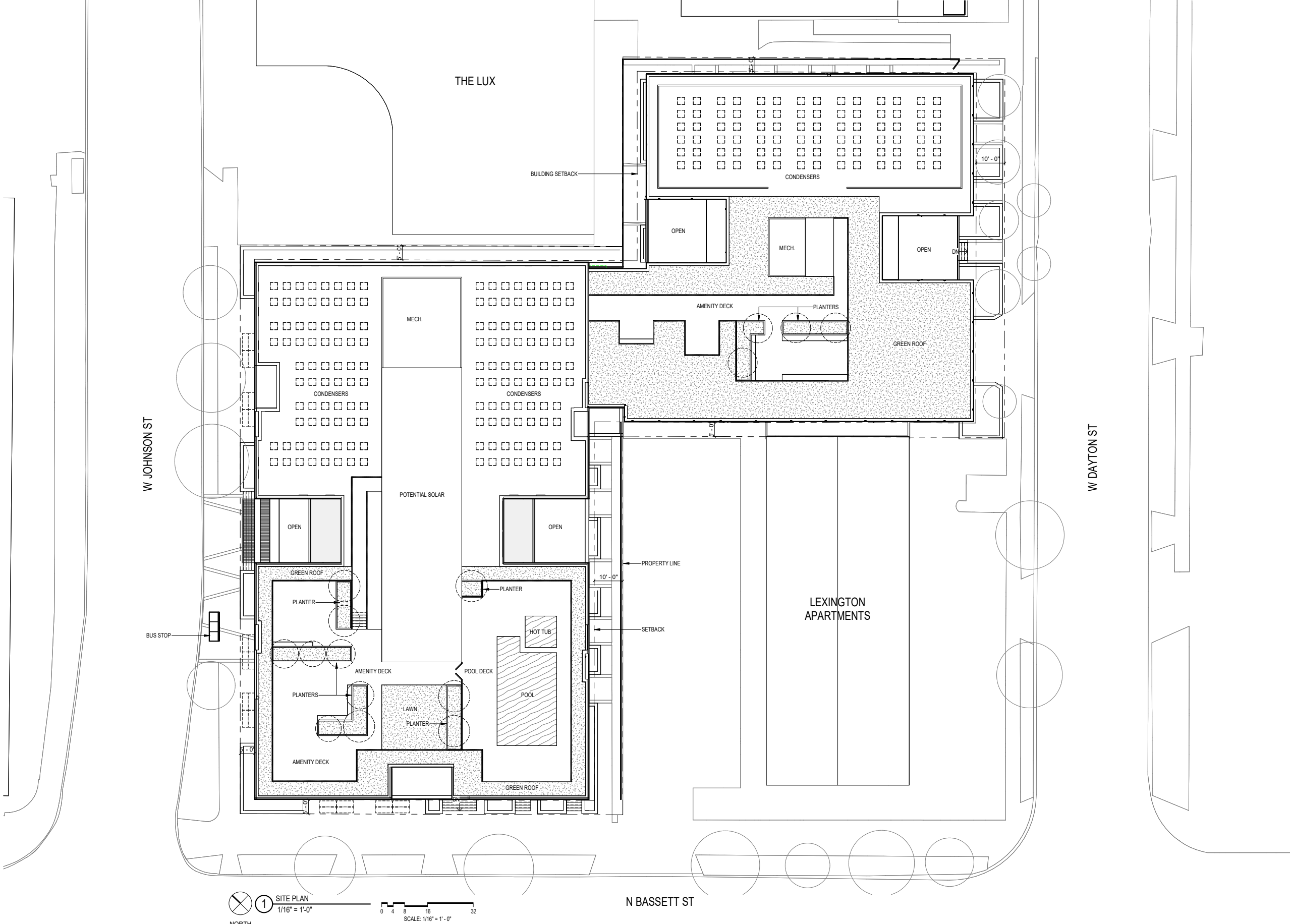


# SITE CONTEXT - STREET VIEWS





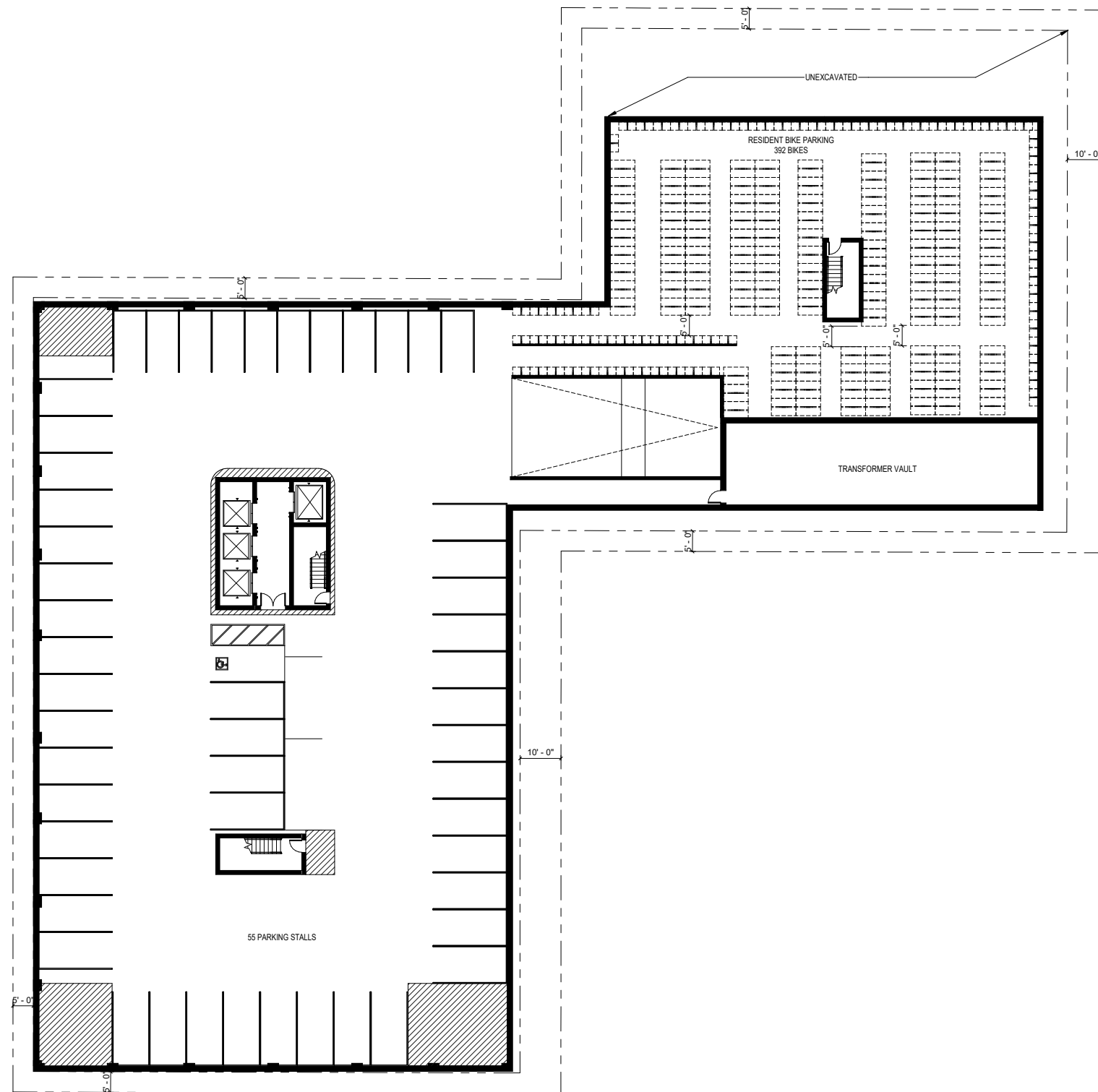
# SITE PLAN



1 SITE PLAN  
 1/16" = 1'-0"  
 SCALE: 1/16" = 1'-0"  
 NORTH



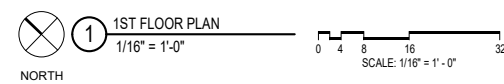
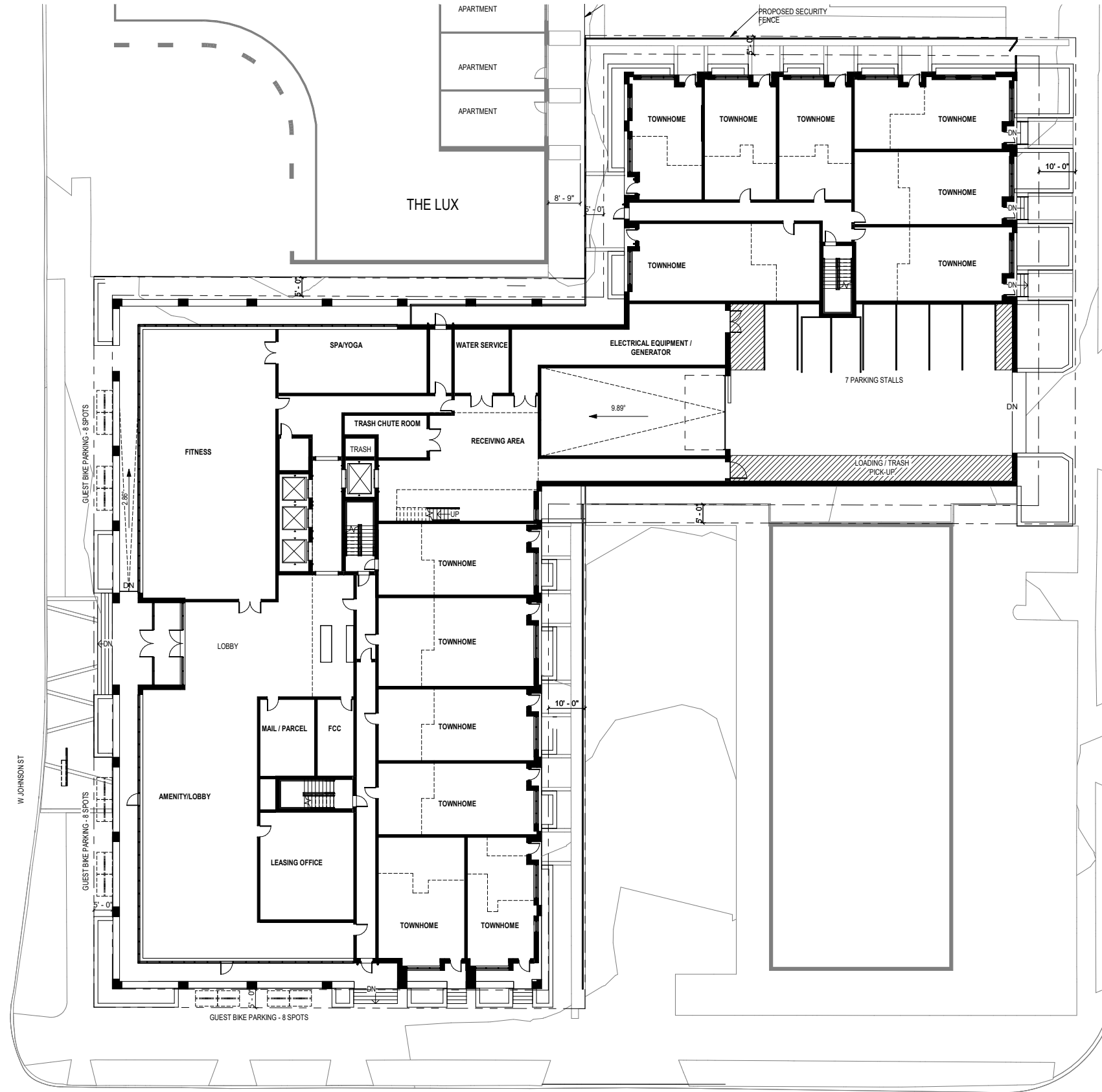
# FLOOR PLAN - LOWER LEVEL



1 LOWER LEVEL PLAN  
1/16" = 1'-0"  
SCALE: 1/16" = 1'-0"



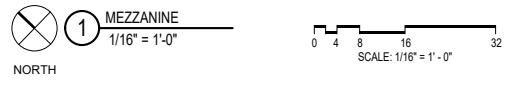
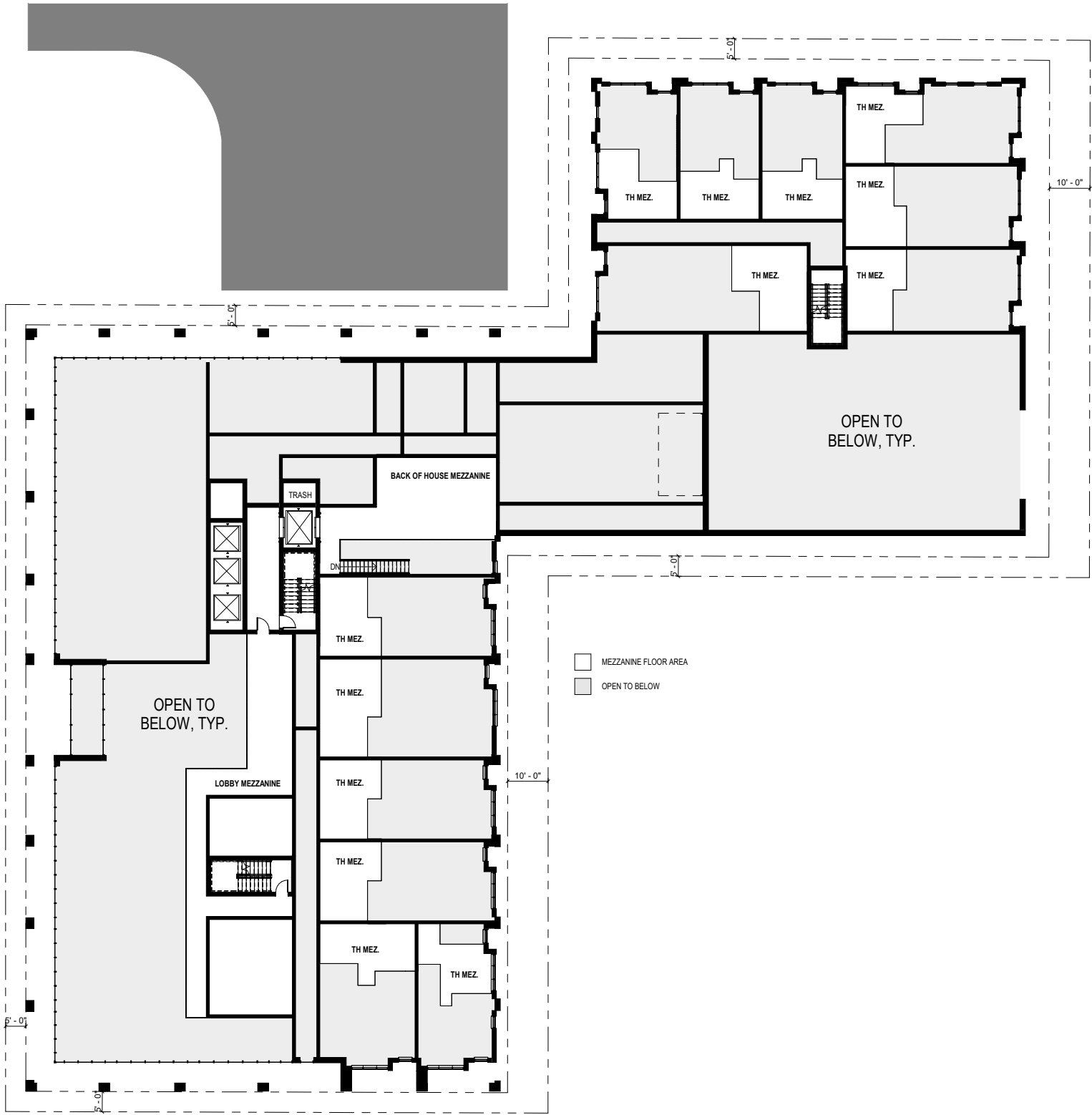
# FLOOR PLAN - 1ST



N BASSETT ST

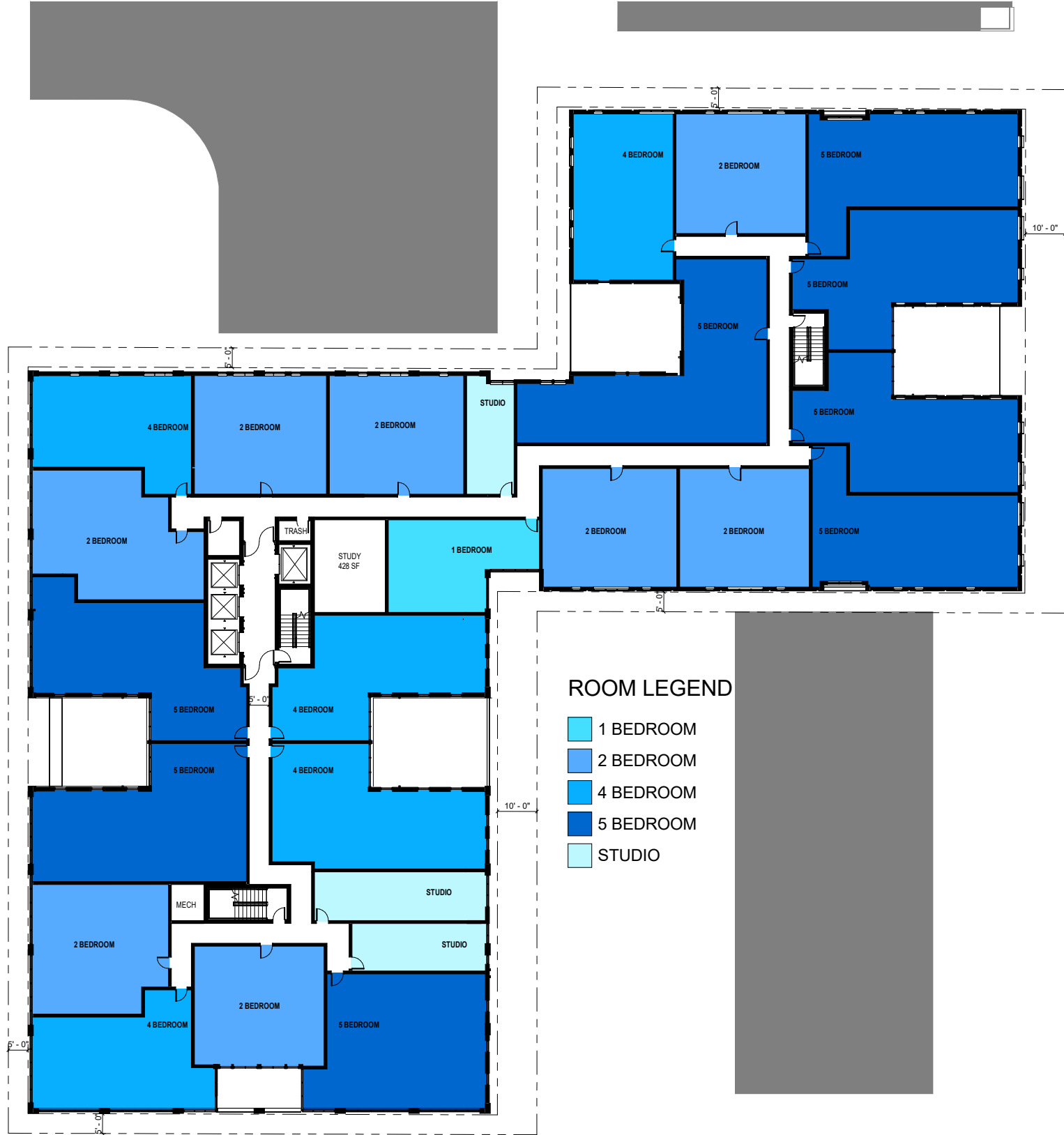


# FLOOR PLAN - TOWNHOMES UPPER LEVEL





# FLOOR PLAN - 2ND



### ROOM LEGEND

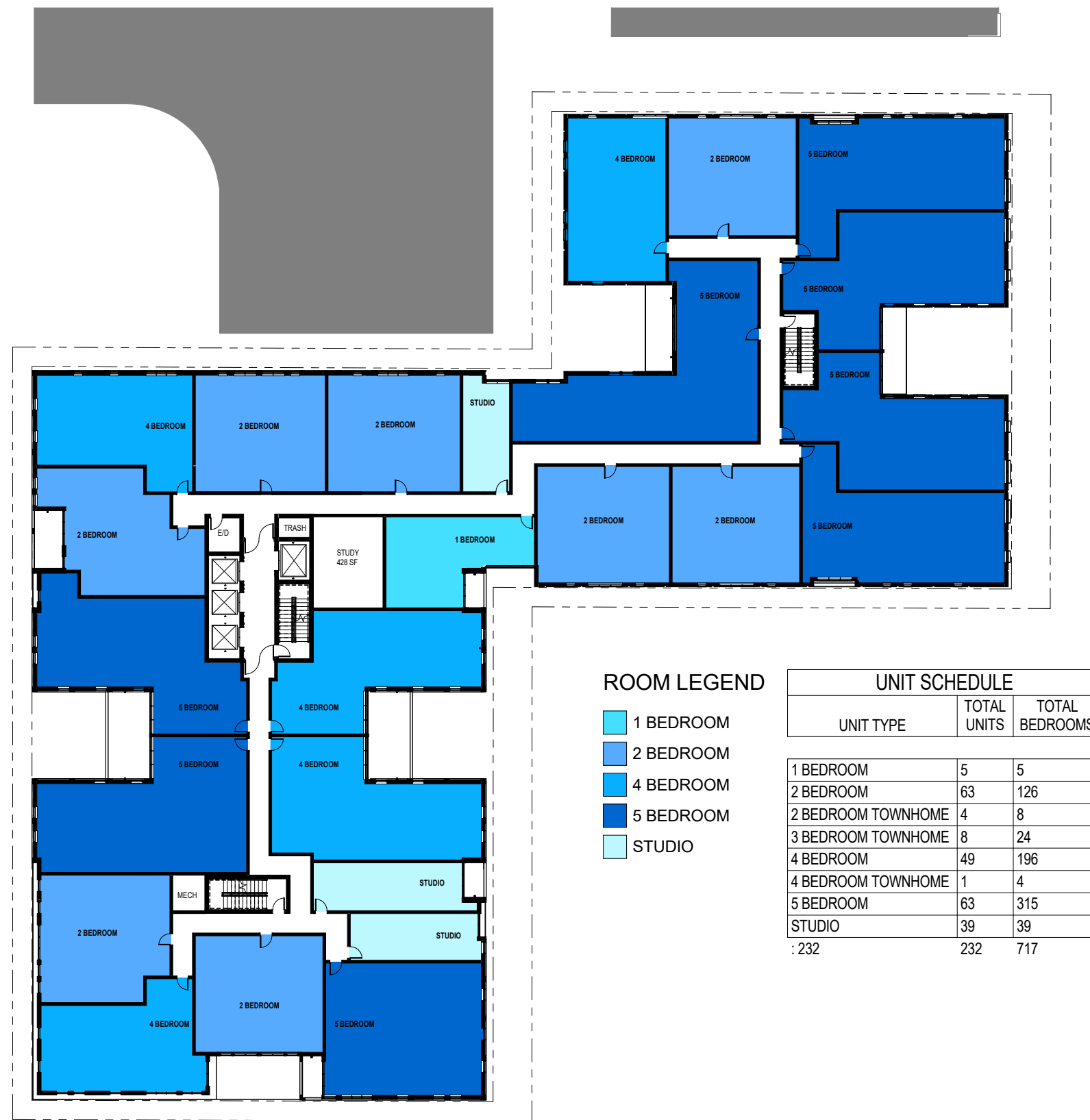
- 1 BEDROOM
- 2 BEDROOM
- 4 BEDROOM
- 5 BEDROOM
- STUDIO

1 2ND FLOOR PLAN  
 1/16" = 1'-0"  
 NORTH

0 4 8 16 32  
 SCALE: 1/16" = 1'-0"



# FLOOR PLAN - 3RD-6TH




1 3RD - 6TH TYPICAL FLOOR PLAN  
 1/16" = 1'-0"  
 NORTH

0 4 8 16 32  
 SCALE: 1/16" = 1'-0"



# FLOOR PLAN - 7TH



### ROOM LEGEND

- 2 BEDROOM
- 4 BEDROOM
- 5 BEDROOM
- AMENITY
- STUDIO

1 7TH FLOOR PLAN  
 1/16" = 1'-0"  
 SCALE: 1/16" = 1'-0"  
 NORTH



# FLOOR PLAN - 8TH-12TH



### ROOM LEGEND

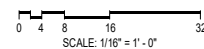
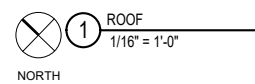
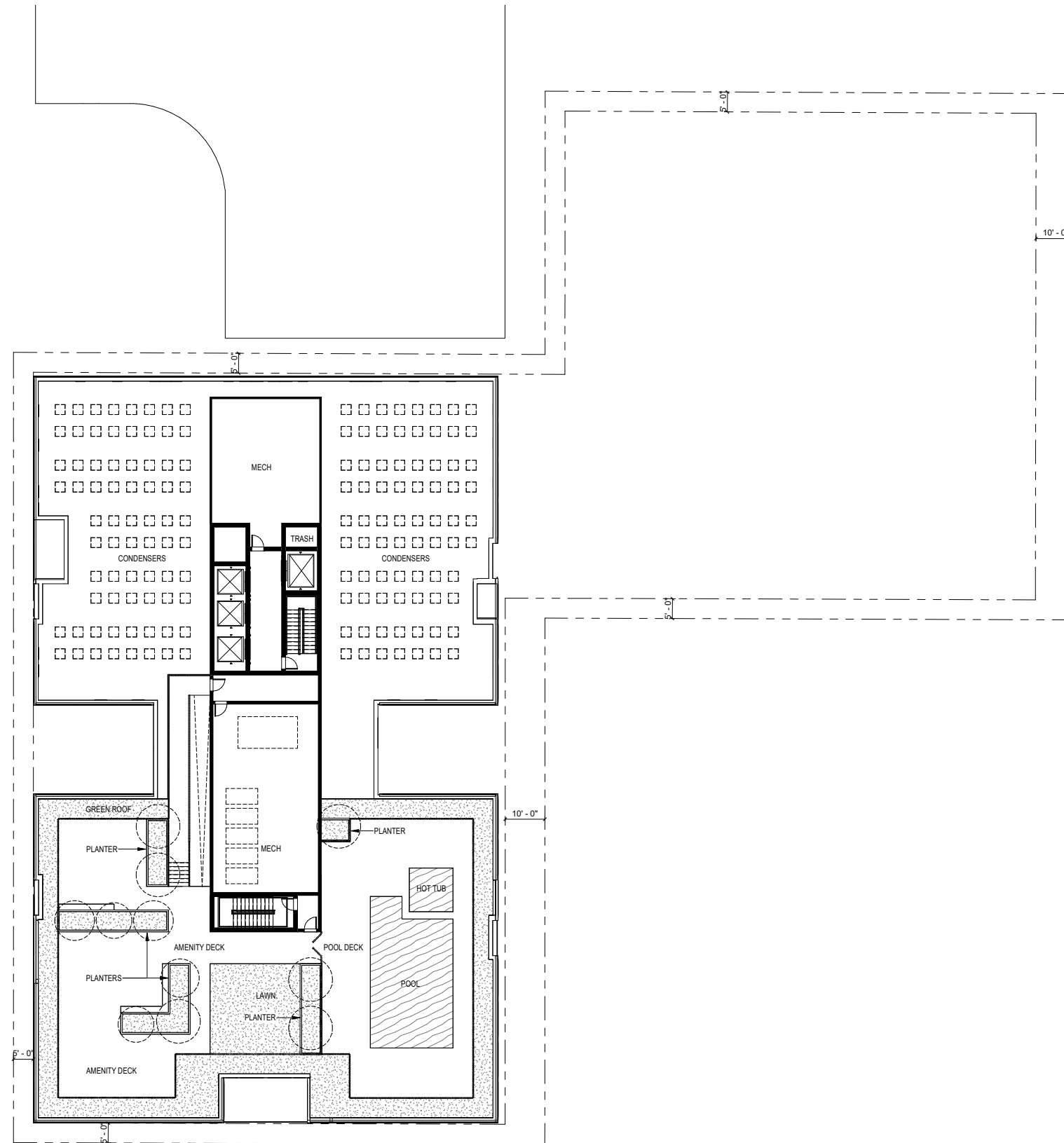
- 2 BEDROOM
- 4 BEDROOM
- 5 BEDROOM
- STUDIO

1 8TH - 12TH FLOOR PLAN  
 1/16" = 1'-0"  
 NORTH

SCALE: 1/16" = 1'-0"



# FLOOR PLAN - ROOF





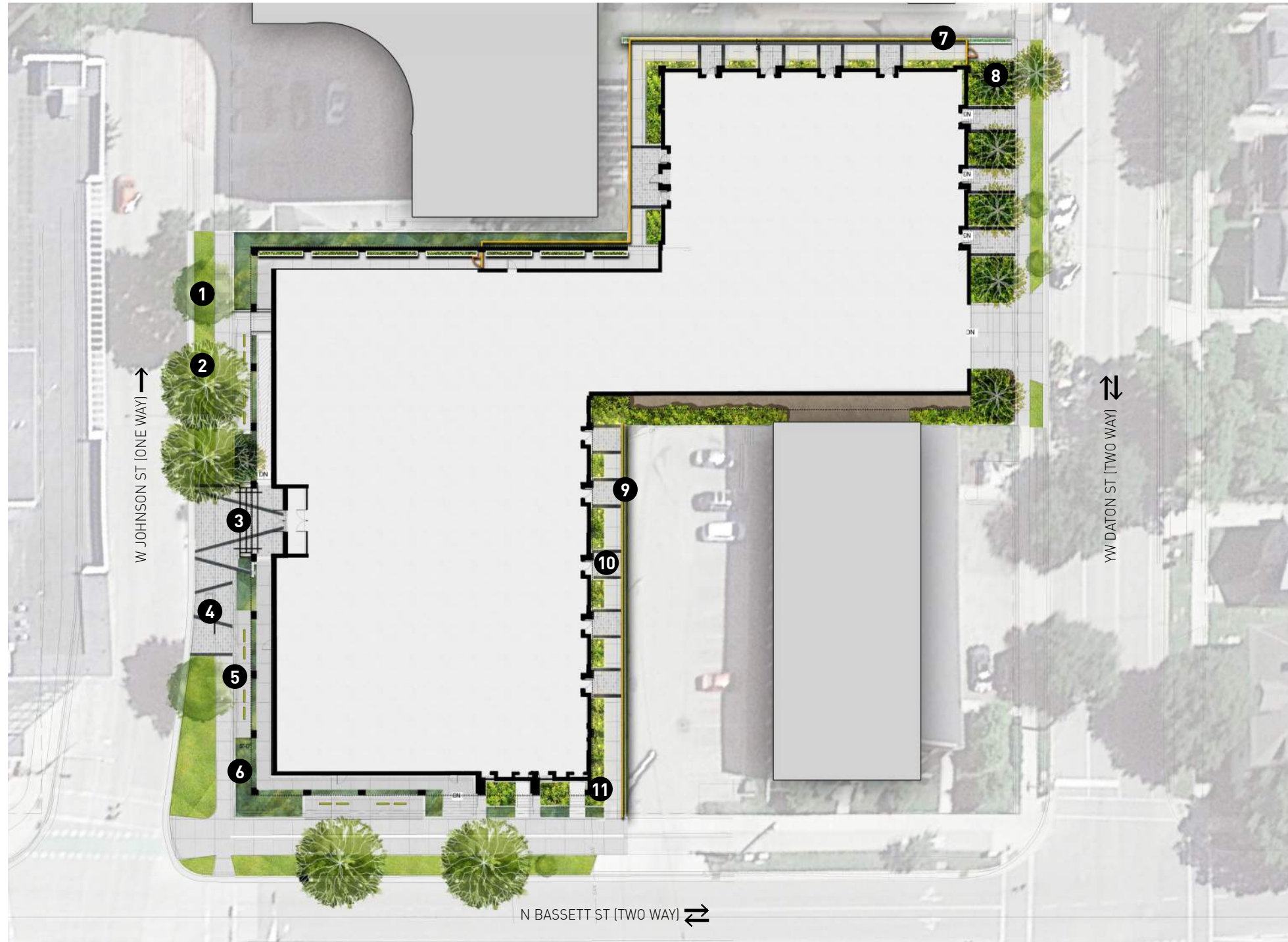
# LANDSCAPE CONCEPT



888 south michigan avenue  
 suite 1000 chicago, illinois 60605  
 tel 312.427.7240 fax 312.427.7241  
 www.site-design.com

## CORE SPACES JOHNSON AND BASSETT, MADISON , WISCONSIN

Schematic Design, Project Number: 9591  
 Feb 9th, 2023



### LEGEND:

- 1 PARKWAY W/ EXISTING TREE
- 2 PROPOSED SHADE TREE
- 3 ENTRY PLAZA W/ SPECIALTY PAVER
- 4 BENCH
- 5 BIKE RACKS
- 6 RAISED PLANTERS
- 7 PLANTER ALONG BUILDING FACADE
- 8 PROPOSED ORNAMENTAL TREE
- 9 LANDSCAPE SCREENING
- 10 PRIVATE ENTRY
- 11 LANDSCAPE LIGHTING

0'-0" 20'-0" 40'-0" 80'-0"

1 CONCEPT 1 A- PLAN  
 SCALE: 1" = 30'-0"





# LANDSCAPE CONCEPT PRECEDENTS



888 south michigan avenue  
suite 1000 chicago, illinois 60605  
tel 312.427.7240 fax 312.427.7241  
www.site-design.com

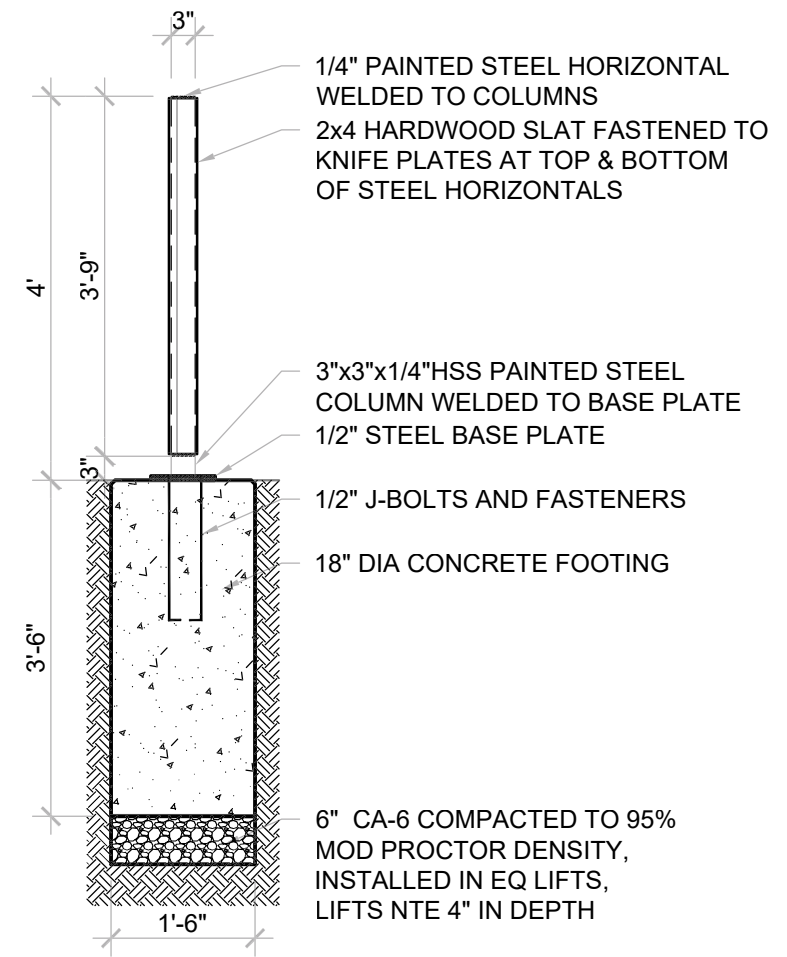
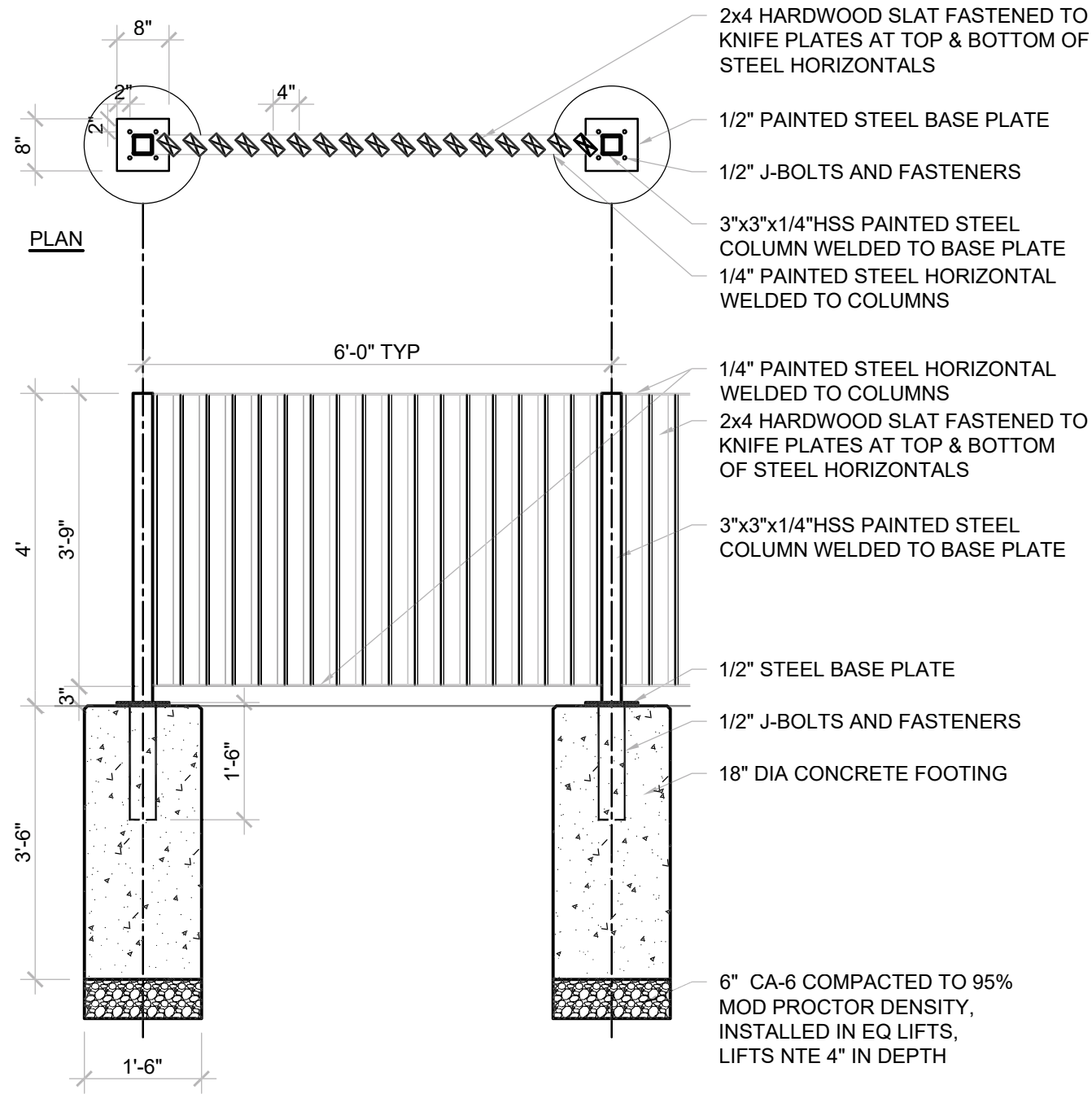
## CORE SPACES JOHNSON AND BASSETT, MADISON , WISCONSIN

Schematic Design, Project Number: 9591  
Feb 9th, 2023





# LANDSCAPE CONCEPT - FENCE DETAIL



3 4'H VERTICAL WOOD SLAT FENCE  
1/2" = 1'-0"

4 4'H VERTICAL WOOD SLAT FENCE POST DETAIL  
1/2" = 1'-0"



# LANDSCAPE CONCEPT - ISOMETRIC ROOFTOP RENDERINGS



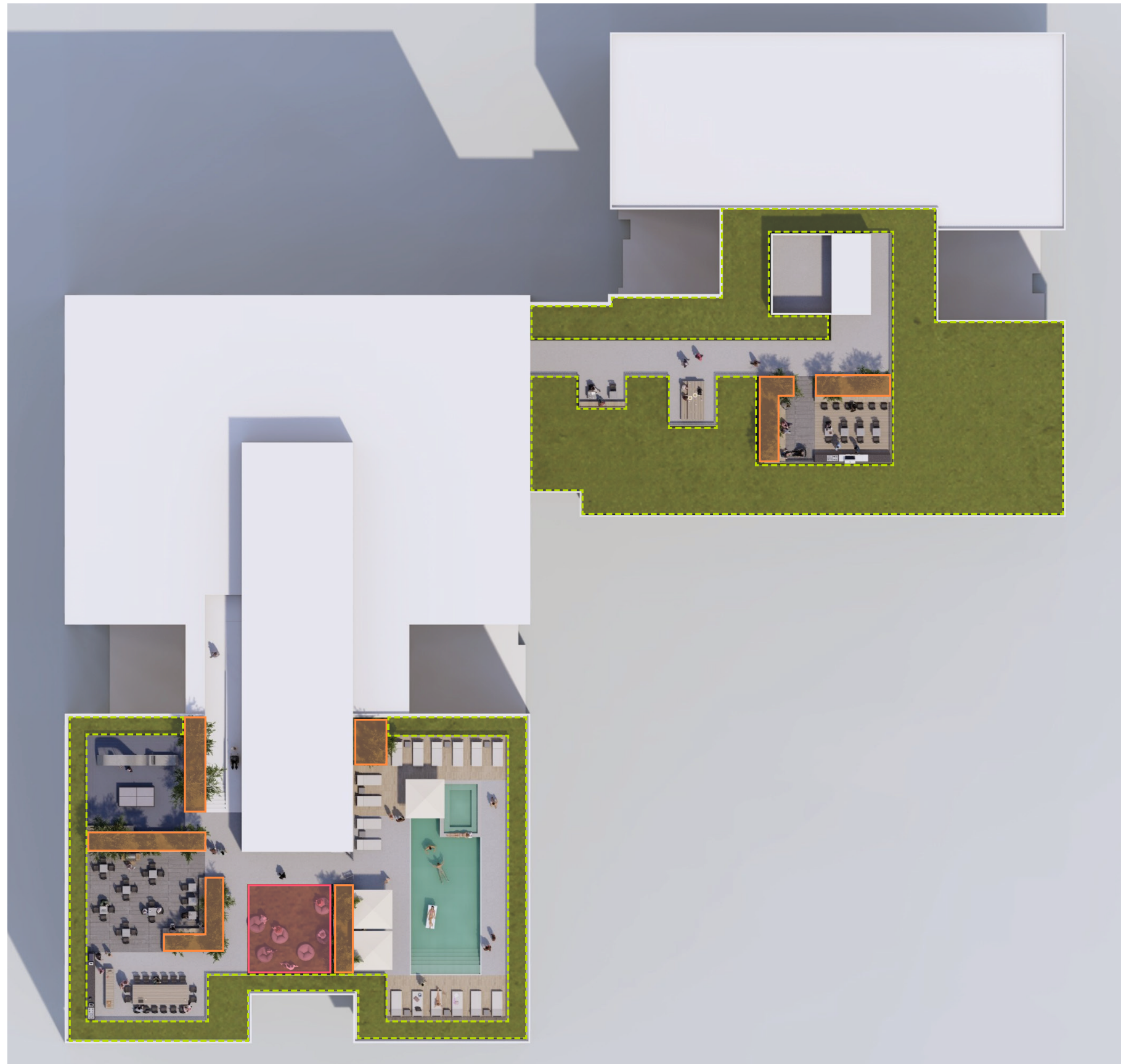
12 STORY ROOF



6 STORY ROOF



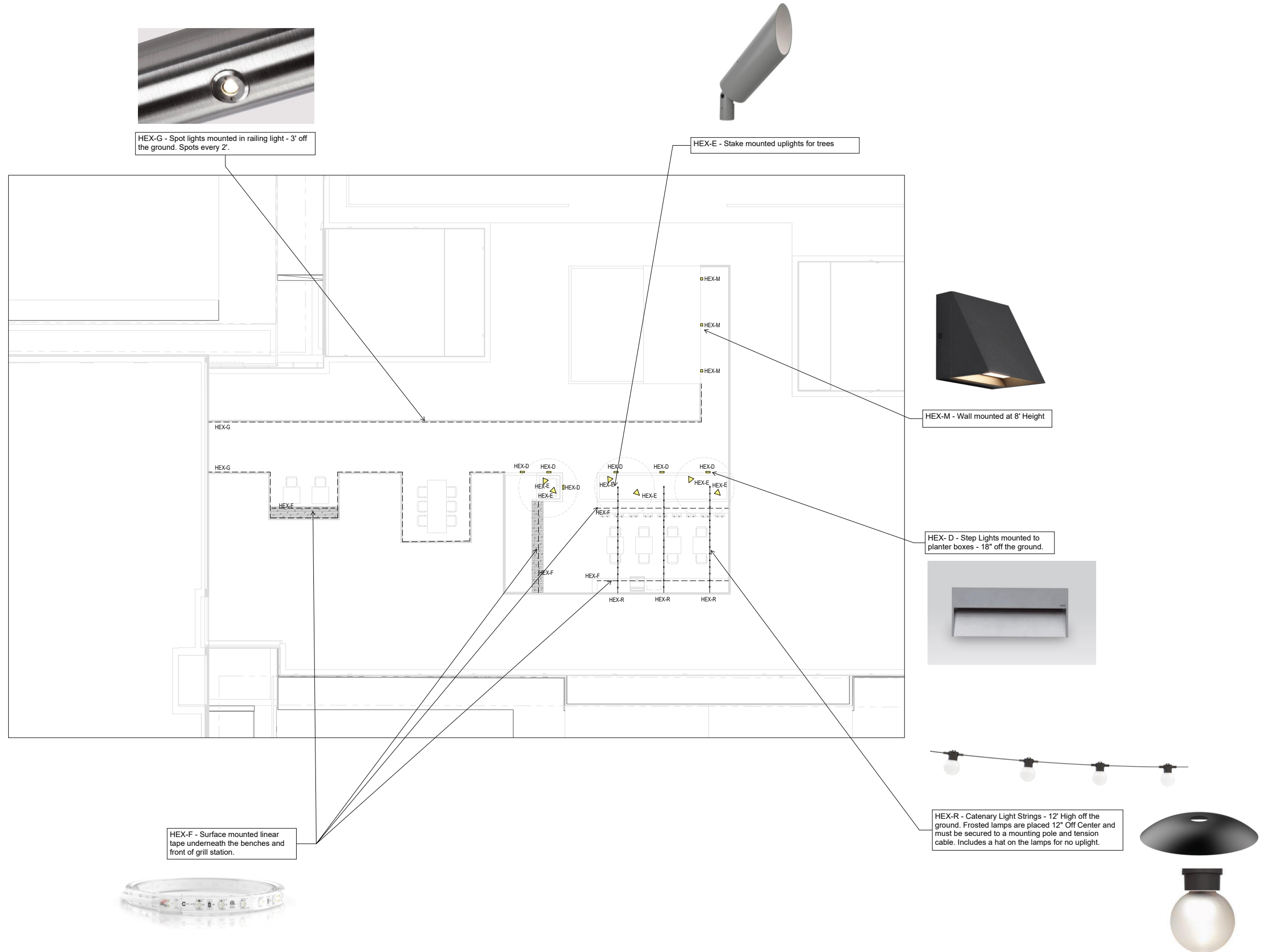
# LANDSCAPE CONCEPT - ROOFTOP LANDSCAPE PLAN



PLANT PALETTE - ROOF LEVELS				
CODE	QTY	BOTANICAL NAME	COMMON NAME	ROOT
<b>RAISED PLANTERS</b>				
UNDERSTORY TREES				
		<i>Amelanchier x grandiflora</i> 'Autumn Brilliance'	Autumn Brilliance Serviceberry	cont
		<i>Cercis canadensis</i>	Eastern Redbud	cont
		<i>Crataegus crus-galli</i> var. <i>inermis</i>	Thornless Cockspur Hawthorn	cont
DECIDUOUS SHRUBS				
		<i>Aronia melanocarpa</i> 'Morton'	Iroquois Beauty Chokeberry	cont
		<i>Ceanothus americanus</i>	New Jersey Tea	cont
		<i>Cornus sericea</i> 'Bergeson Compact'	Bergeson Compact Redosier Dogwood	cont
		<i>Diervilla lonicera</i>	Dwarf Bush-honeysuckle	cont
		<i>Hypericum kalmianum</i> 'Ames'	Ames St. Johnswort	cont
		<i>Rhus aromatica</i> 'Gro-Low'	Grow Low Fragrant Sumac	cont
		<i>Rosa rugosa</i> 'Meitozaure'	Raspberry Rugostar Rose	cont
EVERGREEN SHRUBS				
		<i>Pinus mugo</i> 'Valley Cushion'	Valley Cushion Mugo Pine	cont
ORNAMENTAL GRASSES, PERENNIALS, & GROUNDCOVERS				
		<i>Heuchera</i> 'Autumn Bride'	Autumn Bride Heuchera	cont
		<i>Pycnanthemum virginianum</i>	Mountain Mint	plug
		<i>Schizachyrium scoparium</i>	Little Bluestem	plug
		<i>Sporobolus heterolepis</i>	Prairie Dropseed	plug
<b>ARTIFICIAL TURF</b>				
<b>GREEN ROOF 6" MEDIA DEPTH</b>				
ORNAMENTAL GRASSES, PERENNIALS, & GROUNDCOVERS				
		<i>Agastache</i> 'Blue Fortune'	Blue Fortune Anise Hyssop	plug
		<i>Allium cernuum</i>	Nodding Onion	plug
		<i>Allium schoenoprasum</i> 'Forescate'	Forescate Chives	plug
		<i>Asclepias syriaca</i>	Common Milkweed	plug
		<i>Asclepias tuberosa</i>	Butterfly Weed	plug
		<i>Baptisia australis</i>	Blue False Indigo	cont
		<i>Coreopsis lanceolata</i>	Lance-leaved Coreopsis	seed
		<i>Coreopsis tinctoria</i>	Plains Coreopsis	seed
		<i>Dalea candida</i>	White Prairie Clover	seed
		<i>Dalea purpurea</i>	Purple Prairie Clover	plug
		<i>Echinacea pallida</i>	Pale Coneflower	plug
		<i>Echinacea purpurea</i>	Purple Coneflower	seed
		<i>Eryngium yuccifolium</i>	Rattlesnake Master	plug
		<i>Eupatorium perfoliatum</i>	Common Boneset	seed
		<i>Heliopsis helianthoides</i>	Early Sunflower	seed
		<i>Heuchera</i> 'Autumn Bride'	Autumn Bride Heuchera	cont
		<i>Liatris spicata</i>	Dense Blazing Star	plug
		<i>Monarda fistulosa</i>	Wild Bergamot	plug
		<i>Monarda punctata</i>	Horse Mint	plug
		<i>Panicum virgatum</i>	Switchgrass	seed
		<i>Penstemon digitalis</i>	Foxglove Beardtongue	plug
		<i>Pycnanthemum virginianum</i>	Mountain Mint	plug
		<i>Ratibida pinnata</i>	Yellow Coneflower	seed
		<i>Rudbeckia hirta</i>	Black-eyed Susan	seed
		<i>Ruellia humilis</i>	Wild Petunia	plug
		<i>Schizachyrium scoparium</i>	Little Bluestem	plug
		<i>Solidago canadensis</i>	Canada Goldenrod	seed
		<i>Sporobolus heterolepis</i>	Prairie Dropseed	plug
		<i>Symphotrichum ericoides</i>	Heath Aster	seed
		<i>Symphotrichum laeve</i>	Smooth Blue Aster	seed
		<i>Symphotrichum novae-angliae</i>	New England Aster	seed
		<i>Symphotrichum oolentangiense</i>	Sky Blue Aster	seed
		<i>Verbena hastata</i>	Blue Vervain	seed
BULBS				
		<i>Allium sphaerocephalon</i>	Drumstick Allium	bulb
		<i>Crocus</i> 'Hokus Crocus' MIX	Hokus Crocus Crocus Mix	bulb
		<i>Narcissus</i> 'Gold Shoulder' MIX	Gold Shoulder Daffodil Mix	bulb

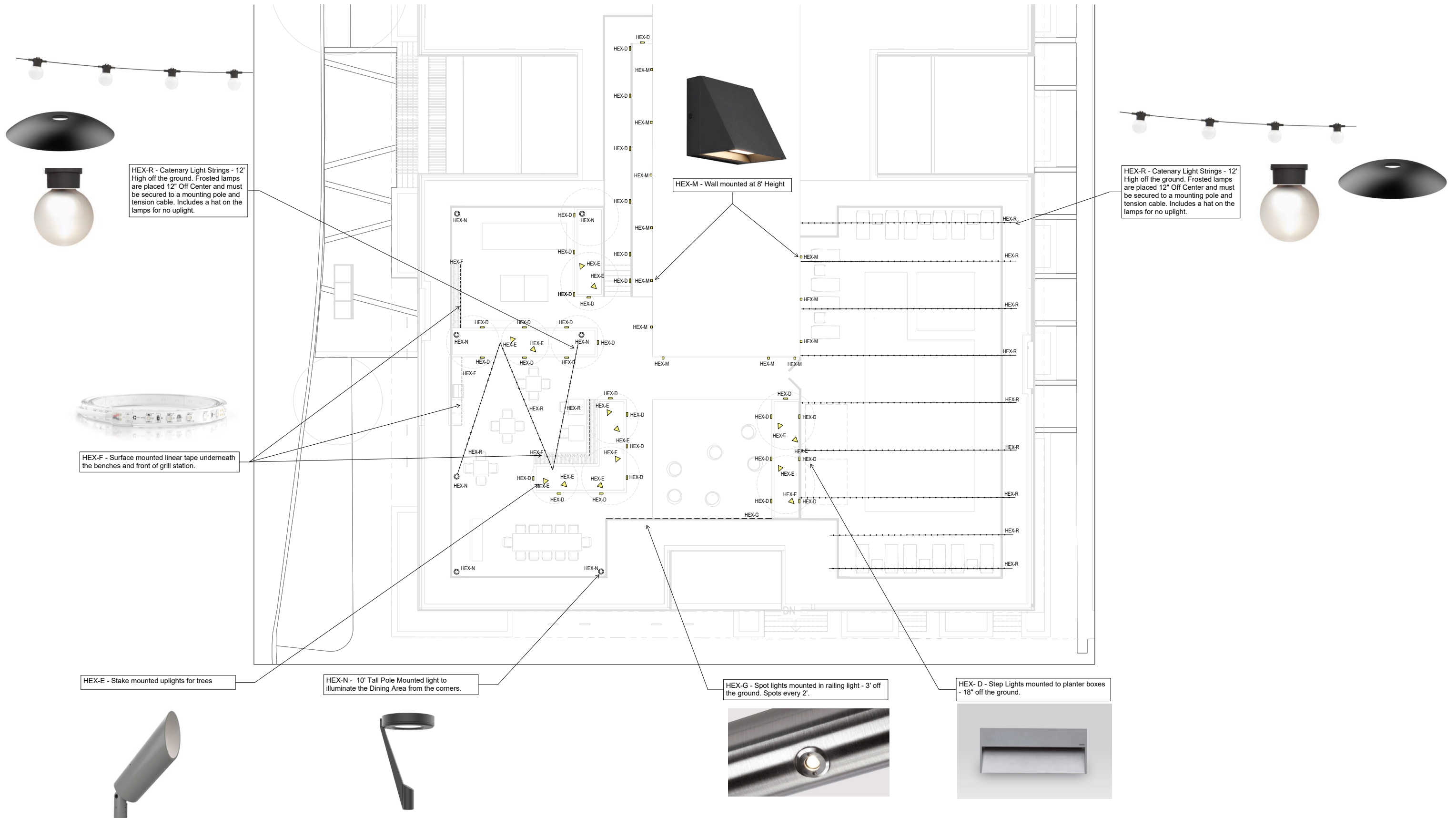


# LIGHTING CONCEPT - 6 STORY ROOF



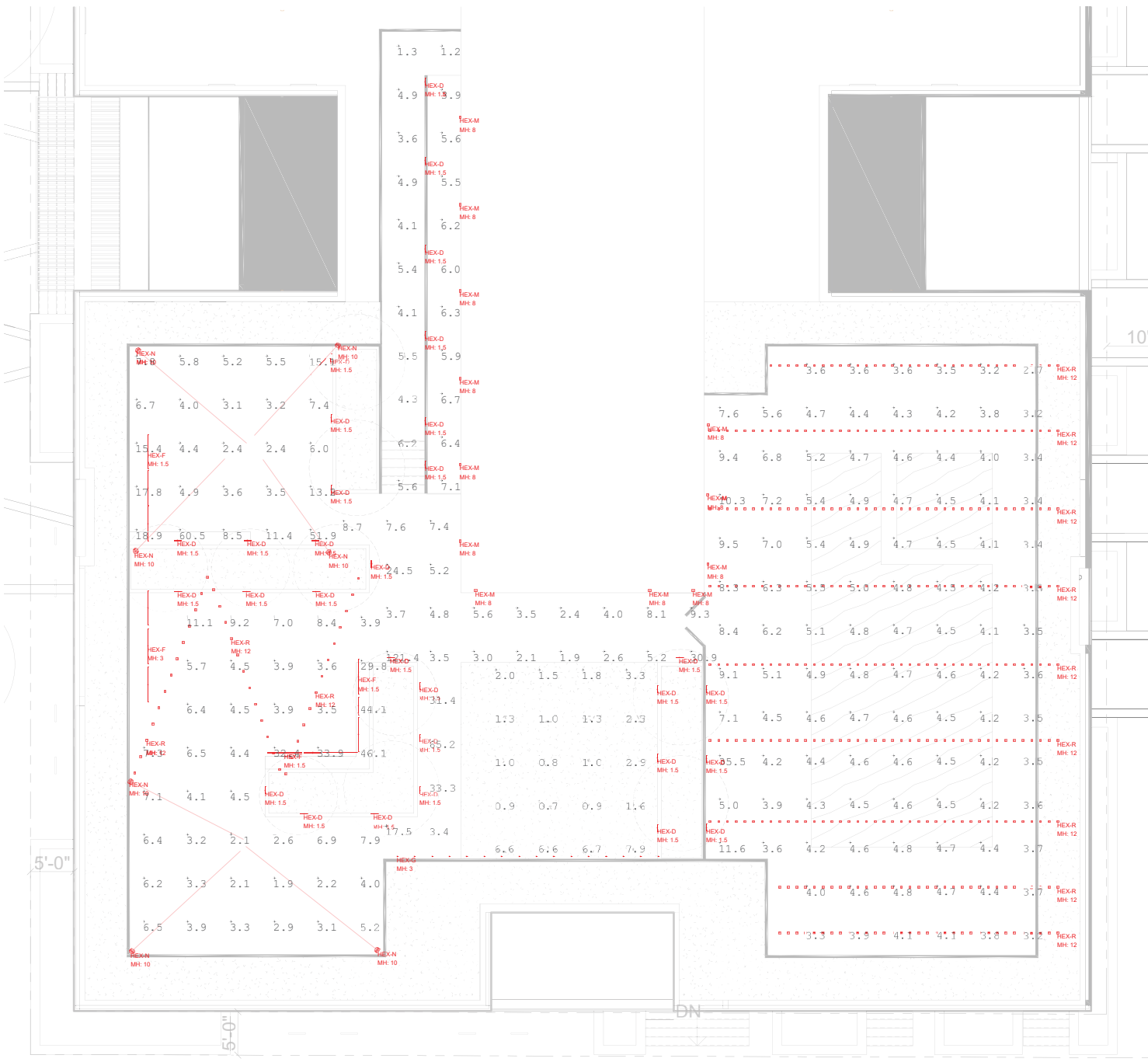


# LIGHTING CONCEPT - 12 STORY ROOF

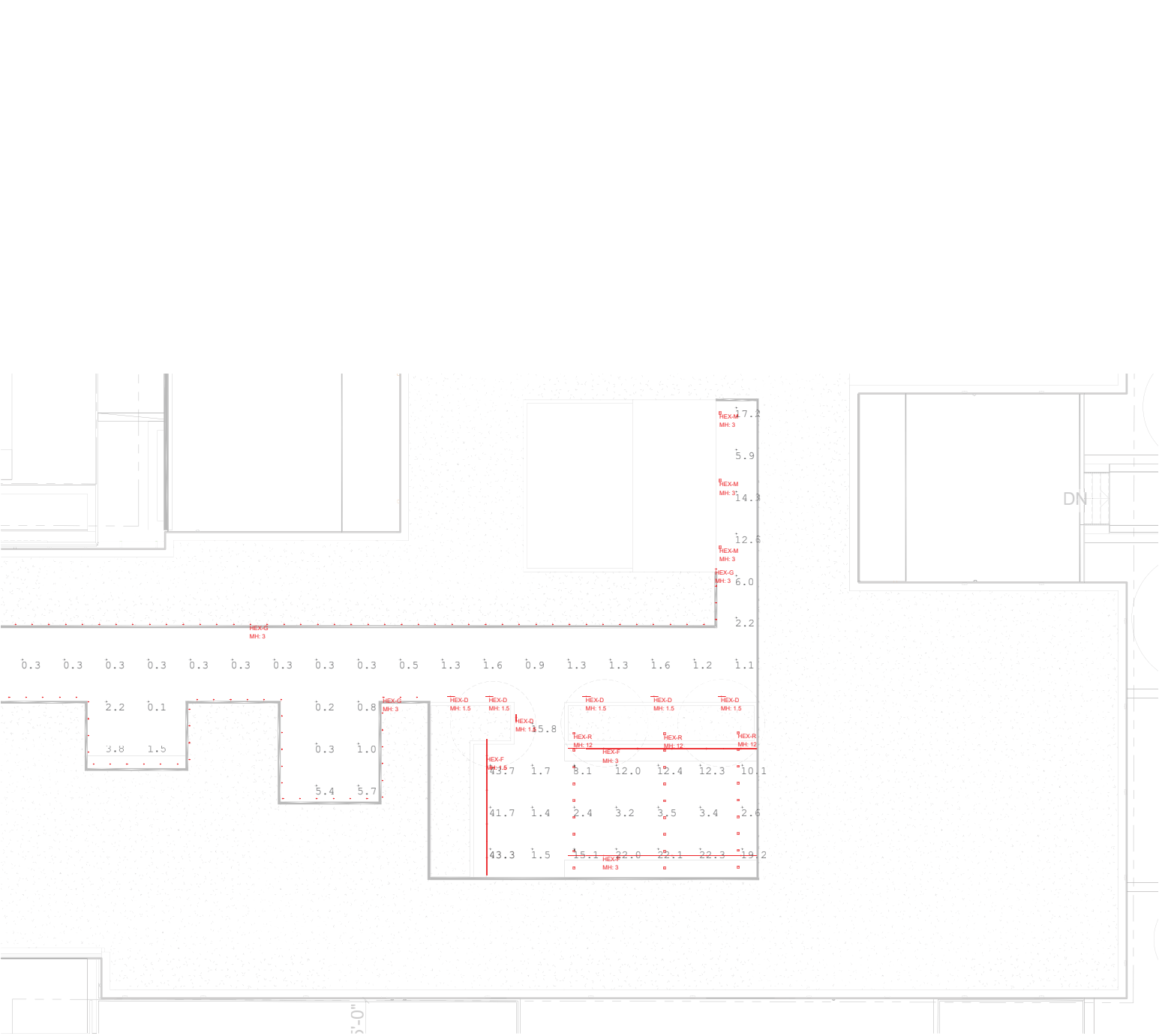




# LIGHTING CONCEPT - PHOTOMETRIC



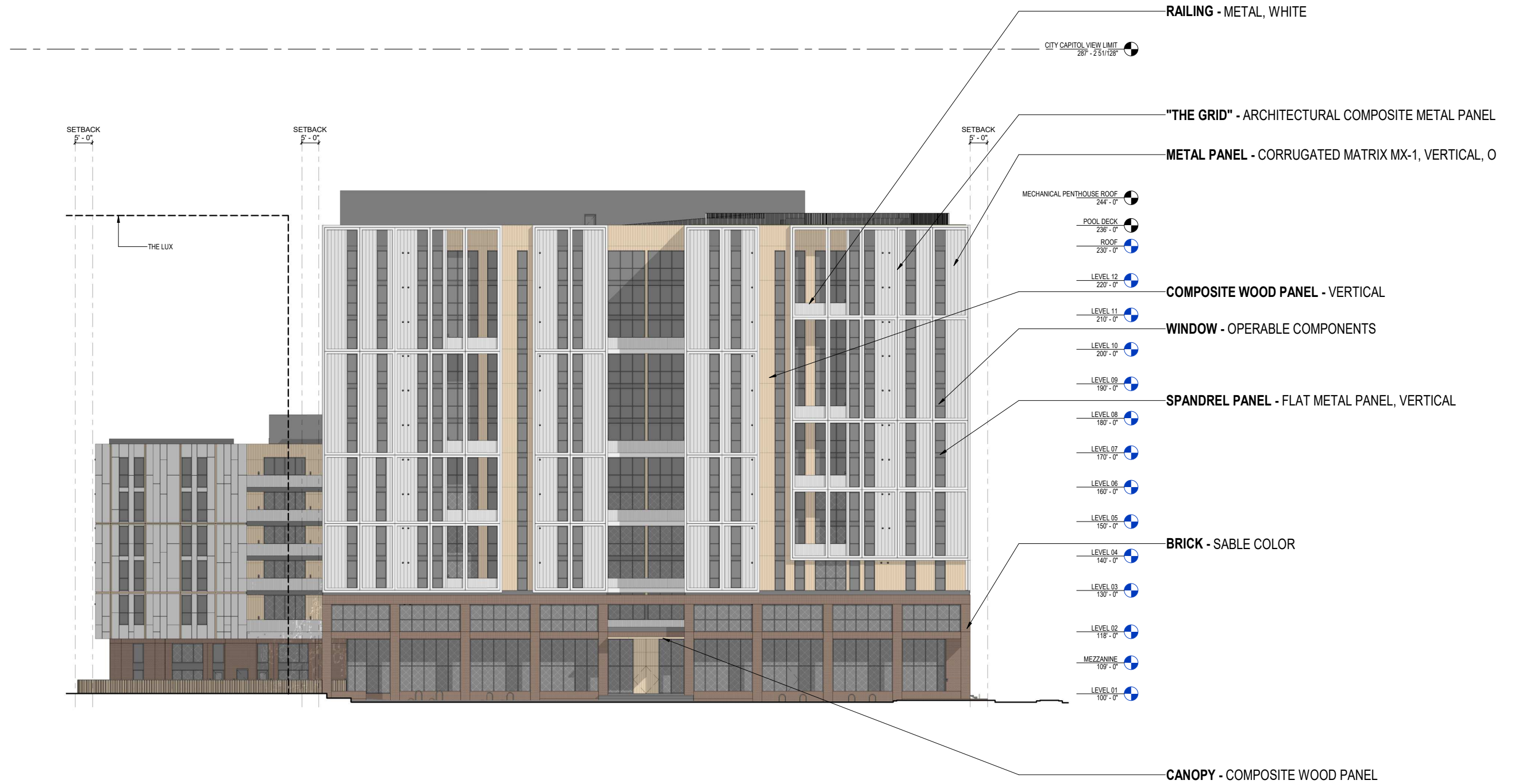
12 STORY ROOF



6 STORY ROOF



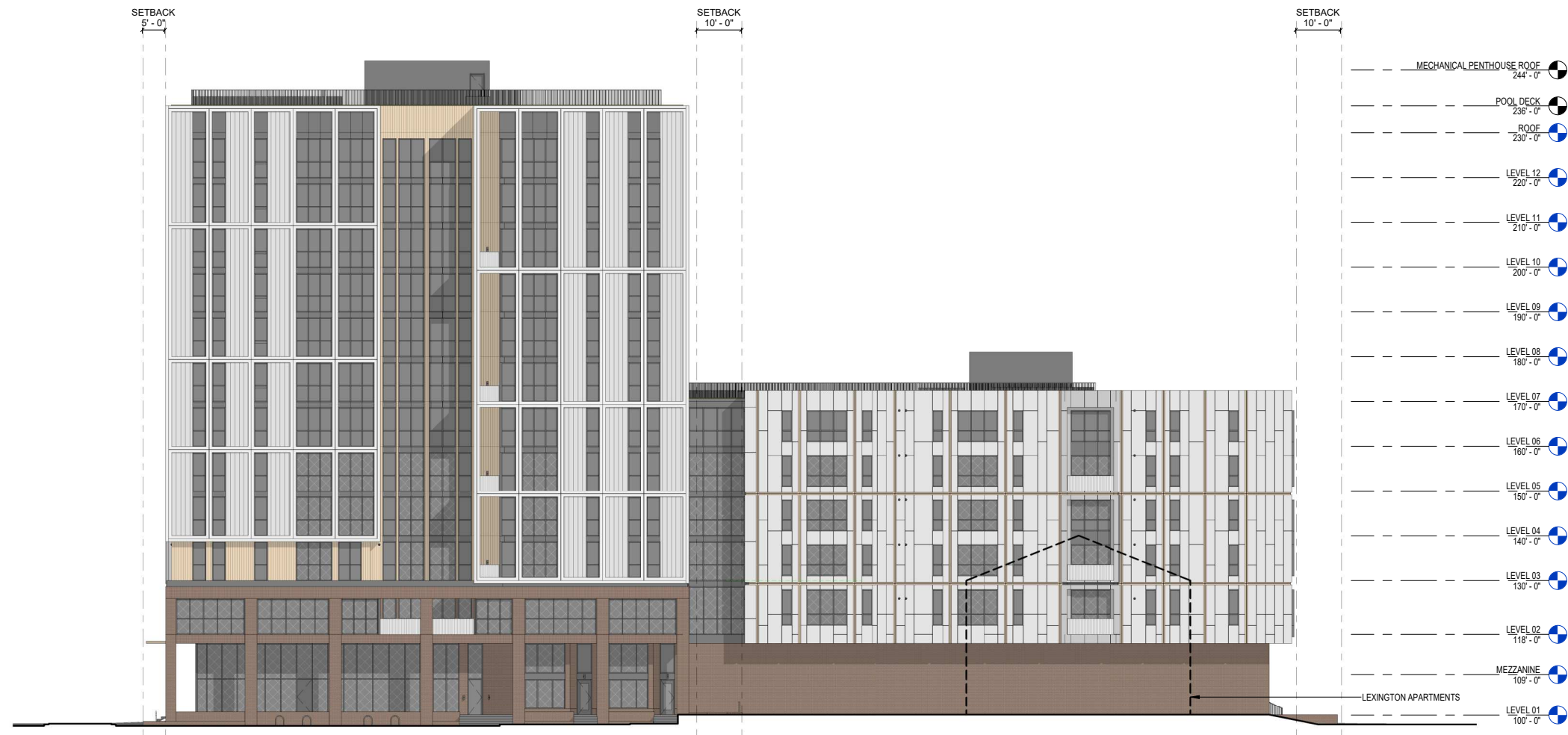
# ELEVATION - NW / JOHNSON STREET



① ELEVATION - WEST  
1/16" = 1'-0"  
SCALE: 1/16" = 1'-0"

# ELEVATION - SW / BASSETT STREET

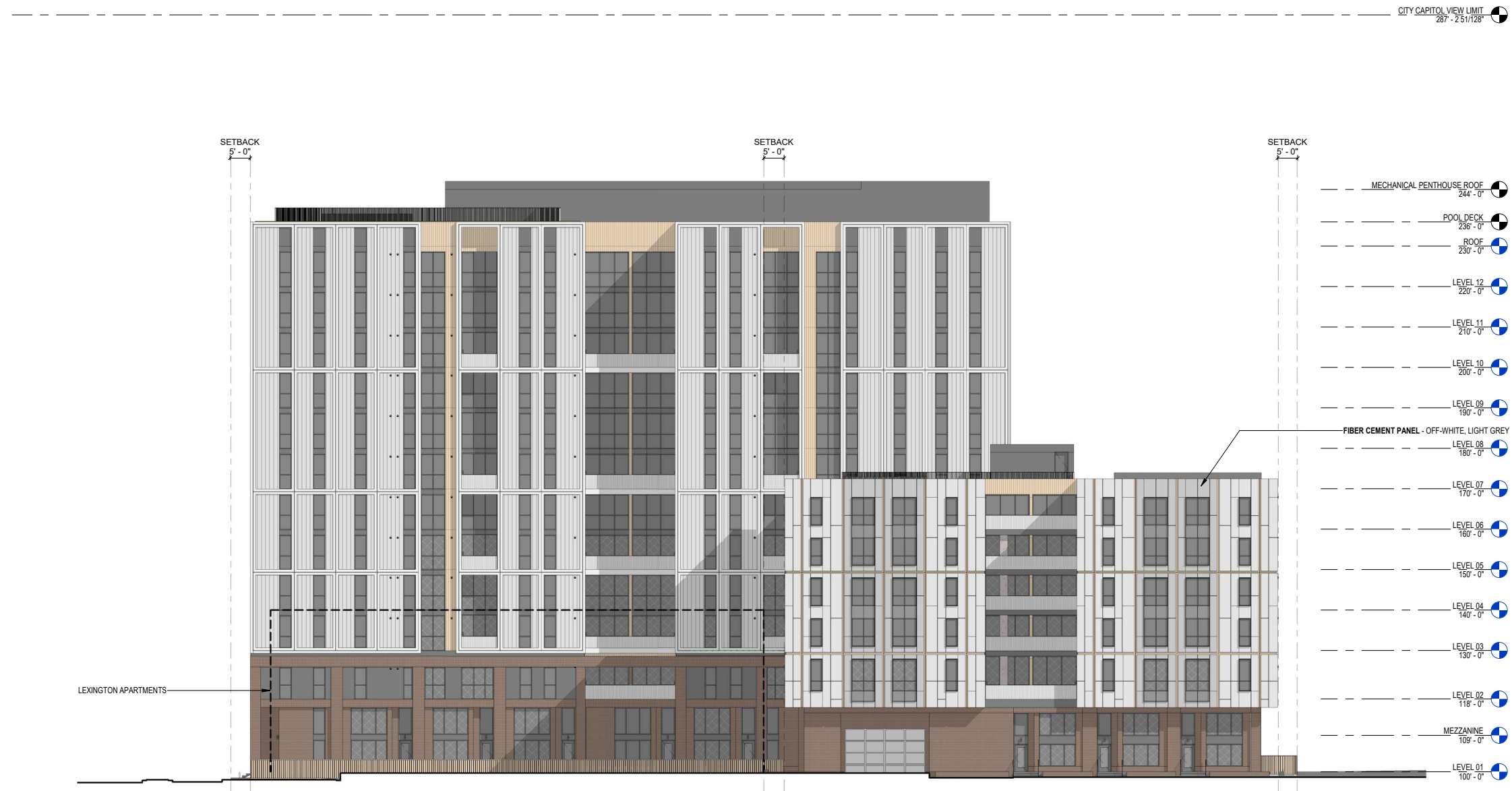
CITY CAPITOL VIEW LIMIT  
287 - 2 51128'



① ELEVATION - SOUTH  
1/16" = 1'-0"  
0 4 8 16 32  
SCALE: 1/16" = 1'-0"

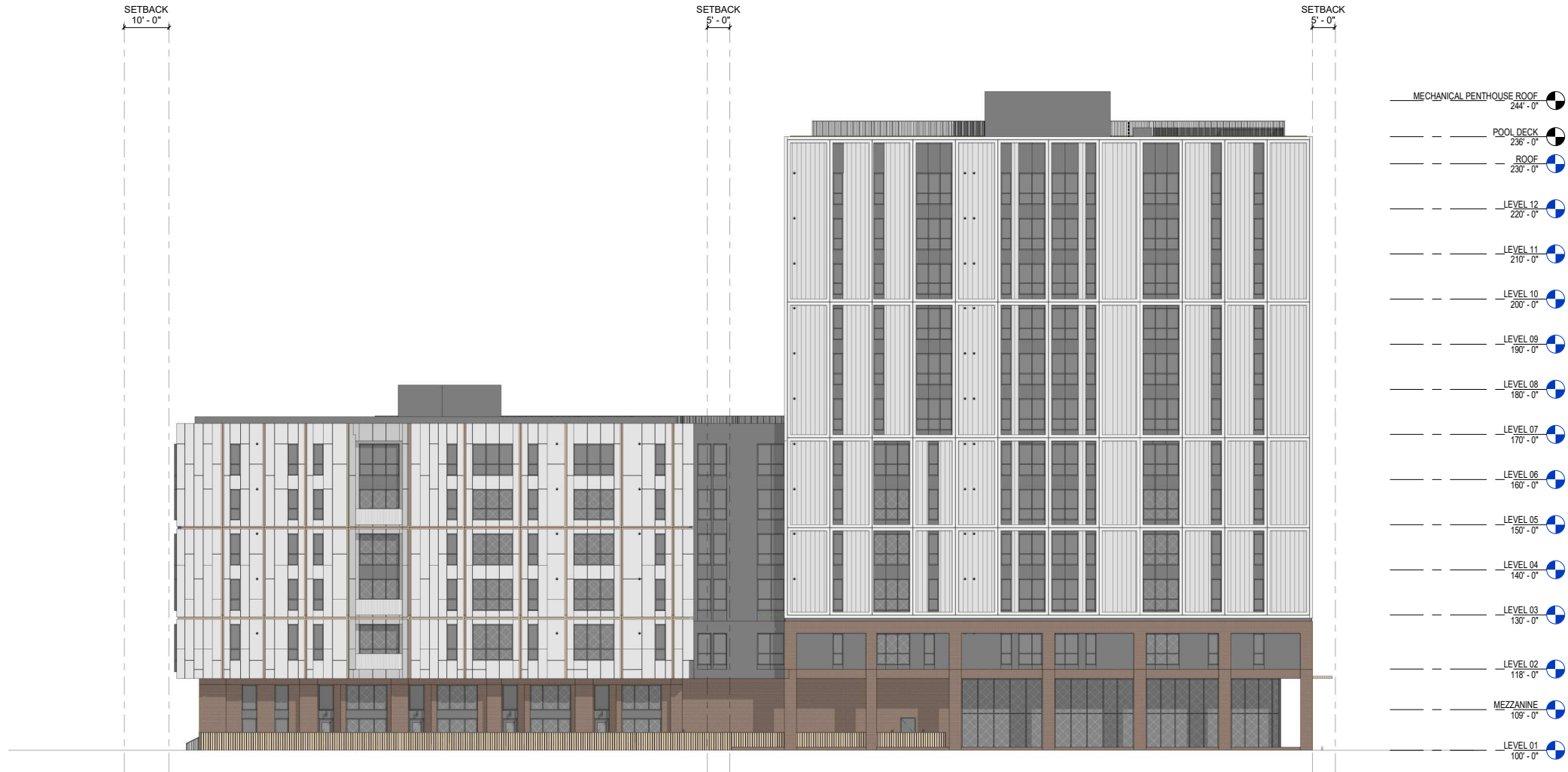


# ELEVATION - SE / DAYTON STREET

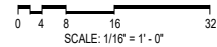


# ELEVATION - NE

CITY CAPITOL VIEW LIMIT  
267 - 2 51128



① ELEVATION - NORTH  
1/16" = 1'-0"





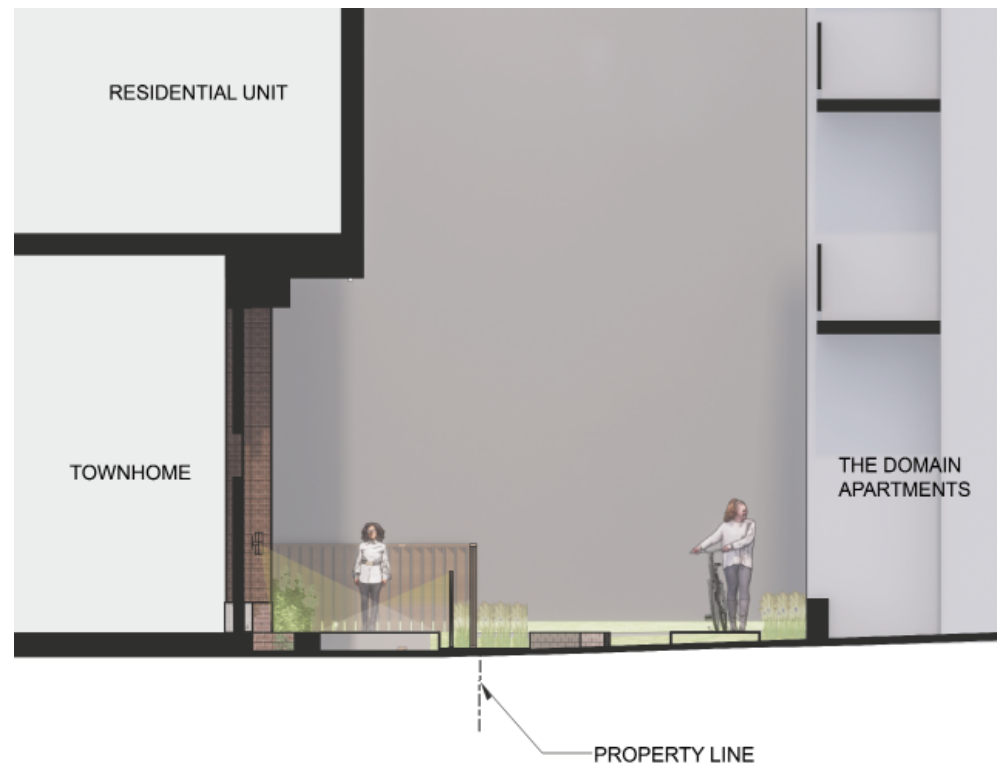
# ENLARGED TOWNHOME ELEVATIONS AND SECTIONS



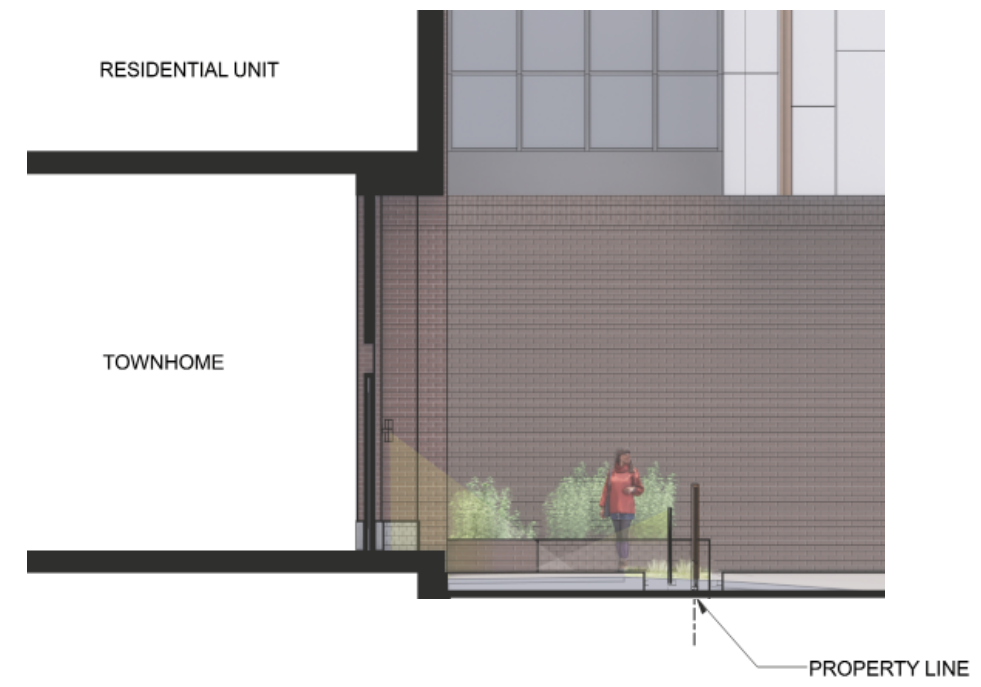
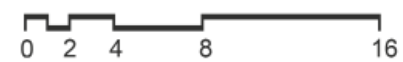
TOWNHOME ELEVATION - AT DOMAIN PROPERTY LINE



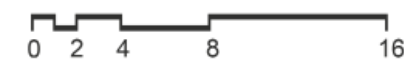
TOWNHOME ELEVATION - AT LEXINGTON PROPERTY LINE



SECTION A - AT DOMAIN PROPERTY LINE



SECTION B - AT LEXINGTON PROPERTY LINE





# PERSPECTIVE - JOHNSON & BASSETT





# ELEVATION PERSPECTIVE - JOHNSON ST.





# PERSPECTIVE - BASSETT ST.





# PERSPECTIVE - DAYTON ST.



**Kahler Slater**

Milwaukee | Madison | Chicago | Richmond

[www.kahlerslater.com](http://www.kahlerslater.com)