

# Permanent Men's Shelter Update

March 6, 2023

City County Homeless Issues Committee





# Common Council Action To Date

Oct 2021

- Authorized the purchase of 2002 Zeier Road as temporary shelter space for males
- Authorized the purchase of 1904 Bartillon Dr from City's Landbanking fund

Nov 2021

- Adopted 2022 Capital Budget, between City of Madison and Dane County have authorized up to \$9 million for capital. [\$6 million City of Madison/ \$3 million Dane County]

April 2022

- Authorized the use of 1902 Bartillon Dr as site for a permanent shelter facility
- Authorized City Engineering staff to release Request for Proposals for Architectural Design Services
- Authorized Community Development staff to work with Dane County staff to release Request for Qualifications for Operator



# Common Council Action To Date

May 2022

- Authorized City Engineering staff to proceed with renovations at 2002 Zeier Rd and added additional funds for renovations

Aug 2022

- Approved the selection of Dimension IV-Madison and team to provide architectural and engineering design services.

Oct 2022

- Approved the selection of Porchlight Inc as the operator of the purpose built shelter.
- **Project team began seeking community feedback on design and services (Trauma- Informed Design Assessment)**

Nov 2022

- Adopted 2023 Capital Budget, adding \$11 million from City of Madison, Dane County and federal funds. Securing up to \$21 million for capital costs



# Trauma-Informed Design Assessment

## Trauma-Informed Design Assessment

**Prepared by: Shopworks Architecture**

**Submitted to and in partnership with:**

- **Dimension IV Madison Design Group**
- **City of Madison**
- **Dane County**



# Community Engagement- Focus Groups

## Summary:

Monday October 24 <sup>th</sup>	9am-10am	1902 Bartillon- Tour site and neighborhood
Monday October 24 <sup>th</sup>	10am-11:30am	The Beacon, Tour and discussion with staff
Monday October 24 <sup>th</sup>	12-2pm	The Beacon, Participants in-person tabling/drop in interviews. They are hoping to use lunch time to sit with folks and talk.
Monday October 24 <sup>th</sup>	3-4pm	Dairy Drive Tour and discussion with staff*
Monday October 24 <sup>th</sup>	4-5:30pm	Dairy Drive, Participants
Monday October 24 <sup>th</sup>	6-7:30pm	Salvation Army, single women shelter Participant engagement

Tuesday October 25 <sup>th</sup>	8-9am	Grace Episcopal Church- Tour of former site of 30 years
Tuesday October 25 <sup>th</sup>	10am-11am	Hawthorne Library- outreach staff Catalyst, Urban Triage, MACH, Briarpatch, Tellurian FSSF
Tuesday October 25 <sup>th</sup>	11am-1pm	Hawthorne Library- Lived Experienced Committee members, folks invited by outreach providers (Lunch provided)
Tuesday October 25 <sup>th</sup>	3pm-4:30pm	Zeier Rd- Tour and discussion with staff
Tuesday October 25 <sup>th</sup>	5:30-7pm	Zeier Rd- Participants in-person tabling/drop in interviews. They are hoping to use dinner time to sit with folks and talk.

*We partnered with a research team at [Shopworks Architecture](#) to conduct focus groups in the community to understand how people are interacting with current shelter and service provision spaces, focusing on the experience of safety, connection, and choice, among others.*



# Community Engagement- Virtual Focus Groups

October 27 <sup>th</sup>	Community partners working with undocumented individuals, Asylum Seekers, or individuals who traditionally don't access emergency housing systems
October 27 <sup>th</sup>	Community partners who provide medical or health related services.
November 2 <sup>rd</sup>	Community partners who provide behavioral health services.
November 3 <sup>rd</sup>	Homeless Services Consortium CORE Committee- focus on feedback of permanent housing connections



# Trauma Informed Design Themes

**Theme 1: Big Picture**

**Theme 2: End Users**

**Theme 3: Guest Experience**

**Theme 4: Staff Experience**



# Summary of Recommendations

- **Desire to have 24/7 Shelter**
- **Desire to serve couples**
- **Prioritization of housing services (i.e. case management, housing navigation)**
- **Smaller sleeping areas**
- **Security measures**
- **Onsite health care and behavioral health services**
- **Flexible, multiuse spaces**
- **Accessibility, consideration of mobility needs**
- **Adequate bathroom facilities**
- **Adequate place for sleeping and dining**





# Lessons From Other Shelters

- **Trauma Informed Design Assessment ([page 32](#))**
- **Purpose-Built Design ([Downtown Madison, Inc](#))**
- **Shelter Strategies ([Insight and Perspectives From Shelter Providers](#)) By the City of Madison**

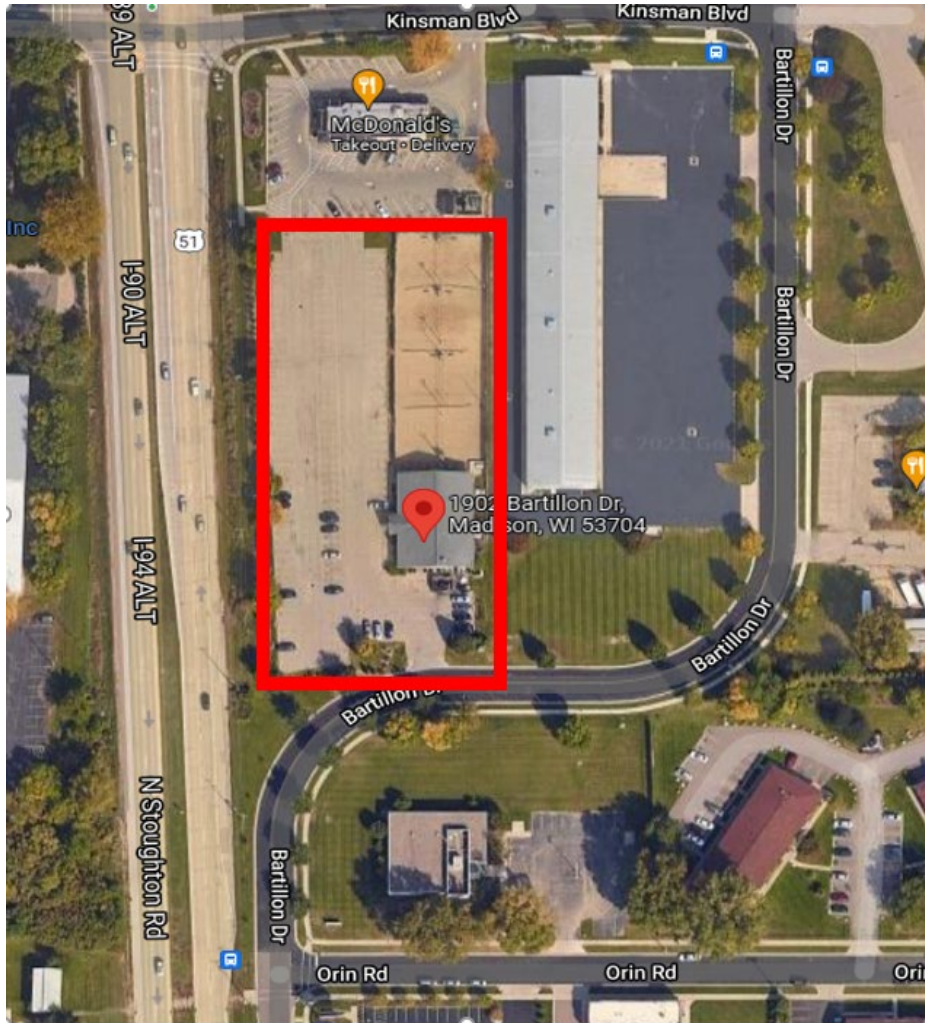


# Current Engagement Partners

- **Porchlight, Inc**
- **Nurse Disrupted, Inc**
- **Madison Street Medicine**
- **Kabba Recovery Services**
- **Catalyst for Change**
- **The Beacon**
- **City Engineering**
- **City Community Development Division**
- **Dane County Housing Access & Affordability**
- **Dane County Human Services**
- **Homeless Services Board of Directors Liaison**
- **Dimension IV Madison Design Group**



# Design Considerations

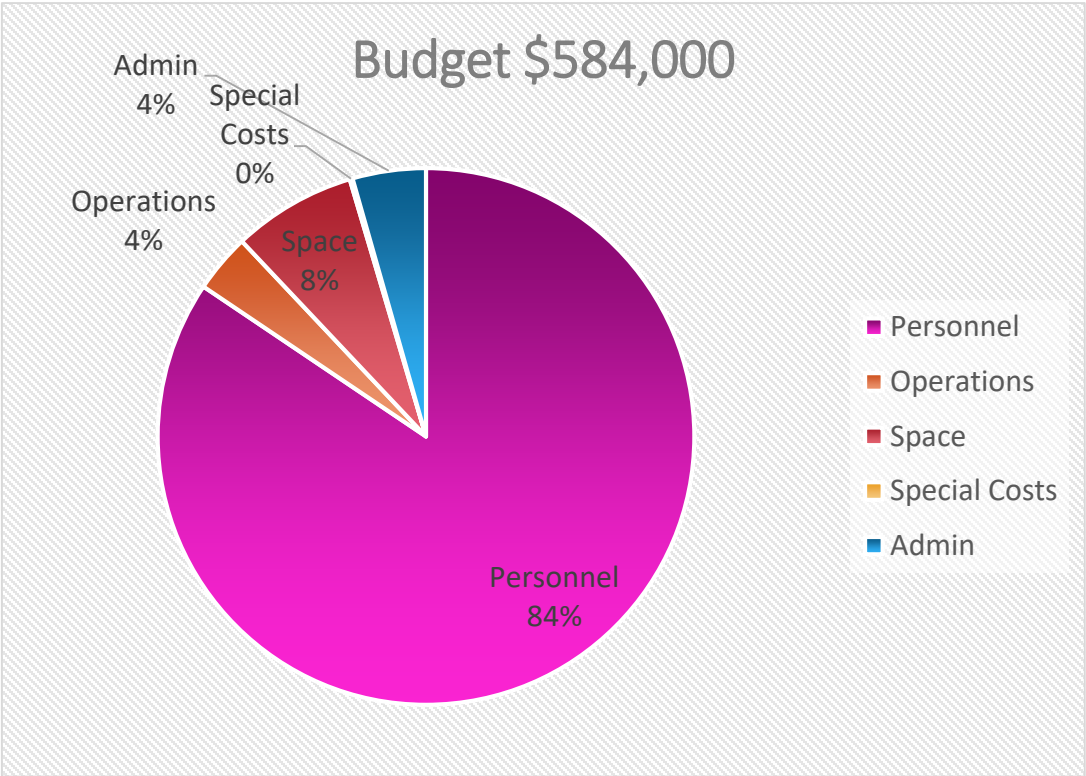


- Lot size: 92,325 square feet
- Located in a Transit Overlay District (TOD)
- Green Space and Set Back Requirements
- Sustainability Requirements
- Percentage for Arts Requirements
- Capital Budget Authority \$21 million

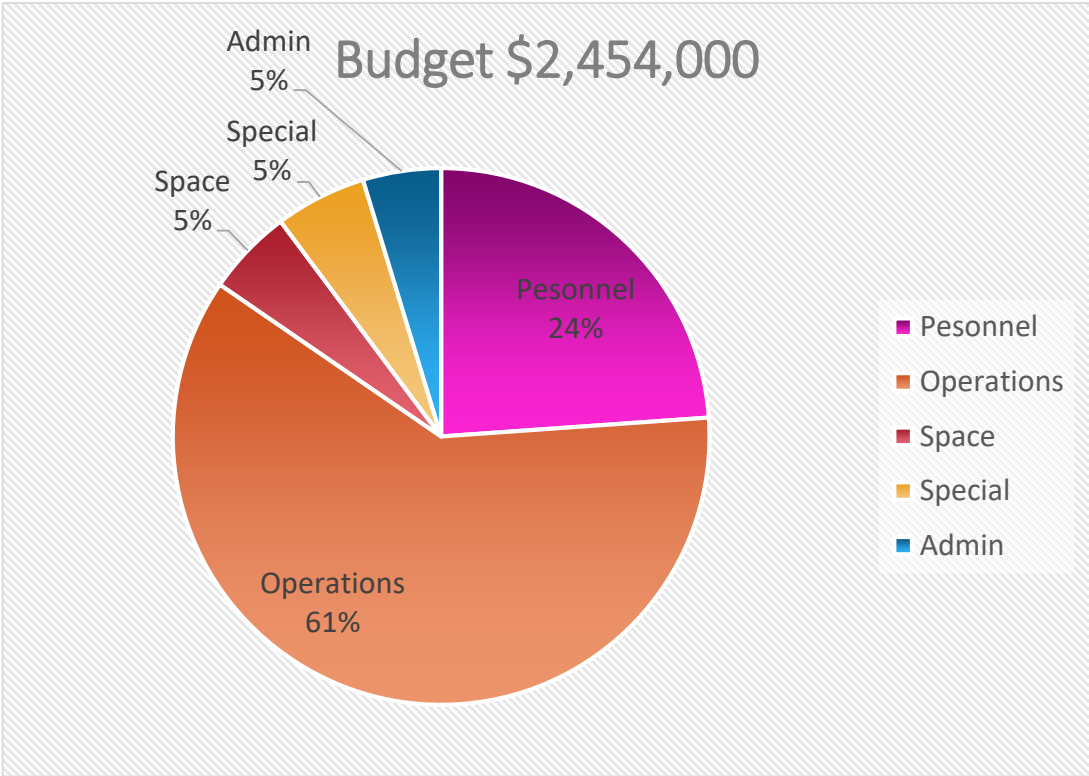


# Budget Considerations

## 2019 Expenses (pre-pandemic)



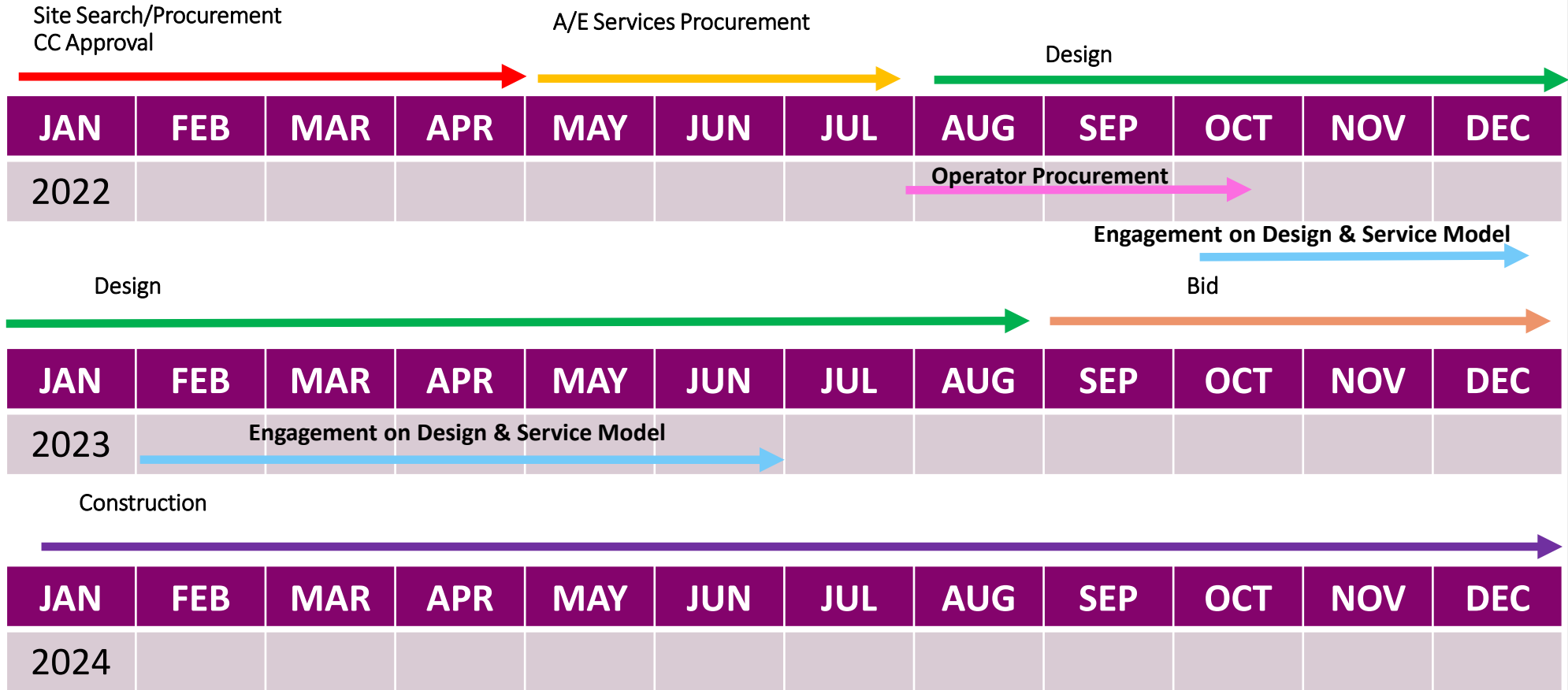
## 2023 Expenses





# TENTATIVE

## 1904 Bartillon Project Schedule



Q1 2025 – TENTATIVE CONSTRUCTION COMPLETION



# Future Engagement- Mid April

- **Building Design**
- **Service Model Approach**
- **Neighborhood Meetings**
- **Expand City Department Engagment**

# Other Information



## **Project Website:**

[www.cityofmadison.com/engineering/projects/bartillon-shelter](http://www.cityofmadison.com/engineering/projects/bartillon-shelter)

## **Project Contacts:**

Jon Evans (City of Madison Engineering)

Ph: 608-243-5893

[jevans@cityofmadison.com](mailto:jevans@cityofmadison.com)

Linette Rhodes (Community Development Division)

Ph: 608-261-9240

[lrhodes@cityofmadison.com](mailto:lrhodes@cityofmadison.com)