



Developing Artists, Murals & Alliances

Reach Dane/Head Start Playground - Community Mural

Project Overview: DAMA designer and lead artist Amy Zaremba created this design for Reach Dane/Head Start to be installed on the back side of the 2674 Milwaukee St. building facing the playground. The mural will be painted on 10 8'x4' aluminum panels to be screwed onto the brick wall by a sign installation company. The panels will be removable.

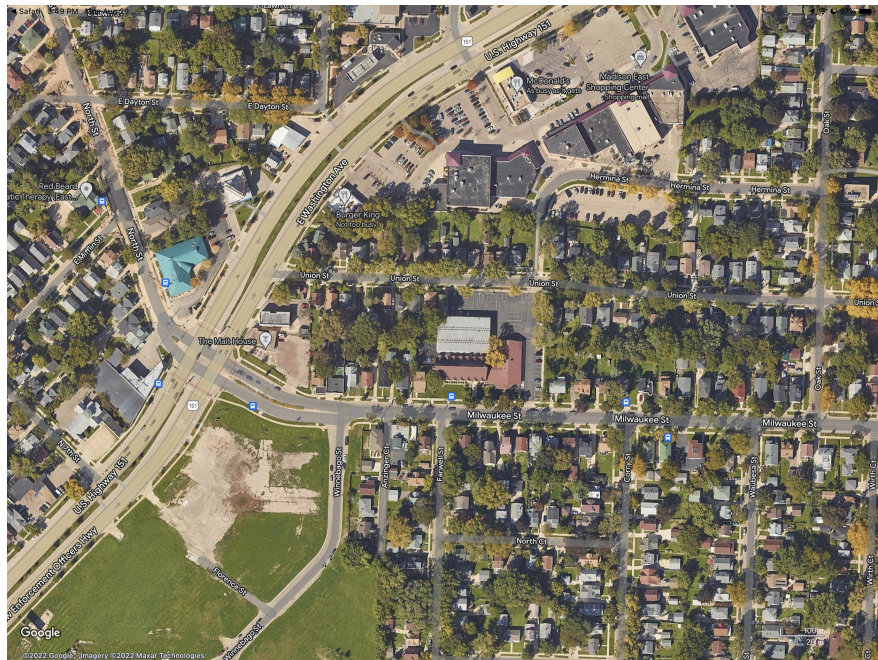
Design Process: Amy and the DAMA team have worked closely with Reach Dane /Head Start leadership to create a design that is playful, peaceful and inspirational for the children who will enjoy it.

Painting: DAMA artists will engage in painting portions of the mural with Head Start children, families and community guests during two 3.5 hour long community paint events at the beginning of October. The events will be held at the 2674 Milwaukee St. location. DAMA artists will finish the mural at the DAMA shop and a sign team will install either in late fall 2022 or spring 2023.

Approvals: The mural location is private facing and on private property. Reach Dane is sharing the design with the City of Madison and permitting awaits the approval of the local Alder. We ask the Madison Arts Commission to endorse this mural project.

Jen Everson has been handling permitting for Reach Dane and will be present to answer questions at the MAC meeting. Amy Zaremba is handling design, engagement and production for DAMA and will also be present.

Location: Head Start 2674 Milwaukee St. Madison



Design: 3 children walking on a path that leads from the right hand panels back into a sun dappled forest on the left. The children start their walk beneath a tree that will be collaged with leaves painted by young children. At the edge of the woods a small crew of Operation Fresh Start young adults work to maintain forest land. The foreground left shows a small pond with local wildlife and a calla lily in memory of a beloved Head Start employee. The painting will be finished in a soft painterly style.





