

# TRANSPORTATION PROJECT PLAT NO: 12777-2-4.05 AMENDMENT NO: 1

AMENDS PARCEL NO: 22 OF TRANSPORTATION PROJECT PLAT 12777-2-4.05 RECORDED AS DOCUMENT NO. 5839584 AND FILED IN VOLUME 61-064B OF PLATS ON PAGE 387.

THAT PART OF LOTS 55 & 56, BLOCK 2 OF CAREY'S REPLAT OF BLOCK 283 FARWELL'S REPLAT AND ADDITION, AND PART OF LOTS 25 & 26, BLOCK 318 OF MADISON SQUARE (RILEY PLAT) LOCATED IN THE NE 1/4 OF THE SW 1/4, AND PART OF LOT 18, BLOCK 288 OF FARWELL'S REPLAT, AND PART OF LOTS 1 & 2, BLOCK 3 OF WAKELEY'S SUBDIVISION OF PART OF BLOCKS 278, 282, 285, 287, & 294 FARWELL'S REPLAT LOCATED IN THE NW 1/4 OF THE SE 1/4, ALL IN SECTION 6, T 7 N, R 10 E, CITY OF MADISON, DANE COUNTY, WISCONSIN.

RELOCATION ORDER EAST-WEST BUS RAPID TRANSIT CITY OF MADISON DANE COUNTY

TO PROPERLY ESTABLISH, LAY OUT, WIDEN, ENLARGE, EXTEND, CONSTRUCT, RECONSTRUCT, IMPROVE, OR MAINTAIN A PORTION OF THE HIGHWAY DESIGNATED ABOVE, THE CITY OF MADISON DEEMS IT NECESSARY TO RELOCATE OR CHANGE SAID HIGHWAY AND ACQUIRE CERTAIN LANDS AND INTERESTS OR RIGHTS IN LANDS FOR THE ABOVE PROJECT.

TO EFFECT THIS CHANGE, PURSUANT TO AUTHORITY GRANTED UNDER SECTION 62.22, WISCONSIN STATUTES, THE CITY OF MADISON HEREBY ORDERS THAT:  
 1. THAT PORTION OF SAID HIGHWAY AS SHOWN ON THIS PLAT IS LAID OUT AND ESTABLISHED TO THE LINES AND WIDTHS AS SO SHOWN FOR THE ABOVE PROJECT.  
 2. THE LANDS OR INTERESTS OR RIGHTS IN LANDS AS SHOWN ON THIS PLAT ARE REQUIRED BY THE CITY FOR THE ABOVE PROJECT AND SHALL BE ACQUIRED IN THE NAME OF THE CITY OF MADISON, PURSUANT TO THE PROVISIONS OF SECTION 62.22, WISCONSIN STATUTES.

## SCHEDULE OF LANDS & INTERESTS REQUIRED

OWNERS NAMES ARE SHOWN FOR REFERENCE PURPOSES ONLY AND ARE SUBJECT TO CHANGE PRIOR TO THE TRANSFER OF LAND INTERESTS TO THE CITY OF MADISON.

PARCEL NUMBER	OWNERS	INTERESTS REQUIRED	R/W NEW	S.F. EXISTING	S.F. TOTAL	TLE S.F.
14	BRIAN HARRIS AND DAVID ALBINO	TLE	---	---	---	224
16	JOHN F. CALABRESE	TLE	---	---	---	136
17	TRU ENDEAVORS, LLC	TLE	---	---	---	66
18	TRUDY N. CARDEN	TLE	---	---	---	97
22	MADISON METROPOLITAN SCHOOL DISTRICT	TLE	---	---	---	1435
23	WALLACE HOLDINGS, LLC & TUIG ENTERPRISES, LLC	TLE	---	---	---	17
24	MICHAEL J. COLE	TLE	---	---	---	190
26	DAWN E. OKITE	TLE	---	---	---	130

## UTILITY INTERESTS REQUIRED

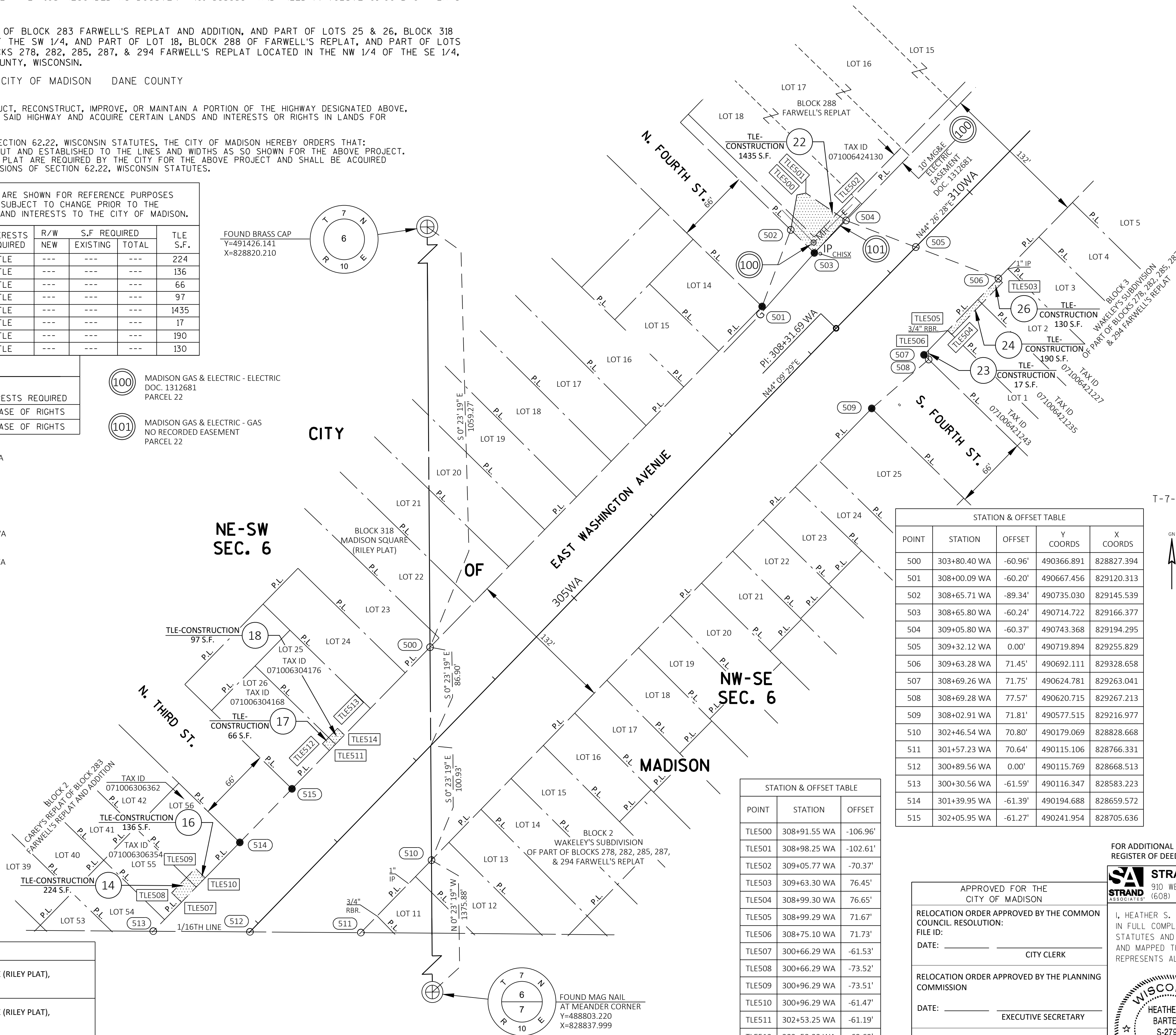
UTILITY NUMBER	UTILITY OWNER(S)	INTERESTS REQUIRED
100	MADISON GAS & ELECTRIC - ELECTRIC	RELEASE OF RIGHTS
101	MADISON GAS & ELECTRIC - GAS	RELEASE OF RIGHTS

PI STA. 288+21.38 WA Y=489205.945 X=827785.047  
 PI STA. 308+31.69 WA Y=490648.188 X=829185.508  
 PI STA = 327+11.21 WA Y = 491990.109 X = 830501.502  
 DELTA = 14°55'27" LT  
 D = 7°09'43"  
 T = 104.78'  
 L = 208.38'  
 R = 800.00'  
 PC STA = 326+06.42 WA Y = 491915.296 X = 830428.134  
 PT STA = 328+14.81 WA Y = 492081.294 X = 830553.127  
 DB = N44°26'28"E  
 DA = N29°31'01"E

COURSE	BEARING	DISTANCE
500 - 501	N44° 15' 43"E	419.69'
501 - 502	N20° 28' 16"E	72.13'
502 - 503	S45° 44' 17"W	29.10'
503 - 504	N44° 15' 43"E	40.00'
504 - 505	S69° 07' 09"E	65.86'
505 - 506	S69° 07' 09"E	77.95'
506 - 507	S44° 15' 43"W	94.02'
507 - 508	S45° 44' 17"E	5.83'
508 - 509	S49° 18' 22"W	66.26'
509 - 510	S44° 15' 43"W	556.37'
510 - 511	S44° 15' 43"W	89.32'
511 - 512	N89° 36' 42"W	97.82'
512 - 513	N89° 36' 42"W	85.29'
513 - 514	N44° 15' 43"E	109.39'
514 - 515	N44° 15' 43"E	66.00'
515 - 500	N44° 15' 43"E	174.45'

POSITIONS SHOWN ON THIS PLAT ARE WISCONSIN COORDINATE REFERENCE SYSTEM COORDINATES (WISCRS), DANE COUNTY, NAD83(2011), IN U.S. SURVEY FEET. VALUES ARE GRID COORDINATES, GRID BEARINGS, AND GRID DISTANCES. GRID DISTANCES MAY BE USED AS GROUND DISTANCES.

HWY	BASIS OF EXIST. R/W
EAST WASHINGTON AVENUE	FARWELL'S REPLAT & ADDITION, MADISON SQUARE (RILEY PLAT), WAKELEY'S SUBDIVISION
THIRD STREET	FARWELL'S REPLAT & ADDITION, MADISON SQUARE (RILEY PLAT), WAKELEY'S SUBDIVISION
FOURTH STREET	FARWELL'S REPLAT & ADDITION, MADISON SQUARE (RILEY PLAT), WAKELEY'S SUBDIVISION

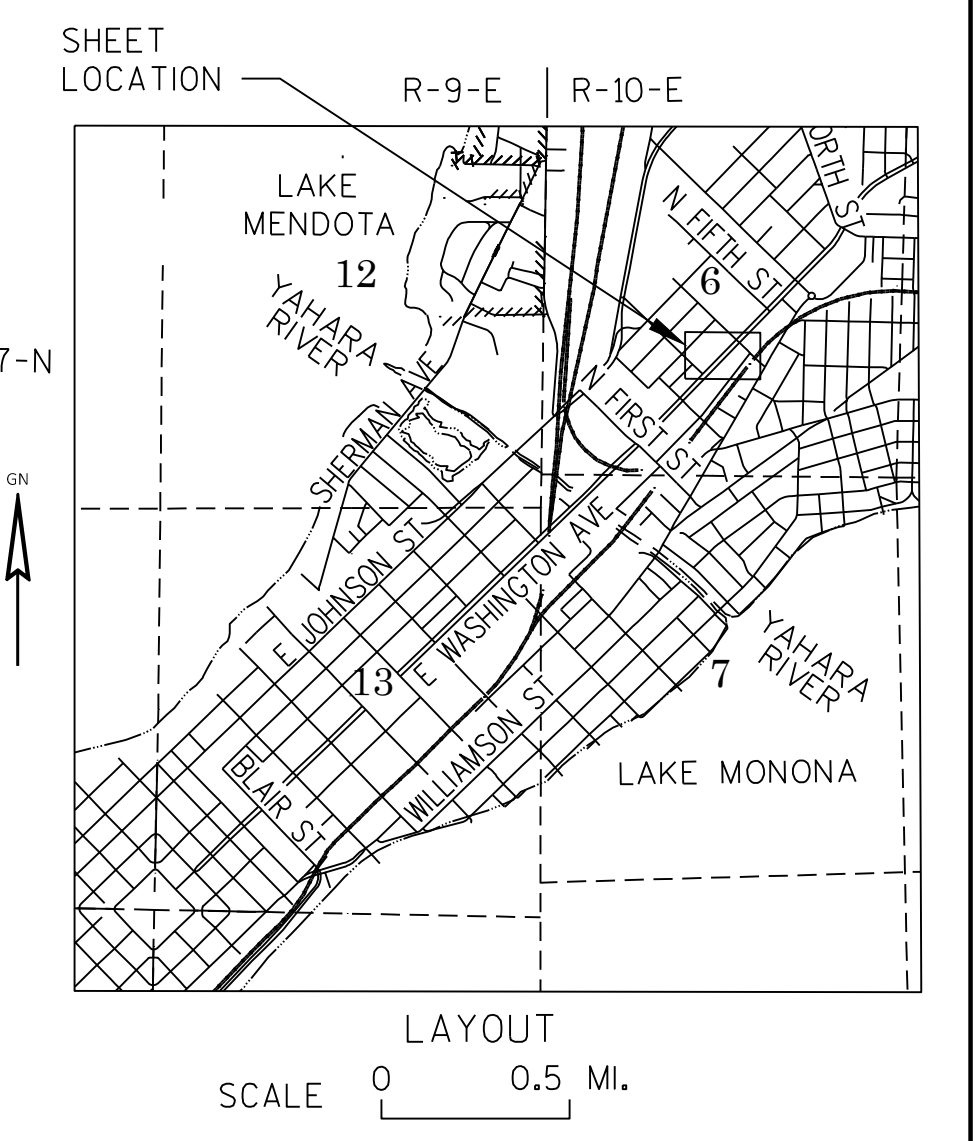
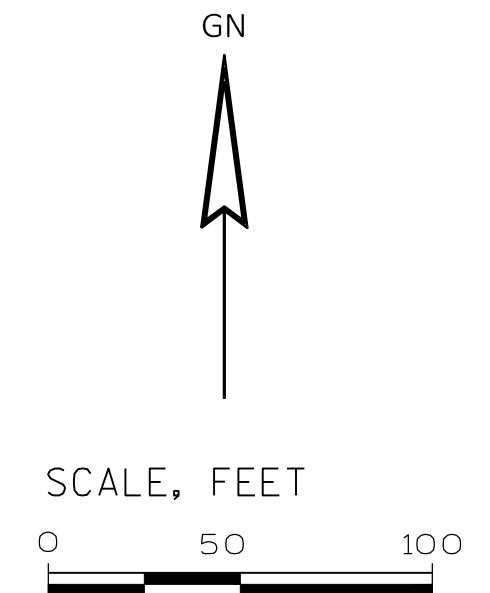


- (100) MADISON GAS & ELECTRIC - ELECTRIC DOC. 1312681 PARCEL 22
- (101) MADISON GAS & ELECTRIC - GAS NO RECORDED EASEMENT PARCEL 22

POINT	STATION	OFFSET	Y COORDS	X COORDS
500	303+80.40 WA	-60.96'	490366.891	828827.394
501	308+00.09 WA	-60.20'	490667.456	829120.313
502	308+65.71 WA	-89.34'	490735.030	829145.539
503	308+65.80 WA	-60.24'	490714.722	829166.377
504	309+05.80 WA	-60.37'	490743.368	829194.295
505	309+32.12 WA	0.00'	490719.894	829255.829
506	309+63.28 WA	71.45'	490692.111	829328.658
507	308+69.26 WA	71.75'	490624.781	829263.041
508	308+69.28 WA	77.57'	490620.715	829267.213
509	308+02.91 WA	71.81'	490577.515	829216.977
510	302+46.54 WA	70.80'	490179.069	828828.668
511	301+57.23 WA	70.64'	490115.106	828766.331
512	300+89.56 WA	0.00'	490115.769	828668.513
513	300+30.56 WA	-61.59'	490116.347	828583.223
514	301+39.95 WA	-61.39'	490194.688	828659.572
515	302+05.95 WA	-61.27'	490241.954	828705.636

POINT	STATION	OFFSET
TLE500	308+91.55 WA	-106.96'
TLE501	308+98.25 WA	-102.61'
TLE502	309+05.77 WA	-70.37'
TLE503	309+63.30 WA	76.45'
TLE504	308+99.30 WA	76.65'
TLE505	308+99.29 WA	71.67'
TLE506	308+75.10 WA	71.73'
TLE507	300+66.29 WA	-61.53'
TLE508	300+66.29 WA	-73.52'
TLE509	300+96.29 WA	-73.51'
TLE510	300+96.29 WA	-61.47'
TLE511	302+53.25 WA	-61.19'
TLE512	302+53.23 WA	-69.69'
TLE513	302+72.30 WA	-69.65'
TLE514	302+72.32 WA	-61.15'

RESERVED FOR REGISTER OF DEEDS  
 PROJECT NUMBER 12777-2-4.05  
 AMENDMENT NO: 1



FOR ADDITIONAL INFORMATION REFER TO THE TITLE SHEET, RECORDED IN THE OFFICE OF REGISTER OF DEEDS IN DANE COUNTY AS SHEET 2 OF 2 OF DOCUMENT 5838770.

APPROVED FOR THE CITY OF MADISON

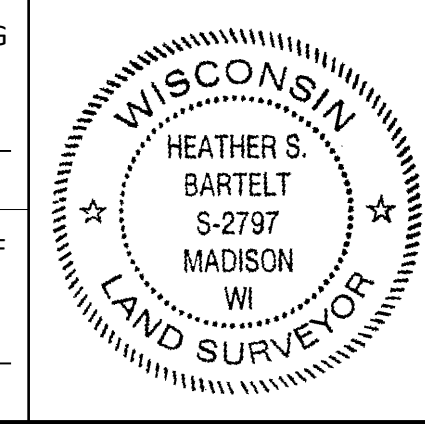
RELOCATION ORDER APPROVED BY THE COMMON COUNCIL RESOLUTION:  
 FILE ID: \_\_\_\_\_  
 DATE: \_\_\_\_\_ CITY CLERK

RELOCATION ORDER APPROVED BY THE PLANNING COMMISSION  
 DATE: \_\_\_\_\_ EXECUTIVE SECRETARY

RELOCATION ORDER APPROVED BY THE BOARD OF PUBLIC WORKS  
 DATE: \_\_\_\_\_ EXECUTIVE SECRETARY

**STRAND ASSOCIATES, INC.**  
 910 WEST WINGRA DRIVE, MADISON, WI 53715  
 (608) 251-4843

I, HEATHER S. BARTELT, PROFESSIONAL LAND SURVEYOR, HEREBY CERTIFY THAT IN FULL COMPLIANCE WITH THE PROVISIONS OF SECTION 84.095 OF THE WISCONSIN STATUTES AND UNDER THE DIRECTION OF THE CITY OF MADISON, I HAVE SURVEYED AND MAPPED THIS TRANSPORTATION PROJECT PLAT AND SUCH PLAT CORRECTLY REPRESENTS ALL EXTERIOR BOUNDARIES OF THE SURVEYED LAND.



SIGNATURE: *Heather S. Bartelt* DATE: 7/19/22  
 PRINT NAME: HEATHER S. BARTELT  
 REGISTRATION NUMBER: S-2797