

# TRANSPORTATION PROJECT PLAT NO: 12777-2-4.10 AMENDMENT NO: 1

AMENDS PARCEL NO: 39 AND ADDS PARCEL NO: 40 AND ADDS UTILITY NO: 101 OF TRANSPORTATION PROJECT PLAT 12777-2-4.10 RECORDED AS DOCUMENT NO. 5839596 AND FILED IN VOLUME 61-065A OF PLATS ON PAGE 392.

THAT PART OF LOT 1 OF CSM 8221 AND PART OF LOT 1 OF CSM 14031 AND PART OF LOTS 1, 2, AND 3 OF BOSBEN'S PLAT LOCATED IN THE NW 1/4 OF THE NW 1/4 OF SECTION 33, T 8 N, R 10 E, CITY OF MADISON, DANE COUNTY, WISCONSIN.

RELOCATION ORDER EAST-WEST BUS RAPID TRANSIT CITY OF MADISON DANE COUNTY

TO PROPERLY ESTABLISH, LAY OUT, WIDEN, ENLARGE, EXTEND, CONSTRUCT, RECONSTRUCT, IMPROVE, OR MAINTAIN A PORTION OF THE HIGHWAY DESIGNATED ABOVE, THE CITY OF MADISON DEEMS IT NECESSARY TO RELOCATE OR CHANGE SAID HIGHWAY AND ACQUIRE CERTAIN LANDS AND INTERESTS OR RIGHTS IN LANDS FOR THE ABOVE PROJECT.

TO EFFECT THIS CHANGE, PURSUANT TO AUTHORITY GRANTED UNDER SECTION 62.22, WISCONSIN STATUTES, THE CITY OF MADISON HEREBY ORDERS THAT:  
 1. THAT PORTION OF SAID HIGHWAY AS SHOWN ON THIS PLAT IS LAID OUT AND ESTABLISHED BY THE LINES AND WIDTHS AS SO SHOWN FOR THE ABOVE PROJECT.  
 2. THE LANDS OR INTERESTS OR RIGHTS IN LANDS AS SHOWN ON THIS PLAT ARE REQUIRED BY THE CITY FOR THE ABOVE PROJECT AND SHALL BE ACQUIRED IN THE NAME OF THE CITY OF MADISON, PURSUANT TO THE PROVISIONS OF SECTION 62.22, WISCONSIN STATUTES.

## SCHEDULE OF LANDS & INTERESTS REQUIRED

OWNERS NAMES ARE SHOWN FOR REFERENCE PURPOSES ONLY AND ARE SUBJECT TO CHANGE PRIOR TO THE TRANSFER OF LAND INTERESTS TO THE CITY OF MADISON.

PARCEL NUMBER	OWNERS	INTERESTS REQUIRED	R/W NEW	S.F. EXISTING	S.F. REQUIRED TOTAL	TLE S.F.
39	HY-VEE, INC.	FEE,TLE	612	---	612	775
40	EBS WI PROPERTY MDEA LLC	TLE	---	---	---	262
41	HOME SAVINGS BANK	FEE,TLE	385	---	385	1096
42	MARTINY TO-KA-LEE	FEE,TLE	488	---	488	306
43	SAWYER STUCKEY	FEE,TLE	85	---	85	515

## UTILITY INTERESTS REQUIRED

UTILITY NUMBER	UTILITY OWNER(S)	INTERESTS REQUIRED
101	MADISON GAS & ELECTRIC - GAS	RELEASE OF RIGHTS

MADISON GAS & ELECTRIC - GAS  
 DOC. 1087091  
 PARCEL 39

PI STA. 416+02.40 WA Y=498055.853 X=836874.470  
 PI STA. 429+65.66 WA Y=498960.316 X=837894.486  
 PI STA. 439+37.37 WA Y=499613.218 X=838614.163

COURSE	BEARING	DISTANCE
1000 - 1001	S56° 59' 41"E	68.24'
1001 - 1021	S47° 40' 18"W	36.09'
1021 - 1002	S47° 40' 18"W	2.00'
1002 - 1003	S36° 48' 12"W	25.36'
1003 - 1004	S47° 49' 14"W	119.16'
1004 - 1005	S44° 43' 55"W	5.20'
1005 - 1008	N53° 59' 48"W	72.62'
1008 - 1009	N42° 12' 53"W	81.81'
1009 - 1010	S42° 46' 24"E	2.38'
1010 - 1011	SEE CURVE 1 DATA	
1011 - 1012	N47° 45' 13"E	116.20'
1012 - 1013	N74° 19' 26"E	17.86'
1013 - 1014	N47° 40' 18"E	31.51'
1014 - 1000	S56° 59' 41"E	56.84'
1005 - 1002	N47° 40' 18"E	96.13'
1013 - 1015	S47° 40' 18"W	113.67'
1016 - 1015	S47° 40' 18"W	34.61'
1015 - 1011	SEE CURVE 2 DATA	
1011 - 1017	N47° 45' 13"E	53.04'
1017 - 1016	S42° 46' 24"E	8.10'
1019 - 1016	S47° 40' 18"W	60.53'
1017 - 1018	N47° 45' 13"E	60.53'
1018 - 1019	S42° 46' 24"E	8.02'
1013 - 1019	S47° 40' 18"W	18.53'
1018 - 1012	N47° 45' 13"E	2.63'
1005 - 1020	SEE CURVE 3 DATA	
1020 - 1002	N47° 40' 18"E	134.61'

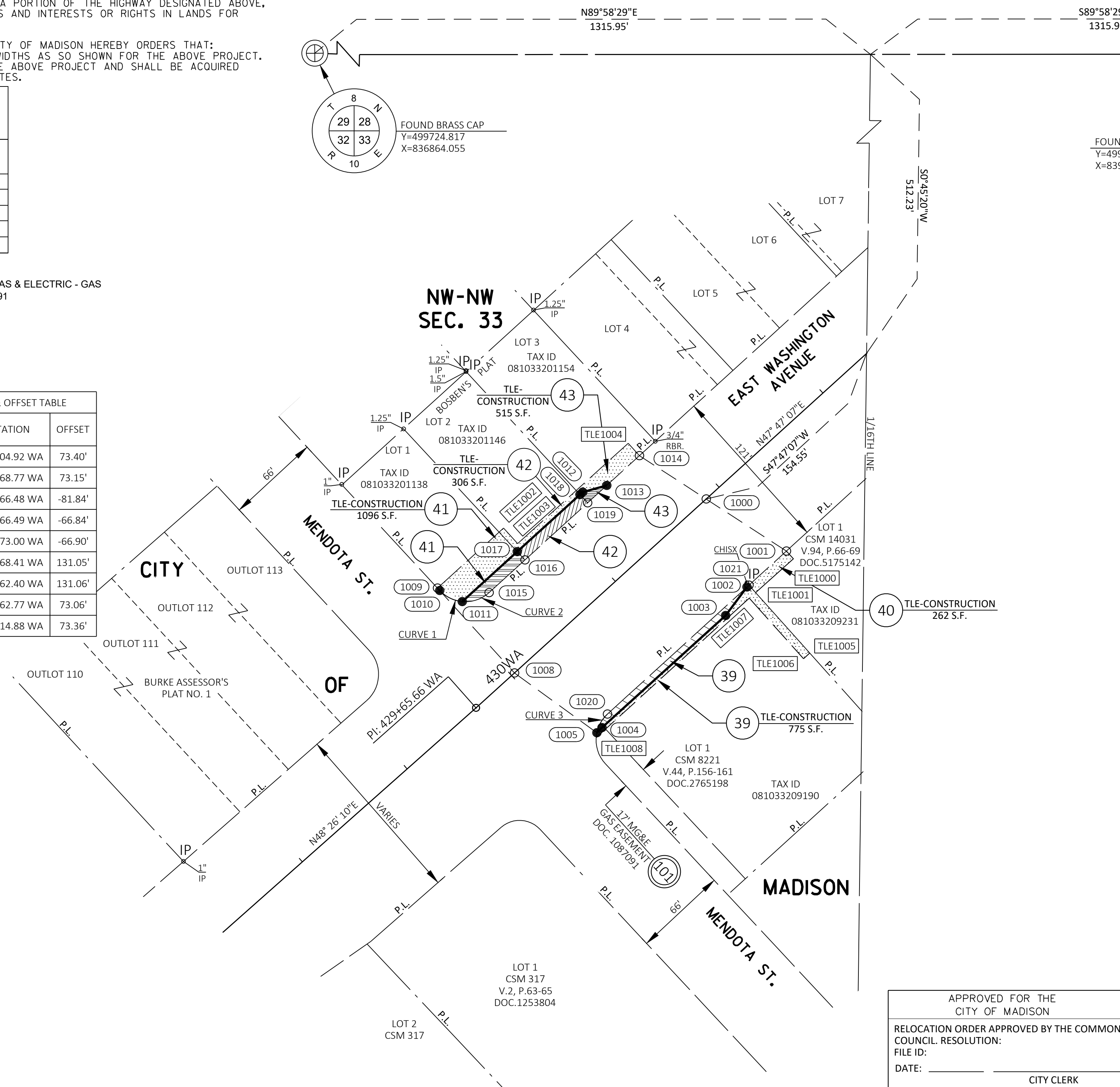
POINT	STATION	OFFSET	Y COORDS	X COORDS
1000	431+87.50 WA	0.00'	499109.371	838058.786
1001	432+04.91 WA	65.98'	499072.201	838116.012
1002	431+66.82 WA	66.06'	499046.552	838087.851
1003	431+41.92 WA	70.89'	499026.246	838072.659
1004	430+22.77 WA	70.81'	498946.239	837984.359
1005	430+17.57 WA	71.09'	498942.545	837980.700
1008	430+02.75 WA	0.00'	498985.234	837921.952
1009	430+02.75 WA	-81.81'	499045.823	837866.985
1010	430+02.77 WA	-79.43'	499044.074	837868.602
1011	430+09.31 WA	-62.81'	499036.162	837884.609
1012	431+25.51 WA	-62.87'	499114.285	837970.626
1013	431+41.49 WA	-54.89'	499119.111	837987.822
1014	431+73.00 WA	-54.96'	499140.332	838011.121
1015	430+27.82 WA	-54.67'	499042.569	837903.788
1016	430+62.42 WA	-54.74'	499065.873	837923.373
1017	430+62.35 WA	-62.84'	499071.820	837923.870
1018	431+22.87 WA	-62.87'	499112.514	837968.676
1019	431+22.95 WA	-54.86'	499106.630	837974.120
1020	430+32.21 WA	66.32'	498955.911	837988.337
1021	431+68.82 WA	66.05'	499047.899	838089.330

CURVE 1	CURVE 2	CURVE 3
(1010 - 1011)	(1015 - 1011)	(1005 - 1020)
R = 25.00'	R = 25.00'	R = 25.00'
L = 18.26'	L = 20.82'	L = 15.65'
LCH = 17.86'	LCH = 20.22'	LCH = 15.39'
LCB = S63° 41' 45"E	LCB = S71° 31' 37"W	LCB = N29° 44' 30"E
DELTA = 41° 50' 42" LT	DELTA = 47° 42' 36" RT	DELTA = 35° 51' 38" RT

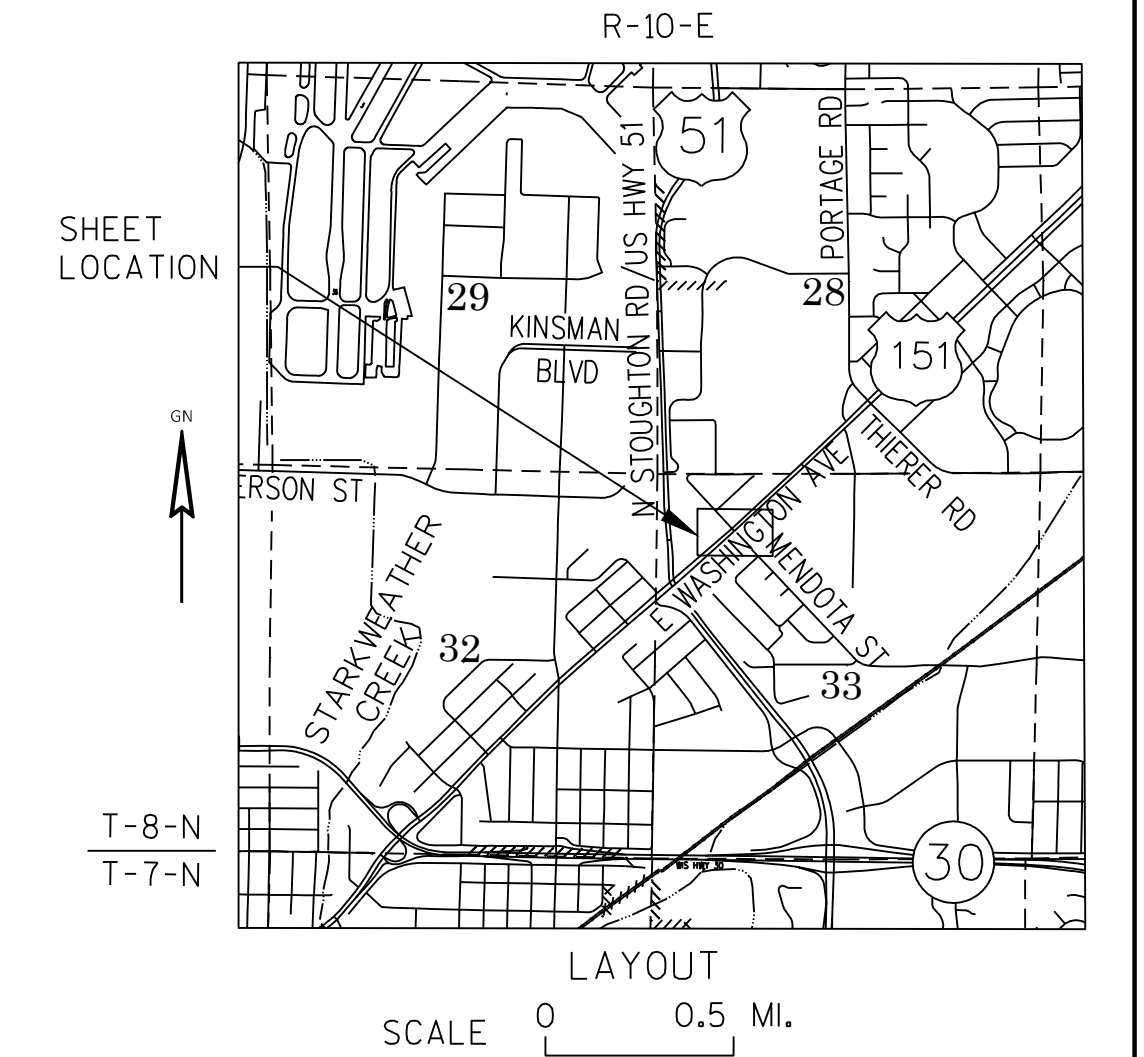
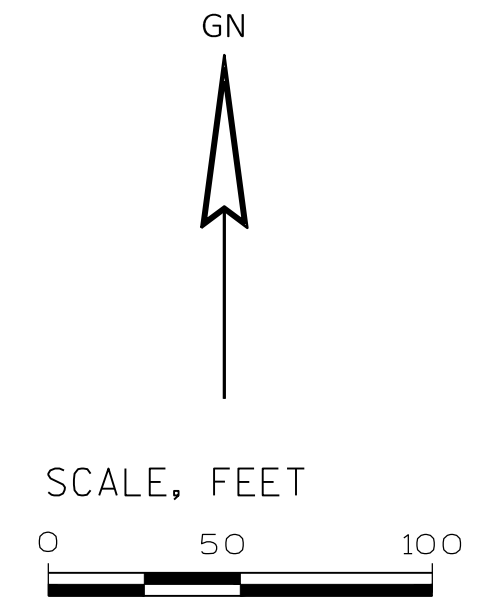
POSITIONS SHOWN ON THIS PLAT ARE WISCONSIN COORDINATE REFERENCE SYSTEM COORDINATES (WISCRS), DANE COUNTY, NAD83(2011), IN U.S. SURVEY FEET. VALUES ARE GRID COORDINATES, GRID BEARINGS, AND GRID DISTANCES. GRID DISTANCES MAY BE USED AS GROUND DISTANCES.

HWY	BASIS OF EXIST. R/W
EAST WASHINGTON AVENUE	PREVIOUS PROJECT: U5204(14), F017-2(24), MS 68-6, 5992-05-89, DIVISION JOB 1124 BURKE ASSESSOR'S PLAT NO. 1, BOSBEN'S PLAT, CSM 317, CSM 8221, CSM, 14031, CSM 14568, DOC. 1267601, DOC. 1269383, DOC. 1270048, DOC. 1268980, DOC. 1253804, DOC. 3997237, DOC. 3990425
MENDOTA STREET	PREVIOUS PROJECT: MS 68-6, 5992-05-89, BURKE ASSESSOR'S PLAT NO. 1, BOSBEN'S PLAT DOC. 1267601, DOC. 1269383, DOC. 1253804, DOC. 3990425, DOC. 1268980

ACCESS ON EAST WASHINGTON AVENUE CONTROLLED BY PREVIOUS PROJECT: CA 017-2(3)



RESERVED FOR REGISTER OF DEEDS  
 PROJECT NUMBER 12777-2-4.10  
 AMENDMENT NO: 1

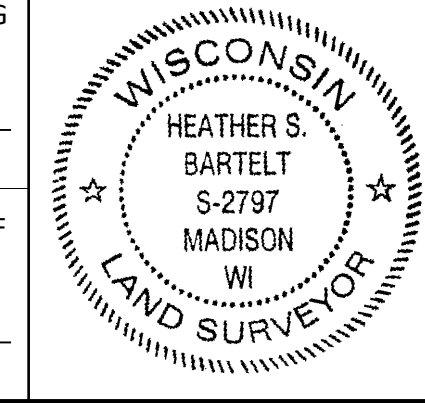


FOR ADDITIONAL INFORMATION REFER TO THE TITLE SHEET, RECORDED IN THE OFFICE OF REGISTER OF DEEDS IN DANE COUNTY AS SHEET 2 OF 2 OF DOCUMENT 5838770.

**STRAND ASSOCIATES, INC.**  
 910 WEST WINGRA DRIVE, MADISON, WI 53715  
 (608) 251-4843

I, HEATHER S. BARTELT, PROFESSIONAL LAND SURVEYOR, HEREBY CERTIFY THAT IN FULL COMPLIANCE WITH THE PROVISIONS OF SECTION 84.095 OF THE WISCONSIN STATUTES AND UNDER THE DIRECTION OF THE CITY OF MADISON, I HAVE SURVEYED AND MAPPED THIS TRANSPORTATION PROJECT PLAT AND SUCH PLAT CORRECTLY REPRESENTS ALL EXTERIOR BOUNDARIES OF THE SURVEYED LAND.

APPROVED FOR THE CITY OF MADISON  
 RELOCATION ORDER APPROVED BY THE COMMON COUNCIL RESOLUTION:  
 FILE ID: \_\_\_\_\_  
 DATE: \_\_\_\_\_ CITY CLERK  
 RELOCATION ORDER APPROVED BY THE PLANNING COMMISSION  
 DATE: \_\_\_\_\_ EXECUTIVE SECRETARY  
 RELOCATION ORDER APPROVED BY THE BOARD OF PUBLIC WORKS  
 DATE: \_\_\_\_\_ EXECUTIVE SECRETARY



SIGNATURE: *Heather S. Bartelt* DATE: 7/25/22  
 PRINT NAME: HEATHER S. BARTELT  
 REGISTRATION NUMBER: S-2797