

Night View



KEY NOTES:

A - Face lit channel logo to direct mounted to building fascia. Returns to be black Trim cap to be black. Logo face to be digitally printed to match logo colors

B - Face lit Aluminum channel letters. Returns to be black Trim cap to be black Letter face 3M Black perforated vinyl

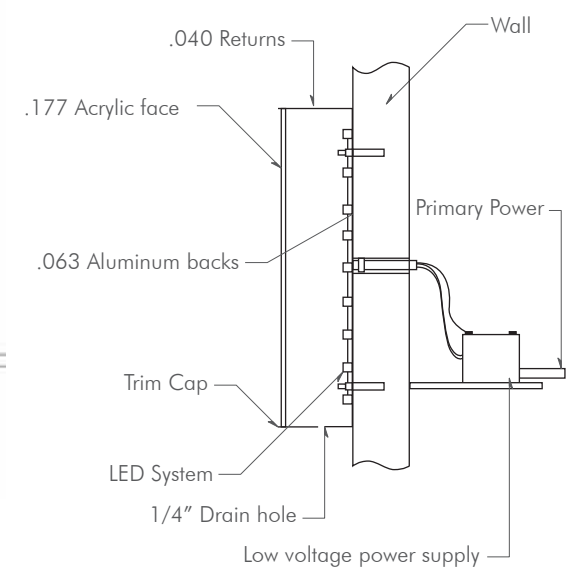
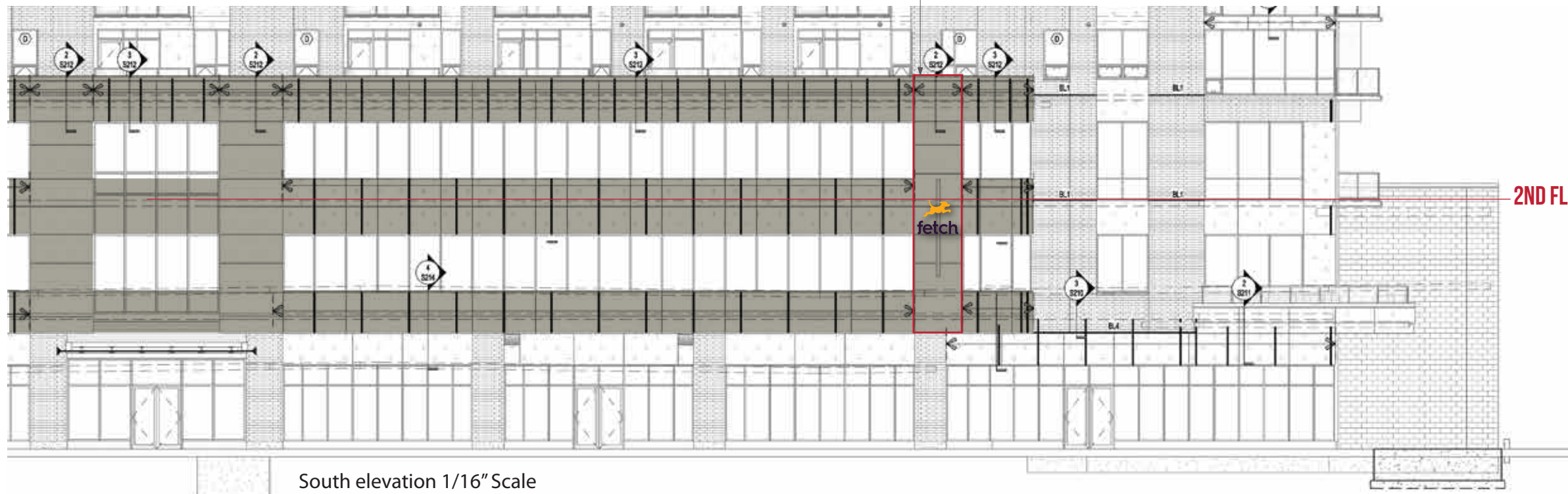
FINISHES:

- Digital print to match logo
- Digital print to match logo
- White Acrylic Faces
- 3M Purple perf stock
- Black (Returns/Trim)

CALCULATIONS:

BOX 1 = 9.11' SQ
BOX 2 = 8.61' SQ
TOTAL = 17.72' SQ

Mounting location





milwaukee 333 East Chicago Street
Milwaukee, Wisconsin 53202
414.271.5350
madison 305 West Johnson Street, Suite 202
Madison, Wisconsin 53703
608.442.5350
des moines 699 Walnut Street, Suite 400
Des Moines, Iowa 50309
515.724.5840
denver 1899 Wynkoop Street, Suite 300
Denver, Colorado 80202
303.595.4000

PROJECT INFORMATION

STONE HOUSE
MIXED USE
DEVELOPMENT

D 1050 EAST
WASHINGTON AVE
MADISON, WI 53703

ISSUANCE AND REVISIONS

DATE	DESCRIPTION
08/10/19	CONSTRUCTION DOCUMENTS

KEY PLAN

SHEET INFORMATION

PROJECT MANAGER JP
PROJECT NUMBER 718185

BUILDING
ELEVATIONS

A200

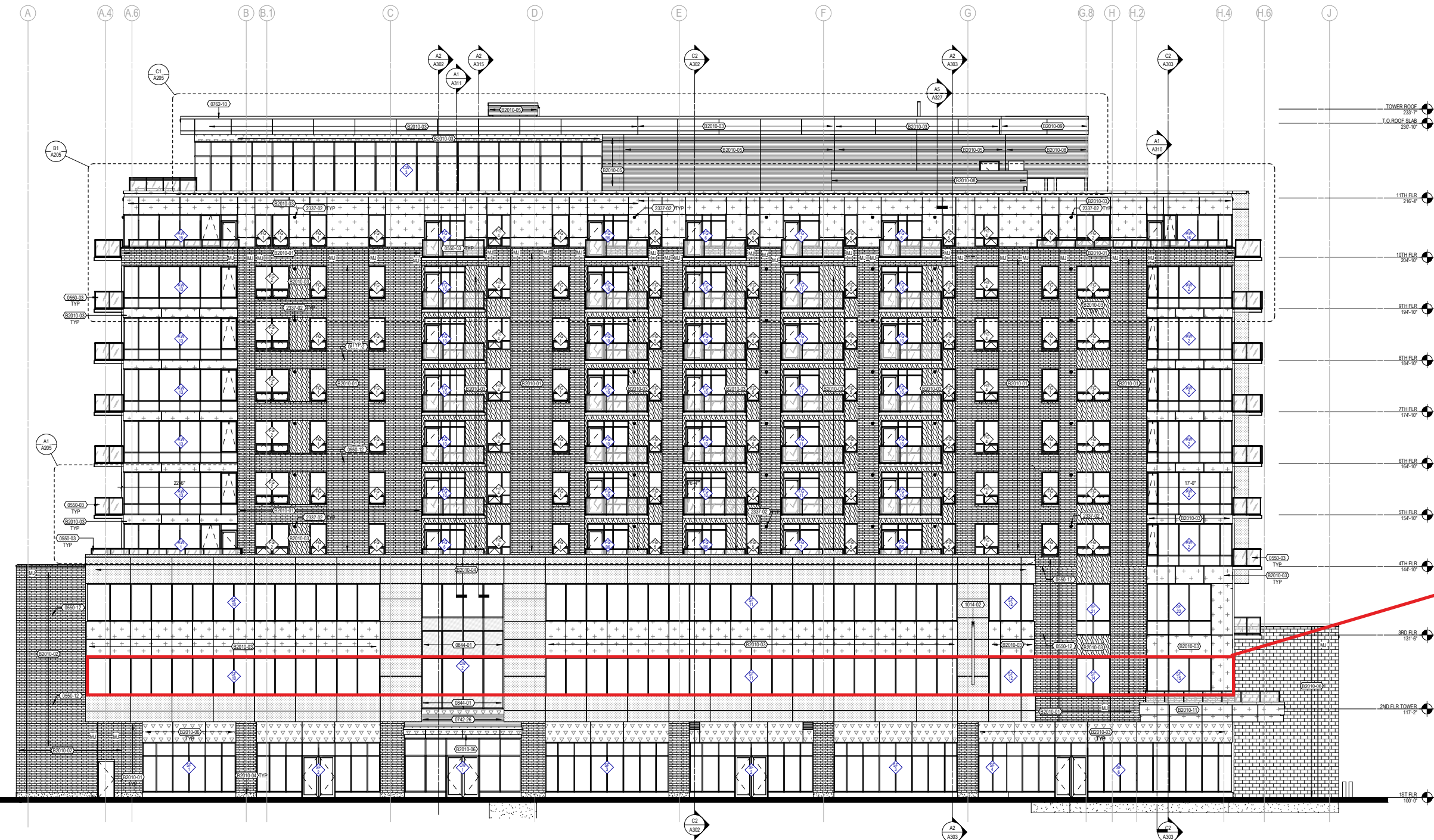
© Epstein Uhlen Architects, Inc.

EXTERIOR MATERIAL NOTES

- CORRUGATED METAL PANEL, PAC-CLAD HWP
CONCEALED FASTENER, COLOR: MEDIUM BRONZE
- PRECAST CONCRETE / CAST STONE, COLOR:
EDWARDS #43 LATTE, REFER TO KEYNOTES
- METAL COMPOSITE MATERIAL PANEL (DRY JOINT
SYSTEM), ALPOLIC MCM (MICA CHAMPAGNE)
- METAL COMPOSITE MATERIAL PANEL (DRY JOINT
SYSTEM), ALPOLIC MCM (GREEN)
- BRICK UTILITY - BELDEN CONCORD BLEND
- GLASS PANEL OF BALCONY RAILING
- METAL COMPOSITE MATERIAL PANEL (DRY JOINT
SYSTEM), COLOR - PAC-CLAD MEDIUM BRONZE
- CONCRETE MASONRY UNIT, GROUND FACE,
COLOR: TRENDSTONE ELMHURST
- CONCRETE MASONRY UNIT ACCENT, GROUND
FACE,
COLOR: TRENDSTONE LT. BROWN

KEYNOTES PER SHEET

0550-03	SURFACE MOUNTED POWDER COATED METAL GUARDRAIL WITH GLASS INFILL PANELS. HORIZONTAL RAILS AND POSTS ARE COMPOSED OF 2" METAL SQUARE TUBES, POSTS MOUNTED TO 5" X 5" BASE PLATES, THAT ARE ANCHORED TO THE CONCRETE.
0550-12	GALVANIZED STEEL ANGLE. SEE STRUCTURAL DRAWINGS.
0742-26	CORRUGATED METAL PANEL.
0762-10	PREFINISHED METAL FASCIA W/ 3/4" DRIP AND HEMMED EDGE.
0844-01	ALUMINUM-FRAMED CURTAIN WALL.
1014-02	VERTICAL SIGNAGE.
2337-02	ALUMINUM FRESH-AIR-INTAKE CAP. PREFINISH TO MATCH ADJACENT PANEL OR BRICK COLOR.
62010-01	EXTERIOR WALL WITH FACING BRICK AND METAL STUDS (SEE SHEET A000 FOR ASSEMBLY INFORMATION)
62010-02	EXTERIOR WALL WITH FACING BRICK AND CONCRETE MASONRY UNITS (SEE SHEET A000 FOR ASSEMBLY INFORMATION)
62010-03	EXTERIOR WALL WITH MCM PANEL AND METAL STUDS (SEE SHEET A000 FOR ASSEMBLY INFORMATION)
62010-04	EXTERIOR WALL WITH MCM PANEL AND METAL STUDS (SEE SHEET A000 FOR ASSEMBLY INFORMATION)
62010-05	EXTERIOR WALL WITH CORRUGATED METAL PANEL (SEE SHEET A000 FOR ASSEMBLY INFORMATION)
62010-06	SINGLE WYTHE P CONCRETE MASONRY UNIT EXTERIOR WALL (SEE SHEET A000 FOR ASSEMBLY INFORMATION)
62010-08	SCREEN WALL WITH EXTERIOR CORRUGATED METAL PANEL. MATCH TO ADJACENT CORRUGATED METAL PANEL (SEE SHEET A000 FOR ASSEMBLY INFORMATION)
62010-09	SCREEN WALL WITH MCM PANEL. MATCH TO ADJACENT MCM PANEL (SEE SHEET A000 FOR ASSEMBLY INFORMATION)
62010-11	



A1 SOUTH BUILDING ELEVATION
1/8" = 1'-0"

PROPOSED SIGN LOCATIONS

SIGNAGE AREA

SIGN REQUIREMENTS:

MAX SQUARE FOOTAGE = 20' SQ. FT.

NEW SIGNS TO BE ONLY LOCATED IN YELLOW AREAS

LOGO ONLY

EXTERIOR MATERIAL NOTES	
	CORRUGATED METAL PANEL, PAC-CLAD HWP CONCEALED FASTENER, COLOR: MEDIUM BRONZE
	PRECAST CONCRETE / CAST STONE, COLOR: EDWARDS #43 LATTE, REFER TO KEYNOTES
	METAL COMPOSITE MATERIAL PANEL (DRY JOINT SYSTEM), ALPOLIC MCU (MICA CHAMPAGNE)
	METAL COMPOSITE MATERIAL PANEL (DRY JOINT SYSTEM), ALPOLIC MCU (GREEN)
	BRICK UTILITY - BELDEN CONCORD BLEND
	GLASS PANEL OF BALCONY RAILING
	METAL COMPOSITE MATERIAL PANEL (DRY JOINT SYSTEM), COLOR - PAC CLAD MEDIUM BRONZE
	CONCRETE MASONRY UNIT, GROUND FACE, COLOR: TRENDSTONE ELIMURST
	CONCRETE MASONRY UNIT ACCENT, GROUND FACE, COLOR: TRENDSTONE LT. BROWN

KEYNOTES PER SHEET	
0550-03	SURFACE MOUNTED POWDER COATED METAL GUARDRAIL WITH GLASS INFILL PANELS, HORIZONTAL RAILS AND POSTS ARE COMPOSED OF 2" METAL SQUARE TUBES, POSTS MOUNTED TO 5" X 5" BASE PLATES, THAT ARE ANCHORED TO THE CONCRETE.
0550-10	GALVANIZED STEEL ANGLE, SEE STRUCTURAL DRAWINGS
0742-26	CORRUGATED METAL PANEL
0762-10	PREFINISHED METAL FASCIA W/ 3/4" DRIP AND HEMMED EDGE
0844-01	ALUMINUM FRAMED CURTAIN WALL
1014-02	VERTICAL SIGNAGE
2337-02	ALUMINUM FRESH-AIR-INTAKE CAP, PREFINISH TO MATCH ADJACENT PANEL OR BRICK COLOR
62010-01	EXTERIOR WALL WITH FACING BRICK AND METAL STUDS (SEE SHEET A000 FOR ASSEMBLY INFORMATION)
62010-02	EXTERIOR WALL WITH FACING BRICK AND CONCRETE MASONRY UNITS (SEE SHEET A000 FOR ASSEMBLY INFORMATION)
62010-03	EXTERIOR WALL WITH MCM PANEL AND METAL STUDS (SEE SHEET A000 FOR ASSEMBLY INFORMATION)
62010-04	EXTERIOR WALL WITH MCM PANEL AND METAL STUDS (SEE SHEET A000 FOR ASSEMBLY INFORMATION)
62010-05	EXTERIOR WALL WITH CORRUGATED METAL PANEL (SEE SHEET A000 FOR ASSEMBLY INFORMATION)
62010-06	SINGLE WYTHE 8" CONCRETE MASONRY UNIT EXTERIOR WALL (SEE SHEET A000 FOR ASSEMBLY INFORMATION)
62010-08	SCREEN WALL WITH EXTERIOR CORRUGATED METAL PANEL, MATCH TO ADJACENT CORRUGATED METAL PANEL (SEE SHEET A000 FOR ASSEMBLY INFORMATION)
62010-09	SCREEN WALL WITH MCM PANEL, MATCH TO ADJACENT MCM PANEL (SEE SHEET A000 FOR ASSEMBLY INFORMATION)
62010-11	



milwaukee 333 East Chicago Street
Milwaukee, Wisconsin 53202
414.271.5350

madiſon 309 West Johnson Street, Suite 202
Madison, Wisconsin 53703
608.442.5350

des moines 699 Walnut Street, Suite 400
Des Moines, Iowa 50309
515.724.5840

denver 1899 Wynkoop Street, Suite 300
Denver, Colorado 80202
303.595.4500

PROJECT INFORMATION

STONE HOUSE
MIXED USE
DEVELOPMENT

1050 EAST
WASHINGTON AVE
MADISON, WI 53703

ISSUANCE AND REVISIONS

DATE	DESCRIPTION
08/19/19	CONSTRUCTION DOCUMENTS

KEY PLAN

3RD FLOOR LINE
SHEET INFORMATION

PROJECT MANAGER JP
PROJECT NUMBER 718185

BUILDING
ELEVATIONS

A200

© Epstein Uhen Architects, Inc.





 **PROPOSED SIGN LOCATIONS**

FETCH SIGN TO BE 31' IN HEIGHT TO THE TOP

GEBHARDT BUILDING



SPARK BUILDING



- 1st floor signs are approx. at 11' in height to top.
- Vintage Brewery Sign is mounted on the under 10' in height.
- 2nd floor signs are approx. at 30' in height to top.