
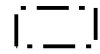
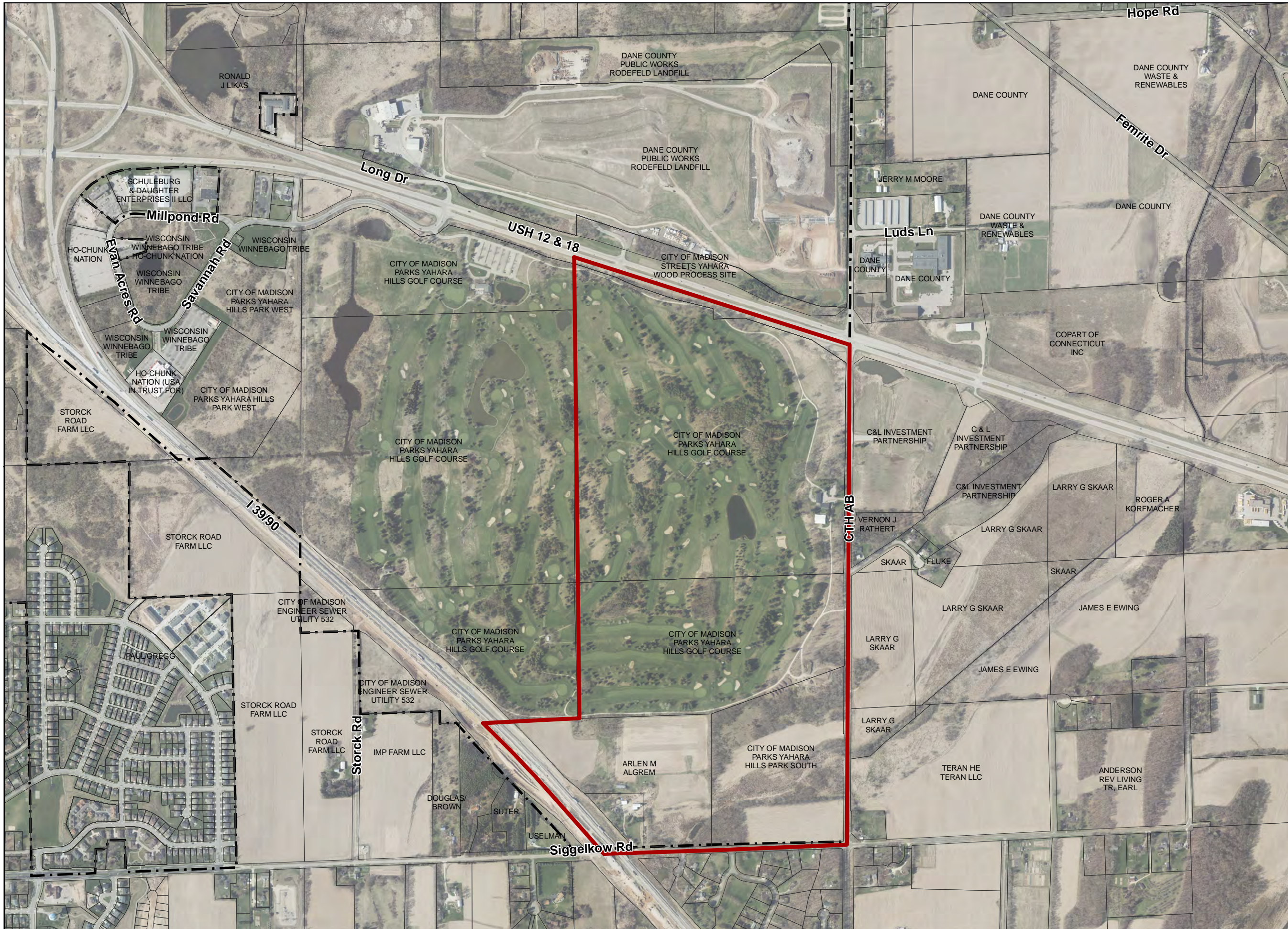


### Map 1: Planning Area

#### Yahara Hills Neighborhood Development Plan Amendment

 Amendment Area


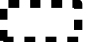


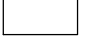
 City of Madison Boundary

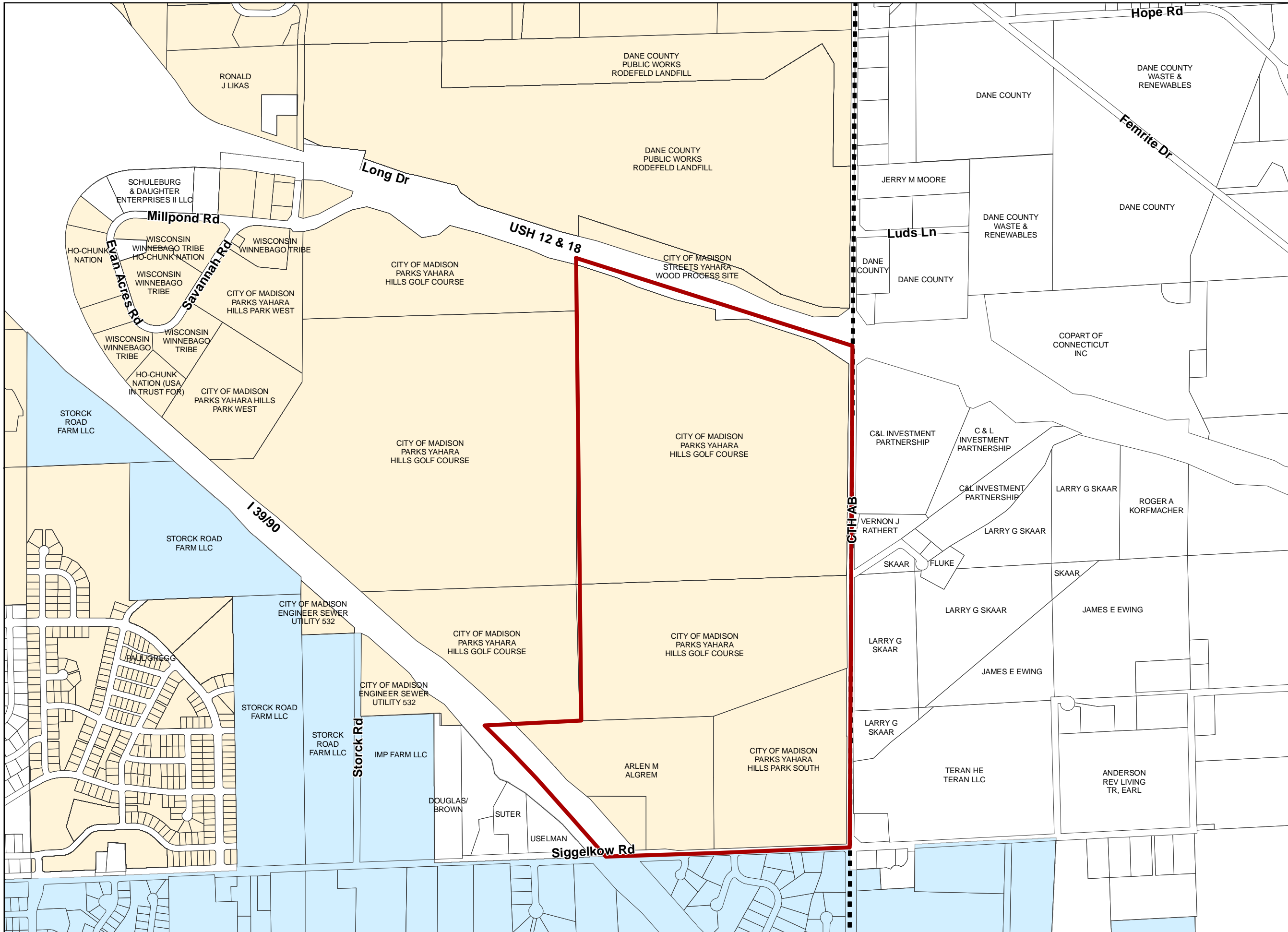




# Map 2: Municipal Jurisdiction & Property Ownership

## Yahara Hills Neighborhood Development Plan Amendment

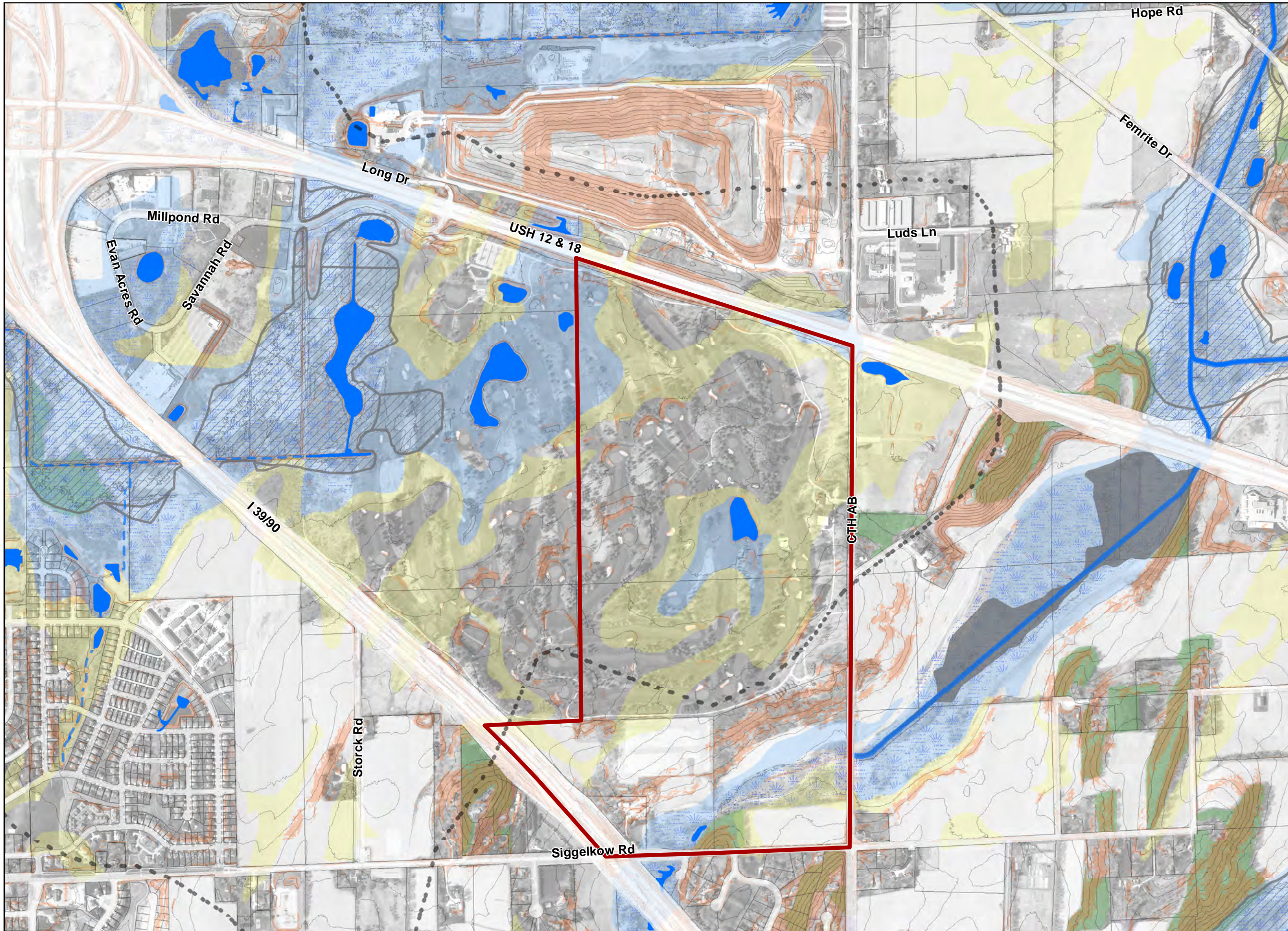
-  Amendment Area
-  Town Line
-  City of Madison
-  Village of McFarland
-  Town of Blooming Grove/Cottage Grove





### Map 3: Natural Features

Yahara Hills Neighborhood Development Plan Amendment



Amendment Area

Major Ridgeline

Surface Water

Wetlands

#### Floodplain (2014)

Without Base Flood Elevation (Zone A)

Regulatory Floodway (Zone AE)

Hydic Soils

Soils with Hydic Inclusions

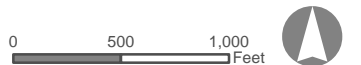
Slopes 12% or Greater

Wooded Area

Perennial Stream

Intermittent Stream







10 ft Elevation Contour



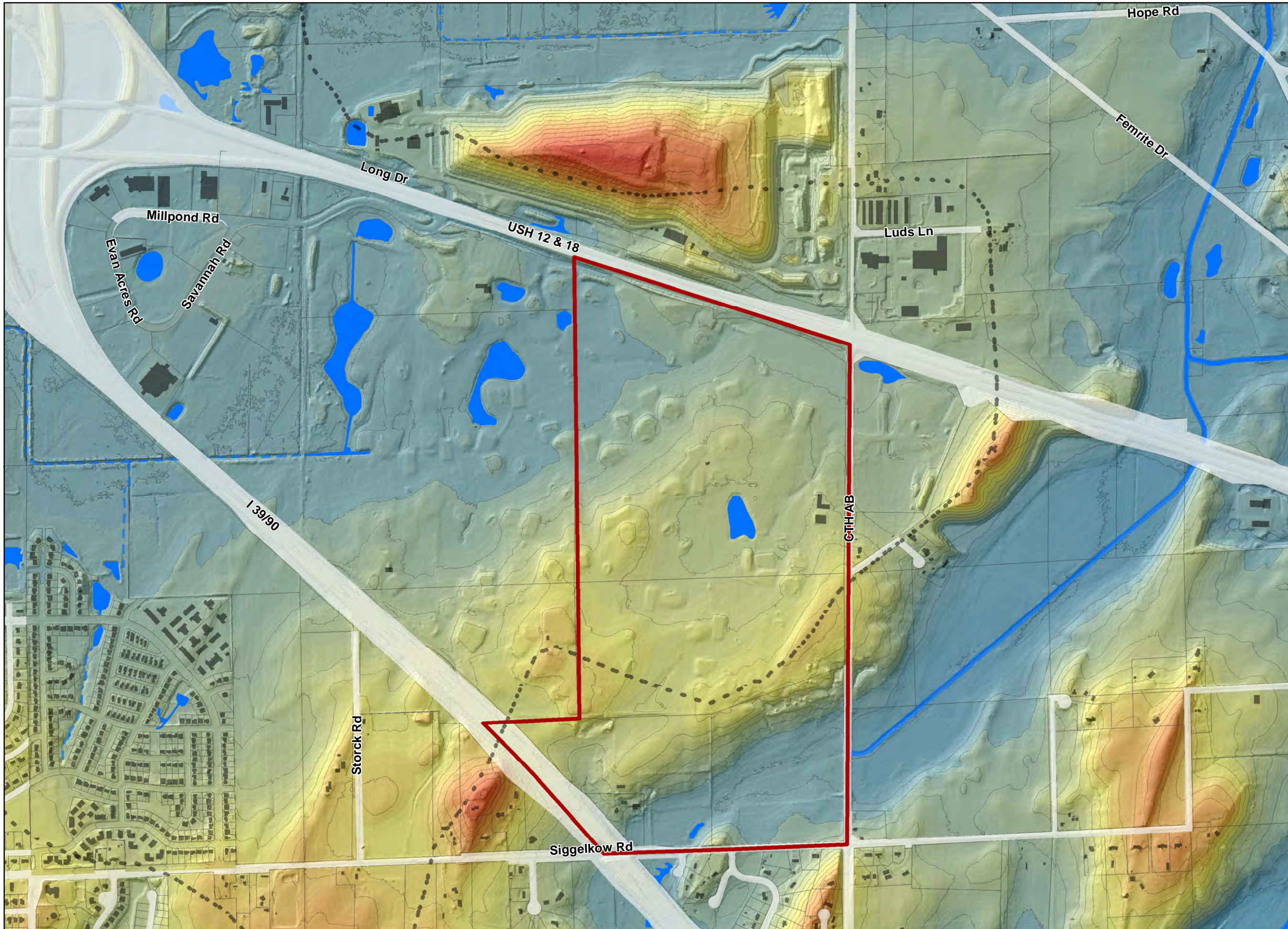


**Map 4: Elevation**

**Yahara Hills Neighborhood  
Development Plan Amendment**

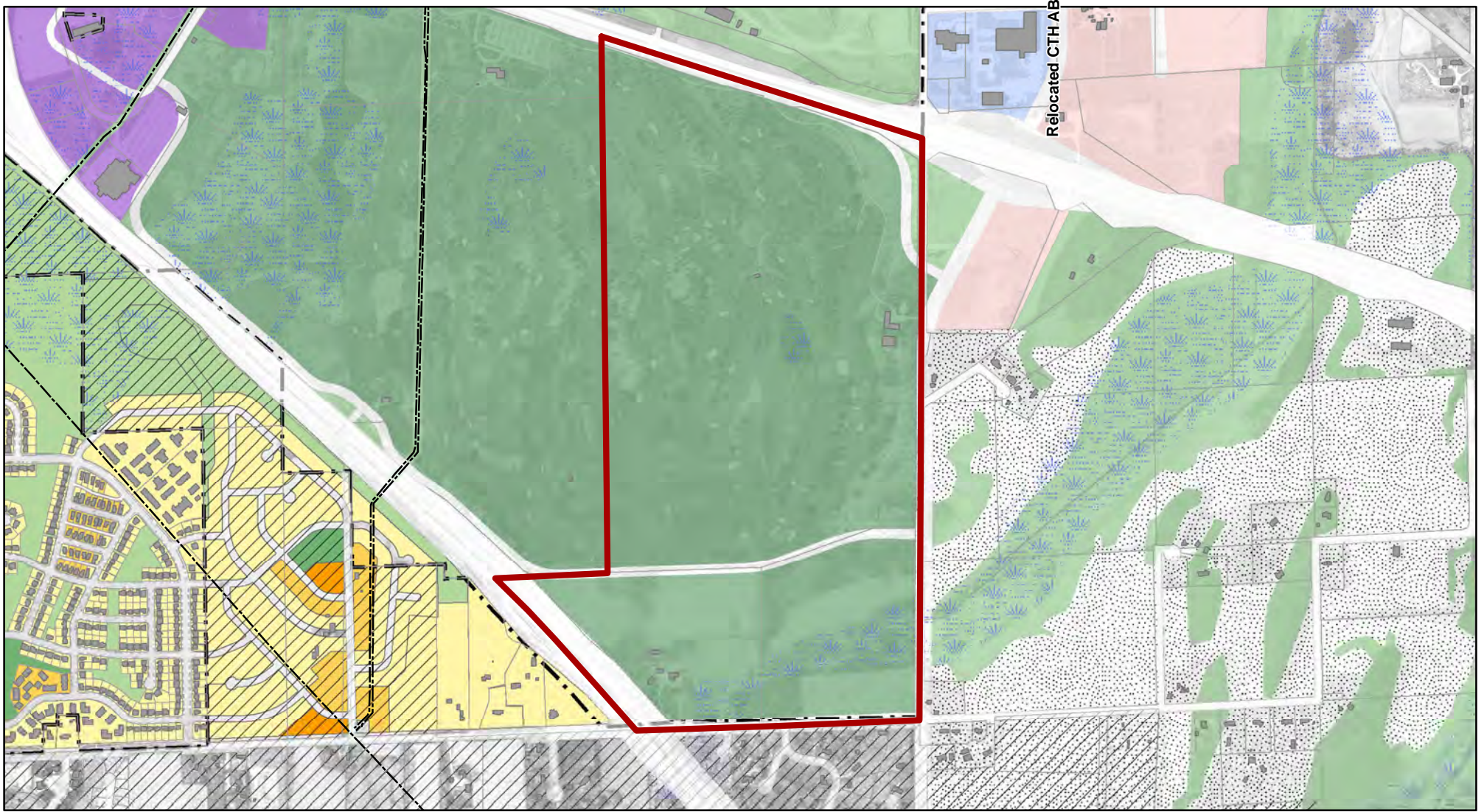
-  Amendment Area
-  Major Ridgeline
-  Surface Water
-  Perennial Stream
-  Intermittent Stream
-  10 ft Elevation Contour

- Elevation**
-  High
  - 
  - 
  - 
  -  Low

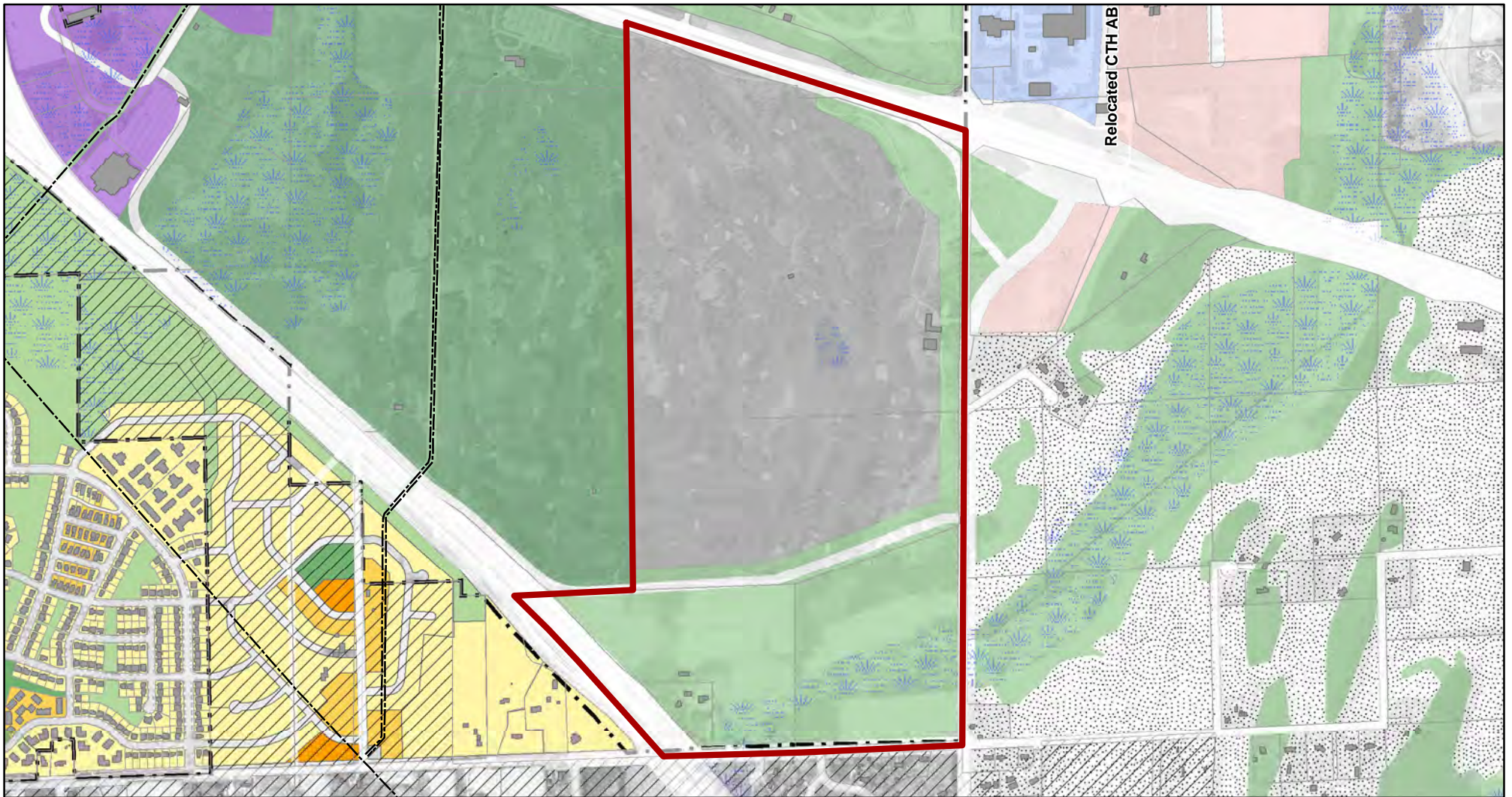




# Yahara Hills Neighborhood Development Plan as Adopted January 2017

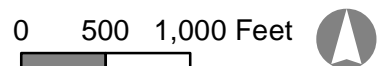
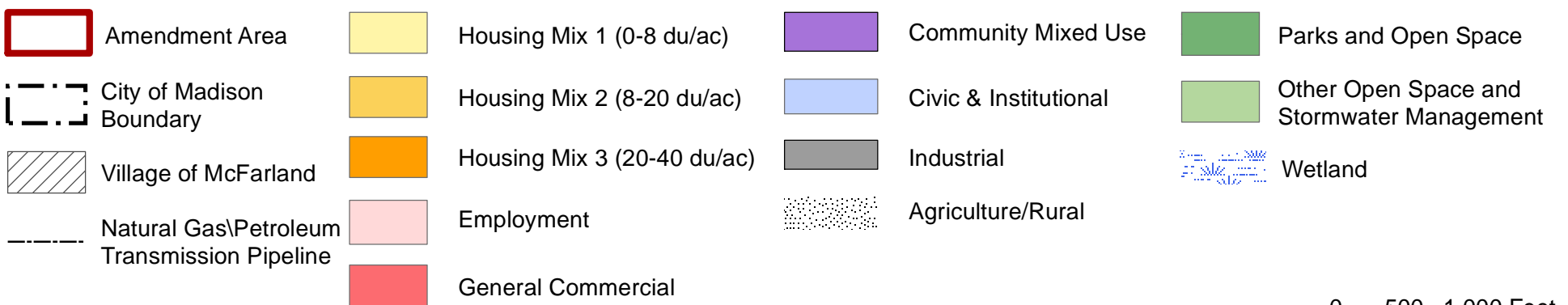


## Proposed Neighborhood Development Plan Amendment



### Future Land Use and Street Plan









**DRAFT**

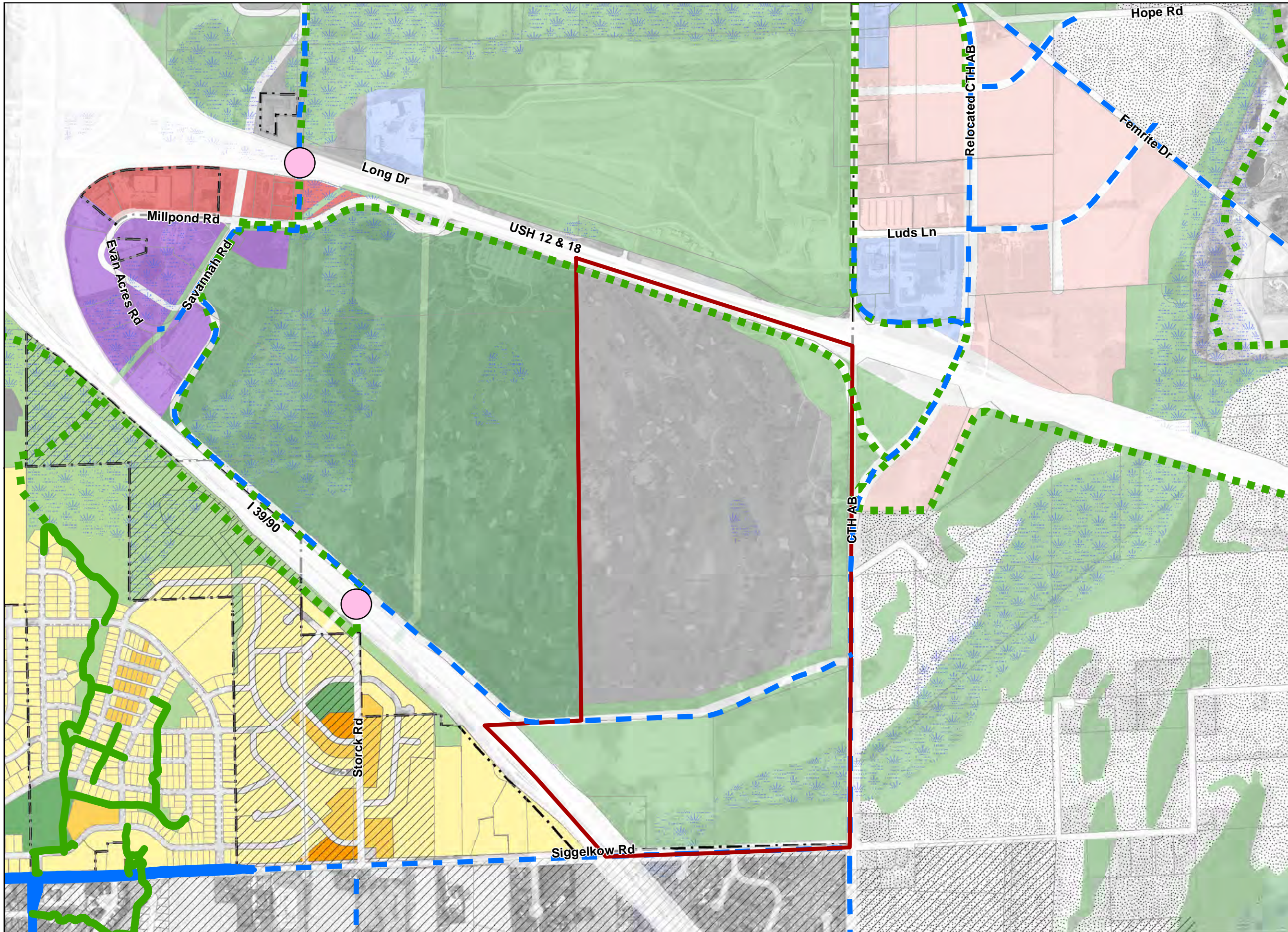




**Map 6: Transportation  
Pedestrian/Bicycle Facilities**

**Yahara Hills Neighborhood  
Development Plan Amendment**




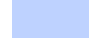





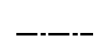

-  Amendment Area
-  City of Madison Boundary
-  Planned Overpass/Underpass
-  Existing Shared-Use Path
-  Proposed Shared-Use Path
-  Existing On-Street Bicycle Facility
-  Proposed On-Street Bicycle Facility
-  Village of McFarland

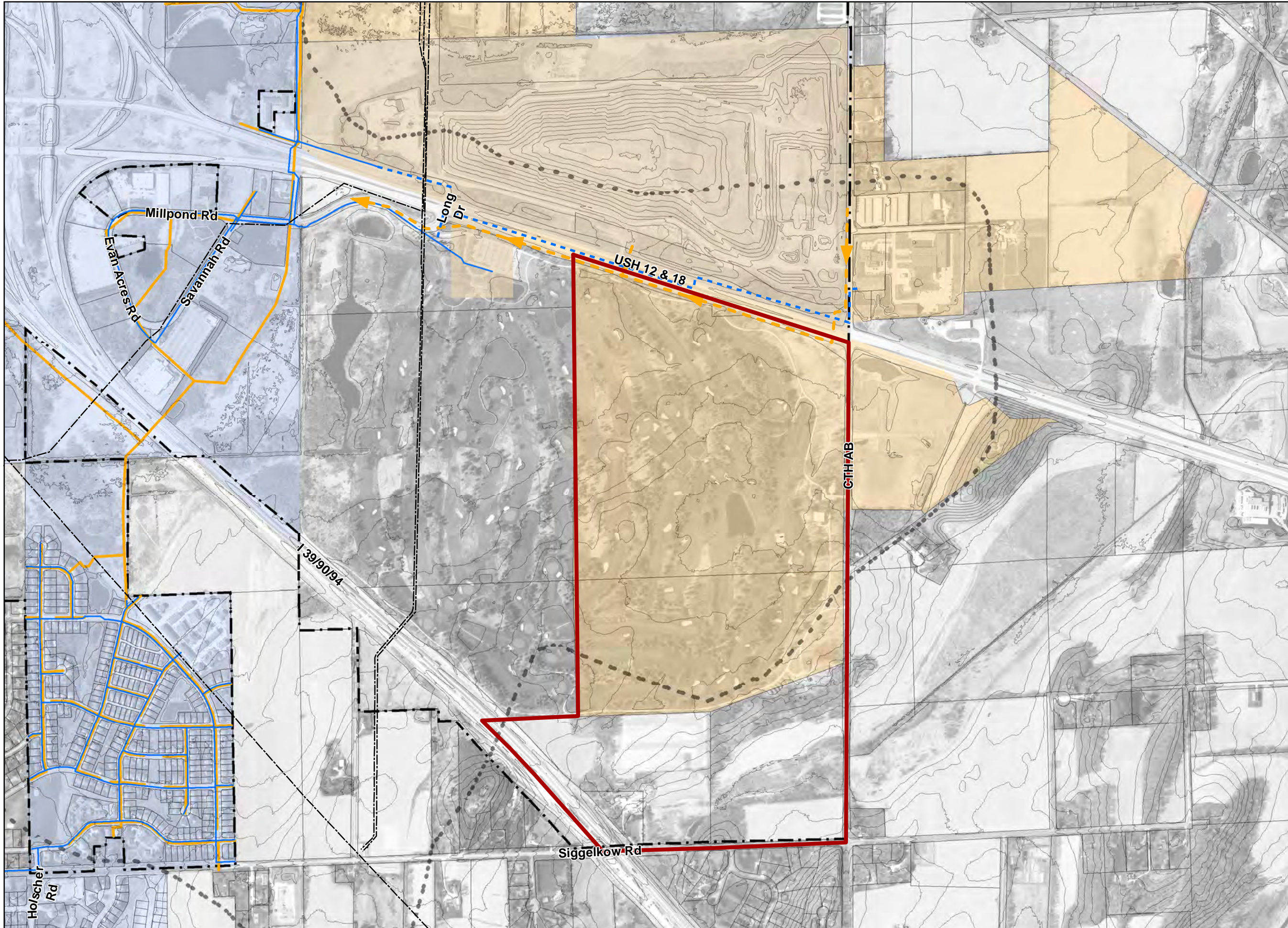




### Map 7: Utilities

#### Yahara Hills Neighborhood Development Plan Amendment

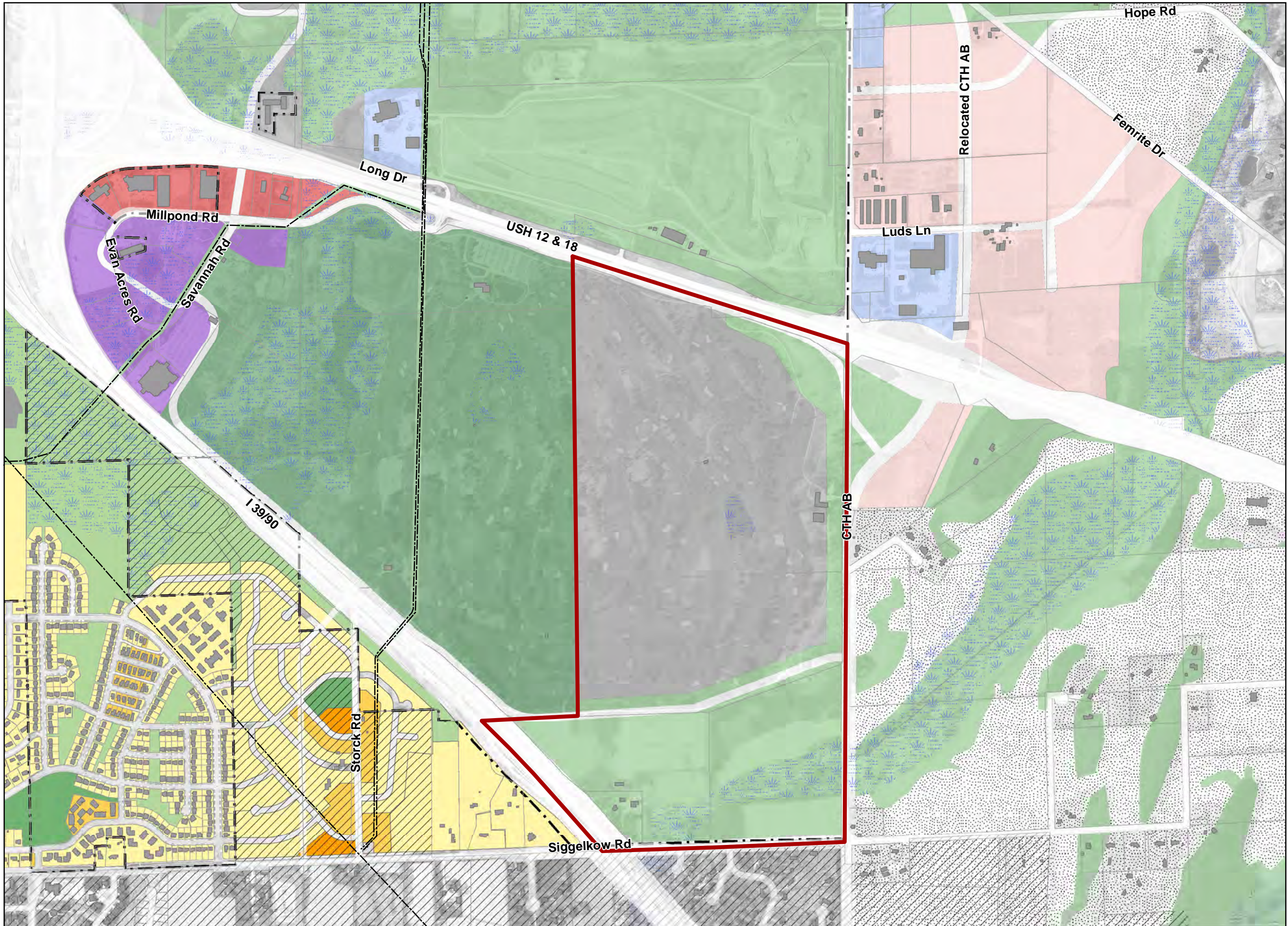
-  Amendment Area
-  City of Madison Boundary
-  Major Ridgeline
-  Central Urban Service Area
-  Proposed Central Urban Service Area
-  10 Foot Elevation Contour
-  Water Main
-  Sanitary Main
-  Planned Sanitary Sewer Gravity Main
-  Natural Gas/Petroleum Transmission Pipeline
-  Planned Water Main










### Map 8: Future Land Use and Street Plan

#### Yahara Hills Neighborhood Development Plan Amendment



-  Amendment Area
-  City of Madison Boundary
-  Housing Mix 1 (0-8 du/ac)
-  Housing Mix 2 (8-20 du/ac)
-  Housing Mix 3 (20-40 du/ac)
-  Employment
-  General Commercial
-  Community Mixed Use
-  Civic & Institutional
-  Parks and Open Space
-  Other Open Space and Stormwater Management
-  Industrial
-  Agriculture/Rural
-  Wetland
-  Village of McFarland
-  Natural Gas/Petroleum Transmission Pipeline

