

**Time:** 5/9/2018 11:19:44 AM

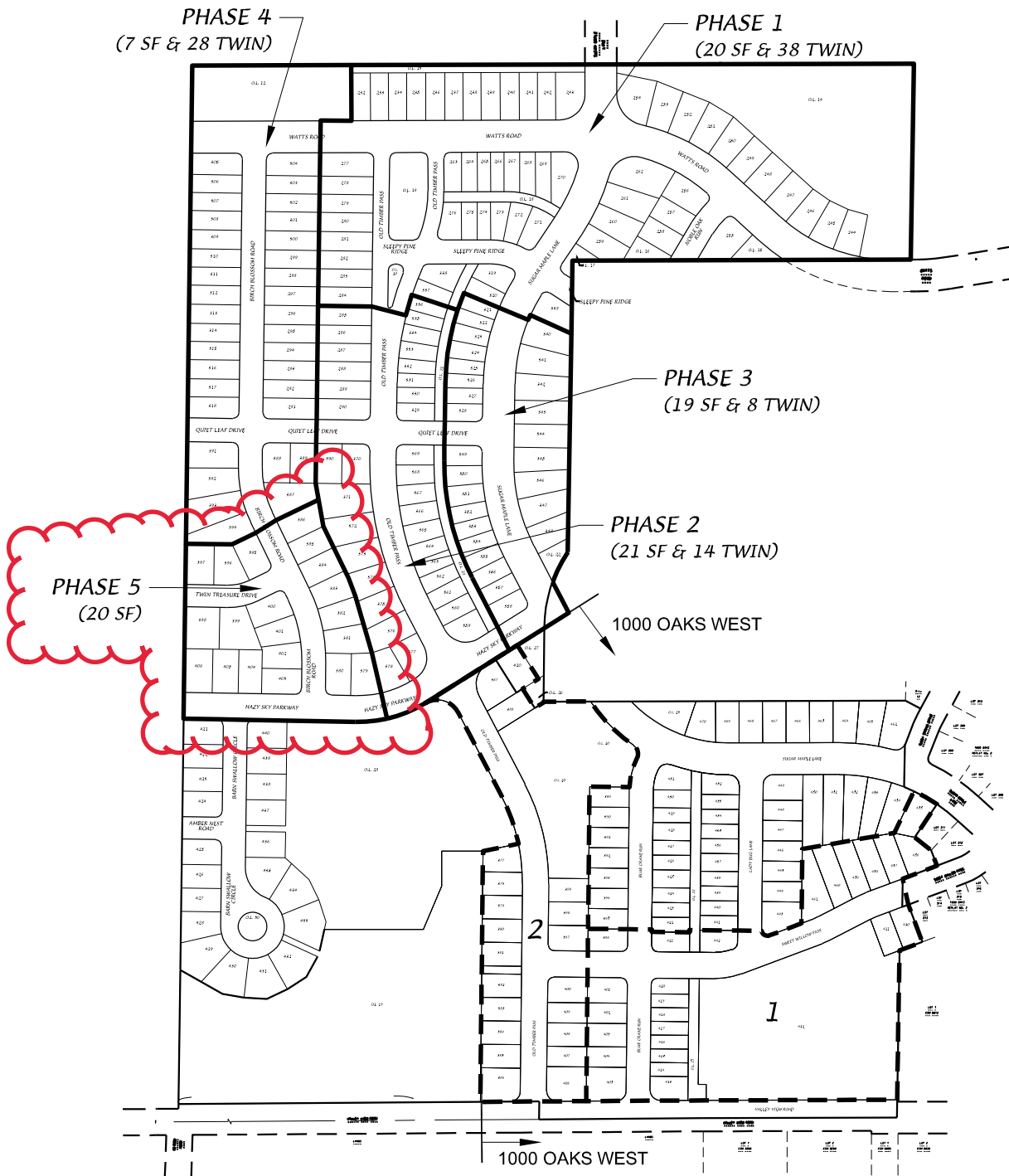
**Session:** C:\GTViewer\_Sessions\Deming & Fourier SW.gts

**City of Madison, WI - GIS/Mapping data**

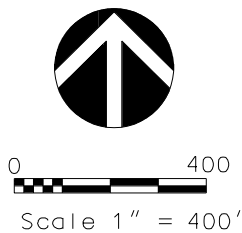
Printed By: entnt

Disclaimer: The City makes no representation about the accuracy of these records and shall not be liable for any damages

# Birchwood Point South - Phase Map



**D'ONOFRIO KOTTKE AND ASSOCIATES, INC.**  
 7530 Westward Way, Madison, WI 53717  
 Phone: 608.833.7530 • Fax: 608.833.1089  
 YOUR NATURAL RESOURCE FOR LAND DEVELOPMENT



DATE: 07-28-21  
 REV.:  
 F.N.: 20-05-146  
 DRAWN BY: ATF

