

Madison Metropolitan Sewerage District



1610 Moorland Road • Madison, WI 53713-3398 • P: (608) 222-1201 • F: (608) 299-2129

November 2, 2021

Dear Resident/Business Owner/Owner,

The City of Madison Board of Public Works will hold a public hearing on the issue of allowing construction activities, with associated noise impacts, outside the period of 7 a.m. to 7 p.m. for the Northeast Interceptor Joint Grouting MH10-106 to MH10-101 project work along Nakoosa Trail, Commercial Avenue, the Blettner Wetland, Blettner Boulevard, and Regas Road. Please see the project map on the reverse side of this letter. The Public Hearing pertaining to noise will be held virtually on Wednesday, Nov. 17, 2021 at 5 p.m. For more information, please visit www.cityofmadison.com/city-hall/committees/meeting-schedule.

Madison General Ordinance Section 24.08(3) provides the Common Council the ability to allow construction activities outside of the hours of 7 a.m. to 7 p.m. with the passage of a resolution and a hearing before the Board of Public Works.

Madison Metropolitan Sewerage District plans to joint grout the conveyance sewer along the Marsh View Bike Path between Highway 30 and West Corporate Drive. This project, which uses trenchless technology, will rehabilitate existing infrastructure to continue to serve the needs of the community. The typical Contractor working hours for this project are between 7 p.m. to 7 a.m. The work taking place on this project cannot be constructed between the hours of 7 a.m. and 7 p.m. because:

- Flow levels in the interceptor are too high between 7 a.m. and 7 p.m. to complete the work. Off-hour work takes advantage of low diurnal flows in the evening and early morning time periods.

The proposed activities beyond the hours of 7 a.m. and 7 p.m. are as follows:

- Access to manhole structures for televising & cleaning and joint grouting.

The estimated dates are as follows:

- Noise variance related construction activities will commence in approximately January 2022 and will take approximately five months to complete.
- This timeframe is approximate and will be more clearly defined as the work areas are identified or as weather and unforeseen circumstances dictate.

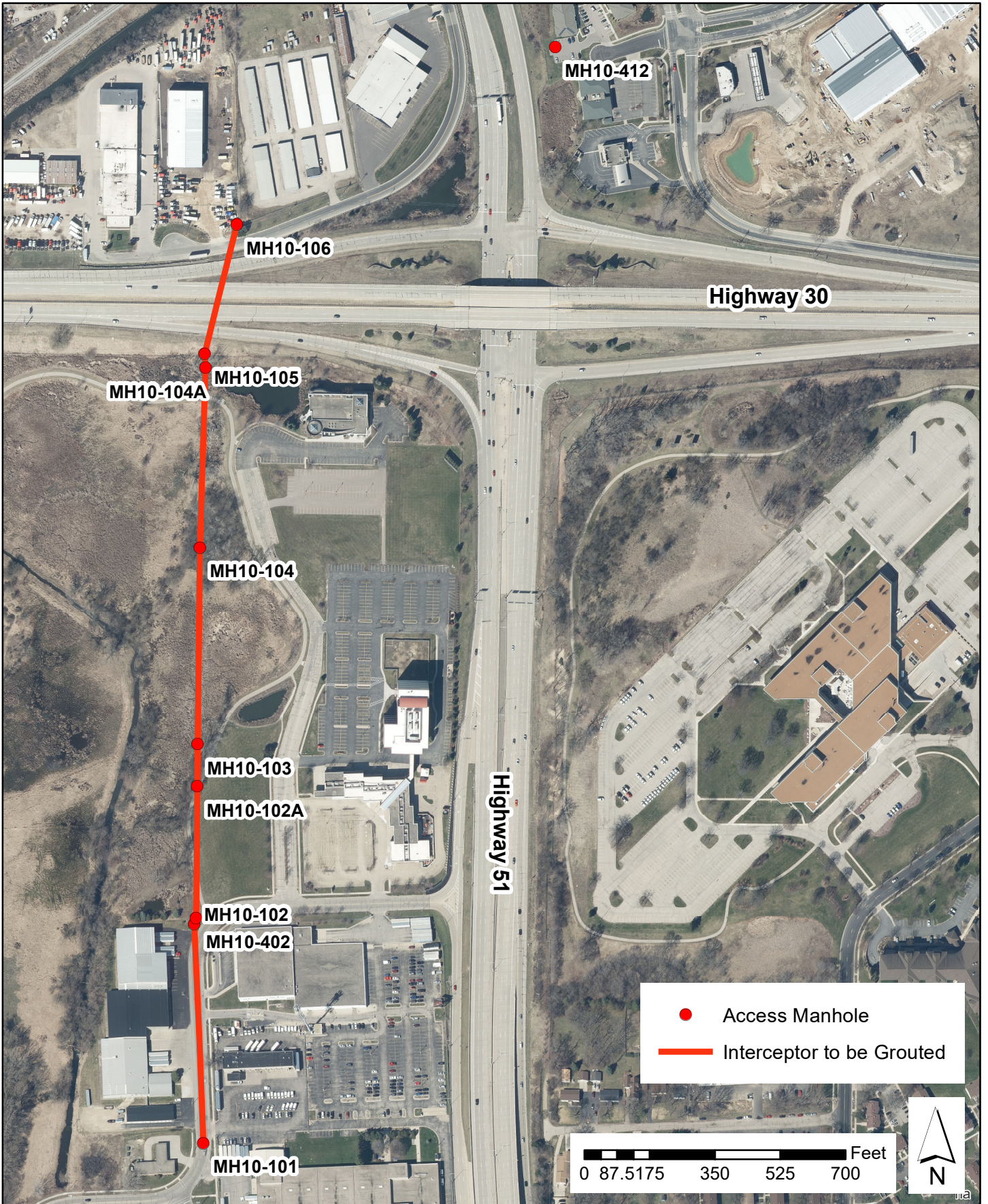
Please contact me if you have any questions or need additional information. I can be reached at rachelf@madsewer.org or at 608-628-1214.

Sincerely,

A handwritten signature in black ink that reads "Rachel J. Feil".

Rachel Feil, P.E., ENV SP
Project Engineer I

CC: Ald. Grant Foster, City of Madison
Greg Fries, City of Madison
Michael Mucha, Madison Metropolitan Sewerage District



**Madison Metropolitan
Sewerage District**

**Northeast Interceptor Joint Grouting
MH10-106 to MH10-101 Project**

Prepared by: RJF

Date: 10/01/2021