

Vision Zero Advance Projects

DEPARTMENT OF



TRANSPORTATION

Madison Capital Budget

Common Council allocated \$350,000 in Capital Funds for Vision Zero Advance Projects in the 2020 budget

11	Traffic Engineering	Vision Zero Traffic Safety	Alder Foster	Alder Heck, Alder Lemmer, Alder Verveer, Alder Bidar, Alder Rummel, Alder Evers, Alder Tierney, Alder Kemble	350,000	0	350,000	0	41,031
----	---------------------	----------------------------	--------------	--	---------	---	---------	---	--------

DEPARTMENT OF



TRANSPORTATION

Vision Zero focuses on Speed

20
mph



13%
OF PEDESTRIANS
WILL DIE OR SUFFER
A SEVERE INJURY IF
HIT BY A VEHICLE AT
20 MPH

30
mph



40%
OF PEDESTRIANS
WILL DIE OR SUFFER
A SEVERE INJURY IF
HIT BY A VEHICLE AT
30 MPH

40
mph



73%
OF PEDESTRIANS
WILL DIE OR SUFFER
A SEVERE INJURY IF
HIT BY A VEHICLE AT
40 MPH

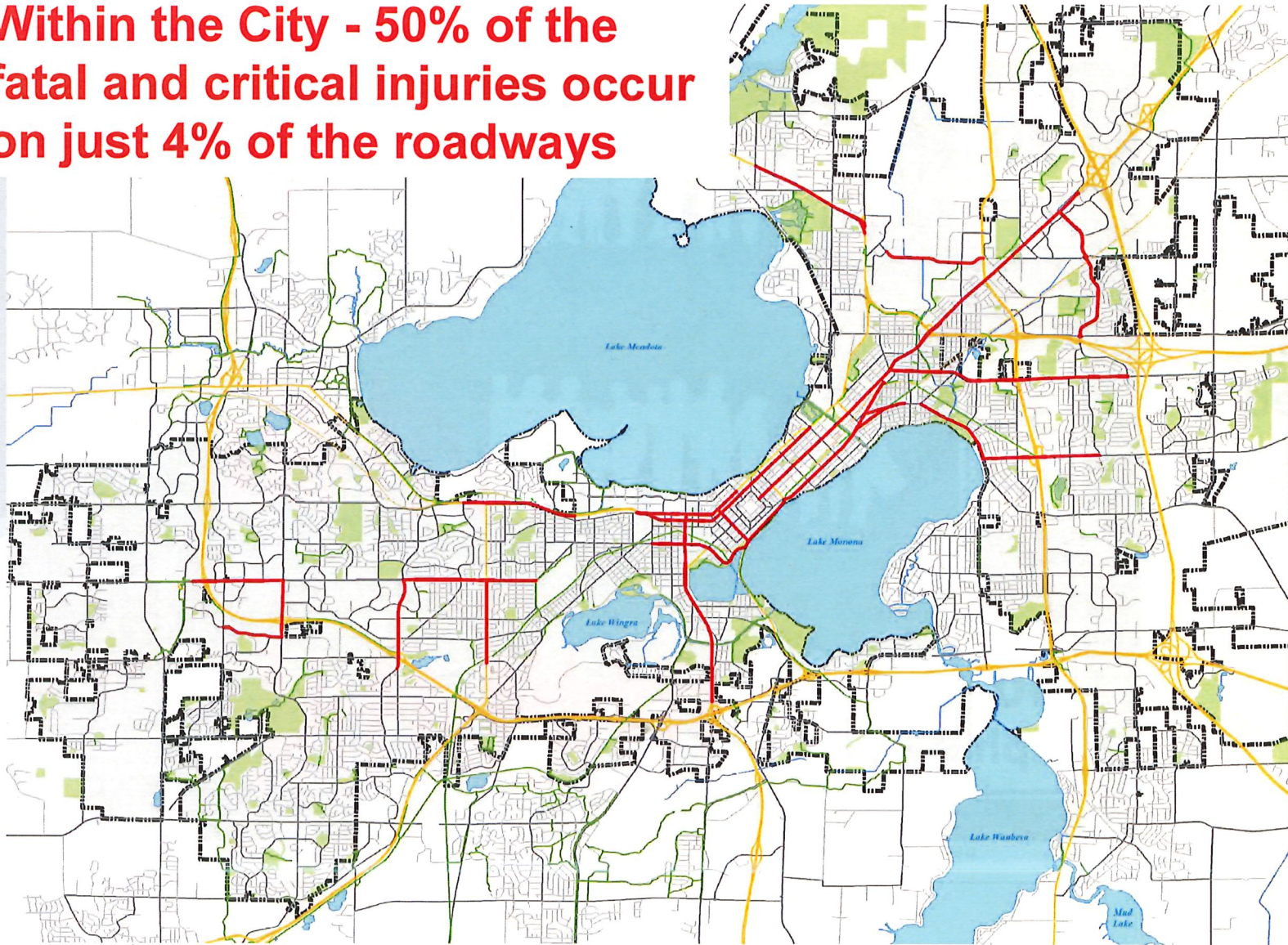
Source: Brian T. Tefft. 2013. *Impact of speed on a pedestrian's risk of severe injury or death.*

DEPARTMENT OF



TRANSPORTATION

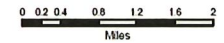
Within the City - 50% of the fatal and critical injuries occur on just 4% of the roadways



**City of Madison
High Injury Network
2014-2018**



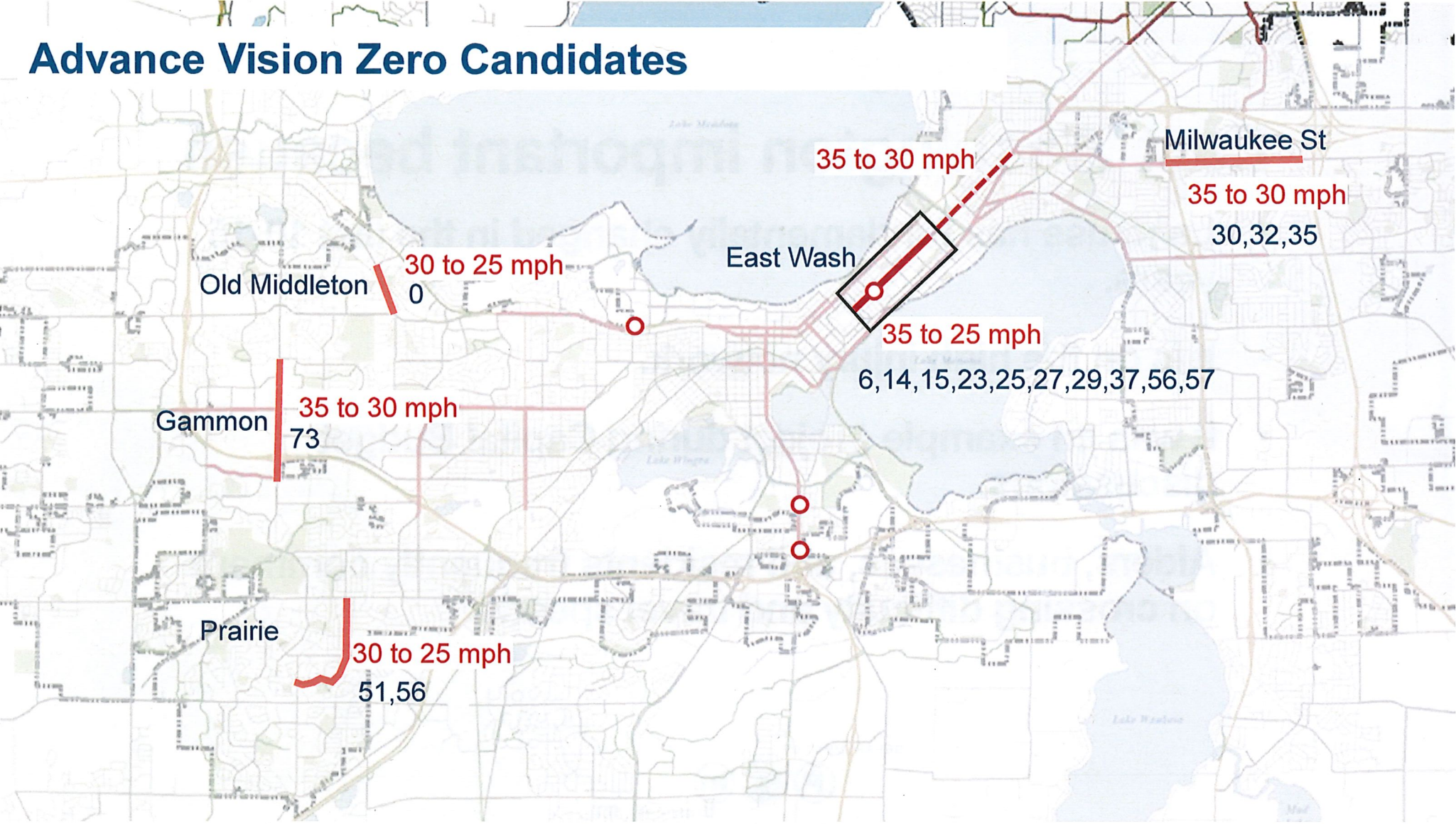
— High Injury Network



Coordinate System: NAD 1983 HARN WISCONS DUNE COUNTY FEET
Projection: Lambert Conformal Conic

Date Revised: 11/18/2019

Advance Vision Zero Candidates



East Washington important because

- Land use has fundamentally changed in the last 10-15 years.
- It is on the high injury network.
- It was an example project during Capital Budget discussions.
- Alders, businesses, and residents frequently comment on crossing difficulty and travel speeds.

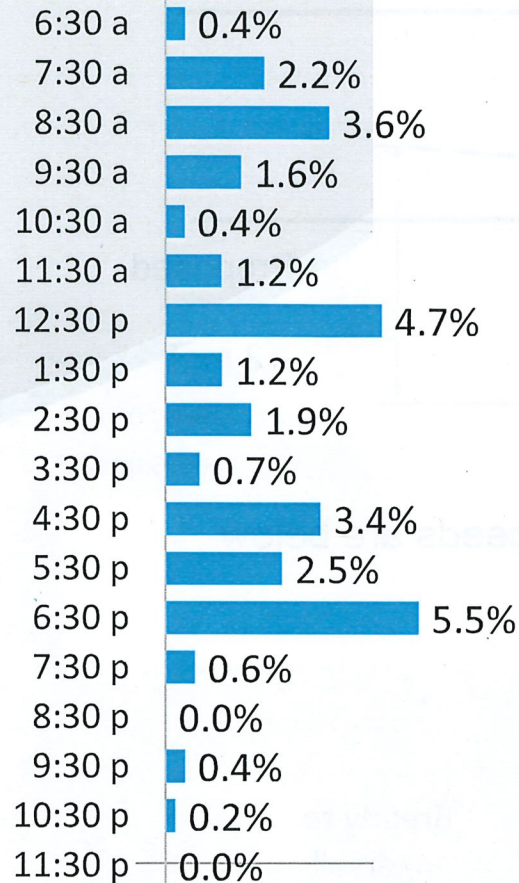
DEPARTMENT OF



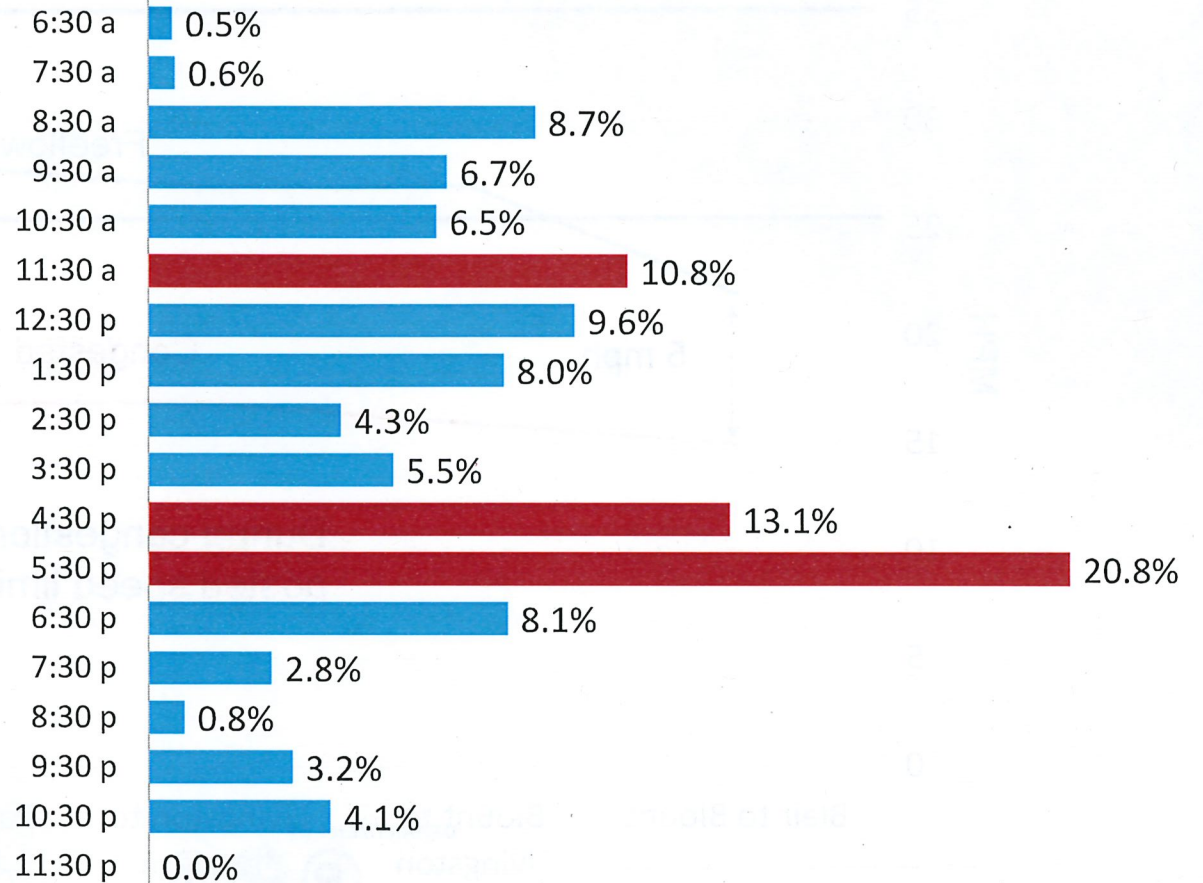
TRANSPORTATION

Challenges with On-time Performance

Route 6 Inbound Late Arrivals

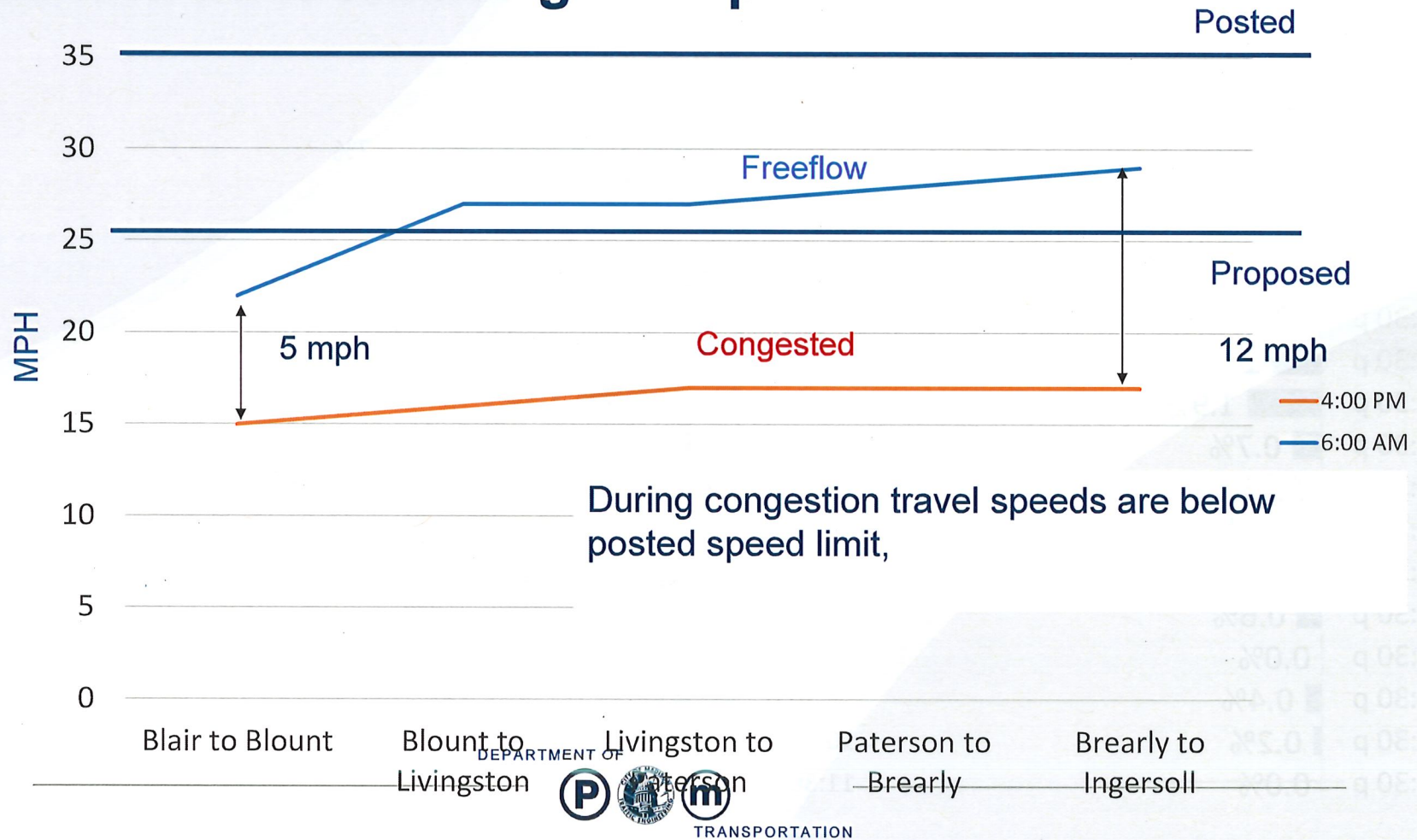


Route 6 Outbound Late Arrivals



Probe Data Analysis

Outbound East Washington 4 pm



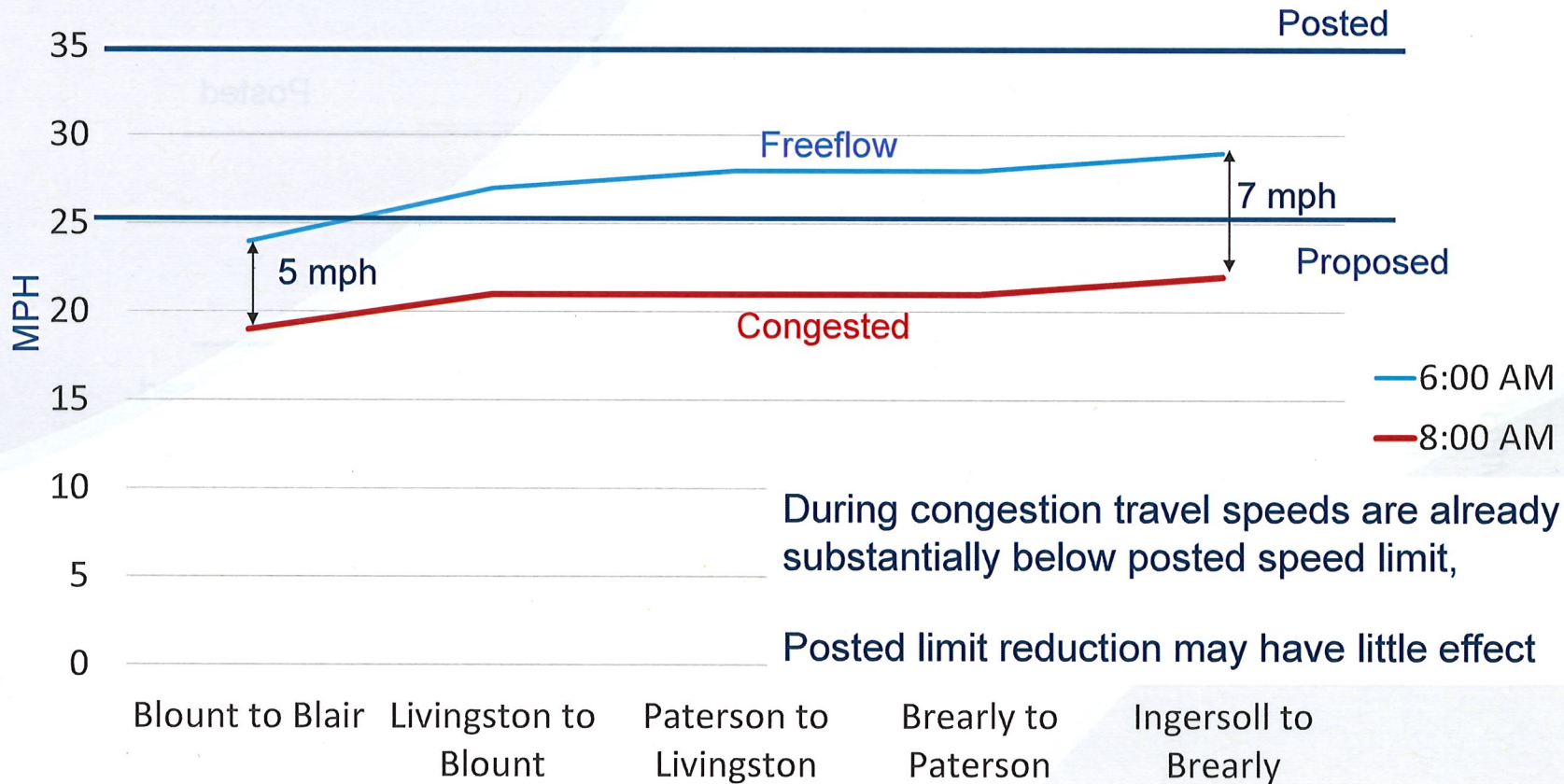
Outbound East Washington - noon



During congestion travel speeds are already substantially below posted speed limit,
 Posted limit reduction may have little effect

- Blair to Blount
- Blount to Livingston
- Livingston to Paterson
- Paterson to Brearly
- Brearly to Ingersoll

Inbound East Washington – 8 am



During congestion travel speeds are already substantially below posted speed limit,

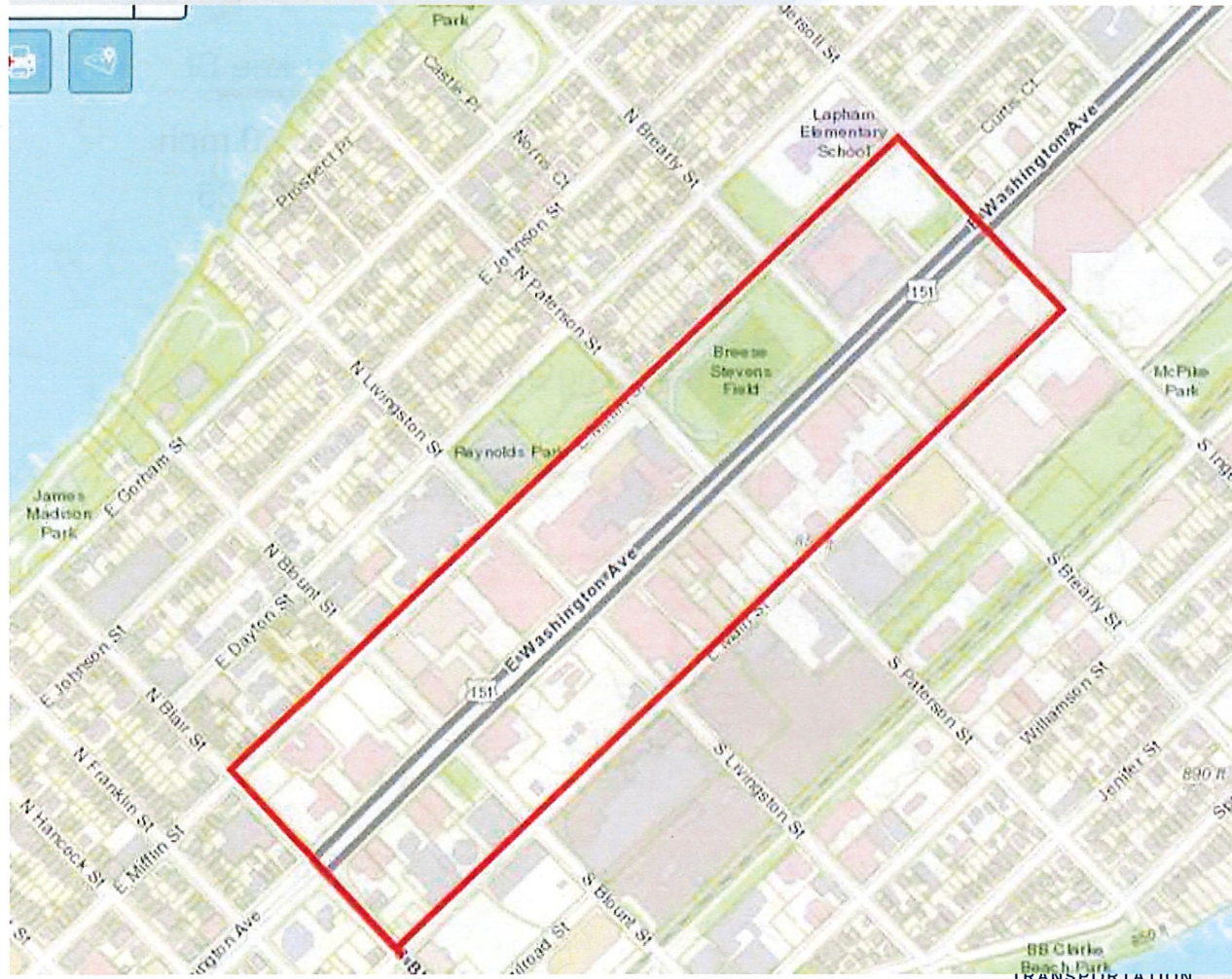
Posted limit reduction may have little effect

DEPARTMENT OF

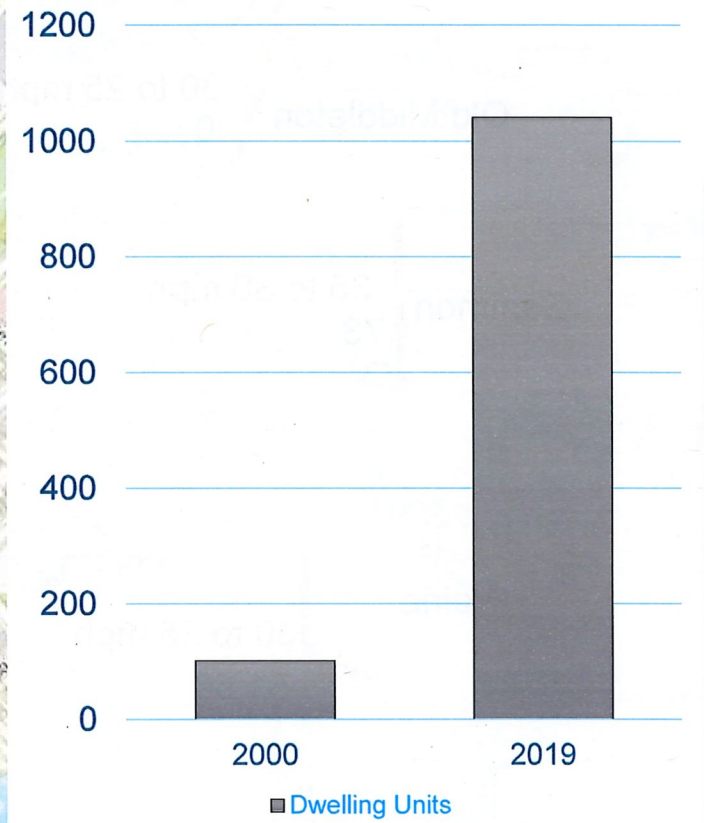


TRANSPORTATION

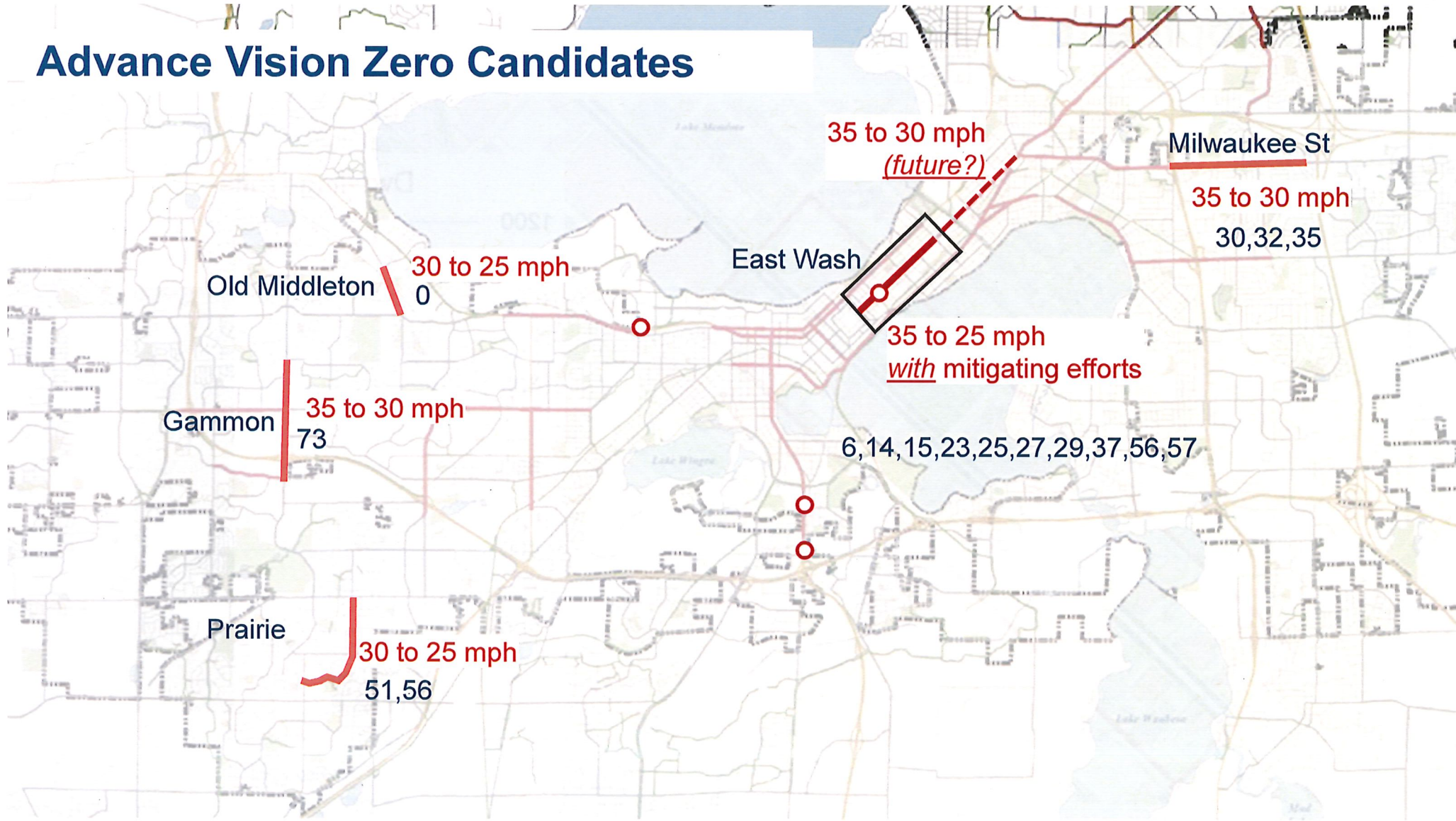
Development



Dwelling Units



Advance Vision Zero Candidates



East Washington Mitigative Measures

- **Parking restrictions on East Wash for 150 feet, both sides, both directions near Baldwin**
- **Parking restrictions East Wash between Railroad and First Street**
- **(Pending 5339b grant measures)**
- **Review 25 mph signal progression for buses.**

DEPARTMENT OF



TRANSPORTATION