

APPLICATION FOR
URBAN DESIGN COMMISSION
REVIEW AND APPROVAL

AGENDA ITEM # _____
Project # _____
Legistar # 23412

DATE SUBMITTED: <u>07.18.12</u>	Action Requested
UDC MEETING DATE: <u>07.25.12</u>	<input type="checkbox"/> Informational Presentation
	<input type="checkbox"/> Initial Approval and/or Recommendation
	<input checked="" type="checkbox"/> Final Approval and/or Recommendation

PLEASE PRINT!

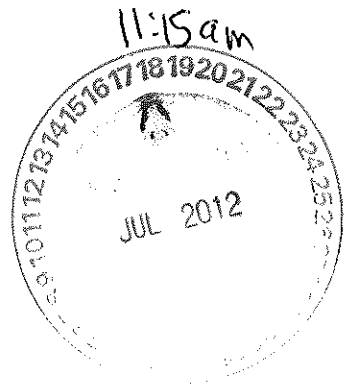
PLEASE PRINT!

PROJECT ADDRESS: 201 S. MILLS (TENTATIVE) 113

ALDERMANIC DISTRICT: 13

OWNER/DEVELOPER (Partners and/or Principals)	ARCHITECT/DESIGNER/OR AGENT:
<u>MERITER HOSPITAL, INC.</u>	<u>PLUNKETT RAYSICH ARCHITECTS</u>
<u>202 S. PARK</u>	<u>2310 CROSSROADS DR. #2000</u>
<u>MADISON, WI 53715-1956</u>	<u>MADISON, WI 53718</u>

CONTACT PERSON: KIRK KELLER, AIA, NCARB
 Address: 2310 CROSSROADS DR. #2000
MADISON, WI 53718
 Phone: 608.240.9900 X353
 Fax: _____
 E-mail address: kkeller@pranch.com



- TYPE OF PROJECT:
(See Section A for:)
- Planned Unit Development (PUD)
 - General Development Plan (GDP)
 - Specific Implementation Plan (SIP)
 - Planned Community Development (PCD)
 - General Development Plan (GDP)
 - Specific Implementation Plan (SIP)
 - Planned Residential Development (PRD)
 - New Construction or Exterior Remodeling in an Urban Design District * (A public hearing is required as well as a fee)
 - School, Public Building or Space (Fee may be required)
 - New Construction or Addition to or Remodeling of a Retail, Hotel or Motel Building Exceeding 40,000 Sq. Ft.
 - Planned Commercial Site

(See Section B for:)
 New Construction or Exterior Remodeling in C4 District (Fee required)

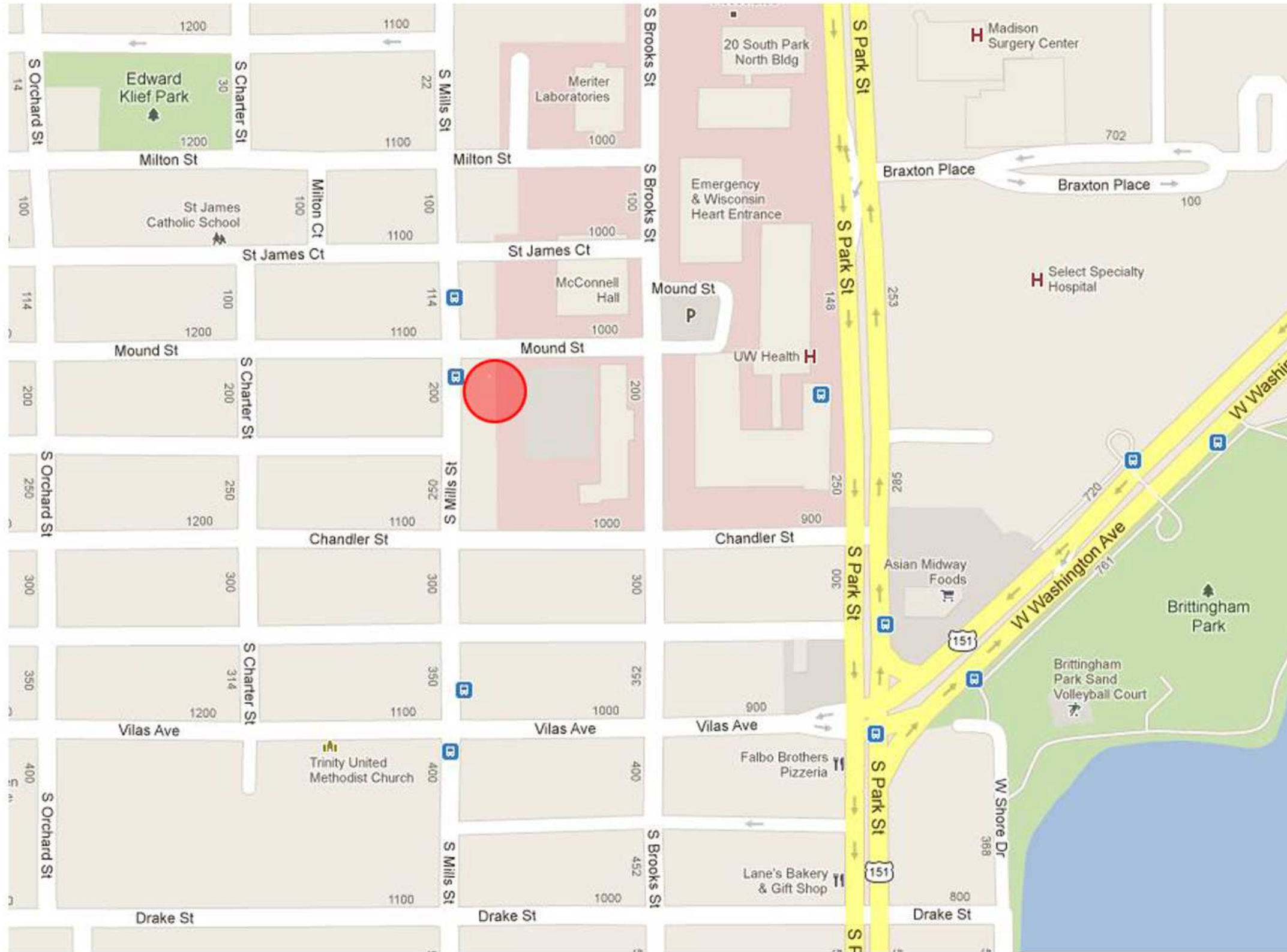
(See Section C for:)
 R.P.S.M. Parking Variance (Fee required)

(See Section D for:)

- Comprehensive Design Review* (Fee required)
- Street Graphics Variance* (Fee required)
- Other _____

*Public Hearing Required (Submission Deadline 3 Weeks in Advance of Meeting Date)


Where fees are required (as noted above) they apply with the first submittal for either initial or final approval of a project.



DRAWING LIST

- 000 - LOCATION MAP
- LETTER OF INTENT
- C001 SURVEY PLAN
- C100 SITE PLAN
- C101 GRADING PLAN
- C102 UTILITY PLAN
- C103 SITE DETAILS
- L100 LANDSCAPE SITE PLAN
- L101 LANDSCAPE PLAN
- L102 LANDSCAPE DETAILS
- A200 - FLOOR PLANS
- A400 - ELEVATIONS
- A401 - ELEVATIONS
- NORTHEAST VIEW
- NORTHWEST VIEW
- SOUTHWEST VIEW
- SITE PHOTOS
- LIGHTING PLAN
- MERITER SIGN STANDARDS

LOCATION MAP

 Plunkett Raysich Architects <small>LLP</small>	Plunkett Raysich Architects 11000 West Park Place Milwaukee, WI 53224 FAX 414 359-3070 TEL 414 359-3060 Email: pra@prarch.com Web: http://www.prarch.com	Meriter Hospital Child Care Facility South Mills Street Madison, WI	
		Date: 7.11.12	Job Number: 110358
		Drawn By: Author	Sheet Number: 000

17 July 2012

Urban Design Commission
City of Madison
Madison Municipal Building
215 Martin Luther King, Jr. Blvd.
Madison, WI 53703

cc: Gerard Rabas, Deborah Scherer - Meriter Hospital

Re: Meriter Child Care Facility
PRA Project 110358

Urban Design Commission Members,

At this time Meriter Hospital is planning on relocating its existing child care facilities into one new facility. These existing facilities are currently located on the Meriter campus in the Longfellow School building and in a residential building located on Chandler Street. The project intent is to have the new replacement child care facility ready for use in the early summer of 2013.

As a part of the existing approved Meriter Hospital General Development Plan (GDP) the purpose of this proposal is to develop a new building along S. Mills Street at the western edge of the Hospital campus that is in compliance with this agreement. The GDP references this area of the Hospital property as intended for buildings in a relative scale with the surrounding area. To support this areas design intent as a 'transition zone' to the surrounding Greenbush neighborhood a new two story wood frame style building clad with cement board, stone, synthetic stucco, and wood accents is proposed as the new Meriter Child Care Building.

In 2011 this day care project completed the entitlement process with the City on an adjacent site. As a part of this application it is Meriter Hospital, Inc's. intent to not move forward with this previous option. After careful review it was determined that this day care building was a better design and cross usage fit with this adjacent new site. These new site advantages include:

- All parent drop off and pick up parking can take place on an existing parking lot at times when there is little utilization of the area as the Hospital's valet parking lot
- The large existing Longfellow playground will continue to be used as the older children's activity area
- The day care facility on this site better fits the scale of the existing neighborhood with the shorter gabled roof end of the building facing S. Mills Street

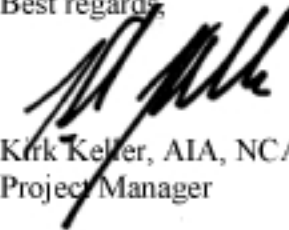
Two existing rental properties are being vacated and are intended for demolition. One new building is proposed to replace these aged structures. The new facility is designed to meet the specific needs of a child care use in an urban environment with the infant and toddler programs located on the first level and children to pre-school age located on the second level. This design supports the overall intent of Meriter Hospital to provide a new modern facility that appropriately meets the needs of the children and their Meriter staff parents.

The public project activities that have taken place in advance of this submittal include:

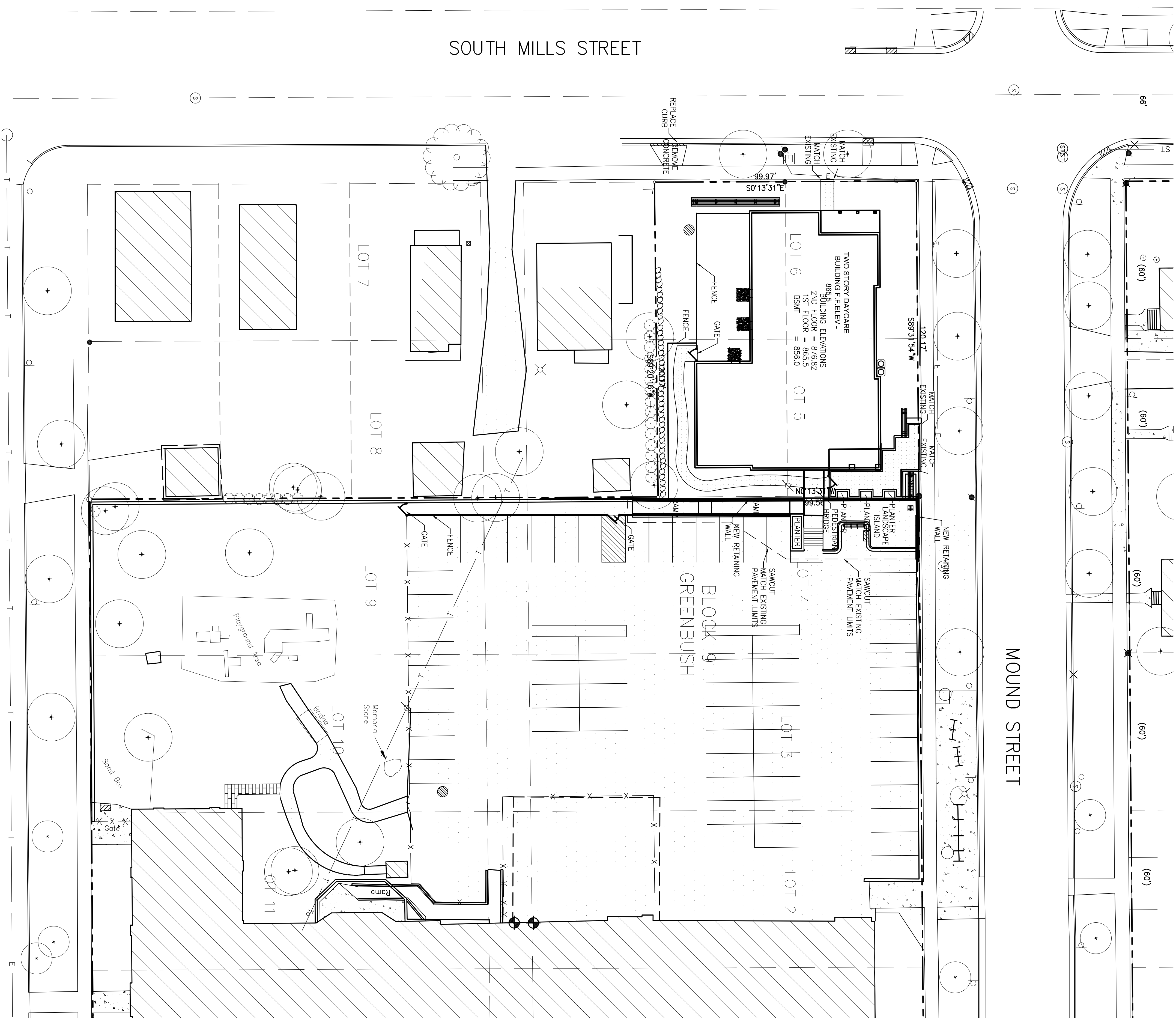
- Notice of intent for demolition was filed electronically for the buildings located at 201 and 203 S. Mills Street
- An initial informational meeting was held with the Alder Representative. This meeting dealt with the scope and intent of the project
- The Alder and the Greenbush Neighborhood Association have waived the 60 day review period for demolition
- With Staff support, the Landmarks Commission has recommended approval to the UDC for locating this project adjacent to the Longfellow School property
- The full submittal to the Plan Commission has been made
- Urban Design Commission final approval with any recommendations is requested by this application

With the positive support received during these initial project design steps, Meriter Hospital, Inc. is requesting final approval from the Urban Design Commission. We look forward to moving forward through the City review and approvals process and the completion of a wonderful new facility for the children of Meriter employees.

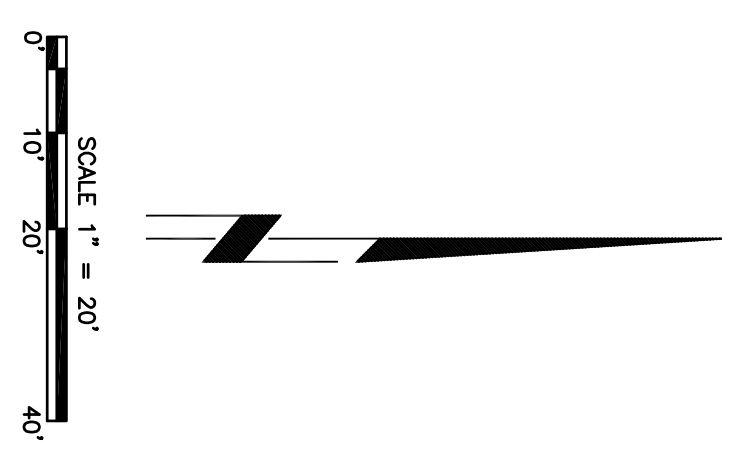
Best regards,



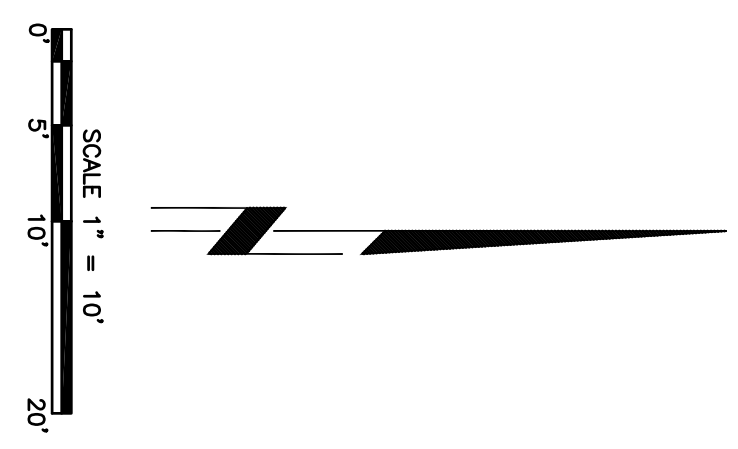
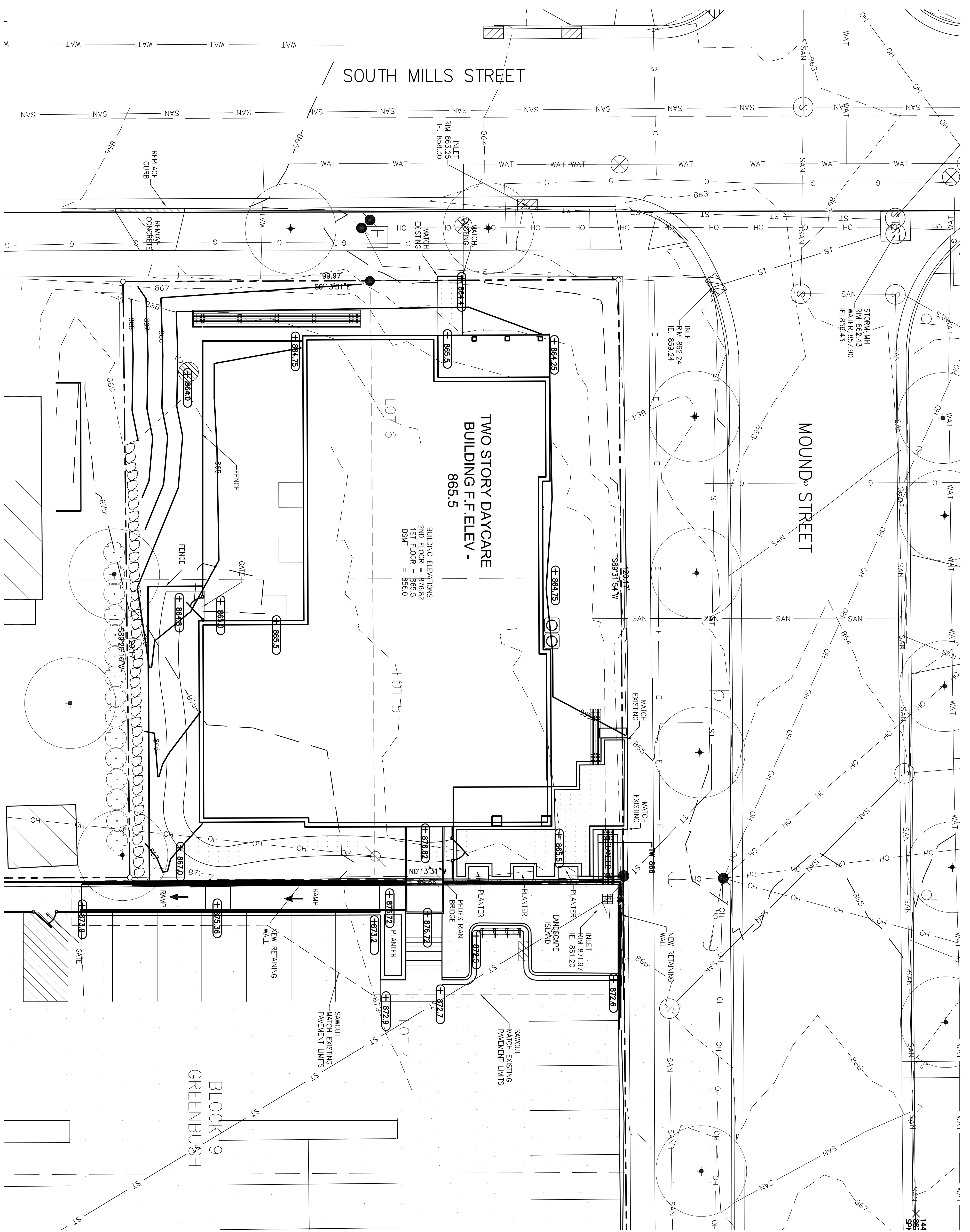
Kirk Keller, AIA, NCARB
Project Manager



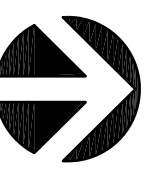
LEGEND	
	SECTION CORNER FOUND
	IRON STAKE FOUND
	REPAIR PLACED
	CHAINED CROSS
	DRILL HOLE
	SURVEY NAIL
	(66356) RECORDED AS DATA
	(66357) MEASURED AS DATA
	SANITARY MANHOLE
	YARD CLEANOUT
	STORM MANHOLE
	STORM INLET
	STORM CATCH BASIN
	STORM CLEAN OUT
	WATER MANHOLE
	HYDRANT
	WATER VALVE
	GAS METER
	GAS VALVE
	TRAFFIC CONTROL BOX
	LIGHT POLE
	ELECTRICAL OUTLET
	UTILITY POLE
	GUY WIRE / DEAD MAN
	TRAFFIC SIGNAL
	TRAFFIC CONTROL BOX
	ELECTRIC PEDESTAL
	ELECTRIC METER
	ELECTRIC MANHOLE
	TELEPHONE PEDESTAL
	TELEPHONE MANHOLE
	CABLE PEDESTAL
	BALLAST
	HANDICAP RAMP
	EDGE OF TREES
	EXISTING BUILDING
	EXISTING CONCRETE
	EXISTING GRAVEL
	EXISTING ASPHALT
	CANOPY/SHADE TREE
	SHRUB
	BURIED WATER MAIN
	SANITARY SEWER
	STORM SEWER
	BURIED CABLE TV LINE
	BURIED ELECTRIC
	BURIED TELEPHONE
	BURIED GAS MAIN
	CONDUIT
	SPOT ELEVATION
	BENCH MARK
	PROPERTY LINE
	UTILITY EASEMENT
	SETBACK LINE

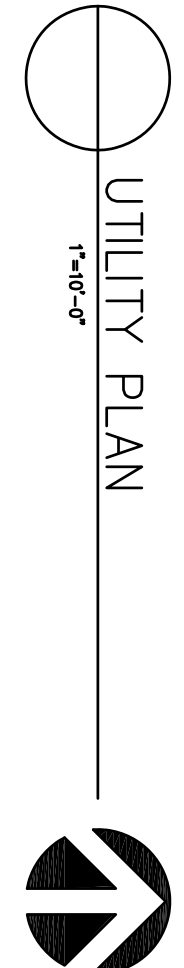
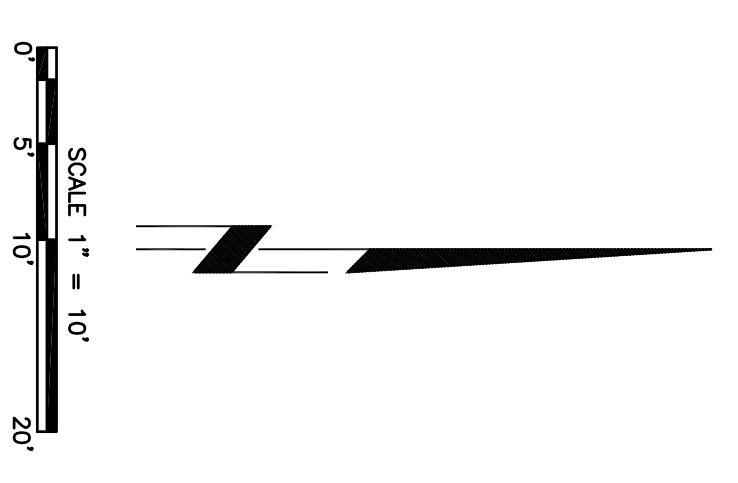
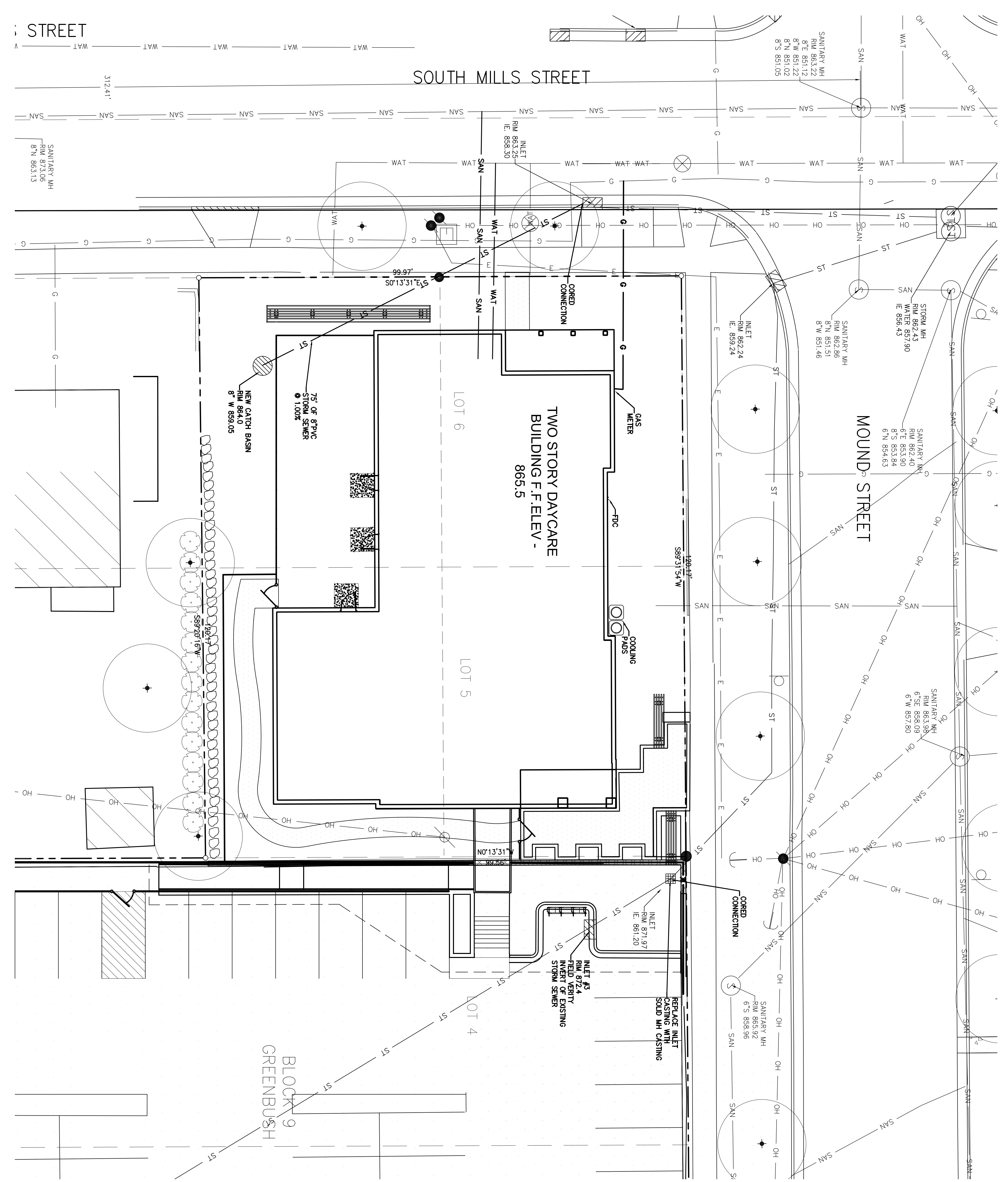


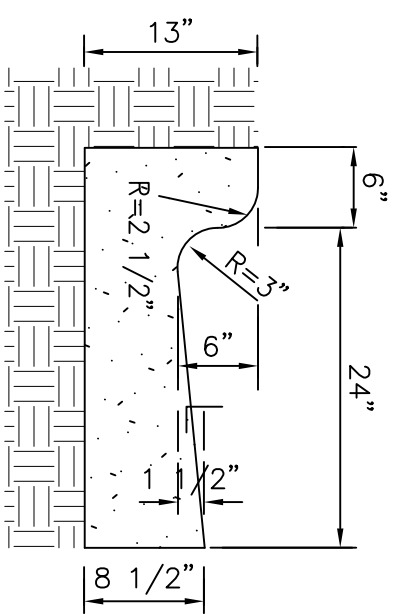
SITE PLAN
1"=20'-0"



GRADING PLAN
1"=10'-0"





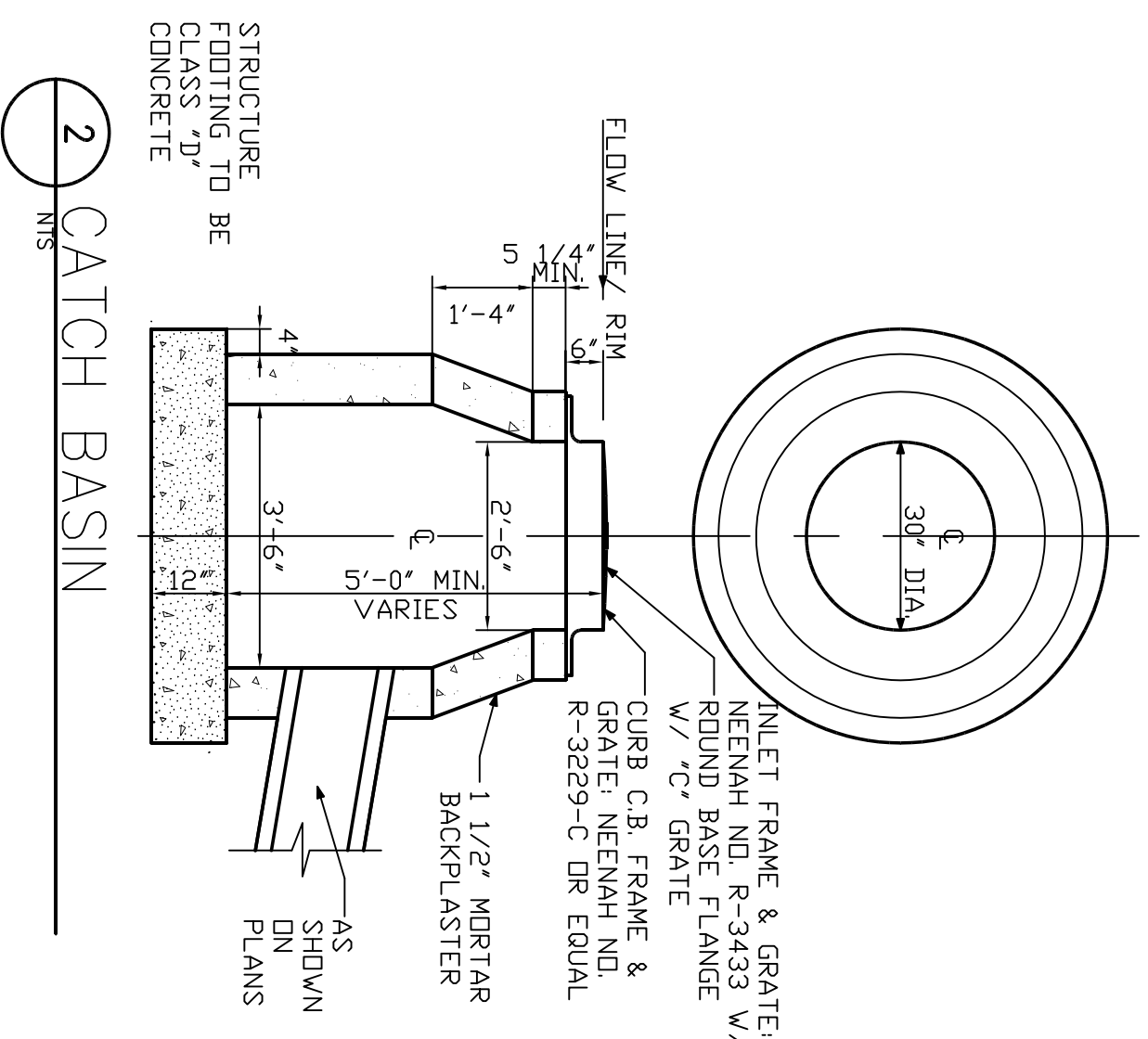


GENERAL NOTES:
 LATERAL CONTRACTION JOINTS SHALL BE PLACED AT INTERVALS OF NOT MORE THAN 15' NOR LESS THAN 6' IN LENGTH. THE JOINTS SHALL BE A MINIMUM OF 3" IN DEPTH.

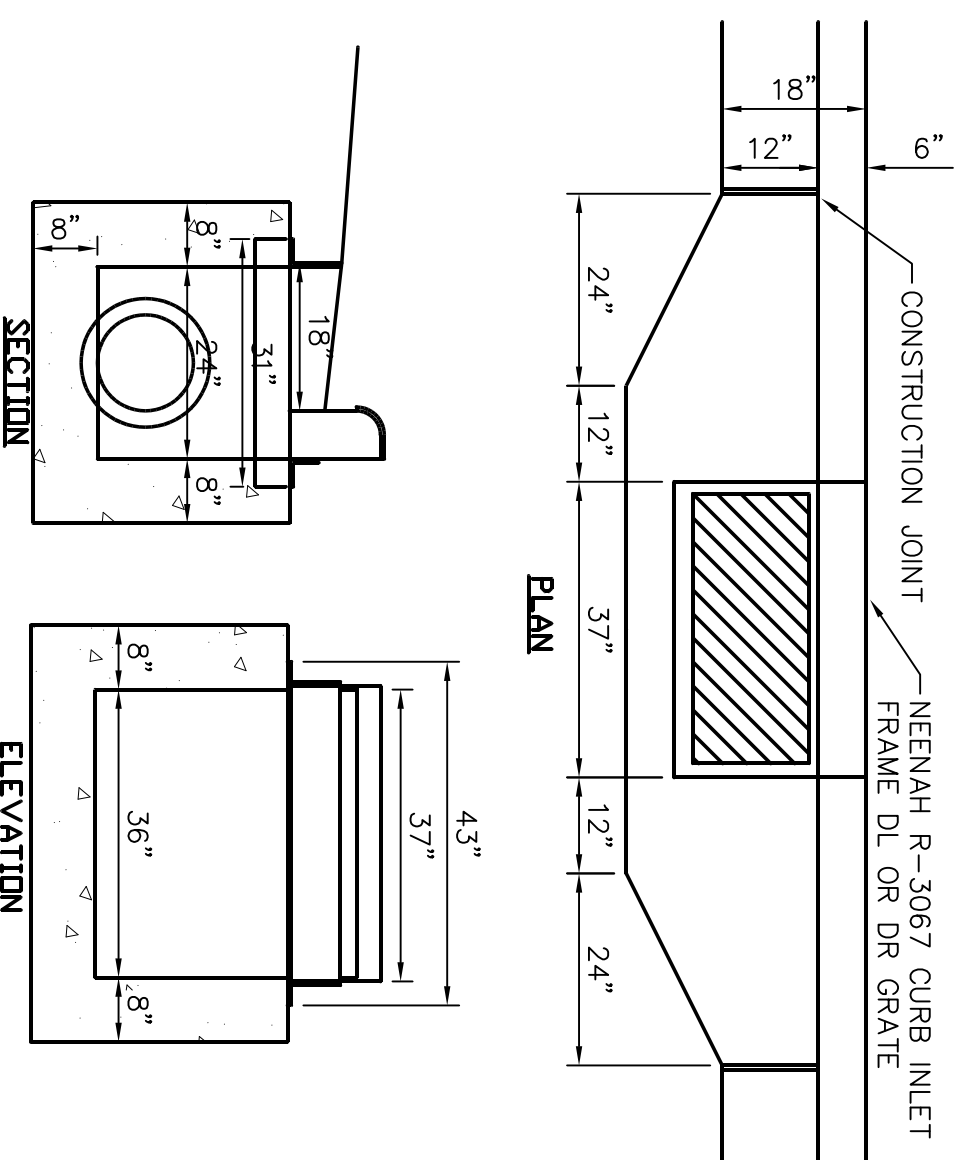
EXPANSION JOINTS SHALL BE PLACED TRANSVERSELY AT RADIUS POINTS ON CURVES OF RADIUS OF 200' OR LESS, AND AT ANGLE POINTS, OR AS DIRECTED BY THE ENGINEER. THE EXPANSION JOINT SHALL BE A ONE PIECE ASPHALTIC MATERIAL HAVING THE SAME DIMENSIONS AS CURB & GUTTER AT THAT STATION AND BE 1/2" THICK.

IN ALL CASES, CONCRETE CURB & GUTTER SHALL BE PLACED ON THOROUGHLY COMPACTED CRUSHED STONE.

1 30" STD. CURB

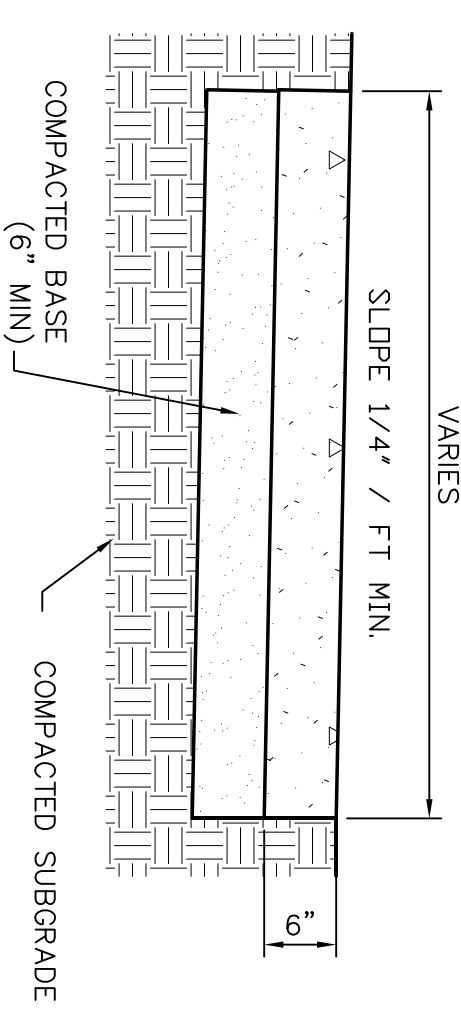


2 CATCH BASIN

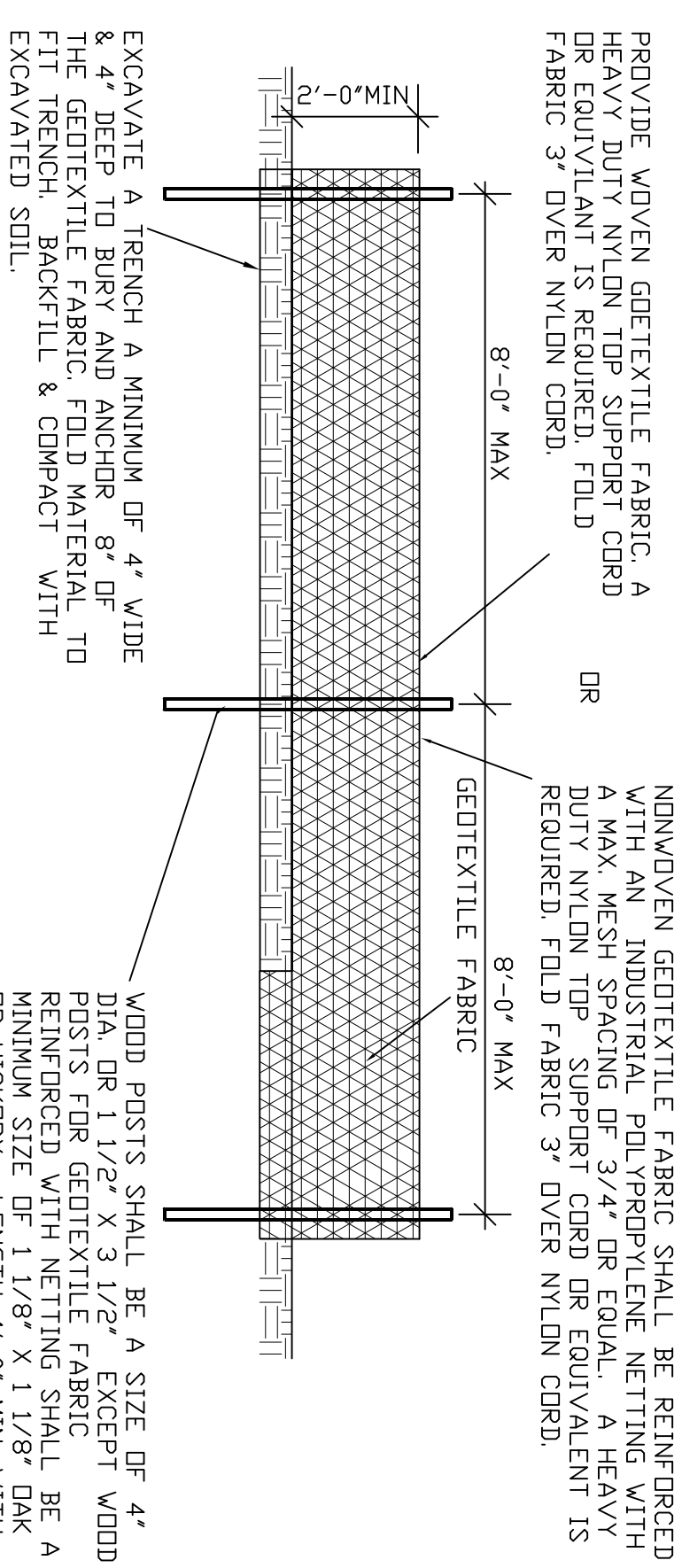


NOTES:
 1. PRECAST REINFORCED CONCRETE STRUCTURES MAY BE USED IF APPROVED IN ACCORDANCE WITH CONSTRUCTION SPECIFICATIONS.
 2. SHOULDER DETAILS TO BE BUILT OVER TOP OF CONCRETE PIPE WITH OPENING CUT INTO PIPE.

5 CURB INLET

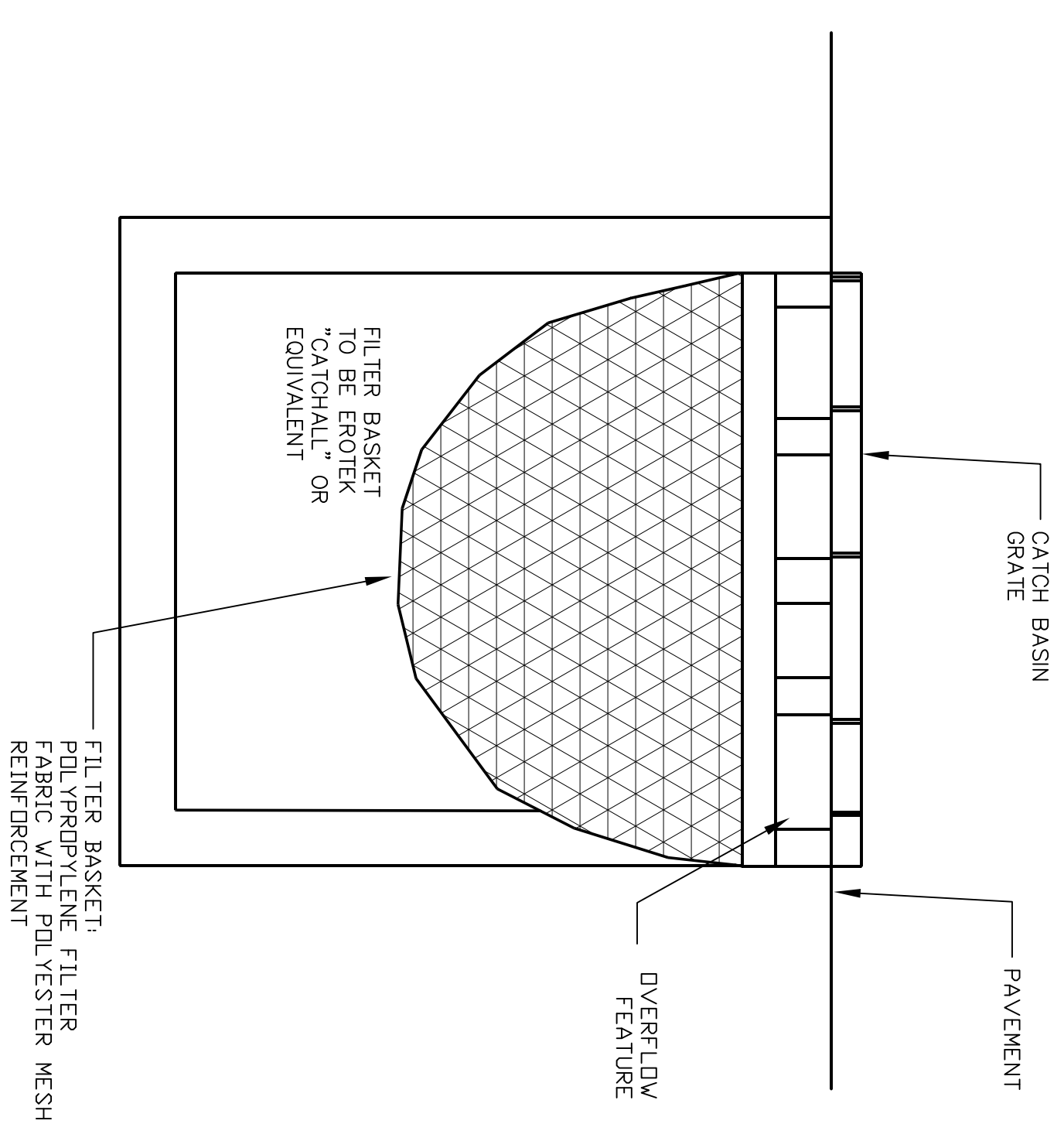


4 CONCRETE SIDEWALK

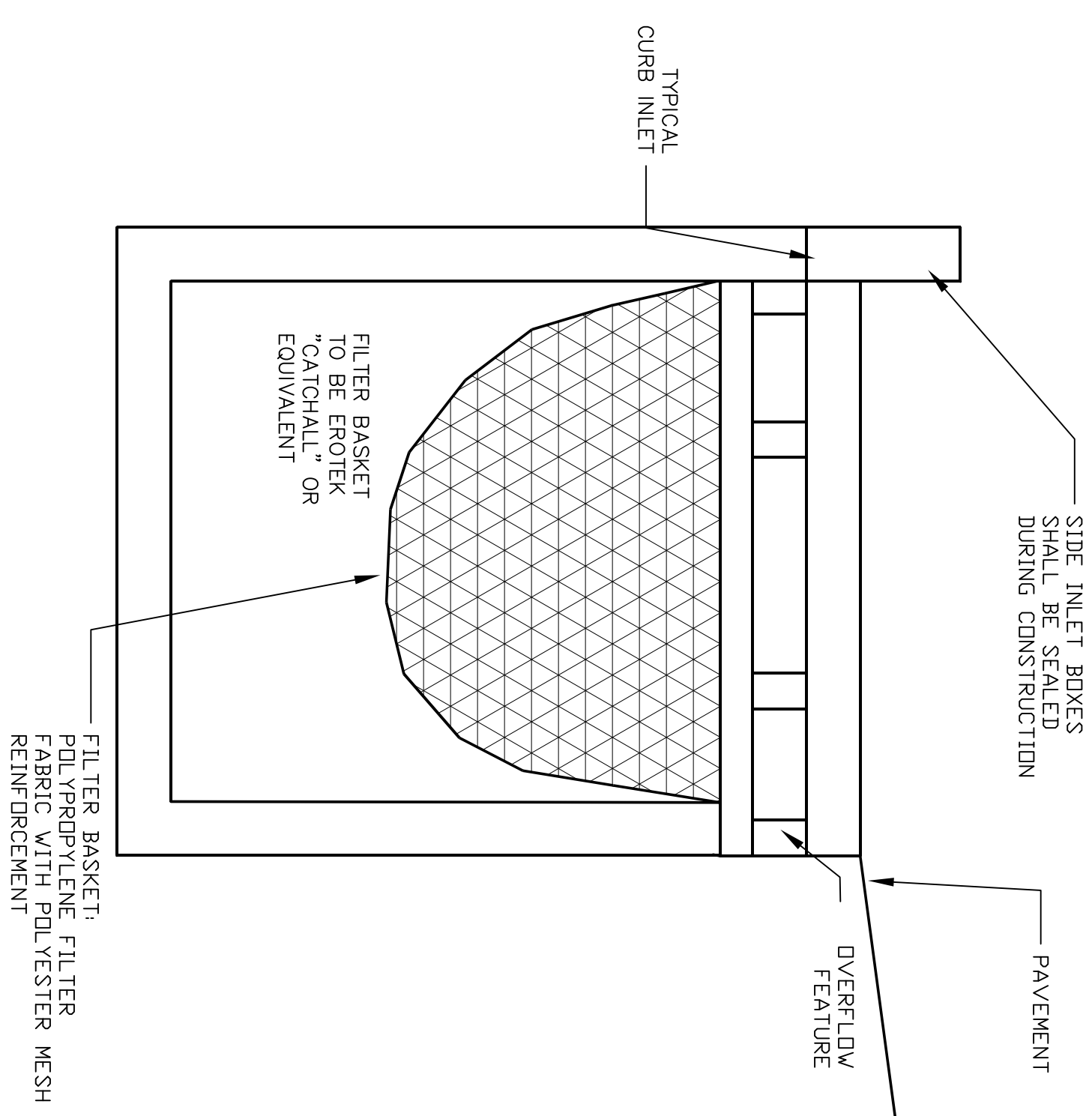


5 SILT FENCE

NOTE: REFERENCE "M, CONSTRUCTION SITE BEST MANAGEMENT PRACTICE HANDBOOK-SECTION B.1."

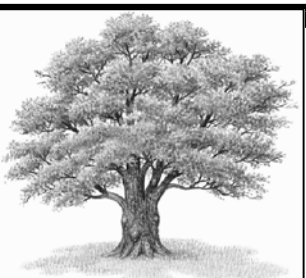


6 CATCH BASIN SEDIMENT PROTECTION WITHIN PAVED AREAS



7 CURB INLET SEDIMENT PROTECTION

DETAILS



Royal Oak & Associates, Inc
 3678 Kinsman Boulevard
 Madison, WI 53704
 Phone (608) 274-0500 Fax (608) 274-4530
 www.royaloakengineering.com

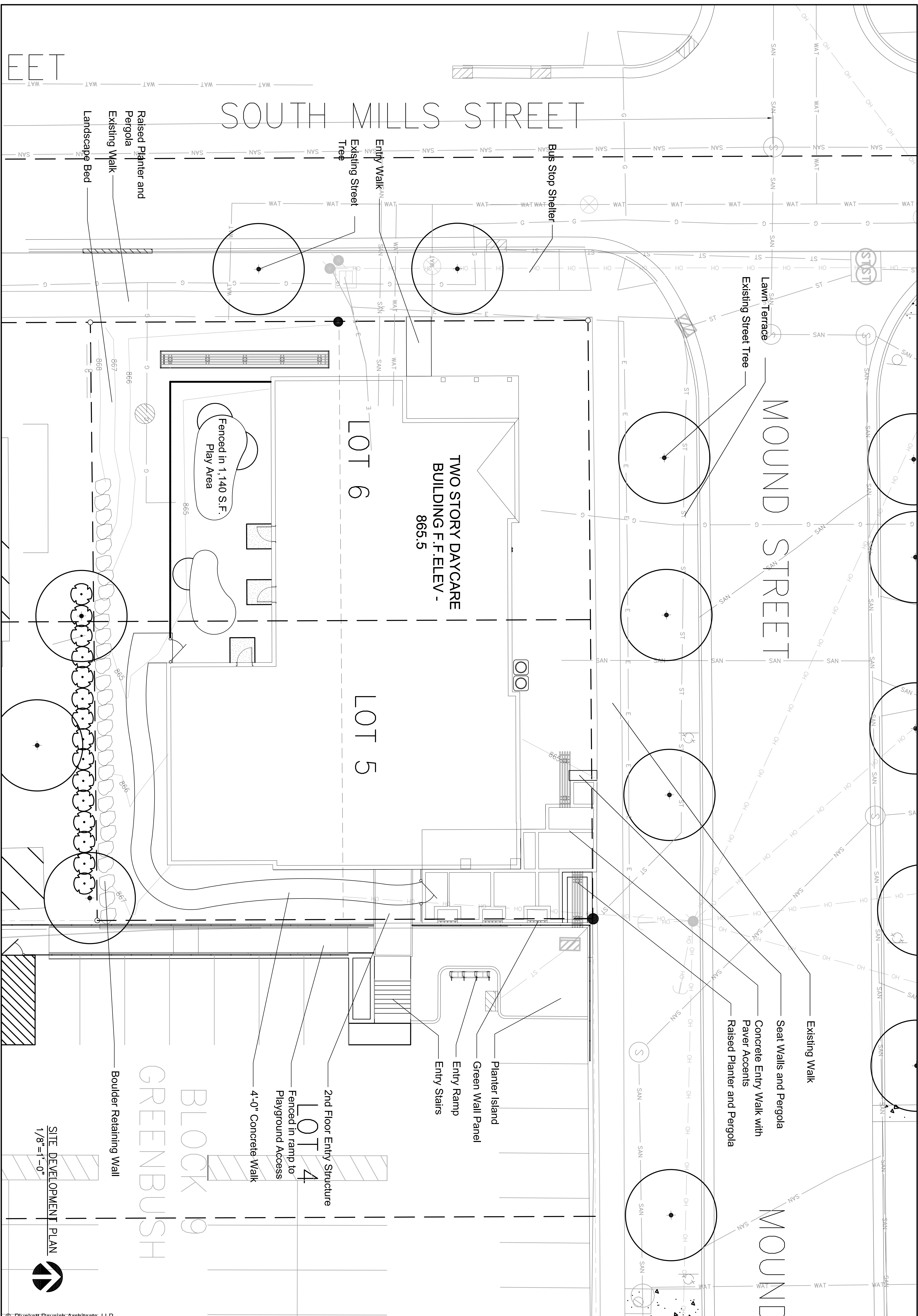
Meriter Hospital - Child Care Facility
 201 Mount Street
 Madison, WI

Drawn By: FRT

Date: 7.11.12

Job No.: 110358

Sheet No.: C103



SOUTH MILLS STREET

MOUND STREET

MOUND

TWO STORY DAYCARE
BUILDING F.F.ELEV. -
865.5

LOT 6

LOT 5

LOT 4

Fenced in 1,140 S.F.
Play Area

Raised Planter and
Pergola
Existing Walk
Landscape Bed

Existing Walk
Seat Walls and Pergola
Concrete Entry Walk with
Paver Accents
Raised Planter and Pergola

Planter Island
Green Wall Panel
Entry Ramp
Entry Stairs

2nd Floor Entry Structure
Fenced in ramp to
Playground Access
4'-0" Concrete Walk

Boulder Retaining Wall

BLOCK 9
GREENBUSH

FEET

SITE DEVELOPMENT PLAN
1/8" = 1'-0"



© Plunkett Raysich Architects, LLP

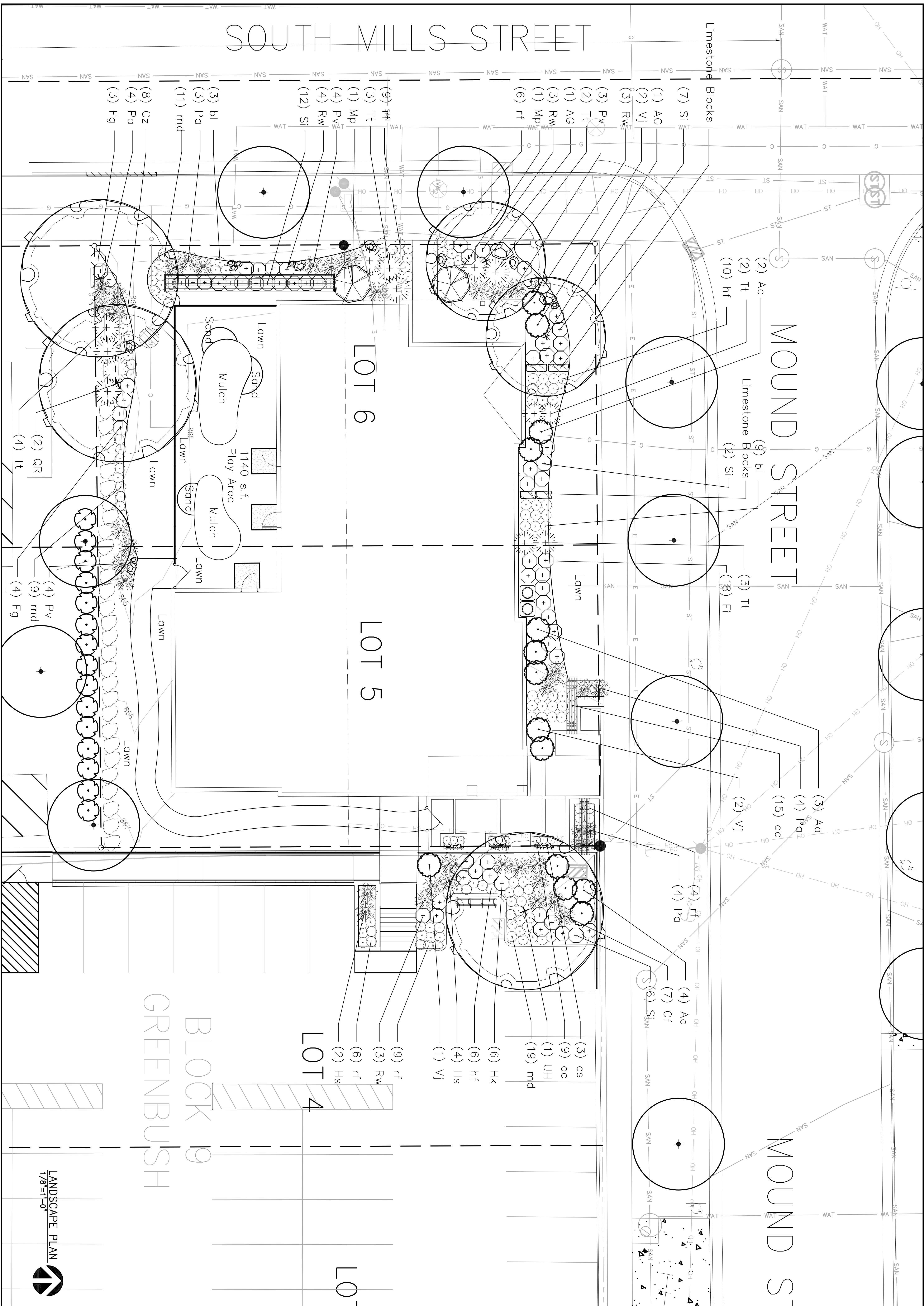
Drawn By: **GP**
Date: **7.11.12**
Job No.: **11_MER_02**
Sheet No.: **L100**

Meriter Hospital - Child Care Facility
South Mills Street
Madison, WI

11000 West Park Place • Milwaukee WI 53224 • Tel 414 359-3060 Fax 414 359-3070
Plunkett Raysich Architects
Intelligent Designs Inspired Results
www.p.r.a.r.c.h.com

etc. design studio
330 W. Lakeside Street
Madison, WI 53715
gqperry@gmail.com
P 608.358.6344

SOUTH MILLS STREET

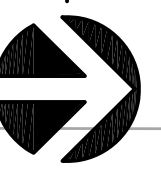


MOUND STREET

MOUND S

BLOCK 9 GREENBUSH

LANDSCAPE PLAN
1/8"=1'-0"



© Plunkett Raysich Architects, LLP

Meriter Hospital - Child Care Facility
 South Mills Street
 Madison, WI

Drawn By: **GOP**
 Date: **7.11.12**
 Job No.: **11_MER_02**
 Sheet No.: **L101**

11000 West Park Place • Milwaukee WI 53224 • Tel 414 359-3060 Fax 414 359-3070

Plunkett Raysich Architects **Intelligent Designs** **Inspired Results**

www.p.r.a.r.c.h.i.t.e.c.t.s . c . o . m

etc studio 330 W. Lakeside Street
 Madison, WI 53715
 P 608.358.6344

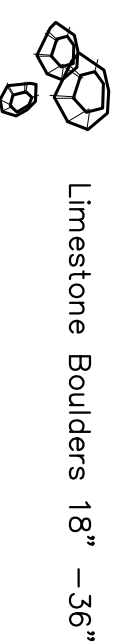
LANDSCAPE PLANT SCHEDULE

Symbol	Botanical Name	Common Name	Size	Root	Quantity
DECIDUOUS TREES					
AG	Amelechier x grandiflora Autumn Brilliance Serviceberry	Autumn Brilliance Serviceberry	1-3/4"	B&B	
QR	Quercus rubra	Red Oak	2.5'	B&B	
UH	Ulmus x 'New Horizon'	New Horizon Elm	2.5"	clump	

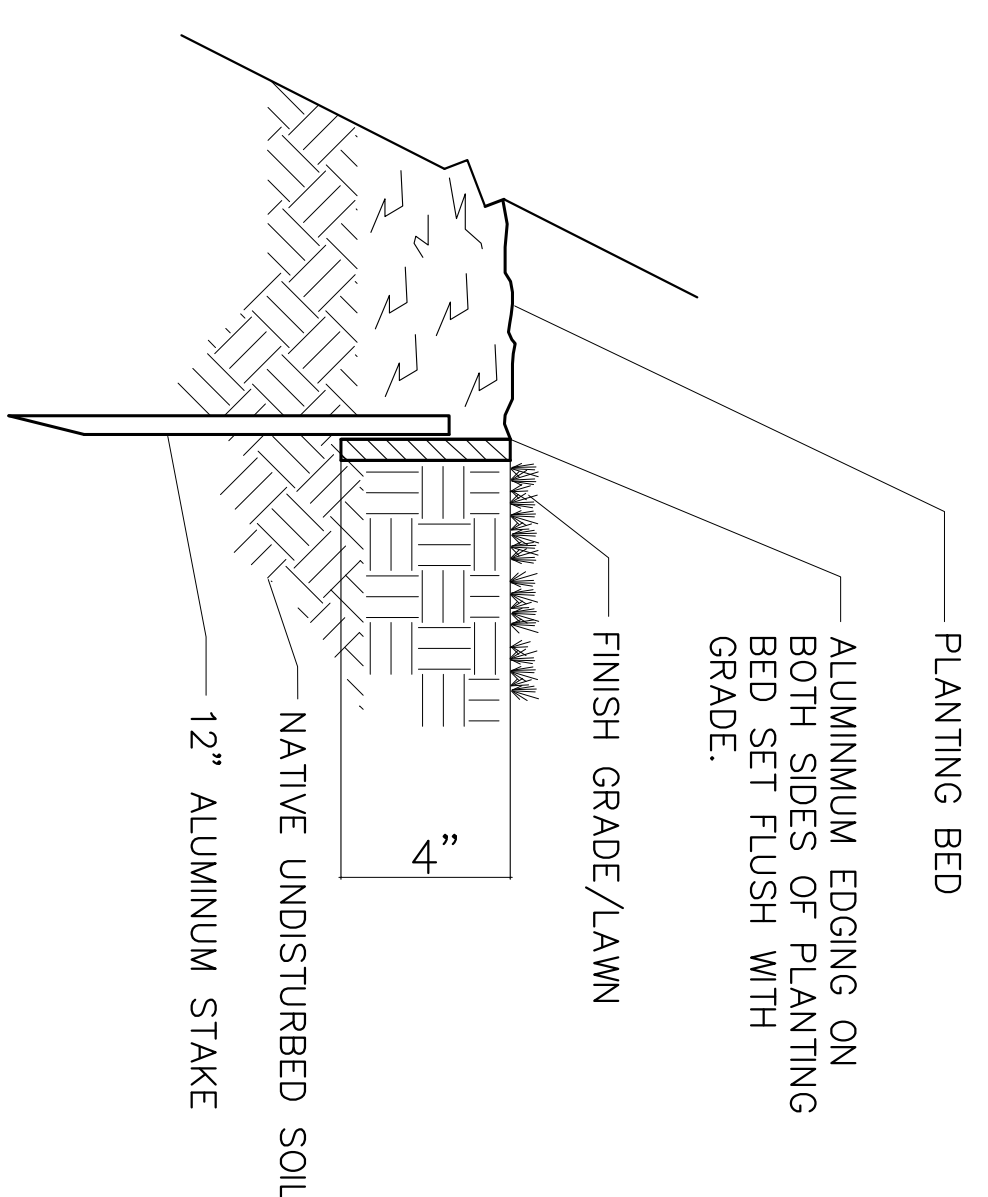
Symbol	Botanical Name	Common Name	Size	Root	Quantity
EVERGREEN TREES/SHRUBS					
Tt	Toxus x media 'Tautoni'	Tautoni Yew	18"-24"	B&B	

Symbol	Botanical Name	Common Name	Size	Root	Quantity
DECIDUOUS SHRUBS and GRASSES					
Aa	Aronia arbutifolia 'Brilliantissimo'	Brilliant Red Chokeberry	5 gal.	CG	
Fg	Fothergilla gardenii 'Mount Airy'	Mount Airy Fothergilla	5 gal.	CG	
Fi	Forsythia x intermedia 'Cortasol'	Gold Tide Forsythia		CG	
Hk	Hypericum kalmianum 'Ames'	Ames St. Johns Wort	3 gal.	CG	
Hs	Helectichon semperfrens	Blue Oat Grass	3 gal.	CG	
Mp	Myrica pennsylvanica	Northern Bayberry	5 gal.	CG	
Pa	Pennisetum alopecuroides Hameln	Dwarf Fountain Grass	3 gal.	CG	
Pv	Panicum virgatum 'Shenandoah'	Shenandoah Switch Grass	1 gal.	CG	
Rw	Rosa 'The Fairy'	The Fairy Rose	2 gal.	CG	
Sl	Stephanandra incisa 'Crispa'	Cut Leaf Stephanandra	2 gal.	CG	
Vj	Viburnum x juddii	Judd Viburnum	5 gal.	CG	

Symbol	Botanical Name	Common Name	Size	Root	Quantity
PERENNIALS					
ac	Astilbe chinensis 'Visions'	Astilbe Visions in Red	1 Gal.	CG	
bl	Phlox divaricata 'Clouds of Perfume'	Woodland Phlox	1 Gal.	CG	
cf	Calamagrostis x oculiflora 'Karl Foerster'	Karl Foerster Feather Reed Grass	1 Gal.	CG	
cv	Coreopsis verticillata 'Zagreb'	Threadleaf Coreopsis	4"	CG	
ht	Heuchera 'Frosted Violet'	Frosted Violet Heuchera	4"	CG	
md	Monarda didyma 'Marshall's Delight'	Marshall's Delight Beebalm	4"	CG	
rt	Rudbeckia fulgida var. sullivanti 'Goldsturm'	Goldsturm Black-Eyed Susan	4"	CG	
cs	Celastrus scandens	American Bittersweet	3 gal.	CG	



Limestone Boulders 18" - 36"



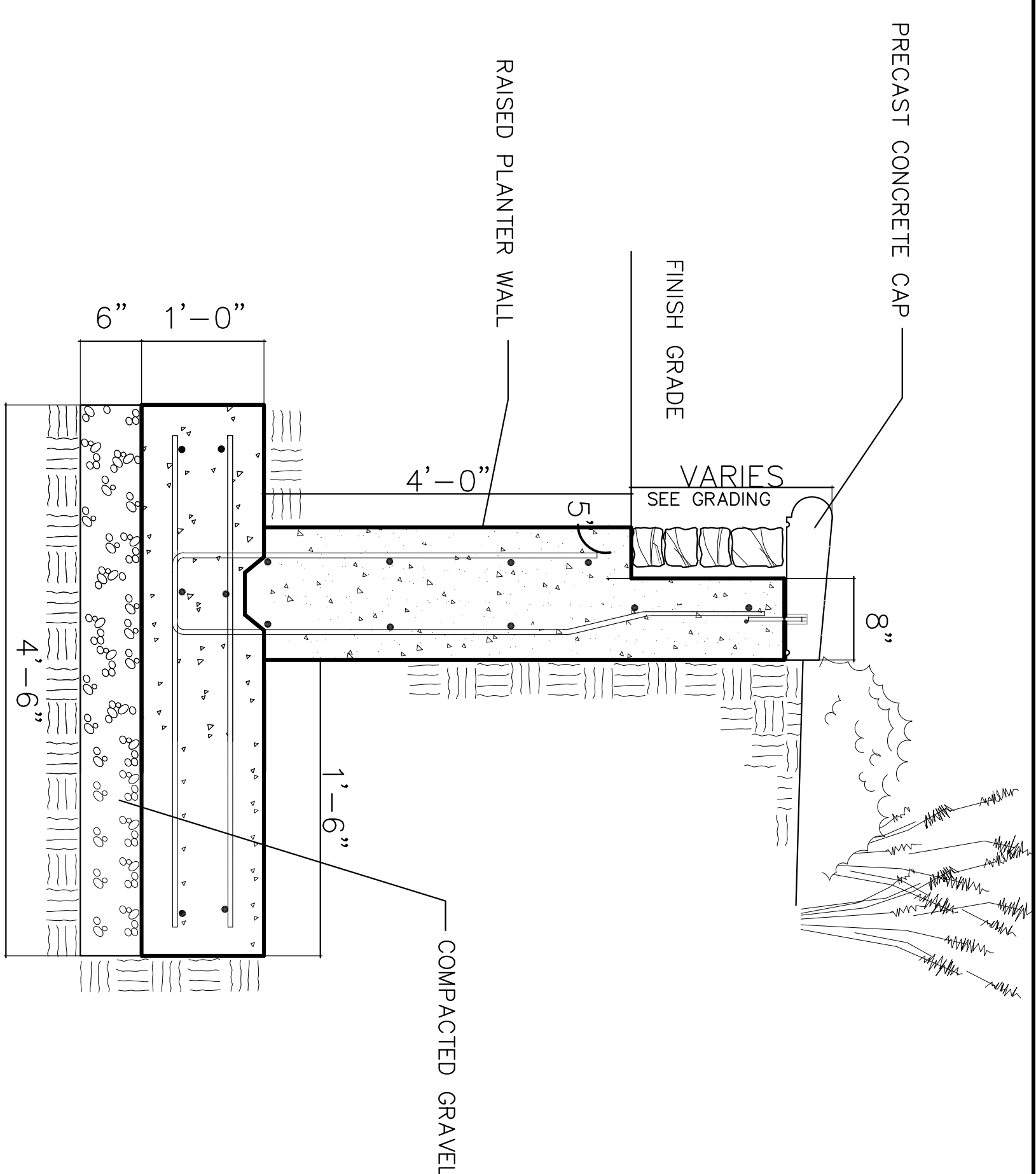
ALUMINUM EDGING ON BOTH SIDES OF PLANTING BED SET FLUSH WITH GRADE.

FINISH GRADE/LAWN

NATIVE UNDISTURBED SOIL

1 ALUMINUM EDGING

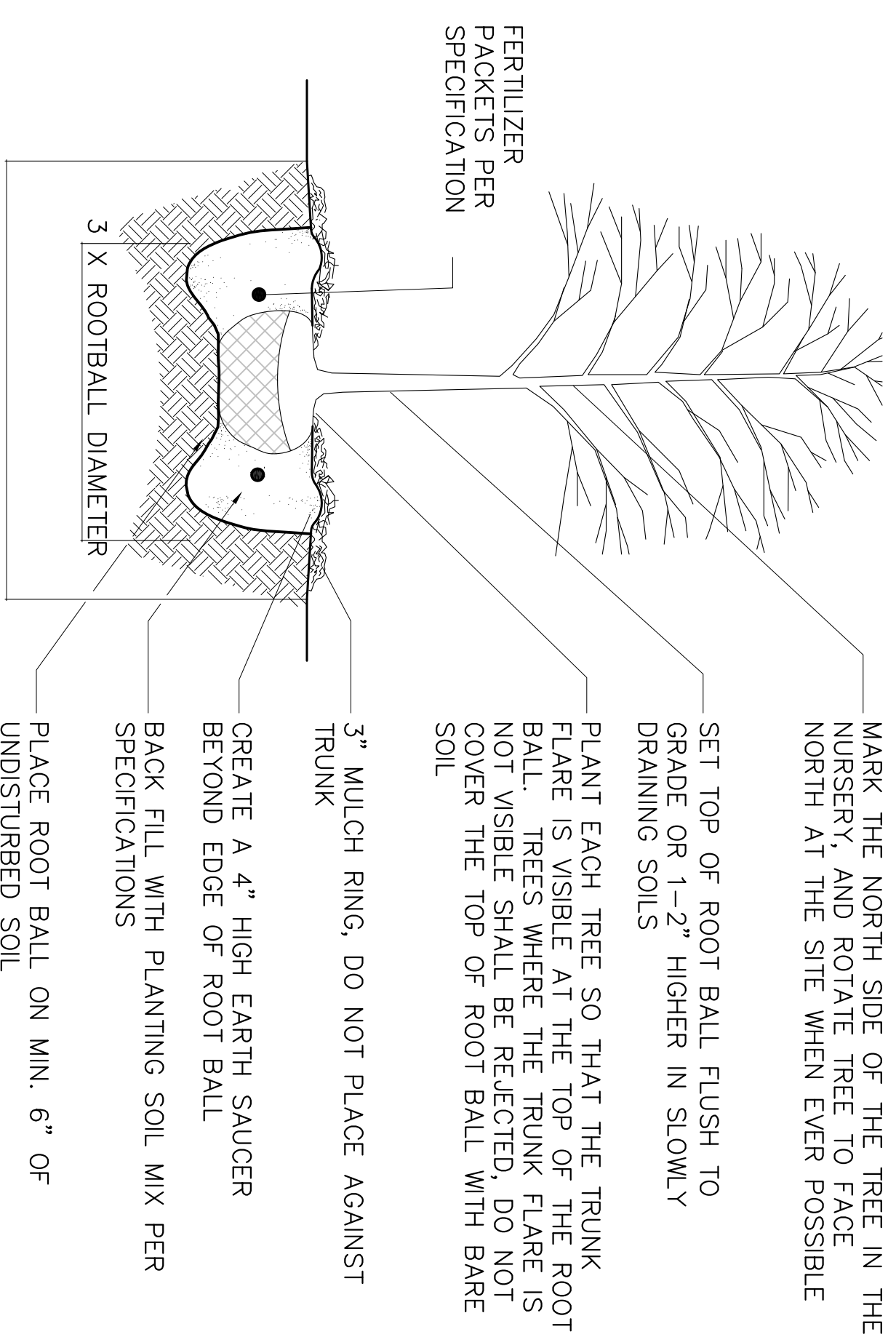
SCALE: NTS



NOTE: PROVIDE WALL TIES AS NEEDED.

2 RAISED PLANTER WALL

SCALE: NTS

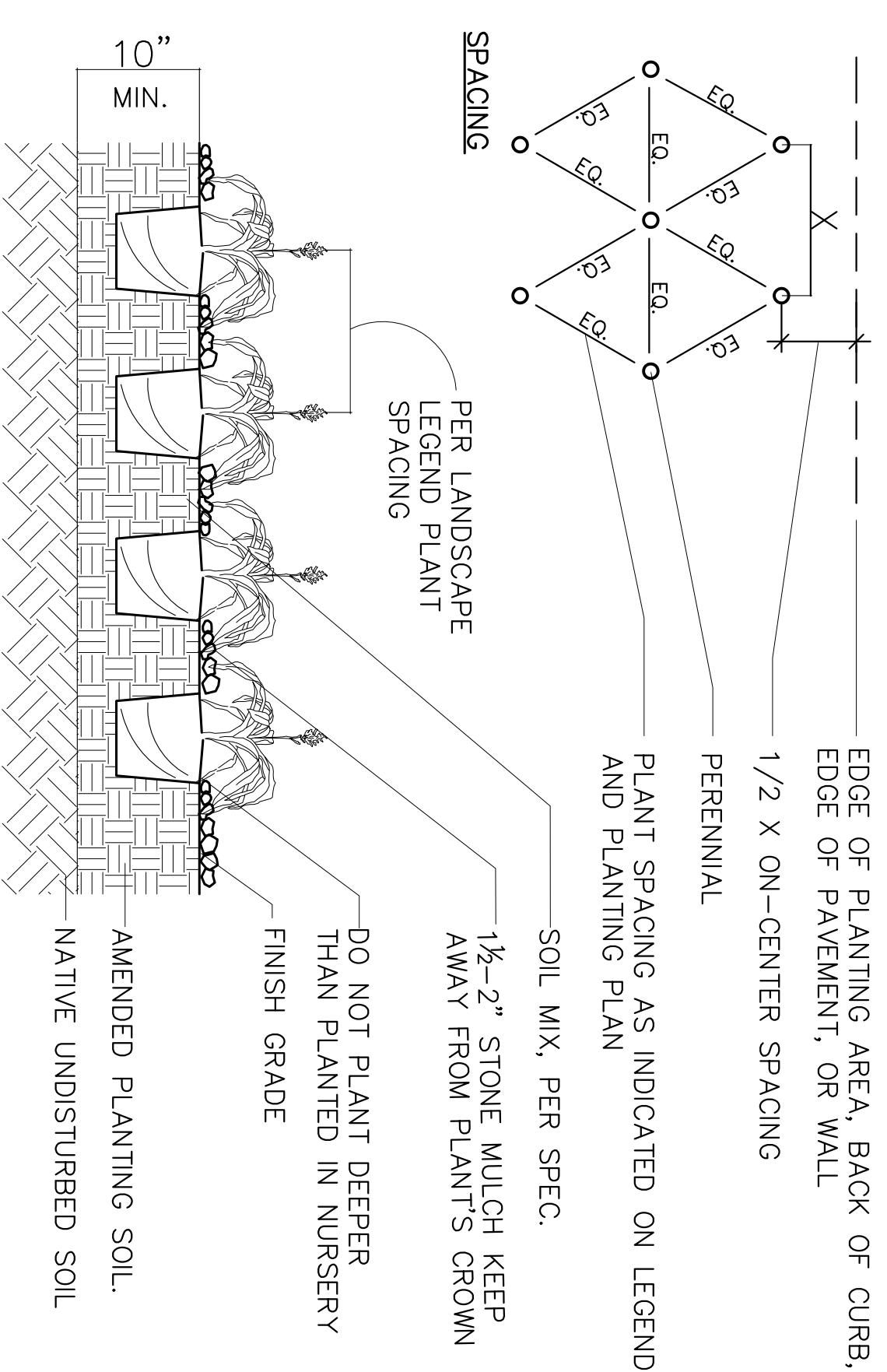


NOTES:

- DO NOT HEAVILY PRUNE THE TREE AT PLANTING. PRUNE ONLY CROSSOVER LIMBS, CO-DOMINANT LEADERS, AND BROKEN OR DEAD BRANCHES. SOME INTERIOR TWIGS AND LATERAL BRANCHES MAY BE PRUNED, HOWEVER, DO NOT REMOVE THE TERMINAL BUDS OF BRANCHES THAT EXTEND TO THE EDGE OF THE CROWN
- STAKE TREES ONLY UPON THE APPROVAL OF THE LANDSCAPE ARCHITECT--SEE STAKING DETAILS
- WRAP TREE TRUNKS ONLY UPON THE APPROVAL OF THE LANDSCAPE ARCHITECT--SEE WRAPPING DETAIL
- IF PLANT IS SHIPPED WITH A WIRE BASKET AROUND THE ROOT BALL, CUT THE WIRE BASKET IN FOUR PLACES AND FOLD DOWN 8" INTO THE PLANTING HOLE
- REMOVE ALL TWINE, ROPE/WIRE, AND BURLAP FROM TOP HALF OF ROOT BALL
- REFER TO SPECIFICATIONS FOR FURTHER INFORMATION

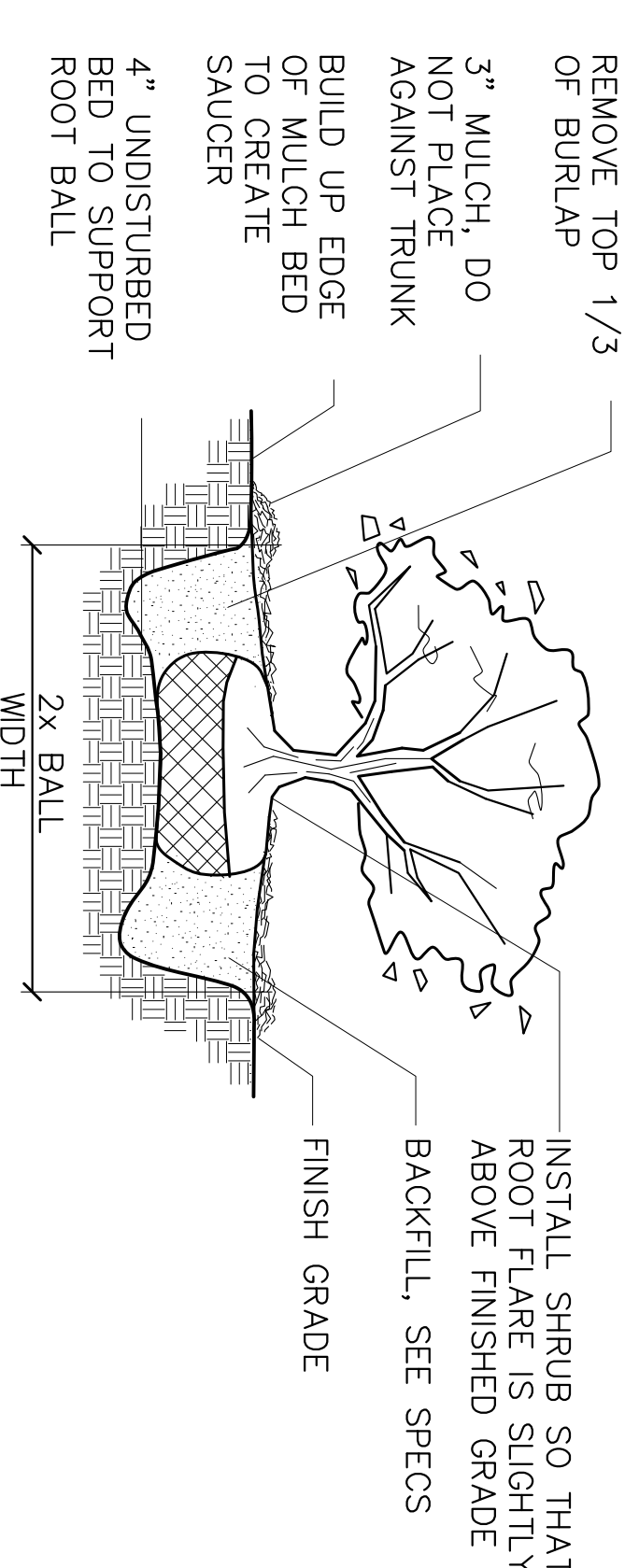
3 B&B TREE PLANTING DETAILS

SCALE: NTS



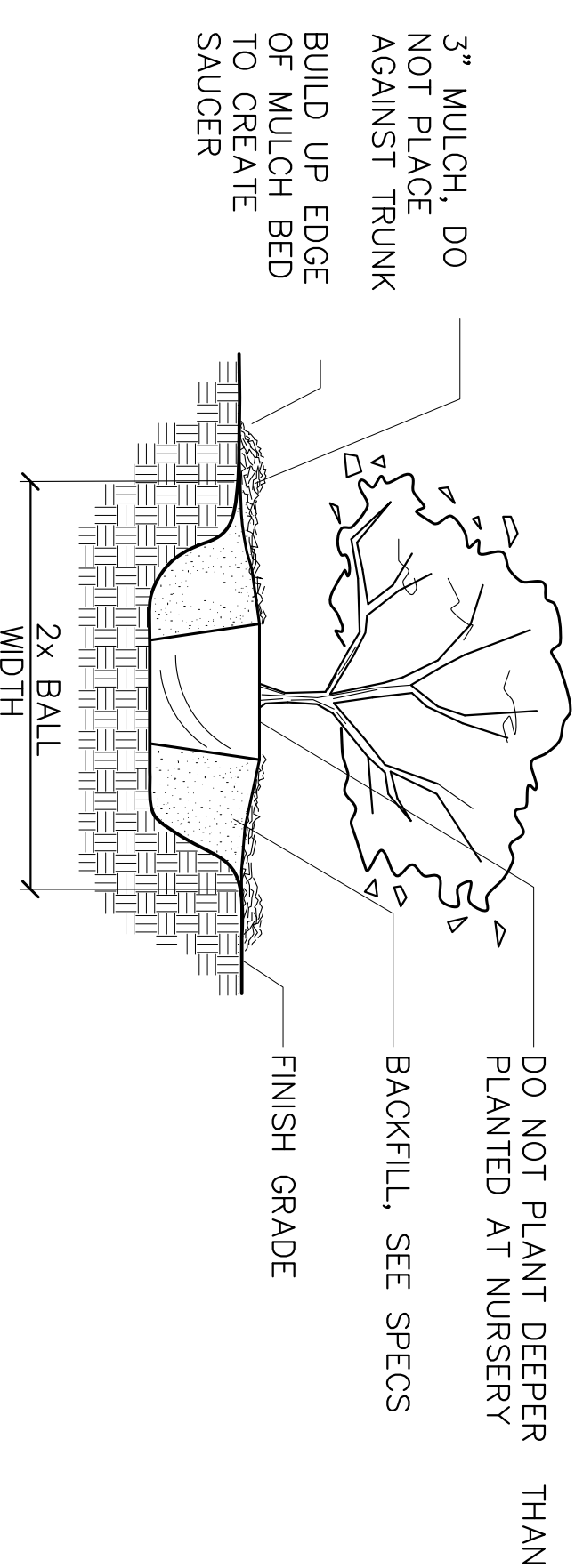
4 PERENNIAL PLANTING

SCALE: NTS



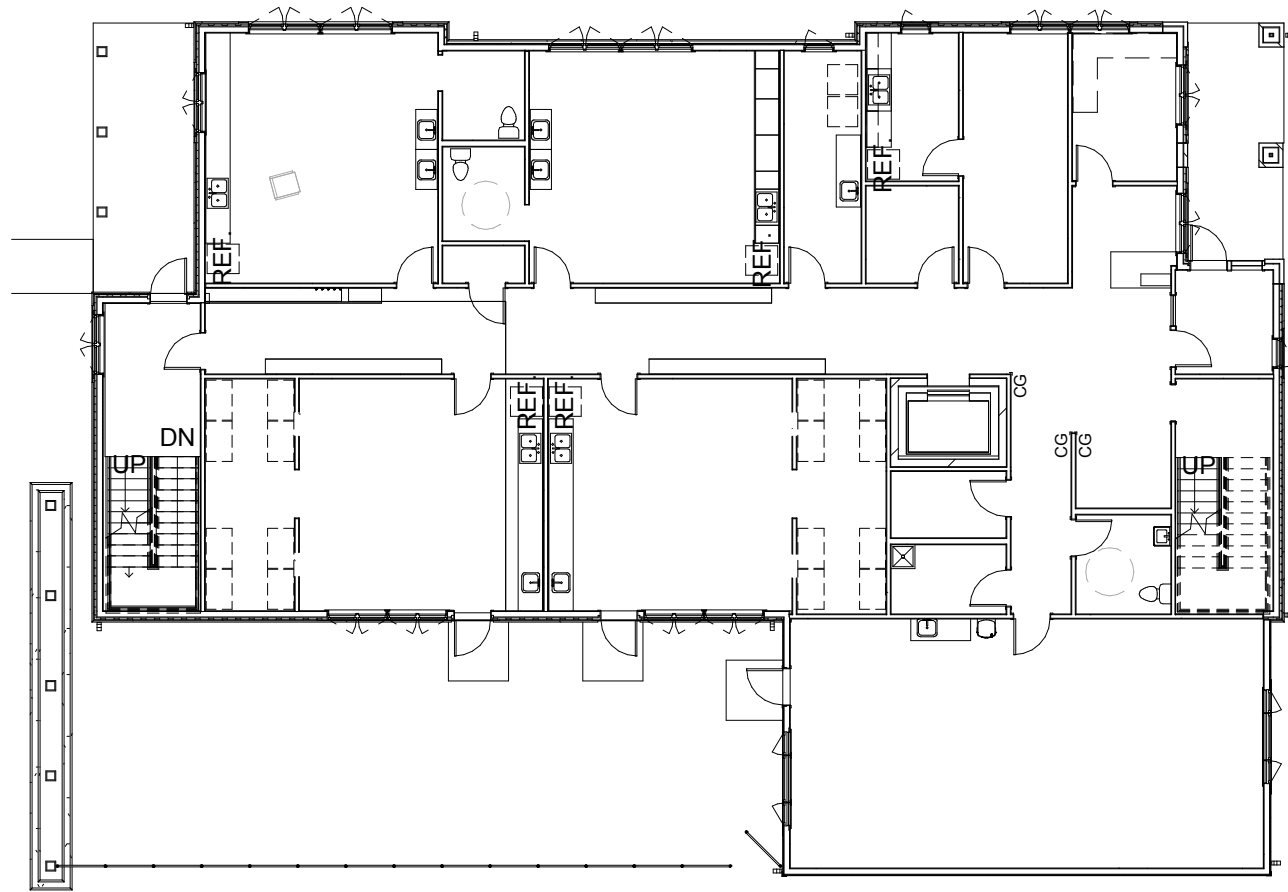
5 B&B SHRUB PLANTING

SCALE: NTS

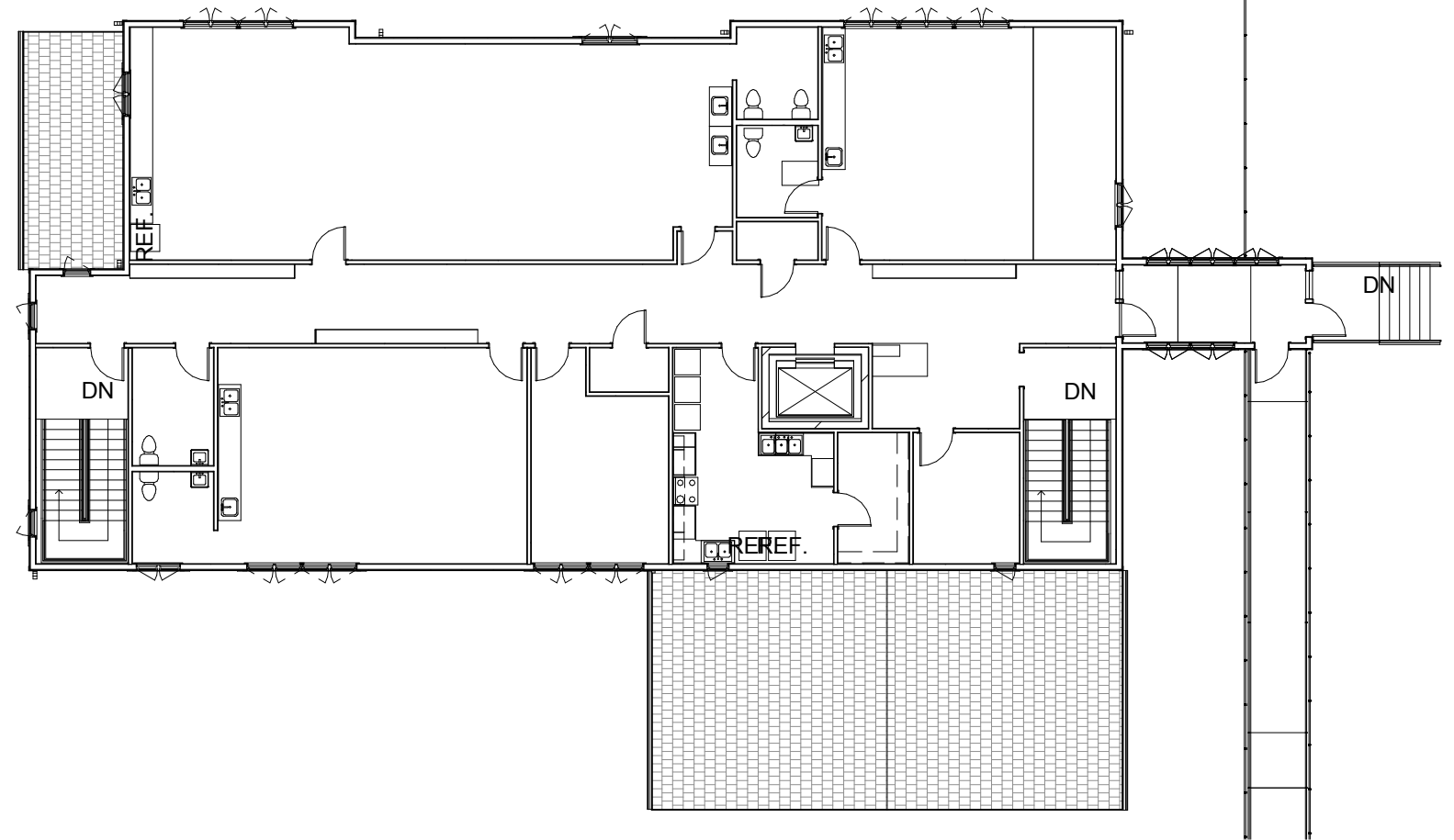


6 CONTAINER SHRUB PLANTING

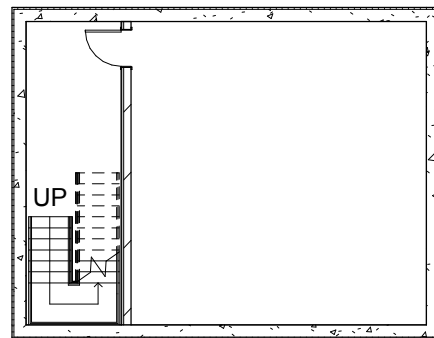
SCALE: NTS




1 FIRST FLOOR
A200 1/16" = 1'-0"



2 SECOND FLOOR
A200 1/16" = 1'-0"



3 LOWER LEVEL
A200 1/16" = 1'-0"


 Plunkett Raysich Architects 11000 West Park Place Milwaukee, WI 53224 FAX 414 359-3070 TEL 414 359-3060 Email: pra@prarch.com Web: http://www.prarch.com	Meriter Hospital Child Care Facility South Mills Street Madison, WI		Date: 7.11.12	Job Number: 110358
			Drawn By: Author	Sheet Number: A200



1 NORTH ELEVATION
A400 3/32" = 1'-0"

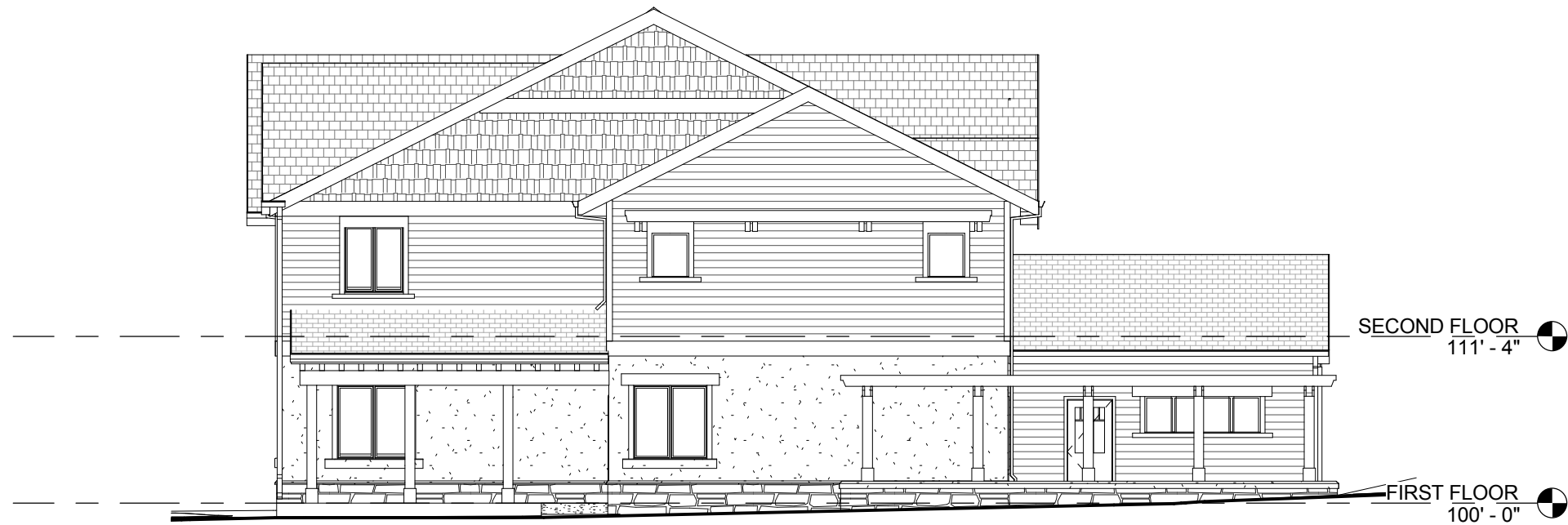


2 EAST ELEVATION
A400 3/32" = 1'-0"


 Plunkett Raysich Architects 11000 West Park Place Milwaukee, WI 53224 FAX 414 359-3070 TEL 414 359-3060 Email: pra@prarch.com Web: http://www.prarch.com	Meriter Hospital Child Care Facility South Mills Street Madison, WI		Date: 7.11.12	Job Number: 110358
			Drawn By: Author	Sheet Number: A400



1 SOUTH ELEVATION
A401 3/32" = 1'-0"



2 WEST ELEVATION
A401 3/32" = 1'-0"

 Plunkett Raysich Architects 11000 West Park Place Milwaukee, WI 53224 FAX 414 359-3070 TEL 414 359-3060 Email: pra@prarch.com Web: http://www.prarch.com	Meriter Hospital Child Care Facility South Mills Street Madison, WI		Date: 7.11.12	Job Number: 110358
			Drawn By: Author	Sheet Number: A401



©2012 Plunkett Raysich Architects, LLP - 13 July 2012 - #R110358

View from Northeast



©2012 Plunkett Raysich Architects, LLP - 13 July 2012 - #R110358

View from Northwest

MERITER®

*Plunkett
Raysich
Architects, LLP*



©2012 Plunkett Raysich Architects, LLP - 13 July 2012 - #R110358

View from Southwest


MERITER[®]

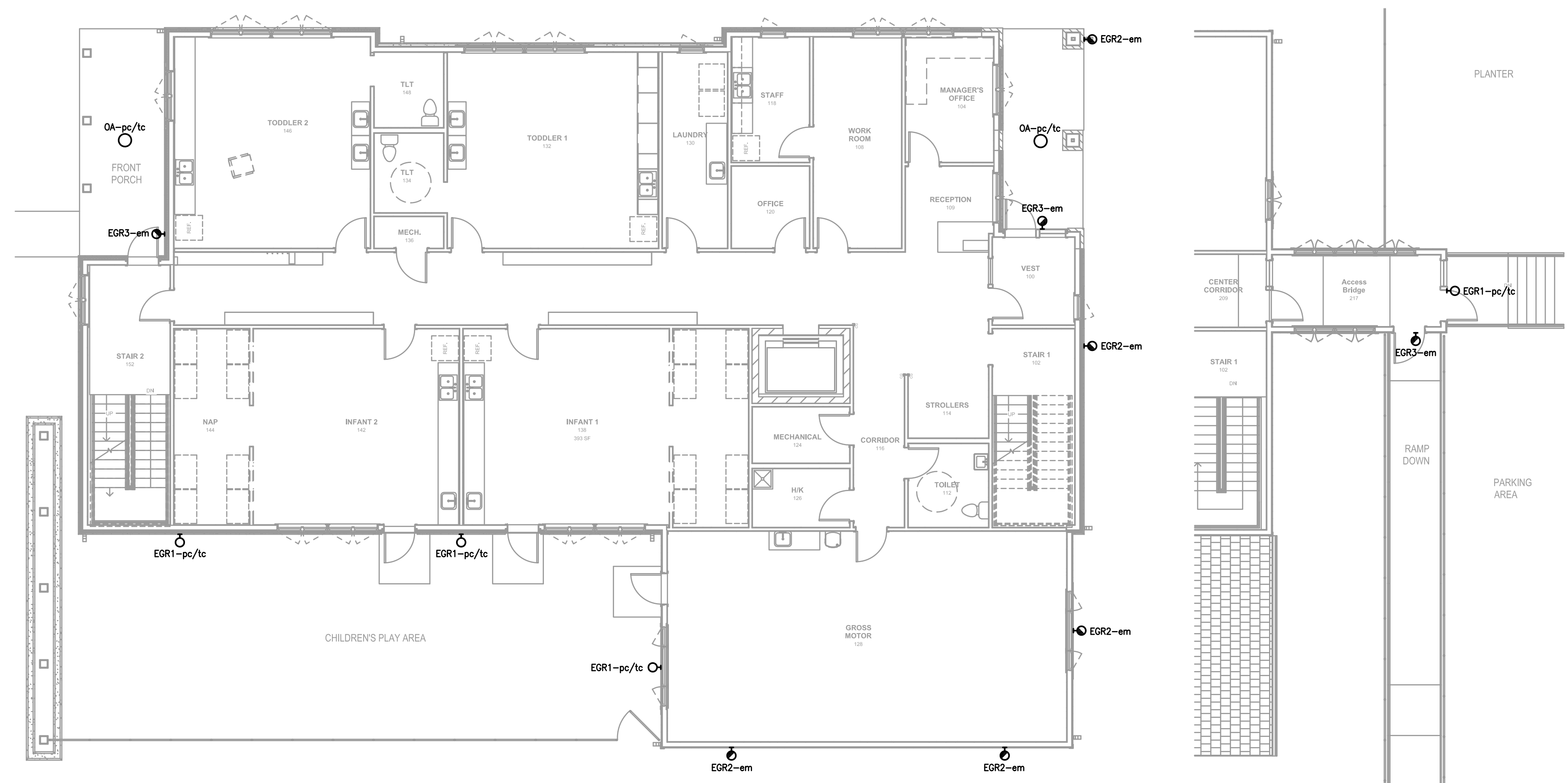
*Plunkett
Raysich
Architects, LLP*



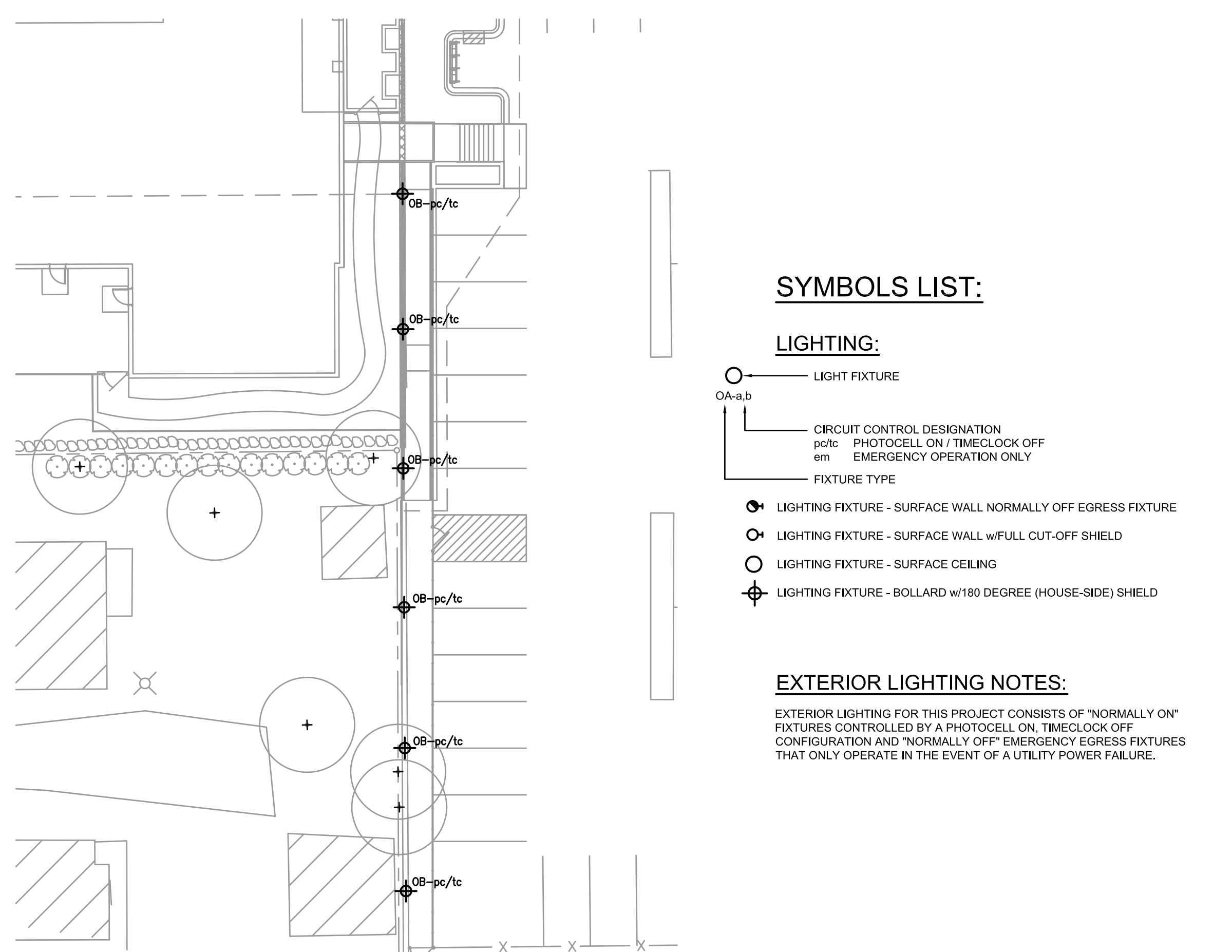
VIEW FROM MOUND STREET

VIEW FROM SOUTH MILLS STREET

 <p>Plunkett Raysich Architects <small>LLP</small></p>	<p>Plunkett Raysich Architects 11000 West Park Place Milwaukee, WI 53224 FAX 414 359-3070 TEL 414 359-3060 Email: pra@prarch.com Web: http://www.prarch.com</p>	<p>Meriter Hospital Child Care Facility South Mills Street Madison, WI</p>	Date:	Job Number:
			7.11.12	110358
			Drawn By:	Sheet Number:



FIRST FLOOR - EXTERIOR LIGHTING
1/8" = 1'-0"



PARTIAL SITE PLAN - LIGHTING
NOT TO SCALE

PARTIAL SECOND FLOOR - EXTERIOR LIGHTING
1/8" = 1'-0"

REV	DATE	REMARKS

DATE	SCALE	PROJECT NO.	DRAWING NO.	DRAWN BY:	DTM
07-18-2012	SEE PLAN	MER-11XX	E-UDC		

DATE	SCALE	PROJECT NO.	DRAWING NO.	DRAWN BY:	DTM
07-18-2012	SEE PLAN	MER-11XX	E-UDC		

DATE	SCALE	PROJECT NO.	DRAWING NO.	DRAWN BY:	DTM
07-18-2012	SEE PLAN	MER-11XX	E-UDC		

LITHONIA LIGHTING

FEATURES & SPECIFICATIONS

TYPE OA #VGR1-28TRT-120-COLOR

Rough Service Fixture

VGR1

COMPACT/RECESSED 14" Round Open Face Ceiling/Wall Mounted

ADA COMPLIANT

ORDERING INFORMATION

Series	Wattage	Color	Voltage	Finish/Color	Options	LP#
VGR1	100W	White	120V	White	None	
VGR1	100W	White	120V	Black	None	
VGR1	100W	White	120V	Dark Bronze	None	
VGR1	100W	White	120V	Platinum Silver	None	
VGR1	100W	White	120V	Black	None	
VGR1	100W	White	120V	Dark Bronze	None	
VGR1	100W	White	120V	Platinum Silver	None	
VGR1	100W	White	120V	Black	None	
VGR1	100W	White	120V	Dark Bronze	None	
VGR1	100W	White	120V	Platinum Silver	None	

LITHONIA LIGHTING

CLEAR LENS - EXTENDED FLAT TOP ROUND BOLLARD

TYPE OB #HCF405-M-A

HCF SERIES

Notes

ORDERING INFORMATION

Series	Wattage	Color	Voltage	Finish/Color	Options	LP#
OB	100W	White	120V	White	None	
OB	100W	White	120V	Black	None	
OB	100W	White	120V	Dark Bronze	None	
OB	100W	White	120V	Platinum Silver	None	
OB	100W	White	120V	Black	None	
OB	100W	White	120V	Dark Bronze	None	
OB	100W	White	120V	Platinum Silver	None	
OB	100W	White	120V	Black	None	
OB	100W	White	120V	Dark Bronze	None	
OB	100W	White	120V	Platinum Silver	None	

DUAL LITE

High Performance LED Source

FEATURES

TYPE EGR1 #PGN-COLOR-L230

Notes

ORDERING INFORMATION

Series	Wattage	Color	Voltage	Finish/Color	Options	LP#
EGR1	100W	White	120V	White	None	
EGR1	100W	White	120V	Black	None	
EGR1	100W	White	120V	Dark Bronze	None	
EGR1	100W	White	120V	Platinum Silver	None	
EGR1	100W	White	120V	Black	None	
EGR1	100W	White	120V	Dark Bronze	None	
EGR1	100W	White	120V	Platinum Silver	None	
EGR1	100W	White	120V	Black	None	
EGR1	100W	White	120V	Dark Bronze	None	
EGR1	100W	White	120V	Platinum Silver	None	

DUAL LITE

Indoor/Outdoor Emergency Lighting Unit

FEATURES

TYPE EGR2 #PG-COLOR-HTR

Notes

ORDERING INFORMATION

Series	Wattage	Color	Voltage	Finish/Color	Options	LP#
EGR2	100W	White	120V	White	None	
EGR2	100W	White	120V	Black	None	
EGR2	100W	White	120V	Dark Bronze	None	
EGR2	100W	White	120V	Platinum Silver	None	
EGR2	100W	White	120V	Black	None	
EGR2	100W	White	120V	Dark Bronze	None	
EGR2	100W	White	120V	Platinum Silver	None	
EGR2	100W	White	120V	Black	None	
EGR2	100W	White	120V	Dark Bronze	None	
EGR2	100W	White	120V	Platinum Silver	None	

LITHONIA LIGHTING

FEATURES & SPECIFICATIONS

TYPE EGR3 #ELA-AFN-COLOR-FWD

AFFINITY AFN

ORDERING INFORMATION

Series	Wattage	Color	Voltage	Finish/Color	Options	LP#
EGR3	100W	White	120V	White	None	
EGR3	100W	White	120V	Black	None	
EGR3	100W	White	120V	Dark Bronze	None	
EGR3	100W	White	120V	Platinum Silver	None	
EGR3	100W	White	120V	Black	None	
EGR3	100W	White	120V	Dark Bronze	None	
EGR3	100W	White	120V	Platinum Silver	None	
EGR3	100W	White	120V	Black	None	
EGR3	100W	White	120V	Dark Bronze	None	
EGR3	100W	White	120V	Platinum Silver	None	

FIXTURE TYPE OA

FIXTURE TYPE OB

FIXTURE TYPE EGR1

FIXTURE TYPE EGR2

FIXTURE TYPE EGR3

FIRST FLOOR - LIGHTING

E-UDC

MONUMENT

QUANTITY

1 2 3 4 Other

SURVEY

N/A Required Completed

DECORATION

S/F D/F

VOLTAGE

120v 277v Other

LIGHTING

Non-Lit
 Internal / Fluorescent

INSTALLATION

Flush mount to wall
 Between structures
 Pole mount
 On brick base

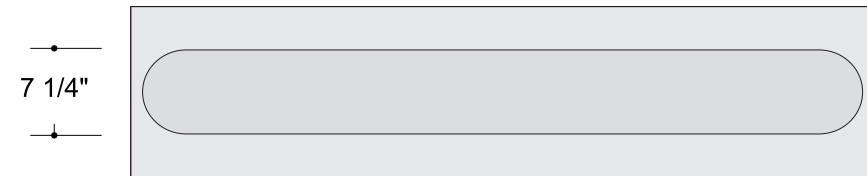
1 Akzo Nobel Brushed Aluminum

2 Paint to match 3M 3630-157 Sultan Blue vinyl

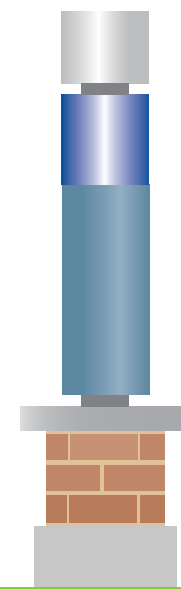
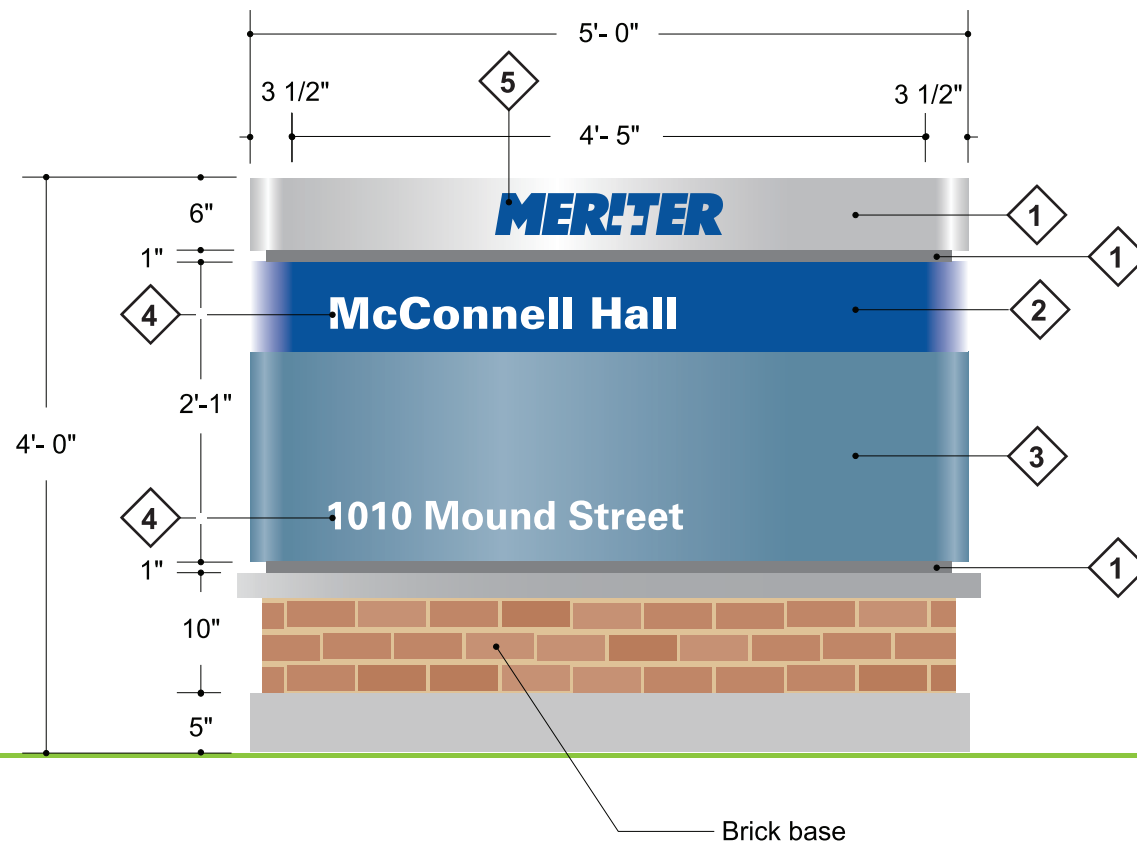
3 Paint to match PMS 5405 Blue (Satin Finish)

4 White acrylic push-thru flush

5 White acrylic push-thru flush with 3M 3630-157 Sultan Blue vinyl on 1st surface



Top View



Side View



POBLOCKI
SIGN COMPANY

414.453.4010 fax: 414.453.3070
922 S. 70th St., West Allis WI 53214

POBLOCKI.COM

PROJECT:

**Meriter
Hospital**

202 S. Park St.
Madison, WI 53715

This document represents only an approximation of material colors specified. Actual product colors may vary from this print or digital image.

CUSTOMER APPROVAL:

AUTHORIZED SIGNATURE

DATE

WORK ORDER NO.

J52508-0004

REVISION NO.

03 lbs 07/20/11 delete copy

MISSING INFORMATION

- Color (s)
- Copy
- Accurate size (s)
- Clean artwork
- Other

REPRESENTATIVE

Jim Maertz

DRAWN BY

lbs

DATE

06 / 20 / 11

SCALE

3/4" = 1'-0"

SHEET

20

DRAWING NO.

39307