



**MADISON  
PARKS**

## BPC Quarterly Report: Planning and Development

CITY OF  
**MADISON** WISCONSIN

Date: June 12, 2024  
Presented by: Ann Freiwald

# Sycamore Single Track



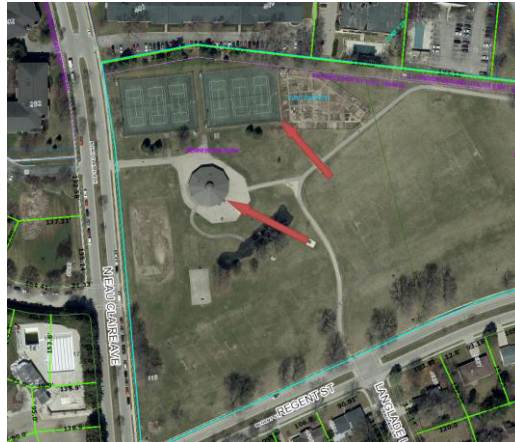
- Constructs approx 1.25 miles of singletrack around Sycamore Park
- Mix of chip seal and natural surface trail
- Provides access to singletrack for east side residents
- Contract awarded to Rock Solid Trail Contracting on 3/15/24
- Construction is now underway. Estimated completion date 8/15/24
- Total cost = \$305,000

CITY OF  
**MADISON** WISCONSIN



The third major MadBAT related project is underway at Sycamore Park on Madison's east side. The other two are the Aldo Leopold pumptrack and skills track and the Shred to School Trail. The Sycamore facility should be open later this summer or early fall. The next major project will be at Country Grove Park and will likely be installed in 2025 or 2026.

## Rennebohm Update



### Two updates on Rennebohm:

Rennebohm tennis (east) reconstruction: two rounds of bidding were held, resulting in a single bid each time. The first was not opened – the second bid was substantially over the available budget (by \$200k). Staff are working with MUSCO (lighting manufacturer) and Design Engineers (electric design consultant) to modify the lighting level & size in an effort to bring costs down on that component. Plan is to re-bid in late 2024; construction in early 2025.

Rennebohm shelter remodel – led by Engineering Facilities staff. Work to remodel the restrooms and interior storage areas to make all facilities handicapped accessible will begin after the Capital Band concert season ends (late August 2024) and is anticipated to continue through April of 2025.

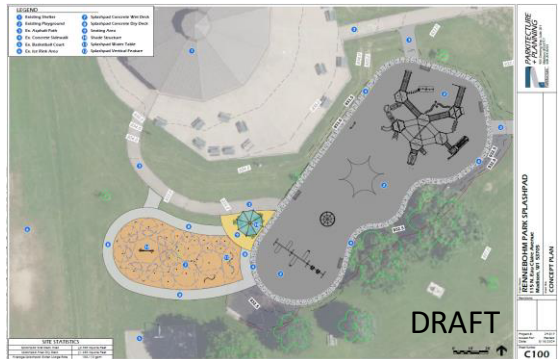
# Rennebohm Update - Sprayground

Design is underway for this donor-funded project. Parkitecture+Planning was selected as the project consultant through the RFP process.



CITY OF  
**MADISON** WISCONSIN

Graphics prepared by Parkitecture+Planning



## One more update on a Rennebohm project:

The new sprayground at Rennebohm Park is a fully donor-funded project. Staff prepared a Request for Proposals and selected Parkitecture+Planning as the project consultant. Design is now underway with input from the project donors. The project is anticipated to be complete and ready for use on June 1, 2025, barring any major setbacks.

## Door Creek Shelter - Construction Report

Construction of the new 4,000 sf four-season facility began in April. Substantial completion is anticipated in December this year.



The bids to construct the new shelter were opened 6/22/23 and the contract was awarded to C.G. Schmidt, Inc, totaling \$3.5M. The new park facility includes a reservable community room, food preparation and service area, restrooms with access from the interior and exterior, and a small service bay for Parks operations. Site improvements include new parking lot lighting and landscaping.

# Shelter Construction Report

Country Grove Shelter

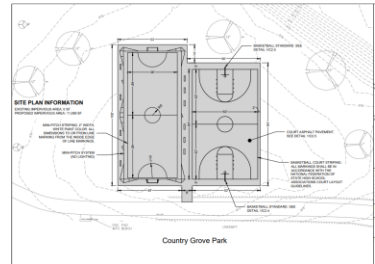
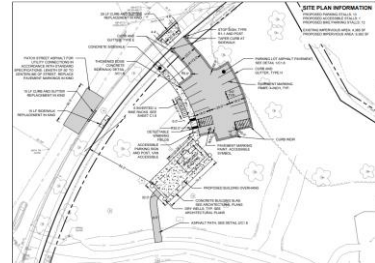


play  
MADISON  
PARKS

Country Grove Park Shelter

DESTREE  
architecture & design

CITY OF  
MADISON WISCONSIN



The Country Grove Shelter project includes a new shelter building and small parking lot. The location of the building requires the removal a basketball court and we were able to include the construction of a new basketball court and futsal court in the project. These amenities were included in the Country Grove Park Master Plan which was approved by BPC in April of 2023. The contractor began mobilizing to the site on June 3rd and construction will continue throughout the summer. Construction is anticipated to be complete by next spring.

## Tenney Park Shelter - Construction Report

Demolition of the former shelter began in early May; utility connections, building foundation and construction of the new building slab is anticipated to be completed in early June. Work is anticipated to continue through December 2024.

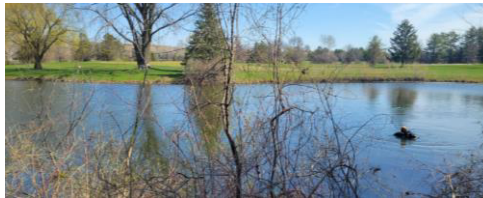


This contract was awarded to Tri-North for \$1,999,950 who submitted the lowest of three bids received at the opening on 7/13/2024. During active construction, the beach and playground will be closed but a portion of the parking lot remains open for visitors wishing to utilize the volleyball, walking path and grassy area of the park. A construction camera will go "live" soon and a link to watch the construction progress will be added to the Parks Projects website.

## Yahara Hills Golf Course Redesign



CITY OF  
**MADISON** WISCONSIN

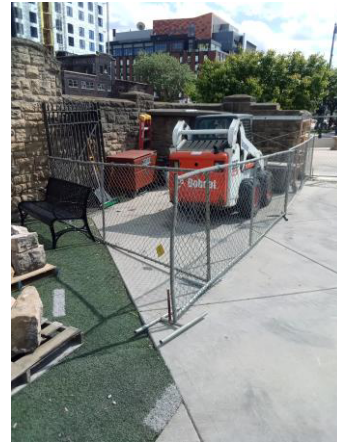


Planning staff has been assisting the Golf program with aspects of the Yahara Hills Golf Course redesign. Erosion control permits were obtained through both City Engineering and the Wisconsin DNR for the redesign work that is underway by Golf construction staff. The redesign also requires significant changes to the existing irrigation system. Staff prepared a Request for Proposals for irrigation design consultants and selected EC Design Group. Irrigation modifications will include a new pump house and new irrigation well, which is currently under review by the Wisconsin DNR. Construction of the irrigation aspects of the redesign is anticipated to occur in 2025. Planning staff also adds biweekly construction updates to the project website with information provided by Golf staff.



## Breese Stevens Field

- Historic column and gate rebuild



Parks contracted with Bachmann Construction to rebuild the historic entry columns at the Paterson Street entrance to the facility. The columns and gate supports were failing after 100 years of service. Parks is working with the City Preservation Planner to ensure the work meets the standards for landmarks restoration. The contractor photo documented and numbered the individual stones before deconstructing the columns. The columns will be rebuilt with new gate hinges to match the original condition as closely as possible. The historic gates will be refinished prior to reinstallation.