



Day View (NTS)
Approx. Size & Location



Night View (NTS)
Approx. Size & Location



Sign A

Side View

New S/F Illuminated Cabinet Qty: 1

Face: Brushed Aluminum Finish - Horizontal Grain
 Logo Copy: Push-Thru; 1" Acrylic; Opaque Vinyl on Faces V-2 & V-3
 White LEDs "H & Hotel" & Red LED's "R & RED"
 Non-Lit Address Copy: Black Vinyl
 Installed Directly to top of retaining/planting wall

■ V-2 PMS 199 Red (Opaque)
■ V-3 Black

REVIEWED
 By RErickson at 12:12 pm, Jun 09, 2011

Passout VNL No. 27-20-11

DRAWING FOR DESIGN INTENT ONLY. NOT FOR PRODUCTION.

This is an original, unpublished drawing by Jones Sign Co., Inc. It is for your personal use, in conjunction with a project being planned for you by Jones Sign Co. It is not to be shown to anyone outside of your organization nor is it to be used, reproduced, copied or exhibited in any fashion. Use of this design or the salient elements of this design in any sign done by any other company, without the express written permission of Jones Sign, is forbidden by law and carries a civil forfeiture of up to 25% of the purchase price of the sign. JONES SIGN will endeavor to closely match colors, including PMS, where specified. We cannot guarantee exact matches due to varying compatibility of surface materials and paints used. All sizes and dimensions are illustrated for client's conception of project and are not to be understood as being exact size or exact scale.

JONES SIGN
 1711 Scheuring Road De Pere, WI 54115
 Tel: 920-983-6700 Fax: 920-983-9145
 www.jonessign.com



PROJECT

HR
 HotelRED
 1501 Monroe Street
 Madison, WI

CUSTOMER APPROVAL

Authorized Signature

X _____

Date: ____/____/____

REVISIONS

- 1 sk 5.19.11 layout/specs
- 2 _____
- 3 _____
- 4 _____
- 5 _____
- 6 _____
- 7 _____

REPRESENTATIVE

Scott Bertrand

DRAWN BY

Sarah Koepsel

DATE

05.09.11

SCALE

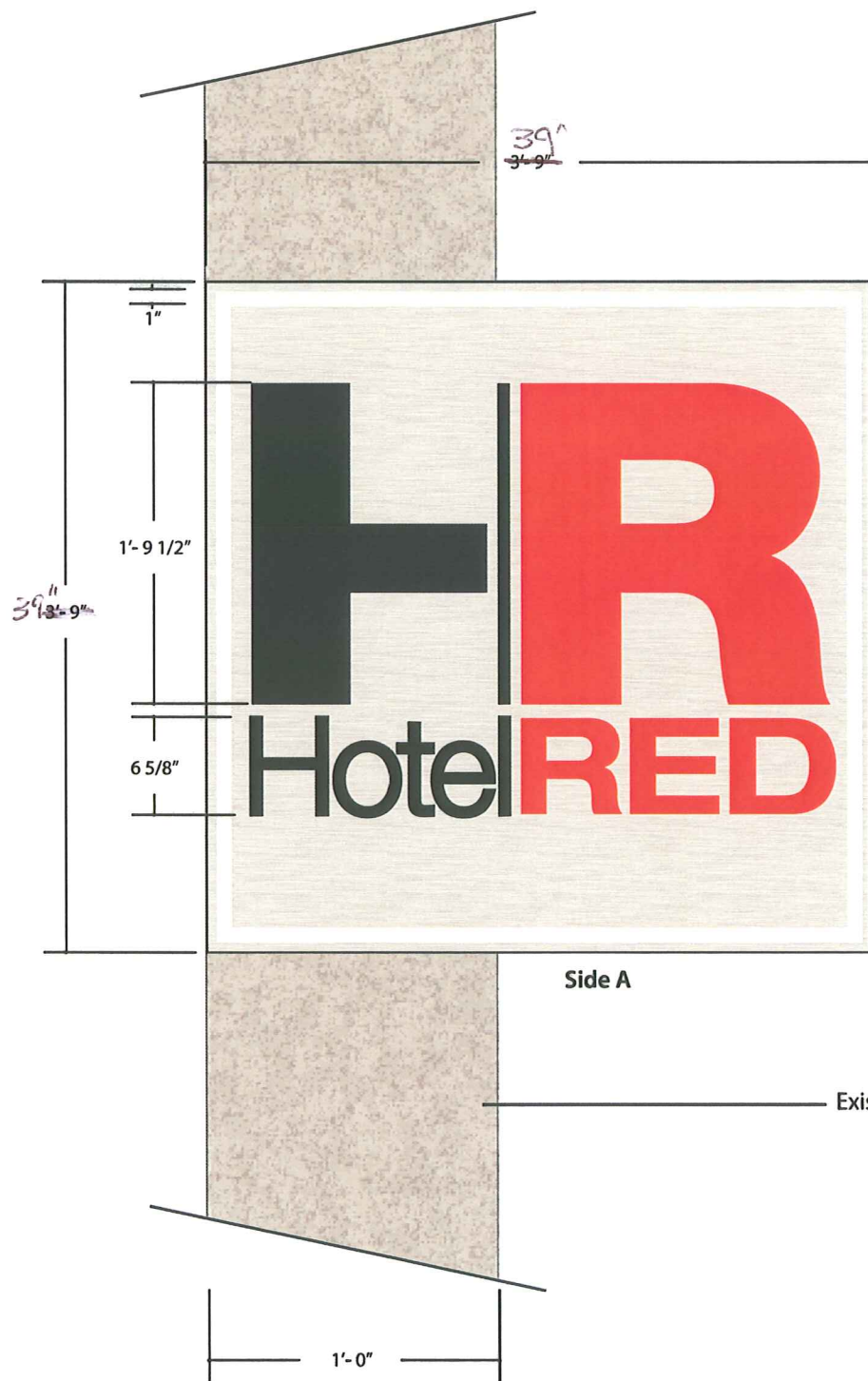
3/4" = 1'-0"

SHEET

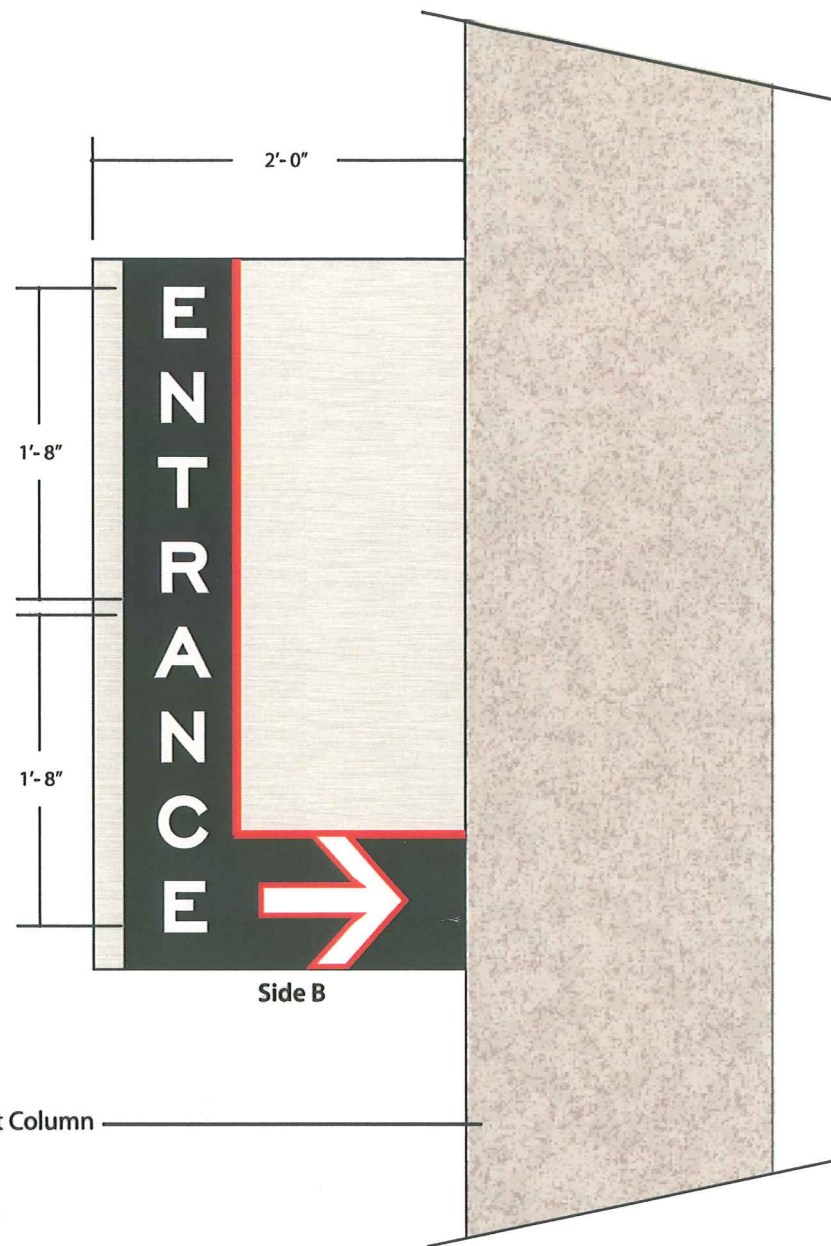
01

DRAWING #

81982_R4



Side A



Side B

Existing Cement Column

Sign B



Day View (Approx size & location)
NTS



Example of Night view
(Side A) NTS

New D/F Illuminated Cabinet

Qty: 1

Side A: White Lexan Face (Opaque Bkgd) w/Translucent Graphics 1st surface; V-2, V-3 & V-4
Leave White Lexan border around letters, Logo and 1" Border for night visibility

Side B: Non-Illuminated; Vinyl Graphics 1st Surface; V-1, V-2, & V-3

Silver Jewelite Trimcap

Sign Mounted to Existing Column; Sign off-set

- V-1 White Vinyl (Side B))
- V-2 PMS 199 Red Translucent vinyl
- V-3 Black
- V-4 Opaque Satin Aluminum Vinyl 7725-120

DRAWING FOR DESIGN INTENT ONLY. NOT FOR PRODUCTION.

JONES SIGN

1711 Scheuring Road De Pere, WI 54115
Tel: 920-983-6700 Fax: 920-983-9145
www.jonesign.com



PROJECT



1501 Monroe Street
Madison, WI

CUSTOMER APPROVAL

Authorized Signature

X _____

Date: ____/____/____

REVISIONS

1 sk 5.19.11 layout/specs

2 sk 6.01.11 layout

3 sk 6.09.11 layout/size

4

5

6

7

REPRESENTATIVE

Scott Bertrand

DRAWN BY

Sarah Koepsel

DATE

05.09.11

SCALE

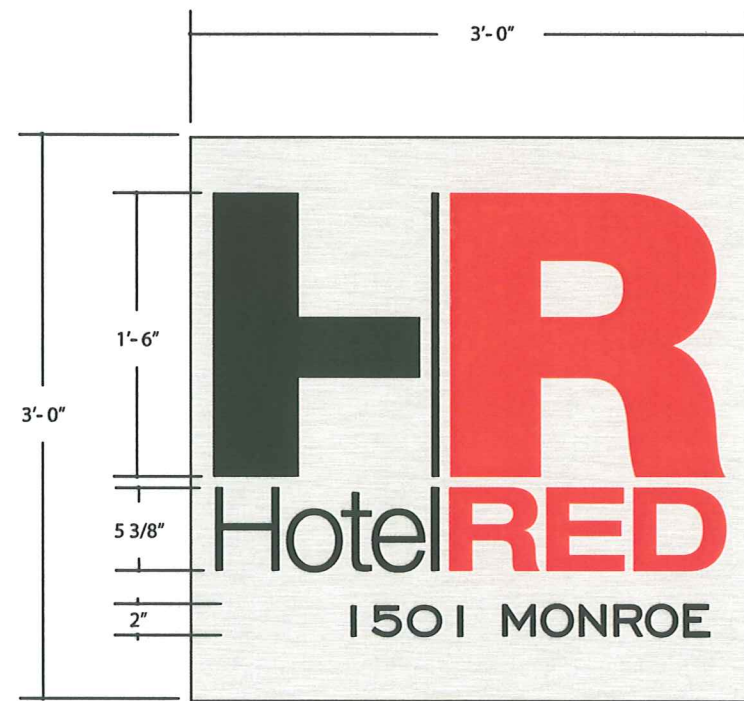
1" = 1'-0"

SHEET

02

DRAWING #

81982_R4



Sign C



Side View



New S/F Non-Illuminated Pan Sign Qty: 1

Face: Brushed Aluminum Finish - Horizontal Grain
 Opaque Vinyl Graphics 1st Surface; V-2 & V-3
 .080 Aluminum
 Stud Mount to Brick

V-2 PMS 199 Red (Opaque)
 V-3 Black

DRAWING FOR DESIGN INTENT ONLY. NOT FOR PRODUCTION.

This is an original, unpublished drawing by Jones Sign Co., Inc. It is for your personal use, in conjunction with a project being planned for you by Jones Sign Co. It is not to be shown to anyone outside of your organization nor is it to be used, reproduced, copied or exhibited in any fashion. Use of this design or the salient elements of this design in any sign done by any other company, without the express written permission of Jones Sign, is forbidden by law and carries a civil forfeiture of up to 25% of the purchase price of the sign. JONES SIGN will endeavor to closely match colors, including PMS, where specified. We cannot guarantee exact matches due to varying compatibility of surface materials and paints used. All sizes and dimensions are illustrated for client's conception of project and are not to be understood as being exact size or exact scale.

JONES SIGN

1711 Scheuring Road De Pere, WI 54115
 Tel: 920-983-6700 Fax: 920-983-9145
 www.jonessign.com



PROJECT



1501 Monroe Street
 Madison, WI

CUSTOMER APPROVAL

Authorized Signature

X _____

Date: ___/___/___

REVISIONS

1 sk 5.19.11 layout/specs

2 _____

3 _____

4 _____

5 _____

6 _____

7 _____

REPRESENTATIVE

Scott Bertrand

DRAWN BY

Sarah Koepsel

DATE

05.09.11

SCALE

1" = 1'-0"

SHEET

03

DRAWING #

81982_R4



PROJECT



1501 Monroe Street
 Madison, WI

CUSTOMER APPROVAL

Authorized Signature

X _____

Date: ___/___/___

REVISIONS

- 1 sk 5.19.11 layout/specs
- 2 sk 5.26.11 face/mounting
- 3 sk 6.08.11 plate/pole size
- 4 sk 6.09.11 plate/pole specs
- 5 _____
- 6 _____
- 7 _____

REPRESENTATIVE

Scott Bertrand

DRAWN BY

Sarah Koepsel

DATE

05.09.11

SCALE

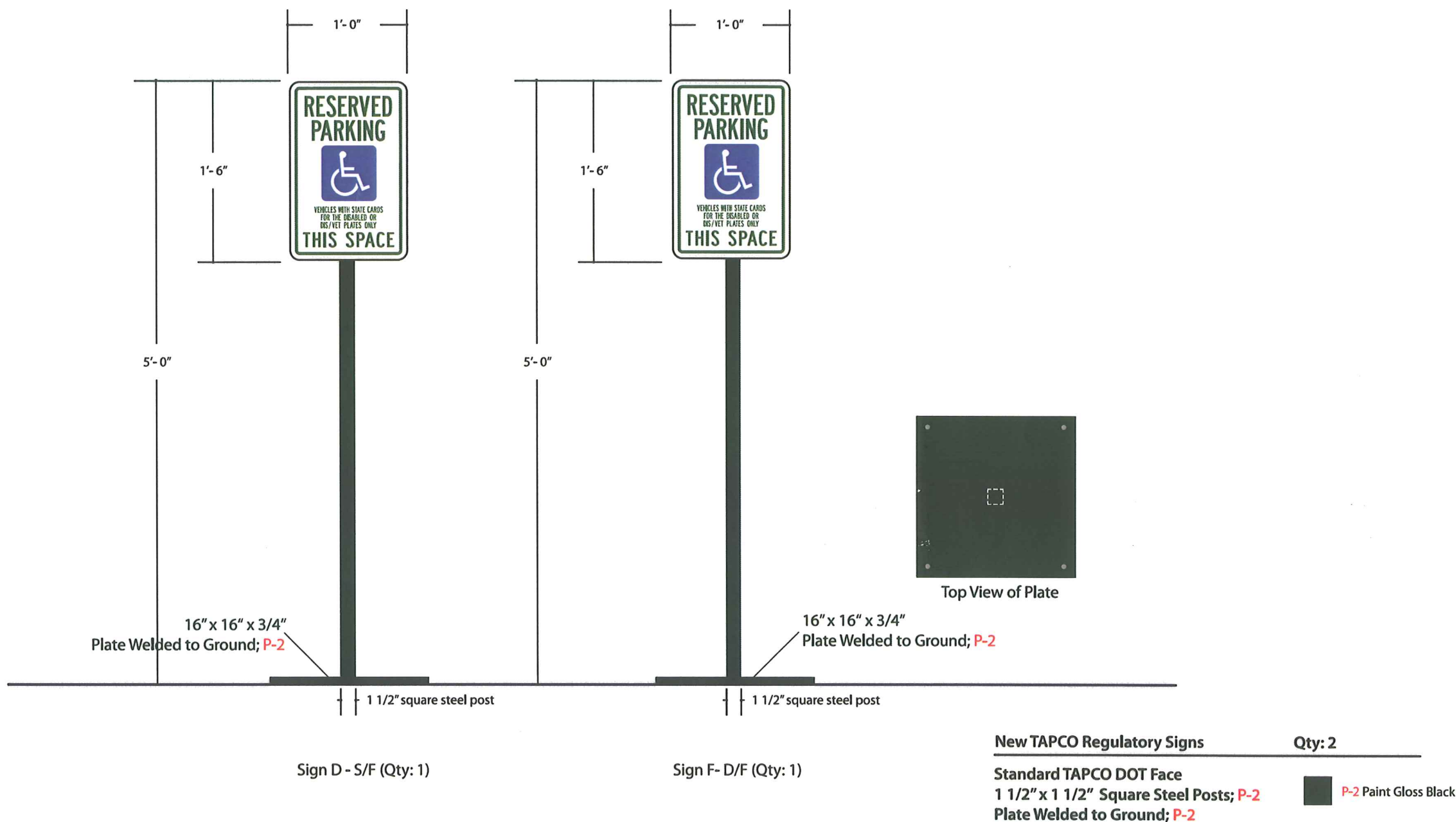
1" = 1'-0"

SHEET

04

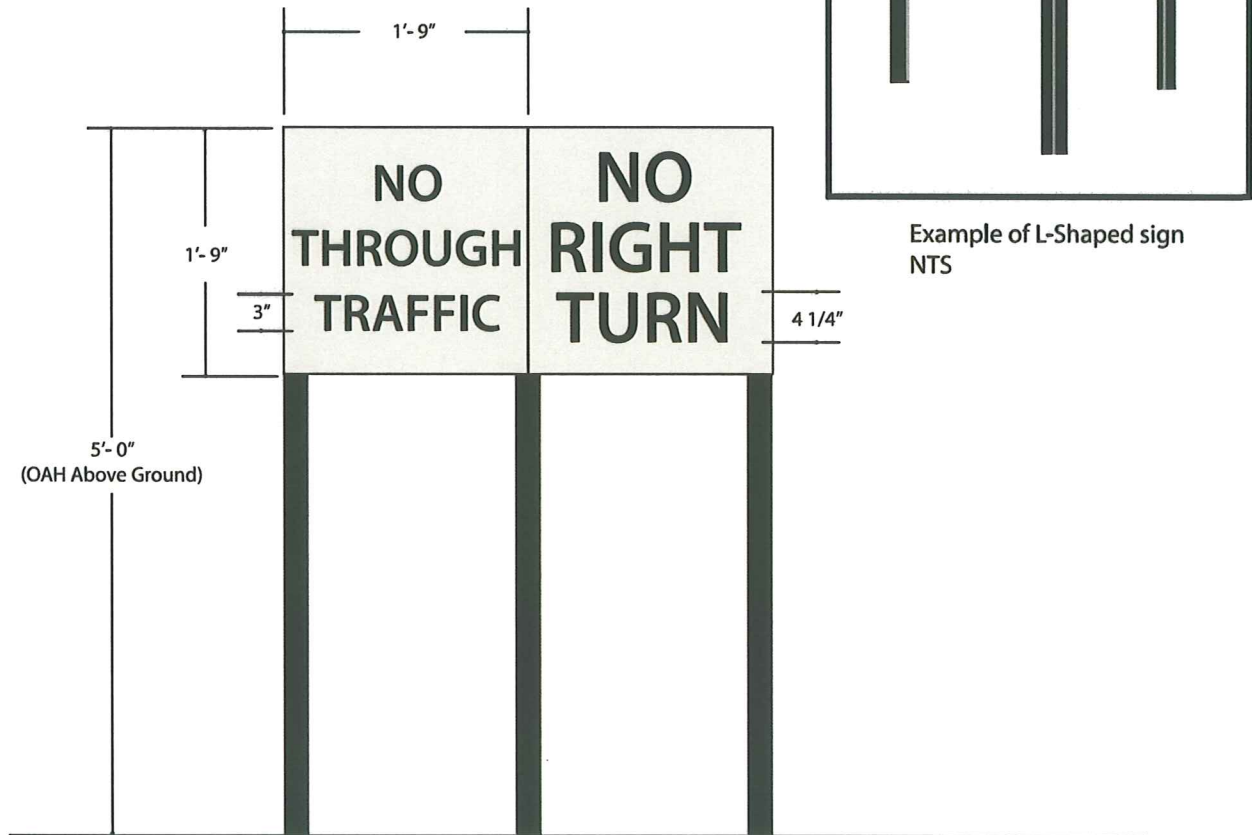
DRAWING #

81982_R4



DRAWING FOR DESIGN INTENT ONLY. NOT FOR PRODUCTION.

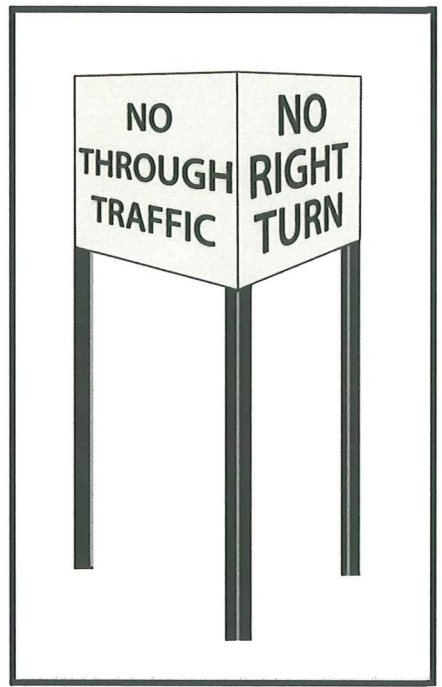
This is an original, unpublished drawing by Jones Sign Co., Inc. It is for your personal use, in conjunction with a project being planned for you by Jones Sign Co. It is not to be shown to anyone outside of your organization nor is it to be used, reproduced, copied or exhibited in any fashion. Use of this design or the salient elements of this design in any sign done by any other company, without the express written permission of Jones Sign, is forbidden by law and carries a civil forfeiture of up to 25% of the purchase price of the sign. JONES SIGN will endeavor to closely match colors, including PMS, where specified. We cannot guarantee exact matches due to varying compatibility of surface materials and paints used. All sizes and dimensions are illustrated for client's conception of project and are not to be understood as being exact size or exact scale.



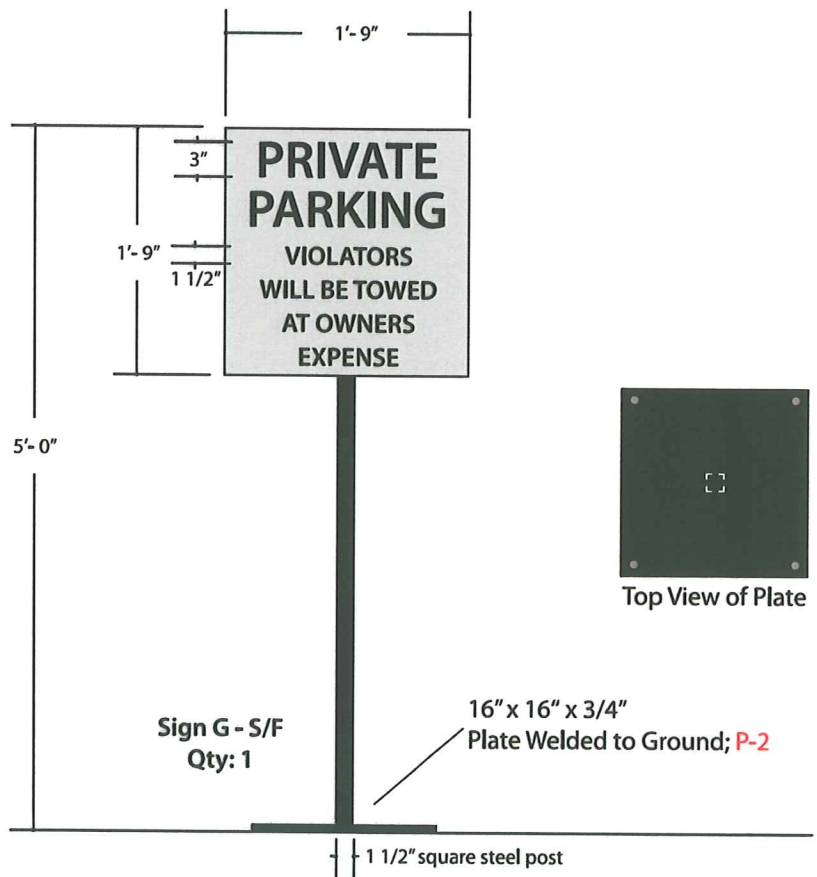
Sign F - L-Shape
Qty: 1

New Portable Regulatory Sign Qty: 1
 .080 Aluminum Faces, Paint Aluminum Face & Backside **P-1**
 Copy: **V-3**
 2" x 2" Aluminum Posts; **P-2**

- P-1** MAP Brushed Aluminum
- P-2** Paint Gloss Black
- V-3** Black



Example of L-Shaped sign
NTS



Sign G - S/F
Qty: 1

New Portable Regulatory Sign Qty: 1
 Paint Aluminum Face & Backside; **P-1**
 Copy: **V-3**
 1 1/2" x 1 1/2" Square Steel Post; **P-2**
 Plate Welded to Ground; **P-2**

- P-1** MAP Brushed Aluminum
- P-2** Paint Gloss Black
- V-3** Black



PROJECT



CUSTOMER APPROVAL

Authorized Signature
 X _____
 Date: ___/___/___

REVISIONS

- 1 sk 5.19.11 layout/specs
- 2 sk 6.09.11 plate/pole specs
- 3
- 4
- 5
- 6
- 7

REPRESENTATIVE

Scott Bertrand

DRAWN BY

Sarah Koepsel

DATE

05.09.11

SCALE

3/4" = 1'-0"

SHEET

05

DRAWING #

81982_R4

DRAWING FOR DESIGN INTENT ONLY. NOT FOR PRODUCTION.

This is an original, unpublished drawing by Jones Sign Co., Inc. It is for your personal use, in conjunction with a project being planned for you by Jones Sign Co. It is not to be shown to anyone outside of your organization nor is it to be used, reproduced, copied or exhibited in any fashion. Use of this design or the salient elements of this design in any sign done by any other company, without the express written permission of Jones Sign, is forbidden by law and carries a civil forfeiture of up to 25% of the purchase price of the sign. JONES SIGN will endeavor to closely match colors, including PMS, where specified. We cannot guarantee exact matches due to varying compatibility of surface materials and paints used. All sizes and dimensions are illustrated for client's conception of project and are not to be understood as being exact size or exact scale.